

Bill No. 107
2023

By-law No. S.-____-____

A by-law to lay out, constitute, establish and assume lands in the City of London as public highway. (as widening to Fanshawe Park Road West, west of Richmond Street; as widening to Richmond Street, south of Fanshawe Park Road West; as widening to Richmond Street, south of Fanshawe Park Road East; and as widening to Fanshawe Park Road East, east of Richmond Street)

WHEREAS section 5(3) of the *Municipal Act, 2001, S.O. 2001, c.25*, as amended, provides that a municipal power shall be exercised by by-law;

WHEREAS subsection 10(2) paragraph 7 of the *Municipal Act, 2001, S.O. 2001, c.25*, as amended, provides that a municipality may pass by-laws to provide any service or thing that the municipality considers necessary or desirable to the public;

WHEREAS subsection 31(2) of the *Municipal Act, 2001, S.O. 2001, C.25*, as amended, provides that land may only become a highway by virtue of a by-law establishing the highway and not by the activities of the municipality or any other person in relation to the land, including the spending of public money;

AND WHEREAS it is expedient to establish the lands hereinafter described as public highway;

NOW THEREFORE the Municipal Council of The Corporation of the City of London enacts as follows

1. The lands and premises hereinafter described are laid out, constituted, established and assumed as public highway as widening to Fanshawe Park Road West, west of Richmond Street, namely:

Part of Lot 33, Registrar's Compiled Plan No. 1029 in the City of London and County of Middlesex, designated as Parts 1 and 2 on Expropriation Plan ER1383826; and

Part of Lot 33, Registrar's Compiled Plan No. 1029 in the City of London and County of Middlesex, designated as Parts 1 and 2 on Expropriation Plan ER1383810

2. The lands and premises hereinafter described are laid out, constituted, established and assumed as public highway as widening to Richmond Street, south of Fanshawe Park Road West:

Part of Lot 33, Registrar's Compiled Plan No. 1029 in the City of London and County of Middlesex, designated as Parts 3 and 4 on Expropriation Plan ER1383810; and

Part of Lot 33, Registrar's Compiled Plan No. 1029 in the City of London and County of Middlesex, designated as Part 7 on Reference Plan 33R-20472; and

Part of Lots 32 and 33, Registrar's Compiled Plan No. 1029 in the City of London and County of Middlesex, designated as Part 8 on Reference Plan 33R-20472; and

Part of Lot 38, Registrar's Compiled Plan No. 1029 in the City of London and County of Middlesex, designated as Part 9 on Reference Plan 33R-20472; and

3. The lands and premises hereinafter described are laid out, constituted, established and assumed as public highway as widening to Richmond Street, south of Fanshawe Park Road East:

Part of Block 1, Registered Plan 33M-103 in the City of London and County of Middlesex, designated as Part 8 on Reference Plan 33R-20496; and

Part of Lot 16, Concession 4 (Geographic Township of London) in the City of London and County of Middlesex, designated as Part 7 on Reference Plan 33R-20496.

4. The lands and premises hereinafter described are laid out, constituted, established and assumed as public highway as widening to Fanshawe Park Road East, east of Richmond Street:

Part of Lot 16, Concession 4 (Geographic Township of London) in the City of London and County of Middlesex, designated as Part 5 on Reference Plan 33R-20496; and

Part of Block 1, Registered Plan 33M-103 in the City of London and County of Middlesex, designated as Part 4 on Reference Plan 33R-20496; and

Part of Block 2, Registered Plan 33M-103 in the City of London and County of Middlesex, designated as Parts 1, 2 and 3 on Reference Plan 33R-20496; and

Part of Lot 16, Concession 5 (Geographic Township of London) in the City of London and County of Middlesex, designated as Parts 1 and 2 on Expropriation Plan ER1383797; and

Part of Lot 16, Concession 5 (Geographic Township of London) in the City of London and County of Middlesex, designated as Parts 1 and 2 on Expropriation Plan ER1383789; and

Part of Lot 16, Concession 5 (Geographic Township of London) in the City of London and County of Middlesex, designated as Part 7 on Reference Plan 33R-19408.

5. This by-law comes into force and effect on the day it is passed.

PASSED in Open Council on April 4, 2023.

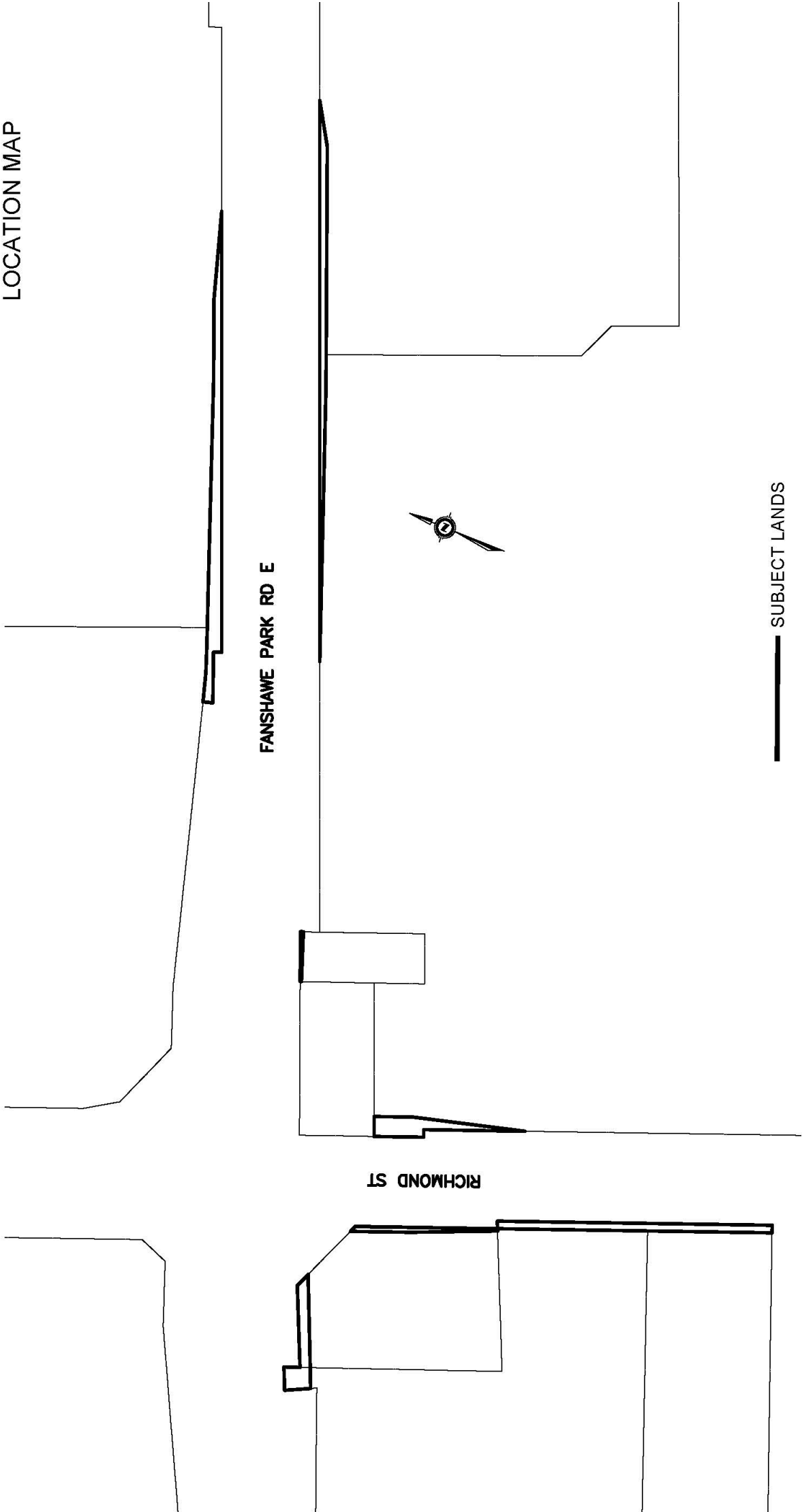
Josh Morgan
Mayor

Michael Schulthess
City Clerk

First Reading – April 4, 2023
Second Reading – April 4, 2023
Third Reading – April 4, 2023

LOCATION MAP

Location Map



— SUBJECT LANDS

RICHMOND ST

FANSHAWE PARK RD E