

Report to Corporate Services Committee

To: Chair and Members
Corporate Services Committee

From: Kelly Scherr, P. Eng., MBA, FEC, Deputy City Manager
Environment and Infrastructure

Subject: Expropriation of Lands – East London Link Project Phase 3

Date: May 23, 2023

Recommendation

That, on the recommendation of the Deputy City Manager, Environment and Infrastructure, with the concurrence of the Director, Construction and Infrastructure Services, and on the advice of the Director, Realty Services, approval **BE GIVEN** to the expropriation of land as may be required for the East London Link Project, and that the following actions **BE TAKEN** in connection therewith:

- a) application be made by The Corporation of the City of London as Expropriating Authority to the Council of The Corporation of the City of London as approving authority, for the approval to expropriate the land required for the East London Link project;
- b) The Corporation of the City of London serve and publish notice of the above application in accordance with the terms of the *Expropriations Act*;
- c) The Corporation of the City of London forward to the Ontario Land Tribunal any requests for a hearing that may be received and report such to the Council of The Corporation of the City of London for its information; and
- d) the attached Bylaw (Schedule “B”) **BE INTRODUCED** at the Council meeting on June 6th, 2023 to authorize the foregoing and direct the Civic Administration to carry out all necessary administrative actions.

Executive Summary

The purpose of this report is to seek Municipal Council approval for the expropriation of lands required by The Corporation of the City of London for the East London Link Project.

Multiple property needs have been identified to accommodate the project design and legal possession is required prior to advancing utility work and awarding the construction contract.

Many properties remain outstanding. Realty Services will continue to negotiate with the outstanding property owners in parallel with the expropriation process.

Linkage to the Corporate Strategic Plan

The following report supports the Strategic Plan through the strategic focus area of Mobility and Transportation by building new transportation infrastructure as London grows. The improvements to this corridor will enhance safety and provide convenient mobility choices for transit, automobiles, pedestrians and cyclists.

Analysis

1.0 Background Information

1.1 Previous Reports Related to this Matter

- Civic Works Committee – June 19, 2012 – London 2030 Transportation Master Plan;
- Civic Works Committee – July 21, 2014 – Rapid Transit Corridors Environmental Assessment Study Appointment of Consulting Engineer;
- Strategic Priorities and Policy Committee – July 24, 2017 – Rapid Transit Master Plan and Business Case;
- Strategic Priorities and Policy Committee – April 23, 2018 – Bus Rapid Transit Environmental Assessment Initiative;
- Civic Works Committee – March 14, 2019 – History of London’s Rapid Transit Initiative; and
- Strategic Priorities and Policy Committee – March 25, 2019 – Investing in Canada Infrastructure Program, Public Transit Stream, Transportation Projects for Submission;
- Strategic Priorities and Policy Committee – October 28, 2019 – Investing in Canada Infrastructure Program, Public Transit Infrastructure Stream, Approved Projects;
- Civic Works Committee – January 7, 2020 – Downtown Loop and Municipal Infrastructure Improvements Appointment of Consulting Engineer
- Civic Works Committee – August 11, 2020 – East London Link Transit and Municipal Infrastructure Improvements – Appointment of Consulting Engineer
- Civic Works Committee – August 11, 2020 – Wellington Gateway Transit and Municipal Infrastructure Improvements – Appointment of Consulting Engineer

2.0 Discussion and Considerations

2.1 Background

The East London Link will revitalize more than 6 km of road from Downtown to Fanshawe College. The project will add rapid transit and transportation improvements including transit links to the City’s eastern industrial employment areas. At the same time, the City will repair and replace aging sewers and watermains. The project has received Provincial approval of the Environmental Assessment (EA) which identified requirements for property acquisitions.

Due to the growing use of these roads and developments in the area, combined with operational needs to improve safety and support for all travel modes, the East London Link Project was identified as a priority to deliver a critical component of London’s rapid transit system, a central component of London’s land use and transportation policy.



Figure A1 illustrates the limits of the East London Link and its four construction phases

2.2 Anticipated Construction Timeline

In 2022, the City of London constructed Phase 1 of the East London Link on King Street between Wellington Street and Lyle Street. In March 2023 construction began on Phase 2 of the East London Link. The project limits for 2024 construction include Dundas Street from Egerton Street to Highbury Avenue, and Highbury Avenue from Dundas Street to Oxford Street. Final phase of the East London Link will be built along Oxford Street in 2025.

Negotiations with all property owners have been ongoing since Fall of 2022 and there are several properties outstanding. As legal possession of all property requirements will be needed to commence utility work and award a construction contract, the expropriation of all outstanding property is necessary.

Realty Services continues to negotiate with the outstanding property owners in parallel with the Council approval to proceed with the expropriation process to meet the project construction timelines. This report includes (31) thirty one different outstanding properties being expropriated for different property rights including fee simple, temporary and permanent easements. Of the (31) thirty one properties (7) seven are currently under agreement pending close. Agreements that have already closed in support of Phase 3 total (6) six.

This report includes properties associated with Phase 3.

Location Maps and legal descriptions of outstanding property requirements are included as Schedule A.

3.0 Financial Implications and Considerations

3.1 Compensation for Land Acquisition

Impacted property owner's compensation is protected through the expropriation legislation and Council Property Acquisition Policy. If negotiated property compensation settlements can not be achieved on an amicable basis, the compensation may be arbitrated through the Ontario Land Tribunal.

There is budget available for East London Link Project land acquisition costs relating to Phase 3 property acquisitions.

Conclusion

Construction of East London Link Phase 2 & 3 is scheduled for 2024, subject to property acquisition and other approvals. Property acquisitions need to be secured prior to commencing advance utility work and awarding the construction contract.

Commencement of the expropriation process is recommended at this time to ensure project timelines are achieved.

Realty Services will continue to negotiate with the outstanding property owners in parallel with the expropriation process.

Prepared by: Bryan Baar, Manager II, Realty Services

Submitted by: Bill Warner, AACI, Director, Realty Services

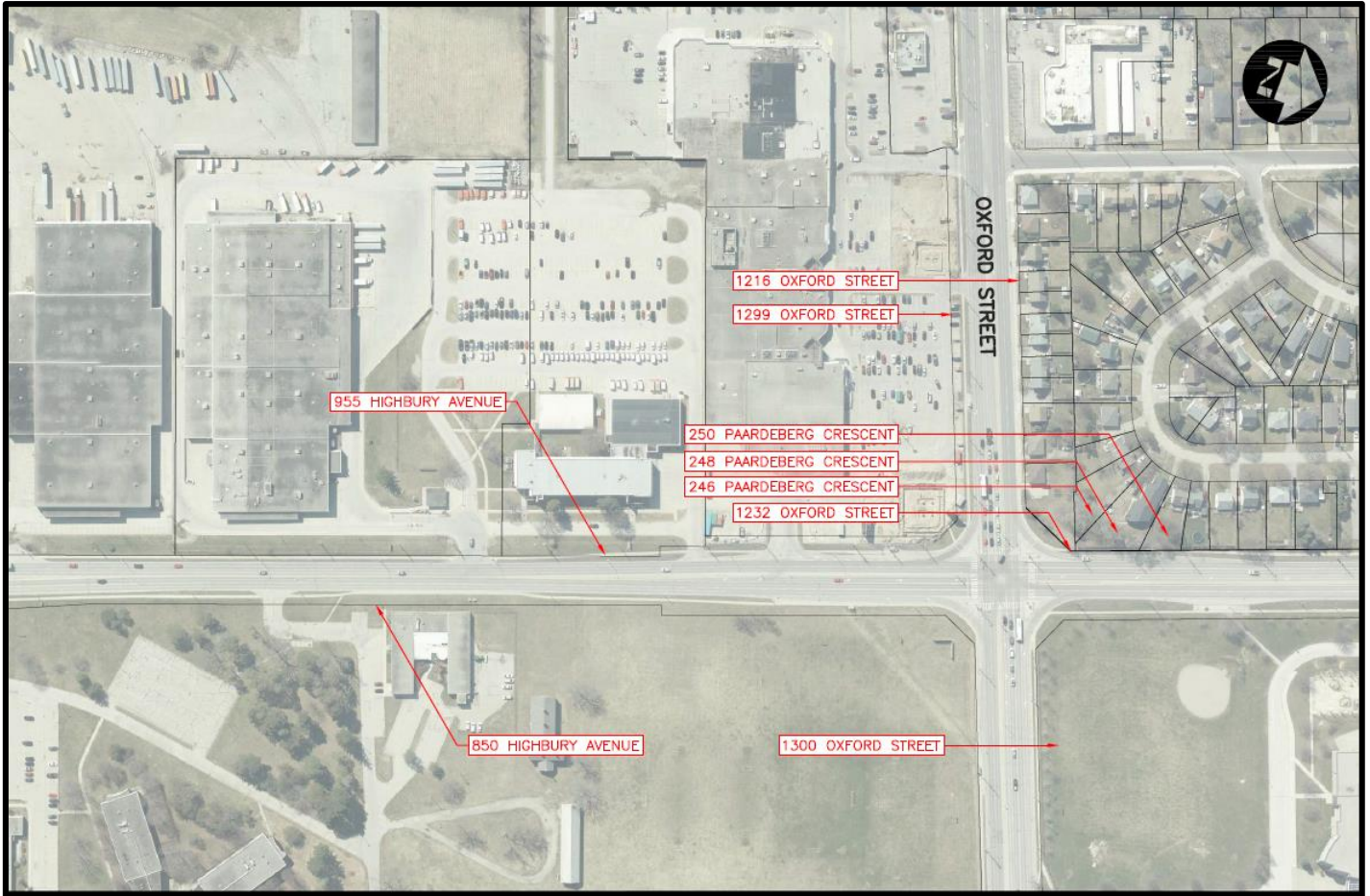
Concurred by: Jennie Dann, P. Eng., Director, Construction and Infrastructure Services

Recommended by: Kelly Scherr, P. Eng., MBA, FEC, Deputy City Manager, Environment and Infrastructure

May 15, 2023

Schedule A - Location Maps





Schedule A

Fee Simple:

1015-1019 Dundas Street

Part of Lot 17 South of Dundas Street Registered Plan 320 (3) in the City of London, County of Middlesex, designated as Part 3 Plan 33R-21423 being Part of PIN 08303-0094

1033 Dundas Street

Part of Lots 12 and 13 South of Dundas Street Registered Plan 320 (3) in the City of London, County of Middlesex, designated as Part 4 Plan 33R-21423 being Part of PIN 08303-0002

1051 Dundas Street

Part of Lots 8 and 9 South of Dundas Street Registered Plan 320 (3) in the City of London, County of Middlesex, designated as Part 8 Plan 33R-21423 being Part of PIN 08303-0007

1080 Dundas Street

Part of Lots 1, 2, 3 and 4, Registered Plan 471 (C) (Geographic Township of London) in the City of London, County of Middlesex, designated as Part 1 on Plan of Survey by AGM Surveyors dated March 22, 2023, Plan No. 8-L-6053-Z, being part of PIN 08288-0325

1097 - 1127 Dundas Street

Part of Block C, Registered Plan 115 (C) (Geographic Township of London) in the City of London, County of Middlesex, designated as Part 15 33R-21499 being part of PIN 08302-0003

1100-1108 Dundas Street

Part of Lot 18, Registered Plan 115 (C) and Part of South Half Lot 10, Concession 1 (Geographic Township of London) in the City of London, County of Middlesex, designated as Part 3 on Plan of Survey by AGM Surveyors dated March 22, 2023, Plan No. 8-L-6053-Z, being part of PIN 08289-0004

1140 Dundas Street

Part of Block D, Registered Plan 494 (C) (Geographic Township of London) in the City of London, County of Middlesex designated as Part 3 Plan 33R-21499 being part of PIN 08289-0017

1144 Dundas Street

Part of Block D, Registered Plan 494 (C) (Geographic Township of London) in the City of London, County of Middlesex designated as Part 5 Plan 33R-21499 being part of PIN 08289-0057

1152 Dundas Street

Part of Block D, Registered Plan 494 (C) (Geographic Township of London) in the City of London, County of Middlesex designated as Part 7 Plan 33R-21499 being part of PIN 08289-0013

1153 - 1155 Dundas Street

Part of Lots 9 and 10, Registered Plan 398 (C) (Geographic Township of London) in the City of London, County of Middlesex designated as Part 11 Plan 33R-21499 being part of PIN 08301-0001

1220 Dundas Street

Part of Lots 9 and 10, Registered Plan 494 (C) (Geographic Township of London) in the City of London, County of Middlesex designated as Part 2 Plan 33R-21509 being part of PIN 08290-0175

1224 Dundas Street

Part of Lot 8, Registered Plan 494 (C) (Geographic Township of London) in the City of London, County of Middlesex designated as Part 4 Plan 33R-21509 being part of PIN 08290-0176

1228 Dundas Street

Part of Lot 6, Registered Plan 494 (C) (Geographic Township of London) in the City of London, County of Middlesex designated as Part 8 Plan 33R-21509 being part of PIN 08290-0178

1230 Dundas Street

Part of Lot 5, Registered Plan 494 (C) (Geographic Township of London) in the City of London, County of Middlesex designated as Part 11 Plan 33R-21509 being part of PIN 08290-0179

1232 Dundas Street

Part of Lot 4, Registered Plan 494 (C) (Geographic Township of London) in the City of London, County of Middlesex designated as Part 12 Plan 33R-21509 being part of PIN 08290-0180

1240 Dundas Street

Part of Lot 3, Registered Plan 494 (C) (Geographic Township of London) in the City of London, County of Middlesex designated as Part 15 Plan 33R-21509 being part of PIN 08290-0181

1242 Dundas Street

Part of Lot 2, Registered Plan 494 (C) (Geographic Township of London) in the City of London, County of Middlesex designated as Part 17 Plan 33R-21509 being part of PIN 08290-0182

1260 Dundas Street

Part of Lot 9, Concession 1 (Geographic Township of London) in the City of London, County of Middlesex, designated as Part 7 on Plan of Survey by Callon Dietz Surveyors dated March 2, 2023, Plan No. E-1671, being part of PIN 08290-0233

1232 Oxford Street

Part of Lot 1, Registered Plan 369 (C) (Geographic Township of London) in the City of London, County of Middlesex designated as Parts 18, 19, 20, 21, 27, and 28 Plan 33R-21583 being part of PIN 08099-0444

1287 Dundas Street

Part of Lot 12 Registered Plan 413 (C) (Geographic Township of London) in the City of London, County of Middlesex, designated as Part 1 Plan 33R-21510 being Part of PIN 08290-0028

847 Highbury Avenue

Part of Lot 9, Concession 1 (Geographic Township of London) in the City of London, County of Middlesex designated as Parts 3, 4, 5 and 9 Plan 33R-21586 being part of PIN 08290-0220

1340 Dundas Street

Part of Lot 8, Concession 1 (Geographic Township of London) in the City of London, County of Middlesex, designated as Parts 4 and 5 on Plan of Survey by Callon Dietz Surveyors dated March 2, 2023, Plan No. E-1671, being part of PIN 08106-0137

246 Paardeberg Crescent

Part of Lot 1, Registered Plan 369 (C) (Geographic Township of London) in the City of London, County of Middlesex designated as Part 25 and 29 Plan 33R-21583 being part of PIN 08099-0468

248 Paardeberg Crescent

Part of Lot 1, Registered Plan 369 (C) (Geographic Township of London) in the City of London, County of Middlesex designated as Parts 24, 30, and 31 Plan 33R-21583 being part of PIN 08099-0467 and Part 16, 32, 33 and 34 Plan 33R-21583 being part of PIN 08099-0446

1300 Oxford Street

Part of Lot 8, Concession 2 (Geographic Township of London) in the City of London, County of Middlesex designated as Parts 6, 7, 8, 12, and 13 Plan 33R-21587 being part of PIN 08105-0052

250 Paardeberg Crescent

Part of Lot 1, Registered Plan 369 (C) (Geographic Township of London) in the City of London, County of Middlesex designated as Part 14 and 37 Plan 33R-21583 being part of PIN 08099-0325

Limited Interest (Temporary Easement):

1015-1019 Dundas Street

Part of Lots 14,15,16, and 17 South of Dundas Street Registered Plan 320 (3) in the City of London, County of Middlesex, designated as Part 2 Plan 33R-21423 being Part of PIN 08303-0094

1033 Dundas Street

Part of Lots 12 and 13 South of Dundas Street Registered Plan 320 (3) in the City of London, County of Middlesex, designated as Parts 5 and 6 Plan 33R-21423 being Part of PIN 08303-0002

1051 Dundas Street

Part of Lot 8 South of Dundas Street Registered Plan 320 (3) in the City of London, County of Middlesex, designated as Parts 10, and 11 Plan 33R-21423 being Part of PIN 08303-0007 AND Part of Lot 9 South of Dundas Street Registered Plan 320 (3) in the City of London, County of Middlesex, designated as Part 9 Plan 33R-21423 being Part of PIN 08303-0007

1080 Dundas Street

Part of Lots 1, 2, 3 and 4, Registered Plan 471 (C) (Geographic Township of London) in the City of London, County of Middlesex, designated as Part 2 on Plan of Survey by AGM Surveyors dated March 22, 2023, Plan No. 8-L-6053-Z, being part of PIN 08288-0325

1140 Dundas Street

Part of Block D, Registered Plan 494 (C) (Geographic Township of London) in the City of London, County of Middlesex designated as Part 4 Plan 33R-21499 being part of PIN 08289-0017

1144 Dundas Street

Part of Block D, Registered Plan 494 (C) (Geographic Township of London) in the City of London, County of Middlesex designated as Part 6 Plan 33R-21499 being part of PIN 08289-0057

1152 Dundas Street

Part of Block D, Registered Plan 494 (C) (Geographic Township of London) in the City of London, County of Middlesex designated as Part 8 Plan 33R-21499 being part of PIN 08289-0013

1153 - 1155 Dundas Street

Part of Lots 9 and 10, Registered Plan 398 (C) (Geographic Township of London) in the City of London, County of Middlesex designated as Parts 10 and 12 Plan 33R-21499 being part of PIN 08301-0001

1220 Dundas Street

Part of Lots 9 and 10, Registered Plan 494 (C) (Geographic Township of London) in the City of London, County of Middlesex designated as Part 1 Plan 33R-21509 being part of PIN 08290-0175

1224 Dundas Street

Part of Lot 8, Registered Plan 494 (C) (Geographic Township of London) in the City of London, County of Middlesex designated as Part 5 Plan 33R-21509 being part of PIN 08290-0176

1228 Dundas Street

Part of Lot 6, Registered Plan 494 (C) (Geographic Township of London) in the City of London, County of Middlesex designated as Part 9 Plan 33R-21509 being part of PIN 08290-0178

1230 Dundas Street

Part of Lot 5, Registered Plan 494 (C) (Geographic Township of London) in the City of London, County of Middlesex designated as Part 10 Plan 33R-21509 being part of PIN 08290-0179

1232 Dundas Street

Part of Lot 4, Registered Plan 494 (C) (Geographic Township of London) in the City of London, County of Middlesex designated as Part 13 Plan 33R-21509 being part of PIN 08290-0180

1240 Dundas Street

Part of Lot 3, Registered Plan 494 (C) (Geographic Township of London) in the City of London, County of Middlesex designated as Part 14 Plan 33R-21509 being part of PIN 08290-0181

1242 Dundas Street

Part of Lot 2, Registered Plan 494 (C) (Geographic Township of London) in the City of London, County of Middlesex designated as Part 16 Plan 33R-21509 being part of PIN 08290-0182

1232 Oxford Street

Part of Lot 1, Registered Plan 369 (C) (Geographic Township of London) in the City of London, County of Middlesex designated as Parts 6 and 7 Plan 33R-21583 being part of PIN 08099-0444

1299 Oxford Street

Part of Lot 9, Concession 1 (Geographic Township of London) in the City of London, County of Middlesex designated as Parts 1 and 2 Plan 33R-21588 being part of PIN 08290-0220

847 Highbury Avenue

Part of Lot 9, Concession 1 (Geographic Township of London) in the City of London, County of Middlesex designated as Parts 1,8,10,13, and 14 Plan 33R-21586 being part of PIN 08290-0220

1340 Dundas Street

Part of Lot 8, Concession 1 (Geographic Township of London) in the City of London, County of Middlesex, designated as Parts 3 and 6 on Plan of Survey by Callon Dietz Surveyors dated March 2, 2023, Plan No. E-1671, being part of PIN 08106-013

246 Paardeberg Crescent

Part of Lot 1, Registered Plan 369 (C) (Geographic Township of London) in the City of London, County of Middlesex designated as Part 5 Plan 33R-21583 being part of PIN 08099-0468

248 Paardeberg Crescent

Part of Lot 1, Registered Plan 369 (C) (Geographic Township of London) in the City of London, County of Middlesex designated as Parts 9, 10 and 11 Plan 33R-21583 being part of PIN 08099-0467 and Part 12, 35 and 36 Plan 33R-21583 being part of PIN 08099-0446

1300 Oxford Street

Part of Lot 8, Concession 2 (Geographic Township of London) in the City of London, County of Middlesex designated as Parts 2, 3, 9, 10, 11, 14, and 15 Plan 33R-21587 being part of PIN 08105-0052

250 Paardeberg Crescent

Part of Lot 1, Registered Plan 369 (C) (Geographic Township of London) in the City of London, County of Middlesex designated as Part 13 Plan 33R-21583 being part of PIN 08099-0325

Limited Interest (Permanent Easement):

1033 Dundas Street

Part of Lot 13 South of Dundas Street Registered Plan 320 (3) in the City of London, County of Middlesex, designated as Parts 6 and 7 Plan 33R-21423 being Part of PIN 08303-0002

1051 Dundas Street

Part of Lot 8 South of Dundas Street Registered Plan 320 (3) Geographic in the City of London, County of Middlesex, designated as Parts 11 and 12 Plan 33R-21423 being Part of PIN 08303-0007

1153 - 1155 Dundas Street

Part of Lot 9, Registered Plan 398 (C) (Geographic Township of London) in the City of London, County of Middlesex designated as Parts 9 and 10 Plan 33R-21499 being part of PIN 08301-0001

1181 Dundas Street

Part of Lot 2, Registered Plan 413 (C) (Geographic Township of London) in the City of London, County of Middlesex designated as Part 13 Plan 33R-21499 being part of PIN 08301-0003

1260 Dundas Street

Part of Lot 9, Concession 1 (Geographic Township of London) in the City of London, County of Middlesex, designated as Parts 8, 9, 10 and 11 on Plan of Survey by Callon Dietz Surveyors dated March 2, 2023, Plan No. E-1671, being part of PIN 08290-0233

1299 Oxford Street

Part of Lot 9, Concession 1 (Geographic Township of London) in the City of London, County of Middlesex designated as Parts 2, 3, and 5 Plan 33R-21588 being part of PIN 08290-0240 and designated as Parts 4 and 6 Plan 33R-21588 being part of PIN 08290-0212

432 Dorinda

Part of Lot 1, East of Dorinda St., Registered Plan 316 (3rd) in the City of London, County of Middlesex designated as Parts 1 and 2 Plan 33R-21538 being part of PIN 08288-0262

1305 Dundas Street

Part of Lots 1 and 6, Registered Plan 432 (C) (Geographic Township of London) in the City of London, County of Middlesex designated as Part 4 Plan 33R-21527 being part of PIN 08291-0205

1331 Dundas Street

Part of Lots 4, 5, 10 and 13 and part of Block C, Registered Plan 457 (C) (Geographic Township of London) in the City of London, County of Middlesex designated as Part 2 on Plan 33R-21527 being part of PIN 08292-0001

847 Highbury Avenue

Part of Lot 9, Concession 1 (Geographic Township of London) in the City of London, County of Middlesex designated as Parts 2, 6, 7, 10, 11 and 12 Plan 33R-21586 being part of PIN 08290-0220

1340 Dundas Street

Part of Lot 8, Concession 1 (Geographic Township of London) in the City of London, County of Middlesex, designated as Part 2 on Plan of Survey by Callon Dietz Surveyors dated March 2, 2023, Plan No. E-1671, being part of PIN 08106-0137

246 Paardeberg Crescent

Part of Lot 1, Registered Plan 369 (C) (Geographic Township of London) in the City of London, County of Middlesex designated as Parts 1, 2, 3, 4, 5 and 9 Plan 33R-21583 being part of PIN 08099-0468

248 Paardeberg Crescent

Part of Lot 1, Registered Plan 369 (C) (Geographic Township of London) in the City of London, County of Middlesex designated as Parts 10 Plan 33R-21583 being part of PIN 08099-0467 and Part 35 Plan 33R-21583 being part of PIN 08099-0446

1300 Oxford Street

Part of Lot 8, Concession 2 (Geographic Township of London) in the City of London, County of Middlesex designated as Parts 1, 4, 14 and 16 Plan 33R-21587 being part of PIN 08105-0052

681 Highbury Avenue

Part of Lot 7, Registered Plan 432 (C) (Geographic Township of London) in the City of London, County of Middlesex designated as Part 3 on Plan 33R-21527 being part of PIN 08290-0035

Schedule B - By-law

Bill No.
2021

By-law No. L.S.P. -

A By-law to authorize and approve an application to expropriate land in the City of London, in the County of Middlesex, for the Rapid Transit East London Link Project.

WHEREAS The Corporation of the City of London has made application to the Council of The Corporation of the City of London for approval to expropriate lands for the East London Link Project;

THEREFORE The Corporation of the City of London, as the expropriating authority, enacts as follows:

1. An application be made by The Corporation of the City of London as Expropriating Authority, to the Council of The Corporation of the City of London as approving authority, for approval to expropriate lands for the Rapid Transit East London Link Project; which land is more particularly described in attached Appendix "A" of this by-law.
2. The Corporation of the City of London as Expropriating Authority serve and publish notice of the application referred to in section 1 of this by-law in the form attached hereto as Appendix "B", being the "Notice of Application for Approval to Expropriate Lands," in accordance with the requirements of the *Expropriations Act*.
3. The Corporation of the City of London as Expropriating Authority forward to the Ontario Land Tribunal, any requests for a hearing that may be received in connection with the notice of this expropriation and report such to the Council of The Corporation of the City of London for its information.
4. The Civic Administration be hereby authorized to carry out all necessary administrative actions in respect of the said expropriation.
5. This by-law comes into force on the day it is passed.

PASSED in Open Council on

Josh Morgan, Mayor

Michael Schulthess, City Clerk

First Reading
Second Reading
Third Reading

APPENDIX "A"

To By-law L.S.P.-_____

DESCRIPTION OF LANDS TO BE EXPROPRIATED FOR THE EAST LONDON LINK PROJECT

Fee Simple:

1015-1019 Dundas Street

Part of Lot 17 South of Dundas Street Registered Plan 320 (3) in the City of London, County of Middlesex, designated as Part 3 Plan 33R-21423 being Part of PIN 08303-0094

1033 Dundas Street

Part of Lots 12 and 13 South of Dundas Street Registered Plan 320 (3) in the City of London, County of Middlesex, designated as Part 4 Plan 33R-21423 being Part of PIN 08303-0002

1051 Dundas Street

Part of Lots 8 and 9 South of Dundas Street Registered Plan 320 (3) in the City of London, County of Middlesex, designated as Part 8 Plan 33R-21423 being Part of PIN 08303-0007

1080 Dundas Street

Part of Lots 1, 2, 3 and 4, Registered Plan 471 (C) (Geographic Township of London) in the City of London, County of Middlesex, designated as Part 1 on Plan of Survey by AGM Surveyors dated March 22, 2023, Plan No. 8-L-6053-Z, being part of PIN 08288-0325

1097 - 1127 Dundas Street

Part of Block C, Registered Plan 115 (C) (Geographic Township of London) in the City of London, County of Middlesex, designated as Part 15 33R-21499 being part of PIN 08302-0003

1100-1108 Dundas Street

Part of Lot 18, Registered Plan 115 (C) and Part of South Half Lot 10, Concession 1 (Geographic Township of London) in the City of London, County of Middlesex, designated as Part 3 on Plan of Survey by AGM Surveyors dated March 22, 2023, Plan No. 8-L-6053-Z, being part of PIN 08289-0004

1140 Dundas Street

Part of Block D, Registered Plan 494 (C) (Geographic Township of London) in the City of London, County of Middlesex designated as Part 3 Plan 33R-21499 being part of PIN 08289-0017

1144 Dundas Street

Part of Block D, Registered Plan 494 (C) (Geographic Township of London) in the City of London, County of Middlesex designated as Part 5 Plan 33R-21499 being part of PIN 08289-0057

1152 Dundas Street

Part of Block D, Registered Plan 494 (C) (Geographic Township of London) in the City of London, County of Middlesex designated as Part 7 Plan 33R-21499 being part of PIN 08289-0013

1153 - 1155 Dundas Street

Part of Lots 9 and 10, Registered Plan 398 (C) (Geographic Township of London) in the City of London, County of Middlesex designated as Part 11 Plan 33R-21499 being part of PIN 08301-0001

1220 Dundas Street

Part of Lots 9 and 10, Registered Plan 494 (C) (Geographic Township of London) in the City of London, County of Middlesex designated as Part 2 Plan 33R-21509 being part of PIN 08290-0175

1224 Dundas Street

Part of Lot 8, Registered Plan 494 (C) (Geographic Township of London) in the City of London, County of Middlesex designated as Part 4 Plan 33R-21509 being part of PIN 08290-0176

1228 Dundas Street

Part of Lot 6, Registered Plan 494 (C) (Geographic Township of London) in the City of London, County of Middlesex designated as Part 8 Plan 33R-21509 being part of PIN 08290-0178

1230 Dundas Street

Part of Lot 5, Registered Plan 494 (C) (Geographic Township of London) in the City of London, County of Middlesex designated as Part 11 Plan 33R-21509 being part of PIN 08290-0179

1232 Dundas Street

Part of Lot 4, Registered Plan 494 (C) (Geographic Township of London) in the City of London, County of Middlesex designated as Part 12 Plan 33R-21509 being part of PIN 08290-0180

1240 Dundas Street

Part of Lot 3, Registered Plan 494 (C) (Geographic Township of London) in the City of London, County of Middlesex designated as Part 15 Plan 33R-21509 being part of PIN 08290-0181

1242 Dundas Street

Part of Lot 2, Registered Plan 494 (C) (Geographic Township of London) in the City of London, County of Middlesex designated as Part 17 Plan 33R-21509 being part of PIN 08290-0182

1260 Dundas Street

Part of Lot 9, Concession 1 (Geographic Township of London) in the City of London, County of Middlesex, designated as Part 7 on Plan of Survey by Callon Dietz Surveyors dated March 2, 2023, Plan No. E-1671, being part of PIN 08290-0233

1232 Oxford Street

Part of Lot 1, Registered Plan 369 (C) (Geographic Township of London) in the City of London, County of Middlesex designated as Parts 18, 19, 20, 21, 27, and 28 Plan 33R-21583 being part of PIN 08099-0444

1287 Dundas Street

Part of Lot 12 Registered Plan 413 (C) (Geographic Township of London) in the City of London, County of Middlesex, designated as Part 1 Plan 33R-21510 being Part of PIN 08290-0028

847 Highbury Avenue

Part of Lot 9, Concession 1 (Geographic Township of London) in the City of London, County of Middlesex designated as Parts 3, 4, 5 and 9 Plan 33R-21586 being part of PIN 08290-0220

1340 Dundas Street

Part of Lot 8, Concession 1 (Geographic Township of London) in the City of London, County of Middlesex, designated as Parts 4 and 5 on Plan of Survey by Callon Dietz Surveyors dated March 2, 2023, Plan No. E-1671, being part of PIN 08106-0137

246 Paardeberg Crescent

Part of Lot 1, Registered Plan 369 (C) (Geographic Township of London) in the City of London, County of Middlesex designated as Part 25 and 29 Plan 33R-21583 being part of PIN 08099-0468

248 Paardeberg Crescent

Part of Lot 1, Registered Plan 369 (C) (Geographic Township of London) in the City of London, County of Middlesex designated as Parts 24, 30, and 31 Plan 33R-21583 being part of PIN 08099-0467 and Part 16, 32, 33 and 34 Plan 33R-21583 being part of PIN 08099-0446

1300 Oxford Street

Part of Lot 8, Concession 2 (Geographic Township of London) in the City of London, County of Middlesex designated as Parts 6, 7, 8, 12, and 13 Plan 33R-21587 being part of PIN 08105-0052

250 Paardeberg Crescent

Part of Lot 1, Registered Plan 369 (C) (Geographic Township of London) in the City of London, County of Middlesex designated as Part 14 and 37 Plan 33R-21583 being part of PIN 08099-0325

Limited Interest (Temporary Easement):

1015-1019 Dundas Street

Part of Lots 14, 15, 16, and 17 South of Dundas Street Registered Plan 320 (3) in the City of London, County of Middlesex, designated as Part 2 Plan 33R-21423 being Part of PIN 08303-0094

1033 Dundas Street

Part of Lots 12 and 13 South of Dundas Street Registered Plan 320 (3) in the City of London, County of Middlesex, designated as Parts 5 and 6 Plan 33R-21423 being Part of PIN 08303-0002

1051 Dundas Street

Part of Lot 8 South of Dundas Street Registered Plan 320 (3) in the City of London, County of Middlesex, designated as Parts 10, and 11 Plan 33R-21423 being Part of PIN 08303-0007 AND Part of Lot 9 South of Dundas Street Registered Plan 320 (3) in the City of London, County of Middlesex, designated as Part 9 Plan 33R-21423 being Part of PIN 08303-0007

1080 Dundas Street

Part of Lots 1, 2, 3 and 4, Registered Plan 471 (C) (Geographic Township of London) in the City of London, County of Middlesex, designated as Part 2 on Plan of Survey by AGM Surveyors dated March 22, 2023, Plan No. 8-L-6053-Z, being part of PIN 08288-0325

1140 Dundas Street

Part of Block D, Registered Plan 494 (C) (Geographic Township of London) in the City of London, County of Middlesex designated as Part 4 Plan 33R-21499 being part of PIN 08289-0017

1144 Dundas Street

Part of Block D, Registered Plan 494 (C) (Geographic Township of London) in the City of London, County of Middlesex designated as Part 6 Plan 33R-21499 being part of PIN 08289-0057

1152 Dundas Street

Part of Block D, Registered Plan 494 (C) (Geographic Township of London) in the City of London, County of Middlesex designated as Part 8 Plan 33R-21499 being part of PIN 08289-0013

1153 - 1155 Dundas Street

Part of Lots 9 and 10, Registered Plan 398 (C) (Geographic Township of London) in the City of London, County of Middlesex designated as Parts 10 and 12 Plan 33R-21499 being part of PIN 08301-0001

1220 Dundas Street

Part of Lots 9 and 10, Registered Plan 494 (C) (Geographic Township of London) in the City of London, County of Middlesex designated as Part 1 Plan 33R-21509 being part of PIN 08290-0175

1224 Dundas Street

Part of Lot 8, Registered Plan 494 (C) (Geographic Township of London) in the City of London, County of Middlesex designated as Part 5 Plan 33R-21509 being part of PIN 08290-0176

1228 Dundas Street

Part of Lot 6, Registered Plan 494 (C) (Geographic Township of London) in the City of London, County of Middlesex designated as Part 9 Plan 33R-21509 being part of PIN 08290-0178

1230 Dundas Street

Part of Lot 5, Registered Plan 494 (C) (Geographic Township of London) in the City of London, County of Middlesex designated as Part 10 Plan 33R-21509 being part of PIN 08290-0179

1232 Dundas Street

Part of Lot 4, Registered Plan 494 (C) (Geographic Township of London) in the City of London, County of Middlesex designated as Part 13 Plan 33R-21509 being part of PIN 08290-0180

1240 Dundas Street

Part of Lot 3, Registered Plan 494 (C) (Geographic Township of London) in the City of London, County of Middlesex designated as Part 14 Plan 33R-21509 being part of PIN 08290-0181

1242 Dundas Street

Part of Lot 2, Registered Plan 494 (C) (Geographic Township of London) in the City of London, County of Middlesex designated as Part 16 Plan 33R-21509 being part of PIN 08290-0182

1232 Oxford Street

Part of Lot 1, Registered Plan 369 (C) (Geographic Township of London) in the City of London, County of Middlesex designated as Parts 6 and 7 Plan 33R-21583 being part of PIN 08099-0444

1299 Oxford Street

Part of Lot 9, Concession 1 (Geographic Township of London) in the City of London, County of Middlesex designated as Parts 1 and 2 Plan 33R-21588 being part of PIN 08290-0220

847 Highbury Avenue

Part of Lot 9, Concession 1 (Geographic Township of London) in the City of London, County of Middlesex designated as Parts 1,8,10,13, and 14 Plan 33R-21586 being part of PIN 08290-0220

1340 Dundas Street

Part of Lot 8, Concession 1 (Geographic Township of London) in the City of London, County of Middlesex, designated as Parts 3 and 6 on Plan of Survey by Callon Dietz Surveyors dated March 2, 2023, Plan No. E-1671, being part of PIN 08106-013

246 Paardeberg Crescent

Part of Lot 1, Registered Plan 369 (C) (Geographic Township of London) in the City of London, County of Middlesex designated as Part 5 Plan 33R-21583 being part of PIN 08099-0468

248 Paardeberg Crescent

Part of Lot 1, Registered Plan 369 (C) (Geographic Township of London) in the City of London, County of Middlesex designated as Parts 9, 10 and 11 Plan 33R-21583 being part of PIN 08099-0467 and Part 12, 35 and 36 Plan 33R-21583 being part of PIN 08099-0446

1300 Oxford Street

Part of Lot 8, Concession 2 (Geographic Township of London) in the City of London, County of Middlesex designated as Parts 2, 3, 9, 10, 11, 14, and 15 Plan 33R-21587 being part of PIN 08105-0052

250 Paardeberg Crescent

Part of Lot 1, Registered Plan 369 (C) (Geographic Township of London) in the City of London, County of Middlesex designated as Part 13 Plan 33R-21583 being part of PIN 08099-0325

Limited Interest (Permanent Easement):

1033 Dundas Street

Part of Lot 13 South of Dundas Street Registered Plan 320 (3) in the City of London, County of Middlesex, designated as Parts 6 and 7 Plan 33R-21423 being Part of PIN 08303-0002

1051 Dundas Street

Part of Lot 8 South of Dundas Street Registered Plan 320 (3) Geographic in the City of London, County of Middlesex, designated as Parts 11 and 12 Plan 33R-21423 being Part of PIN 08303-0007

1153 - 1155 Dundas Street

Part of Lot 9, Registered Plan 398 (C) (Geographic Township of London) in the City of London, County of Middlesex designated as Parts 9 and 10 Plan 33R-21499 being part of PIN 08301-0001

1181 Dundas Street

Part of Lot 2, Registered Plan 413 (C) (Geographic Township of London) in the City of London, County of Middlesex designated as Part 13 Plan 33R-21499 being part of PIN 08301-0003

1260 Dundas Street

Part of Lot 9, Concession 1 (Geographic Township of London) in the City of London, County of Middlesex, designated as Parts 8, 9, 10 and 11 on Plan of Survey by Callon Dietz Surveyors dated March 2, 2023, Plan No. E-1671, being part of PIN 08290-0233

1299 Oxford Street

Part of Lot 9, Concession 1 (Geographic Township of London) in the City of London, County of Middlesex designated as Parts 2, 3, and 5 Plan 33R-21588 being part of PIN 08290-0240 and designated as Parts 4 and 6 Plan 33R-21588 being part of PIN 08290-0212

432 Dorinda

Part of Lot 1, East of Dorinda St., Registered Plan 316 (3rd) in the City of London, County of Middlesex designated as Parts 1 and 2 Plan 33R-21538 being part of PIN 08288-0262

1305 Dundas Street

Part of Lots 1 and 6, Registered Plan 432 (C) (Geographic Township of London) in the City of London, County of Middlesex designated as Part 4 Plan 33R-21527 being part of PIN 08291-0205

1331 Dundas Street

Part of Lots 4, 5, 10 and 13 and part of Block C, Registered Plan 457 (C) (Geographic Township of London) in the City of London, County of Middlesex designated as Part 2 on Plan 33R-21527 being part of PIN 08292-0001

847 Highbury Avenue

Part of Lot 9, Concession 1 (Geographic Township of London) in the City of London, County of Middlesex designated as Parts 2, 6, 7, 10, 11 and 12 Plan 33R-21586 being part of PIN 08290-0220

1340 Dundas Street

Part of Lot 8, Concession 1 (Geographic Township of London) in the City of London, County of Middlesex, designated as Part 2 on Plan of Survey by Callon Dietz Surveyors dated March 2, 2023, Plan No. E-1671, being part of PIN 08106-0137

246 Paardeberg Crescent

Part of Lot 1, Registered Plan 369 (C) (Geographic Township of London) in the City of London, County of Middlesex designated as Parts 1, 2, 3, 4, 5 and 9 Plan 33R-21583 being part of PIN 08099-0468

248 Paardeberg Crescent

Part of Lot 1, Registered Plan 369 (C) (Geographic Township of London) in the City of London, County of Middlesex designated as Parts 10 Plan 33R-21583 being part of PIN 08099-0467 and Part 35 Plan 33R-21583 being part of PIN 08099-0446

1300 Oxford Street

Part of Lot 8, Concession 2 (Geographic Township of London) in the City of London, County of Middlesex designated as Parts 1, 4, 14 and 16 Plan 33R-21587 being part of PIN 08105-0052

681 Highbury Avenue

Part of Lot 7, Registered Plan 432 (C) (Geographic Township of London) in the City of London, County of Middlesex designated as Part 3 on Plan 33R-21527 being part of PIN 08290-0035

APPENDIX "B"

To By-law L.S.P.- _____

EXPROPRIATIONS ACT, R.S.O. 1990, CHAPTER E.26

NOTICE OF APPLICATION FOR APPROVAL TO EXPROPRIATE LAND

Expropriations Act

IN THE MATTER OF an application by The Corporation of the City of London for approval to expropriate lands being all of the lands listed below for the purpose of the Rapid Transit East London Link Project.

NOTICE IS HEREBY GIVEN that application has been made for approval to expropriate the following lands described as follows:

Fee Simple:

1015-1019 Dundas Street

Part of Lot 17 South of Dundas Street Registered Plan 320 (3) in the City of London, County of Middlesex, designated as Part 3 Plan 33R-21423 being Part of PIN 08303-0094

1033 Dundas Street

Part of Lots 12 and 13 South of Dundas Street Registered Plan 320 (3) in the City of London, County of Middlesex, designated as Part 4 Plan 33R-21423 being Part of PIN 08303-0002

1051 Dundas Street

Part of Lots 8 and 9 South of Dundas Street Registered Plan 320 (3) in the City of London, County of Middlesex, designated as Part 8 Plan 33R-21423 being Part of PIN 08303-0007

1080 Dundas Street

Part of Lots 1, 2, 3 and 4, Registered Plan 471 (C) (Geographic Township of London) in the City of London, County of Middlesex, designated as Part 1 on Plan of Survey by AGM Surveyors dated March 22, 2023, Plan No. 8-L-6053-Z, being part of PIN 08288-0325

1097 - 1127 Dundas Street

Part of Block C, Registered Plan 115 (C) (Geographic Township of London) in the City of London, County of Middlesex, designated as Part 15 33R-21499 being part of PIN 08302-0003

1100-1108 Dundas Street

Part of Lot 18, Registered Plan 115 (C) and Part of South Half Lot 10, Concession 1 (Geographic Township of London) in the City of London, County of Middlesex, designated as Part 3 on Plan of Survey by AGM Surveyors dated March 22, 2023, Plan No. 8-L-6053-Z, being part of PIN 08289-0004

1140 Dundas Street

Part of Block D, Registered Plan 494 (C) (Geographic Township of London) in the City of London, County of Middlesex designated as Part 3 Plan 33R-21499 being part of PIN 08289-0017

1144 Dundas Street

Part of Block D, Registered Plan 494 (C) (Geographic Township of London) in the City of London, County of Middlesex designated as Part 5 Plan 33R-21499 being part of PIN 08289-0057

1152 Dundas Street

Part of Block D, Registered Plan 494 (C) (Geographic Township of London) in the City of London, County of Middlesex designated as Part 7 Plan 33R-21499 being part of PIN 08289-0013

1153 - 1155 Dundas Street

Part of Lots 9 and 10, Registered Plan 398 (C) (Geographic Township of London) in the City of London, County of Middlesex designated as Part 11 Plan 33R-21499 being part of PIN 08301-0001

1220 Dundas Street

Part of Lots 9 and 10, Registered Plan 494 (C) (Geographic Township of London) in the City of London, County of Middlesex designated as Part 2 Plan 33R-21509 being part of PIN 08290-0175

1224 Dundas Street

Part of Lot 8, Registered Plan 494 (C) (Geographic Township of London) in the City of London, County of Middlesex designated as Part 4 Plan 33R-21509 being part of PIN 08290-0176

1228 Dundas Street

Part of Lot 6, Registered Plan 494 (C) (Geographic Township of London) in the City of London, County of Middlesex designated as Part 8 Plan 33R-21509 being part of PIN 08290-0178

1230 Dundas Street

Part of Lot 5, Registered Plan 494 (C) (Geographic Township of London) in the City of London, County of Middlesex designated as Part 11 Plan 33R-21509 being part of PIN 08290-0179

1232 Dundas Street

Part of Lot 4, Registered Plan 494 (C) (Geographic Township of London) in the City of London, County of Middlesex designated as Part 12 Plan 33R-21509 being part of PIN 08290-0180

1240 Dundas Street

Part of Lot 3, Registered Plan 494 (C) (Geographic Township of London) in the City of London, County of Middlesex designated as Part 15 Plan 33R-21509 being part of PIN 08290-0181

1242 Dundas Street

Part of Lot 2, Registered Plan 494 (C) (Geographic Township of London) in the City of London, County of Middlesex designated as Part 17 Plan 33R-21509 being part of PIN 08290-0182

1260 Dundas Street

Part of Lot 9, Concession 1 (Geographic Township of London) in the City of London, County of Middlesex, designated as Part 7 on Plan of Survey by Callon Dietz Surveyors dated March 2, 2023, Plan No. E-1671, being part of PIN 08290-0233

1232 Oxford Street

Part of Lot 1, Registered Plan 369 (C) (Geographic Township of London) in the City of London, County of Middlesex designated as Parts 18, 19, 20, 21, 27, and 28 Plan 33R-21583 being part of PIN 08099-0444

1287 Dundas Street

Part of Lot 12 Registered Plan 413 (C) (Geographic Township of London) in the City of London, County of Middlesex, designated as Part 1 Plan 33R-21510 being Part of PIN 08290-0028

847 Highbury Avenue

Part of Lot 9, Concession 1 (Geographic Township of London) in the City of London, County of Middlesex designated as Parts 3, 4, 5 and 9 Plan 33R-21586 being part of PIN 08290-0220

1340 Dundas Street

Part of Lot 8, Concession 1 (Geographic Township of London) in the City of London, County of Middlesex, designated as Parts 4 and 5 on Plan of Survey by Callon Dietz Surveyors dated March 2, 2023, Plan No. E-1671, being part of PIN 08106-0137

246 Paardeberg Crescent

Part of Lot 1, Registered Plan 369 (C) (Geographic Township of London) in the City of London, County of Middlesex designated as Part 25 and 29 Plan 33R-21583 being part of PIN 08099-0468

248 Paardeberg Crescent

Part of Lot 1, Registered Plan 369 (C) (Geographic Township of London) in the City of London, County of Middlesex designated as Parts 24, 30, and 31 Plan 33R-21583 being part of PIN 08099-0467 and Part 16, 32, 33 and 34 Plan 33R-21583 being part of PIN 08099-0446

1300 Oxford Street

Part of Lot 8, Concession 2 (Geographic Township of London) in the City of London, County of Middlesex designated as Parts 6, 7, 8, 12, and 13 Plan 33R-21587 being part of PIN 08105-0052

250 Paardeberg Crescent

Part of Lot 1, Registered Plan 369 (C) (Geographic Township of London) in the City of London, County of Middlesex designated as Part 14 and 37 Plan 33R-21583 being part of PIN 08099-0325

Limited Interest (Temporary Easement):

1015-1019 Dundas Street

Part of Lots 14,15,16, and 17 South of Dundas Street Registered Plan 320 (3) in the City of London, County of Middlesex, designated as Part 2 Plan 33R-21423 being Part of PIN 08303-0094

1033 Dundas Street

Part of Lots 12 and 13 South of Dundas Street Registered Plan 320 (3) in the City of London, County of Middlesex, designated as Parts 5 and 6 Plan 33R-21423 being Part of PIN 08303-0002

1051 Dundas Street

Part of Lot 8 South of Dundas Street Registered Plan 320 (3) in the City of London, County of Middlesex, designated as Parts 10, and 11 Plan 33R-21423 being Part of PIN 08303-0007 AND Part of Lot 9 South of Dundas Street Registered Plan 320 (3) in the City of London, County of Middlesex, designated as Part 9 Plan 33R-21423 being Part of PIN 08303-0007

1080 Dundas Street

Part of Lots 1, 2, 3 and 4, Registered Plan 471 (C) (Geographic Township of London) in the City of London, County of Middlesex, designated as Part 2 on Plan of Survey by AGM Surveyors dated March 22, 2023, Plan No. 8-L-6053-Z, being part of PIN 08288-0325

1140 Dundas Street

Part of Block D, Registered Plan 494 (C) (Geographic Township of London) in the City of London, County of Middlesex designated as Part 4 Plan 33R-21499 being part of PIN 08289-0017

1144 Dundas Street

Part of Block D, Registered Plan 494 (C) (Geographic Township of London) in the City of London, County of Middlesex designated as Part 6 Plan 33R-21499 being part of PIN 08289-0057

1152 Dundas Street

Part of Block D, Registered Plan 494 (C) (Geographic Township of London) in the City of London, County of Middlesex designated as Part 8 Plan 33R-21499 being part of PIN 08289-0013

1153 - 1155 Dundas Street

Part of Lots 9 and 10, Registered Plan 398 (C) (Geographic Township of London) in the City of London, County of Middlesex designated as Parts 10 and 12 Plan 33R-21499 being part of PIN 08301-0001

1220 Dundas Street

Part of Lots 9 and 10, Registered Plan 494 (C) (Geographic Township of London) in the City of London, County of Middlesex designated as Part 1 Plan 33R-21509 being part of PIN 08290-0175

1224 Dundas Street

Part of Lot 8, Registered Plan 494 (C) (Geographic Township of London) in the City of London, County of Middlesex designated as Part 5 Plan 33R-21509 being part of PIN 08290-0176

1228 Dundas Street

Part of Lot 6, Registered Plan 494 (C) (Geographic Township of London) in the City of London, County of Middlesex designated as Part 9 Plan 33R-21509 being part of PIN 08290-0178

1230 Dundas Street

Part of Lot 5, Registered Plan 494 (C) (Geographic Township of London) in the City of London, County of Middlesex designated as Part 10 Plan 33R-21509 being part of PIN 08290-0179

1232 Dundas Street

Part of Lot 4, Registered Plan 494 (C) (Geographic Township of London) in the City of London, County of Middlesex designated as Part 13 Plan 33R-21509 being part of PIN 08290-0180

1240 Dundas Street

Part of Lot 3, Registered Plan 494 (C) (Geographic Township of London) in the City of London, County of Middlesex designated as Part 14 Plan 33R-21509 being part of PIN 08290-0181

1242 Dundas Street

Part of Lot 2, Registered Plan 494 (C) (Geographic Township of London) in the City of London, County of Middlesex designated as Part 16 Plan 33R-21509 being part of PIN 08290-0182

1232 Oxford Street

Part of Lot 1, Registered Plan 369 (C) (Geographic Township of London) in the City of London, County of Middlesex designated as Parts 6 and 7 Plan 33R-21583 being part of PIN 08099-0444

1299 Oxford Street

Part of Lot 9, Concession 1 (Geographic Township of London) in the City of London, County of Middlesex designated as Parts 1 and 2 Plan 33R-21588 being part of PIN 08290-0220

847 Highbury Avenue

Part of Lot 9, Concession 1 (Geographic Township of London) in the City of London, County of Middlesex designated as Parts 1,8,10,13, and 14 Plan 33R-21586 being part of PIN 08290-0220

1340 Dundas Street

Part of Lot 8, Concession 1 (Geographic Township of London) in the City of London, County of Middlesex, designated as Parts 3 and 6 on Plan of Survey by Callon Dietz Surveyors dated March 2, 2023, Plan No. E-1671, being part of PIN 08106-013

246 Paardeberg Crescent

Part of Lot 1, Registered Plan 369 (C) (Geographic Township of London) in the City of London, County of Middlesex designated as Part 5 Plan 33R-21583 being part of PIN 08099-0468

248 Paardeberg Crescent

Part of Lot 1, Registered Plan 369 (C) (Geographic Township of London) in the City of London, County of Middlesex designated as Parts 9, 10 and 11 Plan 33R-21583 being part of PIN 08099-0467 and Part 12, 35 and 36 Plan 33R-21583 being part of PIN 08099-0446

1300 Oxford Street

Part of Lot 8, Concession 2 (Geographic Township of London) in the City of London, County of Middlesex designated as Parts 2, 3, 9, 10, 11, 14, and 15 Plan 33R-21587 being part of PIN 08105-0052

250 Paardeberg Crescent

Part of Lot 1, Registered Plan 369 (C) (Geographic Township of London) in the City of London, County of Middlesex designated as Part 13 Plan 33R-21583 being part of PIN 08099-0325

Limited Interest (Permanent Easement):

1033 Dundas Street

Part of Lot 13 South of Dundas Street Registered Plan 320 (3) in the City of London, County of Middlesex, designated as Parts 6 and 7 Plan 33R-21423 being Part of PIN 08303-0002

1051 Dundas Street

Part of Lot 8 South of Dundas Street Registered Plan 320 (3) Geographic in the City of London, County of Middlesex, designated as Parts 11 and 12 Plan 33R-21423 being Part of PIN 08303-0007

1153 - 1155 Dundas Street

Part of Lot 9, Registered Plan 398 (C) (Geographic Township of London) in the City of London, County of Middlesex designated as Parts 9 and 10 Plan 33R-21499 being part of PIN 08301-0001

1181 Dundas Street

Part of Lot 2, Registered Plan 413 (C) (Geographic Township of London) in the City of London, County of Middlesex designated as Part 13 Plan 33R-21499 being part of PIN 08301-0003

1260 Dundas Street

Part of Lot 9, Concession 1 (Geographic Township of London) in the City of London, County of Middlesex, designated as Parts 8, 9, 10 and 11 on Plan of Survey by Callon Dietz Surveyors dated March 2, 2023, Plan No. E-1671, being part of PIN 08290-0233

1299 Oxford Street

Part of Lot 9, Concession 1 (Geographic Township of London) in the City of London, County of Middlesex designated as Parts 2, 3, and 5 Plan 33R-21588 being part of PIN 08290-0240 and designated as Parts 4 and 6 Plan 33R-21588 being part of PIN 08290-0212

432 Dorinda

Part of Lot 1, East of Dorinda St., Registered Plan 316 (3rd) in the City of London, County of Middlesex designated as Parts 1 and 2 Plan 33R-21538 being part of PIN 08288-0262

1305 Dundas Street

Part of Lots 1 and 6, Registered Plan 432 (C) (Geographic Township of London) in the City of London, County of Middlesex designated as Part 4 Plan 33R-21527 being part of PIN 08291-0205

1331 Dundas Street

Part of Lots 4, 5, 10 and 13 and part of Block C, Registered Plan 457 (C) (Geographic Township of London) in the City of London, County of Middlesex designated as Part 2 on Plan 33R-21527 being part of PIN 08292-0001

847 Highbury Avenue

Part of Lot 9, Concession 1 (Geographic Township of London) in the City of London, County of Middlesex designated as Parts 2, 6, 7, 10, 11 and 12 Plan 33R-21586 being part of PIN 08290-0220

1340 Dundas Street

Part of Lot 8, Concession 1 (Geographic Township of London) in the City of London, County of Middlesex, designated as Part 2 on Plan of Survey by Callon Dietz Surveyors dated March 2, 2023, Plan No. E-1671, being part of PIN 08106-0137

246 Paardeberg Crescent

Part of Lot 1, Registered Plan 369 (C) (Geographic Township of London) in the City of London, County of Middlesex designated as Parts 1, 2, 3, 4, 5 and 9 Plan 33R-21583 being part of PIN 08099-0468

248 Paardeberg Crescent

Part of Lot 1, Registered Plan 369 (C) (Geographic Township of London) in the City of London, County of Middlesex designated as Parts 10 Plan 33R-21583 being part of PIN 08099-0467 and Part 35 Plan 33R-21583 being part of PIN 08099-0446

1300 Oxford Street

Part of Lot 8, Concession 2 (Geographic Township of London) in the City of London, County of Middlesex designated as Parts 1, 4, 14 and 16 Plan 33R-21587 being part of PIN 08105-0052

681 Highbury Avenue

Part of Lot 7, Registered Plan 432 (C) (Geographic Township of London) in the City of London, County of Middlesex designated as Part 3 on Plan 33R-21527 being part of PIN 08290-0035

Any owner of land in respect of which notice is given who desires a hearing into whether the taking of such land is fair, sound and reasonably necessary in the achievement of the objectives of the expropriating authority shall so notify the approving authority in writing,

- a) in the case of a registered owner, served personally or by registered mail within thirty days after the registered owner is served with the notice, or, when the registered owner is served by publication, within thirty days after the first publication of the notice;

- b) in the case of an owner who is not a registered owner, within thirty days after the first publication of the notice.

The approving authority is:

The Council of The Corporation of the City of London
City Hall
300 Dufferin Avenue
P.O. Box 5035
London ON N6A 4L9

The expropriating authority is:

THE CORPORATION OF THE CITY OF LONDON

MICHAEL SCHULTHESS
CITY CLERK

