

## Report to Corporate Services Committee

**To:** Chair and Members  
Corporate Services Committee

**From:** Kelly Scherr, P. Eng., MBA, FEC, Deputy City Manager  
Environment and Infrastructure

**Subject:** Expropriation of Lands - Wellington Gateway Project Phase 3&4

**Date:** May 23, 2023

## Recommendation

That, on the recommendation of the Deputy City Manager, Environment and Infrastructure, with the concurrence of the Director, Construction and Infrastructure Services, on the advice of the Director, Realty Services, approval **BE GIVEN** to the expropriation of land as may be required for the Wellington Gateway Project and that the following actions **BE TAKEN** in connection therewith:

- a) application be made by The Corporation of the City of London as Expropriating Authority to the Council of The Corporation of the City of London as approving authority, for the approval to expropriate the land required for the Wellington Gateway Project;
- b) The Corporation of the City of London serve and publish notice of the above application in accordance with the terms of the *Expropriations Act*;
- c) The Corporation of the City of London forward to the Ontario Land Tribunal any requests for a hearing that may be received and report such to the Council of The Corporation of the City of London for its information; and
- d) the attached Bylaw (Schedule "B") **BE INTRODUCED** at the Council meeting on June 6th, 2023, to authorize the foregoing and direct the Civic Administration to carry out all necessary administrative actions.

## Executive Summary

The purpose of this report is to seek Municipal Council approval for the expropriation of lands required by The Corporation of the City of London for the Wellington Gateway Project, Phase 3 & 4.

Multiple property needs have been identified to accommodate the project design and legal possession is required prior to advancing utility work and awarding the construction contract.

Forty-Eight (48) properties remain outstanding. Realty Services will continue to negotiate with the outstanding property owners in parallel the expropriation process.

## Linkage to the Corporate Strategic Plan

The following report supports the Strategic Plan through the strategic focus area of Mobility and Transportation by building new transportation infrastructure as London grows. The improvements to this corridor will enhance safety and provide convenient mobility choices for transit, automobiles, pedestrians and cyclists.

# Analysis

## 1.0 Background Information

### 1.1 Previous Reports Related to this Matter

- Civic Works Committee – June 19, 2012 – London 2030 Transportation Master Plan;
- Civic Works Committee – July 21, 2014 – Rapid Transit Corridors Environmental Assessment Study Appointment of Consulting Engineer;
- Strategic Priorities and Policy Committee – July 24, 2017 – Rapid Transit Master Plan and Business Case;
- Strategic Priorities and Policy Committee – April 23, 2018 – Bus Rapid Transit Environmental Assessment Initiative;
- Civic Works Committee – March 14, 2019 – History of London’s Rapid Transit Initiative; and
- Strategic Priorities and Policy Committee – March 25, 2019 – Investing in Canada Infrastructure Program, Public Transit Stream, Transportation Projects for Submission;
- Strategic Priorities and Policy Committee – October 28, 2019 – Investing in Canada Infrastructure Program, Public Transit Infrastructure Stream, Approved Projects;
- Civic Works Committee – January 7, 2020 – Downtown Loop and Municipal Infrastructure Improvements Appointment of Consulting Engineer
- Civic Works Committee – August 11, 2020 – East London Link Transit and Municipal Infrastructure Improvements – Appointment of Consulting Engineer
- Civic Works Committee – August 11, 2020 – Wellington Gateway Transit and Municipal Infrastructure Improvements – Appointment of Consulting Engineer

## 2.0 Discussion and Considerations

### 2.1 Background

The Wellington Gateway Project will revitalize approximately six kilometres of key arterial road between Downtown and Highway 401. The project will widen Wellington Road to add continuous transit-only lanes. The goal is to improve traffic capacity and increase transit frequency and reliability while also addressing necessary underground work, including replacing aging sewers and underground infrastructure.

The project has received Provincial approval of the Environmental Assessment (EA) which identified requirements for property acquisitions.

Due to the growing use of these roads and developments in the area, combined with operational needs to improve safety and support for all travel modes, the Wellington Gateway Project was identified as a priority to deliver a critical component of London’s rapid transit system, a central component of London’s land use and transportation policy.

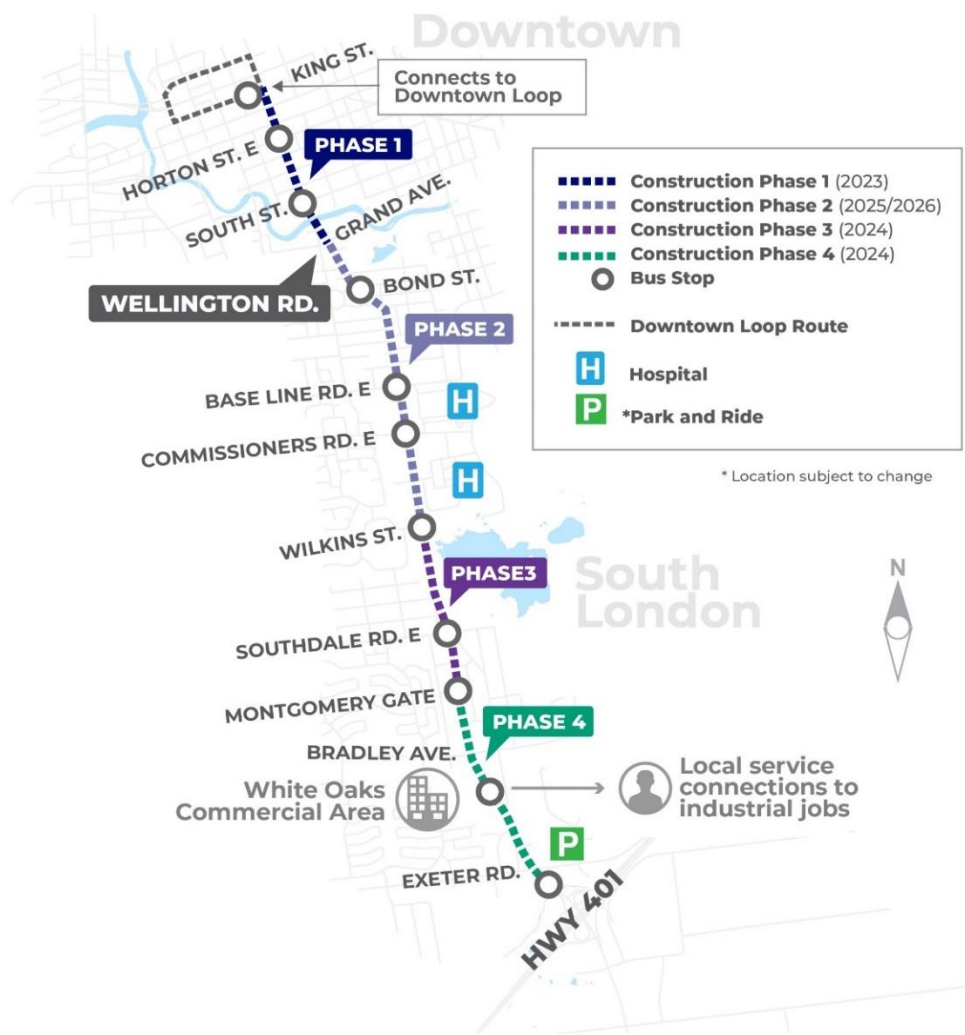


Figure 1 illustrates the limits of the Wellington Gateway project and its four construction phases.

Figure 1: Wellington Gateway Project Limits and Design Segments

## 2.2 Anticipated Construction Timeline

The Wellington Gateway is planned for construction from 2023 and 2027 with a phased approach.

The first phase of construction began this year building Wellington Street from York Street to just north of Clarks Bridge over the Thames River.

The second year of Wellington Gateway construction is scheduled to begin in 2024 subject to property acquisition and other approvals. Design Phases 3 and 4 will build Wellington Road from Exeter Road north to Wilkins Street. Some utility relocations and tree removals will be completed prior to capital construction. See Figure 1.

Negotiations with all property owners in Phases 3 and 4 have been ongoing since late spring / summer 2022. As legal possession of all property requirements will be needed to commence utility work and award a construction contract, the expropriation of all outstanding property is necessary. The legal possession requirements consist of 1 full buyout, 15 partial takings, 22 permanent easements, and 45 temporary easements.

Realty Services continues to negotiate with the outstanding property owners in parallel with the Council approval to proceed with the expropriation process to meet the project construction timelines.

Location Maps and legal descriptions of outstanding property requirements are included as Schedule A.

## **3.0 Financial Implications and Considerations**

### **3.1 Compensation for Land Acquisition**

Impacted property owner's compensation is protected through the expropriation legislation and Council Property Acquisition Policy. If negotiated property compensation settlements can not be achieved on an amicable basis, the compensation may be arbitrated through the Ontario Land Tribunal.

There is budget available for Wellington Gateway land acquisition costs relating to Phase 3 and 4 property acquisitions.

## **Conclusion**

Construction of Wellington Gateway Phases 3 and 4 are scheduled for 2024 subject to property acquisition and other approvals. Property acquisitions need to be secured prior to commencing advance utility work and awarding the construction contract.

Commencement of the expropriation process is recommended at this time to ensure project timelines are achieved.

Realty Services will continue to negotiate with the outstanding property owners in parallel with the expropriation process.

**Prepared by:** Ron Sanderson, AACI, Manager II, Realty Services

**Submitted by:** Bill Warner, AACI, Director, Realty Services

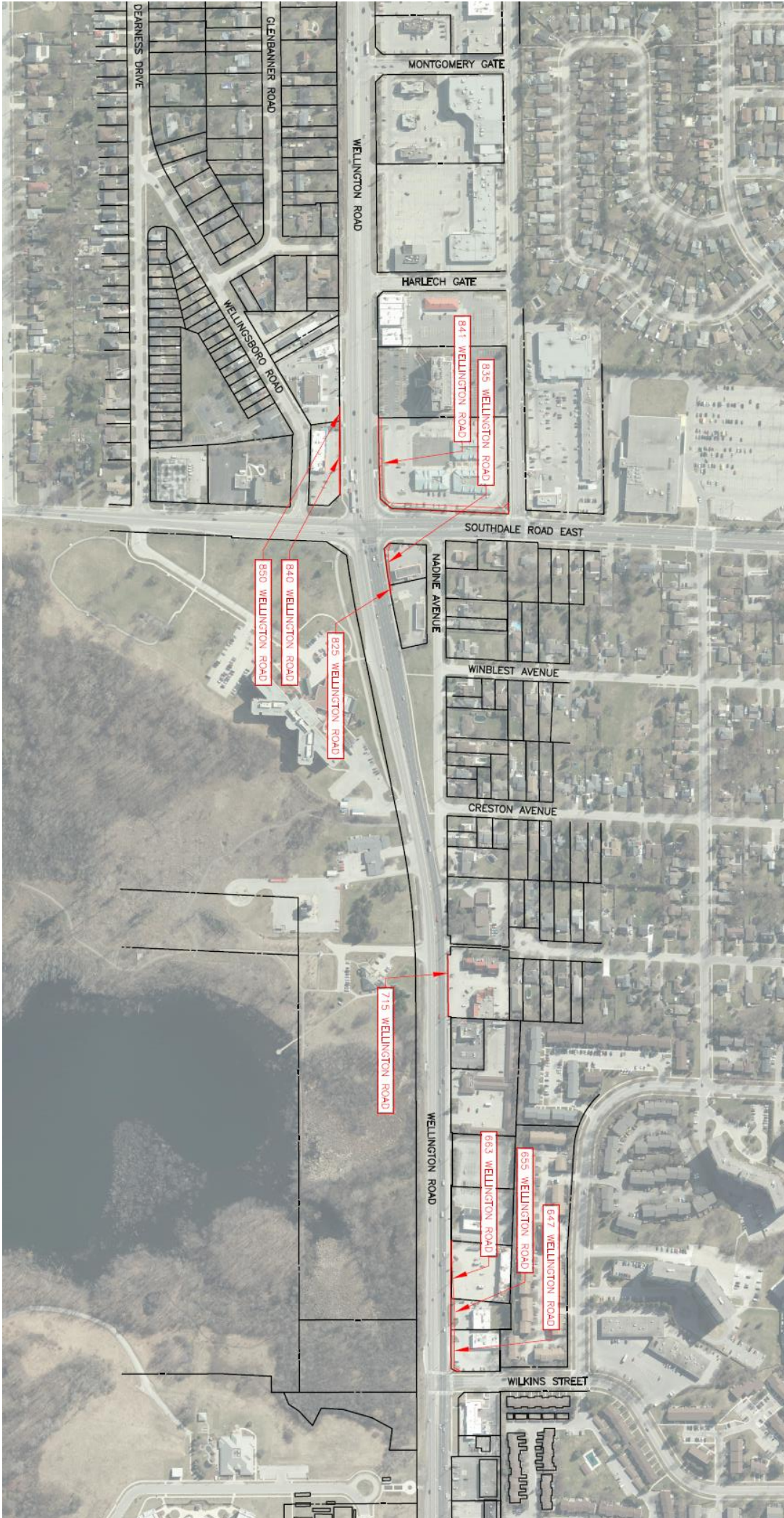
**Concurred by:** Jennie Dann, P. Eng., Director, Construction and Infrastructure Services

**Recommended by:** Kelly Scherr, P. Eng., MBA, FEC, Deputy City Manager, Environment and Infrastructure

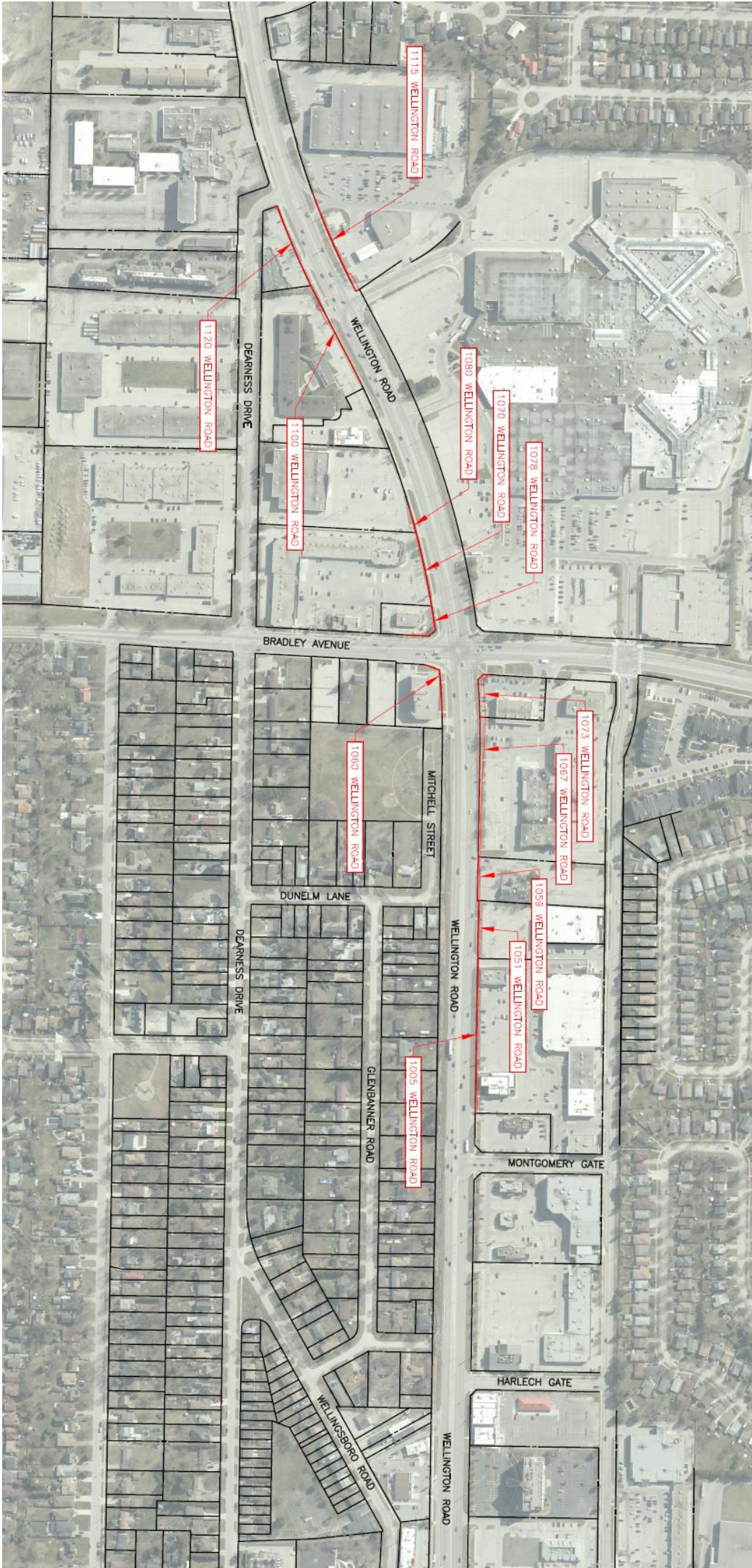
May 15, 2023

Schedule A - Location Maps

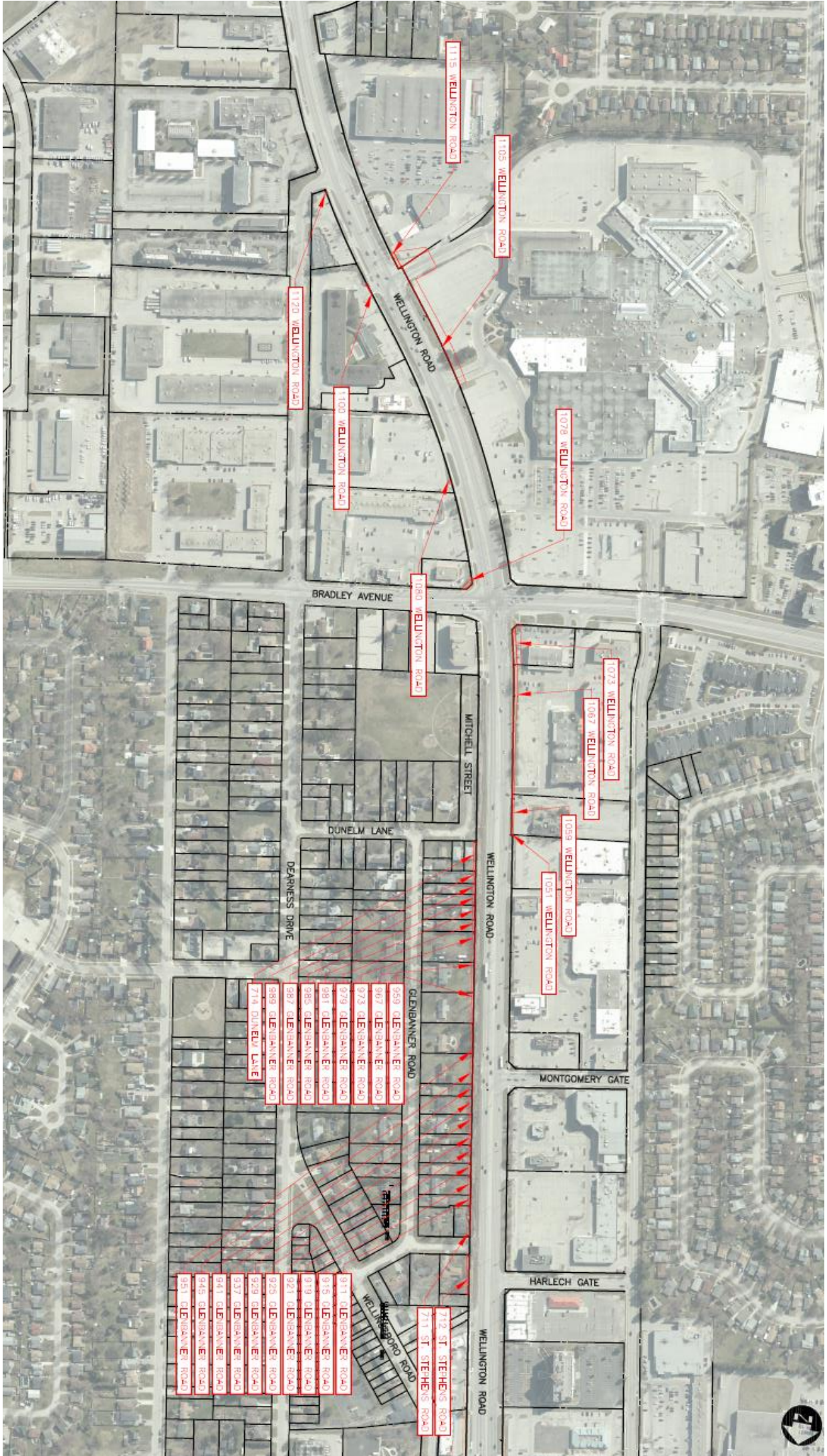
PHASE 3



PHASE 4



PHASE 4



## Schedule A

### Fee Simple:

615 Wellington Road:

Part of Lot 7, Registered Plan 635 in the City of London, County of Middlesex designated as Part 1, Plan 33R-21500 being part of PIN 08470-0080

647 Wellington Road:

Part of Lots 2 and 3, Registered Plan 635 in the City of London, County of Middlesex, designated as Part 3, Plan 33R-21500 being part of PIN 08466-0024 and Part of Lot 2, Registered Plan 635 in the City of London, County of Middlesex, designated as Part 5, Plan 33R-21500 being part of PIN 08466-0024

655 Wellington Road:

Part of Lots 1 & 2, on Registered Plan 635, in the City of London, County of Middlesex designated as Part 7 on Plan 33R-21500 being part of PIN 08466-0025

663 Wellington Road:

Part of Lot 25, Concession 1 (Geographic Township of Westminster) in the City of London, County of Middlesex, designated as Part 9, Plan 33R-21500 being part of PIN 08466-0026

825 Wellington Road:

Part of Lot 24, Concession 1 (Geographic Township of Westminster) being Part of the Forced Road Allowance also known as Wellington Rd (Closed by By-Law S-1015-373, Registered as Inst. No. 236473) in the City of London, County of Middlesex, designated as Part 3, Plan 33R-21504 being part of PIN 08471-0027

835 Wellington Road:

Part of Lot 24, Concession 1 (Geographic Township of Westminster) being Part of the Forced Road Allowance also known as Wellington Rd (Closed by By-Law S-1015-373, Registered as Inst. No. 236473) in the City of London, County of Middlesex, designated as Part 1, Plan 33R-21504 being part of PIN 08471-0028

840 Wellington Road:

Part of Lot 25, Concession 2 (Geographic Township of Westminster) in the City of London, County of Middlesex, designated as Part 6, Plan 33R-21504 being part of PIN 08493-0002

850-870 Wellington Road:

Part of Lot 25, Concession 2 (Geographic Township of Westminster) in the City of London, County of Middlesex, designated as Part 8, Plan 33R-21504 being part of PIN 08493-0003

1060 Wellington Road:

Part of Mitchell Street (Closed by By-Law S-3697-586, Registered as Inst. No. LT357133), Registered Plan 746 in the City of London, County of Middlesex, designated as Part 7, Plan 33R-21522 being part of PIN 08493-0278

1070 Wellington Road:

Part of Lot 25, Concessions 2 (Geographic Township of Westminster) in the City of London, County of Middlesex designated as Parts 11 and 12, Plan 33R-21522 being part of PIN 08485-0001

1073 Wellington Road:

Part of Lot 25, Concessions 2 (Geographic Township of Westminster) in the City of London, County of Middlesex designated as Part 2, Plan 33R-21519 being part of PIN 08494-0336



1078 Wellington Road:

Part of Lot 25, Concessions 2 (Geographic Township of Westminster) in the City of London, County of Middlesex designated as Part 8, Plan 33R-21522 being part of PIN 08485-0185

1100 Wellington Road:

Part of Lot 25, Concessions 2 (Geographic Township of Westminster) in the City of London, County of Middlesex designated as Part 2, Plan 33R-21516 being part of PIN 08485-0249

1105 Wellington Road:

Part of Lot 25, Concessions 2 (Geographic Township of Westminster) in the City of London, County of Middlesex designated as Parts 20, 21, 22 and 23, Plan 33R-21547 being part of PIN 08495-0273

1115 Wellington Road:

Part of Lot 25, Concessions 2 (Geographic Township of Westminster) in the City of London, County of Middlesex designated as Parts 8 and 15, Plan 33R-21547 being part of PIN 08485-0251

1241 Wellington Road:

Lot 4, Plan 880, Geographic Township of Westminster, in the City of London, County of Middlesex, being all of PIN 08485-0016, Part Block A, RP 653 and Part Lot 24, Concession 2, designated as Part 1 on 33R-11797, Geographic Township of Westminster, in the City of London, County of Middlesex, being all of PIN 08485-0198.

**Limited Interest (Permanent Easement):**

711 St. Stephens Road:

Part of Lot 29, Registered Plan 746 in the City of London, County of Middlesex, designated as Part 4, Plan 33R-21533 being part of PIN 08493-0011

915 Glenbanner Road:

Part of Lot 30, Registered Plan 746 in the City of London, County of Middlesex, designated as Part 12, Plan 33R-21533 being part of PIN 08493-0014

919 Glenbanner Road:

Part of Lot 31, Registered Plan 746 in the City of London, County of Middlesex, designated as Part 15, Plan 33R-21533 being part of PIN 08493-0015

921 Glenbanner Road:

Part of Lot 31, Registered Plan 746 in the City of London, County of Middlesex, designated as Part 18, Plan 33R-21533 being part of PIN 08493-0016

925 Glenbanner Road:

Part of Lot 32, Registered Plan 746 in the City of London, County of Middlesex, designated as Part 21, Plan 33R-21533 being part of PIN 08493-0017

929 Glenbanner Road:

Part of Lot 32, Registered Plan 746 in the City of London, County of Middlesex, designated as Part 24, Plan 33R-21533 being part of PIN 08493-0018

937 Glenbanner Road:

Part of Lot 33, Registered Plan 746 in the City of London, County of Middlesex, designated as Part 27, Plan 33R-21533 being part of PIN 08493-0019

941 Glenbanner Road:

Part of Lot 33, Registered Plan 746 in the City of London, County of Middlesex, designated as Part 30, Plan 33R-21533 being part of PIN 08493-0020

945 Glenbanner Road:

Part of Lot 34, Registered Plan 746 in the City of London, County of Middlesex, designated as Part 33, Plan 33R-21533 being part of PIN 08493-0021

951 Glenbanner Road:

Part of Lot 35, Registered Plan 746 in the City of London, County of Middlesex, designated as Part 36, Plan 33R-21533 being part of PIN 08493-0022

959 Glenbanner Road:

Part of Lot 36, Registered Plan 746 in the City of London, County of Middlesex, designated as Part 38, Plan 33R-21533 being part of PIN 08493-0023

967 Glenbanner Road:

Part of Lot 37, Registered Plan 746 in the City of London, County of Middlesex, designated as Part 42, Plan 33R-21533 being part of PIN 08493-0024

973 Glenbanner Road:

Part of Lot 38, Registered Plan 746 in the City of London, County of Middlesex, designated as Part 45, Plan 33R-21533 being part of PIN 08493-0025

979 Glenbanner Road:

Part of Lot 39, Registered Plan 746 in the City of London, County of Middlesex, designated as Part 46, Plan 33R-21533 being part of PIN 08493-0281

981 Glenbanner Road:

Part of Lot 39, Registered Plan 746 in the City of London, County of Middlesex, designated as Part 51, Plan 33R-21533 being part of PIN 08493-0282

985 Glenbanner Road:

Part of Lot 40, Registered Plan 746 in the City of London, County of Middlesex, designated as Part 54, Plan 33R-21533 being part of PIN 08493-0283

987 Glenbanner Road:

Part of Lot 40, Registered Plan 746 in the City of London, County of Middlesex, designated as Part 57, Plan 33R-21533 being part of PIN 08493-0284

989 Glenbanner Road:

Part of Lot 40, Registered Plan 746 in the City of London, County of Middlesex, designated as Part 60, Plan 33R-21533 being part of PIN 08493-0285

714 Dunelm Lane:

Part of Lot 41, Registered Plan 746 in the City of London, County of Middlesex, designated as Part 62, Plan 33R-21533 being part of PIN 08493-0027

1080 Wellington Road:

Part of Lot 25, Concessions 2 (Geographic Township of Westminster) in the City of London, County of Middlesex designated as Parts 15 and 16, Plan 33R-21522 being part of PIN 08485-0002

1105 Wellington Road:

Part of Lot 25, Concessions 2 (Geographic Township of Westminster) in the City of London, County of Middlesex designated as Parts 2, 4 and 5 , Plan 33R-21547 being part of PIN 08495-0273

1120 Wellington Road:

Part of Lot 25, Concessions 2 (Geographic Township of Westminster) in the City of London, County of Middlesex designated as Part 5 Plan 33R-21516 being part of PIN 08485-0004

### **Limited Interest (Temporary Easement):**

615 Wellington Road:

Part of Lot 7, Registered Plan 635 in the City of London, County of Middlesex designated as Part 2, Plan 33R-21500 being part of PIN 08470-0080

647 Wellington Road:

Part of Lots 2 and 3, Registered Plan 635 in the City of London, County of Middlesex, designated as Part 4, Plan 33R-21500 being part of PIN 08466-0024 and Part of Lot 2, Registered Plan 635 in the City of London, County of Middlesex, designated as Part 6, Plan 33R-21500 being part of PIN 08466-0024

655 Wellington Road:

Part of Lots 1 & 2, on Registered Plan 635, in the City of London, County of Middlesex designated as Part 8 on Plan 33R-21500 being part of PIN 08466-0025

663 Wellington Road:

Part of Lot 25, Concession 1 (Geographic Township of Westminster) in the City of London, County of Middlesex, designated as Part 10, Plan 33R-21500 being part of PIN 08466-0026

825 Wellington Road:

Part of Lot 24, Concession 1 (Geographic Township of Westminster) being Part of the Forced Road Allowance also known as Wellington Rd (Closed by By-Law S-1015-373, Registered as Inst. No. 236473) in the City of London, County of Middlesex, designated as Part 4, Plan 33R-21504 being part of PIN 08471-0027

835 Wellington Road:

Part of Lot 24, Concession 1 (Geographic Township of Westminster) being Part of the Forced Road Allowance also known as Wellington Rd (Closed by By-Law S-1015-373, Registered as Inst. No. 236473) in the City of London, County of Middlesex, designated as Part 2, Plan 33R-21504 being part of PIN 08471-0028

840 Wellington Road:

Part of Lot 25, Concession 2 (Geographic Township of Westminster) being Part of the Forced Road Allowance also known as Wellington Rd (Closed by By-Law S-643-377, Registered as Inst. No. 170662) in the City of London, County of Middlesex, designated as Part 5, Plan 33R-21504 being part of PIN 08493-0001 and Part of Lot 25, Concession 2 (Geographic Township of Westminster) in the City of London, County of Middlesex, designated as Part 7, Plan 33R-21504 being part of PIN 08493-0002

850-870 Wellington Road:

Part of Lot 25, Concession 2 (Geographic Township of Westminster) in the City of London, County of Middlesex, designated as Parts 9, 10 and 11, Plan 33R-21504 being part of PIN 08493-0003

855 Wellington Road:

Part of Lot 25, Concession 2 (Geographic Township of Westminster) in the City of London, County of Middlesex designated as Parts 2 and 3, Plan 33R-21546 being part of PIN 08494-0344

977 Wellington Road:

Part of Lot 25, Concession 2 (Geographic Township of Westminster) in the City of London, County of Middlesex, designated as Part 6, Plan 33R-21575 being part of PIN 08494-0342

993 Wellington Road:

Part of Lot 25, Concession 2 (Geographic Township of Westminster) in the City of London, County of Middlesex, designated as Part 7, Plan 33R-21575 being part of PIN 08494-0341

1001 Wellington Road:

Part of Lot 25, Concession 2 (Geographic Township of Westminster) in the City of London, County of Middlesex, designated as Parts 1 and 2, Plan 33R-21582 being part of PIN 08494-0340

1005 Wellington Road:

Part of Lot 25, Concession 2 (Geographic Township of Westminster) in the City of London, County of Middlesex, designated as Parts 3 and 8, Plan 33R-21582 being part of PIN 08494-0339

711 St. Stephens Road:

Part of Lot 29, Registered Plan 746 in the City of London, County of Middlesex, designated as Parts 1, 2, 3, 5 and 6, Plan 33R-21533 being part of PIN 08493-0011

712 St. Stephens Road:

Part of Lot 1, Registered Plan 746 in the City of London, County of Middlesex, designated as Parts 1 and 2, Plan 33R-21575 being part of PIN 08493-0259 and Part of Lot 1, Registered Plan 746 in the City of London, County of Middlesex, designated as Parts 3, 4 and 5, Plan 33R-21575 being part of PIN 08493-0260

915 Glenbanner Road:

Part of Lot 30, Registered Plan 746 in the City of London, County of Middlesex, designated as Parts 10 and 11, Plan 33R-21533 being part of PIN 08493-0014

919 Glenbanner Road:

Part of Lot 31, Registered Plan 746 in the City of London, County of Middlesex, designated as Parts 13 and 14, Plan 33R-21533 being part of PIN 08493-0015

921 Glenbanner Road:

Part of Lot 31, Registered Plan 746 in the City of London, County of Middlesex, designated as Parts 16 and 17, Plan 33R-21533 being part of PIN 08493-0016

925 Glenbanner Road:

Part of Lot 32, Registered Plan 746 in the City of London, County of Middlesex, designated as Parts 19 and 20, Plan 33R-21533 being part of PIN 08493-0017

929 Glenbanner Road:

Part of Lot 32, Registered Plan 746 in the City of London, County of Middlesex, designated as Parts 22 and 23, Plan 33R-21533 being part of PIN 08493-0018

937 Glenbanner Road:

Part of Lot 33, Registered Plan 746 in the City of London, County of Middlesex, designated as Parts 25 and 26, Plan 33R-21533 being part of PIN 08493-0019

941 Glenbanner Road:

Part of Lot 33, Registered Plan 746 in the City of London, County of Middlesex, designated as Parts 28 and 29, Plan 33R-21533 being part of PIN 08493-0020

945 Glenbanner Road:

Part of Lot 34, Registered Plan 746 in the City of London, County of Middlesex, designated as Parts 31 and 32, Plan 33R-21533 being part of PIN 08493-0021

951 Glenbanner Road:

Part of Lot 35, Registered Plan 746 in the City of London, County of Middlesex, designated as Parts 34 and 35, Plan 33R-21533 being part of PIN 08493-0022

959 Glenbanner Road:

Part of Lot 36, Registered Plan 746 in the City of London, County of Middlesex, designated as Parts 37 and 39, Plan 33R-21533 being part of PIN 08493-0023

967 Glenbanner Road:

Part of Lot 37, Registered Plan 746 in the City of London, County of Middlesex, designated as Parts 40 and 41, Plan 33R-21533 being part of PIN 08493-0024

973 Glenbanner Road:

Part of Lot 38, Registered Plan 746 in the City of London, County of Middlesex, designated as Parts 43 and 44, Plan 33R-21533 being part of PIN 08493-0025

979 Glenbanner Road:

Part of Lot 39, Registered Plan 746 in the City of London, County of Middlesex, designated as Parts 47 and 48, Plan 33R-21533 being part of PIN 08493-0281

981 Glenbanner Road:

Part of Lot 39, Registered Plan 746 in the City of London, County of Middlesex, designated as Parts 49 and 50, Plan 33R-21533 being part of PIN 08493-0282

985 Glenbanner Road:

Part of Lots 39 and 40, Registered Plan 746 in the City of London, County of Middlesex, designated as Parts 52 and 53, Plan 33R-21533 being part of PIN 08493-0283

987 Glenbanner Road:

Part of Lot 40, Registered Plan 746 in the City of London, County of Middlesex, designated as Parts 55 and 56, Plan 33R-21533 being part of PIN 08493-0284

989 Glenbanner Road:

Part of Lot 40, Registered Plan 746 in the City of London, County of Middlesex, designated as Parts 58 and 59, Plan 33R-21533 being part of PIN 08493-0285

714 Dunelm Lane:

Part of Lot 41, Registered Plan 746 in the City of London, County of Middlesex, designated as Parts 61 and 63, Plan 33R-21533 being part of PIN 08493-0027

1051 Wellington Road:

Part of Lot 25, Concessions 2 (Geographic Township of Westminster) in the City of London, County of Middlesex designated as Part 5, Plan 33R-21582 being part of PIN 08494-0338

1059 Wellington Road:

Part of Lot 25, Concessions 2 (Geographic Township of Westminster) in the City of London, County of Middlesex designated as Parts 6 and 7, Plan 33R-21582 being part of PIN 08494-0337

1060 Wellington Road:

Part of Mitchell Street (Closed by By-Law S-3697-586, Registered as Inst. No. LT357133), Registered Plan 746 in the City of London, County of Middlesex, designated as Parts 1, 2, 3, 4, 5 and 6, Plan 33R-21522 being part of PIN 08493-0278

1070 Wellington Road:

Part of Lot 25, Concessions 2 (Geographic Township of Westminster) in the City of London, County of Middlesex designated as Parts 10 and 13, Plan 33R-21522 being part of PIN 08485-0001

1073 Wellington Road:

Part of Lot 25, Concessions 2 (Geographic Township of Westminster) in the City of London, County of Middlesex designated as Part 1, Plan 33R-21519 being part of PIN 08494-0336

1078 Wellington Road:

Part of Lot 25, Concessions 2 (Geographic Township of Westminster) in the City of London, County of Middlesex designated as Part 9, Plan 33R-21522 being part of PIN 08485-0185

1080 Wellington Road:

Part of Lot 25, Concessions 2 (Geographic Township of Westminster) in the City of London, County of Middlesex designated as Parts 14, 15 and 17, Plan 33R-21522 being part of PIN 08485-0002

1090 Wellington Road:

Part of Lot 25, Concessions 2 (Geographic Township of Westminster) in the City of London, County of Middlesex designated as Part 1, Plan of Survey by Callon Dietz dated March 6, 2023 Plan No. DDD-4157, being part of PIN 08485-0248

1100 Wellington Road:

Part of Lot 25, Concessions 2 (Geographic Township of Westminster) in the City of London, County of Middlesex designated as Parts 1 and 3, Plan 33R-21516 being part of PIN 08485-0249

1105 Wellington Road:

Part of Lot 25, Concessions 2 (Geographic Township of Westminster) in the City of London, County of Middlesex designated as Parts 1, 2, 3, 4, 5, 6 and 7, Plan 33R-21547 being part of PIN 08495-0273

1115 Wellington Road:

Part of Lot 25, Concessions 2 (Geographic Township of Westminster) in the City of London, County of Middlesex designated as Parts 9, 10, 11, 12, 13, 14, 16, 17, 18 and 19 Plan 33R-21547 being part of PIN 08495-0251

1120 Wellington Road:

Part of Lot 25, Concessions 2 (Geographic Township of Westminster) in the City of London, County of Middlesex designated as Parts 4 and 5 Plan 33R-21516 being part of PIN 08485-0004

## Schedule B - By-law

Bill No.  
2021

By-law No. L.S.P.-

A By-law to authorize and approve an application to expropriate land in the City of London, in the County of Middlesex, for the Wellington Gateway Project.

WHEREAS The Corporation of the City of London has made application to the Council of The Corporation of the City of London for approval to expropriate lands for the Wellington Gateway Project;

THEREFORE The Corporation of the City of London, as the expropriating authority, enacts as follows:

1. An application be made by The Corporation of the City of London as Expropriating Authority, to the Council of The Corporation of the City of London as approving authority, for approval to expropriate lands for the Wellington Gateway Project; which land is more particularly described in attached Appendix "A" of this by-law.
2. The Corporation of the City of London as Expropriating Authority serve and publish notice of the application referred to in section 1 of this by-law in the form attached hereto as Appendix "B", being the "Notice of Application for Approval to Expropriate Lands," in accordance with the requirements of the *Expropriations Act*.
3. The Corporation of the City of London as Expropriating Authority forward to the Ontario Land Tribunal, any requests for a hearing that may be received in connection with the notice of this expropriation and report such to the Council of The Corporation of the City of London for its information.
4. The Civic Administration be hereby authorized to carry out all necessary administrative actions in respect of the said expropriation.
5. This by-law comes into force on the day it is passed.

PASSED in Open Council on

---

Josh Morgan, Mayor

---

Michael Schulthess, City Clerk

First Reading  
Second Reading  
Third Reading

## APPENDIX "A"

### To By-law L.S.P.-\_\_\_\_\_

#### DESCRIPTION OF LANDS TO BE EXPROPRIATED FOR THE WELLINGTON GATEWAY PROJECT

##### **Fee Simple:**

615 Wellington Road:

Part of Lot 7, Registered Plan 635 in the City of London, County of Middlesex designated as Part 1, Plan 33R-21500 being part of PIN 08470-0080

647 Wellington Road:

Part of Lots 2 and 3, Registered Plan 635 in the City of London, County of Middlesex, designated as Part 3, Plan 33R-21500 being part of PIN 08466-0024 and Part of Lot 2, Registered Plan 635 in the City of London, County of Middlesex, designated as Part 5, Plan 33R-21500 being part of PIN 08466-0024

655 Wellington Road:

Part of Lots 1 & 2, on Registered Plan 635, in the City of London, County of Middlesex designated as Part 7 on Plan 33R-21500 being part of PIN 08466-0025

663 Wellington Road:

Part of Lot 25, Concession 1 (Geographic Township of Westminster) in the City of London, County of Middlesex, designated as Part 9, Plan 33R-21500 being part of PIN 08466-0026

825 Wellington Road:

Part of Lot 24, Concession 1 (Geographic Township of Westminster) being Part of the Forced Road Allowance also known as Wellington Rd (Closed by By-Law S-1015-373, Registered as Inst. No. 236473) in the City of London, County of Middlesex, designated as Part 3, Plan 33R-21504 being part of PIN 08471-0027

835 Wellington Road:

Part of Lot 24, Concession 1 (Geographic Township of Westminster) being Part of the Forced Road Allowance also known as Wellington Rd (Closed by By-Law S-1015-373, Registered as Inst. No. 236473) in the City of London, County of Middlesex, designated as Part 1, Plan 33R-21504 being part of PIN 08471-0028

840 Wellington Road:

Part of Lot 25, Concession 2 (Geographic Township of Westminster) in the City of London, County of Middlesex, designated as Part 6, Plan 33R-21504 being part of PIN 08493-0002

850-870 Wellington Road:

Part of Lot 25, Concession 2 (Geographic Township of Westminster) in the City of London, County of Middlesex, designated as Part 8, Plan 33R-21504 being part of PIN 08493-0003

1060 Wellington Road:

Part of Mitchell Street (Closed by By-Law S-3697-586, Registered as Inst. No. LT357133), Registered Plan 746 in the City of London, County of Middlesex, designated as Part 7, Plan 33R-21522 being part of PIN 08493-0278

1070 Wellington Road:

Part of Lot 25, Concessions 2 (Geographic Township of Westminster) in the City of London, County of Middlesex designated as Parts 11 and 12, Plan 33R-21522 being part of PIN 08485-0001



1073 Wellington Road:

Part of Lot 25, Concessions 2 (Geographic Township of Westminster) in the City of London, County of Middlesex designated as Part 2, Plan 33R-21519 being part of PIN 08494-0336

1078 Wellington Road:

Part of Lot 25, Concessions 2 (Geographic Township of Westminster) in the City of London, County of Middlesex designated as Part 8, Plan 33R-21522 being part of PIN 08485-0185

1100 Wellington Road:

Part of Lot 25, Concessions 2 (Geographic Township of Westminster) in the City of London, County of Middlesex designated as Part 2, Plan 33R-21516 being part of PIN 08485-0249

1105 Wellington Road:

Part of Lot 25, Concessions 2 (Geographic Township of Westminster) in the City of London, County of Middlesex designated as Parts 20, 21, 22 and 23, Plan 33R-21547 being part of PIN 08495-0273

1115 Wellington Road:

Part of Lot 25, Concessions 2 (Geographic Township of Westminster) in the City of London, County of Middlesex designated as Parts 8 and 15, Plan 33R-21547 being part of PIN 08485-0251

1241 Wellington Road:

Lot 4, Plan 880, Geographic Township of Westminster, in the City of London, County of Middlesex, being all of PIN 08485-0016, Part Block A, RP 653 and Part Lot 24, Concession 2, designated as Part 1 on 33R-11797, Geographic Township of Westminster, in the City of London, County of Middlesex, being all of PIN 08485-0198.

**Limited Interest (Permanent Easement):**

711 St. Stephens Road:

Part of Lot 29, Registered Plan 746 in the City of London, County of Middlesex, designated as Part 4, Plan 33R-21533 being part of PIN 08493-0011

915 Glenbanner Road:

Part of Lot 30, Registered Plan 746 in the City of London, County of Middlesex, designated as Part 12, Plan 33R-21533 being part of PIN 08493-0014

919 Glenbanner Road:

Part of Lot 31, Registered Plan 746 in the City of London, County of Middlesex, designated as Part 15, Plan 33R-21533 being part of PIN 08493-0015

921 Glenbanner Road:

Part of Lot 31, Registered Plan 746 in the City of London, County of Middlesex, designated as Part 18, Plan 33R-21533 being part of PIN 08493-0016

925 Glenbanner Road:

Part of Lot 32, Registered Plan 746 in the City of London, County of Middlesex, designated as Part 21, Plan 33R-21533 being part of PIN 08493-0017

929 Glenbanner Road:

Part of Lot 32, Registered Plan 746 in the City of London, County of Middlesex, designated as Part 24, Plan 33R-21533 being part of PIN 08493-0018

937 Glenbanner Road:

Part of Lot 33, Registered Plan 746 in the City of London, County of Middlesex, designated as Part 27, Plan 33R-21533 being part of PIN 08493-0019

941 Glenbanner Road:

Part of Lot 33, Registered Plan 746 in the City of London, County of Middlesex, designated as Part 30, Plan 33R-21533 being part of PIN 08493-0020

945 Glenbanner Road:

Part of Lot 34, Registered Plan 746 in the City of London, County of Middlesex, designated as Part 33, Plan 33R-21533 being part of PIN 08493-0021

951 Glenbanner Road:

Part of Lot 35, Registered Plan 746 in the City of London, County of Middlesex, designated as Part 36, Plan 33R-21533 being part of PIN 08493-0022

959 Glenbanner Road:

Part of Lot 36, Registered Plan 746 in the City of London, County of Middlesex, designated as Part 38, Plan 33R-21533 being part of PIN 08493-0023

967 Glenbanner Road:

Part of Lot 37, Registered Plan 746 in the City of London, County of Middlesex, designated as Part 42, Plan 33R-21533 being part of PIN 08493-0024

973 Glenbanner Road:

Part of Lot 38, Registered Plan 746 in the City of London, County of Middlesex, designated as Part 45, Plan 33R-21533 being part of PIN 08493-0025

979 Glenbanner Road:

Part of Lot 39, Registered Plan 746 in the City of London, County of Middlesex, designated as Part 46, Plan 33R-21533 being part of PIN 08493-0281

981 Glenbanner Road:

Part of Lot 39, Registered Plan 746 in the City of London, County of Middlesex, designated as Part 51, Plan 33R-21533 being part of PIN 08493-0282

985 Glenbanner Road:

Part of Lot 40, Registered Plan 746 in the City of London, County of Middlesex, designated as Part 54, Plan 33R-21533 being part of PIN 08493-0283

987 Glenbanner Road:

Part of Lot 40, Registered Plan 746 in the City of London, County of Middlesex, designated as Part 57, Plan 33R-21533 being part of PIN 08493-0284

989 Glenbanner Road:

Part of Lot 40, Registered Plan 746 in the City of London, County of Middlesex, designated as Part 60, Plan 33R-21533 being part of PIN 08493-0285

714 Dunelm Lane:

Part of Lot 41, Registered Plan 746 in the City of London, County of Middlesex, designated as Part 62, Plan 33R-21533 being part of PIN 08493-0027

1080 Wellington Road:

Part of Lot 25, Concessions 2 (Geographic Township of Westminster) in the City of London, County of Middlesex designated as Parts 15 and 16, Plan 33R-21522 being part of PIN 08485-0002

1105 Wellington Road:

Part of Lot 25, Concessions 2 (Geographic Township of Westminster) in the City of London, County of Middlesex designated as Parts 2, 4 and 5, Plan 33R-21547 being part of PIN 08495-0273

1120 Wellington Road:

Part of Lot 25, Concessions 2 (Geographic Township of Westminster) in the City of London, County of Middlesex designated as Part 5 Plan 33R-21516 being part of PIN 08485-0004

**Limited Interest (Temporary Easement):**

615 Wellington Road:

Part of Lot 7, Registered Plan 635 in the City of London, County of Middlesex designated as Part 2, Plan 33R-21500 being part of PIN 08470-0080

647 Wellington Road:

Part of Lots 2 and 3, Registered Plan 635 in the City of London, County of Middlesex, designated as Part 4, Plan 33R-21500 being part of PIN 08466-0024 and Part of Lot 2, Registered Plan 635 in the City of London, County of Middlesex, designated as Part 6, Plan 33R-21500 being part of PIN 08466-0024

655 Wellington Road:

Part of Lots 1 & 2, on Registered Plan 635, in the City of London, County of Middlesex designated as Part 8 on Plan 33R-21500 being part of PIN 08466-0025

663 Wellington Road:

Part of Lot 25, Concession 1 (Geographic Township of Westminster) in the City of London, County of Middlesex, designated as Part 10, Plan 33R-21500 being part of PIN 08466-0026

825 Wellington Road:

Part of Lot 24, Concession 1 (Geographic Township of Westminster) being Part of the Forced Road Allowance also known as Wellington Rd (Closed by By-Law S-1015-373, Registered as Inst. No. 236473) in the City of London, County of Middlesex, designated as Part 4, Plan 33R-21504 being part of PIN 08471-0027

835 Wellington Road:

Part of Lot 24, Concession 1 (Geographic Township of Westminster) being Part of the Forced Road Allowance also known as Wellington Rd (Closed by By-Law S-1015-373, Registered as Inst. No. 236473) in the City of London, County of Middlesex, designated as Part 2, Plan 33R-21504 being part of PIN 08471-0028

840 Wellington Road:

Part of Lot 25, Concession 2 (Geographic Township of Westminster) being Part of the Forced Road Allowance also known as Wellington Rd (Closed by By-Law S-643-377, Registered as Inst. No. 170662) in the City of London, County of Middlesex, designated as Part 5, Plan 33R-21504 being part of PIN 08493-0001 and Part of Lot 25, Concession 2 (Geographic Township of Westminster) in the City of London, County of Middlesex, designated as Part 7, Plan 33R-21504 being part of PIN 08493-0002

850-870 Wellington Road:

Part of Lot 25, Concession 2 (Geographic Township of Westminster) in the City of London, County of Middlesex, designated as Parts 9, 10 and 11, Plan 33R-21504 being part of PIN 08493-0003

855 Wellington Road:

Part of Lot 25, Concession 2 (Geographic Township of Westminster) in the City of London, County of Middlesex designated as Parts 2 and 3, Plan 33R-21546 being part of PIN 08494-0344

977 Wellington Road:

Part of Lot 25, Concession 2 (Geographic Township of Westminster) in the City of London, County of Middlesex, designated as Part 6, Plan 33R-21575 being part of PIN 08494-0342

993 Wellington Road:

Part of Lot 25, Concession 2 (Geographic Township of Westminster) in the City of London, County of Middlesex, designated as Part 7, Plan 33R-21575 being part of PIN 08494-0341

1001 Wellington Road:

Part of Lot 25, Concession 2 (Geographic Township of Westminster) in the City of London, County of Middlesex, designated as Parts 1 and 2, Plan 33R-21582 being part of PIN 08494-0340

1005 Wellington Road:

Part of Lot 25, Concession 2 (Geographic Township of Westminster) in the City of London, County of Middlesex, designated as Parts 3 and 8, Plan 33R-21582 being part of PIN 08494-0339

711 St. Stephens Road:

Part of Lot 29, Registered Plan 746 in the City of London, County of Middlesex, designated as Parts 1, 2, 3, 5 and 6, Plan 33R-21533 being part of PIN 08493-0011

712 St. Stephens Road:

Part of Lot 1, Registered Plan 746 in the City of London, County of Middlesex, designated as Parts 1 and 2, Plan 33R-21575 being part of PIN 08493-0259 and Part of Lot 1, Registered Plan 746 in the City of London, County of Middlesex, designated as Parts 3, 4 and 5, Plan 33R-21575 being part of PIN 08493-0260

915 Glenbanner Road:

Part of Lot 30, Registered Plan 746 in the City of London, County of Middlesex, designated as Parts 10 and 11, Plan 33R-21533 being part of PIN 08493-0014

919 Glenbanner Road:

Part of Lot 31, Registered Plan 746 in the City of London, County of Middlesex, designated as Parts 13 and 14, Plan 33R-21533 being part of PIN 08493-0015

921 Glenbanner Road:

Part of Lot 31, Registered Plan 746 in the City of London, County of Middlesex, designated as Parts 16 and 17, Plan 33R-21533 being part of PIN 08493-0016

925 Glenbanner Road:

Part of Lot 32, Registered Plan 746 in the City of London, County of Middlesex, designated as Parts 19 and 20, Plan 33R-21533 being part of PIN 08493-0017

929 Glenbanner Road:

Part of Lot 32, Registered Plan 746 in the City of London, County of Middlesex, designated as Parts 22 and 23, Plan 33R-21533 being part of PIN 08493-0018

937 Glenbanner Road:

Part of Lot 33, Registered Plan 746 in the City of London, County of Middlesex, designated as Parts 25 and 26, Plan 33R-21533 being part of PIN 08493-0019

941 Glenbanner Road:

Part of Lot 33, Registered Plan 746 in the City of London, County of Middlesex, designated as Parts 28 and 29, Plan 33R-21533 being part of PIN 08493-0020

945 Glenbanner Road:

Part of Lot 34, Registered Plan 746 in the City of London, County of Middlesex, designated as Parts 31 and 32, Plan 33R-21533 being part of PIN 08493-0021

951 Glenbanner Road:

Part of Lot 35, Registered Plan 746 in the City of London, County of Middlesex, designated as Parts 34 and 35, Plan 33R-21533 being part of PIN 08493-0022

959 Glenbanner Road:

Part of Lot 36, Registered Plan 746 in the City of London, County of Middlesex, designated as Parts 37 and 39, Plan 33R-21533 being part of PIN 08493-0023

967 Glenbanner Road:

Part of Lot 37, Registered Plan 746 in the City of London, County of Middlesex, designated as Parts 40 and 41, Plan 33R-21533 being part of PIN 08493-0024

973 Glenbanner Road:

Part of Lot 38, Registered Plan 746 in the City of London, County of Middlesex, designated as Parts 43 and 44, Plan 33R-21533 being part of PIN 08493-0025

979 Glenbanner Road:

Part of Lot 39, Registered Plan 746 in the City of London, County of Middlesex, designated as Parts 47 and 48, Plan 33R-21533 being part of PIN 08493-0281

981 Glenbanner Road:

Part of Lot 39, Registered Plan 746 in the City of London, County of Middlesex, designated as Parts 49 and 50, Plan 33R-21533 being part of PIN 08493-0282

985 Glenbanner Road:

Part of Lots 39 and 40, Registered Plan 746 in the City of London, County of Middlesex, designated as Parts 52 and 53, Plan 33R-21533 being part of PIN 08493-0283

987 Glenbanner Road:

Part of Lot 40, Registered Plan 746 in the City of London, County of Middlesex, designated as Parts 55 and 56, Plan 33R-21533 being part of PIN 08493-0284

989 Glenbanner Road:

Part of Lot 40, Registered Plan 746 in the City of London, County of Middlesex, designated as Parts 58 and 59, Plan 33R-21533 being part of PIN 08493-0285

714 Dunelm Lane:

Part of Lot 41, Registered Plan 746 in the City of London, County of Middlesex, designated as Parts 61 and 63, Plan 33R-21533 being part of PIN 08493-0027

1051 Wellington Road:

Part of Lot 25, Concessions 2 (Geographic Township of Westminster) in the City of London, County of Middlesex designated as Part 5, Plan 33R-21582 being part of PIN 08494-0338

1059 Wellington Road:

Part of Lot 25, Concessions 2 (Geographic Township of Westminster) in the City of London, County of Middlesex designated as Parts 6 and 7, Plan 33R-21582 being part of PIN 08494-0337

1060 Wellington Road:

Part of Mitchell Street (Closed by By-Law S-3697-586, Registered as Inst. No. LT357133), Registered Plan 746 in the City of London, County of Middlesex, designated as Parts 1, 2, 3, 4, 5 and 6, Plan 33R-21522 being part of PIN 08493-0278

1070 Wellington Road:

Part of Lot 25, Concessions 2 (Geographic Township of Westminster) in the City of London, County of Middlesex designated as Parts 10 and 13, Plan 33R-21522 being part of PIN 08485-0001

1073 Wellington Road:

Part of Lot 25, Concessions 2 (Geographic Township of Westminster) in the City of London, County of Middlesex designated as Part 1, Plan 33R-21519 being part of PIN 08494-0336

1078 Wellington Road:

Part of Lot 25, Concessions 2 (Geographic Township of Westminster) in the City of London, County of Middlesex designated as Part 9, Plan 33R-21522 being part of PIN 08485-0185

1080 Wellington Road:

Part of Lot 25, Concessions 2 (Geographic Township of Westminster) in the City of London, County of Middlesex designated as Parts 14, 15 and 17, Plan 33R-21522 being part of PIN 08485-0002

1090 Wellington Road:

Part of Lot 25, Concessions 2 (Geographic Township of Westminster) in the City of London, County of Middlesex designated as Part 1, Plan of Survey by Callon Dietz dated March 6, 2023 Plan No. DDD-4157, being part of PIN 08485-0248

1100 Wellington Road:

Part of Lot 25, Concessions 2 (Geographic Township of Westminster) in the City of London, County of Middlesex designated as Parts 1 and 3, Plan 33R-21516 being part of PIN 08485-0249

1105 Wellington Road:

Part of Lot 25, Concessions 2 (Geographic Township of Westminster) in the City of London, County of Middlesex designated as Parts 1, 2, 3, 4, 5, 6 and 7, Plan 33R-21547 being part of PIN 08495-0273

1115 Wellington Road:

Part of Lot 25, Concessions 2 (Geographic Township of Westminster) in the City of London, County of Middlesex designated as Parts 9, 10, 11, 12, 13, 14, 16, 17, 18 and 19 Plan 33R-21547 being part of PIN 08495-0251

1120 Wellington Road:

Part of Lot 25, Concessions 2 (Geographic Township of Westminster) in the City of London, County of Middlesex designated as Parts 4 and 5 Plan 33R-21516 being part of PIN 08485-0004

**APPENDIX "B"**

**To By-law L.S.P.-\_\_\_\_\_**

**EXPROPRIATIONS ACT, R.S.O. 1990, CHAPTER E.26**

**NOTICE OF APPLICATION FOR APPROVAL TO EXPROPRIATE LAND**  
*Expropriations Act*

IN THE MATTER OF an application by The Corporation of the City of London for approval to expropriate lands being for the purpose of the Rapid Transit Wellington Gateway Project.

**NOTICE IS HEREBY GIVEN** that application has been made for approval to expropriate the following lands described as follows:

**Fee Simple:**

615 Wellington Road:

Part of Lot 7, Registered Plan 635 in the City of London, County of Middlesex designated as Part 1, Plan 33R-21500 being part of PIN 08470-0080

647 Wellington Road:

Part of Lots 2 and 3, Registered Plan 635 in the City of London, County of Middlesex, designated as Part 3, Plan 33R-21500 being part of PIN 08466-0024 and Part of Lot 2, Registered Plan 635 in the City of London, County of Middlesex, designated as Part 5, Plan 33R-21500 being part of PIN 08466-0024

655 Wellington Road:

Part of Lots 1 & 2, on Registered Plan 635, in the City of London, County of Middlesex designated as Part 7 on Plan 33R-21500 being part of PIN 08466-0025

663 Wellington Road:

Part of Lot 25, Concession 1 (Geographic Township of Westminster) in the City of London, County of Middlesex, designated as Part 9, Plan 33R-21500 being part of PIN 08466-0026

825 Wellington Road:

Part of Lot 24, Concession 1 (Geographic Township of Westminster) being Part of the Forced Road Allowance also known as Wellington Rd (Closed by By-Law S-1015-373, Registered as Inst. No. 236473) in the City of London, County of Middlesex, designated as Part 3, Plan 33R-21504 being part of PIN 08471-0027

835 Wellington Road:

Part of Lot 24, Concession 1 (Geographic Township of Westminster) being Part of the Forced Road Allowance also known as Wellington Rd (Closed by By-Law S-1015-373, Registered as Inst. No. 236473) in the City of London, County of Middlesex, designated as Part 1, Plan 33R-21504 being part of PIN 08471-0028

840 Wellington Road:

Part of Lot 25, Concession 2 (Geographic Township of Westminster) in the City of London, County of Middlesex, designated as Part 6, Plan 33R-21504 being part of PIN 08493-0002

850-870 Wellington Road:

Part of Lot 25, Concession 2 (Geographic Township of Westminster) in the City of London, County of Middlesex, designated as Part 8, Plan 33R-21504 being part of PIN 08493-0003

1060 Wellington Road:

Part of Mitchell Street (Closed by By-Law S-3697-586, Registered as Inst. No. LT357133), Registered Plan 746 in the City of London, County of Middlesex, designated as Part 7, Plan 33R-21522 being part of PIN 08493-0278

1070 Wellington Road:

Part of Lot 25, Concessions 2 (Geographic Township of Westminster) in the City of London, County of Middlesex designated as Parts 11 and 12, Plan 33R-21522 being part of PIN 08485-0001

1073 Wellington Road:

Part of Lot 25, Concessions 2 (Geographic Township of Westminster) in the City of London, County of Middlesex designated as Part 2, Plan 33R-21519 being part of PIN 08494-0336

1078 Wellington Road:

Part of Lot 25, Concessions 2 (Geographic Township of Westminster) in the City of London, County of Middlesex designated as Part 8, Plan 33R-21522 being part of PIN 08485-0185

1100 Wellington Road:

Part of Lot 25, Concessions 2 (Geographic Township of Westminster) in the City of London, County of Middlesex designated as Part 2, Plan 33R-21516 being part of PIN 08485-0249

1105 Wellington Road:

Part of Lot 25, Concessions 2 (Geographic Township of Westminster) in the City of London, County of Middlesex designated as Parts 20, 21, 22 and 23, Plan 33R-21547 being part of PIN 08495-0273

1115 Wellington Road:

Part of Lot 25, Concessions 2 (Geographic Township of Westminster) in the City of London, County of Middlesex designated as Parts 8 and 15, Plan 33R-21547 being part of PIN 08485-0251

1241 Wellington Road:

Lot 4, Plan 880, Geographic Township of Westminster, in the City of London, County of Middlesex, being all of PIN 08485-0016, Part Block A, RP 653 and Part Lot 24, Concession 2, designated as Part 1 on 33R-11797, Geographic Township of Westminster, in the City of London, County of Middlesex, being all of PIN 08485-0198.

**Limited Interest (Permanent Easement):**

711 St. Stephens Road:

Part of Lot 29, Registered Plan 746 in the City of London, County of Middlesex, designated as Part 4, Plan 33R-21533 being part of PIN 08493-0011

915 Glenbanner Road:

Part of Lot 30, Registered Plan 746 in the City of London, County of Middlesex, designated as Part 12, Plan 33R-21533 being part of PIN 08493-0014

919 Glenbanner Road:

Part of Lot 31, Registered Plan 746 in the City of London, County of Middlesex, designated as Part 15, Plan 33R-21533 being part of PIN 08493-0015

921 Glenbanner Road:

Part of Lot 31, Registered Plan 746 in the City of London, County of Middlesex, designated as Part 18, Plan 33R-21533 being part of PIN 08493-0016



925 Glenbanner Road:

Part of Lot 32, Registered Plan 746 in the City of London, County of Middlesex, designated as Part 21, Plan 33R-21533 being part of PIN 08493-0017

929 Glenbanner Road:

Part of Lot 32, Registered Plan 746 in the City of London, County of Middlesex, designated as Part 24, Plan 33R-21533 being part of PIN 08493-0018

937 Glenbanner Road:

Part of Lot 33, Registered Plan 746 in the City of London, County of Middlesex, designated as Part 27, Plan 33R-21533 being part of PIN 08493-0019

941 Glenbanner Road:

Part of Lot 33, Registered Plan 746 in the City of London, County of Middlesex, designated as Part 30, Plan 33R-21533 being part of PIN 08493-0020

945 Glenbanner Road:

Part of Lot 34, Registered Plan 746 in the City of London, County of Middlesex, designated as Part 33, Plan 33R-21533 being part of PIN 08493-0021

951 Glenbanner Road:

Part of Lot 35, Registered Plan 746 in the City of London, County of Middlesex, designated as Part 36, Plan 33R-21533 being part of PIN 08493-0022

959 Glenbanner Road:

Part of Lot 36, Registered Plan 746 in the City of London, County of Middlesex, designated as Part 38, Plan 33R-21533 being part of PIN 08493-0023

967 Glenbanner Road:

Part of Lot 37, Registered Plan 746 in the City of London, County of Middlesex, designated as Part 42, Plan 33R-21533 being part of PIN 08493-0024

973 Glenbanner Road:

Part of Lot 38, Registered Plan 746 in the City of London, County of Middlesex, designated as Part 45, Plan 33R-21533 being part of PIN 08493-0025

979 Glenbanner Road:

Part of Lot 39, Registered Plan 746 in the City of London, County of Middlesex, designated as Part 46, Plan 33R-21533 being part of PIN 08493-0281

981 Glenbanner Road:

Part of Lot 39, Registered Plan 746 in the City of London, County of Middlesex, designated as Part 51, Plan 33R-21533 being part of PIN 08493-0282

985 Glenbanner Road:

Part of Lot 40, Registered Plan 746 in the City of London, County of Middlesex, designated as Part 54, Plan 33R-21533 being part of PIN 08493-0283

987 Glenbanner Road:

Part of Lot 40, Registered Plan 746 in the City of London, County of Middlesex, designated as Part 57, Plan 33R-21533 being part of PIN 08493-0284

989 Glenbanner Road:

Part of Lot 40, Registered Plan 746 in the City of London, County of Middlesex, designated as Part 60, Plan 33R-21533 being part of PIN 08493-0285

714 Dunelm Lane:

Part of Lot 41, Registered Plan 746 in the City of London, County of Middlesex, designated as Part 62, Plan 33R-21533 being part of PIN 08493-0027

1080 Wellington Road:

Part of Lot 25, Concessions 2 (Geographic Township of Westminster) in the City of London, County of Middlesex designated as Parts 15 and 16, Plan 33R-21522 being part of PIN 08485-0002

1105 Wellington Road:

Part of Lot 25, Concessions 2 (Geographic Township of Westminster) in the City of London, County of Middlesex designated as Parts 2, 4 and 5 , Plan 33R-21547 being part of PIN 08495-0273

1120 Wellington Road:

Part of Lot 25, Concessions 2 (Geographic Township of Westminster) in the City of London, County of Middlesex designated as Part 5 Plan 33R-21516 being part of PIN 08485-0004

**Limited Interest (Temporary Easement):**

615 Wellington Road:

Part of Lot 7, Registered Plan 635 in the City of London, County of Middlesex designated as Part 2, Plan 33R-21500 being part of PIN 08470-0080

647 Wellington Road:

Part of Lots 2 and 3, Registered Plan 635 in the City of London, County of Middlesex, designated as Part 4, Plan 33R-21500 being part of PIN 08466-0024 and Part of Lot 2, Registered Plan 635 in the City of London, County of Middlesex, designated as Part 6, Plan 33R-21500 being part of PIN 08466-0024

655 Wellington Road:

Part of Lots 1 & 2, on Registered Plan 635, in the City of London, County of Middlesex designated as Part 8 on Plan 33R-21500 being part of PIN 08466-0025

663 Wellington Road:

Part of Lot 25, Concession 1 (Geographic Township of Westminster) in the City of London, County of Middlesex, designated as Part 10, Plan 33R-21500 being part of PIN 08466-0026

825 Wellington Road:

Part of Lot 24, Concession 1 (Geographic Township of Westminster) being Part of the Forced Road Allowance also known as Wellington Rd (Closed by By-Law S-1015-373, Registered as Inst. No. 236473) in the City of London, County of Middlesex, designated as Part 4, Plan 33R-21504 being part of PIN 08471-0027

835 Wellington Road:

Part of Lot 24, Concession 1 (Geographic Township of Westminster) being Part of the Forced Road Allowance also known as Wellington Rd (Closed by By-Law S-1015-373, Registered as Inst. No. 236473) in the City of London, County of Middlesex, designated as Part 2, Plan 33R-21504 being part of PIN 08471-0028

840 Wellington Road:

Part of Lot 25, Concession 2 (Geographic Township of Westminster) being Part of the Forced Road Allowance also known as Wellington Rd (Closed by By-Law S-643-377, Registered as Inst. No. 170662) in the City of London, County of Middlesex, designated as Part 5, Plan 33R-21504 being part of PIN 08493-0001 and Part of Lot 25, Concession 2 (Geographic Township of Westminster) in the City of London, County of Middlesex, designated as Part 7, Plan 33R-21504 being part of PIN 08493-0002

850-870 Wellington Road:

Part of Lot 25, Concession 2 (Geographic Township of Westminster) in the City of London, County of Middlesex, designated as Parts 9, 10 and 11, Plan 33R-21504 being part of PIN 08493-0003

855 Wellington Road:

Part of Lot 25, Concession 2 (Geographic Township of Westminster) in the City of London, County of Middlesex designated as Parts 2 and 3, Plan 33R-21546 being part of PIN 08494-0344

977 Wellington Road:

Part of Lot 25, Concession 2 (Geographic Township of Westminster) in the City of London, County of Middlesex, designated as Part 6, Plan 33R-21575 being part of PIN 08494-0342

993 Wellington Road:

Part of Lot 25, Concession 2 (Geographic Township of Westminster) in the City of London, County of Middlesex, designated as Part 7, Plan 33R-21575 being part of PIN 08494-0341

1001 Wellington Road:

Part of Lot 25, Concession 2 (Geographic Township of Westminster) in the City of London, County of Middlesex, designated as Parts 1 and 2, Plan 33R-21582 being part of PIN 08494-0340

1005 Wellington Road:

Part of Lot 25, Concession 2 (Geographic Township of Westminster) in the City of London, County of Middlesex, designated as Parts 3 and 8, Plan 33R-21582 being part of PIN 08494-0339

711 St. Stephens Road:

Part of Lot 29, Registered Plan 746 in the City of London, County of Middlesex, designated as Parts 1, 2, 3, 5 and 6, Plan 33R-21533 being part of PIN 08493-0011

712 St. Stephens Road:

Part of Lot 1, Registered Plan 746 in the City of London, County of Middlesex, designated as Parts 1 and 2, Plan 33R-21575 being part of PIN 08493-0259 and Part of Lot 1, Registered Plan 746 in the City of London, County of Middlesex, designated as Parts 3, 4 and 5, Plan 33R-21575 being part of PIN 08493-0260

915 Glenbanner Road:

Part of Lot 30, Registered Plan 746 in the City of London, County of Middlesex, designated as Parts 10 and 11, Plan 33R-21533 being part of PIN 08493-0014

919 Glenbanner Road:

Part of Lot 31, Registered Plan 746 in the City of London, County of Middlesex, designated as Parts 13 and 14, Plan 33R-21533 being part of PIN 08493-0015

921 Glenbanner Road:

Part of Lot 31, Registered Plan 746 in the City of London, County of Middlesex, designated as Parts 16 and 17, Plan 33R-21533 being part of PIN 08493-0016

925 Glenbanner Road:

Part of Lot 32, Registered Plan 746 in the City of London, County of Middlesex, designated as Parts 19 and 20, Plan 33R-21533 being part of PIN 08493-0017

929 Glenbanner Road:

Part of Lot 32, Registered Plan 746 in the City of London, County of Middlesex, designated as Parts 22 and 23, Plan 33R-21533 being part of PIN 08493-0018

937 Glenbanner Road:

Part of Lot 33, Registered Plan 746 in the City of London, County of Middlesex, designated as Parts 25 and 26, Plan 33R-21533 being part of PIN 08493-0019

941 Glenbanner Road:

Part of Lot 33, Registered Plan 746 in the City of London, County of Middlesex, designated as Parts 28 and 29, Plan 33R-21533 being part of PIN 08493-0020

945 Glenbanner Road:

Part of Lot 34, Registered Plan 746 in the City of London, County of Middlesex, designated as Parts 31 and 32, Plan 33R-21533 being part of PIN 08493-0021

951 Glenbanner Road:

Part of Lot 35, Registered Plan 746 in the City of London, County of Middlesex, designated as Parts 34 and 35, Plan 33R-21533 being part of PIN 08493-0022

959 Glenbanner Road:

Part of Lot 36, Registered Plan 746 in the City of London, County of Middlesex, designated as Parts 37 and 39, Plan 33R-21533 being part of PIN 08493-0023

967 Glenbanner Road:

Part of Lot 37, Registered Plan 746 in the City of London, County of Middlesex, designated as Parts 40 and 41, Plan 33R-21533 being part of PIN 08493-0024

973 Glenbanner Road:

Part of Lot 38, Registered Plan 746 in the City of London, County of Middlesex, designated as Parts 43 and 44, Plan 33R-21533 being part of PIN 08493-0025

979 Glenbanner Road:

Part of Lot 39, Registered Plan 746 in the City of London, County of Middlesex, designated as Parts 47 and 48, Plan 33R-21533 being part of PIN 08493-0281

981 Glenbanner Road:

Part of Lot 39, Registered Plan 746 in the City of London, County of Middlesex, designated as Parts 49 and 50, Plan 33R-21533 being part of PIN 08493-0282

985 Glenbanner Road:

Part of Lots 39 and 40, Registered Plan 746 in the City of London, County of Middlesex, designated as Parts 52 and 53, Plan 33R-21533 being part of PIN 08493-0283

987 Glenbanner Road:

Part of Lot 40, Registered Plan 746 in the City of London, County of Middlesex, designated as Parts 55 and 56, Plan 33R-21533 being part of PIN 08493-0284

989 Glenbanner Road:

Part of Lot 40, Registered Plan 746 in the City of London, County of Middlesex, designated as Parts 58 and 59, Plan 33R-21533 being part of PIN 08493-0285

714 Dunelm Lane:

Part of Lot 41, Registered Plan 746 in the City of London, County of Middlesex, designated as Parts 61 and 63, Plan 33R-21533 being part of PIN 08493-0027

1051 Wellington Road:

Part of Lot 25, Concessions 2 (Geographic Township of Westminster) in the City of London, County of Middlesex designated as Part 5, Plan 33R-21582 being part of PIN 08494-0338

1059 Wellington Road:

Part of Lot 25, Concessions 2 (Geographic Township of Westminster) in the City of London, County of Middlesex designated as Parts 6 and 7, Plan 33R-21582 being part of PIN 08494-0337

1060 Wellington Road:

Part of Mitchell Street (Closed by By-Law S-3697-586, Registered as Inst. No. LT357133), Registered Plan 746 in the City of London, County of Middlesex, designated as Parts 1, 2, 3, 4, 5 and 6, Plan 33R-21522 being part of PIN 08493-0278

1070 Wellington Road:

Part of Lot 25, Concessions 2 (Geographic Township of Westminster) in the City of London, County of Middlesex designated as Parts 10 and 13, Plan 33R-21522 being part of PIN 08485-0001

1073 Wellington Road:

Part of Lot 25, Concessions 2 (Geographic Township of Westminster) in the City of London, County of Middlesex designated as Part 1, Plan 33R-21519 being part of PIN 08494-0336

1078 Wellington Road:

Part of Lot 25, Concessions 2 (Geographic Township of Westminster) in the City of London, County of Middlesex designated as Part 9, Plan 33R-21522 being part of PIN 08485-0185

1080 Wellington Road:

Part of Lot 25, Concessions 2 (Geographic Township of Westminster) in the City of London, County of Middlesex designated as Parts 14, 15 and 17, Plan 33R-21522 being part of PIN 08485-0002

1090 Wellington Road:

Part of Lot 25, Concessions 2 (Geographic Township of Westminster) in the City of London, County of Middlesex designated as Part 1, Plan of Survey by Callon Dietz dated March 6, 2023 Plan No. DDD-4157, being part of PIN 08485-0248

1100 Wellington Road:

Part of Lot 25, Concessions 2 (Geographic Township of Westminster) in the City of London, County of Middlesex designated as Parts 1 and 3, Plan 33R-21516 being part of PIN 08485-0249

1105 Wellington Road:

Part of Lot 25, Concessions 2 (Geographic Township of Westminster) in the City of London, County of Middlesex designated as Parts 1, 2, 3, 4, 5, 6 and 7, Plan 33R-21547 being part of PIN 08495-0273

1115 Wellington Road:

Part of Lot 25, Concessions 2 (Geographic Township of Westminster) in the City of London, County of Middlesex designated as Parts 9, 10, 11, 12, 13, 14, 16, 17, 18 and 19 Plan 33R-21547 being part of PIN 08495-0251

1120 Wellington Road:

Part of Lot 25, Concessions 2 (Geographic Township of Westminster) in the City of London, County of Middlesex designated as Part 4 and 5 Plan 33R-21516 being part of PIN 08485-0004

Any owner of land in respect of which notice is given who desires a hearing into whether the taking of such land is fair, sound and reasonably necessary in the achievement of the objectives of the expropriating authority shall so notify the approving authority in writing,

- a) in the case of a registered owner, served personally or by registered mail within thirty days after the registered owner is served with the notice, or, when the registered owner is served by publication, within thirty days after the first publication of the notice;

- b) in the case of an owner who is not a registered owner, within thirty days after the first publication of the notice.

The approving authority is:

The Council of The Corporation of the City of London  
City Hall  
300 Dufferin Avenue  
P.O. Box 5035  
London ON N6A 4L9

The expropriating authority is:

THE CORPORATION OF THE CITY OF LONDON

---

MICHAEL SCHULTHESS  
CITY CLERK

Notes:

1. The *Expropriations Act, R.S.O. 1990, c. E.26*, provides that:
  - (a) where a hearing is requested, it shall be conducted by a single member of the Ontario Land Tribunal;
  - (b) Subject to the regulations, the Tribunal may recommend to the approving authority that a party to the hearing be paid a fixed amount for the party's costs of the hearing, and the approving authority may in its discretion order the expropriating authority to pay the recommended costs.
2. "Owner" and "Registered Owner" are defined in the *Act* as follows:

"Owner" includes a mortgagee, tenant, execution creditor, a person entitled to a limited estate or interest in land, a guardian of property, and a guardian, executor, administrator or trustee in whom land is vested;

"Registered Owner" means an owner of land whose interest in the land is defined and whose name is specified in an instrument in the proper land registry or sheriff's office, and includes a person shown as a tenant of land on the last revised assessment roll;
3. The Expropriating Authority, each owner who notifies the approving authority that he desires a hearing in respect of the lands intended to be expropriated and any owner added as a party by the Tribunal are parties to the hearing.

This notice first published on the \_\_\_\_\_ day of \_\_\_\_\_, 2023.