

# 955 COMMISSIONERS ROAD E.

## PROJECT SUMMARY

www.siv-ik.ca/955ce | **Developer:** 2833257 Ontario Inc. (c/o Royal Premier Developments)



## Concept At-A-Glance

### USE

**188**

RESIDENTIAL UNITS

### PARKING

**188**

VEHICLE SPACES  
(168 STRUCTURED SPACES  
AND 20 SURFACE SPACES)

### HEIGHT



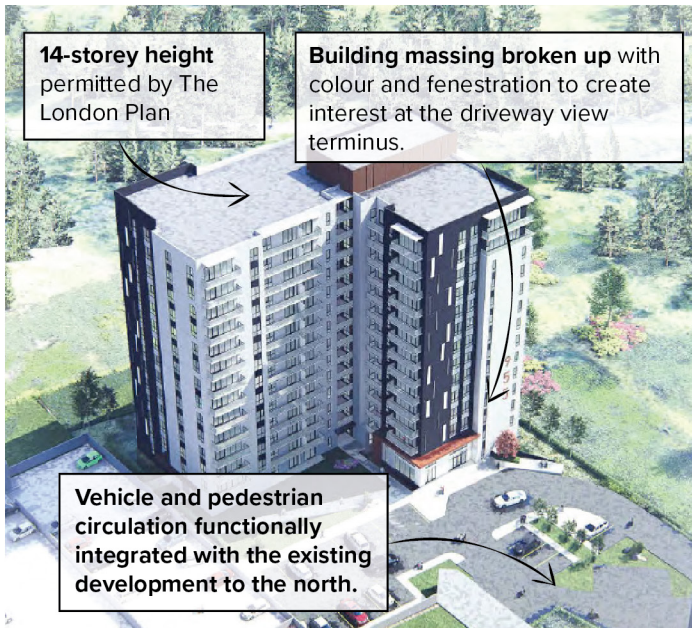
**14**  
STOREYS  
(46.0m)

### DENSITY

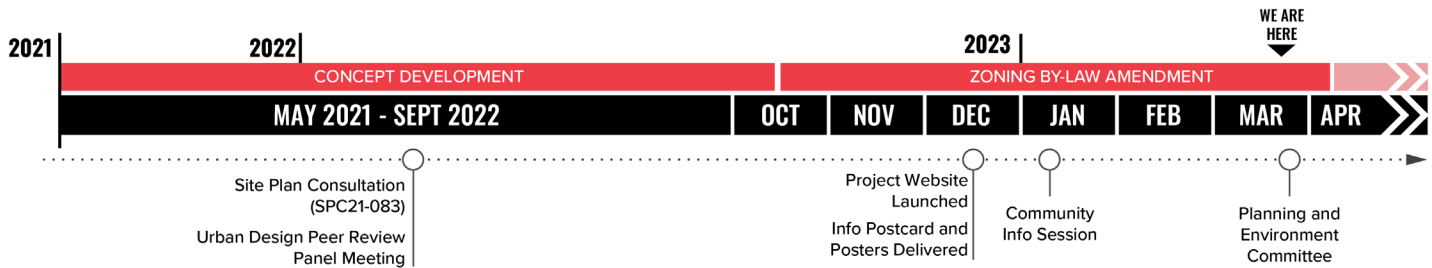


**265**  
UNITS PER  
HECTARE

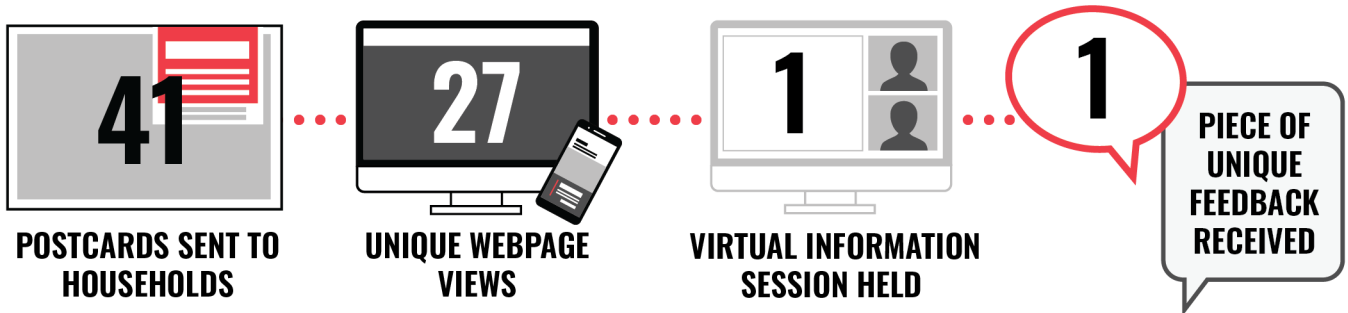
# Key Features



# Timeline



# Community Engagement by the Numbers



\*Includes feedback received from the Siv-ik project website feedback form, Virtual Community Information Meeting #1, and emails to info@siv-ik.ca. The count does not include any feedback sent directly to the City.