



London
CANADA

Foxfield Spray Pad

Presentation to the Accessibility Community
Advisory Committee, March 23, 2023

london.ca



Spray Pads and AODA

- Spray pads meet the definition of **Outdoor Play Space** under AODA;
- Designated public sector organizations must consult with the public and persons with disabilities, as well as their municipal accessibility advisory committee;
- Design must incorporate accessibility features, such as sensory and active play components, for children and caregivers with various disabilities;
- Design must have a ground surface that is firm, stable and provide the ability to move through, in and around the space.



Project Background

This project is part of the enhancement of **Foxfield District Park**, located at 2384 Buroak Drive:

- 2010-11: a park master plan was completed following public engagement with area residents;
- 2012: the eastern half of the park was developed, with sports courts, a playground, parking lot, pathways, and lighting. At that time, the west portion of the park was reserved for a stormwater management facility;
- 2023: this facility is no longer needed, allowing the west side of Foxfield District Park to be implemented. This is possible thanks to financial support from the provincial government under the Strategic Priorities Infrastructure Fund, Sport and Community Renewal sub-stream (SPIF-SCR).



Foxfield District Park Location Map - 2384 Buroak Dr





Proposed Improvements

- ✓ Spray pad and accessible washrooms
- ✓ Rubber safety surfacing at playground
- ✓ Soccer field with accessible spectator area
- ✓ Two more pickle-ball courts, in addition to tennis and basketball
- ✓ Pathway and parking lot improvements
- ✓ Additional lighting
- ✓ Shade structure, site furniture and more trees



PICKLEBALL COURTS



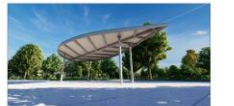
NATURE-THEMED SPRAY PAD



BASKETBALL COURT



COVERED PLAYERS BENCH



RUBBERIZED PLAY SURFACE



SHADE STRUCTURE WITH PICNIC TABLES



CONCRETE SEAT WALL & STAMPS



PICNIC TABLE



FOXFIELD DISTRICT PARK DEVELOPMENT PHASE 2

LEGEND

1. RELOCATED BASKETBALL COURT
2. PROPOSED PICKLEBALL COURTS (2)
3. EXISTING PICKLEBALL COURTS (2)
4. COURT FENCE WITH WIND SCREEN
5. EXISTING TENNIS COURTS (2)
6. PICNIC TABLES
7. BENCHES
8. REALIGNED ASPHALT PATHWAY
9. FIELD HOUSE WITH POSSIBLE FUTURE EXPANSION
10. SEAT WALL
11. SPRAY PAD
12. SEATING AREA WITH BICYCLE PARKING
13. CONCRETE PATHWAY CONNECTION
14. SHADE STRUCTURE WITH PICNIC TABLES
15. NEW RUBBERIZED PLAYGROUND SURFACE
16. NATURAL TURF SOCCER PITCH WITH LIGHTS
17. COVERED PLAYERS BENCHES
18. SPECTATOR AREA
19. NATURALIZED PLANTING
20. FUTURE PATHWAY CONNECTION
21. IMPROVED PARKING LOT
22. POSSIBLE FUTURE PARKING LOT EXPANSION
23. EXISTING PARK ENTRY FEATURE
24. PLAZA WITH SEATING
25. PATHWAY LIGHTING

Lights to be turned off by 11pm

Please note: this is a conceptual design.
Final locations may vary.

CONTACT INFORMATION

Megan Rex, Project Coordinator
519-661-2489 ext. 4257
mrex@london.ca



LONDON
CANADA



Spray Pad

- ✓ 21 sprays (ground and features) and 2 activators on posts
- ✓ Various levels of challenges for water play
- ✓ Concrete surface with 3m wide concrete pathway surround
- ✓ Nearby proposed shade structure
- ✓ Pathway to the existing playground
- ✓ Pathway to the proposed washroom building



Foxfield Park – Concept 1

Rendering of proposed spray pad



Foxfield Park – Concept 1

Copyright 2022 Waterplay Solutions Corp. Artist's visual interpretation of the project. Cannot be considered factual representation of the final product.

Rendering of proposed spray pad



Lorem Ipsum

WATERPLAY
BY MAAK

Foxfield Park - Concept 1

Copyright 2022 Waterplay Solutions Corp. Artist's visual interpretation of the project. Cannot be considered factual representation of the final product.

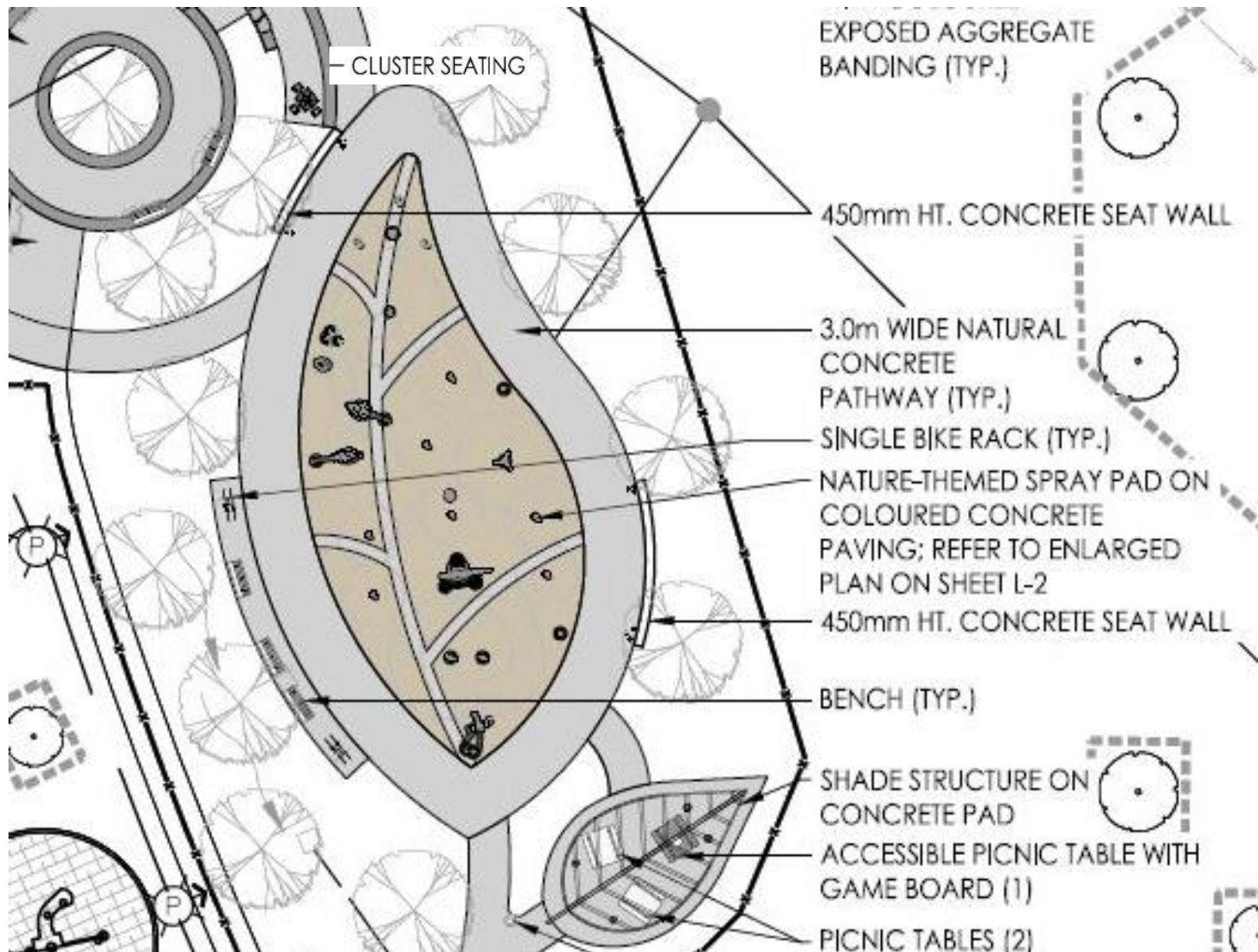
Rendering of proposed spray pad

Site Furniture at Spray Pad

- Shade structure
- 2 picnic tables
- 1 accessible picnic table
- 2 concrete seat walls
- 3 benches with arms
- 2 single bike racks
- 1 accessible cluster seating



Example of concrete seat wall





Rendering of proposed shade structure

200 SERIES

MTB-0210-00040

Legacy #MLPT210-S-W



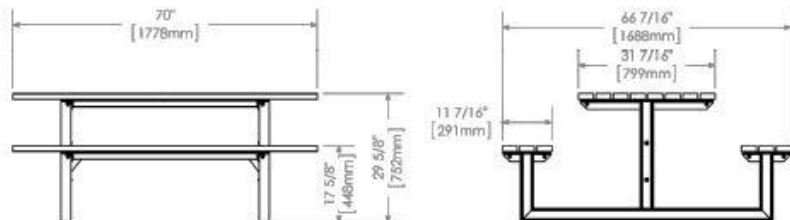
MATERIALS: Table frame is made from 3" x 2-3/8" structural I-Beam with mitered corners. Horizontal support beams are used for superior stability and structural integrity. Surface material is Ipe hardwood.

FINISH: All steel components are protected with E-Coat rust proofing. The Maglin Powdercoat System provides a durable finish on all metal surfaces.

INSTALLATION: The 200 Series Cluster Seating surface mount tables are delivered pre-assembled.

TO SPECIFY: Select MTB-0210-00040
Choose:
- Powdercoat Color

TABLE HEIGHT: 29.75" (75.6cm) SEAT HEIGHT: 17.5"(44.5cm) LENGTH: 66.4" (169cm) WEIGHT: 377lbs (171kg)



T 800 718 5508
F 877 200 5363
www.maglin.com
sales@maglin.com

- All drawings, specifications, design and details on this page remain the property of Maglin Site Furniture Inc. and may not be used without Maglin authorization.
- Details and specifications may vary due to continuing improvements of our products.

NOTES:

1. SHOP DRAWINGS TO BE SUBMITTED FOR APPROVAL PRIOR TO ORDERING.
2. POWDERCOAT COLOUR TO BE BLACK GLOSS.

london.ca

200 SERIES

MTB-0210-00043

Legacy #MLPT210-S-W-WCA-GB



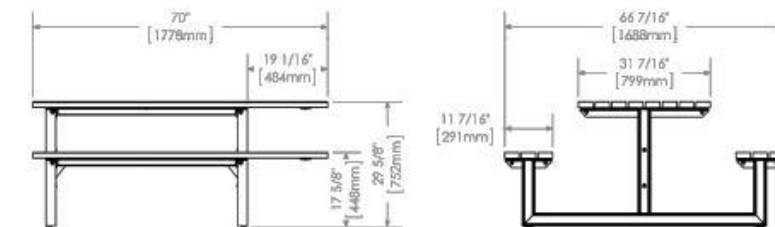
DESCRIPTION: 200 Series - 210 Cluster Seating: Structural I-Beam Frame, Ipe Wood Table Top and Attached Backless Benches (2), Surface Mount, Wheelchair Accessible, Game Board

FINISH: All steel components are protected with E-Coat rust proofing. The Maglin Powdercoat System provides a durable finish on all metal surfaces.

INSTALLATION: The table is delivered pre-assembled. Holes (0.5") are provided for securing to base.

TO SPECIFY: Select MTB-0210-00043
Choose:
- Powdercoat Color

HEIGHT: 29.63" (75.2cm) LENGTH: 70" (177.8cm) WIDTH: 66.4"(168.8cm) WEIGHT: 386.63lbs (175.37kg)



T 800 718 5508
F 877 200 5363
www.maglin.com
sales@maglin.com

- All drawings, specifications, design and details on this page remain the property of Maglin Site Furniture Inc. and may not be used without Maglin authorization.
- Details and specifications may vary due to continuing improvements of our products.

NOTES:

1. SHOP DRAWINGS TO BE SUBMITTED FOR APPROVAL PRIOR TO ORDERING.
2. POWDERCOAT COLOUR TO BE BLACK GLOSS.

Proposed picnic tables

MBE-0870-00025

Legacy # MLB870-W

800 SERIES



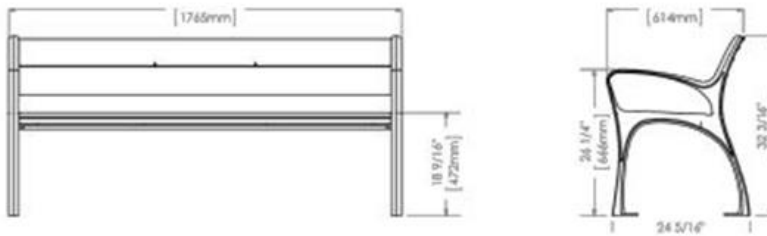
MATERIALS: Bench ends are made from solid cast aluminum. The seat employs Ipe wood slats.

FINISH: All steel components are protected with E-Coat rust proofing. The Maglin Powdercoat System provides a durable finish on all metal surfaces.

INSTALLATION: The bench is delivered pre-assembled. Holes (0.5") are provided in each foot for securing to base.

TO SPECIFY: Select MBE-0870-00025
Choose:
- Powdercoat Color

HEIGHT: 32.2" (81.7cm) LENGTH: 69.5" (176.5cm) DEPTH: 24.2" (61.4cm) WEIGHT: 125.62lbs (55.9kg)



MAGLIN
Site Furniture

T 800 716 9306
F 877 283 9393
www.maglin.com
sales@maglin.com

All drawings, specifications, design and details on this page remain the property of Maglin Site Furniture Inc. and may not be used without Maglin's authorization.
Detail and specifications may vary due to continuing improvements of our products.

NOTES:

1. SHOP DRAWINGS TO BE SUBMITTED FOR APPROVAL PRIOR TO ORDERING.
2. POWDERCOAT COLOUR TO BE BLACK GLOSS, SLATS TO BE IPE WOOD.

MTB-1100-00014

Legacy # MLPT1100B-W-WCA

1100 SERIES



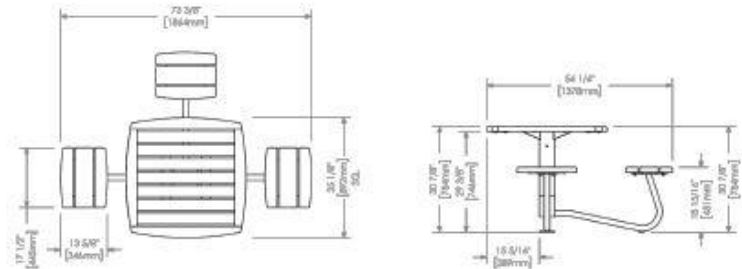
MATERIALS: Table top and Seats are manufactured using Ipe wood slats. The frame is HSS steel tube and is available as surface mount only.

FINISH: The Maglin Powdercoat System provides a durable finish on all metal surfaces. Wood Slats are treated with penetrating sealers.

INSTALLATION: The table is delivered pre-assembled. The legs have 1/2" holes for anchoring.

TO SPECIFY: Select MTB-1100-00014
Choose: Powdercoat Color

HEIGHT: 30 7/8" (784.2mm) LENGTH: 73 3/8" (1863.7mm) DEPTH: 54 1/4" (1377.9mm) WEIGHT: 178.58lbs (81kg)



MAGLIN
Site Furniture

T 800 716 9306
F 877 283 9393
www.maglin.com
sales@maglin.com

All drawings, specifications, design and details on this page remain the property of Maglin Site Furniture Inc. and may not be used without Maglin's authorization.
Details and specifications may vary due to continuing improvements of our products.

REV-01

SCALE (A) 1:32

NOTES:

1. SHOP DRAWINGS TO BE SUBMITTED FOR APPROVAL PRIOR TO ORDERING.
2. POWDERCOAT COLOUR TO BE BLACK GLOSS.

BENCH DETAIL

N.T.S.

Proposed bench and cluster seating

LD2

7



Share Your Feedback

We are inviting feedback from residents about accessibility and their specific needs regarding:

- recreational trails
- outdoor play spaces (spray pad)
- rest areas along exterior path of travels

For more information, please visit GetInvolved.London.ca