



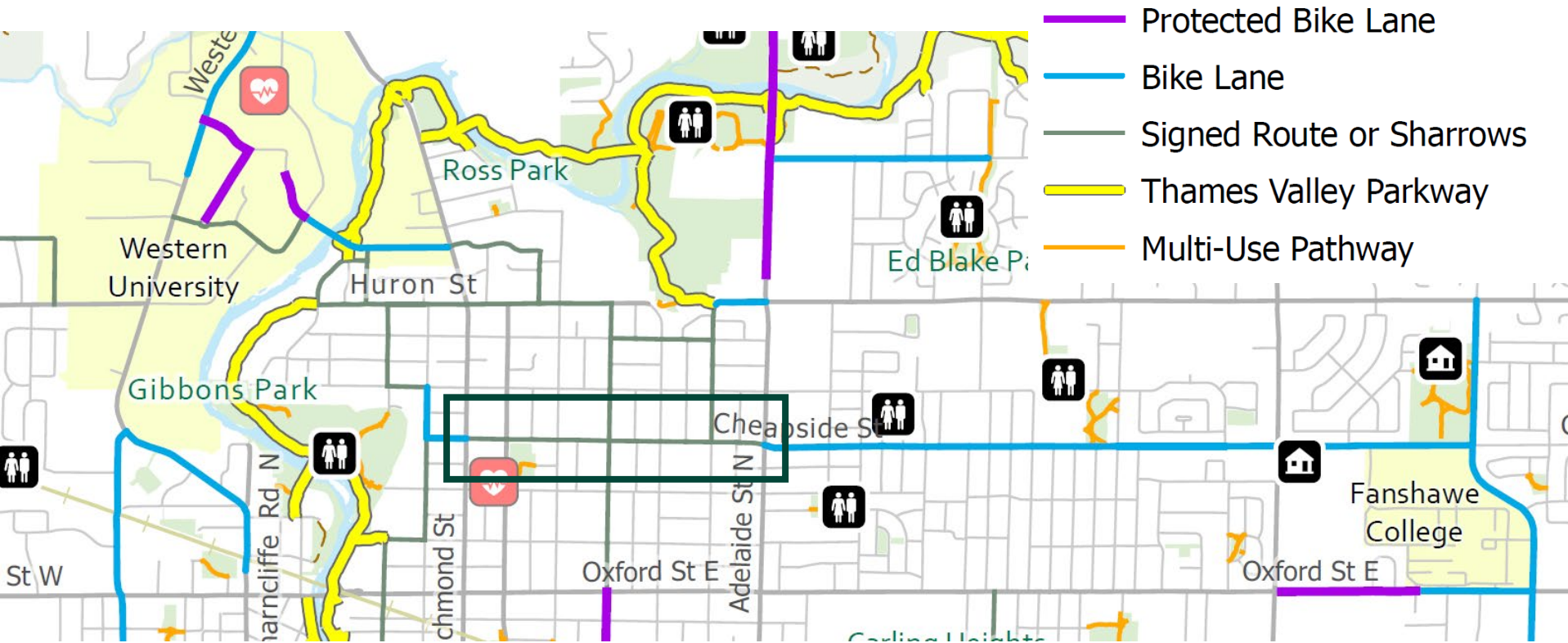
Cheapside Street Bike Lanes

Integrated Transportation Community Advisory
Committee

london.ca

February 15, 2023

Project limits



Cheapside Street between Richmond and Adelaide Streets

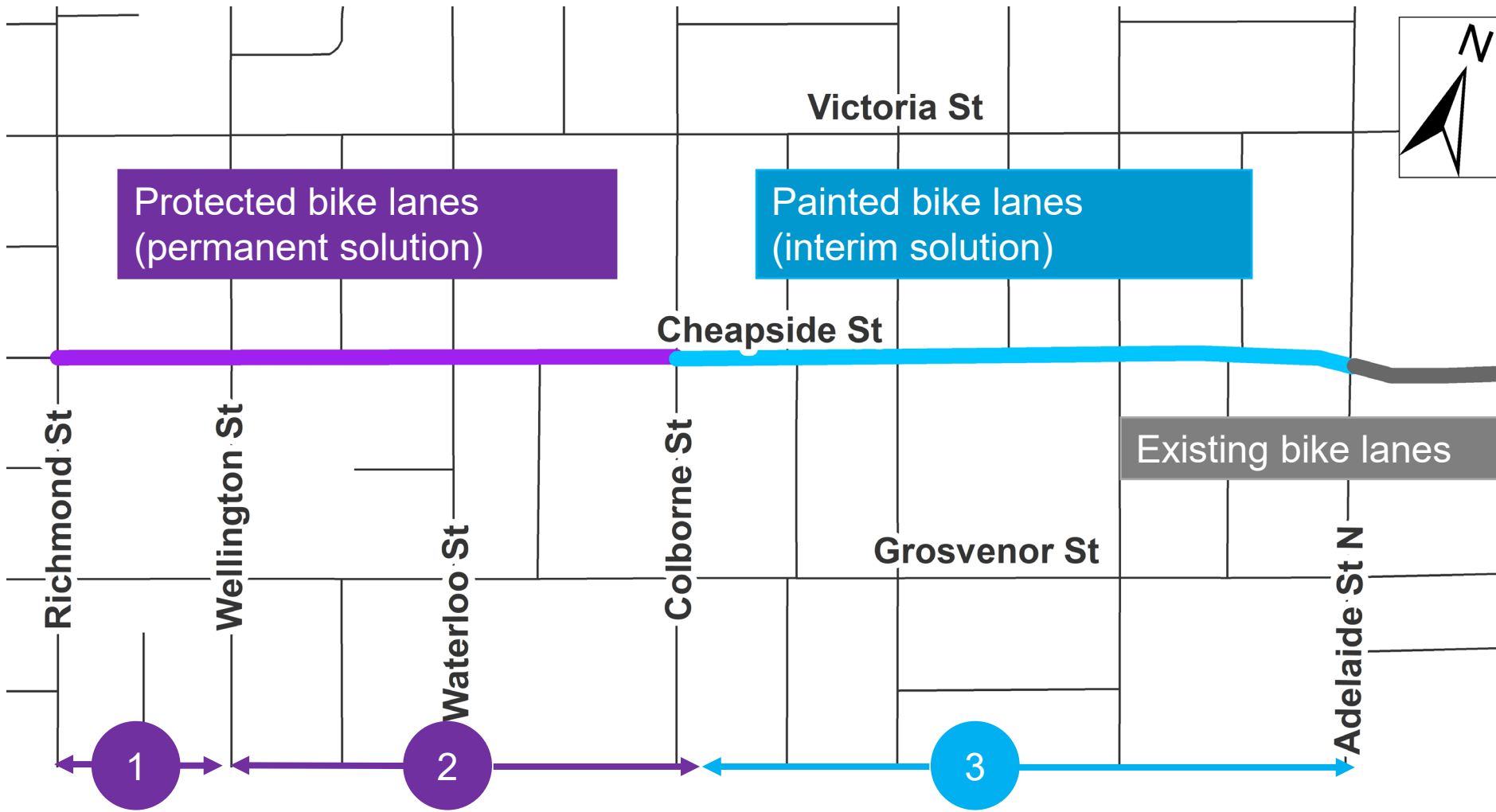


Why add cycling improvements on Cheapside Street?

- Cheapside Street is a “Neighbourhood Connector” intended to include a high-quality pedestrian realm, strong multi-modal connectivity, and managed motor vehicle speeds and volumes
- Currently Cheapside Street is a signed bike route, accommodates two bus routes, has a 3-lane road cross-section and setback sidewalks
- The Cycling Master Plan identified Cheapside Street as a short-term priority project.
- The existing cycling demand (50-100 cyclists per day), and high volume of motor vehicles using Cheapside Street (6,000 – 13,000 vehicles per day) warrants higher order cycling infrastructure to improve safety.

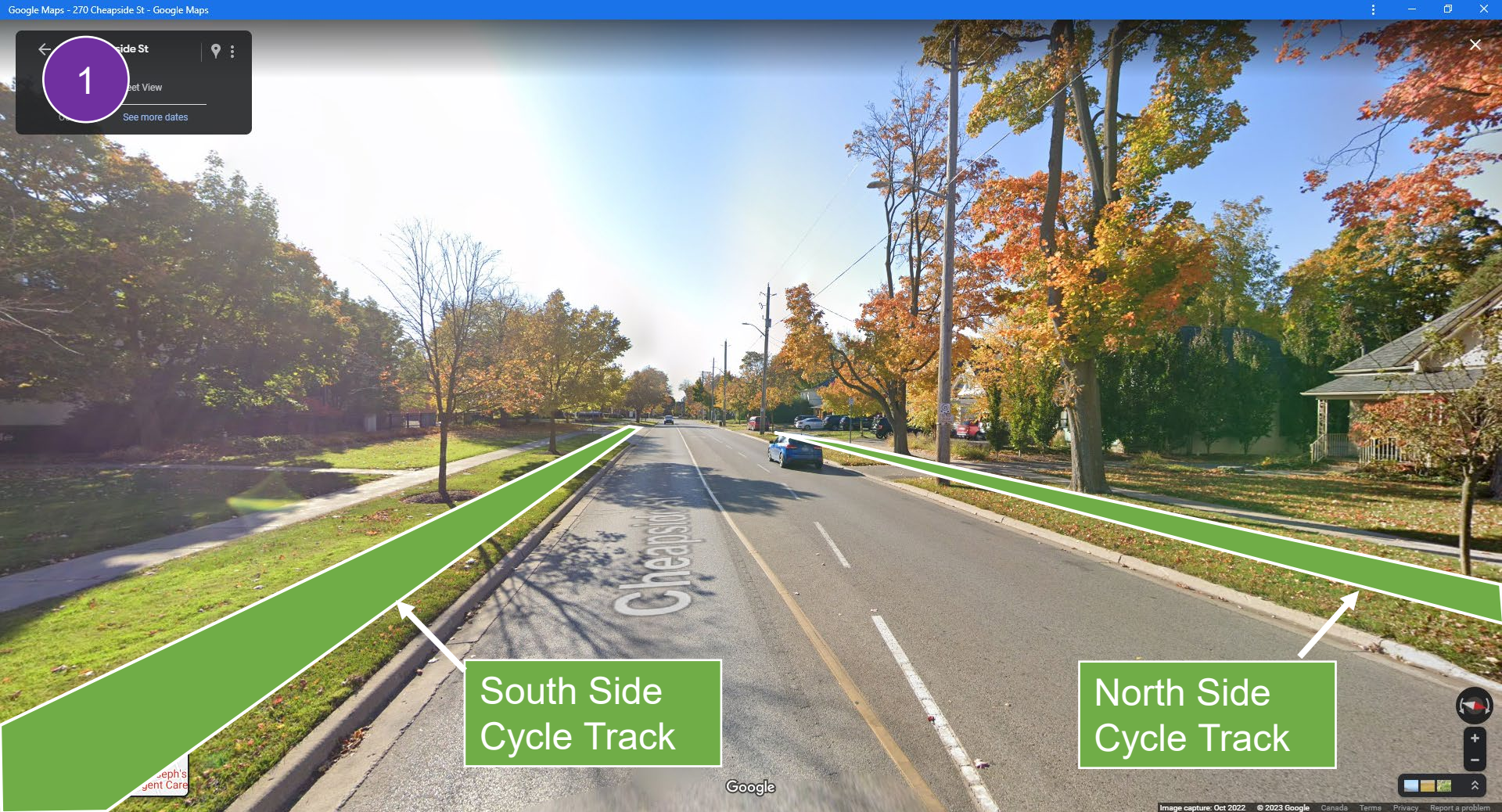


Proposed cycling facilities





Segment 1 cross-section Richmond St to Wellington St



Google Maps - 270 Cheapside St - Google Maps

← Cheapside St

1

Street View

See more dates

South Side
Cycle Track

North Side
Cycle Track

Google



Segment 1 impacts – Richmond St to Wellington St

- Adds all ages and abilities cycling facilities on both sides
- Maintains vehicle capacity, including turn lanes
- Significant tree impacts on north side (approx. 12 trees); minor tree impacts on south side (approx. 3 trees)
- No on-street parking impacts



Segment 2 cross-section Wellington St to Colborne St

Google Maps - 299 Cheapside St - Google Maps



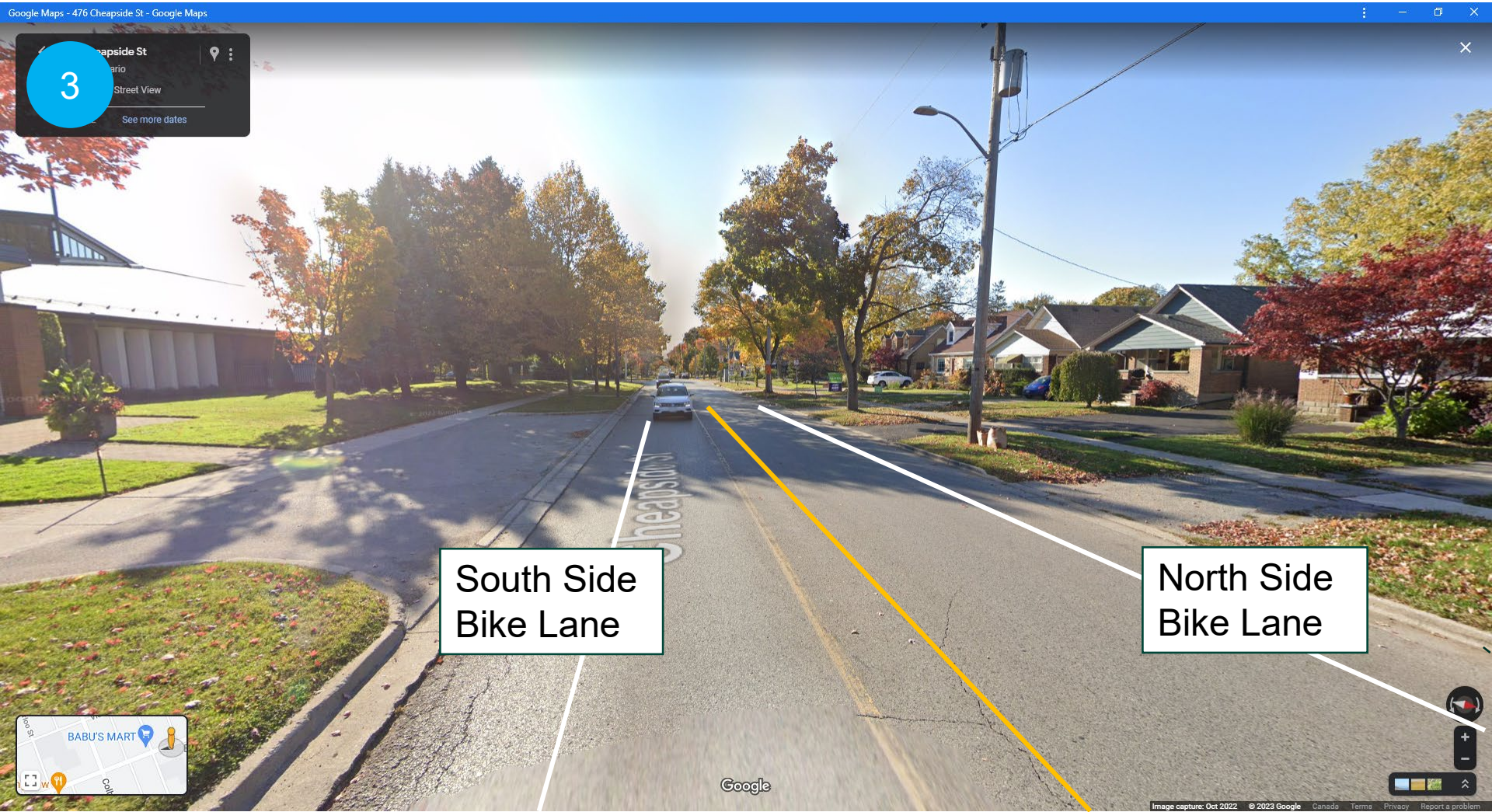


Segment 2 impacts – Wellington to Colborne Street

- Adds all ages and abilities cycling facilities on both sides
- Maintains vehicle lanes, removes left turn lanes at Waterloo Street
- Significant tree impacts on north side (approx. 16 trees); few tree impacts on south side (approx. 3 near Colborne St.)
- On-street parking impacts (approx. 9 spaces)



Segment 3 cross-section Colborne St to Adelaide St

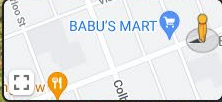


Google Maps - 476 Cheapside St - Google Maps

3 Cheapside St
Toronto, Ontario
Street View
See more dates

South Side
Bike Lane

North Side
Bike Lane



Google



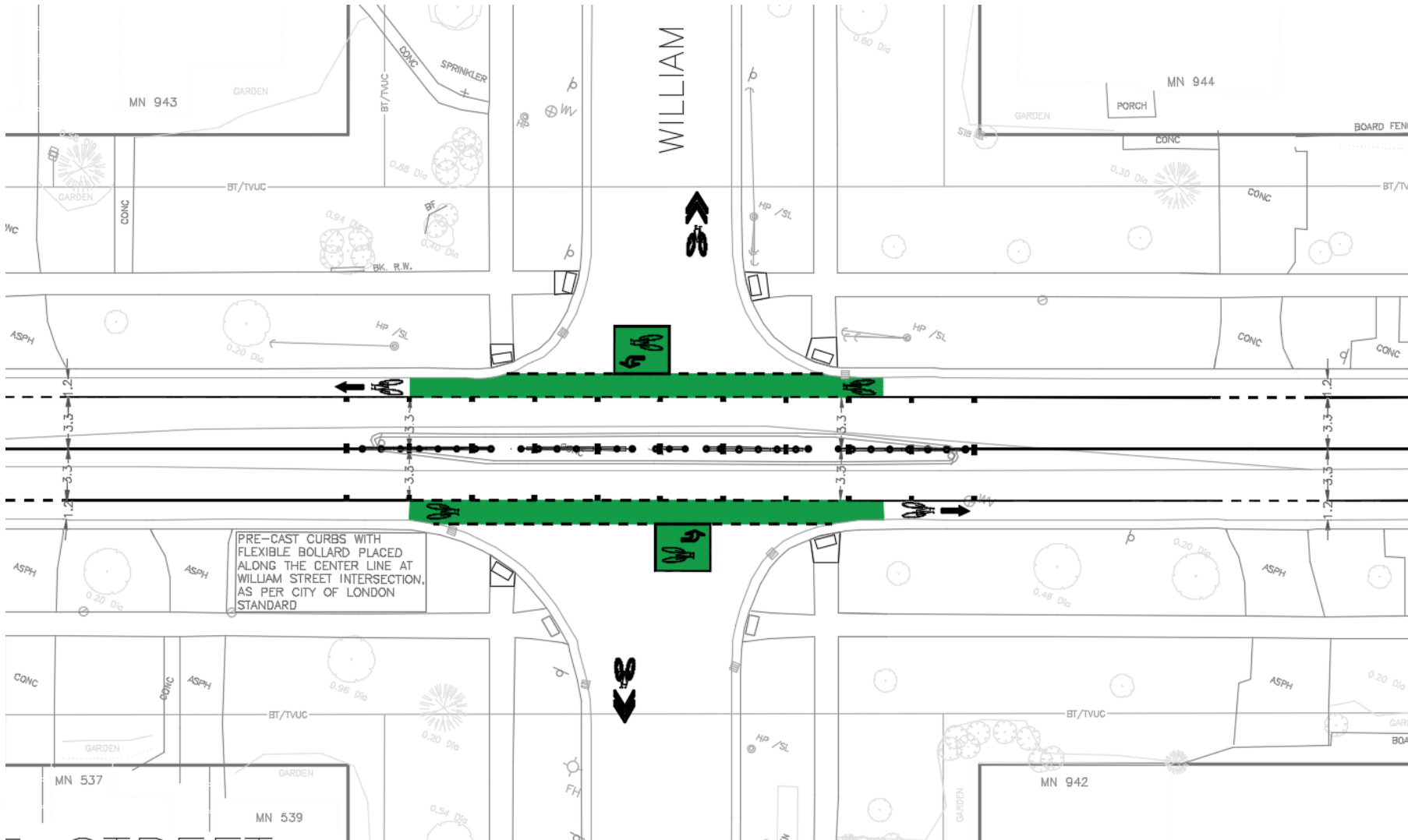
Segment 3 impacts – Colborne St to Adelaide St

- Adds cycling facilities on both sides (interim solution until larger infrastructure project in 2026)
- Maintains vehicle capacity, including turn lanes
- Minor tree impacts at Colborne Street intersection (approx. 7 trees)
- On-street parking impacts (approx. 8 spaces)



London
CANADA

William Street Intersection





Tree assessment & approach

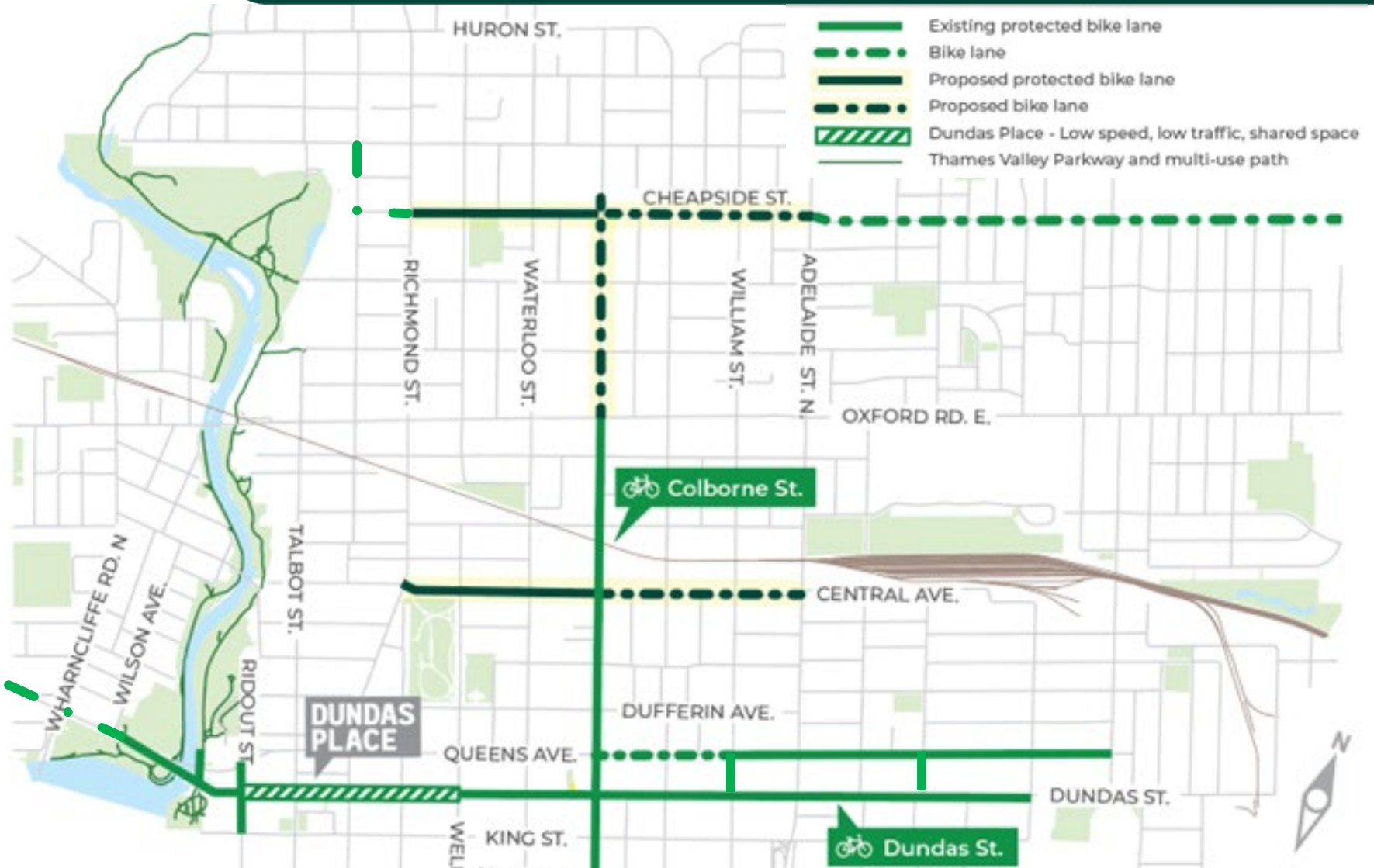
- A tree assessment was completed by the City of London's Forestry team
- Approximately 33 trees on the north side of Cheapside Street between Richmond and Colborne Streets were identified for removal
 - Many of these trees are in poor health and have been over-pruned due to their proximity to hydro lines
- Approximately 10 trees on the south side of Cheapside Street between Richmond and Wellington Streets, and near Colborne Street are identified for removal



Construction impacts

- Both lanes will be open for most of the project; traffic will be periodically detoured
- Work will occur between 7 a.m. and 7 p.m.
- Access to private driveways to be maintained
- City of London will provide preconstruction letter with full details ahead of construction (approximately two weeks prior)

Core cycling network





Next steps

- Drop-in public update meeting:
Wednesday Feb. 22, 4:30 – 6:30 p.m.
St. Michael's Elementary School
926 Maitland St (just south of Cheapside St)
- Finalize project design and prepare for summer construction*
(* Project is contingent on federal/provincial funding)