



**imagine**  
**design**  
**develop**

**T H E F U T U R E O F H E A L T H C A R E**

---

# Our unique role in the system

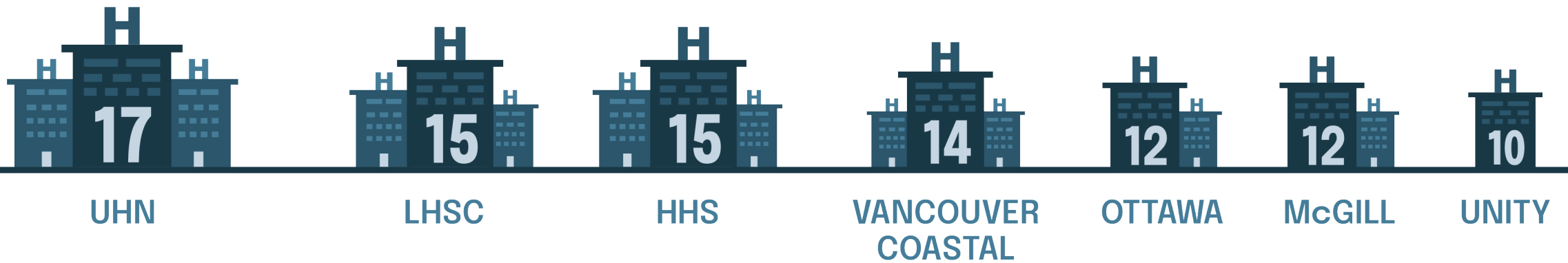
We are **London's community hospital + one of Canada's largest research-intensive acute care teaching hospitals**, providing care to our region and province.

Our team provides:

- Primary care
- Secondary care
- Tertiary care
- Quaternary care



# London's largest employer



*Comparable hospitals by staff size, 000s*

A unique

**MOMENT IN TIME**

# COVID-19 Pandemic

## Lasting impacts on LHSC and the larger system

- Infection prevention and control
- Virtual care
- Health human resources
- Capacity challenges



# System transformation

## An evolving Ontario health system



**Ontario  
Health**



**Ontario Health**  
West



**MIDDLESEX  
LONDON**  
Ontario Health Team



**London Health  
Sciences Centre**



**Children's Hospital**  
London Health Sciences Centre

# Organizational transformation

Supporting the communities we serve through:

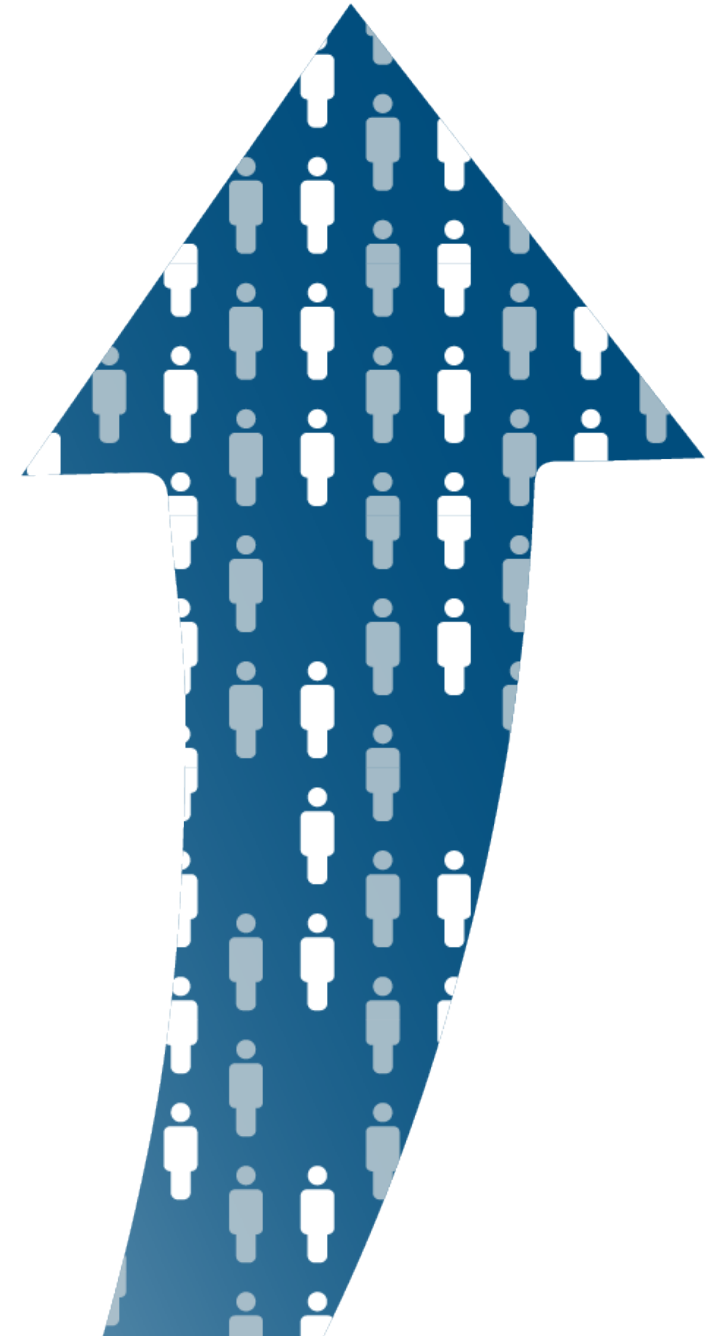
- New organizational structure
- Strategic Planning
- New ways of partnering and collaborating
- Advancing health equity, inclusion and social accountability

# Population changes

London is the fastest growing city in the province.

The number of seniors (aged 75+) is expected to double within next 20 years.

The need for hospital care of someone aged 85+ is **18 times higher** than an average adult who is between the ages of 18 and 59.

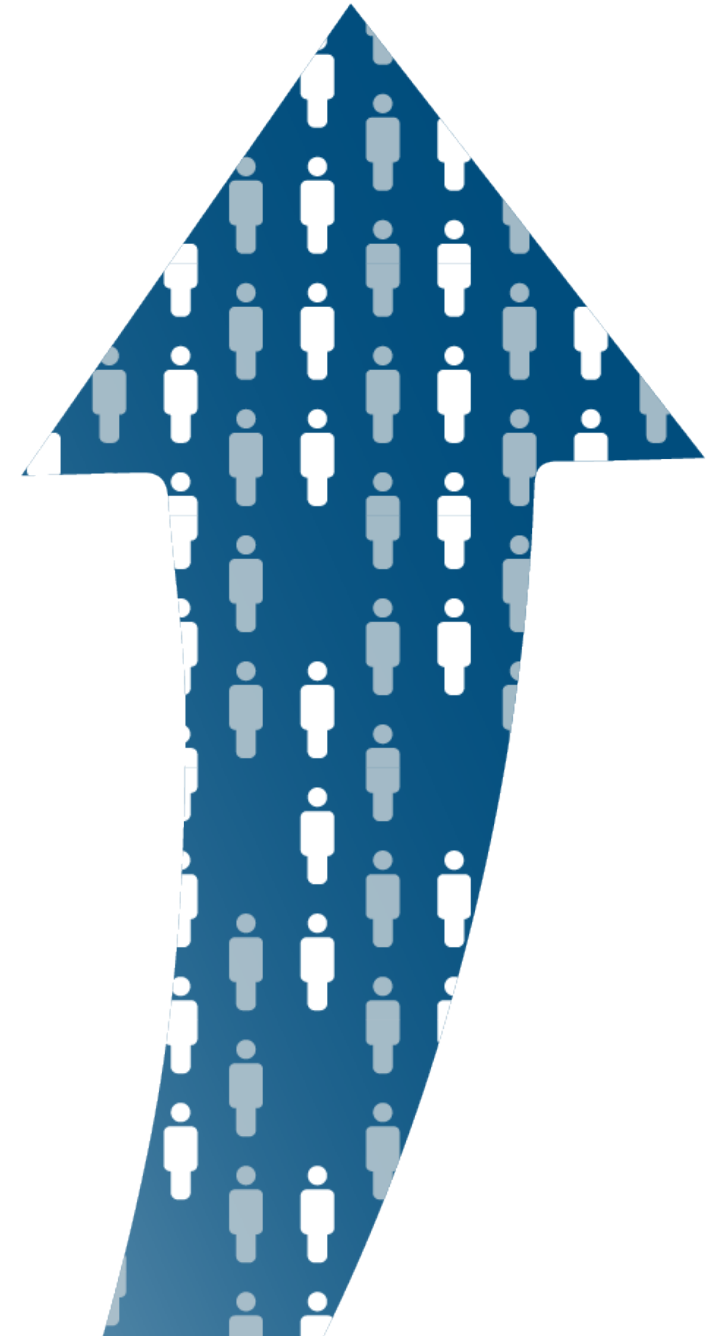




# Volume projections

## Anticipated growth by 2039/40:

- Inpatient beds = 60% increase
- Day surgeries = 20% increase
- Inpatient surgeries = 25% increase
- ED visits = 25% increase
- Ambulatory care visits = 30% increase



We require

**REDEVELOPMENT**

# Redevelopment of Ontario hospitals

- Hospital redevelopment is a multi-year process requiring an approved Master Plan from Ontario Health and the Ministry of Health
- It requires robust engagement



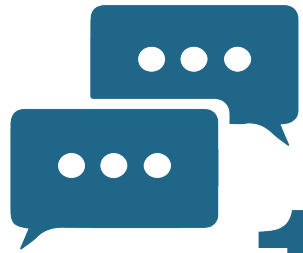
# Aligning to London's Climate Emergency Action Plan (CEAP)

- We have already begun discussions with the City of London on how we can align to London's CEAP, including Area of Focus #3: Transforming Buildings and Development
- This has been a key topic of discussion in our planning conversations



**Planetary Health**

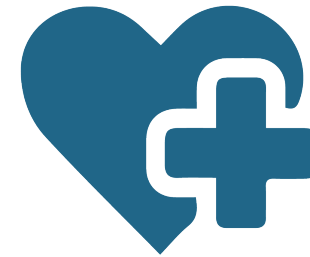
# Results of early engagement



Facilitated **15** interviews  
with health care, academic  
and community leaders

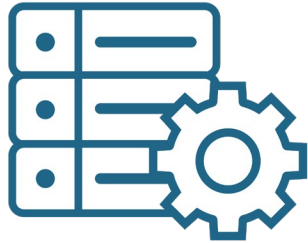


**500** pieces  
of input on social media



Connected with **36**  
partners and community  
organizations

# Key themes emerging from engagement



**System Integration and  
Communication**



**Enhancing Accessibility  
and Inclusivity within the  
Hospital Network**



**Wait Times and  
Staffing Shortages**



**Mental Health and  
Reducing Stigma**



**Proactively Preparing for  
Future Health Needs**

# 3 KEY INNOVATIONS



Grouping of  
services



Strengthening  
partnerships



Integrating research  
and teaching

Our redevelopment  
**JOURNEY**  
is only beginning.



# The Master Planning process

01

## Early Planning

**Stage 1.1**  
Pre-Capital Submission

12 – 18 months

**Stage 1.2**  
Proposal Development

12 months

**Stage 1.3**  
Functional Program

02

## Detailed Planning

**Stage 2.1**  
Design 1 (Block Schematics)

16 – 20 months

**Stage 2.2**  
Design 2 (Sketch Plan)

12 – 14 months

**Stage 2.3**  
Contract Documents

03

## Construction

**Stage 3.1**  
Award of (Construction) Contract

**Stage 3.2**  
Construction

**Stage 3.3**  
Settlement

~2 – 3.5+ years

04

## Post Occupancy

3 – 5 months  
(after substantial  
completion)

Together, we are supporting the  
**BEST CARE FOR  
LONDONERS.**

Questions

