

Dingman Drive Improvements – Wellington Road to Highway 401



ITCAC Meeting - November 16, 2022

Project Team



Michelle Morris P.Eng

City of London Project Manager
Transportation Design Engineer



Violetta Sypien

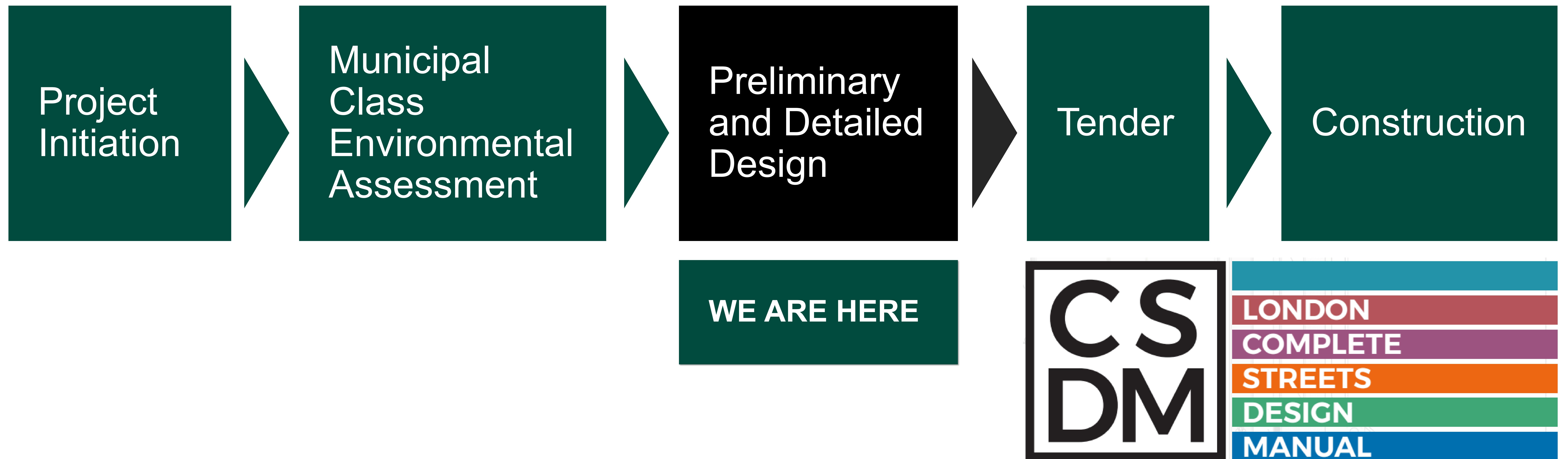
City of London
Transportation Technologist



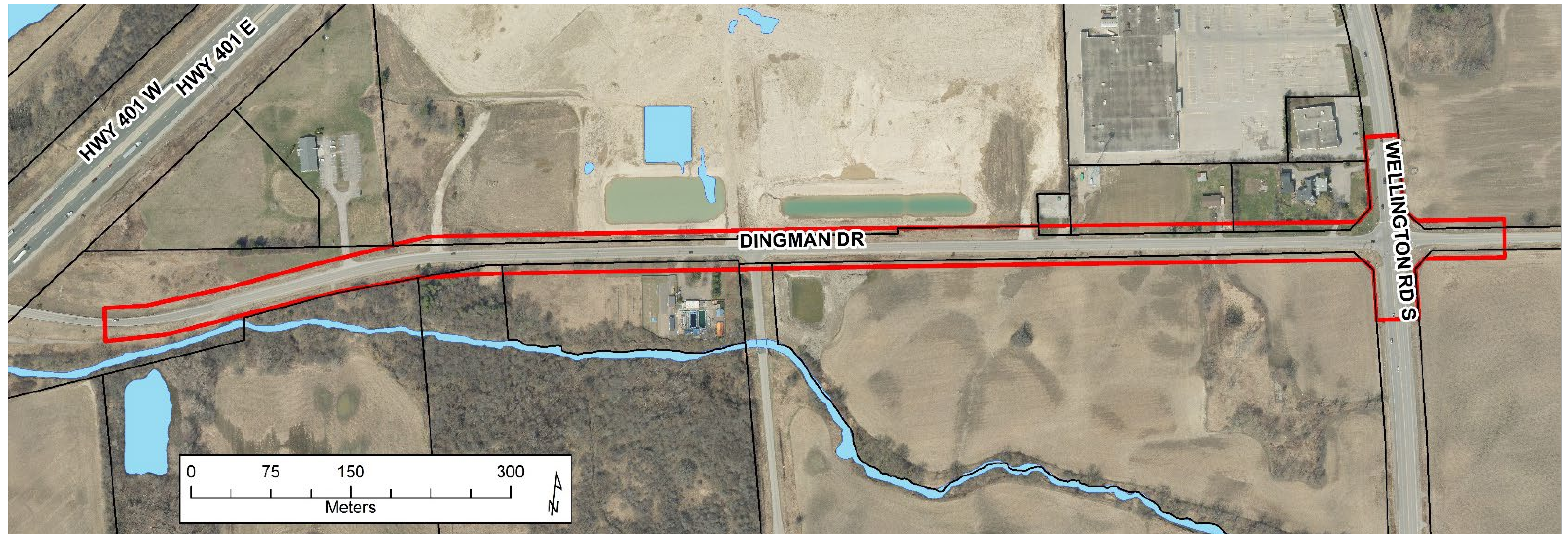
John Haasen, PMP

AECOM
Consultant Project Manager

Project Background



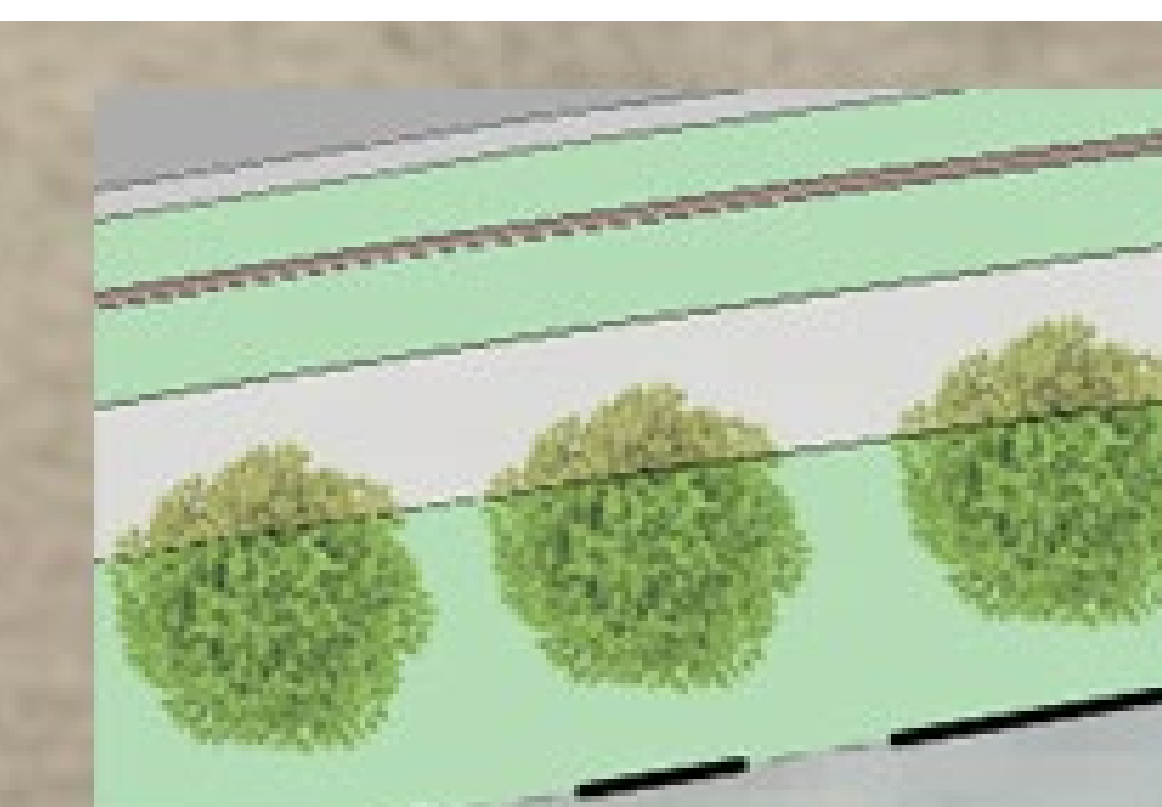
Limits of Project Construction



Project Design and Construction Overview



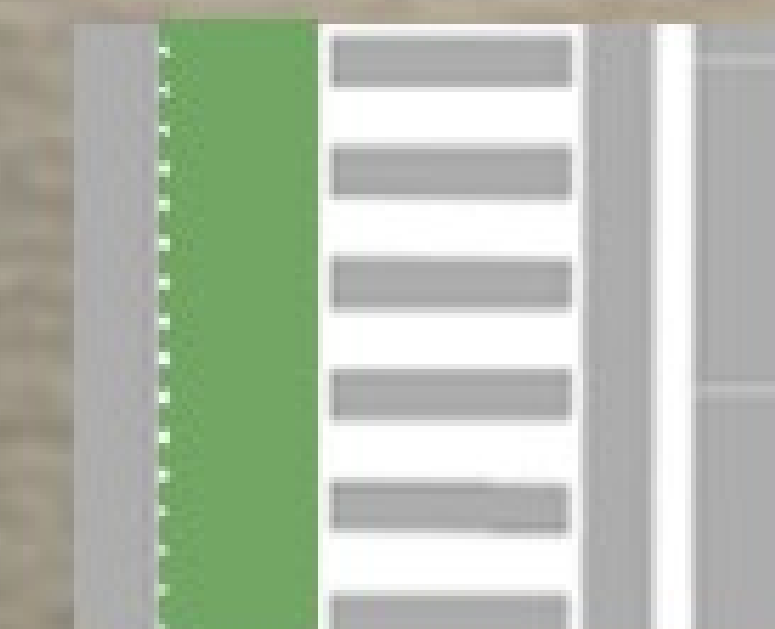
Streetscape



PROPOSED DECIDUOUS TREES



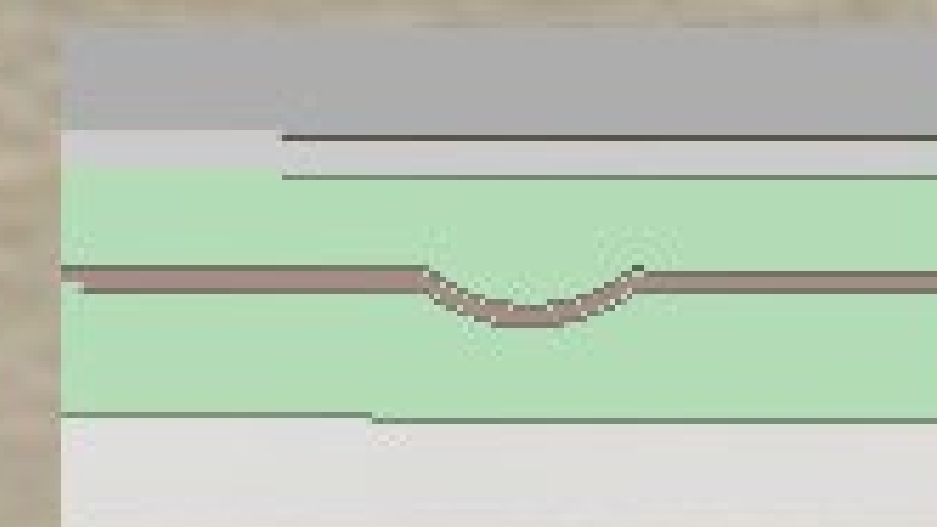
MEDIAN WITH FLOWERING
SEED MIX



ENHANCED PEDESTRIAN
CROSSING WITH CROSS-RIDE

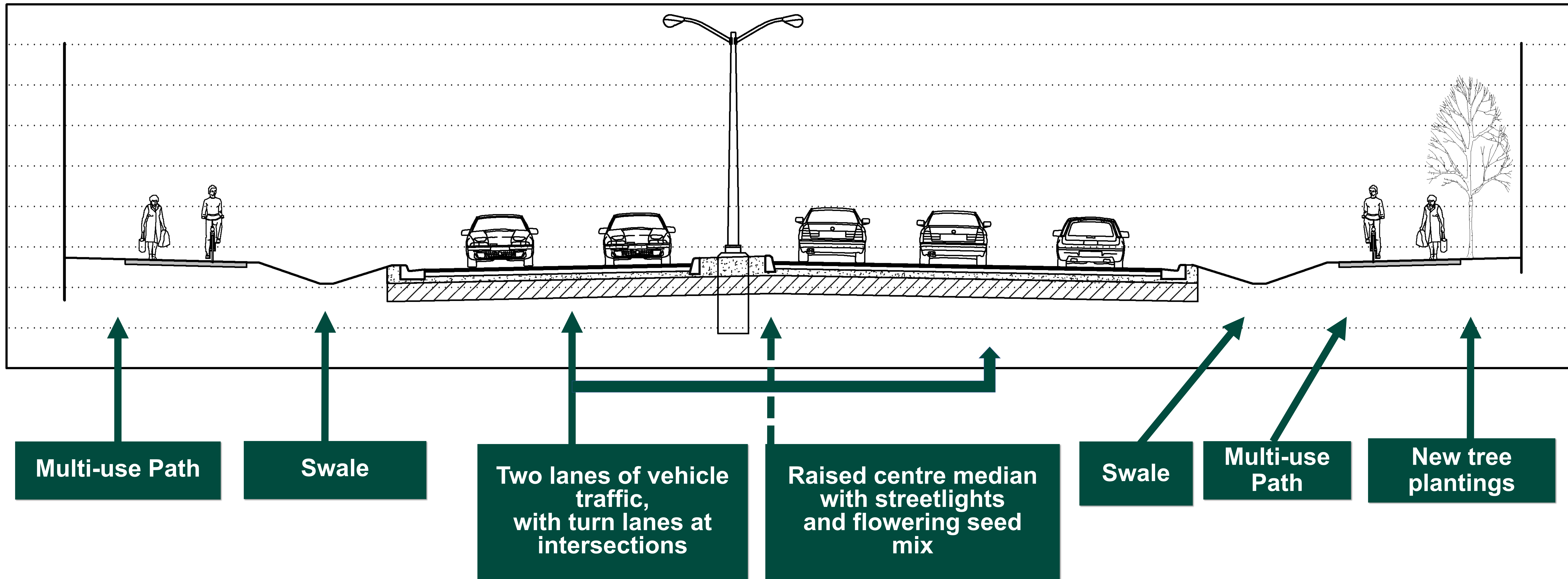


DETECTABLE WARNING PLATES AT
PEDESTRIAN CROSSWALKS



BIOSWALE: HYDROSEEDDED SIDE
SLOPES AND MULCH BOTTOM

Typical Cross-section



From Highway 401 east towards Wellington Road



Roxborough Road Intersection



LEGEND

-  PROPOSED DECIDUOUS TREES
-  MEDIAN WITH FLOWERING SEED MIX
-  ENHANCED PEDESTRIAN CROSSING WITH CROSS-RIDE
-  DETECTABLE WARNING PLATES AT PEDESTRIAN CROSSWALKS
-  BIOSWALE: HYDROSEEDED SIDE SLOPES AND MULCH BOTTOM

Wellington Road South intersection



Next Steps

- Public Update Meeting (pre-recorded) – November 16, 2022
- Complete tree removal in advance of construction – Winter 2022 / 2023
- Utilities (hydro, gas) pre-work – Winter 2022 / 2023
- Project tendering and contract award – Spring 2023
- Approximate construction duration – Spring 2023 to End of 2023

Thank You