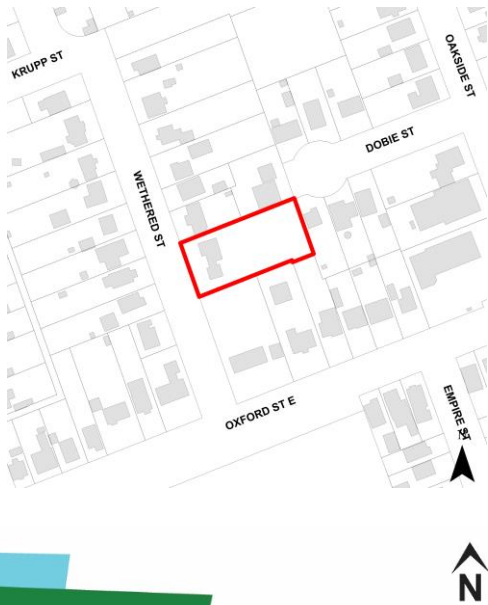




NOTICE OF REVISED PLANNING APPLICATION

Zoning By-Law Amendment

16 Wethered Street



File: Z-9309

Applicant: 2445727 Ontario Inc. (Phil Pattyn)

What is Proposed?

Zoning amendment to allow:

- An eight-unit, two-storey townhouse
- A reduced front yard depth of 5 metres

LEARN MORE & PROVIDE INPUT

Please provide any comments by **July 21, 2022**

Olga Alchits

oalchits@london.ca

519-661-CITY (2489) ext.7154

Planning and Development, City of London

300 Dufferin Avenue, 6th Floor,

London ON PO Box 5035 N6A 4L9

File: Z-9309

london.ca/planapps

You may also discuss any concerns you have with your Ward Councillor:

Jesse Helmer

jhelmer@london.ca

519-661-CITY (2489) ext. 4004

**If you are a landlord, please post a copy of this notice where your tenants can see it.
We want to make sure they have a chance to take part.**

Date of Notice: June 30, 2022

Application Details

Requested Zoning By-law Amendment

To change the zoning from a Residential R1 (R1-6) Zone to a Residential R5 Special Provision (R5-4(_)) Zone. Changes to the currently permitted land uses and development regulations are summarized below.

The Zoning By-law is available at london.ca.

Current Zoning

Zone: Residential R1 (R1-6) Zone

Permitted Uses: a single detached dwelling

Special Provision(s): n/a

Residential Density: minimum lot frontage – 15.0 metres; minimum lot area – 450 sq. metres

Height: 10.5 metres

Requested Zoning

Zone: Residential R5 Special Provision (R5-4(_)) Zone

Permitted Uses: Cluster townhouse dwellings and cluster stacked townhouse dwellings

Special Provision(s): minimum front yard depth of 5.0 metres in place of 6.0 metres

Residential Density: 40 units per hectare

Height: 12.0 metres

The City may also consider additional special provisions to establish an appropriate development intensity or building envelope.

Planning Policies

Any change to the Zoning By-law must conform to the policies of the Official Plan, London's long-range planning document. These lands are currently designated as Low Density Residential in the 1989 Official Plan, which permits single-detached, semi-detached and duplex dwellings as the main uses. It also permits consideration of residential intensification up to a maximum density of 75 units per hectare in the form of single detached and semi-detached dwellings, attached dwellings, cluster housing and low rise apartments.

The subject lands are in the Neighbourhoods Place Type on a Neighbourhood Street in The London Plan, permitting single detached, semi-detached, and duplex dwellings, converted dwellings, townhouses, secondary suites, home occupations, and group homes.

How Can You Participate in the Planning Process?

You have received this Notice because someone has applied to change the Official Plan designation and the zoning of land located within 120 metres of a property you own, or your landlord has posted the notice of application in your building. The City reviews and makes decisions on such planning applications in accordance with the requirements of the Planning Act. The ways you can participate in the City's planning review and decision making process are summarized below.

See More Information

You can review additional information and material about this application by:

- Contacting the City's Planner listed on the first page of this Notice;
- Viewing the application-specific page at london.ca/planapps; or,
- Please note that this application is being circulated during the State of Emergency issued by the Province of Ontario. Opportunities to view any file materials in-person by appointment can be arranged through the file Planner.

Reply to this Notice of Application

We are inviting your comments on the requested changes at this time so that we can consider them as we review the application and prepare a report that will include Development Services staff's recommendation to the City's Planning and Environment Committee. Planning considerations usually include such matters as land use, development intensity, and form of development.

This request represents residential intensification as defined in the policies of the Official Plan. Under these policies, Development Services staff and the Planning and Environment Committee will also consider detailed site plan matters such as fencing, landscaping, lighting, driveway locations, building scale and design, and the location of the proposed building on the site. We would like to hear your comments on these matters.

Attend a Future Public Participation Meeting

The Planning and Environment Committee will consider the requested Official Plan and zoning changes on a date that has not yet been scheduled. The City will send you another notice inviting you to attend this meeting, which is required by the Planning Act. You will also be invited to provide your comments at this public participation meeting. A neighbourhood or community association may exist in your area. If it reflects your views on this application, you may wish to select a representative of the association to speak on your behalf at the public participation meeting. Neighbourhood Associations are listed on the [Neighbourgood](#) website. The Planning and Environment Committee will make a recommendation to Council, which will make its decision at a future Council meeting.

What Are Your Legal Rights?

Notification of Council Decision

If you wish to be notified of the decision of the City of London on the proposed zoning by-law amendment, you must make a written request to the City Clerk, 300 Dufferin Ave., P.O. Box 5035, London, ON, N6A 4L9, or at docservices@london.ca. You will also be notified if you speak to the Planning and Environment Committee at the public meeting about this application and leave your name and address with the Secretary of the Committee.

Right to Appeal to the Ontario Land Tribunal

If a person or public body does not make oral submissions at a public meeting, if one is held, or make written submissions to the City of London in respect of the proposed plan of condominium before the approval authority gives or refuses to give approval to the draft plan of condominium, the person or public body is not entitled to appeal the decision of the Director, Planning & Development to the Ontario Land Tribunal.

If a person or public body does not make oral submissions at a public meeting, if one is held, or make written submissions to the City of London in respect of the proposed plan of condominium before the approval authority gives or refuses to give approval to the draft plan of condominium, the person or public body may not be added as a party to the hearing of an appeal before the Ontario Land Tribunal unless, in the opinion of the Tribunal, there are reasonable grounds to do so.

For more information go to <https://olt.gov.on.ca/appeals-process/forms/>.

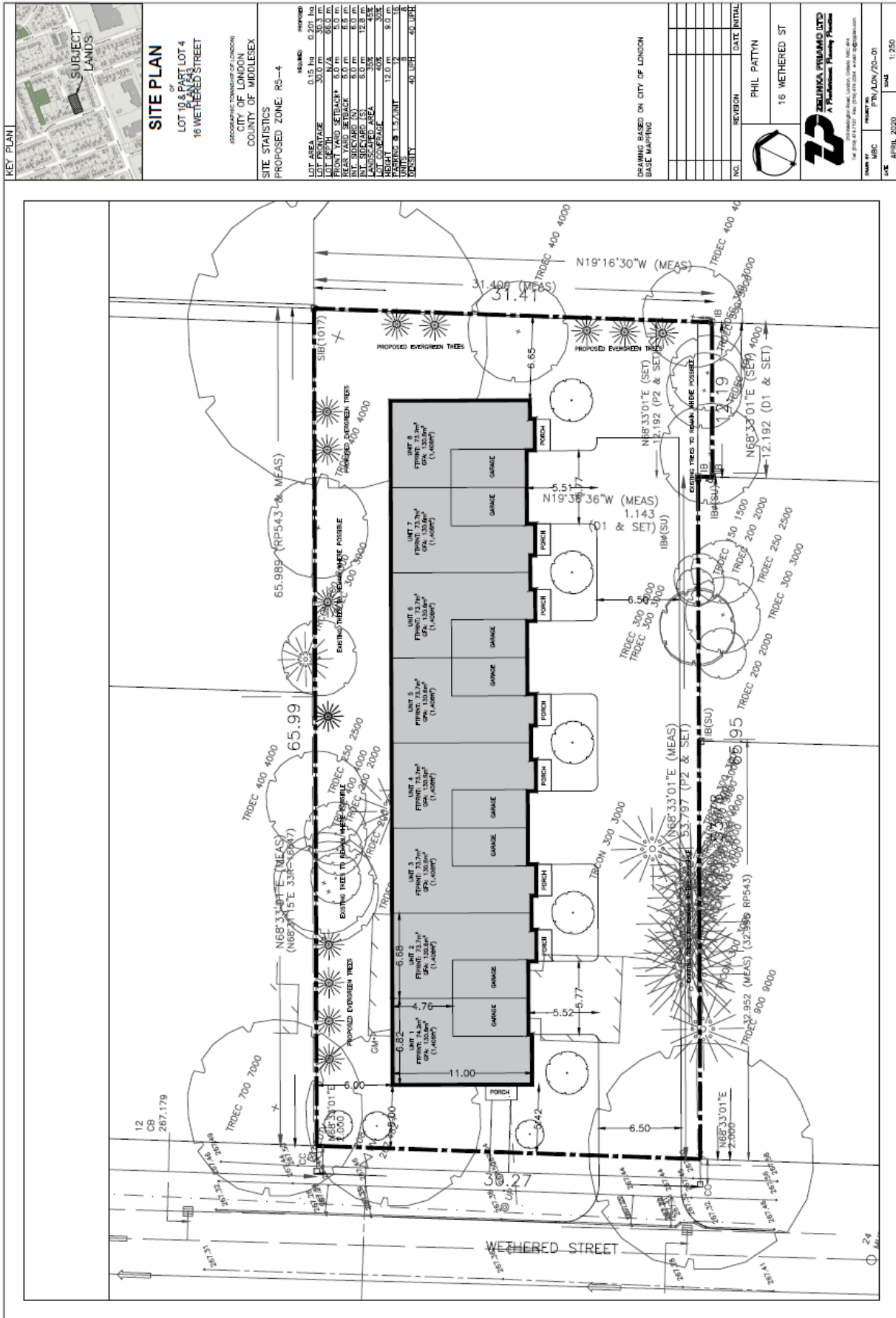
Notice of Collection of Personal Information

Personal information collected and recorded at the Public Participation Meeting, or through written submissions on this subject, is collected under the authority of the Municipal Act, 2001, as amended, and the Planning Act, 1990 R.S.O. 1990, c.P.13 and will be used by Members of Council and City of London staff in their consideration of this matter. The written submissions, including names and contact information and the associated reports arising from the public participation process, will be made available to the public, including publishing on the City's website. Video recordings of the Public Participation Meeting may also be posted to the City of London's website. Questions about this collection should be referred to Evelina Skalski, Manager, Records and Information Services 519-661-CITY(2489) ext. 5590.

Accessibility

Alternative accessible formats or communication supports are available upon request. Please contact plandev@london.ca for more information.

Site Concept



The above image represents the applicant's proposal as submitted and may change.

Building Renderings



LEFT ELEVATION

View from Wethered St.

BRICK	BRICK	WOOD
STONE	WOOD	PAINT
CONCRETE	WOOD	PAINT
CONCRETE	WOOD	PAINT
CONCRETE	WOOD	PAINT
CONCRETE	WOOD	PAINT
CONCRETE	WOOD	PAINT
CONCRETE	WOOD	PAINT
CONCRETE	WOOD	PAINT
CONCRETE	WOOD	PAINT

NO.	DATE	DESCRIPTION OF REVISION

ENG PLUS
 Engineers, Architects and Building Consultants
 16 WETHERED STREET
 OPTION 4
 OVERALL ELEVATIONS
 20.093

Concept Plan & Elevations

The above images represent the applicant's proposal as submitted and may change.