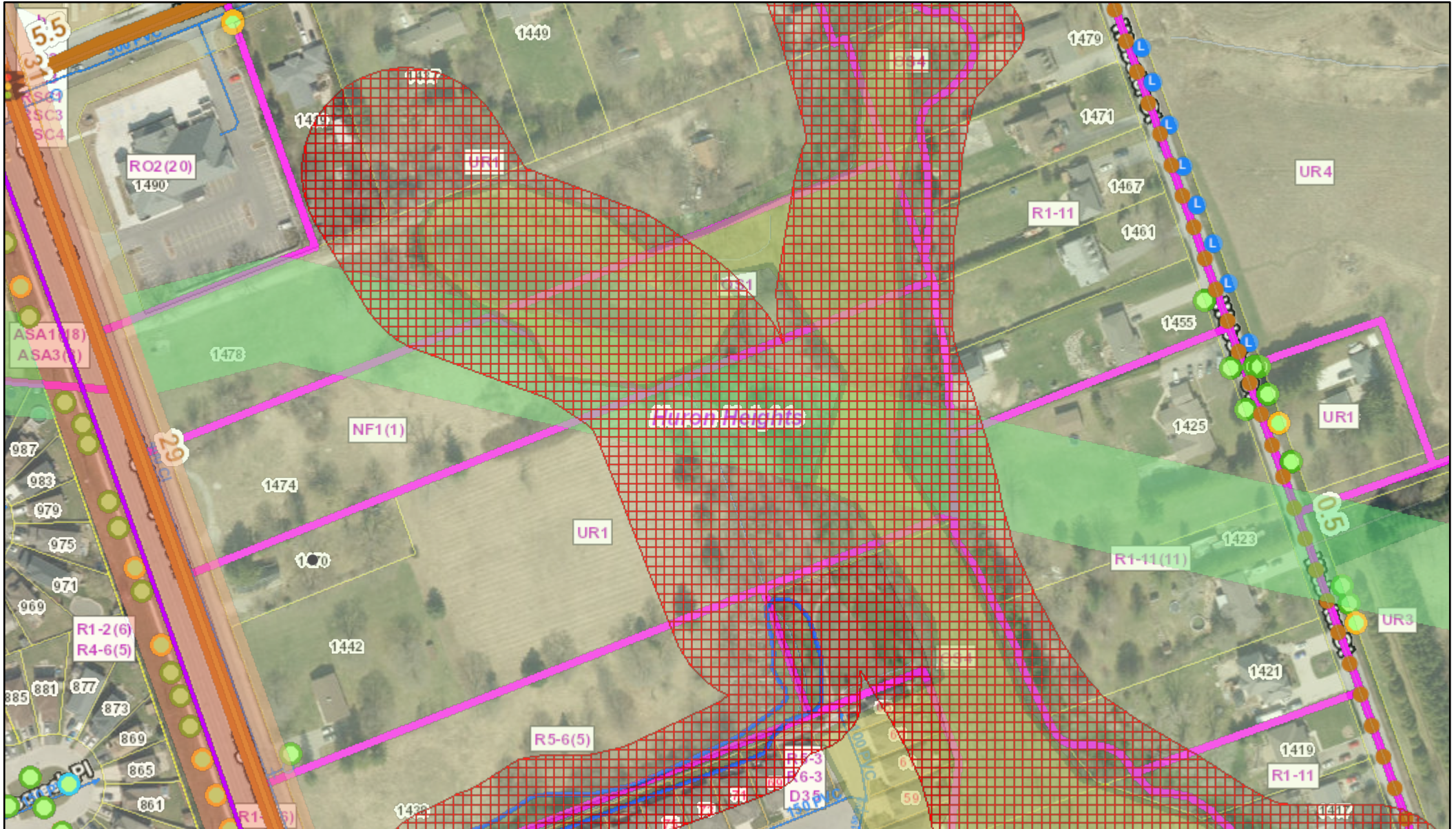
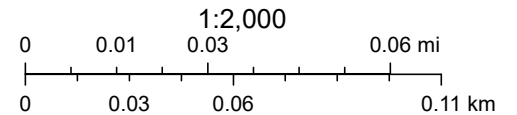


# Corporate City Map



5/12/2022, 9:32:40 AM

- |                          |                          |                               |
|--------------------------|--------------------------|-------------------------------|
| Indigenous Potential     | Other Multi-use Pathways | Bike Road Route - Signed      |
| Historic Potential       | Sharrows                 | Bike Lane and Shared Parking  |
| Walking Trails - Unpaved | Path Adjacent to Street  | Bike Lane                     |
| Thames Valley Parkway    | Buffered Bike Lane       | Thames Valley Parkway Markers |



Corporation of the City of London | Produced For: Planning Administration | Produced by: Environmental & Engineering Services - Geomatics, gfbgf, Corporation of the City of London | Produced For: Environmental & Engineering Services - Solid Waste | Produced by: Environmental & Engineering Services -

The Corporation of the City of London