



Environment & Infrastructure Services ITCAC Points of Interest



Integrated Transportation Community Advisory Committee
June 15, 2022

Environment & Infrastructure Team

Senior Leadership Team liaison to ITCAC:

- Kelly Scherr, Deputy City Manager, Environment & Infrastructure Services

Environment & Infrastructure Directors:

- Doug MacRae, Transportation & Mobility
- Jennie Dann, Construction & Infrastructure
- Jay Stanford, Climate Change, Environment & Waste Management
- Scott Stafford, Parks and Forestry



Delivering and operating infrastructure

- Environment & Infrastructure will bring forward projects, plans and policies that are in progress to ITCAC
- Agenda items are intended to:
 - Update ITCAC on advancements
 - Consult ITCAC for feedback on options
 - Notify ITCAC of key project and program milestones
- Key team members will provide an overview of:
 - Current and near-term projects
 - ITCAC agenda items to watch for



Transportation & Mobility Overview

What we're working on:

- Mobility Master Plan (MMP)
- Vision Zero/Road Safety
- Asset Management & Complete Streets
- Active Transportation Infrastructure
- Connected & Automated Vehicle Strategy



Mobility Master Plan - What is it?

- Long-range plan providing framework and priorities for transportation and mobility infrastructure, policies and programs for a growing sustainable city
- Once-in-a-decade opportunity
- Replaces and builds upon the Smart Moves Transportation Master Plan and the London ON Bikes Cycling Master Plan



Mobility Master Plan - What's Different?

- Recognizing difference between “transportation” and “mobility”
- Integrating land use, mobility and climate change goals
- Multi-modal level of service
- Learnings from the COVID-19 pandemic
- Embedding equity and public health



Mobility Master Plan - Addressing City Priorities

- Improving access to jobs and daily needs
- Managing congestion
- Supporting affordable transportation options
- Improving city-wide transit
- Improving connections for inter-city travel
- Creating a safer city for women and girls
- Making the city more accessible for people with disabilities
- Reducing greenhouse gas emissions



Mobility Master Plan - Schedule

Phase 1 (Spring 2022)

- Consult on vision and guiding principles
- Learn about mobility experiences

Phase 2: Explore solutions & make connections

- Identify issues and opportunities
- Collect people-trip information
- Develop options for future mobility networks

Phase 3: Confirm & refine path forward (Winter 2024)

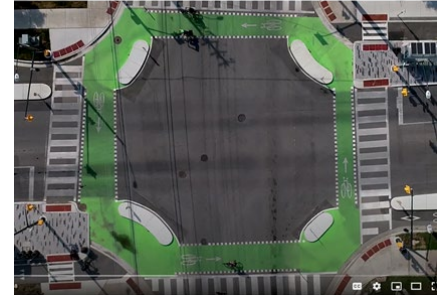
- Forecast budgets needed to carry out the plan
- Final recommendations



Road Safety/Vision Zero

Staying Current with Best Practices and implementing programs such as:

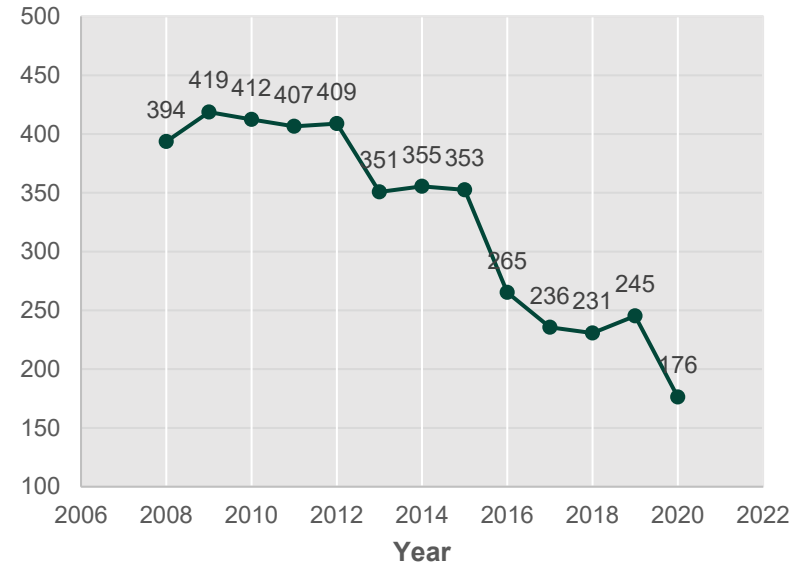
- Lower Speed Limits
- Automated Speed Enforcement
- Leading Pedestrian Intervals
- Better Infrastructure Design



Road Safety - Collision Monitoring



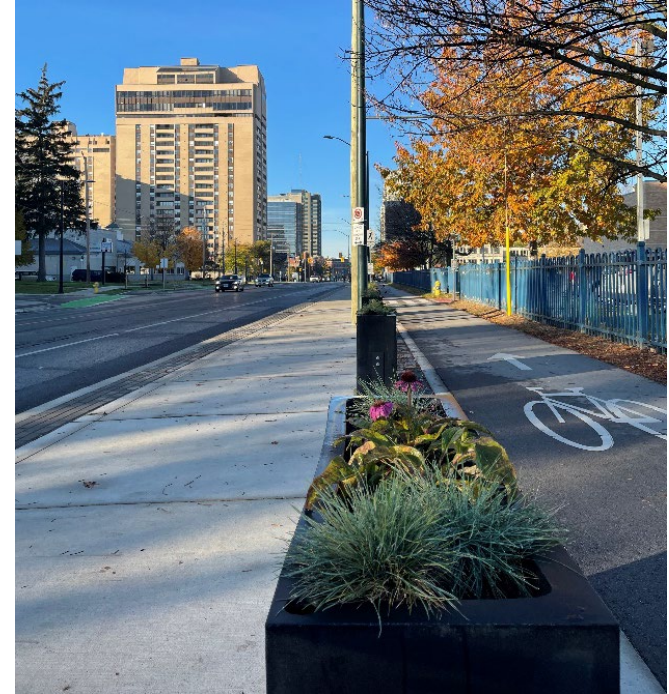
Number of Serious Collisions Per
100,000 People



Environmental Assessments

An Environmental Assessment is an early planning stage for infrastructure projects. Miscellaneous studies are also undertaken. These are some current studies:

- Western Road / Sarnia Road Improvements
- Kensington Bridge
- Blackfriars Bridge Future Use



The design and construction phases follow the Environmental Assessment. These are some current projects:

- Wharncliffe Road Improvements
- Fanshawe Park Road / Richmond Street Intersection Improvements
- Colonel Talbot Road / Southdale Road Roundabout
- Adelaide Underpass



Active Transportation Overview

What we're working on:

Cycling programs and projects:

- Mobility Master Plan

Cycling design projects:

- Cycle tracks on Dundas
- Protected bike lanes on Wavell
- Bike counters

Walking programs and projects:

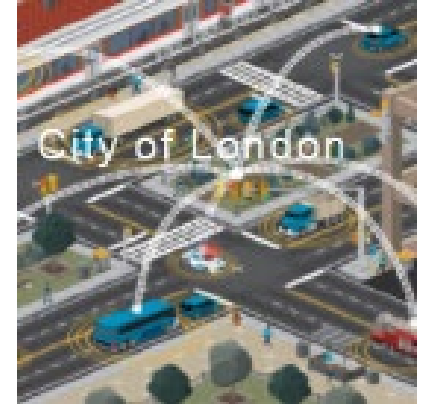
- New Sidewalk Program
- Road safety & pedestrian crossings



Connected & Automated Vehicles Overview

What we're working on:

- Long Term Strategy in development
- Integrated Mobility
- Land Use and Urban Form
- Equity & Social Health
- Environmental Sustainability
- Data Security



Construction Administration

- Team leading Renew London

Major Projects

- Team leading implementation of Rapid Transit projects

Geomatics

- Team managing geospatial data and technical land-related information



CIS Overview

What we're working on:

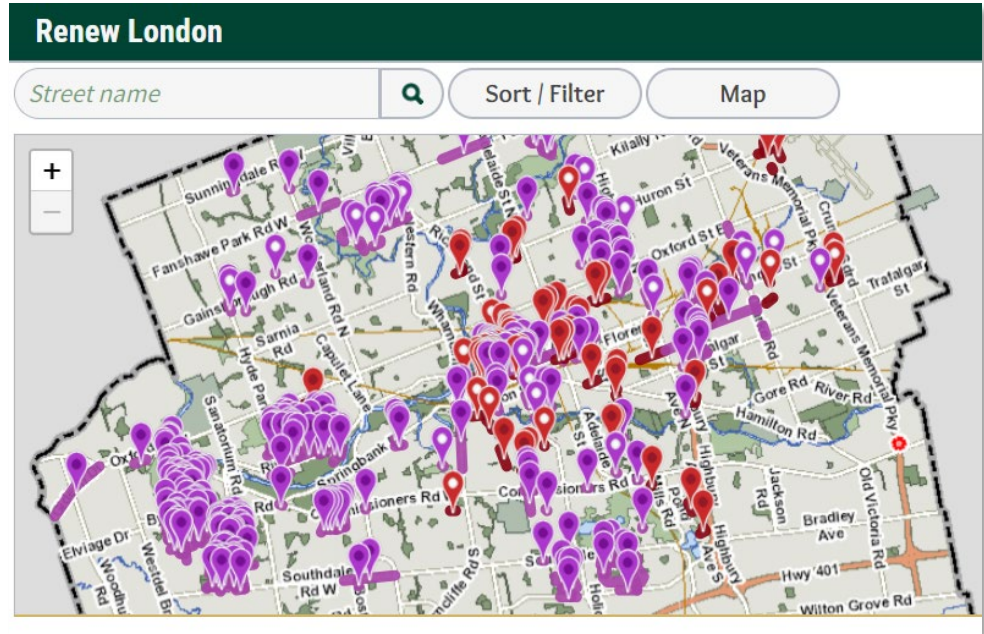
- Renew London Program
- 2022 Top 10 Projects
- Rapid Transit
- Neighbourhood Connectivity Plan



Renew London

The annual Renew London infrastructure program supports future development, protects the environment, and manages the infrastructure gap.

london.ca/roadwork





Renew London Investment



2022 Renew London

by the numbers



\$190M Total investment

Road improvements

20+ intersection improvements will be constructed for safer pedestrian connections

90 lane-kilometres of road to be reconstructed

15+ km of new bike lanes to be added

18 km of sidewalks to be replaced

Water system improvements

7.5 km of watermain to be built

13 km of sanitary and storm sewers to be replaced or added

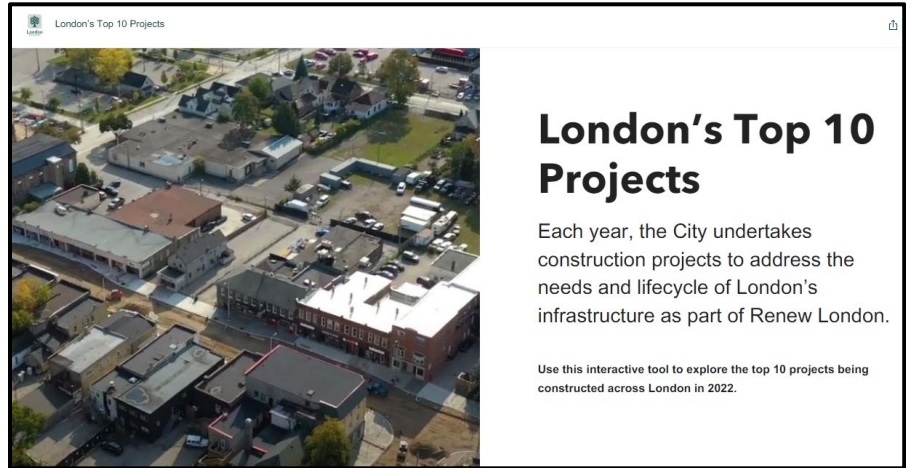
Sewer improvements



2022 London's Top 10 Projects

1. Adelaide Underpass
2. Downtown Loop Phase 2
3. East London Link Phase 1
4. Southdale Road West Improvements
5. Victoria Bridge Replacement
6. Mud Creek Phase 2
7. Kilworth Bridge Rehabilitation
8. Queens Avenue Road and Cycle Rehabilitation
9. Pottersburg Phase 1 Reconstruction
10. Brydges Street Reconstruction

Interactive story map
london.ca/topten



Rapid Transit

1 The Downtown Loop (2021 – 2023)

2 East London Link (2022 – 2025)

3 Wellington Gateway (2023 – 2026)



Downtown Loop

Construction: 2021 - 2023



East London Link

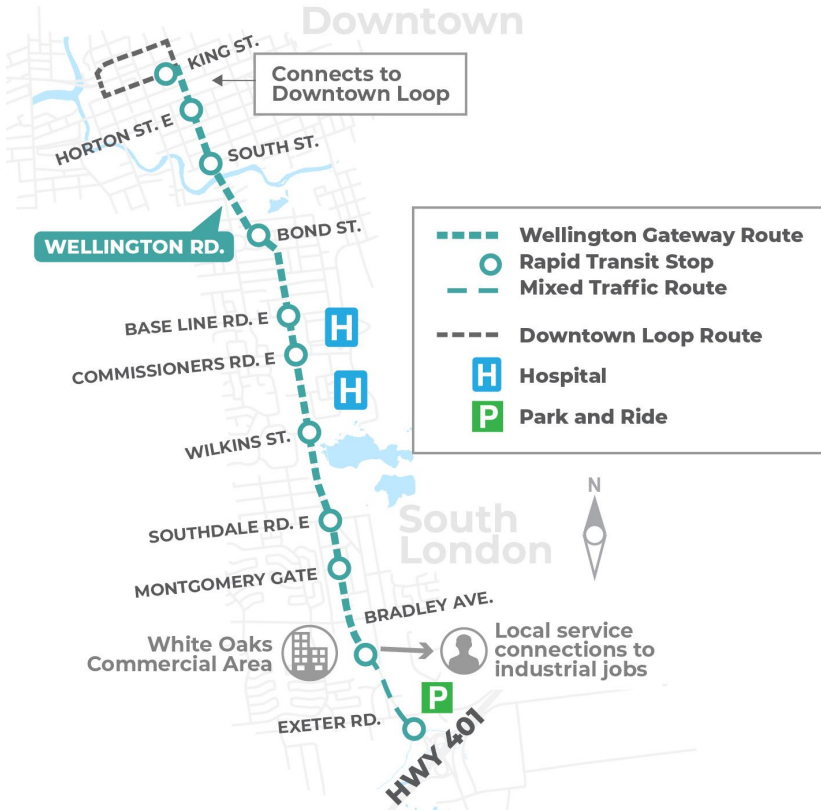
Construction: 2022 - 2025





Wellington Gateway

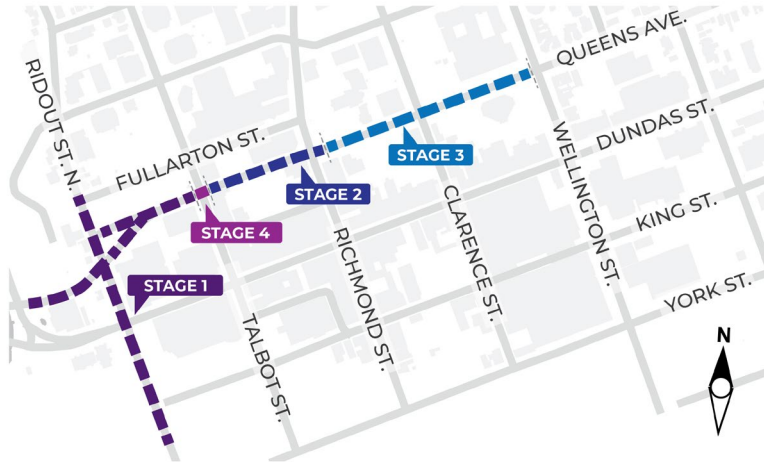
Construction: 2023 - 2026



What we're building this year

Downtown Loop Phase 2

Queens Avenue and Ridout Street North



East Link Phase 1

King Street from Wellington Street to Lyle Street



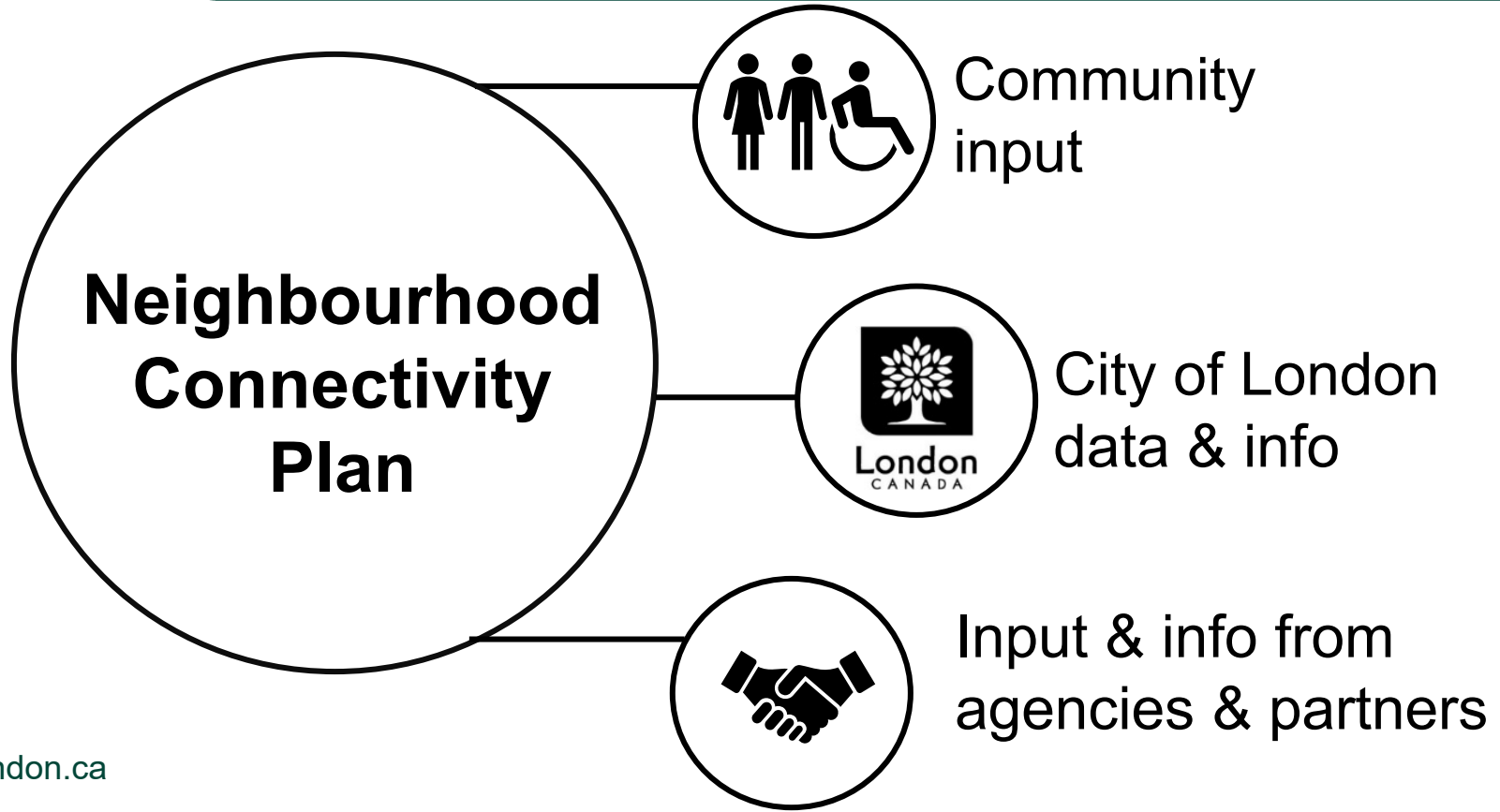
Neighbourhood Connectivity Plan (NCP)



Connectivity and accessibility need to be improved in certain neighbourhoods...

but a more deliberate, strategic approach that considers the whole neighbourhood is required.

Creating the plan



The process



STAGE 1: NEIGHBOURHOOD CONSULTATION

Staff gather input from community and stakeholders to create a “Neighbourhood Connectivity Plan”



CITY COUNCIL REVIEWS RECOMMENDATIONS

Council considers recommendations made in the “Neighbourhood Connectivity Plan”



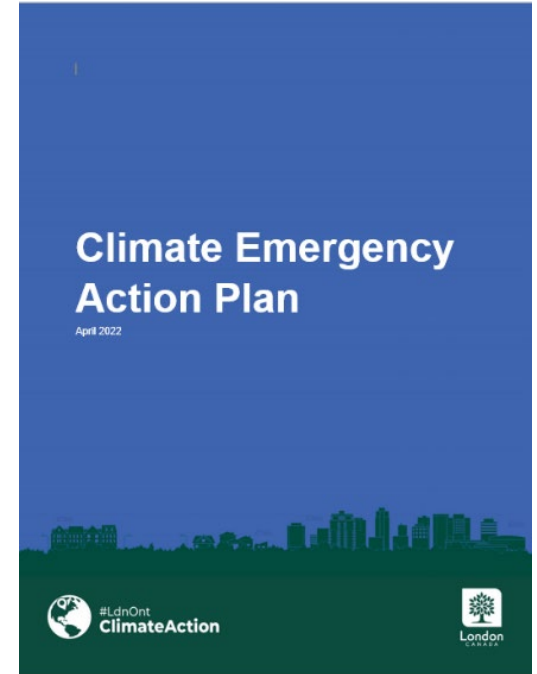
STAGE 2: STREET-LEVEL ENGAGEMENT

Staff consult at a street level in places where sidewalks were recommended



Climate Emergency Action Plan Overview

1. Net Zero Emissions by 2050
2. Improved Resilience
3. Bring Everyone Along





London
CANADA

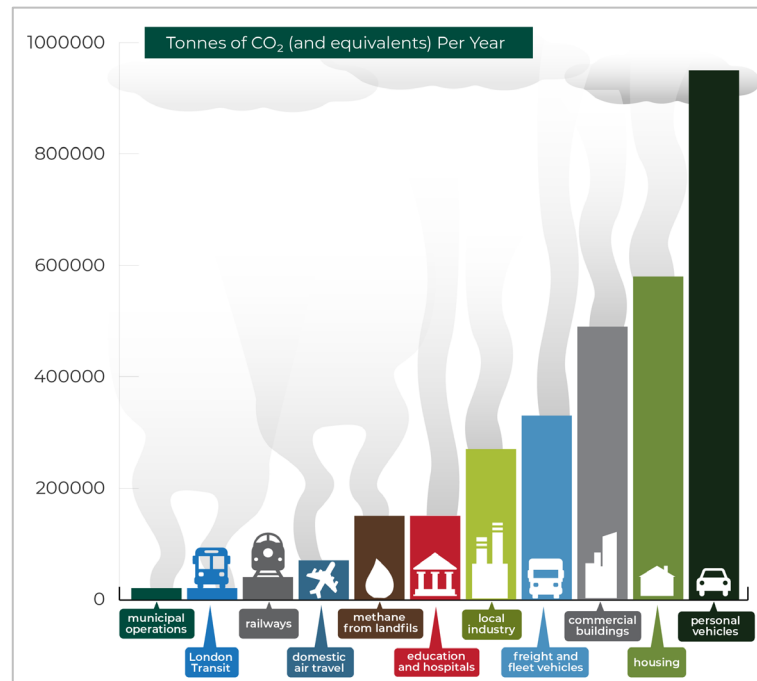
Area of Focus 4: Transforming Transportation and Mobility

Overall direction:

- Design and/or encourage increased use of walking, cycling, micro-mobility, carpooling, and transit

Programs that focus on residents, commuters and employers/employees:

- Mobility choices and benefits
- Transportation Demand Management and Transportation Management Association





Transportation Demand Management (TDM) - What is it?

The use of policies, programs, services and products that influence whether, why, when, where and how people travel. TDM strategies seek to increase the efficiency of a transportation system by influencing travel behaviour.

Reduce

- Reliance on single occupancy vehicles(SOV)
- Vehicle kilometres travelled (VKT)
- Capital expenditures
- Maintenance costs
- Traffic congestion
- GHG emissions

Improve

- Road safety
- Air quality
- Health
- Social connections

Transportation Management Association

- Revisit winter 2020 employer/employee survey findings
- Launch targeted employer survey – we need updates
- Revisit operating TMAs in Ontario for recent learnings
- Finalize TMA geographic scope, program offerings
- Engage potential partners
- Target - launch Q4 2022



Other Projects and Initiatives

- Bike Parking (including bike locker pilot)
- Micromobility
- Bike and Walk Maps
- Outreach projects and events





Parks Planning & Design

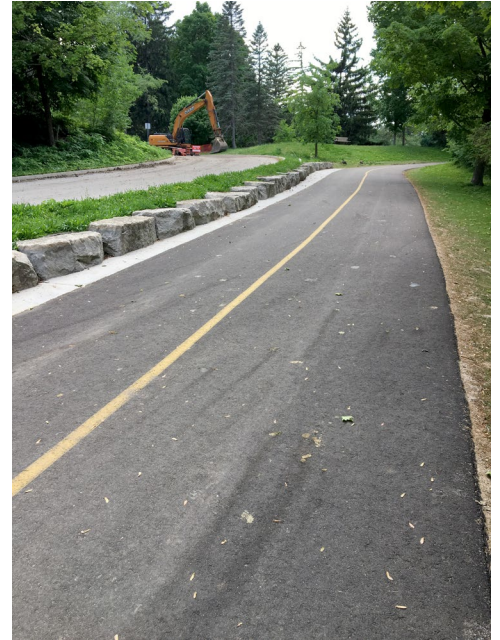
Infrastructure Management

Under Parks & Forestry, the Parks Planning & Design section (PP&D) manages the planning, design, construction, and renewal of the recreational pathway system.

PP&D brings forward major pathway projects and plans to ITCAC.

What we're working on:

- Invasive species management to control damaging roots
- Lifecycle renewal upgrades along the North Branch TVP
- Preliminary design for the Stoney Creek Connection
- New sections of pathway within growth areas



Questions?

