

Bill No. 222
2022

By-law No. S.-____-____

A by-law to lay out, constitute, establish and assume lands in the City of London as public highway. (as widening to Southdale Road West between Westdel Bourne and Colonel Talbot Road; and as widening to Wickerson Road north of Southdale Road West)

WHEREAS it is expedient to establish the lands hereinafter described as public highway;

NOW THEREFORE the Municipal Council of The Corporation of the City of London enacts as follows:

1. The lands and premises hereinafter described are laid out, constituted, established and assumed as public highway as widening to Southdale Road West between Westdel Bourne and Colonel Talbot Road, namely:

“Part of Lot 79, Concession West of the North Branch of Talbot Road, in the geographic Township of Westminster, now in the City of London and County of Middlesex, designated as Parts 1, 4, 5, 6, 7, 8, 9 and 10 on Reference Plan 33R-20970;

Part of Lot 49, Concession 1, in the geographic Township of Westminster, now in the City of London and County of Middlesex, designated as Part 2 on Reference Plan 33R-21075;

Part of Lot 48, Concession 1, in the geographic Township of Westminster, now in the City of London and County of Middlesex, designated as Part 6 on Reference Plan 33R-21075;

Part of Lot 47, Concession 1, in the geographic Township of Westminster, now in the City of London and County of Middlesex, designated as Parts 7, 8 and 9 on Reference Plan 33R-21075;

Part of Block 108, Registered Plan 33M-417 in the City of London and County of Middlesex, designated as Part 10 on Reference Plan 33R-21075;

Part of Lot 48, Concession 2, in the geographic Township of Westminster, now in the City of London and County of Middlesex, designated as Parts 11, 12, 13 and 17 on Reference Plan 33R-21075; and

Part of Lot 79, Concession West of the North Branch of Talbot Road, in the geographic Township of Westminster, now in the City of London and County of Middlesex, designated as Parts 18 and 21 on Reference Plan 33R-21075.”

2. The lands and premises hereinafter described are laid out, constituted, established and assumed as public highway as widening to Wickerson Road north of Southdale Road West, namely:

“Part of Lot 48, Concession 1, in the geographic Township of Westminster, now in the City of London and County of Middlesex, designated as Parts 1, 2 and 3 on Expropriation Plan ER1453063.”

2. This by-law comes into force and effect on the day it is passed.

PASSED in Open Council on May 24, 2022.

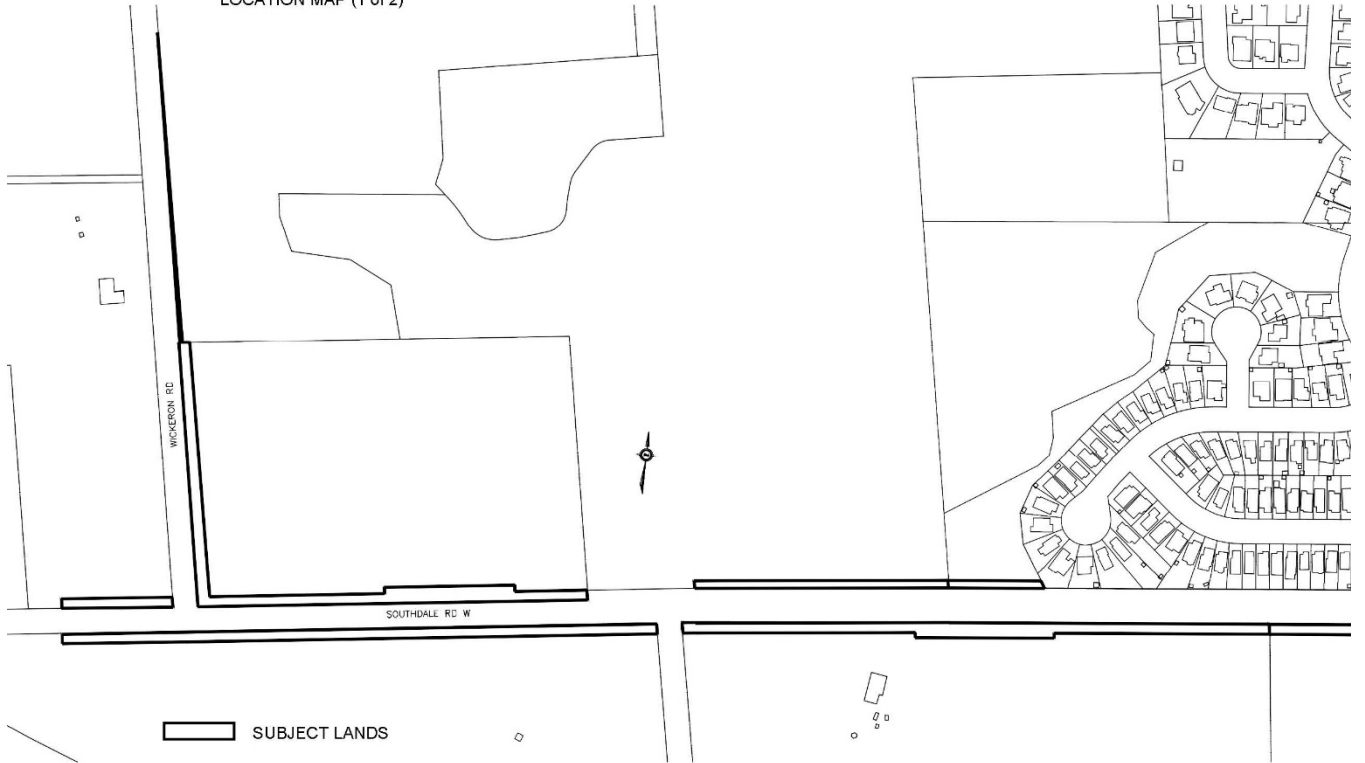
Ed Holder
Mayor

Michael Schulthess
City Clerk

First Reading – May 24, 2022
Second Reading – May 24, 2022
Third Reading – May 24, 2022

Location Map

LOCATION MAP (1 of 2)



LOCATION MAP (2 of 2)

