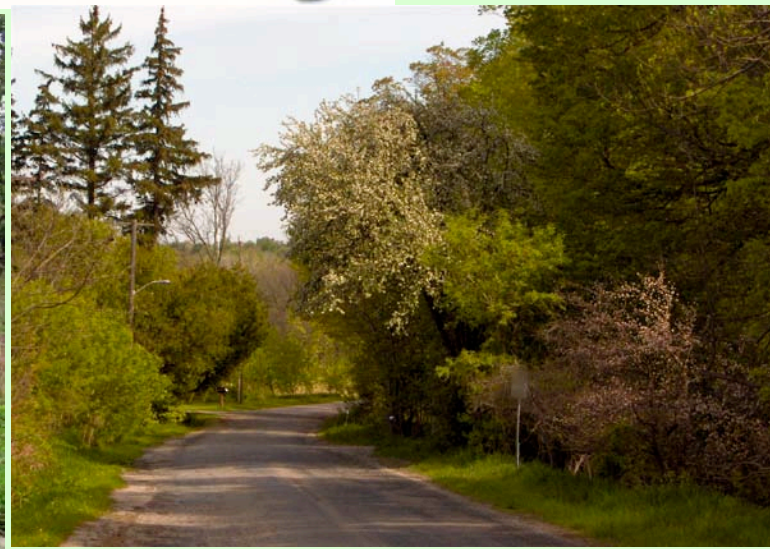
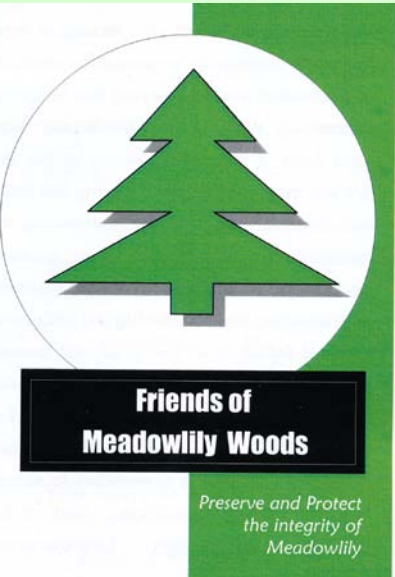


Meadowlily as a Cultural Heritage Landscape



Presentation at the London
Advisory Committee on Heritage
June 12, 5:30 pm.

Cultural Heritage Landscapes

G.NELSON

TO:	CHAIR AND MEMBERS - PLANNING COMMITTEE
FROM:	V. A. COTE GENERAL MANAGER OF PLANNING AND DEVELOPMENT
SUBJECT:	CULTURAL HERITAGE LANDSCAPES FEBRUARY 10, 2003 4:30 PM

RECOMMENDATION

That, on the recommendation of the General Manager of Planning and Development, based on the application of the City of London with respect to Cultural Heritage Landscapes:

(i) A by-law **BE INTRODUCED** at the Municipal Council meeting on February 17, 2003, to amend the Official Plan (in accordance with the attached amendment) to add to Chapter 13, Heritage Resources Policies, the following new sections:

- 13.4 Cultural Heritage Landscapes
- 13.4.1 Guidelines for the Identification of Cultural Heritage Landscapes
- 13.4.2 Conservation of Cultural Heritage Landscapes
- 13.4.3 Preparation of Guidelines for Specific Cultural Heritage Landscapes
- 13.4.4 Public Works and Projects
- 13.4.5 Listed Cultural Heritage Landscapes

and to amend Section 19.2.2.(ii) to add the following new sections:

- (o) Guidelines for the Identification of Cultural Heritage Landscapes
- (p) Cultural Heritage Landscape Guidelines

Image of the 10 February 2003 report to Planning and Development Committee regarding creating a by-law that would recognize and designate areas of London with the new term: "cultural heritage landscape."

Excerpt of the 10 February 2003 Report to Planning:

Listing of potential Cultural Heritage Landscapes in the Official Plan Policy:

Comment: Listed potential Cultural Heritage Sites in the Official Plan Policy should include Victoria Park, Sifton Bog, **Meadowlily Woods**; Gibbons Park, Thames River Valley Corridor, Pond Mills, Medway River Valley; London Port Stanley Railway line and all cemeteries.

Response: The Official Plan Policy will only list those Cultural Heritage Landscapes that have been identified based upon the Guidelines for the Identification of Cultural Heritage Landscapes. The listed sites may be appraised as potential Cultural-Heritage Landscapes... It is expected that these will represent a relatively limited number of Cultural Heritage Landscapes identified in the Official Plan. It should be recognized that there are many other mechanisms already in place to identify, manage and protect natural heritage areas.

Official Plan Guidelines for Cultural Heritage Landscapes

13.5.1: A Cultural Heritage Landscape is a specific geographic area of heritage significance composed of a number of heritage elements. Such landscapes may be associated with historic events, activities, or people. Such a landscape is valued by Londoners and is of significance to the understanding of the history of a people or place. Cultural Heritage landscapes will only be recognized where ownership consent is given. Cultural Heritage Landscapes will be recognized primarily on publicly owned lands, but may also be identified on privately owned property. Cultural Heritage landscapes will be identified based upon Guidelines for the Identification of Cultural Heritage Landscapes, as adopted by City Council under the provisions of Section 19.2.2 of this Plan. (guideline documents)

Thames Valley Corridor Plan

Recommends several times that the Meadowlily Area be designated as a Cultural Heritage Landscape:



CH-3 Undertake investigations to confirm the following areas as cultural heritage landscapes:

Commissioners Road, Meadowlily area (includes the heritage remains of Meadowlily Mill built in 1856, Park Farm which included the Harrison Fraser Estate / Masonry house, constructed in 1849; the 1910 Meadowlily Bridge) p. 26.

Park Farm/ Meadowlily Woods **Environmentally Significant Area:**

The tract of land encompasses extensive natural areas; Park Farm, a significant cultural heritage property, established in 1849; a number of significant archaeological sites; and the remains of the Meadowlily Mill, built in 1856. Nearby is the c. 1910 Meadowlily Bridge that once served as a road bridge and later a pedestrian bridge, and now under a City Council Resolution to protect, preserve and restore the 100 year old bridge in its centennial year. Page 22 (also pages 8, 39, 40).

From: Archaeological & Built Heritage Background Assessment: Meadowlily Area Plan

This study provides the Built Heritage assessment required by the Terms of Reference for the Meadowlily Area Plan (section 7.2; see plate 1): it includes an inventory and assessment of built heritage resources within and adjacent to the study area, including Meadowlily Bridge, linking the north and south branches of Meadowlily Road, and the remains of the Meadowlily Mill on the north side of the river. As required by the Terms of Reference, the study also includes reference to the City of London Inventory of Heritage Resources; it considers the potential of the area as either a **Cultural Heritage Landscape** or a **Heritage Conservation District** as described in the City of London Official Plan; it makes recommendations for conservation and/or designation of properties deemed significant; and it provides general guidelines for integrating new development with heritage resources. It is understood that more detailed guidelines and site studies will be required after decisions have been made regarding future land use in the study area and prior to any new development in the area. (Page 1; see also page 22)

From the Same Meadowlily Study:

“That the entire study area, the adjacent area north of the river containing the Meadowlily Mill site and the earthworks outlining the mill pond, Meadowlily Bridge, and the river lands between the two areas be designated under the Ontario Heritage Act as a Heritage Conservation District.” (page 96)

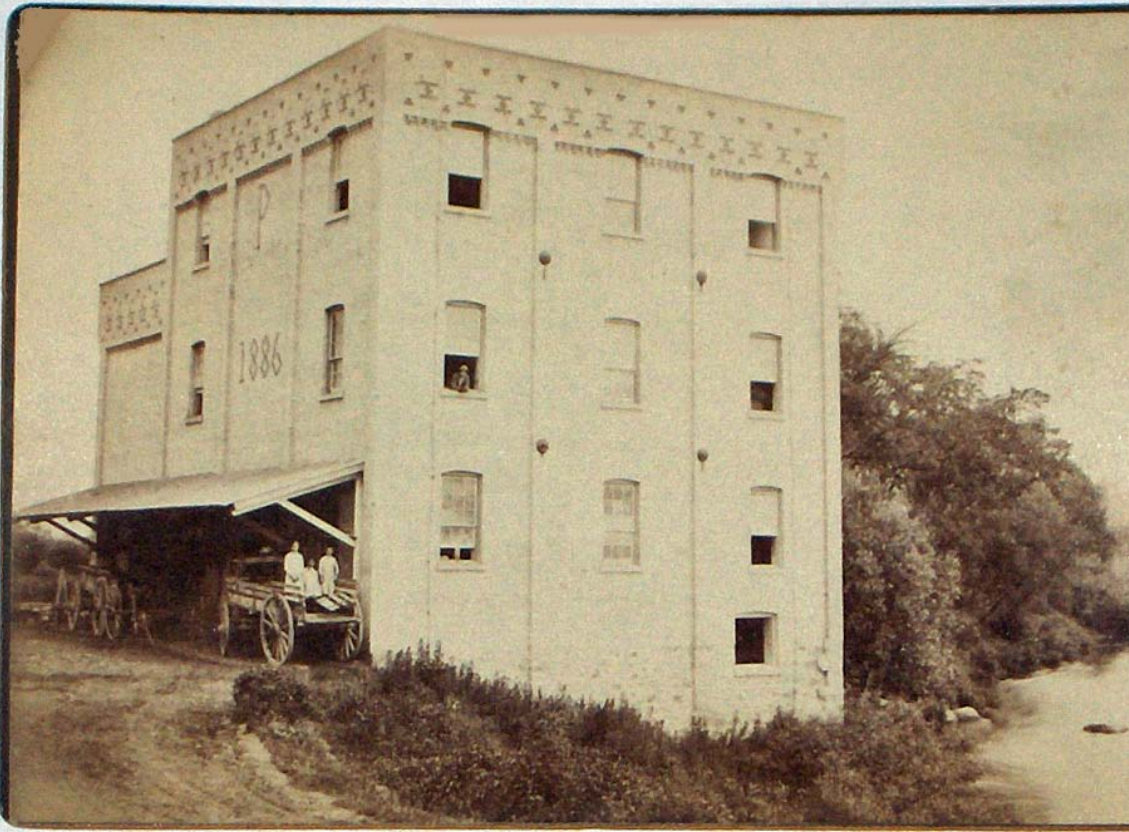
Also from the same heritage study:

“That the general character of the historical road scape of Meadowlily Road be retained.

The road itself is significant as a very early road in Westminster Township and as an essential part of the history of Meadowlily Bridge. Although the road has been paved and widened at various points in its history, it remains relatively narrow, and its borders retain the embankments, ditches, and vegetation characteristic of a minor country road. This quality is important as part of the overall milieu of the area.” Page 98.



Meadowlily-Plewes Mill Site



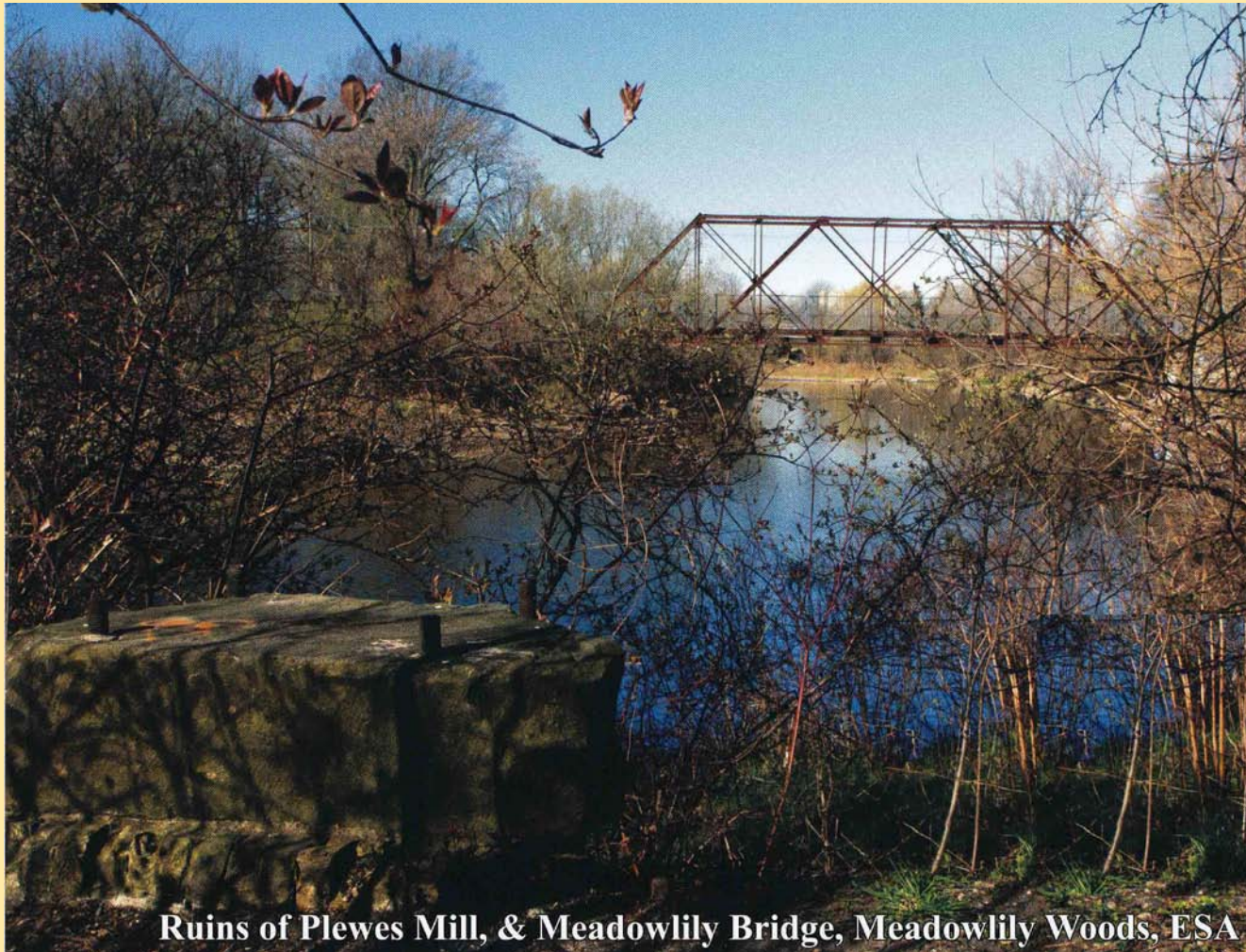
As a part of designating the Meadowlily Area as a Cultural Heritage Landscape, we would like to see the ruins of the Meadowlily-Plewes Mill Site be heritage designated as well.

Other Views of the Meadowlily Mill Ruins Today:



Existing Mill walls from the south, east and west

Meadowlily Bridge and Mill In Context



Ruins of Plewes Mill, & Meadowlily Bridge, Meadowlily Woods, ESA

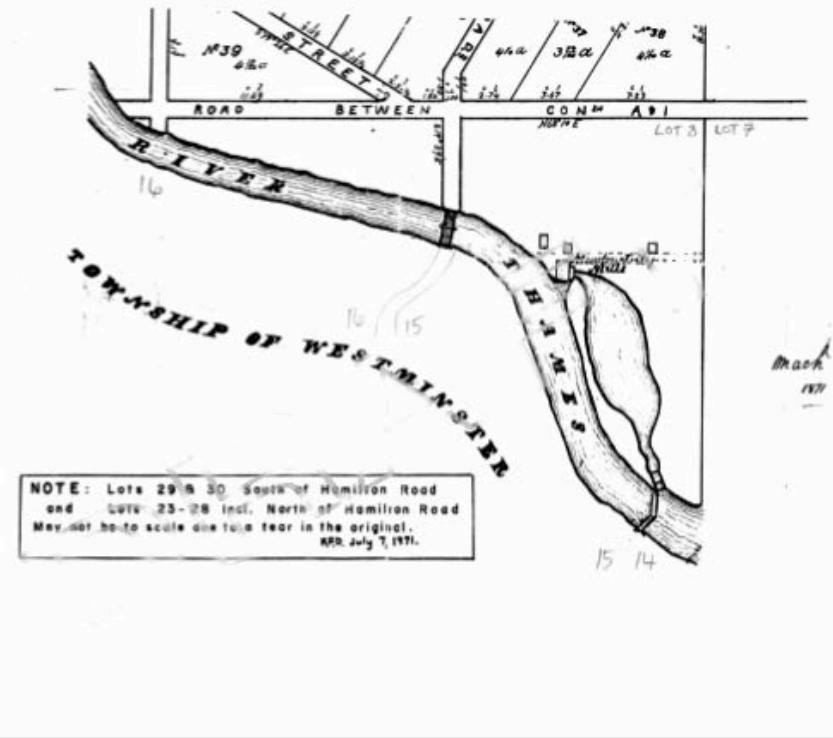
**View of Meadowlily Bridge from the Present
Mill Site, Joe, O'Neil Calendar**

Other Important Aspects of the Mill Area: Dam & Trace



- Elements of the Mill Dam still exist:
Dam, Trace, Meadowlily Island

New and Old Maps of the Mill Area



2010, Chris Andreae map of the mill trace and dam, Edward W. Harris, map, 1871.

Rural, Country Setting in the City



Photos from the Ontario Historic Sites website

“Finally, Park Farm is important as a farm and a country estate. Its historic character would be compromised by large-scale development close to the house and farmstead itself, while the **rural** character of its present surroundings complement the estate.” (Page 97)

Recent Study of the Western Counties Area



Whereas designation as a Heritage Conservation District protects primarily the structures and buildings of the area, the designation of Meadowlily Area as a **Cultural Heritage Landscape** would protect the character of the lands, including the views and vistas that define it's character.

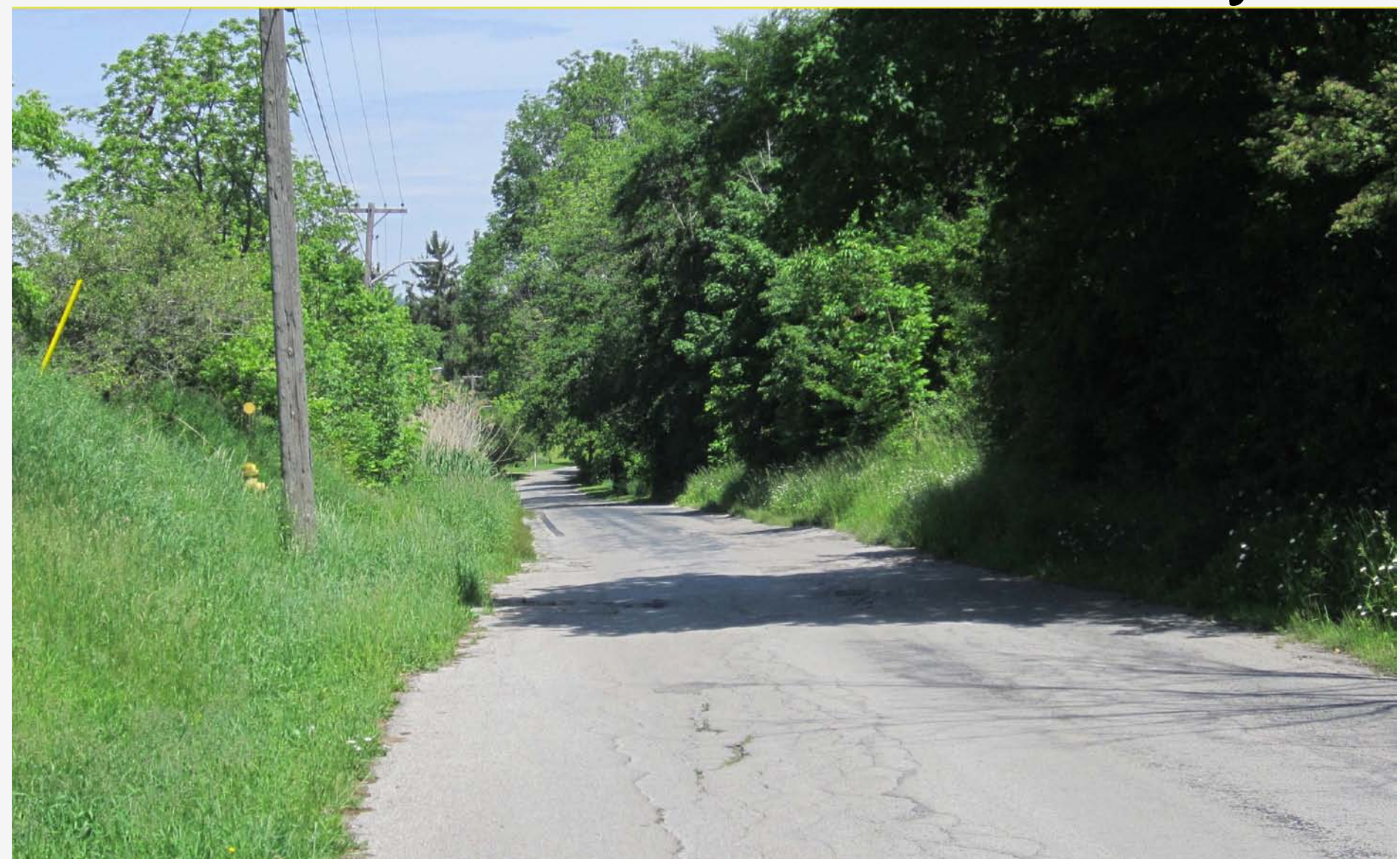
Photo Credits: Alan Bryant, London Room, Delaware-Westminster Histories, Ontario Museum of Archaeology

Views and Vistas of the Meadowlily Area



West side of Meadowlily Rd S looking north

Views and Vistas of Meadowlily, 2



View of Meadowlily Rd S looking north

Views and Vistas of Meadowlily, 3



View of Meadowlily Woods Environmentally Significant Area
looking north to the Thames River Valley

Friends of Meadowlily Woods Community Association Requests that the Meadowlily Area be Designated as a Cultural Heritage Landscape:

Landscape:



- to Preserve and Protect the Rural Landscape
- To Maintain and Restore the unique character of Meadowlily Road South
- To seek heritage designation of the Meadowlily-Plewes Mill Ruins on the North Side of the Thames River.