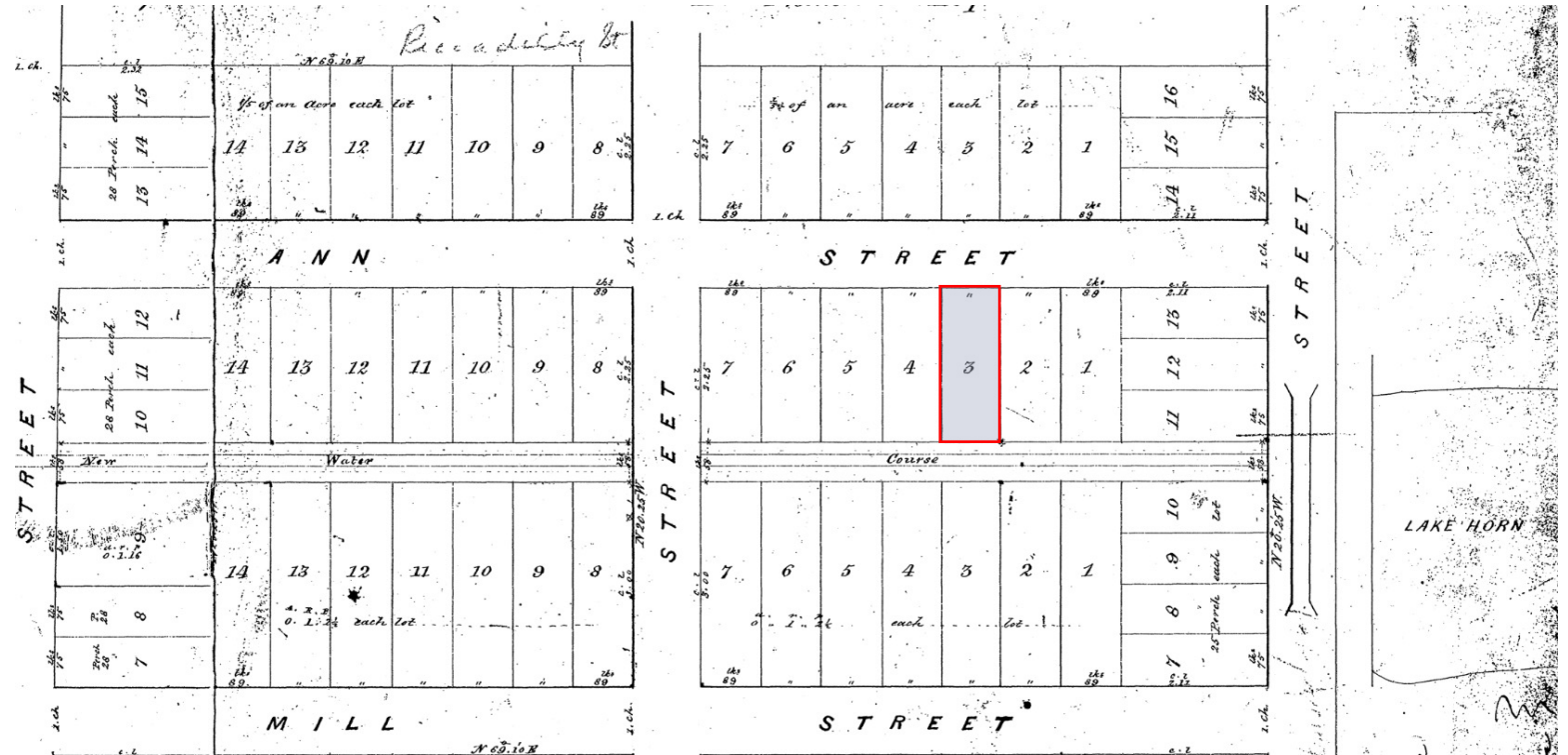


1859

BREWERY ESTABLISHED IN ITS PRESENT LOCATION

Original brewers Marshall
and Hammond on Lot 3
South Side of Ann Street,
Tax Assessment Rolls for
1859



Plan: Detail of RP183(W)

5 MARCH 1861

ALREADY KNOWN AS KENT
BREWERY.

The London Prototype. Reprinted in *Western Ontario
History Nuggets*, No. 13 (1947), London ON: Lawson
Memorial Library, The University of Western Ontario.

“KENT BREWERY. Dundas and Phillips, proprietors Ann street, off Richmond street; formerly the firm of Marshall and Hammond. The brewery has been very successful since its establishment, and there are enlargements and additions being constantly made to it. With the present spirited proprietors, and the large demand for brown stout and amber ale, we have every reason to believe that the Kent Brewery will steadily and successfully progress. Private families and hotel keepers are supplied with the best ales and porter, at the shortest notice, and upon the most reasonable terms.”

SEPTEMBER 1861

ALREADY INCLUDES A
WASH HOUSE.

London and Provincial Exhibition Advertiser,

London C.W., September 1861

IMPORTANT TO BREWERS

TO RENT.

FOR A TERM OF FIVE YEARS, WITH IMMEDIATE
POSSESSION,

THE KENT BREWERY!

SITUATED ON ANN-STREET,

Close to the God-rich Road,

IN THE CITY OF LONDON, C.W.

THE BREWERY AND MALT HOUSE are in excellent condition, the whole having just undergone a thorough repair, with extensive improvements, and is now in working order. The Malt-house is complete, the floors being quite new, and just laid with water lime-cement, and is capable of putting through forty bushels at a time.—The Drying Kiln is almost new. The Fixtures, including Copper Piping, are perfectly new, and in excellent order. A capital Wash House, with extra Copper. The Water of the best quality, with a plentiful supply, and all the Pumps in the best working order.


The Stock can be taken, or not, at the option of the tenant.

To any person desirous of making money, the above is an opportunity rarely to be met with.

Terms easy, and may be known on application to F. L. DUNDAS, on the premises, or to

F. B. BEDDOME,

Agent Buildings, opposite the Bank of
E. N. America, London.



1861

BREWERY
RENTED BY
SCOTTISH
BREWER &
MALTSTER
JOHN
HAMILTON.

KENT
BREWERY!

BEST GENUINE ALE AND PORTER.

Hotels and Families Supplied.

JOHN HAMILTON,

Ann Street, - - London, Ont.

1864

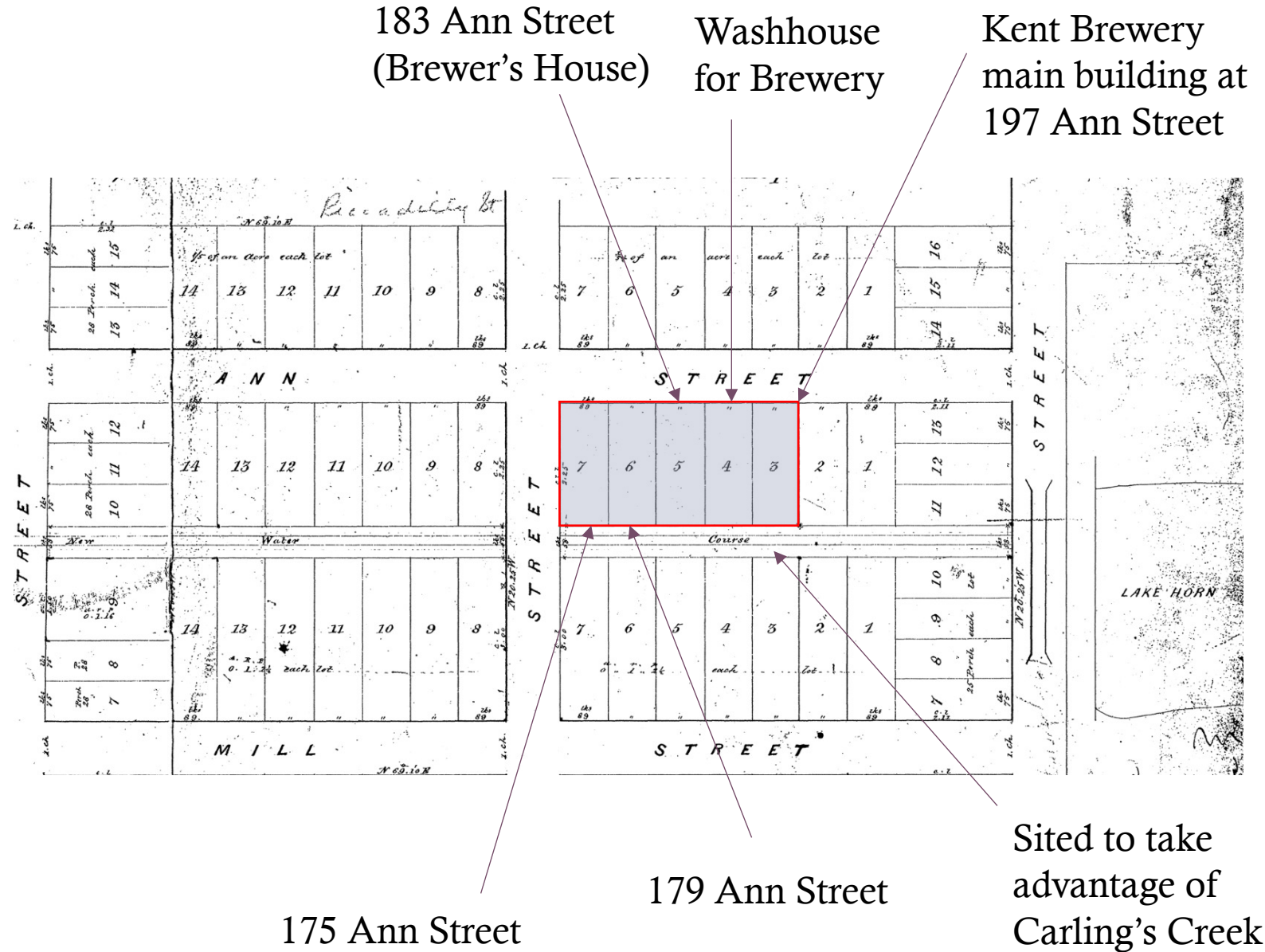
ALREADY
LISTED IN
CANADA
GAZETTEER

“Kent Brewery,
Hamilton & Morgan,
propers., Ann”

1870s

PROSPERITY OF
BREWERY
ALLOWS
FATHER TO
PURCHASE
LOTS 3-7,
SOUTH SIDE OF
ANN STREET.

Land Records Office



1893

SON JOSEPH TRIPLES WORTH
OF BREWERY.
BUILDS BREWER'S HOUSE IN
BUFF BRICK MATCHING
BREWERY.
TANGIBLE EVIDENCE OF HIS
SUCCESS.



BRANDING STRATEGY USING
REGULARLY CHANGING
SLOGANS. HUNDREDS OF
ADS LIKE THESE RAN IN THE
LONDON ADVERTISER FROM
1900–1916.
LAST BEER AD RUNS TWO
DAYS BEFORE TEMPERANCE
DECLARED.

**Hamilton's London
Porter and Amber Ale**

Always in first-class condition.
Brewed from finest foreign and
Canadian hops and malt.

The Kent Brewery
LONDON. ONT.

**Test It as
You Will
Hamilton's Porter.**

Look at it, smell it, taste it; the
result is always the same—you pro-
nounce it good.

There's quality that gives
satisfaction, there's excellence
that makes health, there's
economy and comfort.

Be sure to have some on hand.

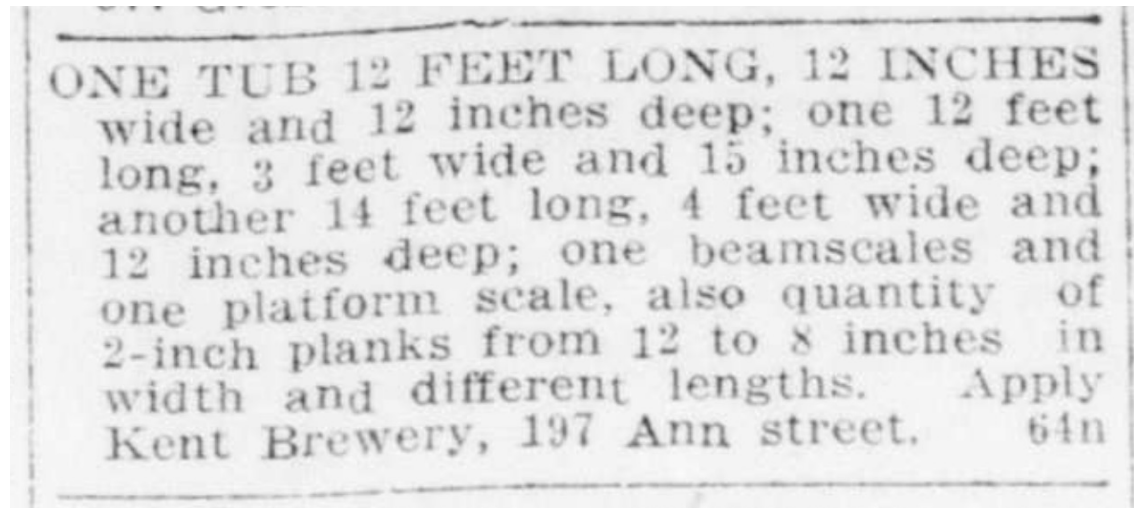
KENT BREWERY,
Jos. Hamilton, Proprietor.

HAMILTON'S
Ale and
Porter

are not excelled. They have been made
for years, and have become superior to
all others. Try from your dealer.

Kent Brewery LONDON
ONT.

BREWERY CLOSES IN SEPTEMBER 1916 DUE TO ONTARIO TEMPERANCE ACT.



ONE TUB 12 FEET LONG, 12 INCHES wide and 12 inches deep; one 12 feet long, 3 feet wide and 15 inches deep; another 14 feet long, 4 feet wide and 12 inches deep; one beamscales and one platform scale, also quantity of 2-inch planks from 12 to 8 inches in width and different lengths. Apply Kent Brewery, 197 Ann street. 64n

First ad selling off Kent Brewery equipment runs in London Advertiser on September 15, 1916, on the day before Ontario Temperance Act is declared on September 16, 1916.

BREWERY FOR SALE A FEW DAYS AFTER TEMPERANCE ACT IS DECLARED

BREWERY PREMISES — SITUATED
197 Ann street, in close proximity to
C. P. R. Railroad. The building is
heated by steam and lighted by elec-
tricity; also has good cement cellars,
and any quantity of spring water on
the premises. Apply the Kent Brew-
ery, 197 Ann street. 71h

London Advertiser, September 25, 1916

PHYSICAL OR DESIGN
VALUE

9/06 CRITERION:
IS A **RARE**, UNIQUE,
REPRESENTATIVE, OR
EARLY EXAMPLE OF A
STYLE, **TYPE**,
EXPRESSION,
MATERIAL, OR
CONSTRUCTION
METHOD.

EARLY

ONE OF THE
OLDEST
BREWERY
BUILDINGS IN
CANADA



**RARE: HAVING A 19TH CENTURY BREWER'S HOUSE
STANDING NEXT TO THE BREWERY LIKELY EXTREMELY
RARE**
