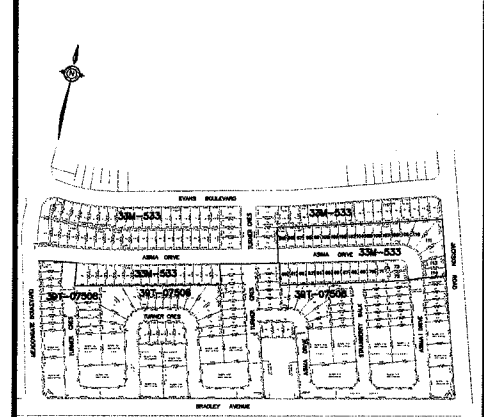


**PROPOSED PART LOT CONTROL**

LOTS 60 TO 72 (INCLUSIVE) & 113, 114  
 REGISTERED PLAN 33M - 533  
 LOTS 13 AND 14, Concession 1  
 Geographic Township of Westminster  
 CITY OF LONDON  
 COUNTY OF MIDDLESEX ASIMA DRIVE



REVISIONS		DATE	BY
4.			
3.			
2.	SUBMISSION TO CITY OF LONDON	May 4 /13	AWA
1.	Revision Resulting from Meeting with City Staff April 24, 2013	May 7 /13	AWA

<p><b>SURVEY INFORMATION:</b></p> <p>By: <b>CALLON DIETZ</b>          Ontario Land Surveyors          Unit 1 - 41 Adelaide St N., London, ON          N6B 3P4 tel. 519-673-0220</p>	<p><b>OWNER:</b></p> <p><b>GREENGATE VILLAGE LIMITED</b>          24 Executive Place          Kitchener, ON N2P 2N4          Tel: 746-2800 Fax: 746-2217</p>
<p>Drawing: <b>PLAN OF SUBDIVISION</b>          Plan 33M - 533          September 26, 2008          File No. 03-13957 A</p>	<p>DATE: March 25, 2013          SCALE: 1:500          DRAWN BY: A.W.A.          DESIGNED BY: A.W.A.          DRAWING NO: Phase 3.dwg</p>

RECEIVED BY

MAY 16 2013

CITY OF LONDON  
DEVELOPMENT SERVICES