

Bill No. 103  
2022

By-law No. C.P.-1512( )-

A by-law to amend The London Plan for the  
City of London, 2016 relating to 3207 Woodhull  
Road.

The Municipal Council of The Corporation of the City of London enacts as follows:

1. Amendment No.\_\_\_\_ to The London Plan for the City of London Planning Area - 2016, as contained in the text attached hereto and forming part of this by-law, is adopted.
2. This by-law shall come into effect in accordance with subsection 17(27) of the *Planning Act, R.S.O. 1990, c.P.13*.

PASSED in Open Council on February 15, 2022.

Ed Holder  
Mayor

Michael Schulthess  
City Clerk

First Reading – February 15, 2022  
Second Reading – February 15, 2022  
Third Reading – February 15, 2022

**AMENDMENT NO.**  
**to the**  
**OFFICIAL PLAN FOR THE CITY OF LONDON**

A. PURPOSE OF THIS AMENDMENT

The purpose of this Amendment to The London Plan for the City of London is to change the designation of a portion of the subject lands from a Farmland Place Type to a Green Space Place Type on Map 1 – Place Types, and to change the identification and delineation of natural heritage features on a portion of the subject lands from a Potential Environmentally Significant Area to an Environmentally Significant Area on Map 5 – Natural Heritage.

B. LOCATION OF THIS AMENDMENT

This Amendment applies to lands located at 3207 Woodhull Road in the City of London.

C. BASIS OF THE AMENDMENT

The recommended amendment is consistent with the PPS and the in force policies of The London Plan, and supports the long-term protection of environmentally significant features.

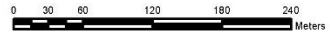
D. THE AMENDMENT

The London Plan for the City of London is hereby amended as follows:

1. Map 1 – Place Types, of The London Plan for the City of London is amended by redesignating a portion of the subject lands, as indicated on “Schedule 1” attached hereto from a Farmland Place Type to a Green Space Place Type.
2. Map 5 – Natural Heritage, of The London Plan for the City of London is amended by changing the identification and delineation of natural heritage features on a portion of the subject lands, as indicated on “Schedule 2” attached hereto from a Potential Environmentally Significant Area to an Environmentally Significant Area.

**LONDON PLAN AMENDMENT**  
No. \_\_\_\_

**LOCATION MAP**



Prepared on Dec 28, 2021 by:  
GIS Planning & Development  
Comparison of this Site on Screen  
based on April 2018 Right of Way  
File: plannr\gprj\cbp\_cfr\10\_cctamraps



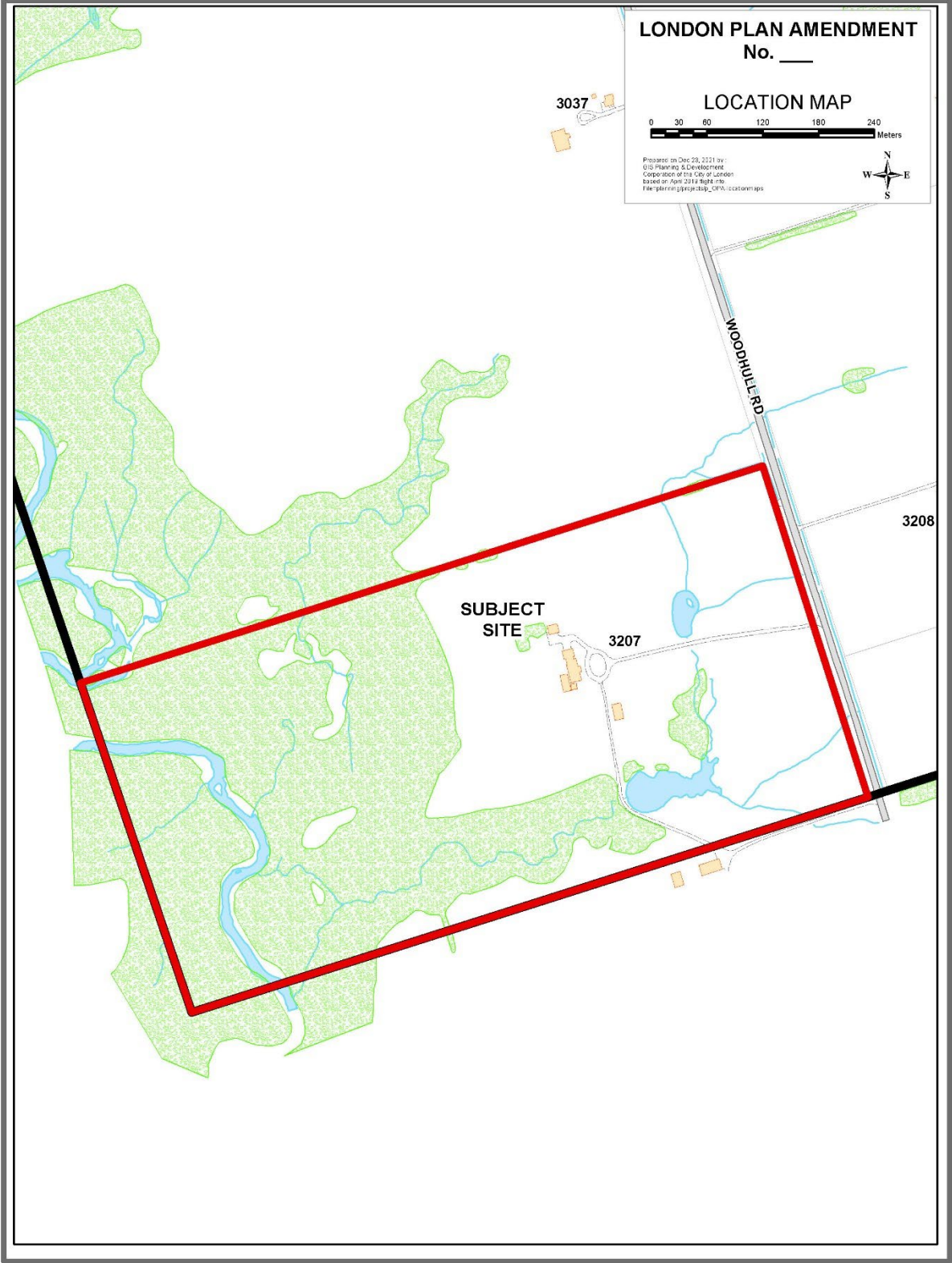
3037

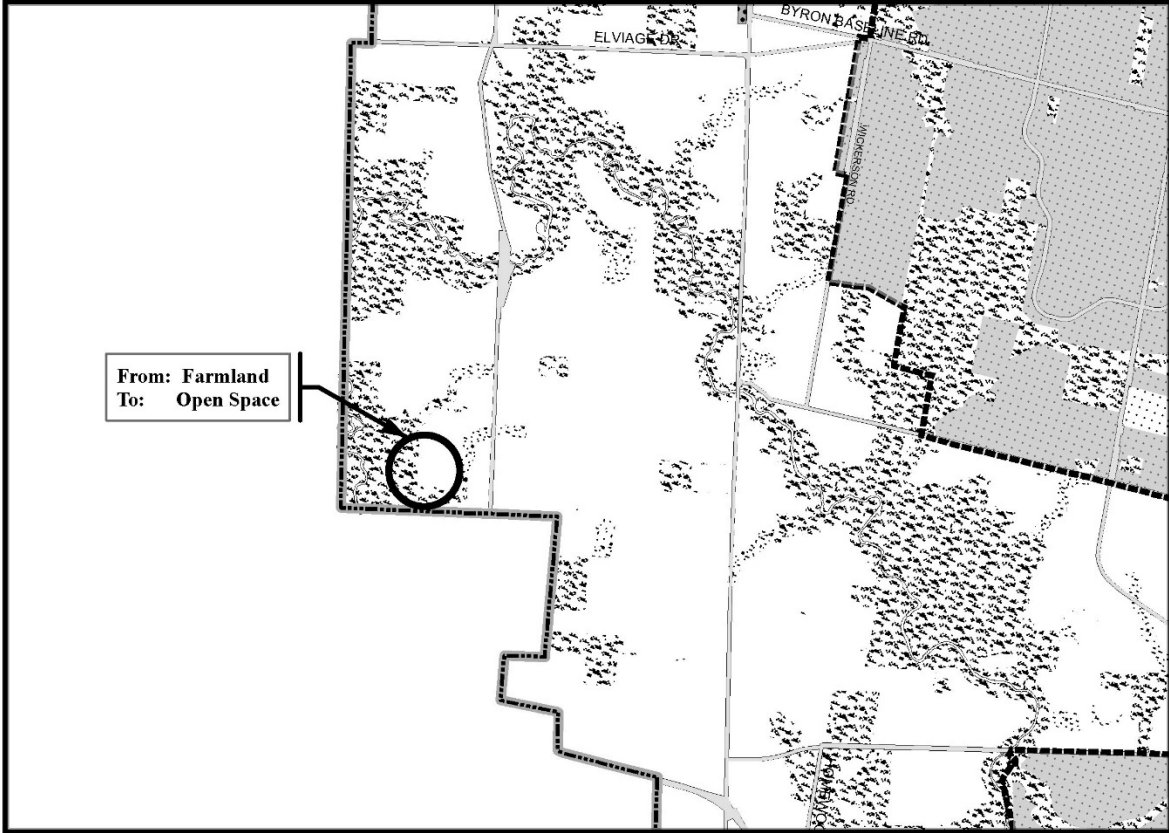
WODHULE RD

3208

**SUBJECT  
SITE**

3207





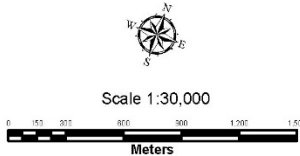
**Legend**

Downtown	Future Community Growth	Environmental Review
Transit Village	Heavy Industrial	Farmland
Shopping Area	Light Industrial	Rural Neighbourhood
Rapid Transit Corridor	Future Industrial Growth	Waste Management Resource Recovery Area
Urban Corridor	Commercial Industrial	Urban Growth Boundary
Main Street	Institutional	Areas Withheld from LPAT Approval
Neighbourhood	Green Space	

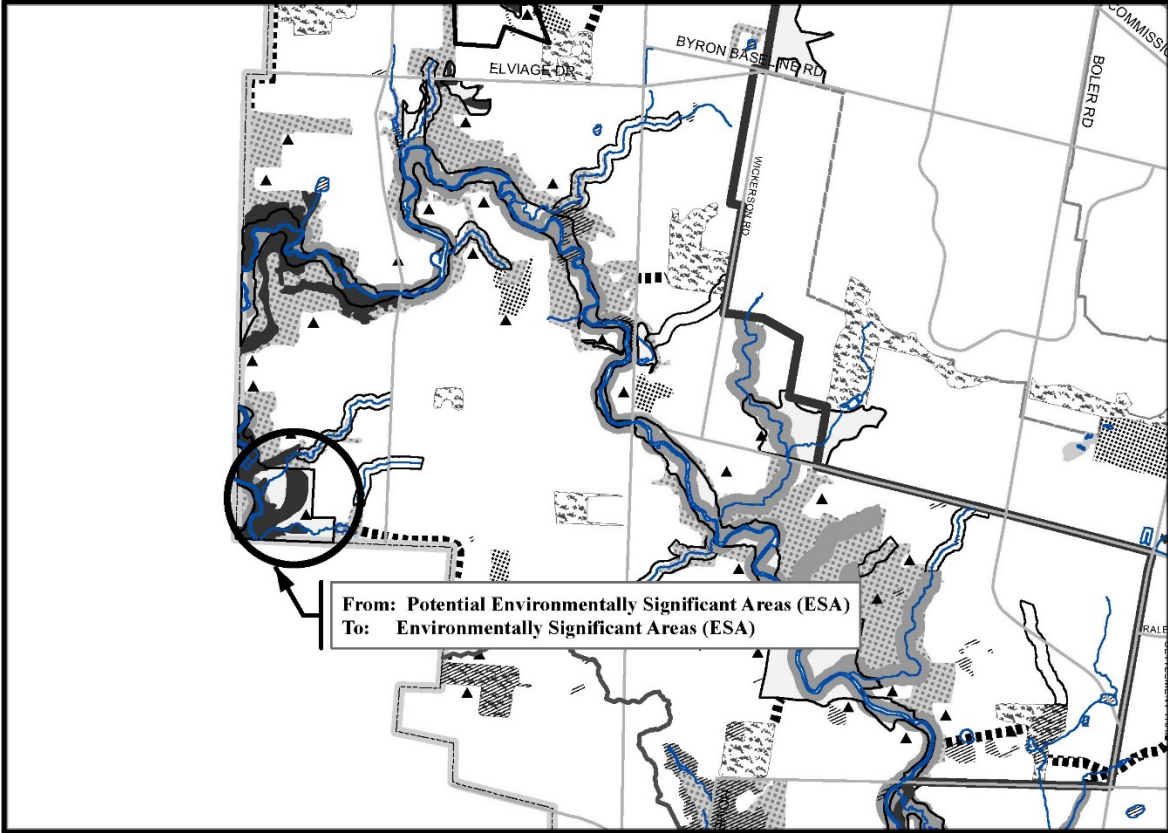
*This is an excerpt from the Planning Division's working consolidation of Map 1 - Place Types of the London Plan, with added notations.  
At the time of the printing of this map, the Rapid Transit EA is in progress. This map shows the Rapid Transit Corridors and Urban Corridors to recognize potential alignments. These Place Types will be modified to align with the results of the EA process for the final version of The London Plan.*

**SCHEDULE 1  
TO  
THE LONDON PLAN**  
AMENDMENT NO. \_\_\_\_\_

PREPARED BY: Planning Services



**FILE NUMBER:** O-9429/Z-9430  
**PLANNER:** BD  
**TECHNICIAN:** RC  
**DATE:** 12/23/2021



**NATURAL HERITAGE SYSTEM**

- Provincially Significant Wetlands
- Wetlands
- Unevaluated Wetlands
- Significant Woodlands
- Woodlands
- Significant Valley Lands
- Valley Lands

- Areas of Natural and Scientific Interest
- Environmentally Significant Areas (ESA)
- Potential ESAs
- Upland Corridors
- Potential Naturalization Areas
- Unevaluated Vegetation Patches

**Base Map Features**

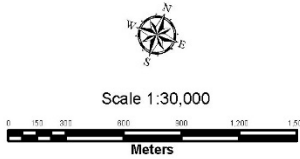
- Railways
- Water Courses/Ponds
- Streets (see Map 3)
- Conservation Authority Boundary
- Subwatershed Boundary
- Subject to Site Specific Appeals (LPAT Appeal PL170100)

*This is an excerpt from the Planning Division's working consolidation of Map 5 - Natural Heritage of the London Plan, with added notations.*

**SCHEDULE 2  
TO  
THE LONDON PLAN**

AMENDMENT NO. \_\_\_\_\_

PREPARED BY: Planning Services



FILE NUMBER: O-9429/Z-9430

PLANNER: BD

TECHNICIAN: RC

DATE: 1/4/2022