

--	--

TO:	CHAIR AND MEMBERS CIVIC WORKS COMMITTEE MEETING ON JUNE 17, 2013
FROM:	EDWARD SOLDI, P. ENG. DIRECTOR, ROADS AND TRANSPORTATION
SUBJECT:	WONDERLAND ROAD SOUTH ENVIRONMENTAL ASSESSMENT STUDY APPOINTMENT OF CONSULTING ENGINEER

RECOMMENDATION

That on the recommendation of the Director, Roads and Transportation, the following actions **BE TAKEN** with respect to the appointment of a consultant for the Wonderland Road South Environmental Assessment (EA):

- a) McCormick Rankin Corporation, 2655 North Sheridan Way, Mississauga, Ontario, L5K 2P8, **BE APPOINTED** Consulting Engineers to complete the Environmental Assessment Study for Wonderland Road South, in the amount of \$439,567 excluding HST, and including a 10% contingency, in accordance with Section 15.2 (d) of the Procurement of Goods and Services Policy;
- b) the financing for this project **BE APPROVED** as set out in the Source of Financing Report attached hereto as Appendix 'A';
- c) the consulting fee for the project identified in (a), above, which is in accordance with the estimate on file, and which is based upon the Fee Guideline for Professional Engineering Services recommended by the Ontario Society of Professional Engineers **BE APPROVED**;
- d) the Civic Administration **BE AUTHORIZED** to undertake all the administrative acts that are necessary in connection with this project;
- e) the approvals given herein **BE CONDITIONAL** upon the Corporation entering into a formal contract with the consultant for the work; and
- f) the Mayor and City Clerk **BE AUTHORIZED** to execute any contract or other documents, if required, to give effect to these recommendations.

PREVIOUS REPORTS PERTINENT TO THIS MATTER
--

- Civic Works Committee - April 23, 2012 - Highway 401/Wonderland Road Interchange Provincial Class Environmental Assessment
- Civic Works Committee - June 19, 2012: London 2030 Transportation Master Plan
- Strategic Priorities and Policy Committee - December 4, 2012; Growth Management Implementation Strategy (GMIS): 2013 Annual Update and Review
- Civic Works Committee – February 4, 2013 – Highway 401 Interchange Projects - Agreement with Ministry of Transportation

BACKGROUND

Purpose

This report seeks the approval of the Council to retain an engineering consultant to undertake the Wonderland Road South Environmental Assessment (EA) study from north of the proposed interchange of Wonderland Road South and Highway 401 to Southdale Road.

--	--

Context

This Environmental Assessment is required in order to proceed with the implementation strategy of the Southwest Area Plan (SWAP) and to identify the transportation infrastructure needs for the Wonderland Road South corridor as recommended in the London 2030 Transportation Master Plan (TMP).

The establishment of the right of way land requirements is a key outcome in order to deal with the short and long term anticipated development proposals along the subject corridor and for the protection of the future widening of Wonderland Road.

The need and justification for the study was identified through the London 2030 TMP as a result of future traffic capacity deficiencies. The EA will identify the transportation infrastructure needs while balancing the requirements of the full range of potential users within the community including users of all ages and abilities, pedestrians, cyclists, goods movement, transit vehicles and motorists.

The completion of the Wonderland Road South interchange with Highway 401 is one of key objectives of London's Economic Strategy in establishing the City as the trade and transportation hub of Southwestern Ontario. The improvements along Wonderland Road South, in conjunction with the interchange, will allow for future industrial development and enable residential and commercial growth in the SWAP area.

DISCUSSION

Project Description

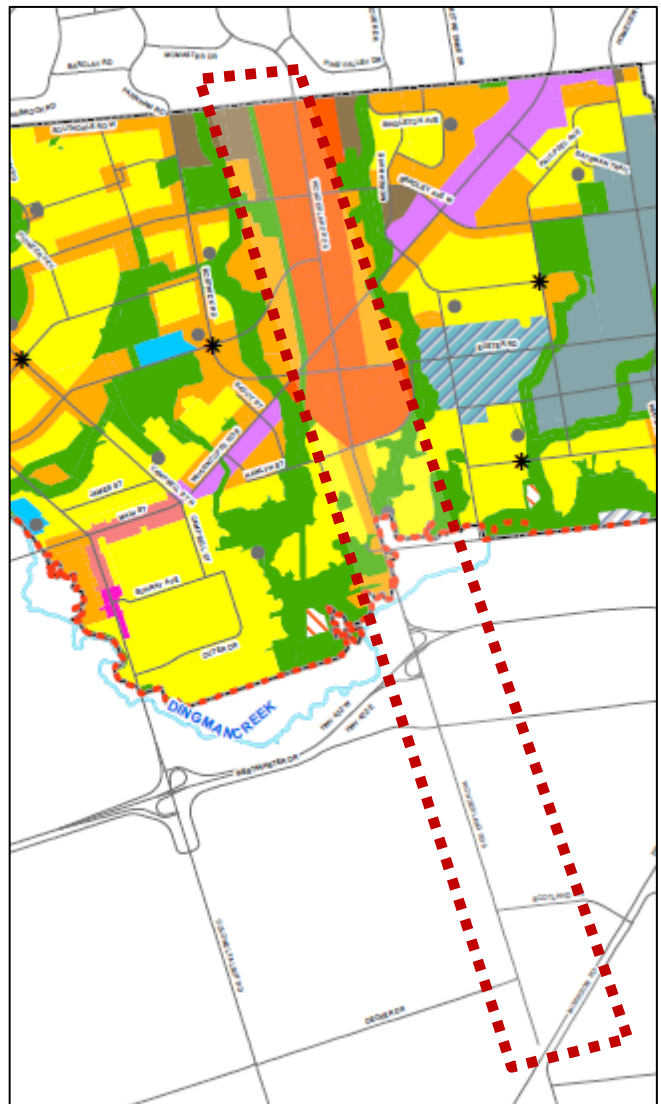
The London 2030 TMP identified Wonderland Road as a high capacity auto/goods movement north/south corridor and a continuous “Grand Boulevard” connection between Fanshawe Park Road and Highway 401.

This section of Wonderland Road is considered a primary gateway to central London from the 400 series highways. The roadway is envisioned to be developed with a unique road cross section that will fulfill two primary functions:

- Serve as a major transportation arterial roadway designed to carry high volumes of traffic in a safe and efficient manner; and;
- Provide an attractive and memorable experience for those entering and leaving the City.

The primary deliverables from this environmental assessment include:

- The determination of the appropriate right-of-way and property requirements to accommodate the future widening of Wonderland Road South as per the London 2030 TMP;
- Recommend the appropriate geometric design concept and future improvements for intersections and interchanges



--	--

associated with the widening of Wonderland Road to mitigate future deficiencies, accommodate increased traffic demand, and improve safety;

- Develop an interim preferred plan for 2-lane improvements to the corridor from Highway 401 to Highway 402 assuming an enhanced “gateway” standard;
- Develop functional and visually attractive urban design concept for vehicular travel lanes, bike lanes, pathways, and sidewalks to appropriately accommodate the speed and safety of travel for motorists, cyclists and pedestrians;
- Undertake and document a scoped Environmental Impact Study (EIS);
- Undertake a storm/drainage and SWM assessment of the impacts associated with the proposed project; and
- Document in a clear and transparent manner the process undertaken and provide formal documentation and presentations.

Consultant Selection

Four consulting firms were invited to submit proposals for this project. Three firms responded with written proposals including a summary of the project tasks, schedule, and costs. An evaluation committee with representation from all key project areas including Transportation, Stormwater Management, and Planning and Development reviewed the consultant submissions for the project.

Based on the evaluation criteria and selection process identified in the Request for Proposals, the evaluation committee concluded that the proposal from McCormick Rankin Corporation provides the best value to the City.

McCormick Rankin Corporation has an experienced project team that had a clear understanding of the project scope and requirements. Their past proven experience on similar projects of this nature combined with a project proposal that demonstrated a thorough understanding of the goals and objectives demonstrated their suitability for the undertaking. McCormick Rankin is familiar with City staff and procedures through recent work on the Veterans Memorial Parkway Extension EA.

Study Financing

Administration is creating a new capital project account for this environmental assessment. The funding source is a transfer of surplus funding from TS1156 Wonderland Road Widening, a project that is almost complete and has surplus funding that can support this current project.

It should be noted that prior to the completion of the Southwest Area Secondary Plan and the recent approved London 2030 TMP, the need for undertaking the Wonderland Road EA was not anticipated within the 20-year development charges timeframe. The EA for this portion of Wonderland Road was triggered by the final Southwest Area Secondary Plan which included an extension of the “Wonderland Road Community Enterprise Corridor” beyond Exeter Road and the revised timing of the Wonderland Road interchange construction. This project will be introduced in the 2014 Development Charges Background Study currently in development as recommended in the London 2030 TMP.

CONCLUSION

The need for this Environmental Assessment has been identified as a result of future traffic capacity deficiencies. The study recommendations will set the directions for City staff to proceed with the implementation strategy of SWAP based on the identified transportation infrastructure needs for the Wonderland Road South corridor.

Recommendation

Based on the technical evaluation of the proposals, it is recommended McCormick Rankin Corporation be awarded the consulting assignment for the Wonderland Road South Environmental Assessment study at an upset amount of \$439,567 excluding HST, and including a 10% contingency.

--	--

Acknowledgements

This report was prepared within the Transportation Planning and Design Division by Maged Elmadhoon; Manager, Transportation Planning.

SUBMITTED BY:	RECOMMENDED BY:
DOUG MACRAE, P.ENG. DIVISION MANAGER TRANSPORTATION, PLANNING & DESIGN	EDWARD SOLDI, P.ENG. DIRECTOR, ROADS AND TRANSPORTATION
REVIEWED & CONCURRED BY:	
JOHN BRAAM, P.ENG. MANAGING DIRECTOR, ENVIRONMENTAL & ENGINEERING SERVICES & CITY ENGINEER	

\\estr\Shared\Administration\COMMITTEE REPORTS\Civic Works\2013\DRAFT\06 17\CWC-June 17 2013-EA Study of Wonderland RD S-FINAL.docx

Attach: Appendix "A" – Sources of Financing

cc. Michael Chiu, P.Eng.; McCormick Rankin