

Child Care Advisory Committee and Licensed Child Care Network Proposal

December 22, 2021

Dear Michael and Barb,

Thank you for the opportunity to provide feedback regarding the Child Care Advisory Committee (CCAC). As you know, the past almost 2 years has been incredibly challenging for everyone. The Pandemic has made the issues affecting licensed child care more apparent than ever. The past few months have certainly been a journey unlike anything we have ever experienced.

Julie Keens, Vice-Chair and I have recently reflected on the mandate and composition of CCAC. We understand that there has been a review process of Advisory Committees and that changes are being proposed. It is important that we provide this feedback in advance of us both stepping down from our positions as Chair and Vice-Chair. We apologize if this input is being provided later than requested. We have been focused on the pandemic and its ever-changing adaptations in our own organizations and our community work has been focused at the Licensed Child Care Network (LCCN) table. I am also co-chair of LCCN. Julie and I are active participants on the Advocacy and/or Marketing sub-committees of LCCN.

We have identified that there is overlap between CCAC and the LCCN in both composition and mandate/goals. We have also identified that LCCN has a broader composition, mandate and reach and that with minimal adaptations, LCCN could adopt any unique roles of CCAC. We are proposing, for this reason, that there could be consideration for dissolving CCAC. The following provides further information regarding LCCN and outlines the breadth of the work taking place.

Licensed Child Care Network (LCCN)

Licensed Child Care Network (LCCN) is a passionate group of licensed Child Care and Early Years leaders from non-profit and for-profit organizations in London and Middlesex. LCCN members work together to mentor and support one another, develop meaningful connections, share best-practices, and collaboratively take action. Over the past almost 2 years, during the pandemic, it has been more important than ever for child care operators and leaders to come together as part of a larger community. The Licensed Child Care Network of London and Middlesex has provided a place for:

- Information sharing
- Support and well-being
- Collaborative planning and action

Our Vision:

A community that understands, promotes and champions early learning and Child Care. We work to achieve this through:

- promoting, advocating, and marketing early learning and licensed Child Care;
- raising public awareness about the importance of early learning and Child Care;
- providing information for families about the range of services available and how to choose quality early learning and Child Care experiences;
- developing strategies to recruit and retain qualified professionals;

- building relationships with committees and groups that have congruous missions.

LCCN offers a welcoming and collaborative space for licensed Child Care operators and early years professionals to share in accomplishments, challenges, advocacy, and networking;

LCCN has built relationships, communicates and works with various community partners. Regular and active participants at LCCN meetings include City and County Managers, representatives from the Middlesex London Health Unit (MLHU), All Kids Belong, Strive and Fanshawe College.

LCCN acts as a resource to elected officials as we support the development of a National Child Care System in Canada and the Ontario specific plan. Our LCCN Advocacy Sub-Committee has been meeting weekly, including virtual roundtable meetings with Federal, Provincial and Municipal representatives. On Thursday, August 19, 2021, we were joined by City of London Ward 5 and Ward 9 Councillors, Anna Hopkins and Maureen Cassidy. This interactive forum gave us the opportunity to discuss the National Child Care plan and share the ways we are advocating for Ontario's plan, and we shared our challenges including those of recruitment and retention of Registered Early Childhood Educators. This positive opportunity has inspired our Advocacy group to continue these conversations with other ward councillors.

LCCN in collaboration with their community partners has collaborated on multiple projects including:

- A 2019 Marketing Campaign to address Recruitment and Retention- including a Cineplex Advertisement, Bus Shelter Ads, Social Media Campaign and a website unsungheroesece.com
- #IAmEssential Campaign- a campaign to recognize and thank all child care professionals in our region for their enormous efforts and contributions during the Covid-19 pandemic and beyond.
- Virtual Early Years Town Hall 2020- a meaningful conversation with elected representatives from municipal, provincial and federal governments. The reality of the early childhood education, the challenges faced including those resulting from Covid-19 and our vision for the future for children, families, educators and the community were discussed.
- Virtual Early Years Town Hall 2021- On November 24, 2021- focused on the question "What if you could invest in one thing that, on its own, could create a wave of positive change in systems that affect us all?" That one thing is child care. An important and engaging panel discussion explored the significant impact of child care both here in London and across Canada. A local parent, employer, child care Executive Director, Registered Early Childhood Educator, and an ECE student made up the panel and came together for a thought-provoking discussion as we seek to answer the question, "Why does child care matter, and why should it matter to me?" This event was attended by multiple elected officials, representatives from the Ontario Municipal Social Services Association, other Advocacy Leaders, educators and families.
- Working with the London Community Recovery Network- resulted in Mayor Ed Holder's Letter of Support for a National Child Care Program on behalf of the City of London.

The following charts aim to outline areas of composition and mandate overlap, the broader reach of LCCN particularly with elected officials and opportunities for LCCN to adapt.

Thank you again for the opportunity to provide feedback. Please let us know if you have questions.

Diane Gordon, Chair CCAC, cc Julie Keens, Vice-Chair CCAC

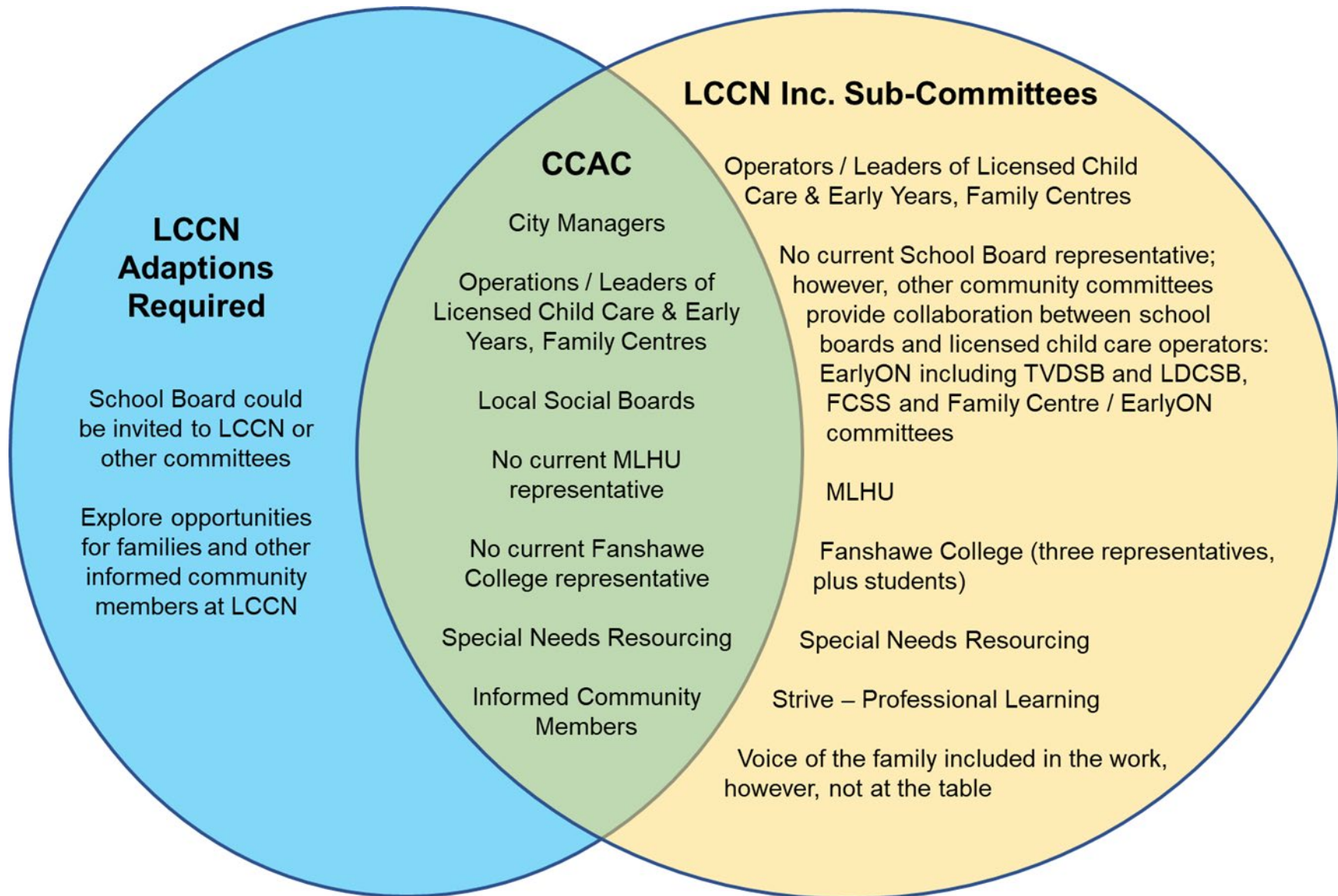
	CCAC	LCCN inc. sub-committees	LCCN Adaptations Needed
Composition	<p>City Managers</p> <p>Operators/ leaders of Licensed Child Care programs from infancy through 12 years & EarlyON Child and Family Centres, including representation from the French language, Indigenous led and Licensed Home Child Care</p> <p>Local School Boards</p> <p>No current MLHU rep</p> <p>No current Fanshawe College rep</p> <p>Special Needs Resourcing</p> <p>Informed Community Members</p>	<p>City & County Managers</p> <p>Operators/ leaders of Licensed Child Care programs from infancy through 12 years & EarlyON Child and Family Centres, including representation from the French language, Indigenous led and Licensed Home Child Care</p> <p>No current School Board rep- however other community committees provide collaboration between school boards and licensed child care operators/ EarlyON including Thames Valley District School Board (TVDSB) and London District Catholic School Board (LDCSB) and through the Family Centred Service System including Family Centre/ EarlyON Committees</p> <p>MLHU</p> <p>Fanshawe College (3 reps plus students)</p> <p>Special Needs Resourcing</p> <p>Strive- Professional Learning</p> <p>Voice of the family included in the work and campaigns however not at the table</p>	<p>School Board could be invited to attend LCCN, provide written reports or through other community committees</p> <p>Explore opportunities for families and other informed community members at LCCN</p>

	CCAC	LCCN inc. sub-committees	LCCN Adaptations Needed
Mandates/ Goals/ Strategies	<p data-bbox="382 232 653 264">Special Needs Funding</p> <p data-bbox="382 410 554 475">Wage Subsidy Fee Subsidy</p> <p data-bbox="382 621 596 654">Health and Safety</p>	<p data-bbox="842 232 1499 334">Special Needs Resourcing Manager of All Kids Belong is an active participant and provides report on funding and programming</p> <p data-bbox="842 410 1507 513">City/ County managers provide updates and guidance on all funding streams- participants have opportunity to ask questions</p> <p data-bbox="842 589 1486 724">Middlesex-London Health Unit reps at all meetings- discuss new health and safety requirements including COVID protocols- participants have opportunity to ask questions</p> <p data-bbox="842 768 1308 800">Advocacy with all levels of government</p> <p data-bbox="842 837 1493 902">Marketing and promoting licensed child care and early years and recruitment and retention</p> <p data-bbox="842 946 1472 1011">Providing information for families about the range of services</p> <p data-bbox="842 1049 1234 1081">Mentoring & Support for leaders</p>	

	CCAC	LCCN inc. sub-committees	LCCA Adaptations Needed
Elected Officials	<p>Provide recommendations, advice and information to the Municipal council on matters relating to purpose</p> <p>Provide written reports from the various community partners as part of CCAC minutes</p> <p>No direct communication with councillors except through “Adopt a Councillor”</p>	<p>Acts as resource to elected official of all 3 levels of government; Municipal, Provincial & Federal</p> <p>Opportunities for open dialogue, roundtables, Town Halls with all levels of government including city councillors</p> <p>Active partner with CCAC in “Adopt a Councillor”</p>	LCCN take leadership of “Adopt a Councillor”

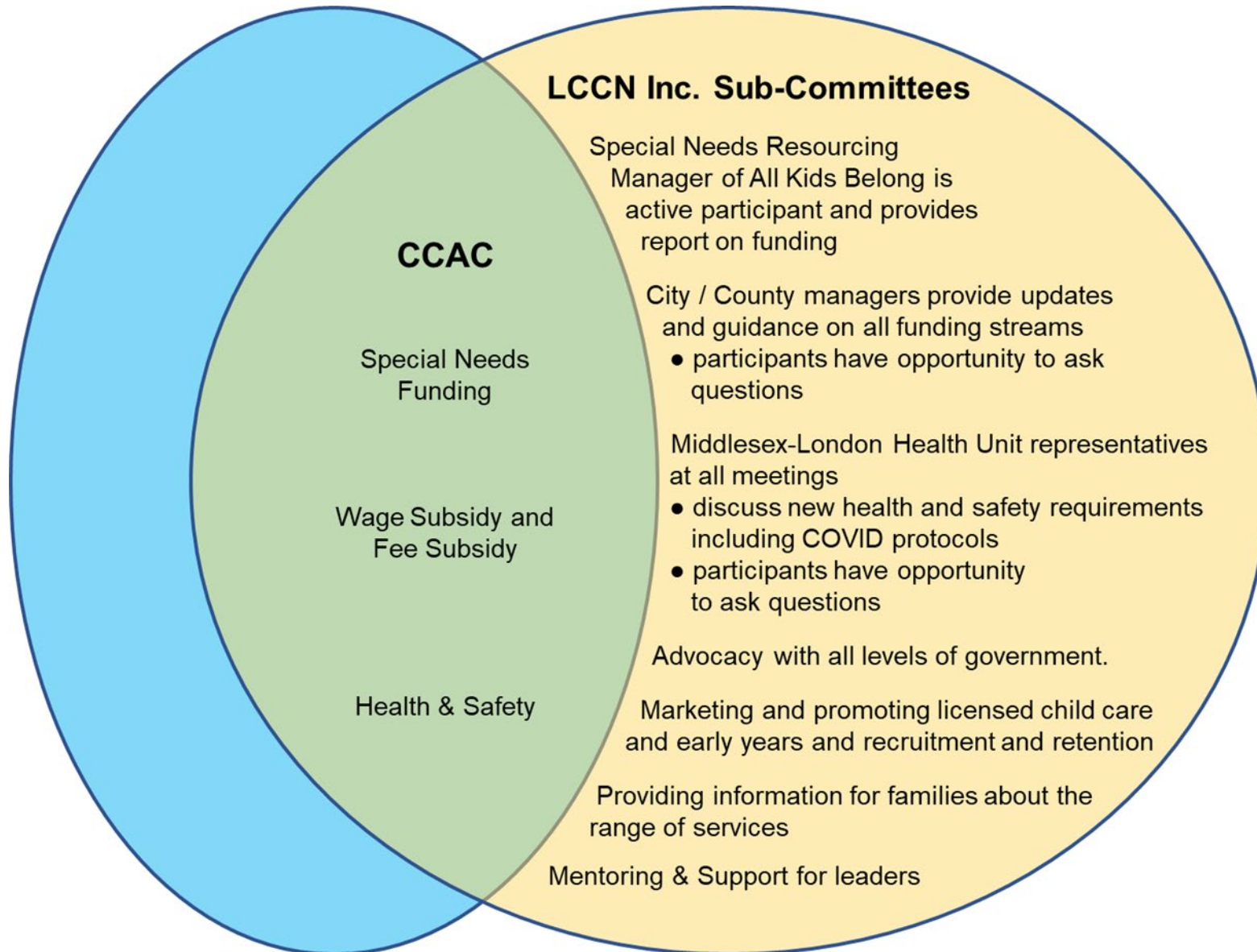
CHILD CARE ADVISORY & LICENSED CHILD CARE NETWORK

COMPOSITION



CHILD CARE ADVISORY & LICENSED CHILD CARE NETWORK

MANDATE



CHILD CARE ADVISORY & LICENSED CHILD CARE NETWORK

ELECTED OFFICIALS

