



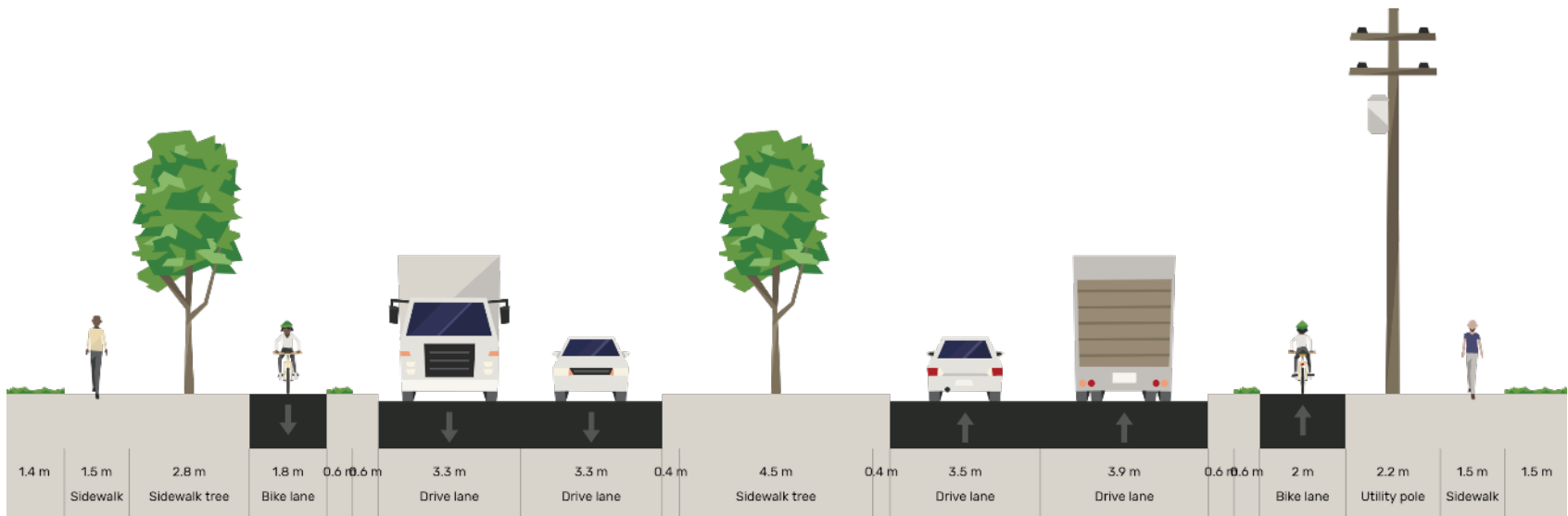
Preliminary Design Briefs: Bradley, Central & Queens



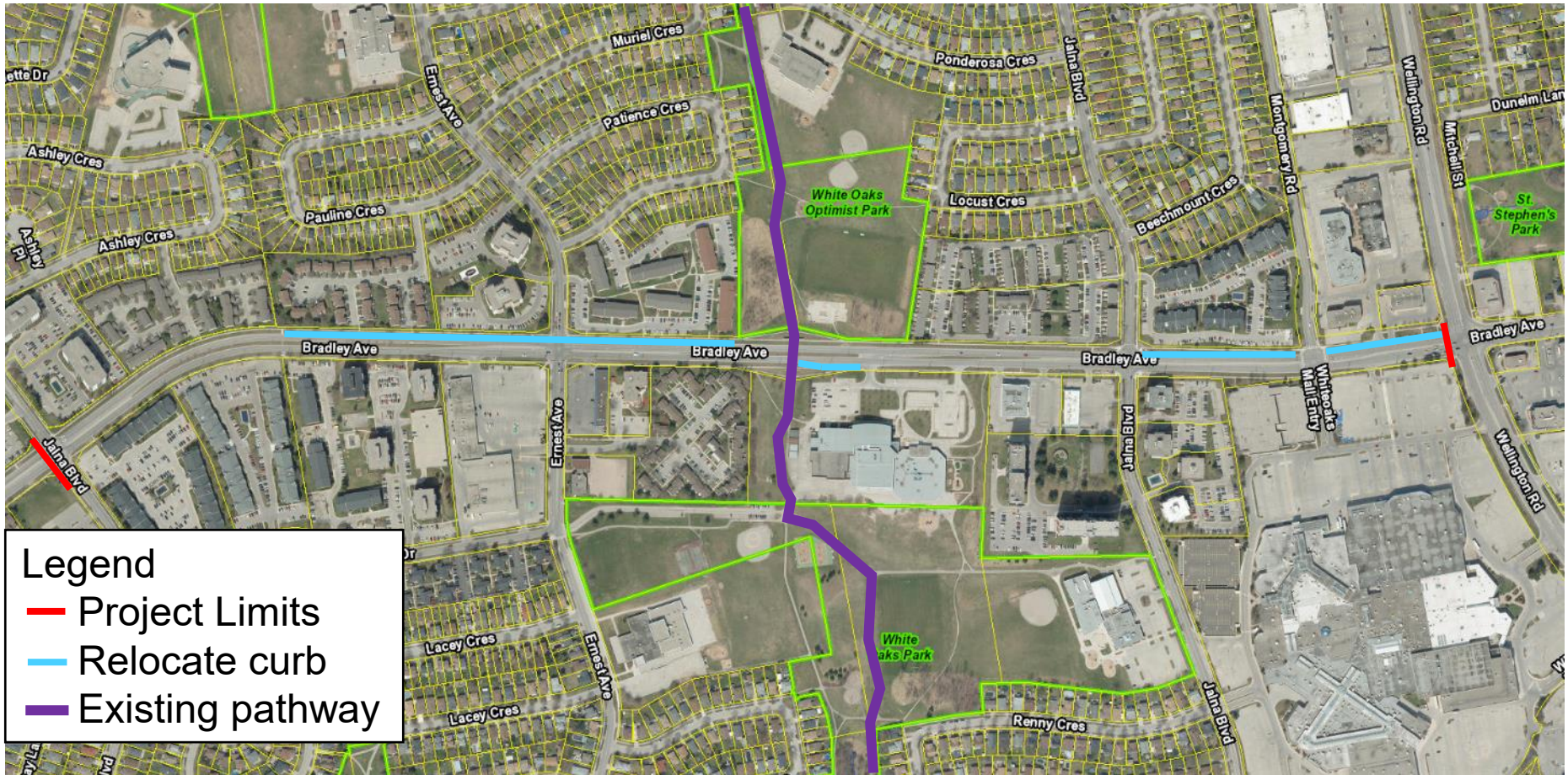
Cycling Advisory Committee
December 15th, 2021

Bradley

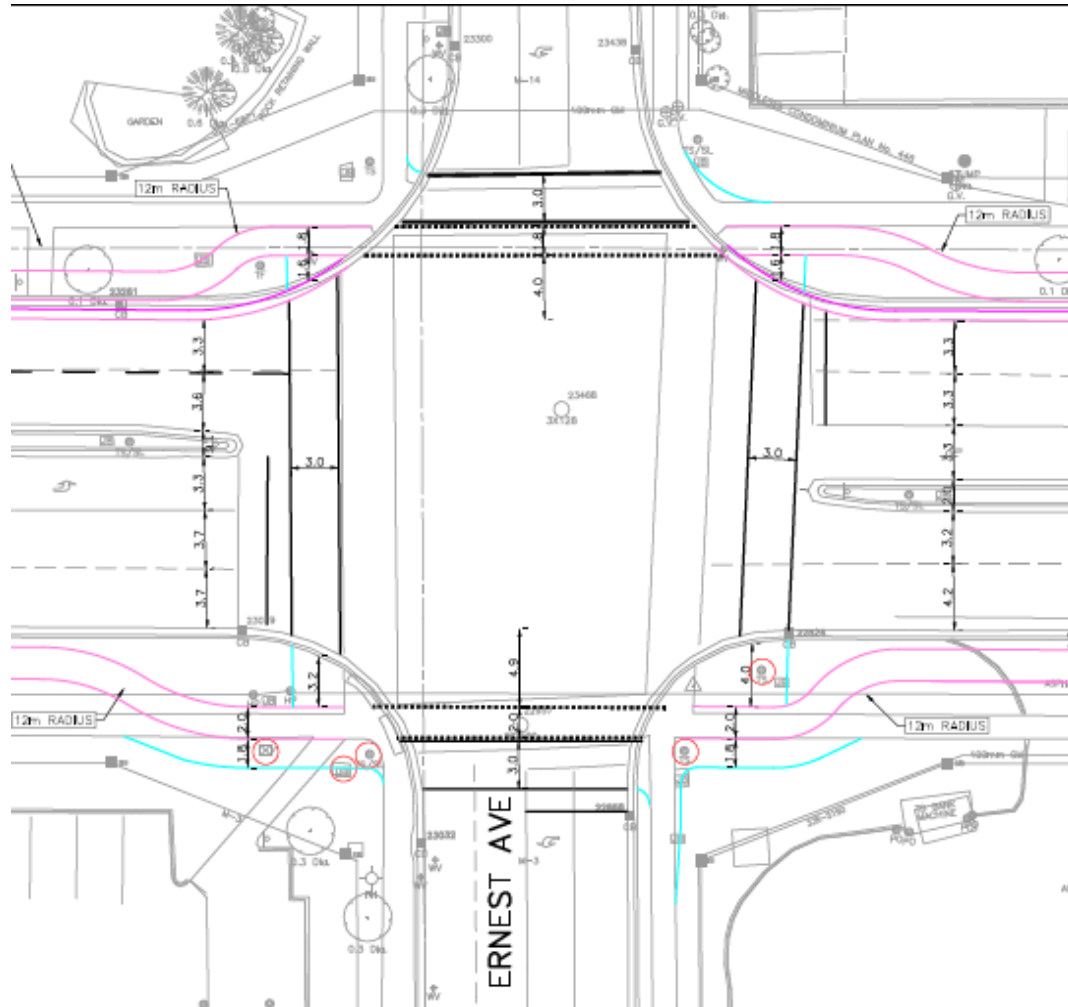
- Between Jalna West Leg and Wellington
- Design attempts to minimize tree impacts
- Cycle tracks in the boulevard is preferred cycling facility



Map of area



Typical Bradley Intersection



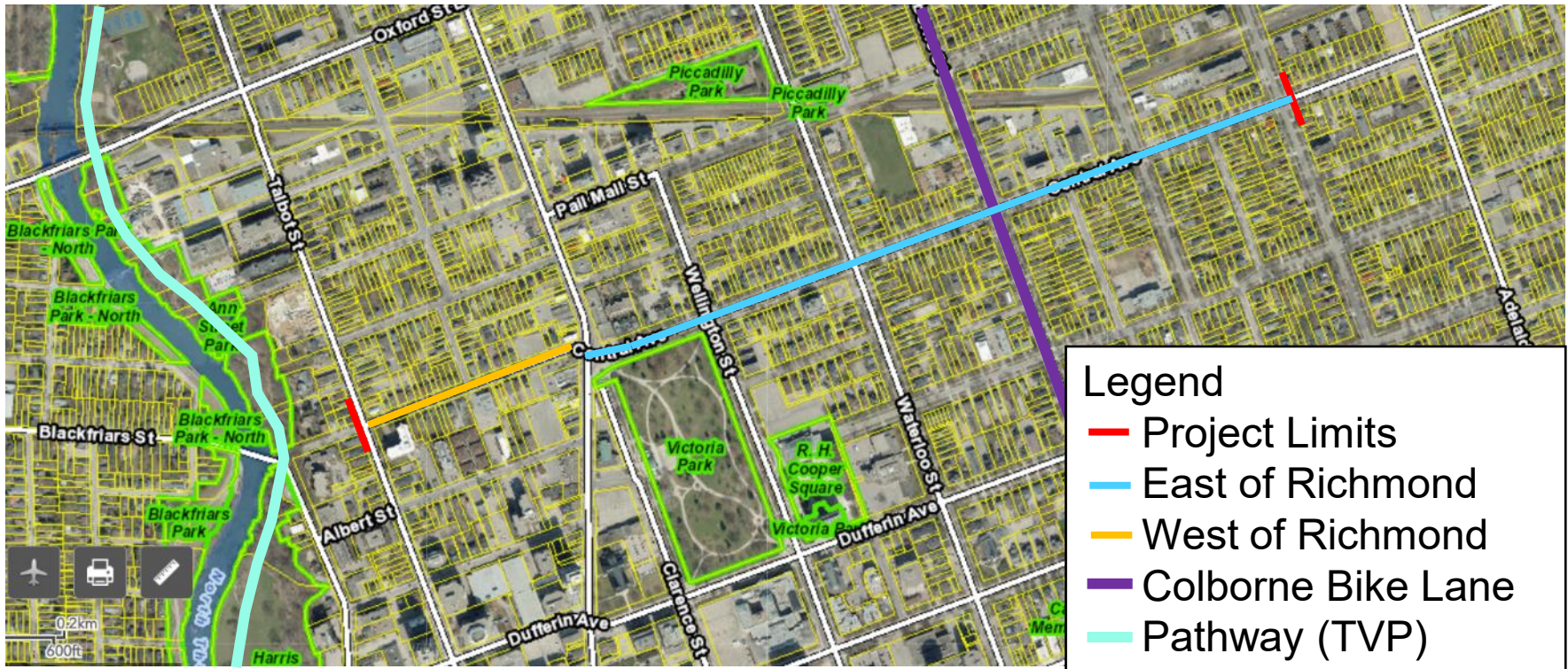


Bradley Ave

- Questions, comments, feedback

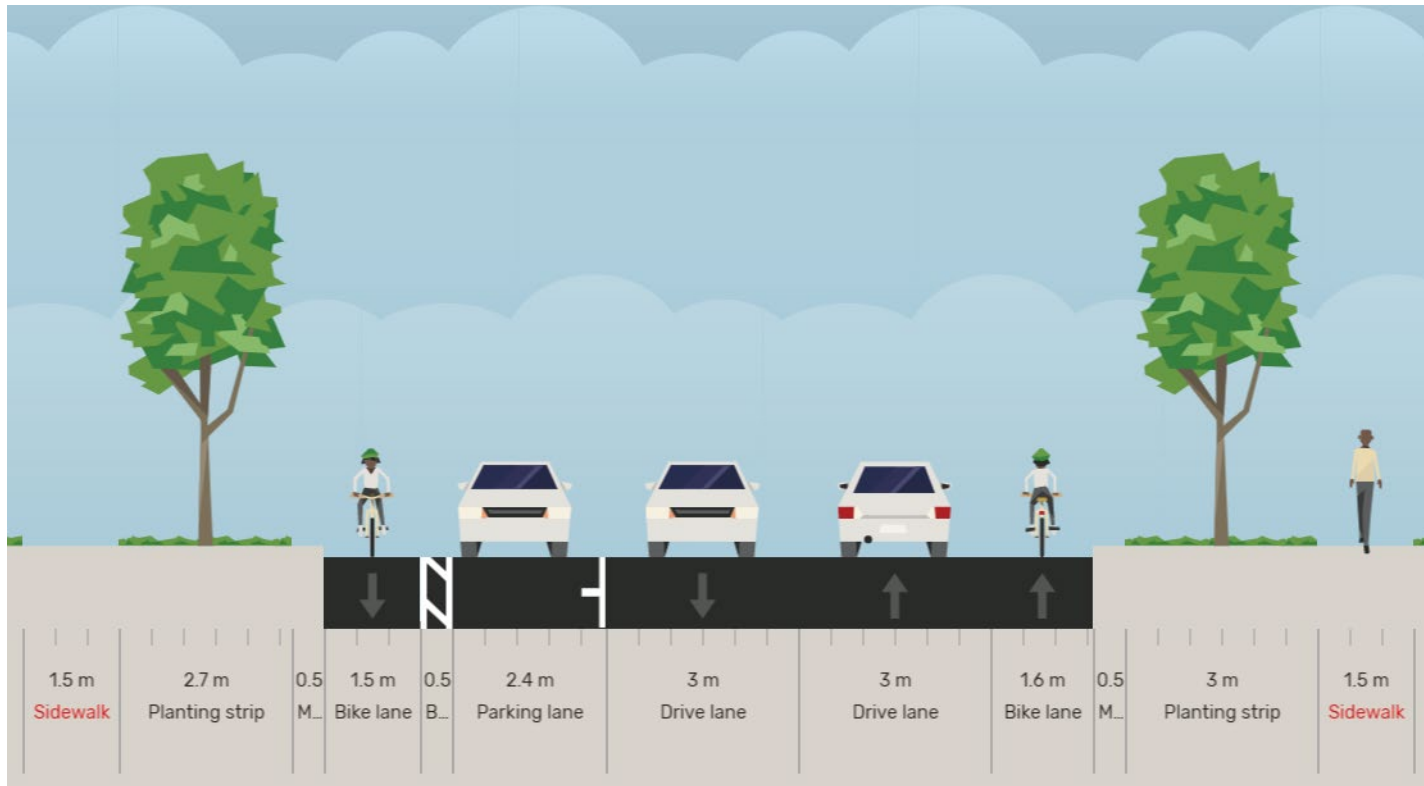
Central Ave

- Between Talbot and William



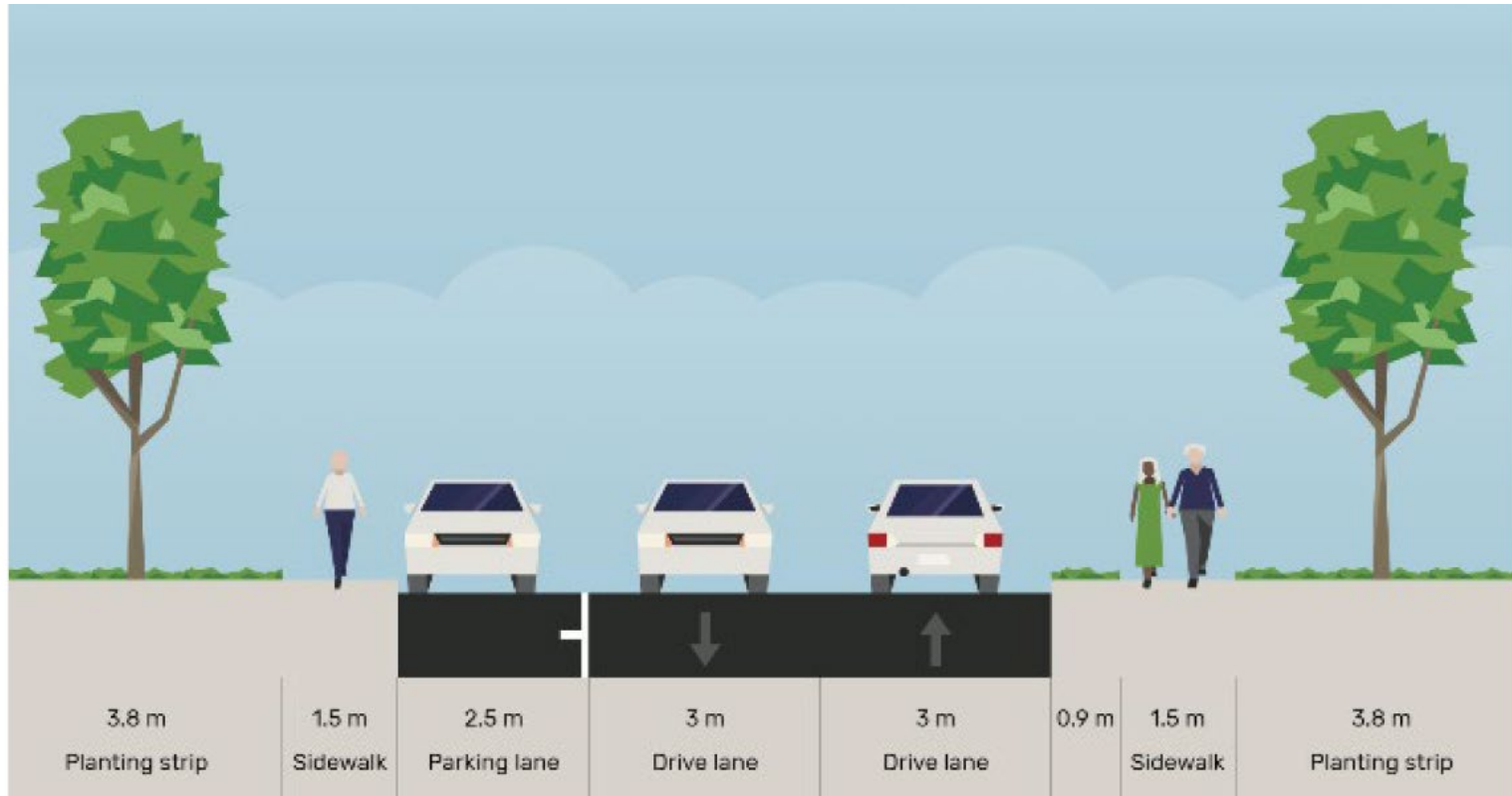
Central Ave – East of Richmond

- Parking protected bike lane



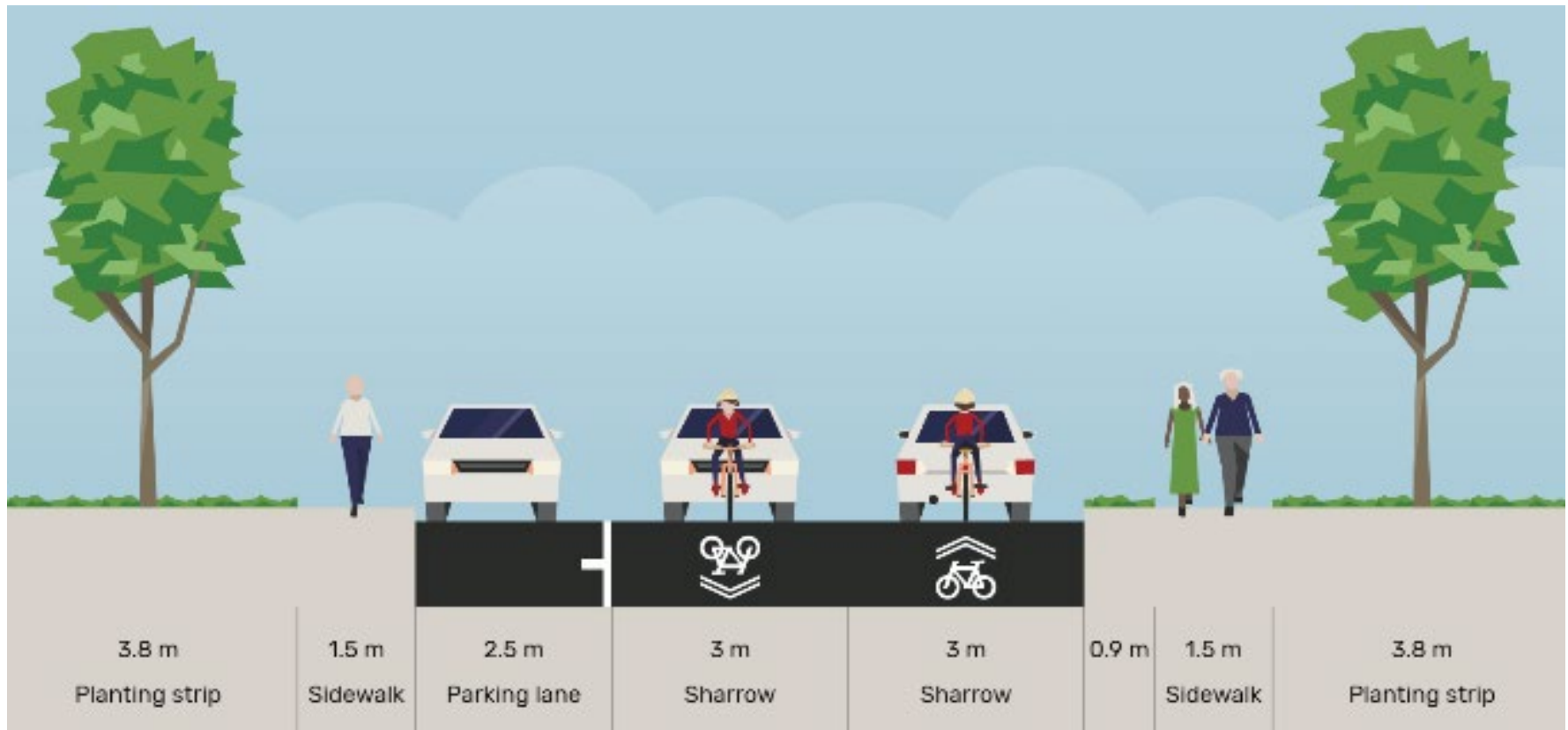


Central – West of Richmond Existing



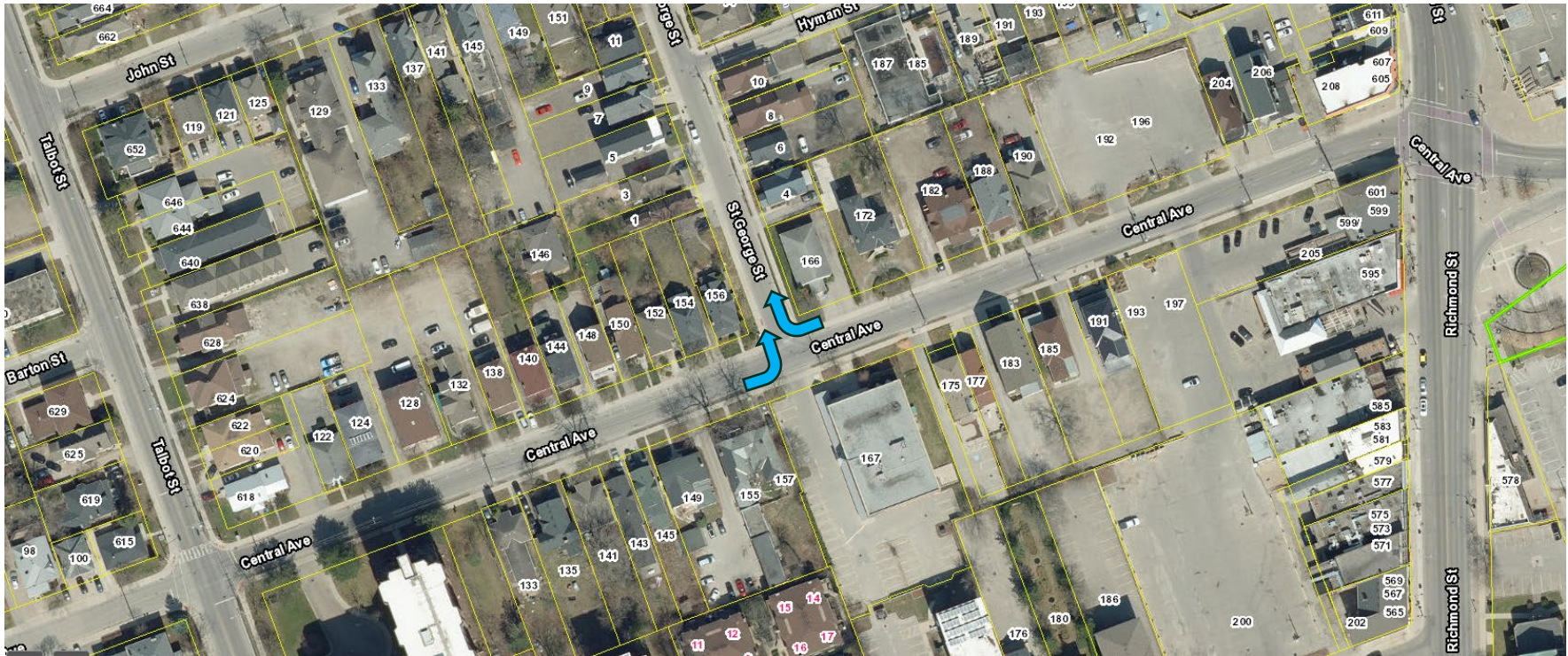
Central – West of Richmond Option 1

- Bicycle Boulevard



Central – West of Richmond Option 1

- Traffic diversion required





Central – West of Richmond Option 2

- Advisory Bike Lane



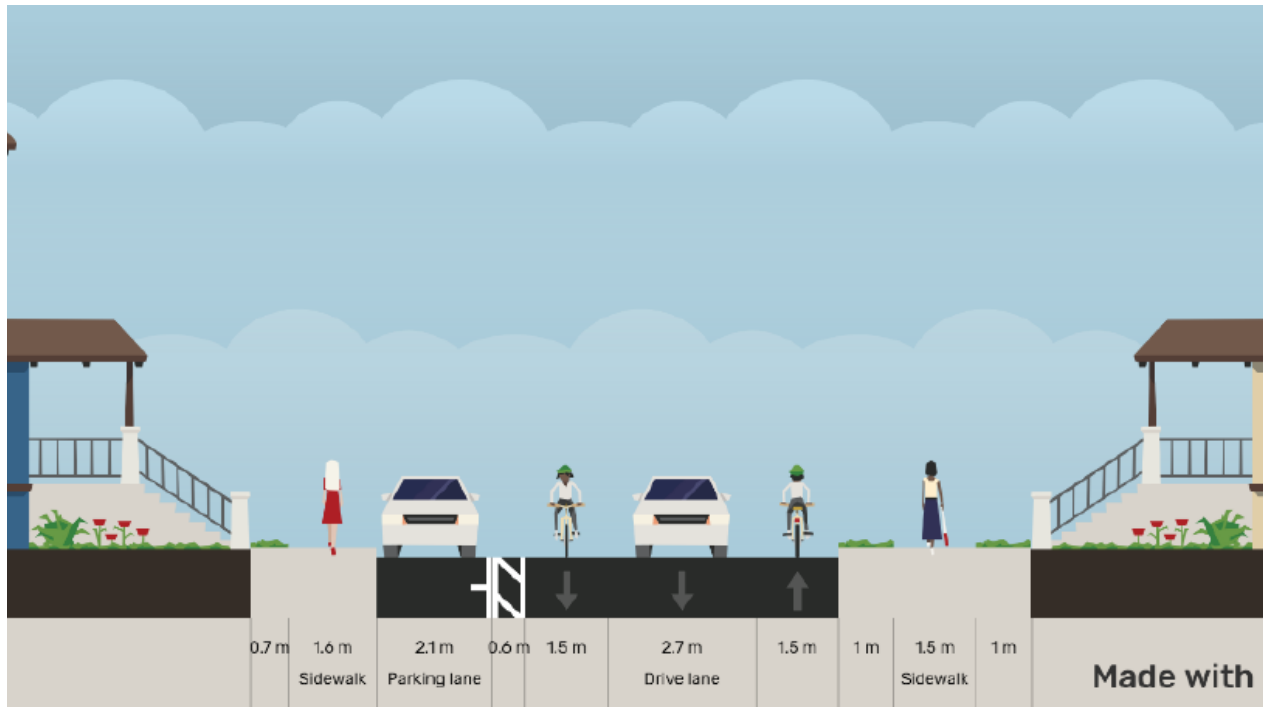
Central – West of Richmond Option 2a

- Remove on-street parking, include wider shared lane for vehicles



Central – West of Richmond Option 2b

- Maintain on-street parking, very narrow shared lane for vehicles



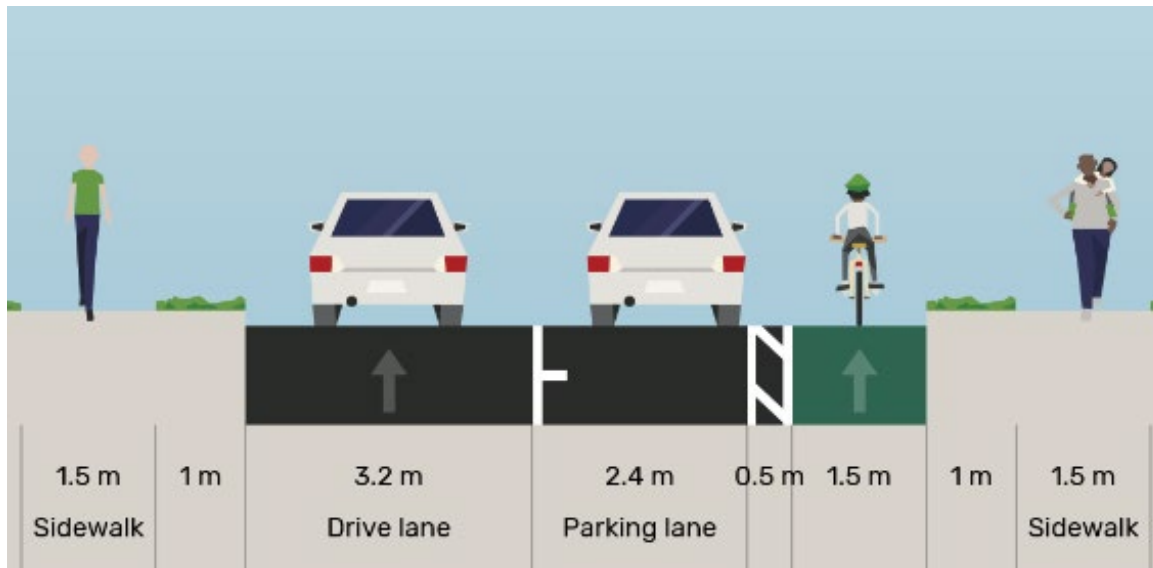


Central Ave

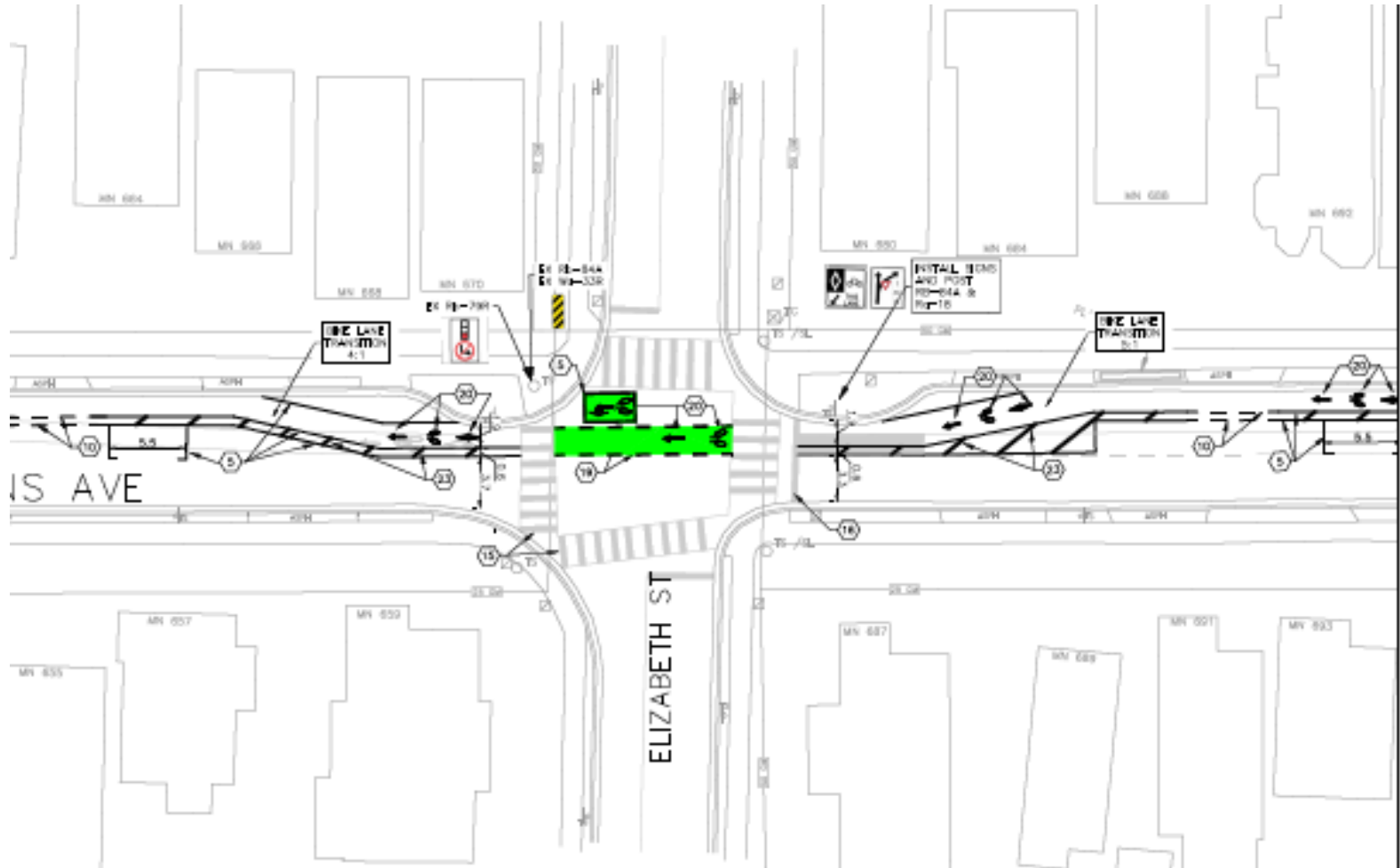
- Questions, comments, feedback

Queens Ave

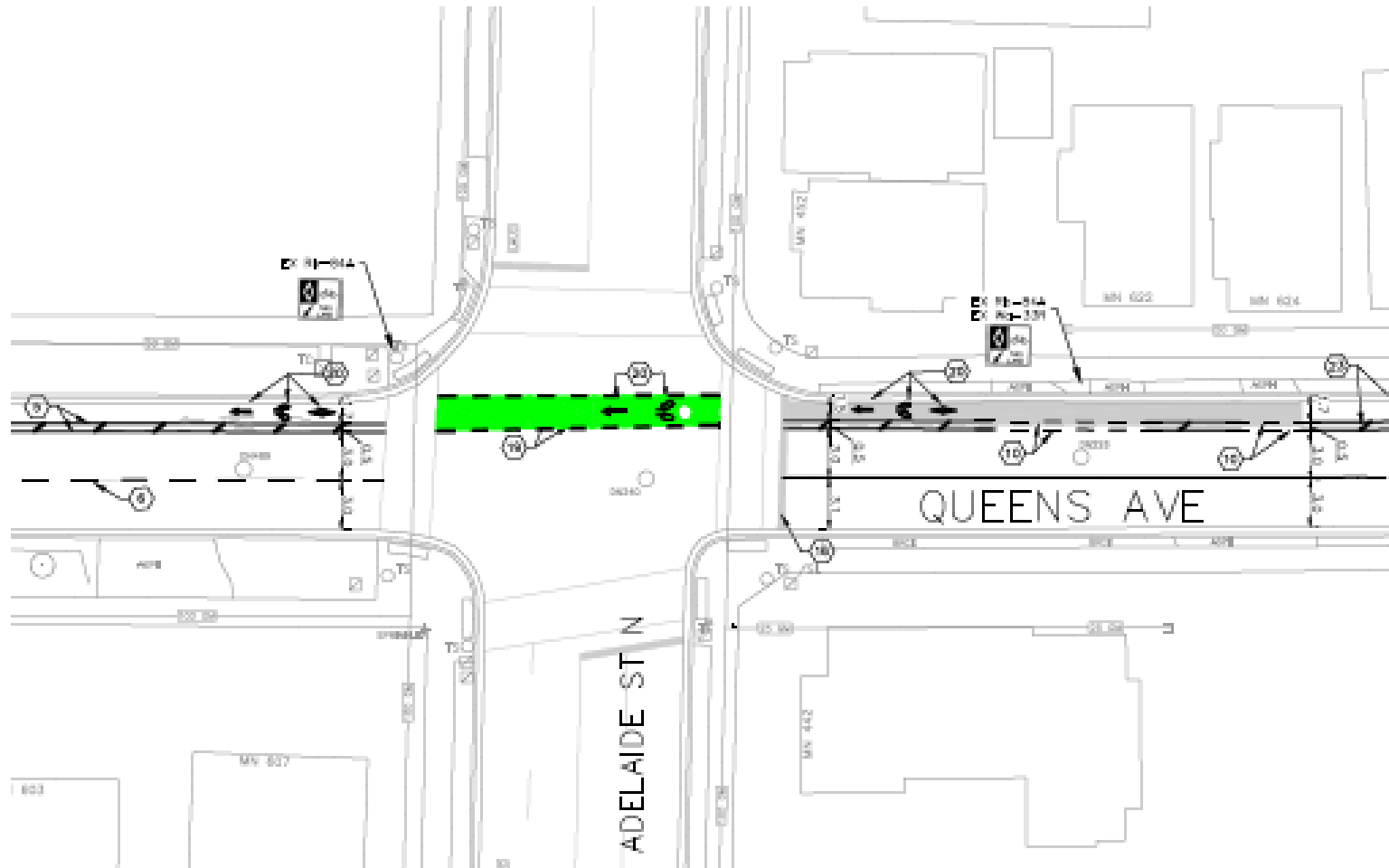
- Completes the East-West Bikeway
- Project limits: Quebec to William
- Parking protected bike lane



Queens Ave at Elizabeth St



Queens Ave at Adelaide St





Queens Ave

- Questions, comments, feedback