



Mobility Master Plan

Cycling Advisory Committee
December 15, 2021



London
CANADA

Presentation Overview



- Context
- Scope
- Engagement
- Schedule
- Draft Vision & Guiding Principles





“Mobility is the movement of people and goods through, and beyond, the city from one location to another in a safe, accessible, convenient, and affordable manner”

-The London Plan (2016)



Context



- Smart Moves Transportation Master Plan (2013)
- London Road Safety Strategy (2014)
- The London Plan (2016)
- London ON Bikes Cycling Master Plan (2016)
- Rapid Transit Master Plan (2017)
- Complete Streets Design Manual (2018)
- Council Strategic Plan (2019 – 2023)
- Community Diversity and Inclusion Strategy (2019)
- Safe Cities London Action Plan (2020)
- Multi-Year Accessibility Plan (in development)
- Climate Emergency Action Plan (in development)



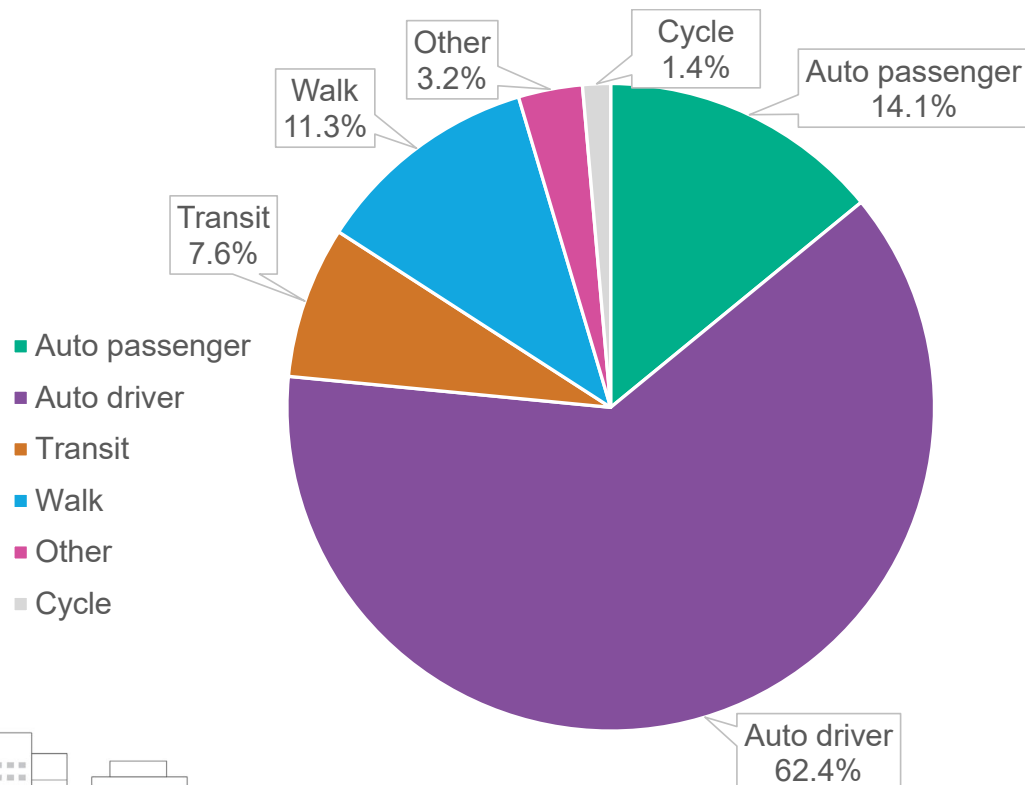
Mobility Facts



- Londoners make an average of 3.4 trips per day; that adds up to 1.63 million trips each day
- 5.2 km is the average trip distance within London
- 273,000 vehicles are registered in London (almost one per adult)
- COVID-19 has resulted in reduced transit and automobile travel and increased walking and cycling
- Automobile use has declined but still generates more than 1/3 of greenhouse gas emissions
- Access to transportation is linked to low London labour market participation



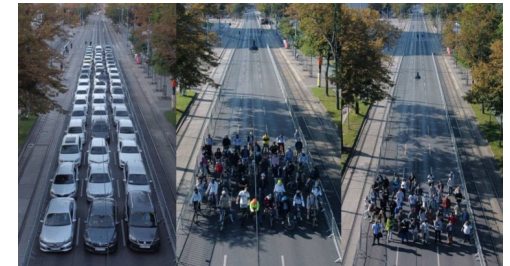
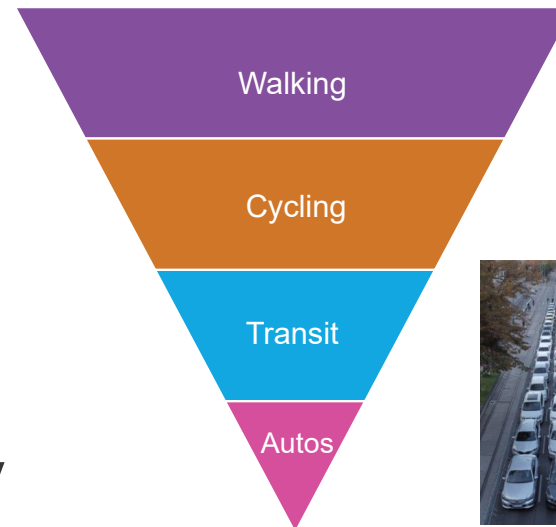
2016 Daily Mode Share



Scope Considerations

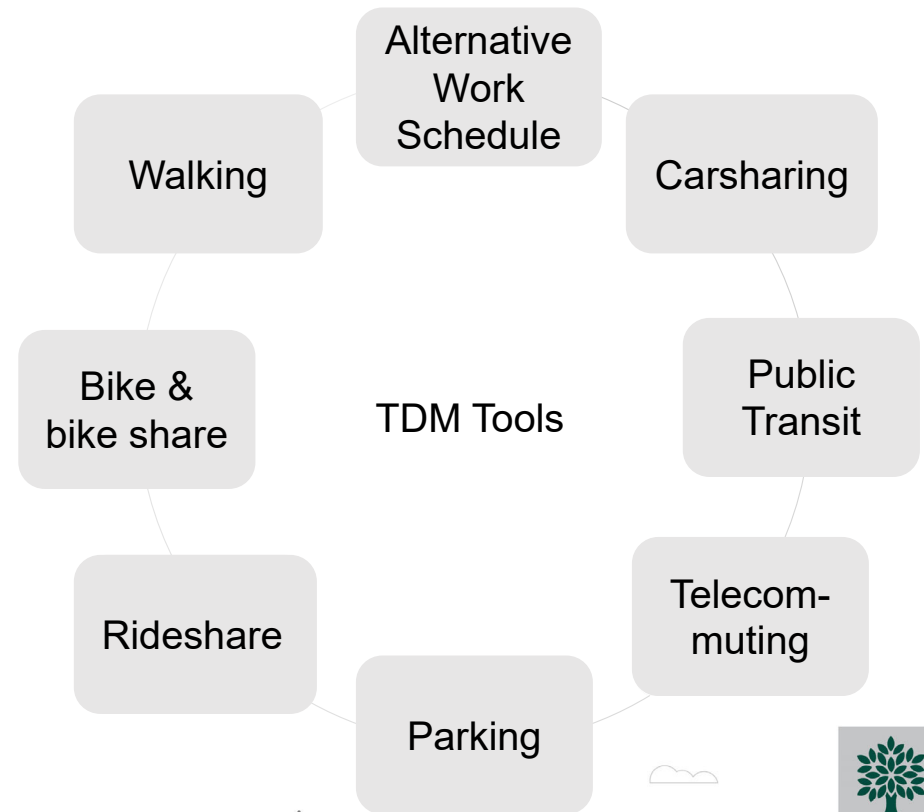


- Moving people
- Multi-modal level of service
- **Cycling**
- Equity and inclusion
- Link to land use
- Reducing auto-dependency



Scope Considerations

- Climate lens
- Transportation Demand Management (TDM)
- Data collection and modelling
- Operations & winter maintenance
- Financial implications



Engagement Framework



- Follow equitable engagement best practices
- Use IAP2 Spectrum of Public Participation
- Leverage existing networks (e.g., Advisory Committees)
- Form a Community Engagement Panel
- Recruit Community Connectors
- Complete a demographics data analysis
- Ensure representation from Indigenous people, Black people, people of colour and other equity-deserving groups
- Identify and address engagement barriers
- Establish clear feedback loops



Schedule



Phase 1: Establish shared vision & understand needs

Fall 2021 – Spring 2022

- Establish community connections
- Provide education opportunities
- Consult on vision and guiding principles
- Learn about mobility experiences, goals, and barriers

Phase 2: Explore solutions & make connections

Summer 2022 – Winter 2023

- Identify opportunities and challenges
- Link feedback to existing policies, plans and programs and identify gaps
- Collect people-trip information
- Develop options for future mobility networks
- Identify opportunities for community empowerment

Phase 3: Confirm & refine path forward

Spring 2023 – Winter 2024

- Begin drafting Mobility Master Plan
- Forecast budgets needed to carry out the plan
- Revisit recommendations with most impacted groups
- Present & publish final plan



Draft Vision Statement



“In 2050, Londoners of all identities, abilities and means will have viable mobility options to allow them to move throughout the city safely and efficiently. The movement of people and goods will be environmentally sustainable, affordable, and supportive of economic growth and development.”

Feedback invited!





Environmentally sustainable:

Take bold action to address climate change and design and move in ways that protect and enhance the natural environment.

Integrated, connected and efficient:

Strengthen community and the economy with better access to people, places, goods and services as London grows.

Mobility Master Plan Guiding Principles

Financially sustainable:

Ensure mobility and its infrastructure is affordable for current and future generations.

Healthy and safe:

Promote and protect the physical, mental and social wellbeing of all and encourage active living.

Equitable:

Recognize diverse mobility needs and embed equity into decision making to enable everyone to move through the city.

Feedback invited!



Staying Connected



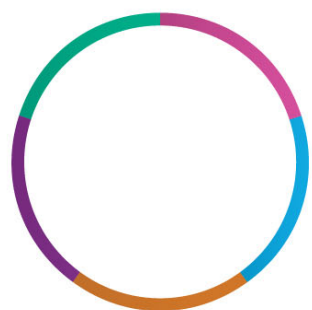
To get project info:

- Subscribe for project updates
- getinvolved.london.ca/mobility-master-plan

To contact the team:

- mmp@london.ca
- 519-661-4580





A Better London For All

Mobility Master Plan

