



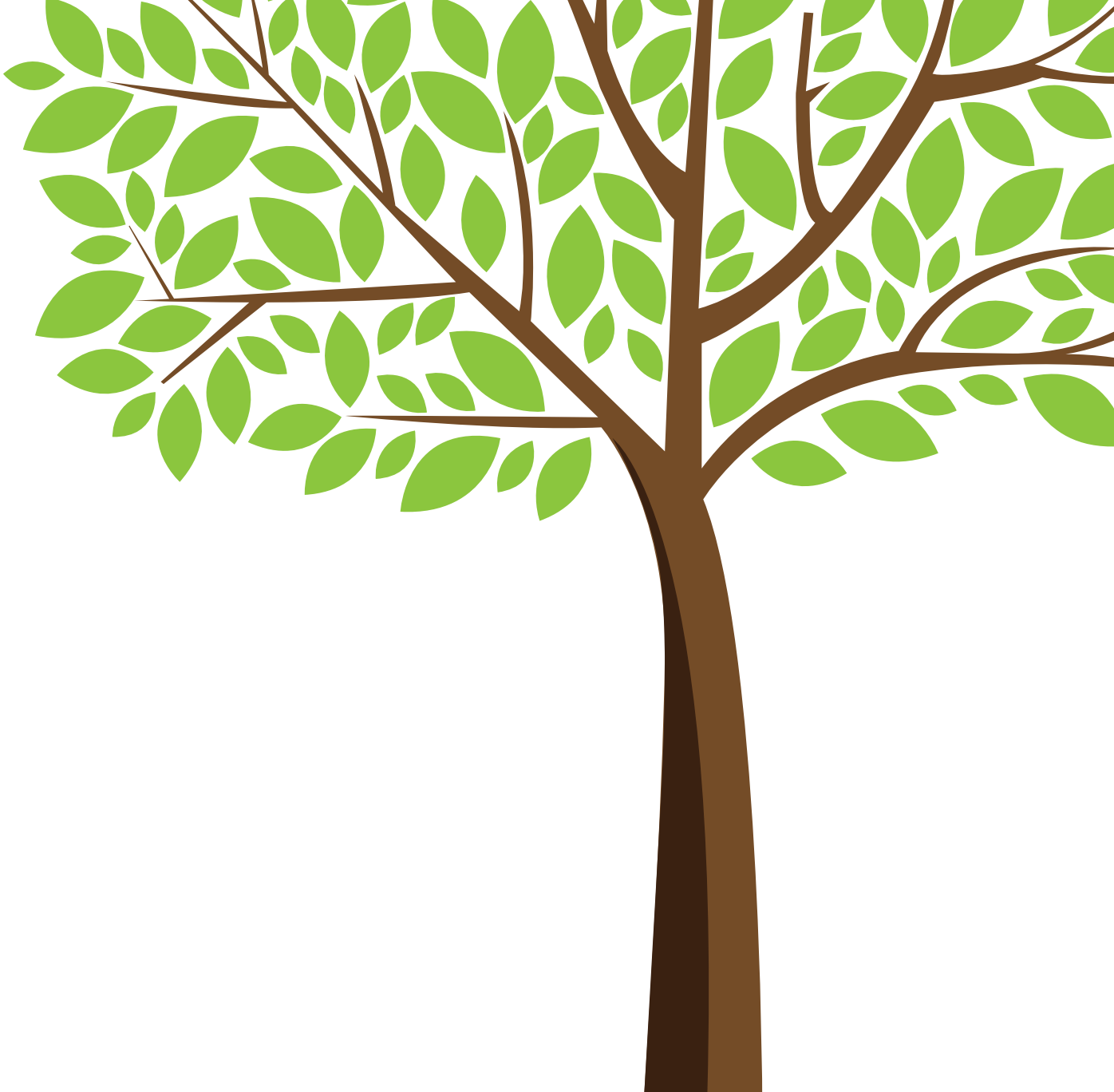
PLANT MORE

TREE PLANTING STRATEGY

2017-2021



London
CANADA



In 2014, The City of London, adopted the “City of London Urban Forest Strategy – Enhancing The Forest City”. The long term vision of the strategy is a healthy, diverse and extensive urban forest for today and the future. London is The Forest City. The guiding principles to implement the strategy are to plant more, protect more, maintain better and engage the community. Together these principles will be used to reach the goal of increasing London’s tree canopy cover to 34% by 2065.

This report describes the strategy for how we’ll achieve that goal together and outlines the first five year Action Plan. It will require close partnerships with the community to be successful. This document will be reviewed and progress updates reported annually to the Trees & Forests Advisory Committee, together with updates on the Urban Forest Strategy. Tracking and monitoring tree planting to better understand impacts such as tree establishment success and mortality will be undertaken in efforts to reduce overall expenses and grow the canopy quicker. This Strategy is a living document that will be reviewed and revised every 5 years as best management practices are investigated and adopted.

CONTENTS

Why Plant More?	1
Benefits of an Urban Forest	2
Context	3
Tree Canopy Cover	4
Canopy Cover Goal	5
Urgent Call to Action	6
How Do We Get There?	8
City Tree Planting	9
Private Tree Planting	10
Plant More; Plant Better	11
Actions	12



WHY PLANT MORE?

OUR TREE COVER HAS DECREASED, FROM

24.7%

OF THE CITY IN 2008, TO

23.7%

IN 2015

REPRESENTING THE LOSS OF

178,000 TREES

MAINLY DUE TO THE LOSSES OF

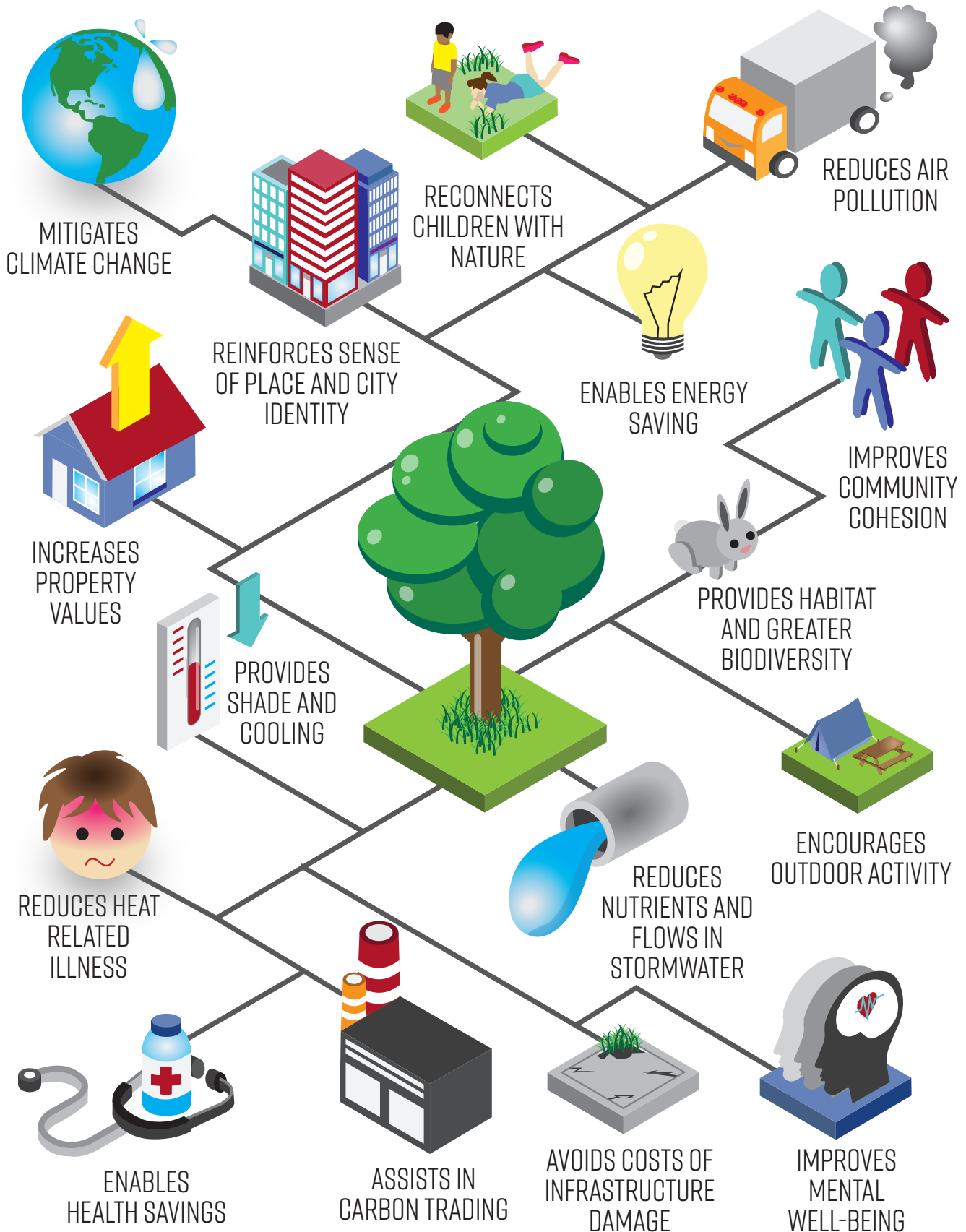
**ASH
TREES**



FROM THE EMERALD ASH BORER



BENEFITS OF AN URBAN FOREST



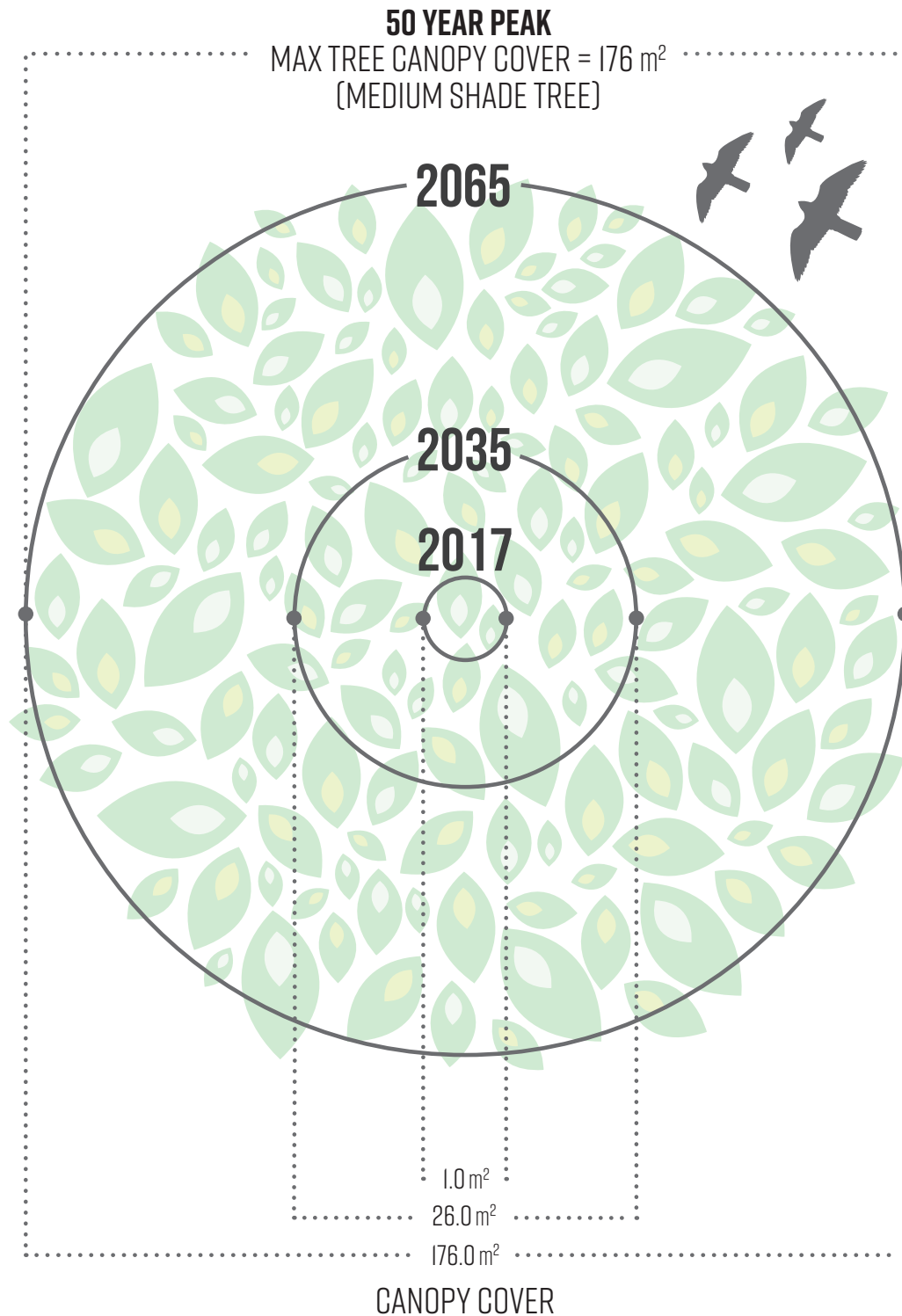
CONTEXT

The City has a number of policy documents that recommend enhanced levels of tree planting, to support the health and well-being of residents in our growing City:



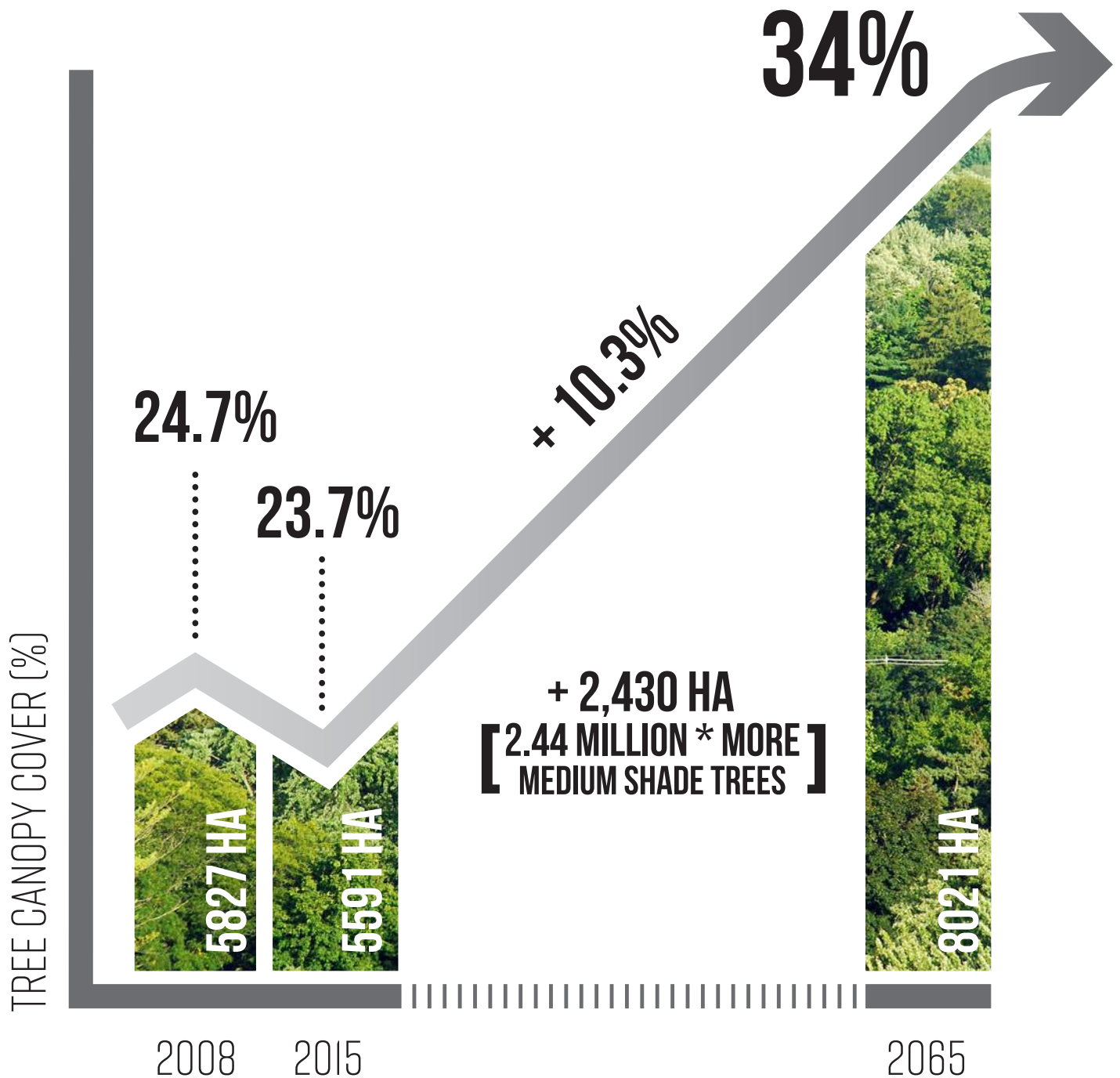
TREE CANOPY COVER

The bird's-eye view looking down at a tree. The canopy of a tree will vary by species, and where or how planted. Trees planted close together have narrower crowns than if they were planted in open areas, so many more trees may have to be planted where naturalizing lands.



CANOPY COVER GOAL

To achieve our Forest City goal of 34% tree canopy cover, we need to grow additional tree canopy over an area of 2,430 hectares by 2065.

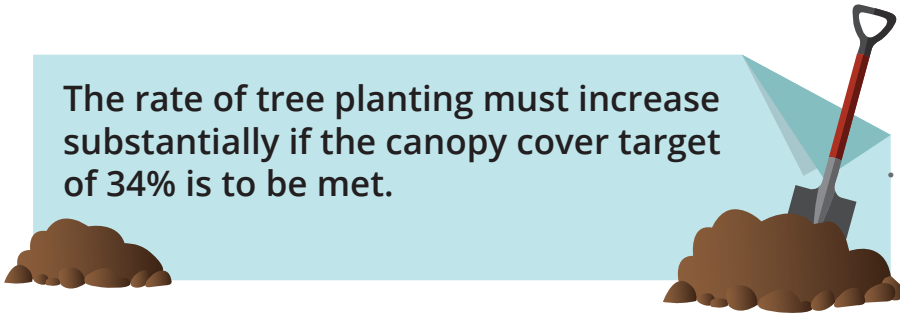


* This number of trees may go up if small-growing trees are planted, go down if large-growing trees are planted, and go up or down if mortality is worse or better than our initial estimate.

URGENT CALL TO ACTION

AS A COMMUNITY WE MUST PLANT MORE NOW BECAUSE:

The rate of tree planting must increase substantially if the canopy cover target of 34% is to be met.



Every year that insufficient trees are planted, more trees must be planted in a future year to stay on track, and those numbers climb exponentially, costing more to reach our target.



It will become increasingly improbable that sufficient trees can be found and planted in future years to make up the shortfall.



It is challenging to establish trees in urban areas, so more trees need to be planted to ensure more will survive.



It takes time for trees to grow and provide many benefits to society.



WE NEED TO PLANT APPROXIMATELY

400 X

THE AREA OF

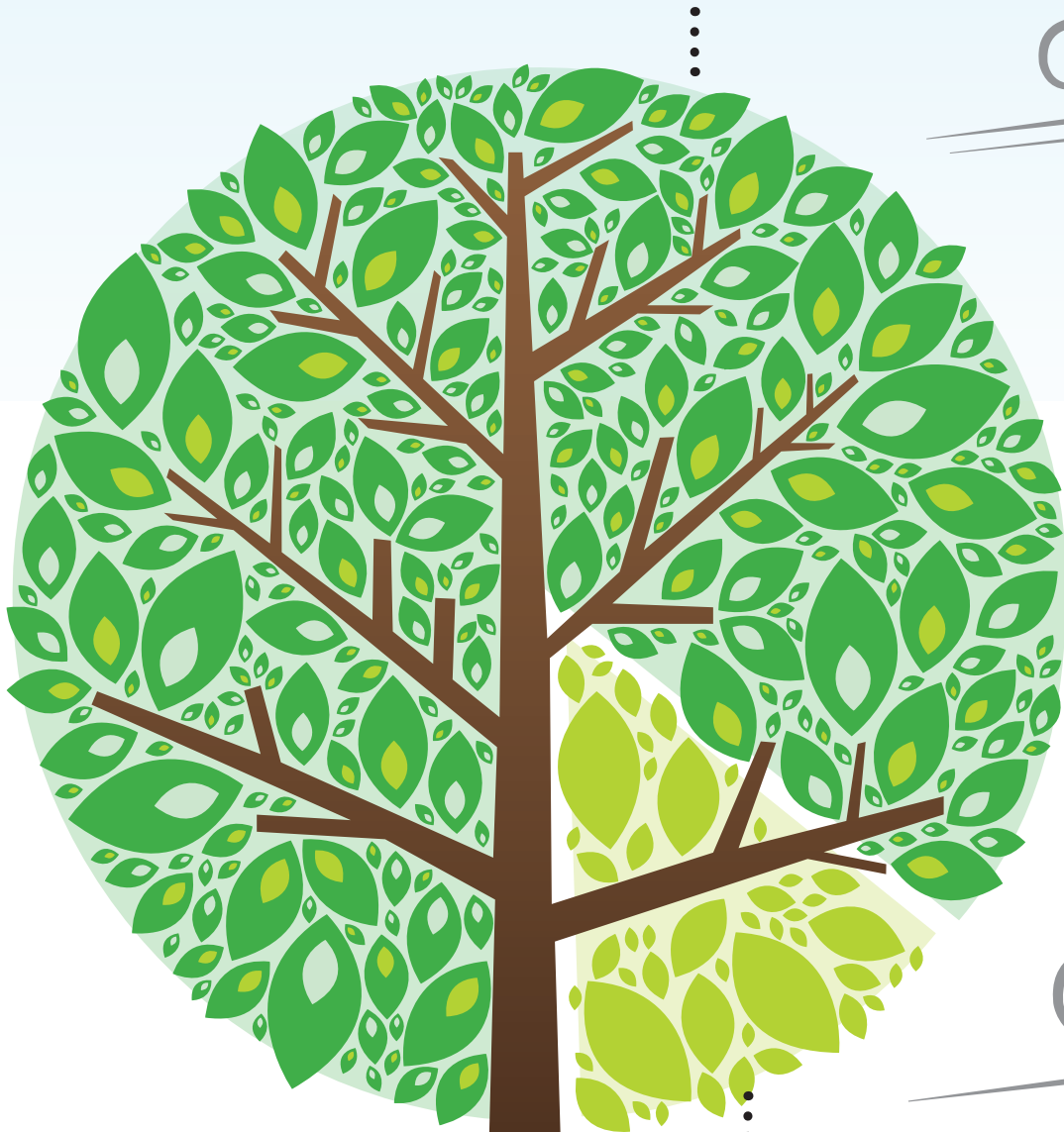
VICTORIA PARK

AT 100% TREE CANOPY COVERAGE

HOW DO WE GET THERE?

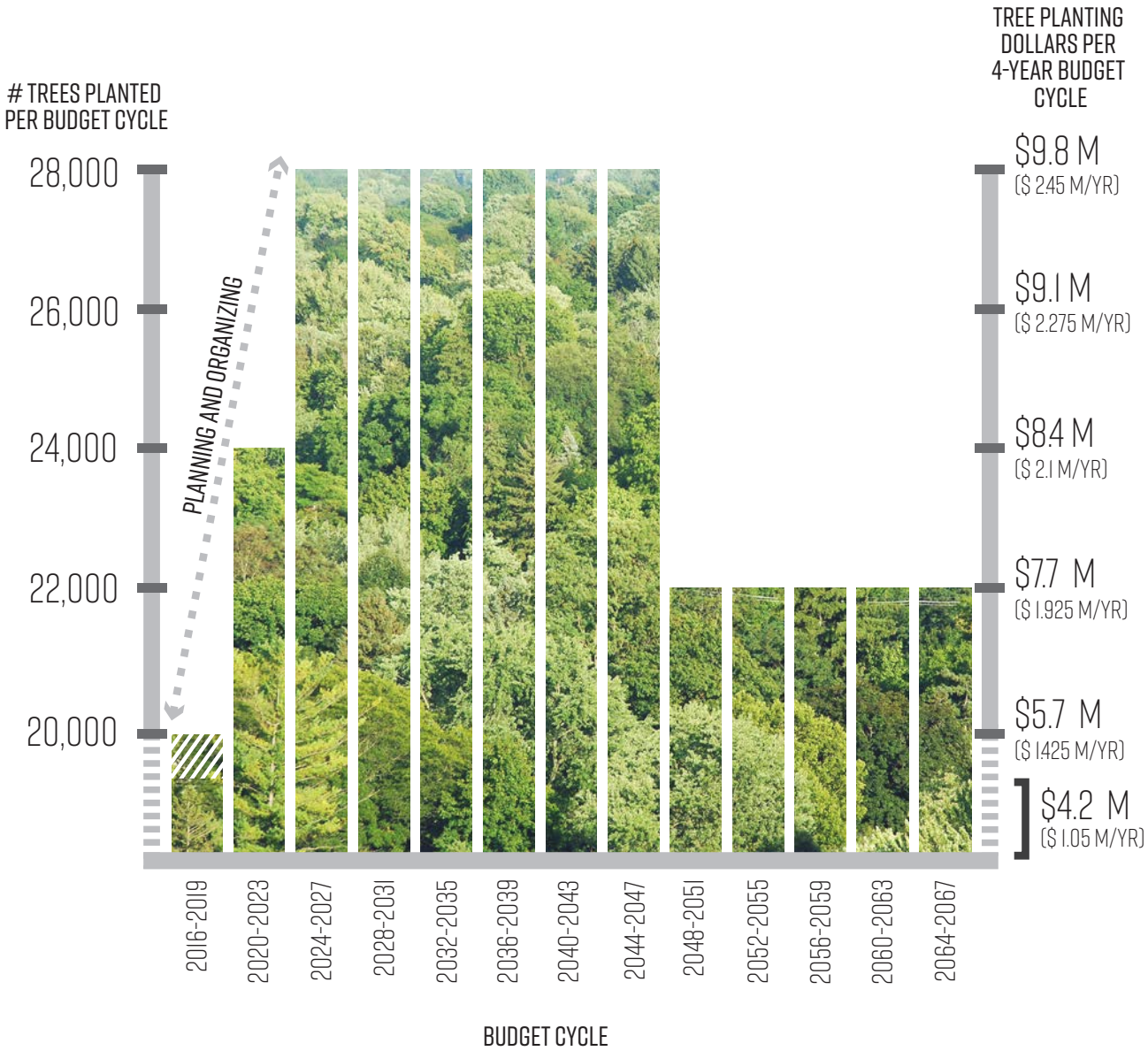
The City owns 11% of the lands within the Urban Growth Boundary that are already at 42% canopy cover. The City will aim for 11% of the required new tree canopy target, averaging one Victoria Park of new tree canopy cover for each year of planting. Everyone else will be encouraged and supported by the City and its partners to plant seven Victoria Parks every year starting in 2017 on private property.

89% [**2,156,000 MORE MEDIUM SHADE TREES**] PRIVATE LANDS



11% [**306,000 MEDIUM SHADE TREES**] PUBLIC LANDS

CITY TREE PLANTING



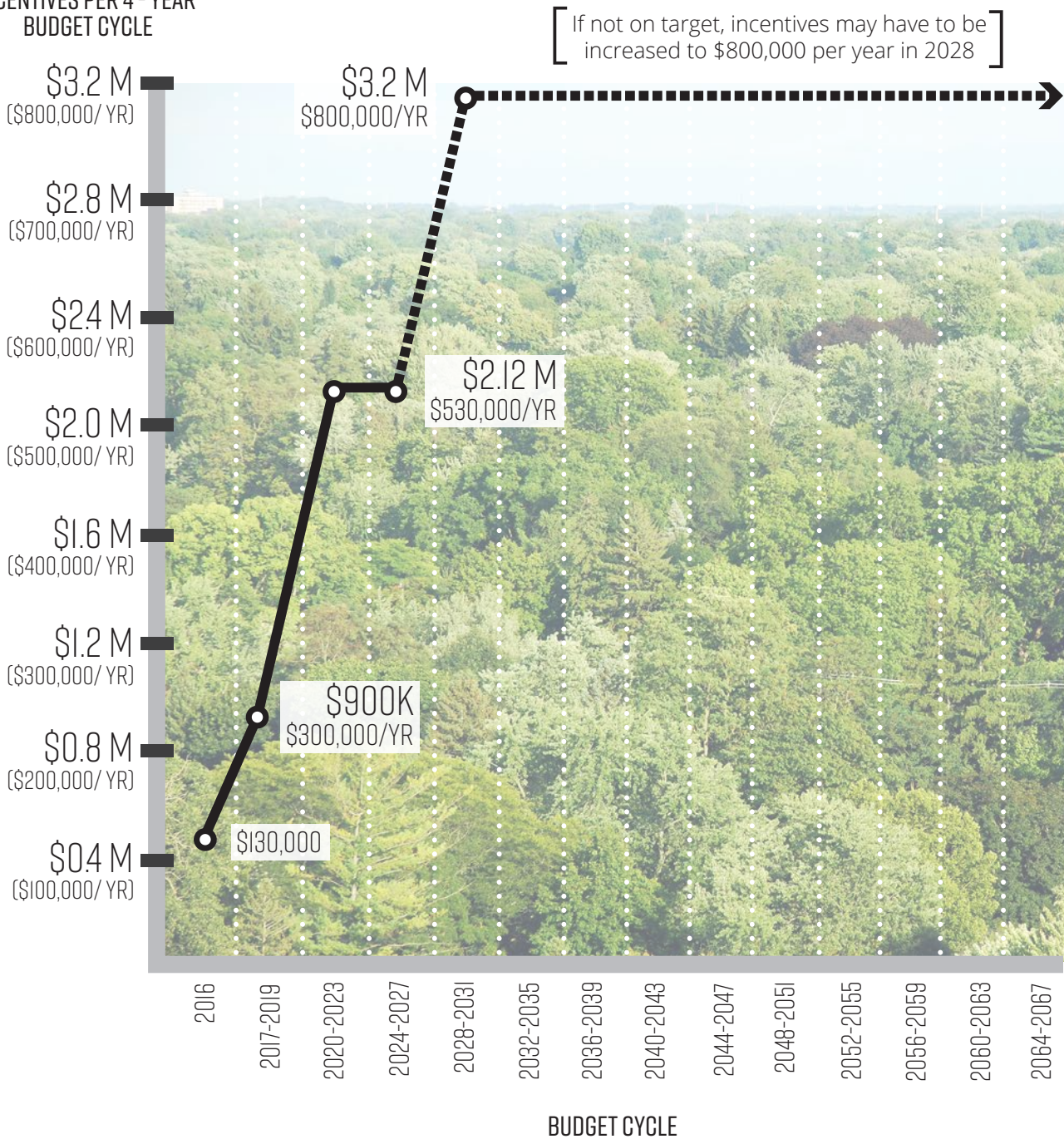
 Council approved an additional \$1.8 million (\$450,000/year) for tree planting in the 2016-2019 budget cycle.

Funding for the strategy has been accommodated within the 10-year capital budget forecast.

PRIVATE TREE PLANTING

The City spent \$1.63 million in 2016 on tree planting, of which \$130,000 went towards incentives for tree planting on private lands. To achieve our goal, 176,000 trees must be planted each 4-year budget cycle (44,000 trees/year).

PROPOSED DOLLARS ALLOCATED TO PRIVATE TREE PLANTING INCENTIVES PER 4-YEAR BUDGET CYCLE

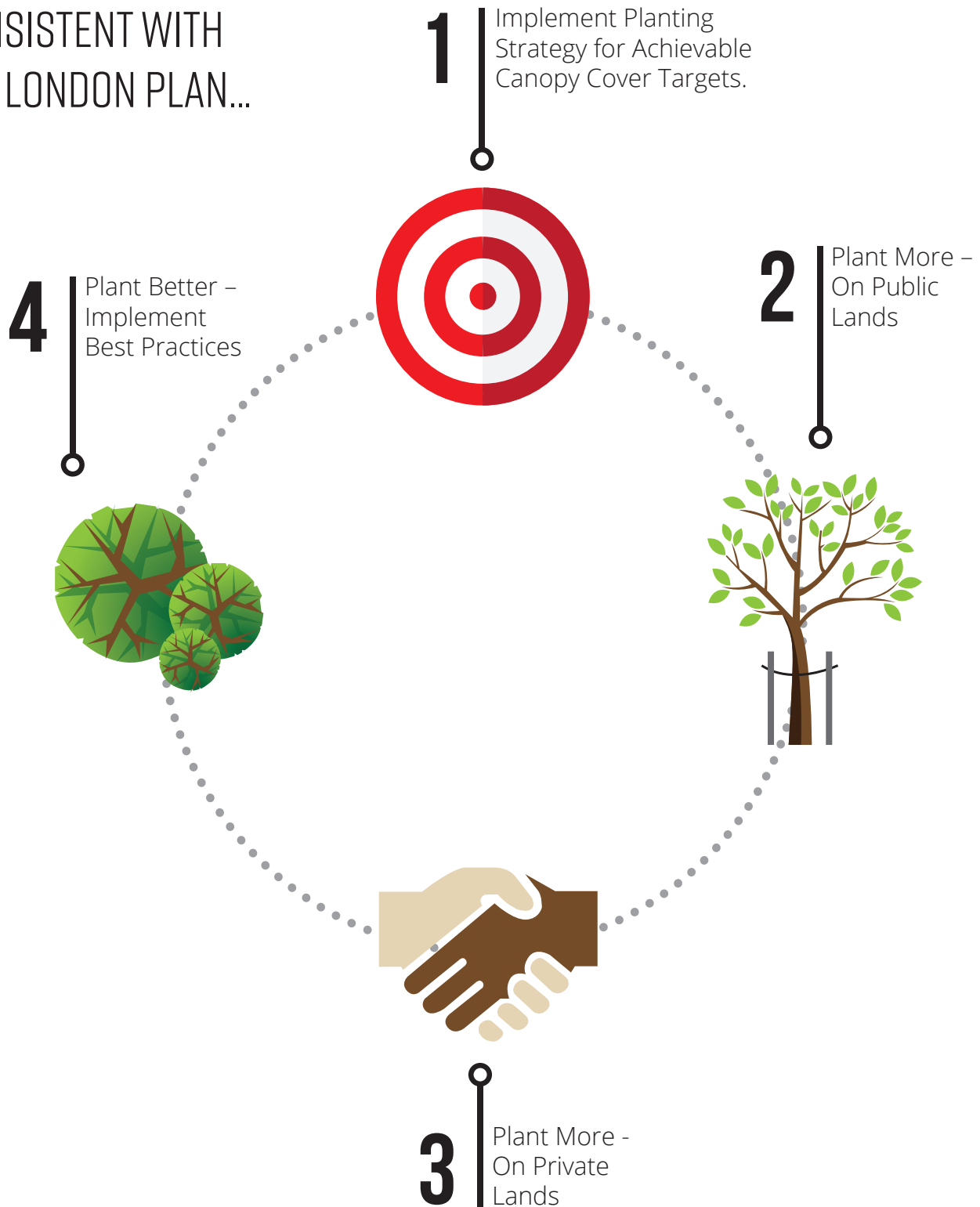


NOTE: Incentives allow the City to leverage more tree planting on private property. Funding for the strategy has been accommodated within the 10-year capital budget forecast.

PLANT MORE; PLANT BETTER

The City and community partners shall increase the number of trees planted, reduce tree mortality and increase average tree life expectancy to achieve our goal.

CONSISTENT WITH
THE LONDON PLAN...



ACTIONS



I. IMPLEMENT PLANTING STRATEGY FOR ACHIEVABLE CANOPY COVER TARGETS

**2017- 2021
(to achieve
it) and then
continuing**

1.1 Reduce new tree mortality in year 1 to 4% or less, and no more than 3% mortality in year 2 and 2% mortality in year 3.

2018 onwards

1.2 Implement a long term communications strategy to educate and engage citizens about tree protection and planting goals.

2018 onwards

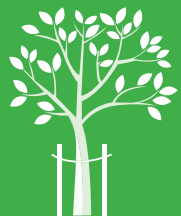
1.3 Assess supply and implement programs to provide suitable trees in a range of species and sizes for future needs.

2018 onwards

1.4 Plant the largest-growing and longest-lived species suitable for that location.

2020 onwards

1.5 Prioritize City planting by (1) low tree canopy cover areas (2) largest area available (3) ease of planting.



2. PLANT MORE – ON PUBLIC LANDS

**2017 (already
underway)**

2.1 Naturalize wherever possible.

2018 onwards

2.2 Identify and protect potentially plantable boulevard space before licensing for private purposes.

2018 onwards

2.3 Assess encroachments of City lands and implement restoration or licensing; allocate realized fees to tree planting and tree maintenance programs.

2020

2.4 With London Hydro, achieve appropriate planting of small, medium and large stature trees within tree-height distance of power lines.

2020 onwards

2.5 Maximize shade tree planting on public lands.

2020 onwards

2.6 Plant more climate-appropriate conifers.

2020 onwards

2.7 Utilize vacant public lands for tree planting.

2020 onwards

2.8 Prepare detailed 5-year planting plans, by neighbourhood, to enhance the urban landscape and restore heritage or cultural landscapes.



3. PLANT MORE – ON PRIVATE LANDS

2017 (already underway)

3.1 Support planting and continual care of food-bearing trees.

2017 (already underway)

3.2 Continue and expand tree planting initiatives by or for persons with disabilities.

2017 (already underway)

3.3 Collaborate with community partners to identify new, and support existing, programs, such as the Million Tree Challenge.

2018 onwards

3.4 Create a tool lending library; donate tree care equipment.

2020 onwards

3.5 Plant City trees in private yards if there is insufficient space on nearby City land.

2020 onwards

3.6 Enter into partnerships to plant and manage trees on institutional lands to benefit the wider community.



4. PLANT BETTER – IMPLEMENT BEST PRACTICES

2018 onwards

4.1 Start the process to improve species diversity. Prioritize species origin & provenance (1) native to Ontario (2) native to North America (3) non-native. Implement assisted migration where appropriate. Avoid any species that is invasive.

2018 - 2020

4.2 Amend by-laws and tree planting guidelines to require more trees be planted and to ensure optimal establishment rates through regular watering and tending.

2018 onwards

4.3 Revise planting standards to optimize soil volume, soil quality and other factors for success.

2018 onwards

4.4 Implement better physical tree protection measures.

2019 - 2022

4.5 Monitor success of reducing mortality and adjust Planting Strategy as needed.

2020 onwards

4.6 Apply maximum parking requirements, to support 30% canopy cover with shade tree planting.