

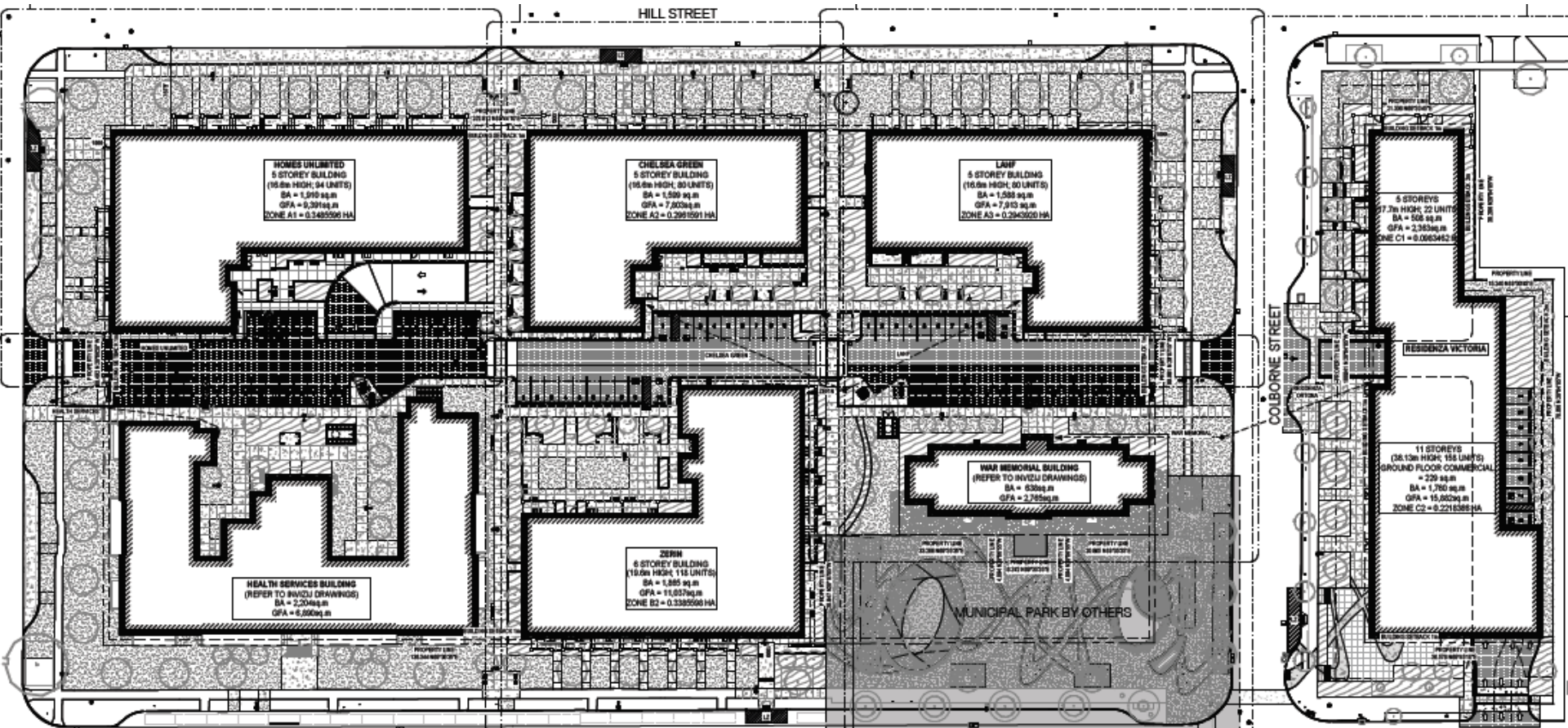


Old Victoria Hospital – Phase II 370 South & 124 Colborne **SPA21-081**

Application by Vision SoHo Alliance
PEC November 22, 2021



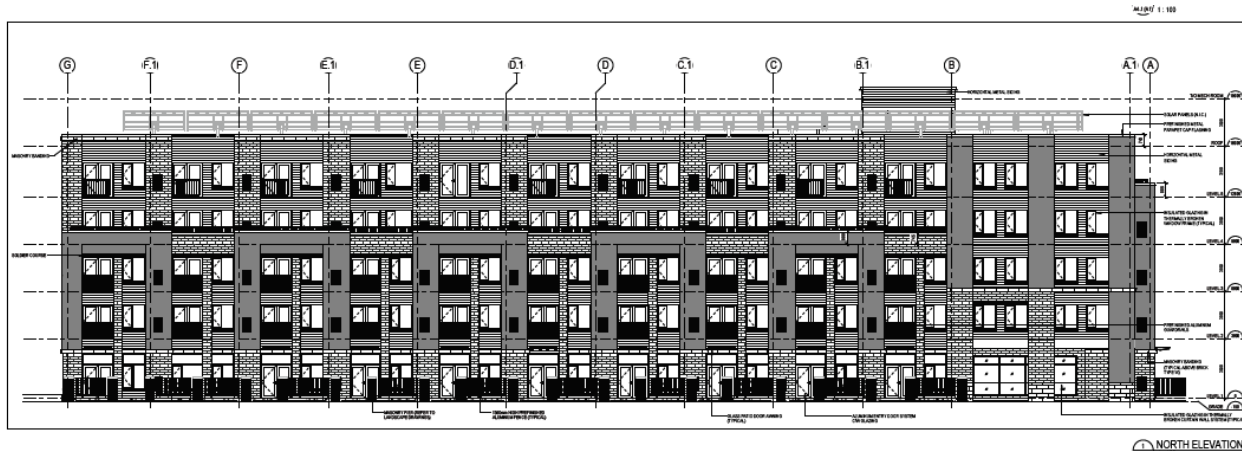
Complete Site Plan





Homes Unlimited

- Fronting onto Hill Street to the north and Waterloo Street to the west;
- Apartment building with a height of 5-storeys, or 16.0m; and,
- A unit count of 94 units.



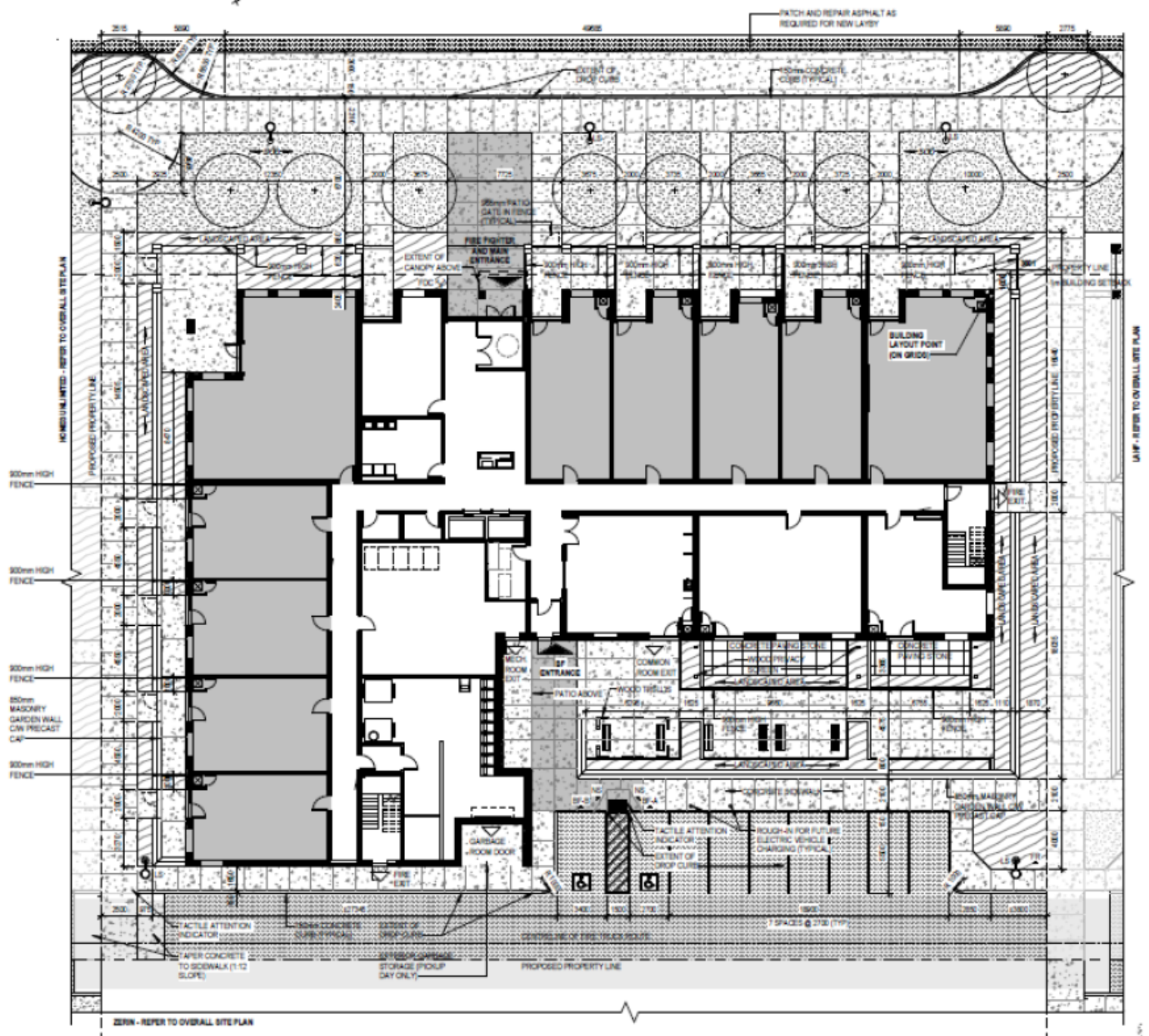


Chelsea Green

- Fronting onto Hill Street to the north;
- Apartment building with a height of 5-storeys, or 16.0m; and,
- A unit count of 80 units.



HILL STREET



H/M/S UNLIMITED - REFER TO OVERALL SITE PLAN

L/M/P - REFER TO OVERALL SITE PLAN

REFER - REFER TO OVERALL SITE PLAN

7/20/20



London Affordable Housing Foundation (LAHF)

- Fronting onto Hill Street to the north and Colborne Street to the east;
- Apartment building with a height of 5-storeys, or 16.0m; and,
- A unit count of 80 units.





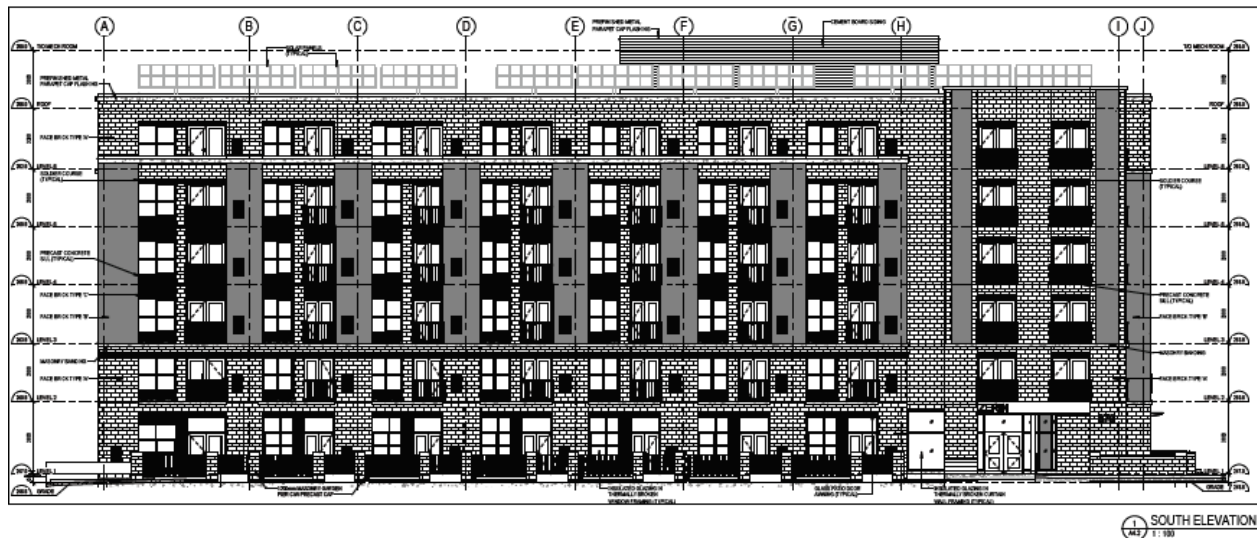
Indwell - Victoria Health Sciences Building (Existing)

- Fronting onto South Street to the south and Waterloo Street to the west;
- A height of 2-storeys (as existing); and,
- A unit count of 80 units.



Zerin

- Fronting onto South Street;
- Apartment building with a height of 6-storeys, or 19.0m; and,
- A unit count of 118 units.





Indwell - War Memorial Building (Existing)

- Fronting onto South Street to the south, Colborne to the east;
- A height of 3-storeys, or 15.6m (as existing); and,
- A unit count of 42 units.

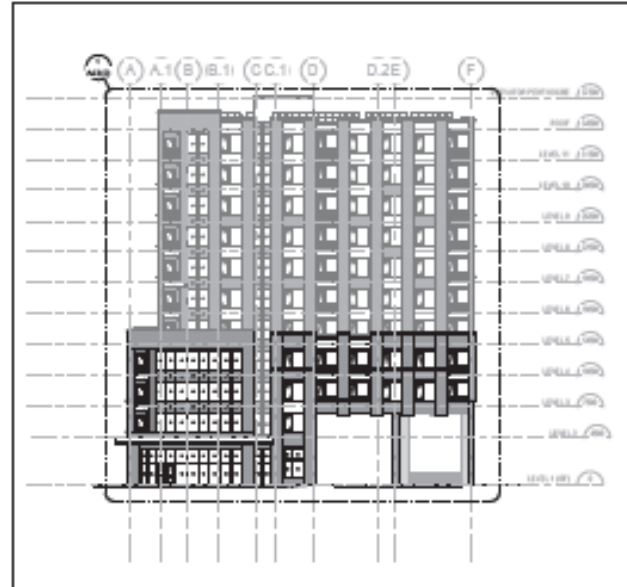


Residenza Victoria (Italian Senior's Project)

- Fronting onto Hill Street to the north, South Street to the south, and Colborne Street to the west;
- Comprised of two attached apartment buildings:
 - A southern building with a height of 11-storeys, or 36.0m, and;
 - A northern building with a height of 5-storeys, or 17.0m;
- A total unit count of 180 units and 229 m² of non-residential GFA at-grade:
 - A southern building with 158 units and 229 m² of non-residential GFA at-grade; and,
 - A northern building with 22 units.



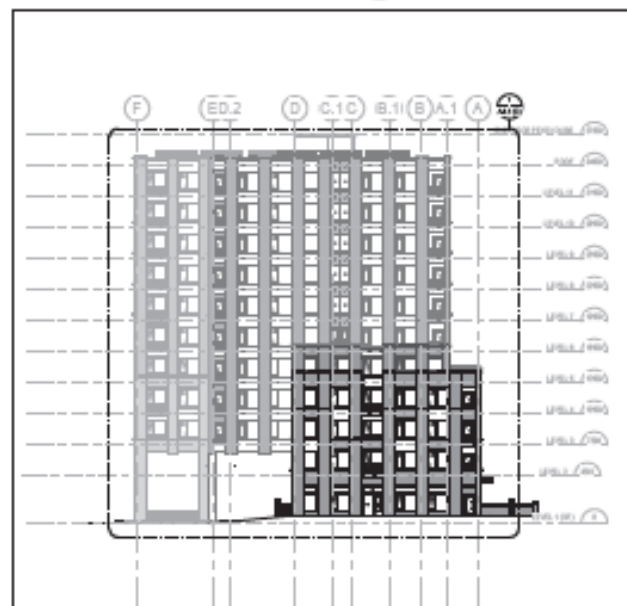
4 OVERALL ELEVATION - WEST
SCALE: 1:250



5 OVERALL ELEVATION - SOUTH
SCALE: 1:250



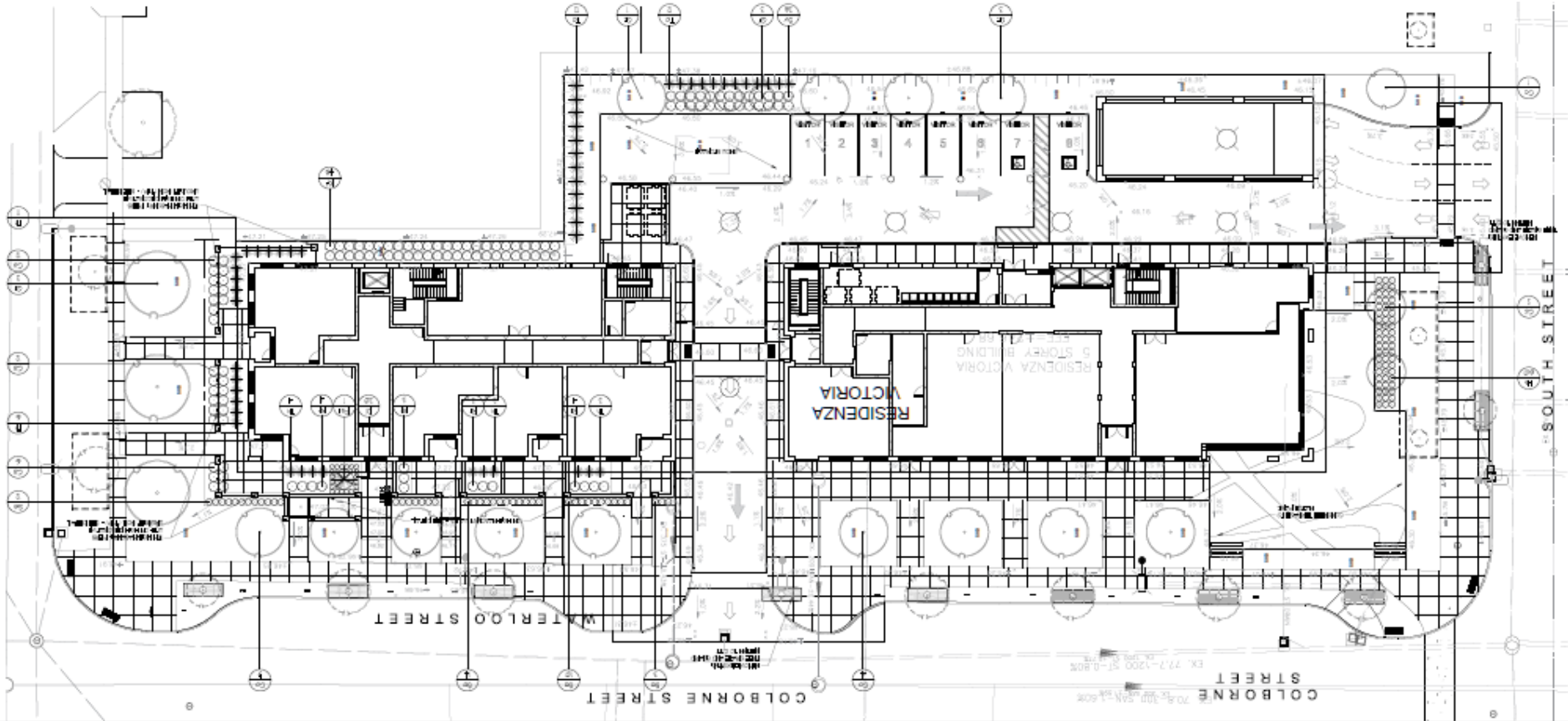
3 OVERALL ELEVATION - EAST
SCALE: 1:250



1 OVERALL ELEVATION - NORTH
SCALE: 1:250



London
CANADA





Full Site - Site Plan

