



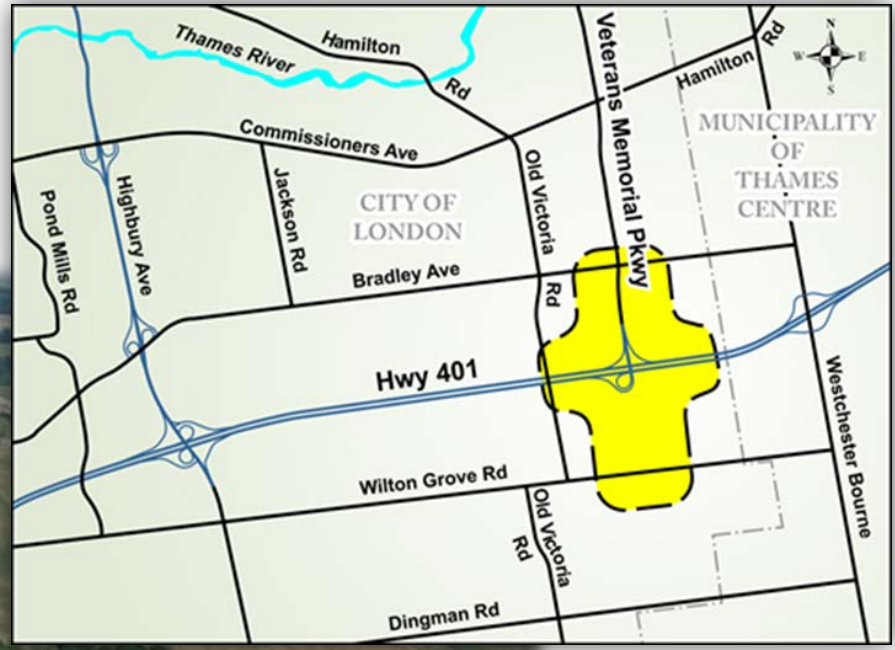
# Veterans Memorial Parkway Extension and Highway 401 Interchange Improvements

May 6, 2013 Civic Works Committee Presentation

Doug MacRae P.Eng, Division Manager Transportation Planning and Design



# STUDY AREA



**Innovation Park**  
(currently under development)

**Woodlot**  
(undesigned)

**Natural Heritage System**  
(Designated  
"Environmental Review")

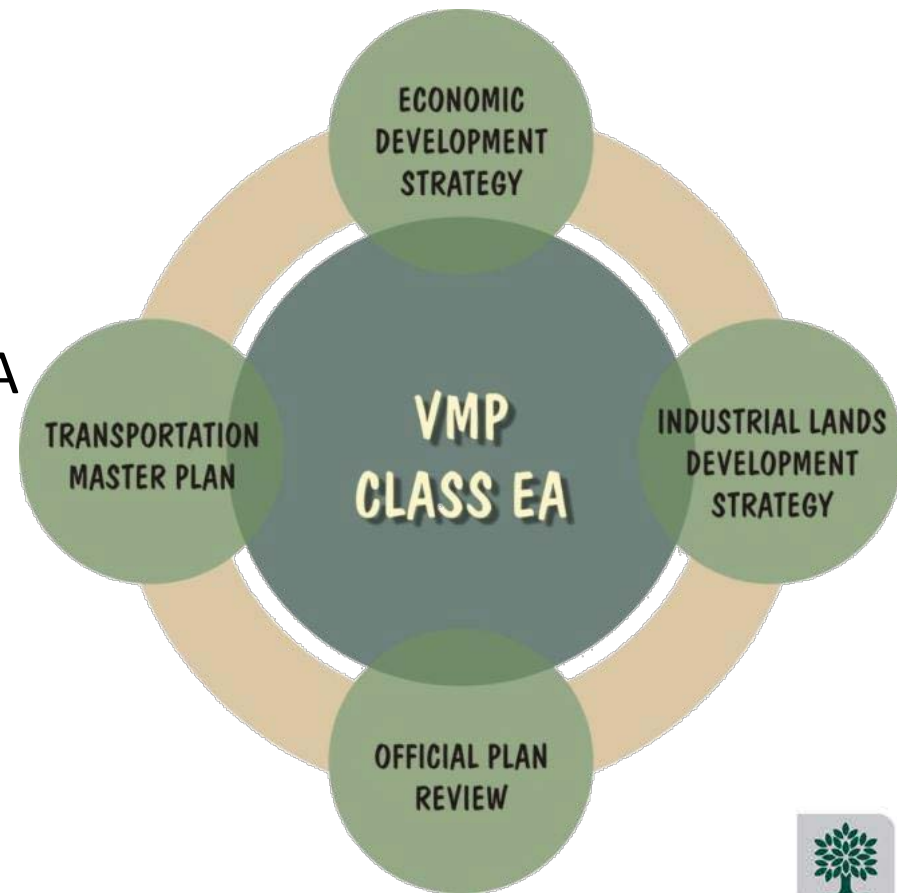
**London Dairy Farm**





# VETERANS MEMORIAL PARKWAY

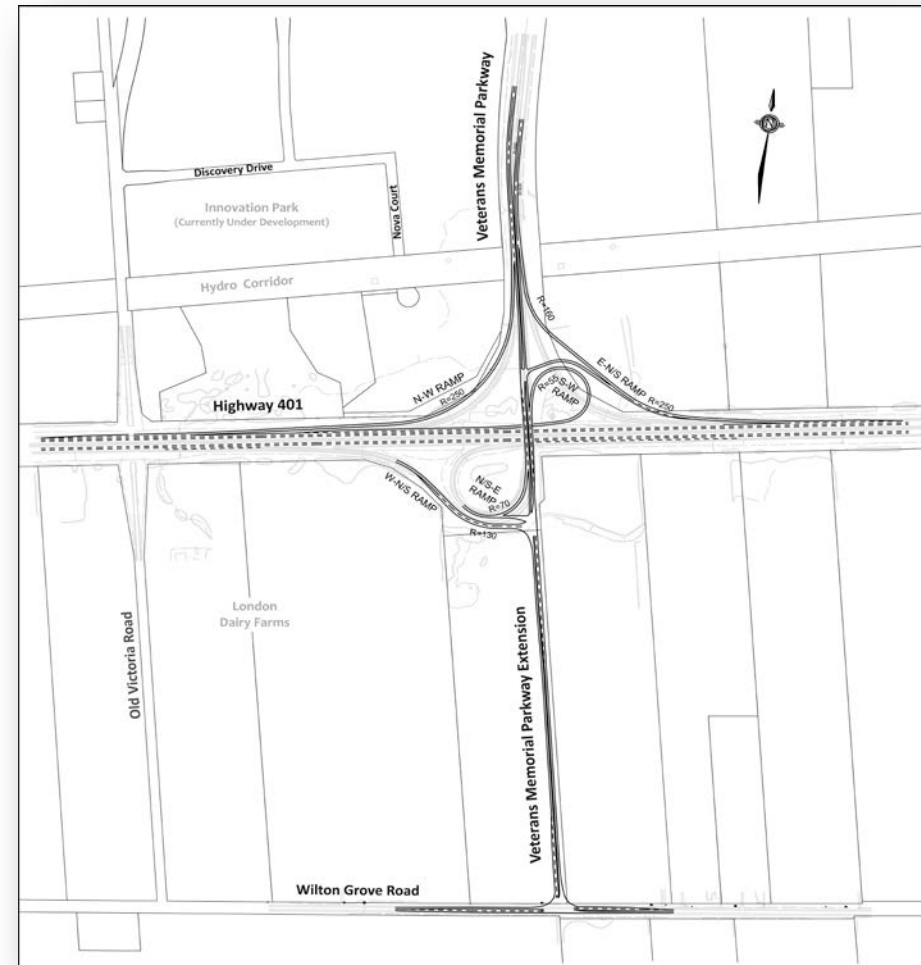
- Extend Veterans Memorial Parkway to Wilton Grove Road
- Highway 401 Interchange Improvements
- Municipal and Provincial Class EA
- Consultation / Presentations
- 2 PICs (spring/fall 2012)
- High constraints in NW and SE





# RECOMMENDED PLAN

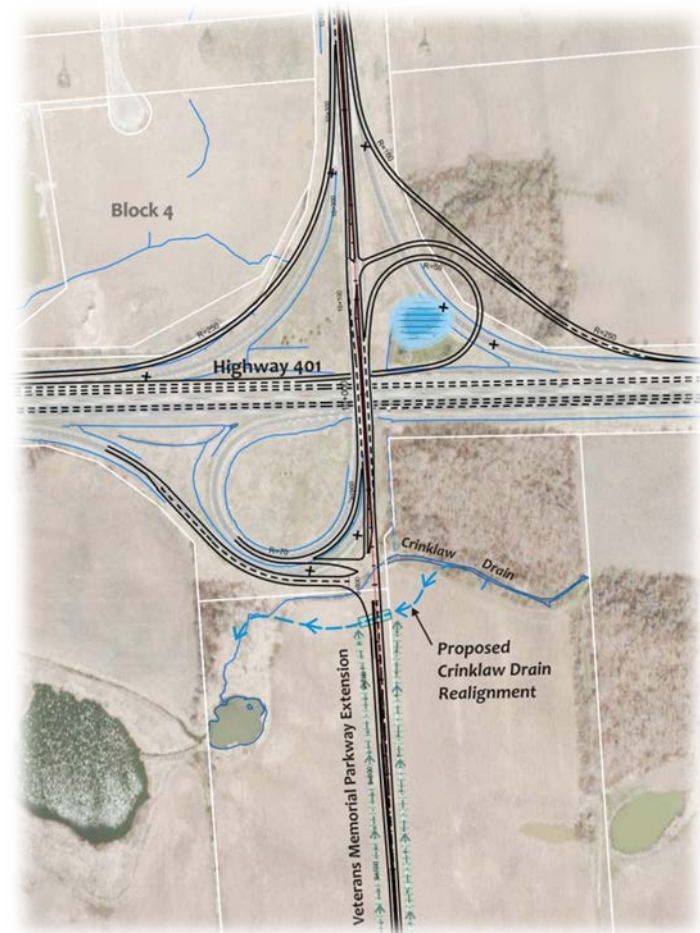
- Extension of VMP as a 2-lane expressway, within a 60m ROW
- Interchange improvements that include new and reconfigured ramps in the SW, NW and NE quadrants
- Replacement of VMP Bridge on existing alignment
- New intersection at Wilton Grove Road





# RECOMMENDED PLAN

- Traffic signals at ramp terminals
- Illumination of interchange ramps
- Turn lanes on Wilton Grove Road
- Stormwater Management
- Realigned Crinklaw Drain
- Provision for wildlife passage through Crinklaw Drain culvert
- Design accommodates LCVs
- Approximate Cost \$25-30M





# CLASS EA / PUBLIC CONSIDERATIONS

- Positive public feedback and interest
- Short-term full closure of VMP Bridge and south portion of interchange
- Minimize impacts to Natural Heritage System in SE quadrant
- Avoid impacts to Innovation Park
- Property (portions of 4 parcels - 3 landowners)



# NEXT STEPS

## Class EA Requirements

- Committee approval
- Place Transportation Environmental Study Report (TESR) on public record for review

## Next Steps

- Design
- Property Acquisition
- Construction



May 6, 2013 Civic Works Committee Presentation

Doug MacRae P.Eng, Division Manager Transportation Planning and Design