

Report to Civic Works Committee

To: Chair and Members
Civic Works Committee

From: Kelly Scherr, P.Eng., MBA, FEC
Deputy City Manager, Environment and Infrastructure

Subject: Appointment of Consulting Engineer for the Hyde Park EA
SWM Works – Assignment ‘A’ Detailed Design

Date: August 31, 2021

Recommendation

That on the recommendation of Deputy City Manager, Environment and Infrastructure, the following actions **BE TAKEN** with respect to the appointment of consulting services for the Hyde Park EA SWM Works – Assignment ‘A’ project:

- (a) Stantec Consulting Inc. **BE APPOINTED** consulting engineers to complete the detailed design for the Hyde Park EA SWM Works – Assignment ‘A’ project in accordance with the estimate, on file, at an upset amount of \$301,032.57 (including contingency, provisional items and allowances), excluding HST, in accordance with Section 15.2 (e) of the City of London’s Procurement of Goods and Services Policy;
- (b) the financing for this project **BE APPROVED** as set out in the Sources of Financing Report attached, hereto, as Appendix ‘A’;
- (c) the Civic Administration **BE AUTHORIZED** to undertake all the administrative acts that are necessary in connection with this project;
- (d) the approval given, herein, **BE CONDITIONAL** upon the Corporation entering into a formal contract; and
- (e) the Mayor and City Clerk **BE AUTHORIZED** to execute any contract or other documents, if required, to give effect to these recommendations.

Executive Summary

Purpose

This report recommends the appointment of Stantec Consulting Inc. to complete the detailed design for portions of the stormwater management (SWM) works in the Hyde Park Area identified as Assignment ‘A’.

Context

Since 2002, substantial new development has occurred in the Hyde Park area including numerous parcels of commercial and residential development, as well as major arterial road widenings. The “Hyde Park Community Storm Drainage and Stormwater Management Servicing Municipal Class Environmental Assessment Addendum: Schedule ‘B’ Master Plan” (Hyde Park EA Addendum) study was finalized in October 2020 to recommend solutions to localized stormwater servicing challenges and update servicing solutions since the original SWM EA had been developed in 2002.

The 2020 Hyde Park EA Addendum study made recommendations to balance the requirements of SWM servicing in relation to the natural and built environment. The study identifies retrofits to existing SWM facilities to optimize existing infrastructure, new natural channel construction, Low Impact Development opportunities, and environmental enhancements aimed at mitigating the impacts of development. This design Assignment ‘A’ is the first of two design packages to complete a holistic SWM strategy for the Hyde Park area.

Linkage to the Corporate Strategic Plan

This recommendation supports the following 2019-2023 Strategic Plan areas of focus:

- Building a Sustainable City:
 - London's infrastructure is built, maintained, and operated to meet the long-term needs of our community by replacing aged and failing infrastructure with new materials and sizing new infrastructure to accommodate future development;
 - Londoners can move around the city safely and easily in a manner that meets their needs by incorporating cycling infrastructure and safety enhancements; and
 - London has a strong and healthy environment by incorporating stormwater management quantity and quantity controls to protect downstream waterways.

Analysis

1.0 Background Information

1.1 Previous Reports Related to this Matter

- Civic Works Committee – November 25, 2013 – Hyde Park Nos. 5 and 6 Stormwater Management Facilities;
- Civic Works Committee – April 7, 2014 – Appointment of Consulting Engineer for Engineering Services for the Functional and Detailed Design of the Hyde Park No. 6 SWMF;
- Civic Works Committee – April 28, 2014 - Appointment of Consulting Engineer for the Engineering Services for the Functional and Detailed Design of the Hyde Park No. 5 SWMF;
- Civic Works Committee – May 24, 2016 – Appointment of Consulting Engineer for the Hyde Park Community Stormwater Servicing Environmental Assessment Addendum Consultant Appointment; and,
- Civic Works Committee – September 25, 2018 – Hyde Park Community Storm Drainage and Stormwater Management Servicing Municipal Class Environmental Assessment Addendum: Schedule B Master Plan Notice of Study Completion.

2.0 Discussion and Considerations

2.1 Work Description

This Consultant assignment includes the detailed design of several components of the stormwater management (SWM) works recommended by the Hyde Park EA Addendum. Appendix 'B' shows the location of the works identified as follows:

1. Hyde Park SWM 1 Retrofit within existing block.
2. Hyde Park SWM 1B1 Retrofit within existing block.
3. Channel Remediation/Realignment from Sarnia Road to Hyde Park 1B1.
4. Trenchless design of a new storm culvert under the CP Rail line connecting the new storm channel (item #3 above) south of the CP Rail to a new inlet into SWM facility 1B1.
5. Decommissioning of the temporary Matthews Hall Subdivision SWM Facility.
6. Incorporation of a multiuse pathway system adjacent to the new channel to be constructed in conjunction with items 3 & 4 above; and,
7. Incorporation of natural channel design within the Sarnia Road channel as well as ecological enhancements to Hyde Park 1 and Hyde Park 1B1 SWM facilities.

All work will be designed and constructed in accordance with the mitigation/compensation plan identified in the Environmental Impact Study (EIS) completed during the EA and additional features identified through this detailed design.

2.2 Public Communications

These identified works will be of high interest to residents. This assignment will utilize a similar public communications approach to the City's Infrastructure Renewal Program and will include project letters that will be sent to area residents and electronic presentations that will be prepared and posted on the City's website. This communication material will inform residents about the project prior to construction and will include project contact information. The communication material will include a summary of the necessary work (e.g. tree removals, channel excavation, etc.) that residents should expect to see.

2.3 Additional Hyde Park Stormwater Management Detailed Design

In addition to the current Assignment 'A', there will also be an Assignment 'B' RFP process that will include the detailed design of the remaining SWM works identified by the Hyde Park EA Addendum. This additional detailed design RFP will be issued in the fall of 2021.

3.0 Financial Impact/Considerations

3.1 Procurement Process

The engineering consultant selection procedure for this assignment utilized a competitive Request for Proposal (RFP) process in accordance with Section 15.2(e) of the Procurement of Goods and Services Policy. Four qualified engineering firms from the City's pre-approved consultant list were invited to submit a formal proposal in response to RFP21-45 Hyde Park SWM Works – Assignment 'A' – Detailed Design tasks identified in the Hyde Park EA Addendum listed in Appendix 'B'.

3.2 Consultant Selection

In accordance with Section 15.2(e) of the Procurement of Goods and Services Policy, Staff recommend that Stantec Consulting Inc. be authorized to carry out the detailed design of the identified components of the Hyde Park EA works.

In addition to being the successful proponent through the competitive bidding process, Stantec Consulting Inc. has formed a proficient project team that has shown their competency and expertise with City infrastructure projects of this nature in the past.

Stantec's proposal was selected as the best value to the City to complete a comprehensive project that recognized all of the design elements for this assignment.

3.3 Funding

The contract administration fee has not been included as part of the current assignment as it was not possible to estimate the number of working days to complete the various works prior to completion of the detailed design. The Consultant will only be asked to submit a work plan for construction administration based on the performance during the detailed design. The fees will then be reviewed in the context of other competitive fees from similar SWM projects and assessed in consideration of clause 15.2 (g) of the Procurement of Goods and Services Policy.

Conclusion

Stantec Consulting Inc. was found to provide the best value to the City through the RFP selection process for consulting services for the detailed design of Hyde Park EA Addendum – Assignment 'A' project. The Stantec team has demonstrated the ability to complete the detailed design tasks required for this project, as well as successful consultation and engagement, and demonstrated a solid understanding of this project in

their proposal. It is recommended that Stantec Consulting Inc. be awarded this assignment.

Prepared by: **Shawna Chambers, DPA, P.Eng., Division Manager,
Stormwater Engineering**

Submitted by: **Scott Mathers, MPA, P.Eng., Director, Water,
Wastewater, and Stormwater**

Recommended by: **Kelly Scherr, P.Eng., MBA, FEC, Deputy City Manager,
Environment and Infrastructure**

Attachments: Appendix 'A' – Sources of Financing
Appendix 'B' – Location Map

CC: Steve Mollon
 Gary McDonald
 Alan Dunbar
 Jason Davies
 Jason Senese
 Jeff Paul - Stantec
 Paul Titus

Appendix "A"

#21144

August 31, 2021

(Appoint Consulting Engineers)

Chair and Members

Civic Works Committee

RE: Hyde Park EA SWM Works - Assignment A Detailed Design

(Subledger SWM21005)

Capital Project ESSWM-HP5 - SWM Facility - Hyde Park No. 5

Stantec Consulting Inc. - \$301,032.57 (excluding HST)

Finance Supports Report on the Sources of Financing:

Finance Supports confirms that the cost of this project can be accommodated within the financing available for it in the Capital Budget and that, subject to the approval of the Deputy City Manager, Environment and Infrastructure, the detailed source of financing is:

Estimated Expenditures	Approved Budget	Committed To Date	This Submission	Balance for Future Work
Engineering	2,134,000	353,664	306,331	1,474,005
Land Purchase	444,700	2,239	0	442,461
Construction	3,927,023	0	0	3,927,023
City Related Expenses	11,977	11,977	0	0
Total Expenditures	\$6,517,700	\$367,880	\$306,331	\$5,843,489

Sources of Financing

Drawdown from Sewage Works Renewal Reserve Fund	289,667	16,350	13,614	259,703
Drawdown from City Services - Stormwater Reserve Fund (Development Charges) (Note 1)	1,916,557	351,530	292,717	1,272,310
Debenture By-law No. W.-5560-200 - Serviced through City Services - Stormwater Reserve Fund (Development Charges) (Note 1)	4,311,476	0	0	4,311,476
Total Financing	\$6,517,700	\$367,880	\$306,331	\$5,843,489

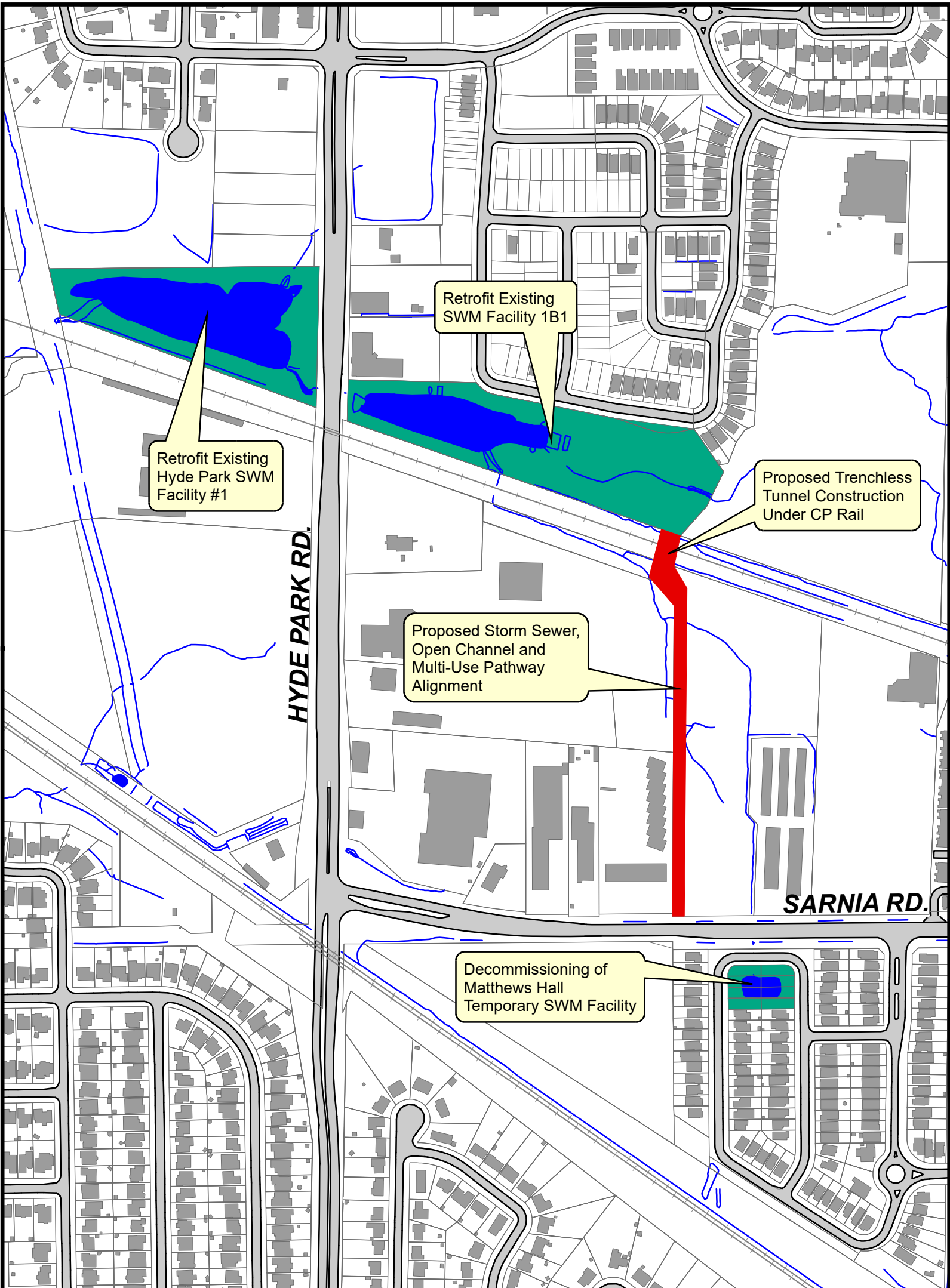
Financial Note:

Contract Price	\$301,033
Add: HST @13%	39,134
Total Contract Price Including Taxes	340,167
Less: HST Rebate	-33,836
Net Contract Price	\$306,331

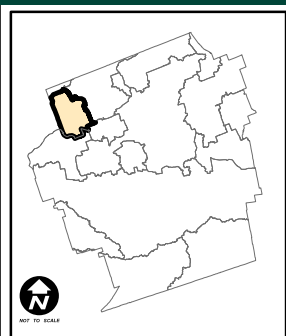
Note 1: Development charges have been utilized in accordance with the underlying legislation and the approved 2019 Development Charges Background Study and the 2021 Development Charges Background Study Update.

Jason Davies
Manager of Financial Planning & Policy

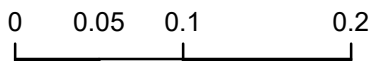
jg



PROJECT LOCATION MAP - APPENDIX 'B'



1:4,500



Kilometers

Legend

- Existing SWM Facilities
- Proposed Storm Sewer, Linear Channel and Tunnel location
- Land Parcel
- Road
- Railroad
- Water Body

Map Produced by the Stormwater Management Division
 300 Dufferin Avenue, PO Box 5035, London, Ontario N6A 4L9
www.London.ca