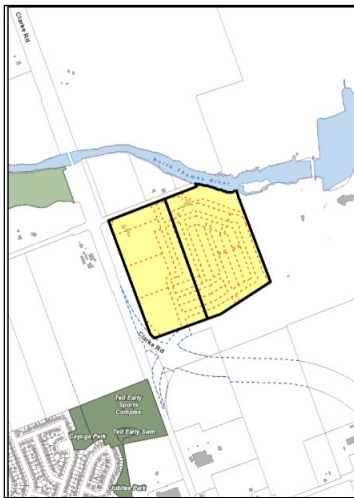




# NOTICE OF PLANNING APPLICATION

## Revisions to Application for Draft Plan of Subdivision, Official Plan and Zoning By-law Amendments

### 2331 Kilally Road and 1588 Clarke Road



**File: 39T-20502 / OZ-9244**

**Applicant: Sifton Properties Limited**

#### What is Proposed?

Draft Plan of Subdivision, Official Plan and Zoning amendments to allow:

- A residential subdivision consisting of low density single detached dwellings, medium density cluster dwellings, street townhouse dwellings, low-rise apartment buildings, parks, open spaces, multi-use pathways and stormwater management facility; served by five (5) local streets.



## LEARN MORE & PROVIDE INPUT

Please provide any comments by **July 30, 2021**

Larry Mottram

[lmottram@london.ca](mailto:lmottram@london.ca)

519-661-CITY (2489) ext. 4866

Development Services, City of London, 300 Dufferin Avenue, 6<sup>th</sup> Floor,  
London ON PO BOX 5035 N6A 4L9

File: 39T-20502 / OZ-9244

[london.ca/planapps](https://london.ca/planapps)

You may also discuss any concerns you have with your Ward Councillor:

Councillor Mohamed Salih

[msalih@london.ca](mailto:msalih@london.ca)

519-661-2489 ext. 4003

**If you are a landlord, please post a copy of this notice where your tenants can see it.  
We want to make sure they have a chance to take part.**

Date of Notice: July 6, 2021

# Application Details

Commonly Used Planning Terms are available at [london.ca/planapps](http://london.ca/planapps).

## Requested Revisions to Draft Plan of Subdivision

A previous notice was given by mail on August 18, 2020 advising of the application for Draft Plan of Subdivision, Official Plan and Zoning By-law Amendments. Revisions to the proposed subdivision design have been submitted by the applicant and are summarized as follows:

- The subdivision's internal road network has been redesigned to shift the location of the southern access further west and outside of the Fanshawe Conservation Area lands;
- The northern entrance has shifted further west to allow for placement of a park block in the northeastern part of the subdivision;
- The low-density residential portions of the subdivision are shown as blocks rather than lots. The actual lots will be created through registration of future phases, or through a future application for exemption from part lot control;
- The proposed Stormwater Management (SWM) block has shifted to the west, with the proposed location generally aligning with the SWM block shown in the Kilally South, East Basin EA;
- The proposed Thames Valley Parkway (TVP) extension has been removed from the ESA buffer area, and now runs along Street C to avoid environmentally sensitive areas;
- The 15 metre parkland access block north of Street C has been removed and absorbed into Block 2; and,
- The proposed TVP extension now exits the subdivision at Clarke Road, rather than continuing onto Fanshawe Conservation Area lands.

Consideration of a Draft Plan of Subdivision consisting of 16 low density residential blocks (Blocks 1-16); five (5) medium density residential blocks (Blocks 17-21); two (2) park blocks (Blocks 22-23); two (2) blocks for Stormwater Management (SWM) Pond and Sanitary Pump Station (Blocks 24-25); two (2) road reserve blocks (Blocks 26-27); one (1) open space buffer block (Block 28); one (1) open space block (Block 29); serviced by five (5) local streets (Streets A, B, C, D, & E). (please refer to attached draft plan)

## Requested Official Plan Amendments (please refer to attached map)

Possible Amendments to the (1989) Official Plan:

- Schedule 'A' – Land Use Map to change the land use designations from: "Urban Reserve – Community Growth", "Environmental Review", and "Open Space" to "Low Density Residential", "Multi-Family, Medium Density Residential" and "Open Space";
- Schedule 'B-1' – Natural Heritage Features Map to change the limits of the "Potential ESA" and "Max Hazard Line" delineations to reflect the findings of the Environmental Impact Study and Slope Stability Study; and,
- Schedule 'C' - Transportation Corridors Map to remove the "Proposed Future Arterial Road" delineation that applies to Kilally Road, approximately 200 metres east of Clarke Road.

Possible Amendments to The London Plan:

- Map 5 – Natural Heritage to revise the limits of the ESA to reflect the findings of the Environmental Impact Study (EIS) completed in support of the proposed Draft Plan of Subdivision application.

## Requested Zoning By-law Amendment

Changes to the currently permitted land uses and development regulations are summarized below. The complete Zoning By-law is available at [london.ca/planapps](http://london.ca/planapps).

### Requested Zoning (Please refer to attached map)

Possible Amendment to Zoning By-law Z.-1 to change the zoning from an Urban Reserve UR4 Zone, an Urban Reserve UR4/Temporary (T-56) Zone, a Holding Urban Reserve (h-2•UR4), and an Open Space OS5 Zone to:

- Residential R1 (R1-3) Zone – to permit single detached dwellings on lots with a minimum lot area of 300 square metres and minimum lot frontage of 10 metres;
- Residential R1 (R1-4) Zone - to permit single detached dwellings on lots with a minimum lot area of 360 square metres and minimum lot frontage of 12 metres;
- Residential R1 Special Provision (R1-4(21)) Zone – to permit single detached dwellings on lots with a minimum lot area of 360 square metres and minimum lot frontage of 12 metres, together with a special provision for a dwelling setback from a high pressure pipeline of 20 metres (minimum);

- Residential R1/Residential R4 Special Provision (R1-1/R4-6(\*)) Zone – to permit single detached dwellings on lots with a minimum lot area of 250 square metres and minimum lot frontage of 9 metres, and to permit street townhouses with a minimum lot area of 145 square metres per unit and a minimum lot frontage of 5.5 metres per unit, together with a special provision for a lot coverage of 50 percent (maximum);
- Residential R5/Residential R6/Residential R7/Residential R8 (R5-7/R6-5/R7•H13•D75/R8-4) Zone – to permit such uses as townhouses and stacked townhouses up to a maximum density of 60 units per hectare and maximum height of 12 metres; various forms of cluster housing including single detached, semi-detached, duplex, triplex, fourplex, townhouse, stacked townhouse, and apartment buildings up to a maximum density of 35 units per hectare and maximum height of 12 metres; senior citizen apartment buildings, handicapped persons apartment buildings, nursing homes, retirements lodges, continuum-of-care facilities, and emergency care establishments up to a maximum density of 75 units per hectare and maximum height of 13 metres; apartment buildings, stacked townhouses, and lodging house class 2 up to a maximum density of 75 units per hectare and maximum height of 13 metres.
- Open Space OS1 Zone – to permit such uses as conservation lands, conservation works, golf courses, public and private parks, recreational buildings associated with conservation lands and public parks, campgrounds, and managed forests;
- Open Space OS1(3) Special Provision Zone – to permit conservation lands, conservation works, golf courses, public and private parks, recreational buildings associated with conservation lands and public parks, campgrounds, and managed forests, together with a special provision for no minimum lot frontage or minimum lot area requirement; and,
- Open Space OS5(3) Special Provision Zone – to permit conservation lands, conservation works, passive recreation uses which include hiking trails and multi-use pathways, and managed woodlots, together with a special provision for no minimum lot frontage or minimum lot area requirement.

An amendment to Subsection 4.21 of the Zoning By-law General Provisions is also requested to amend the street classification of Kilally Road, 200 metres east of Clarke Road, from a 'Proposed Arterial' to 'Local Road', and amend the road allowance limit as measured from the centre line from 18 metres to 10 metres to reflect existing conditions (the steep slopes and vegetation on the north side of Kilally Road will impede any road-widening plans), and to be consistent with the transportation network vision established in The London Plan.

The City may also consider applying holding provisions in the zoning to ensure adequate provision of municipal services, that a subdivision agreement or development agreement is entered into, and to ensure completion of noise assessment reports and implementation of mitigation measures for development in proximity to arterial roads.

An Environmental Impact Study (EIS) report prepared by AECOM, dated March 2020, and an Environmental Impact Study (EIS) Addendum, dated March 2021, were submitted with the application for draft plan of subdivision. The EIS reports are available by contacting the City's Planner listed on the first page of this notice.

## **Planning Policies**

Any change to the Zoning By-law must conform to the policies of the Official Plan, London's long-range planning document. These lands are currently designated as "Urban Reserve – Community Growth", "Environmental Review" and "Open Space". The land use designations in the (1989) Official Plan are subject to possible amendment, as described above.

The subject lands are in the "Neighbourhoods" Place Type in The London Plan (Council adopted, approved by the Ministry with modifications, and the majority of which is in force and effect) permitting a range of housing including single detached dwellings, townhouses and low rise apartments; and "Green Space", permitting a range of public and private open space, parks, recreation, floodplain and conservation uses.

## **How Can You Participate in the Planning Process?**

You have received this Notice because someone has applied for a Draft Plan of Subdivision and to change the Official Plan designation and zoning of land located within 120 metres of a property you own, or your landlord has posted the notice of application in your building. The City reviews and makes decisions on such planning applications in accordance with the requirements of the *Planning Act*. The ways you can participate in the City's planning review

and decision-making process are summarized below. For more detailed information about the public process, go to the [Participating in the Planning Process](#) page at [london.ca](#).

## See More Information

You can review additional information and material about this application by:

- contacting the City's Planner listed on the first page of this Notice; or
- viewing the application-specific page at [london.ca/planapps](#).

## Reply to this Notice of Application

We are inviting your comments on the requested changes at this time so that we can consider them as we review the application and prepare a report that will include Development Services staff's recommendation to the City's Planning and Environment Committee. Planning considerations usually include such matters as land use, development intensity, and form of development.

## Attend a Future Public Participation Meeting

The Planning and Environment Committee will consider the requested Draft Plan of Subdivision, Official Plan and zoning changes on a date that has not yet been scheduled. The City will send you another notice inviting you to attend this meeting, which is required by the *Planning Act*. You will also be invited to provide your comments at this public participation meeting. The Planning and Environment Committee will make a recommendation to Council, which will make its decision at a future Council meeting. The Council Decision will inform the decision of the Director, Development Services, who is the Approval Authority for Draft Plans of Subdivision.

## What Are Your Legal Rights?

### Notification of Council and Approval Authority's Decision

If you wish to be notified of the Approval Authority's decision in respect of the proposed draft plan of subdivision, you must make a written request to the Director, Development Services, City of London, 300 Dufferin Ave., P.O. Box 5035, London ON N6A 4L9, or at [developmentsservices@london.ca](mailto:developmentsservices@london.ca). You will also be notified if you provide written comments, or make a written request to the City of London for conditions of draft approval to be included in the Decision.

If you wish to be notified of the decision of the City of London on the proposed official plan amendment and zoning by-law amendment, you must make a written request to the City Clerk, 300 Dufferin Ave., P.O. Box 5035, London, ON, N6A 4L9, or at [docservices@london.ca](mailto:docservices@london.ca). You will also be notified if you speak to the Planning and Environment Committee at the public meeting about this application and leave your name and address with the Secretary of the Committee.

### Right to Appeal to the Local Planning Appeal Tribunal

If a person or public body does not make oral submissions at a public meeting, if one is held, or make written submissions to the City of London in respect of the proposed plan of subdivision before the approval authority gives or refuses to give approval to the draft plan of subdivision, the person or public body is not entitled to appeal the decision of the Director, Development Services to the Local Planning Appeal Tribunal.

If a person or public body does not make oral submissions at a public meeting, if one is held, or make written submissions to the City of London in respect of the proposed plan of subdivision before the approval authority gives or refuses to give approval to the draft plan of subdivision, the person or public body may not be added as a party to the hearing of an appeal before the Local Planning Appeal Tribunal unless, in the opinion of the Tribunal, there are reasonable grounds to do so.

If a person or public body would otherwise have an ability to appeal the decision of the Council of the Corporation of the City of London to the Local Planning Appeal Tribunal but the person or public body does not make oral submissions at a public meeting or make written submissions to the City of London before the proposed official plan amendment is adopted, or before the zoning by-law amendment is passed, the person or public body is not entitled to appeal the decision.

If a person or public body does not make oral submissions at a public meeting or make written submissions to the City of London before the proposed official plan amendment is adopted, or before the zoning by-law amendment is passed, the person or public body may not be added as a party to the hearing of an appeal before the Local Planning Appeal Tribunal unless, in the

opinion of the Tribunal, there are reasonable grounds to add the person or public body as a party.

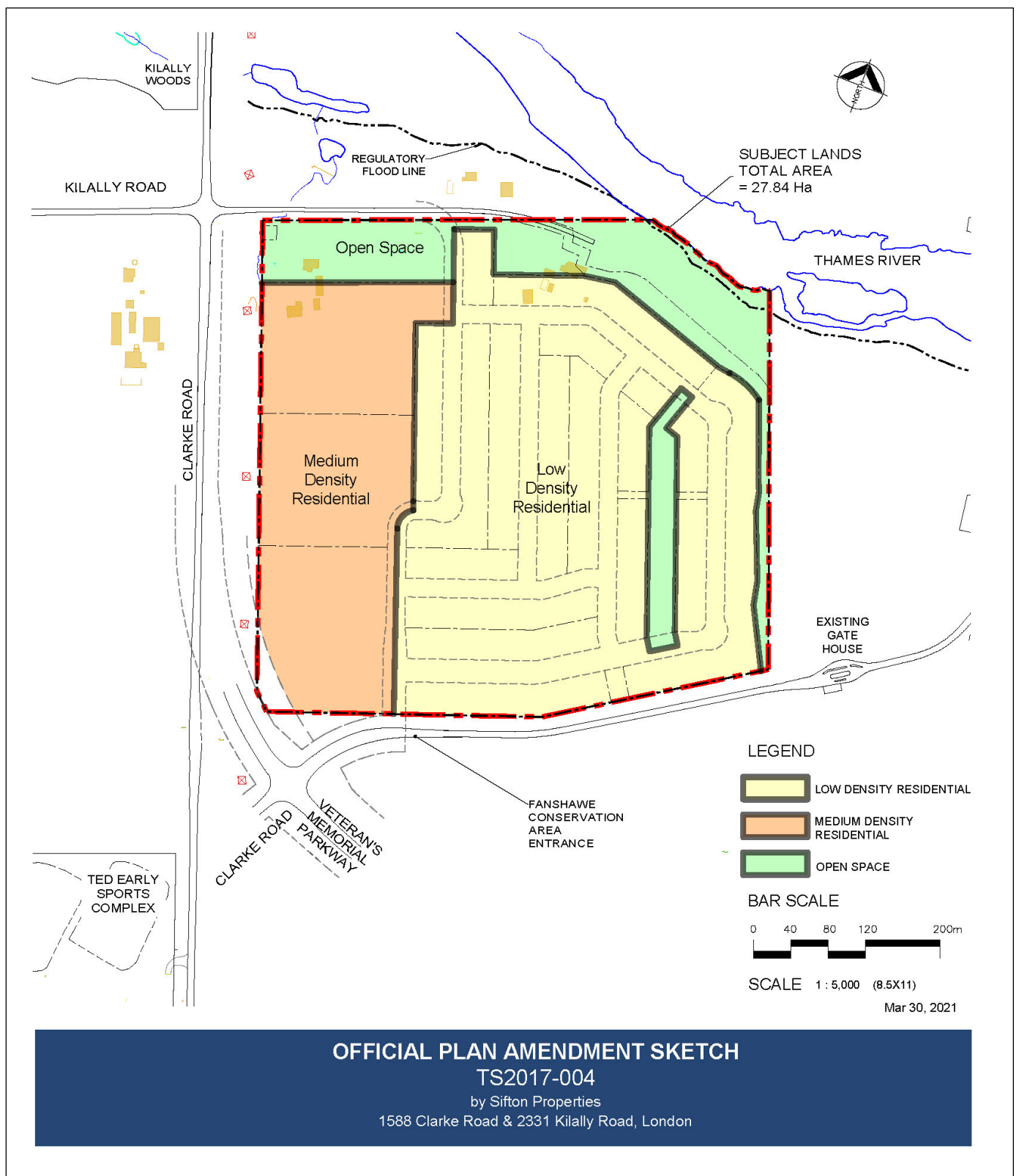
For more information go to <http://elto.gov.on.ca/tribunals/lpat/about-lpat/>.

### Notice of Collection of Personal Information

Personal information collected and recorded at the Public Participation Meeting, or through written submissions on this subject, is collected under the authority of the *Municipal Act*, 2001, as amended, and the *Planning Act*, 1990 R.S.O. 1990, c.P.13 and will be used by Members of Council and City of London staff in their consideration of this matter. The written submissions, including names and contact information and the associated reports arising from the public participation process, will be made available to the public, including publishing on the City's website. Video recordings of the Public Participation Meeting may also be posted to the City of London's website. Questions about this collection should be referred to Cathy Saunders, City Clerk, 519-661-CITY(2489) ext. 4937.

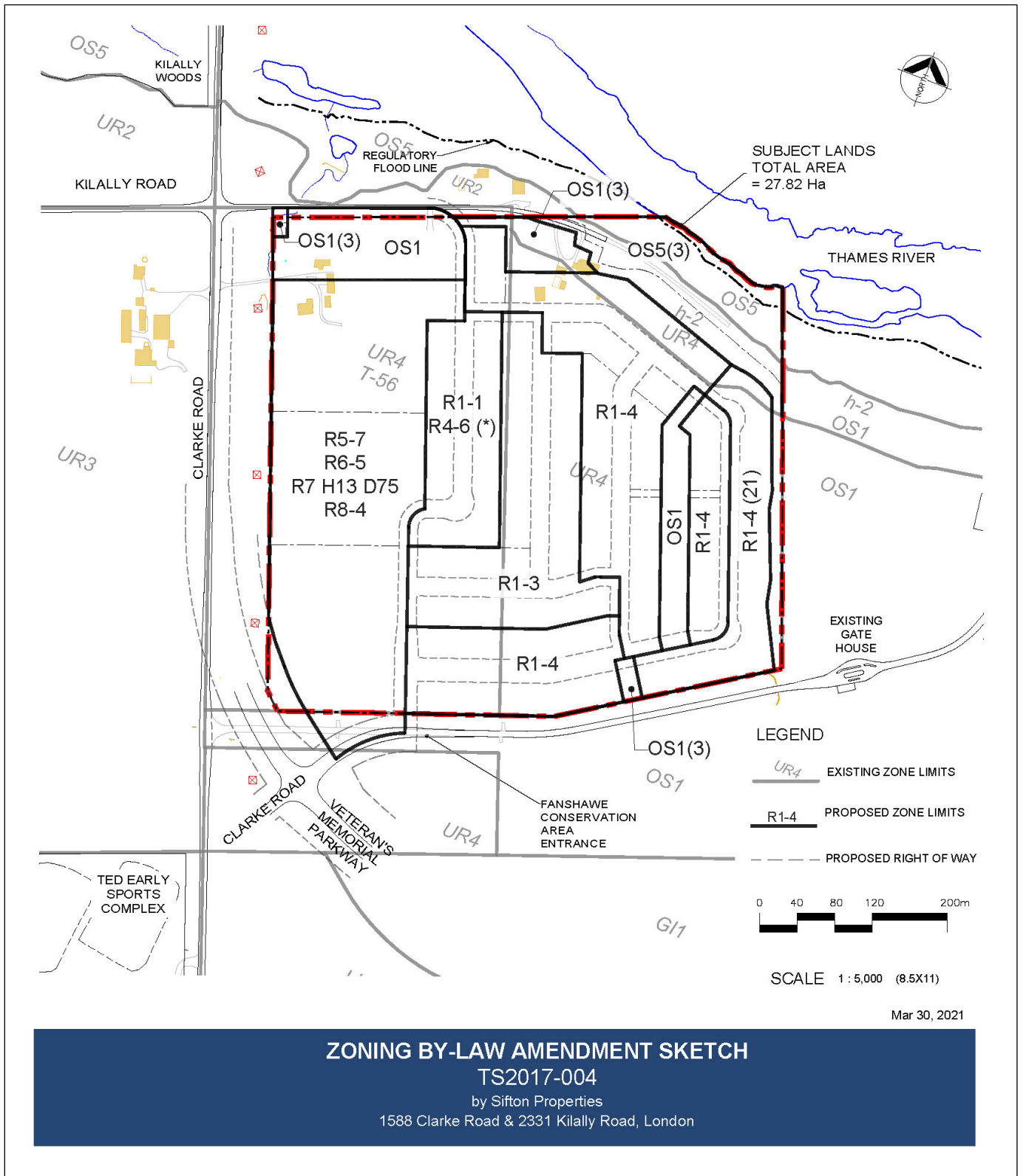
**Accessibility – Alternative accessible formats or communication supports are available upon request. Please contact [developmentsservices@london.ca](mailto:developmentsservices@london.ca) for more information.**

## Requested Official Plan Designations



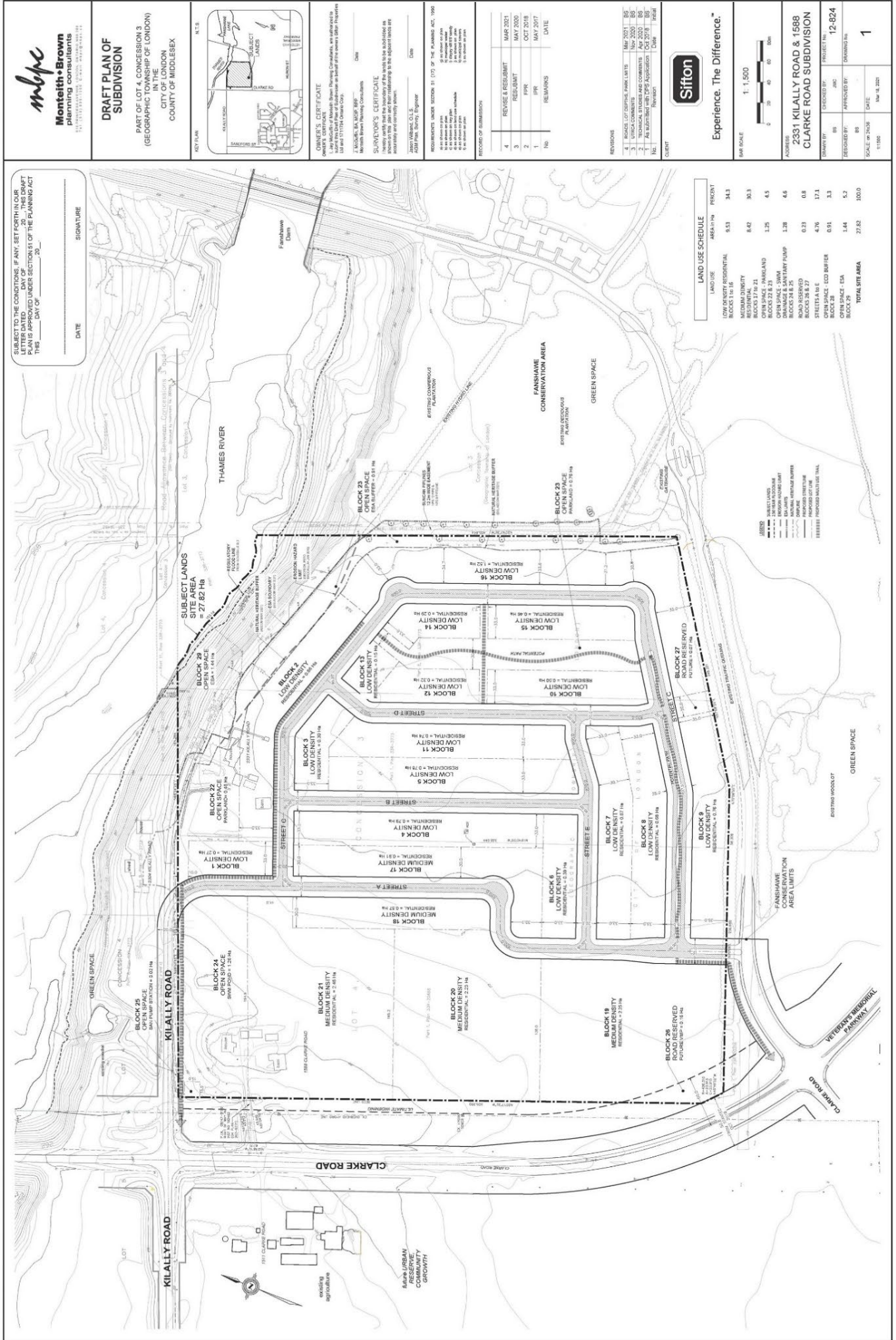
The above image represents the applicant's proposal as submitted and may change.

# Requested Zoning



The above image represents the applicant's proposal as submitted and may change.

# Requested Draft Plan of Subdivision



The above image represents the applicant's proposal as submitted and may change.