

*Medway Valley Heritage
Forest ESA (South)
Conservation Master Plan
and related Amendments
(0Z-9367)*

Planning and Environment Committee
July 26, 2021



London
CANADA

Conservation Master Plan Process

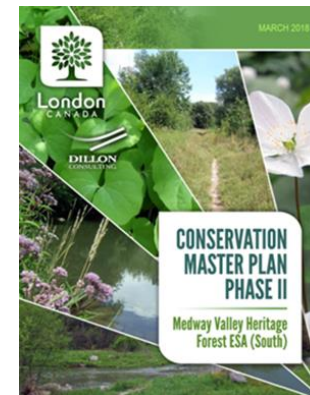
Phase 1

Community Engagement and Participation
Life Science Inventory and Evaluation
Boundary Delineation
Application of Management Zones and Review of Existing Trails
Identification of Management Issues



Phase 2

Community Engagement and Participation
Goals, Objectives and Recommendations
Ecological Protection, Enhancement and Restoration
Trail Planning and Design Process
Priorities for Implementation
Final Conservation Master Plan





Previous Milestones and Public Engagement

Phase 1 2013 - 2017

- 2 Community Open Houses
- Approval of *Guidelines for Management Zones and Trails in ESAs* (2016)
- 2 rounds of comments from EEPAC/ Nature London

Council Approved Phase 1 Report and Addendum.

Phase 2 2017 - 2018

- 5 Meetings with the Local Advisory Group
- Public Consultation via web survey, mapping tool, 2 Community Open Houses
- 2 presentations to EEPAC/ ACCAC

Council Referred CMP back to City Staff.

Phase 2 (cont.) 2019 - 2021

- 5 Meetings with ACCAC/EEPAC/UTRCA
- 3 Meetings with First Nations Communities
- Public Consultation; Website, 1 Virtual Community Meeting
- 2 presentations to EEPAC/ ACCAC

Public Participation Meeting for the 2021 CMP at Planning and Environment Committee.

- a) the Conservation Master Plan (CMP) for the Medway Valley Heritage Forest Environmentally Significant Area (South) (ESA), appended to the staff report dated April 16, 2018, **BE REFERRED** back to the Civic Administration to report back at a future meeting of the Planning and Environment Committee, after undertaking the following actions:
- ✓ i) deleting proposed bridge A from the CMP;
 - ✓ ii) deleting the proposed bridge D from the CMP;
 - ✓ iii) undertaking further public consultation with respect to those portions of the CMP that effect changes to the eastern boundary of the ESA, including the use of public streets;
 - ✓ iv) undertaking further consultation with the Accessibility Advisory Committee (ACCAC), the Environmental and Ecological Planning Advisory Committee (EEPAC), the Upper Thames River Conservation Authority and neighbouring First Nations Governments and Organizations with respect to improved trail access and conditions;
 - ✓ v) Actions be taken to discourage crossings of the creek at sites A, B, C, D and E, as identified in the CMP;
 - ✓ vi) Hardscaped surfaces on the level 2 trails be limited to the greatest extent possible;



2018 Council Referral

- ✓ b) staff **BE DIRECTED** to work with our community partners in the implementation of the CMP with regard to external funding opportunities.

- d) the Civic Administration **BE DIRECTED** to report back on the following matters with respect to the Medway Valley Heritage Forest Environmentally Significant Area (south) Conservation Master Plan:
 - ✓ i) ways to improve the public consultation process for any Environmentally Significant Areas and Conservation Master Plans; and,
 - ✓ ii) amending the Trail Management Guidelines to incorporate consultation with neighbouring First Nations, Governments and Organization at the beginning of the process;



London
CANADA

Sustainable Trail Concept Plan



CITY OF LONDON
CONSERVATION MASTER PLAN
MEDWAY VALLEY HERITAGE FOREST ESA (SOUTH)

FIGURE 4
ENVIRONMENTAL MANAGEMENT STRATEGY:
PROPOSED SUSTAINABLE TRAIL
CONCEPT PLAN

<ul style="list-style-type: none"> Metamora Bridge Proposed Trail Linkage (Snake Creek) Trail Closed Barricade Seasonal Barrier / Access Gate A # Access Point 	<ul style="list-style-type: none"> Existing Trails City Pathway/Trail Outside of the ESA Closed Trail Informal Trail¹ Managed Trail Temporarily Closed Trail² 	<ul style="list-style-type: none"> Managed Trails Level One Trail Level Two Trail Level Three Trail Contour (5 metre Elevation) Property Boundaries Utility Overlay (4 m) Western/Huron Properties Watercourse (also Nature Reserve) 	<ul style="list-style-type: none"> Management Zone Nature Reserve Natural Environment
---	---	---	--



MAP DRAWING INFORMATION:
DATA PROVIDED BY: MHF (2017) &
CITY OF LONDON (2018)

MAP CREATED BY: GML/JK
MAP CHECKED BY: JLP
MAP PROJECTION: NAD 1983 UTM Zone 17N



¹ INFORMAL AND CLOSED EXISTING TRAILS DOCUMENTED DURING PHASE I ARE TO BE CLOSED AND RESTORED (SEE R016 ON FIGURE 2).
² TEMPORARILY CLOSED TRAIL TO BE REOPENED/ REALIGNED. SECTIONS NOT REALIGNED WILL BE CLOSED AND RESTORED

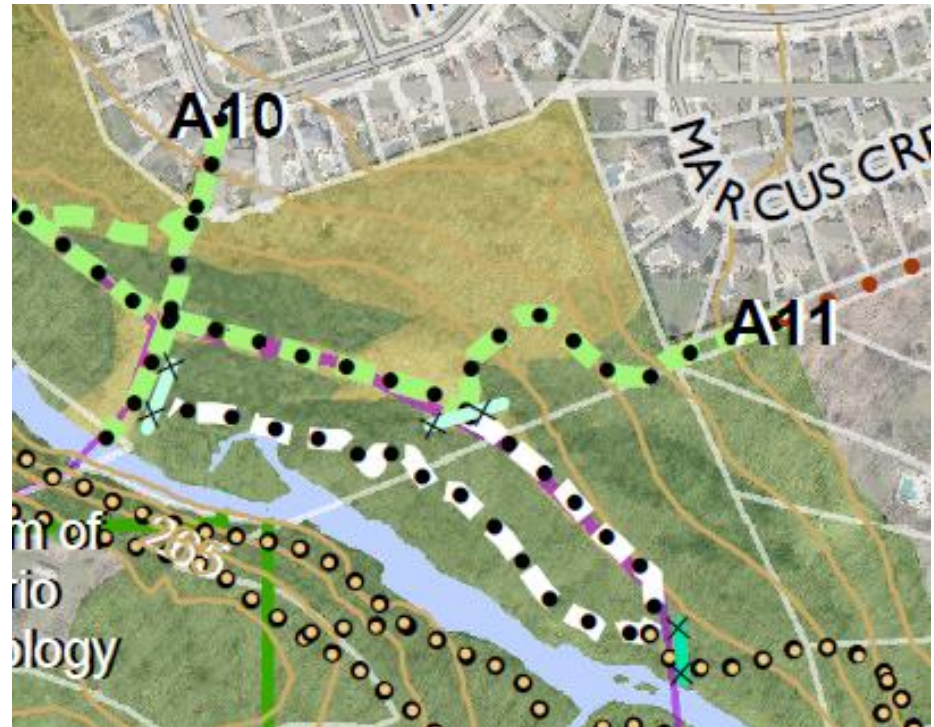


Key Considerations

- Resolve the 2018 Council Referral Items
- Protect rare plant species and sensitive features
- Discourage trails that lead users to trespass on private property
- Avoid Level 2/3 trails within erosional hazards to the greatest extent
- Provide the greatest amount of access where feasible so that users have appropriate trail options and know where to go

Glenridge to Marcus (A10 to A11)

- Seasonal Closure of Level 1 trail to protect rare plant species
- Level 2 trail through remainder of segments to increase appropriate access
- Restricted access along eastern bank



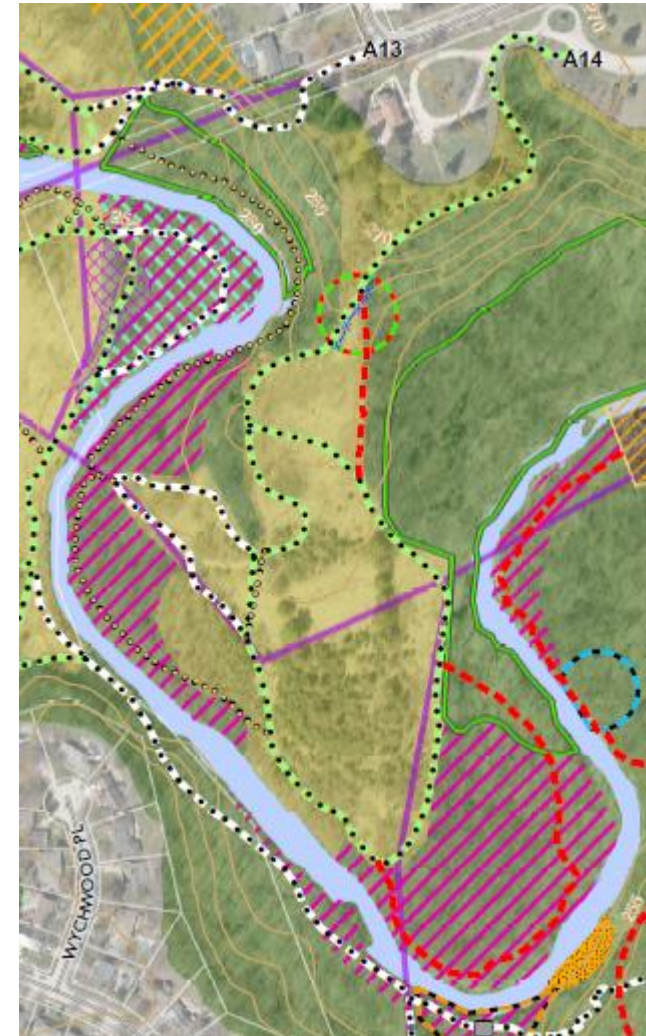
Gloucester to Windermere (A12 to A13)

- Closure of Level 1 to restrict access along eastern bank
- Level 2 trail through remainder of segments to increase appropriate access
- Deferral of trail segment to Access 12 for further technical review



Elsie Perrin Williams (A14)

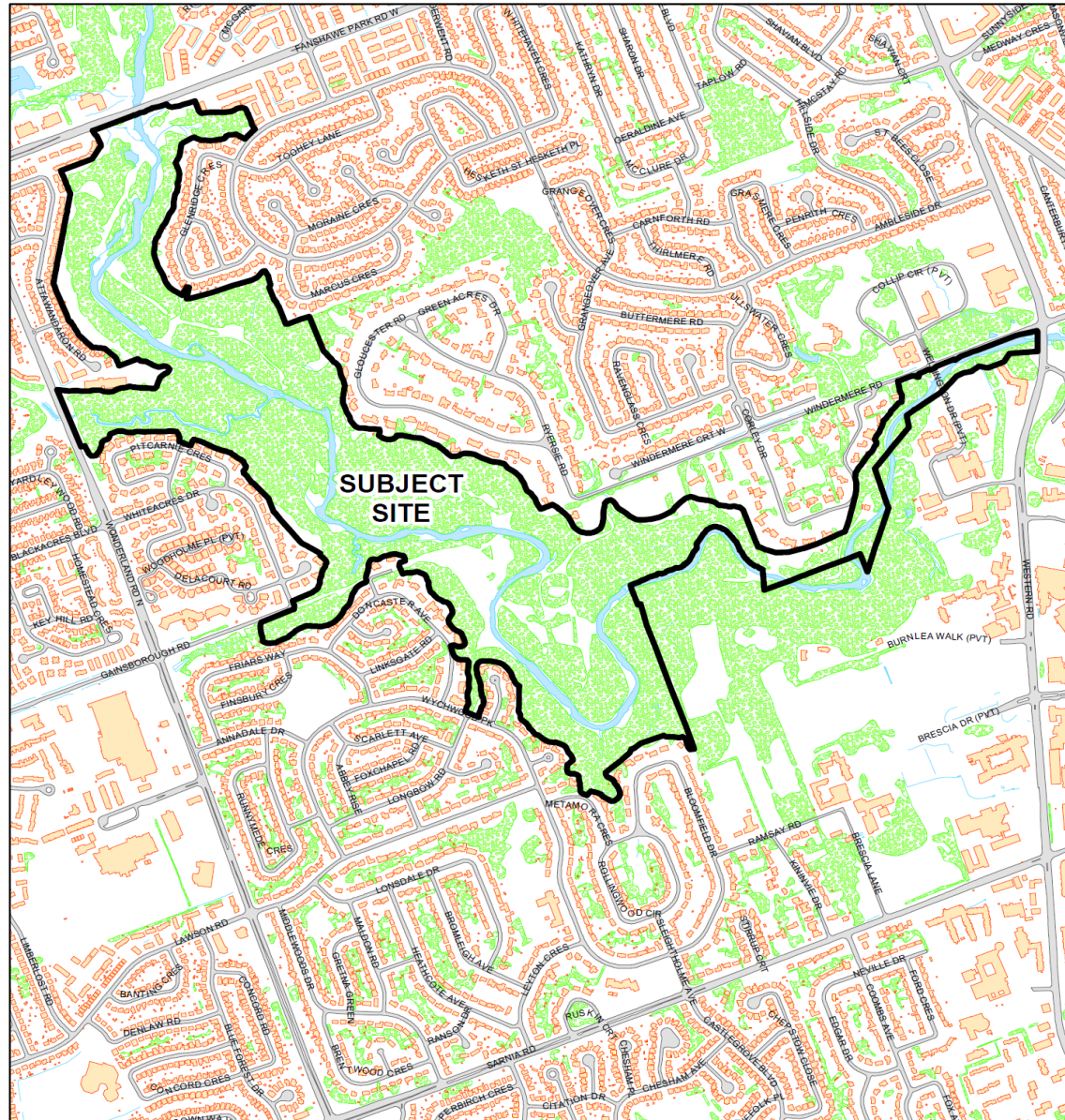
- Rerouting of trail and trailside barricade to avoid a rare tree
- Level 1 trail adjacent to rare plant community
- Complete Level 2 loop



Planning Amendments

1. Amendments to add the CMP as a Guideline document to the London Plan and 1989 Official Plan.
2. Mapping Amendments to align with CMP:
 - London Plan
 - Map 1 – Place Types
 - Map 5 – Natural Heritage
 - 1989 Official Plan
 - Schedule A – Land Use
 - Schedule B1 – Natural Heritage Features

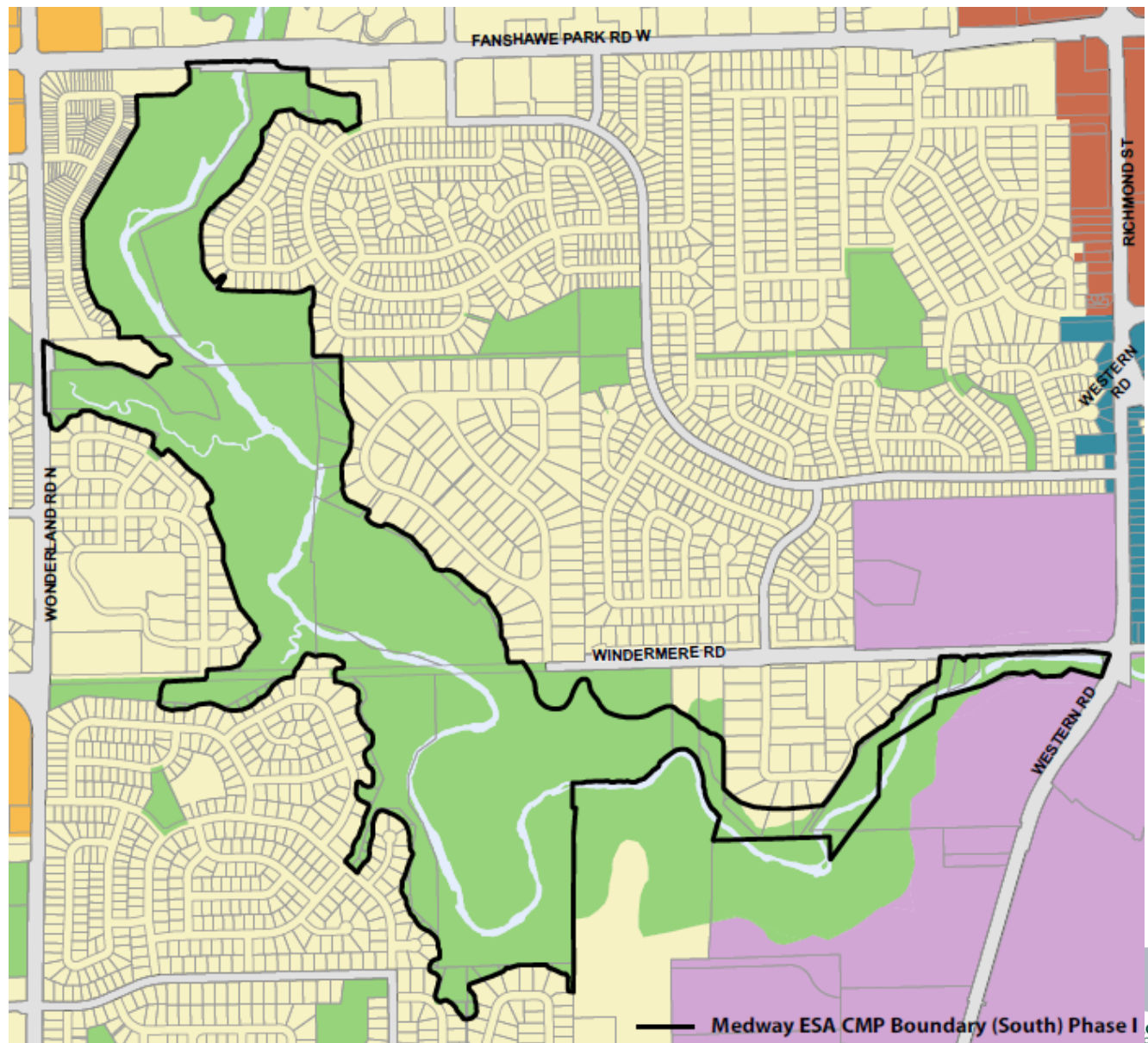
Subject Site for Mapping Amendments



London Plan: Map 1-Place Types

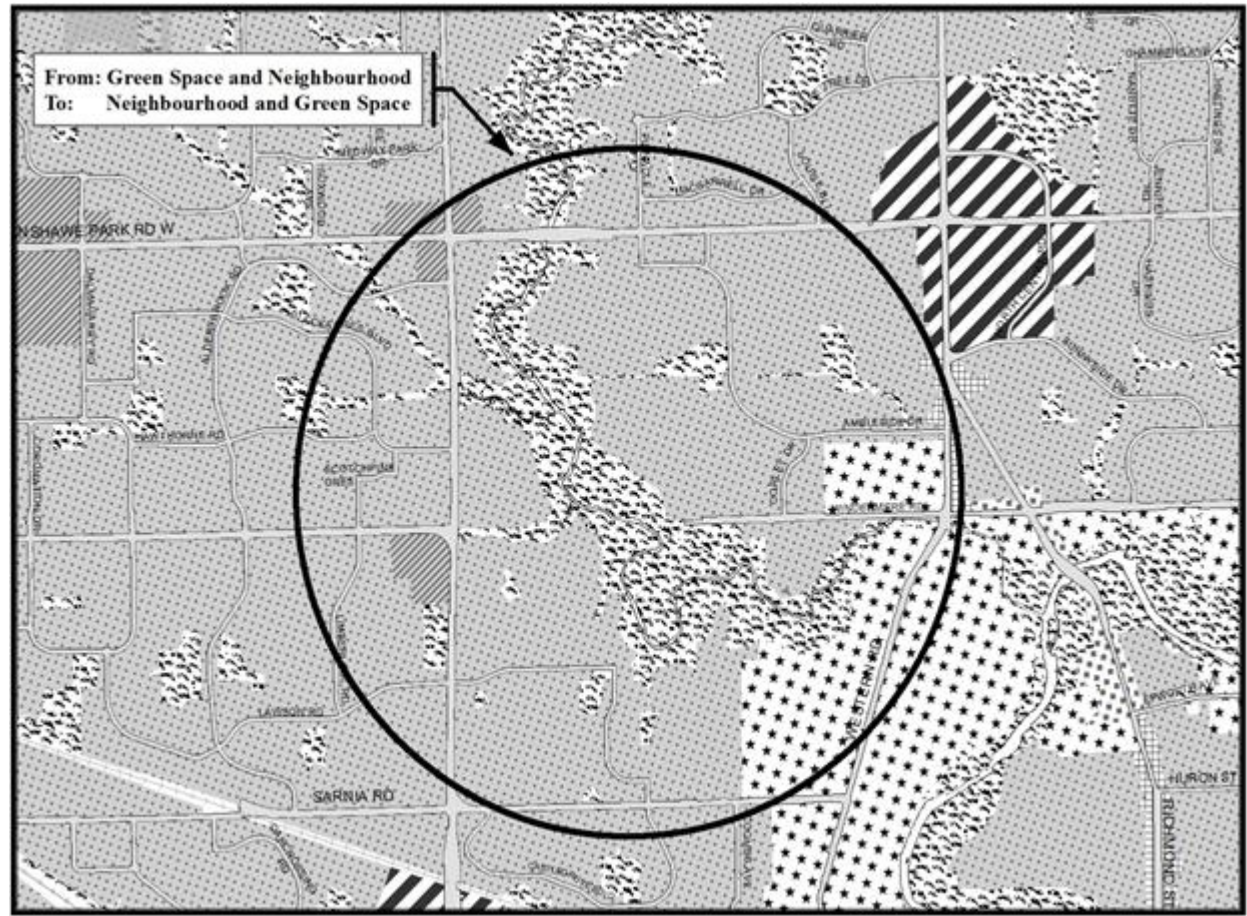
Shows ESA delineation overlay on existing Map 1.

Amendment is to have Green Space Place Type conform to the CMP.



London Plan: Map 1-Place Types

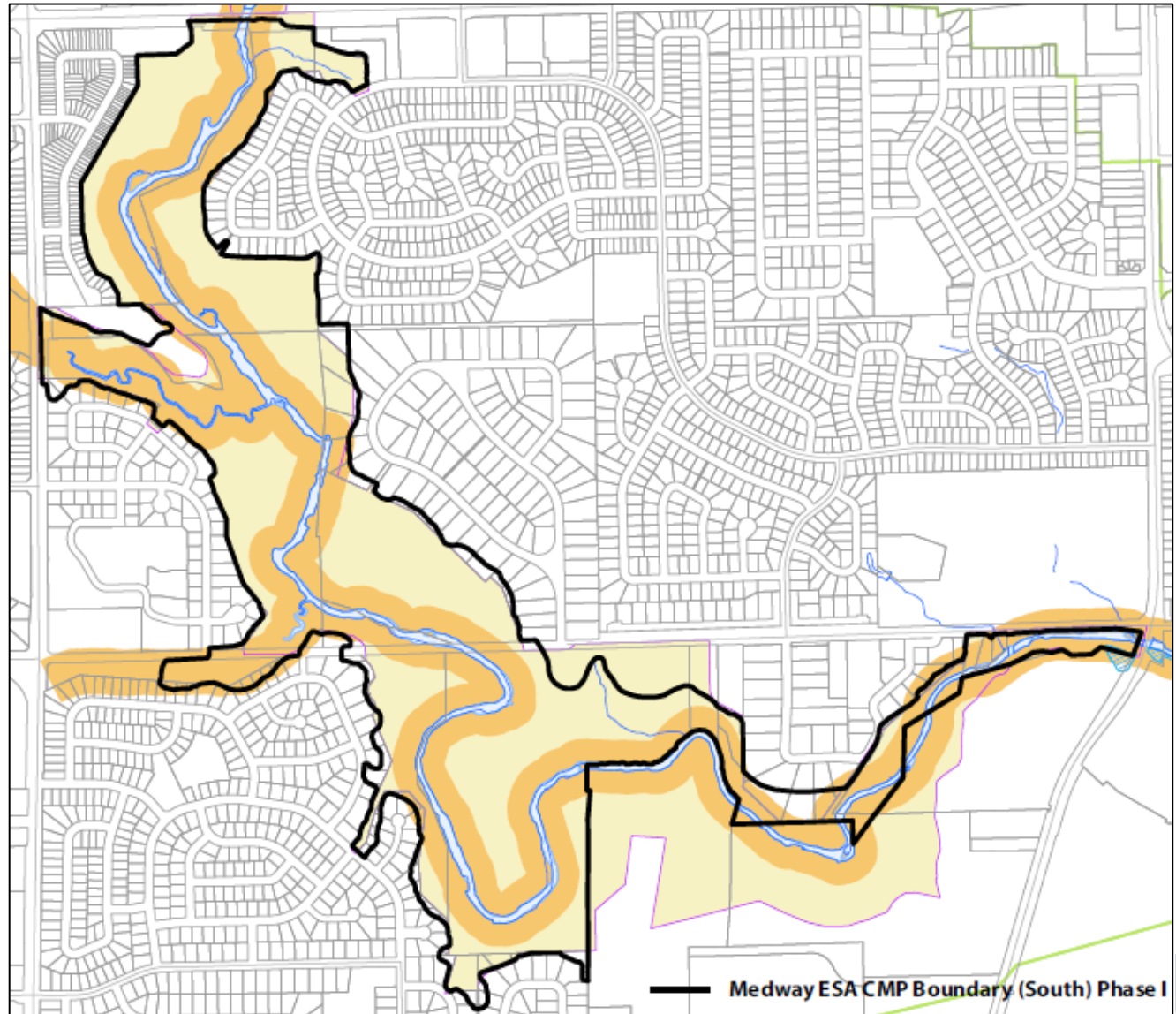
Recommended
Amendment
Map: Map 1



London Plan: Map 5-Natural Heritage

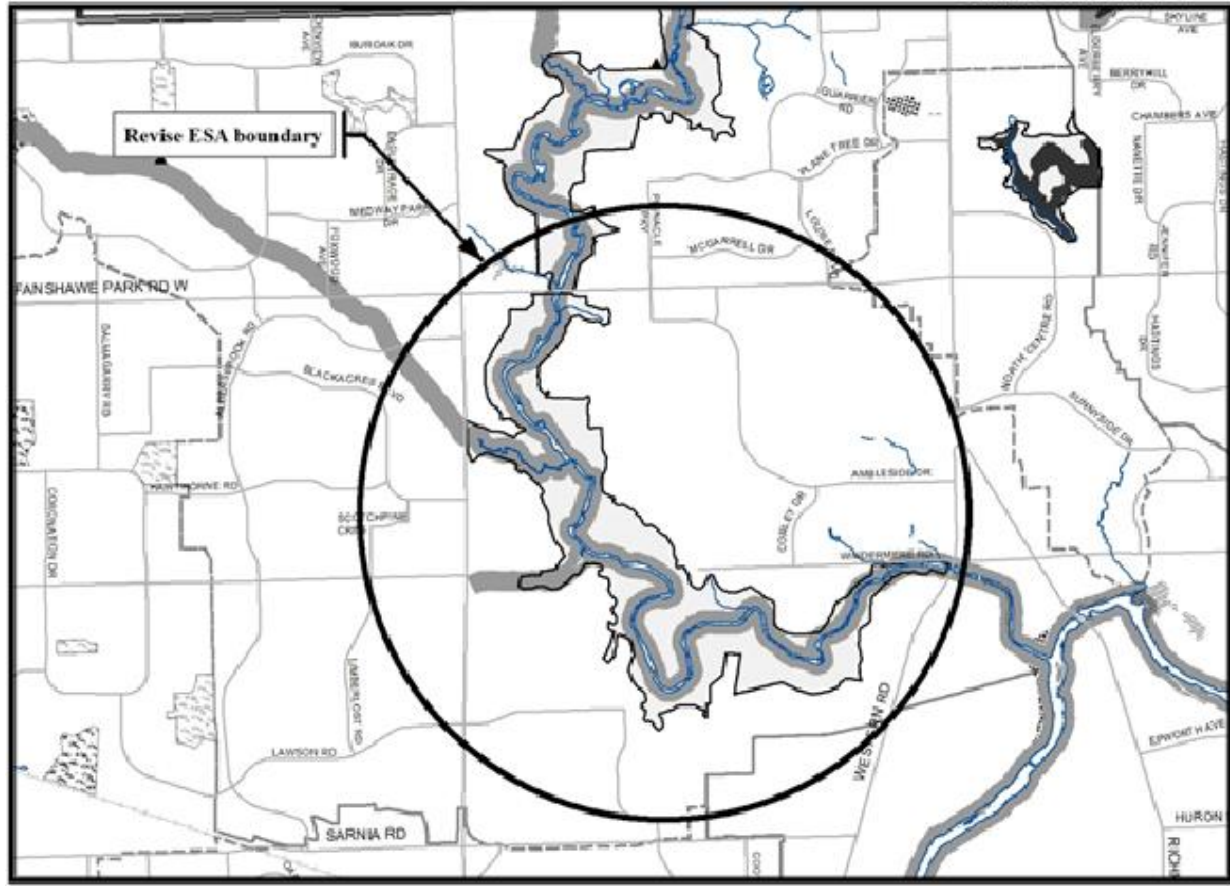
Delineation
overlay on
existing Map 5

Recommended
amendment is
for ESA feature
on Map 5 to
conform to the
CMP.



London Plan: Map 5-Natural Heritage

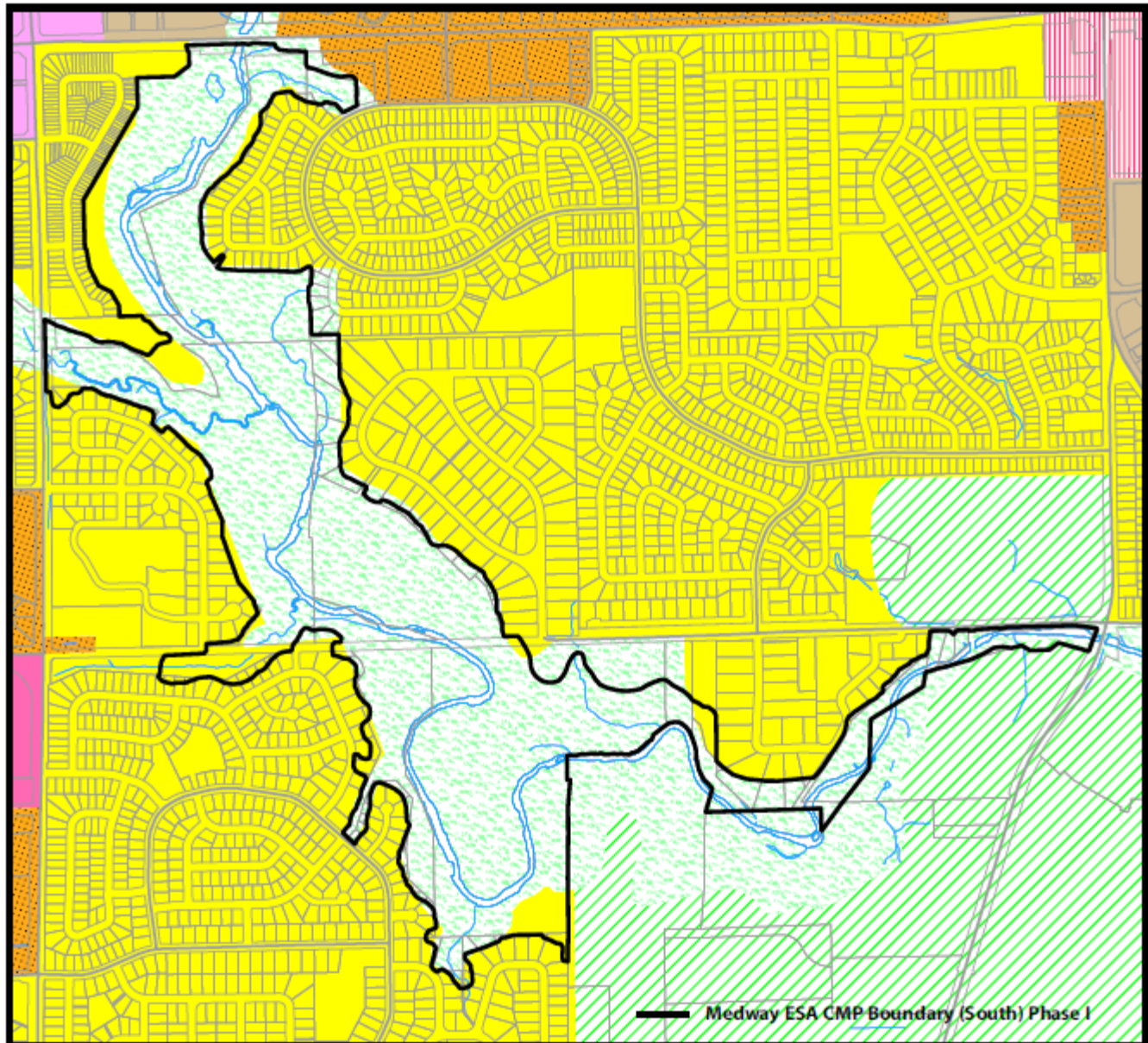
Recommended
Amendment
Map: Map 5



1989 OP: Schedule “A” – Land Use

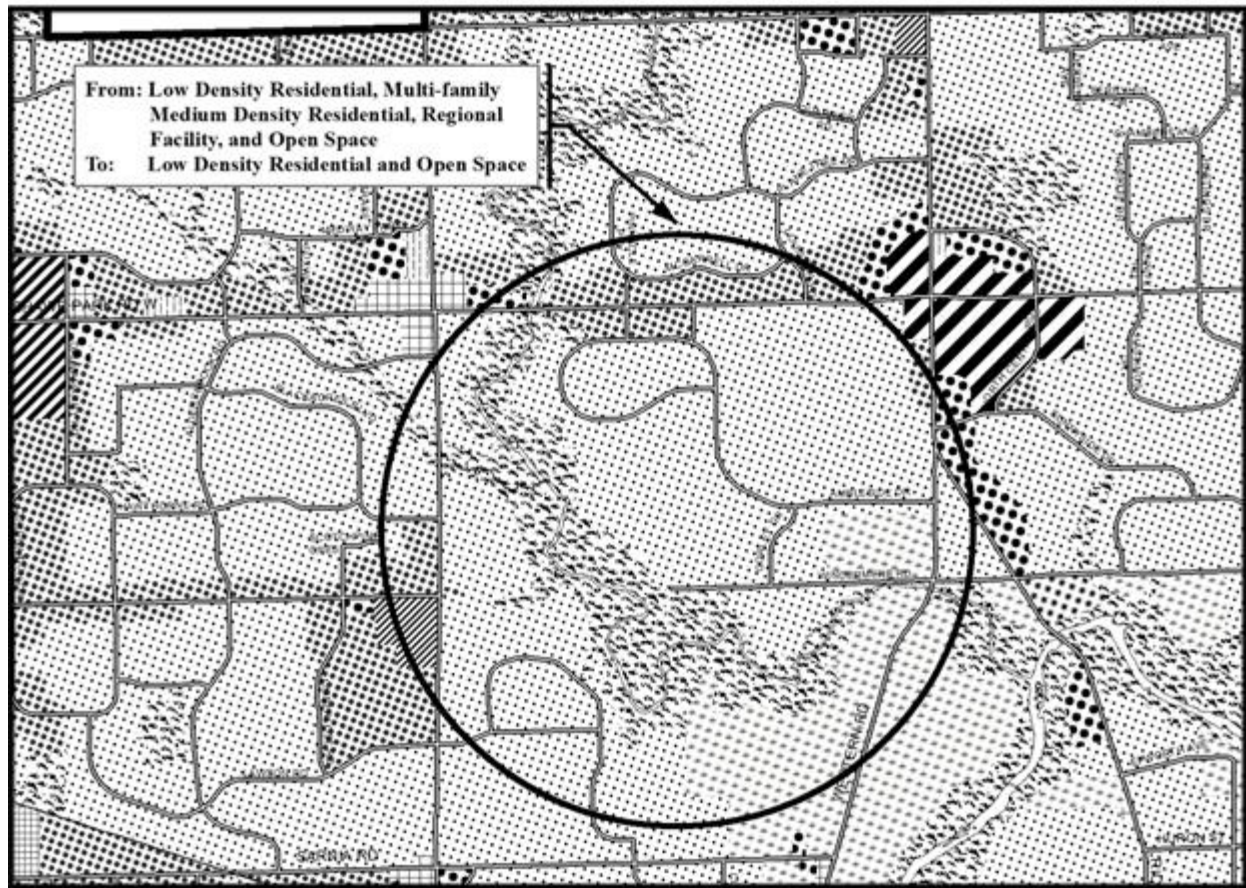
Delineation overlay on existing Schedule A of 1989 OP.

Recommended amendment is for Open Space designation to conform to the CMP.



1989 OP: Schedule "A" – Land Use

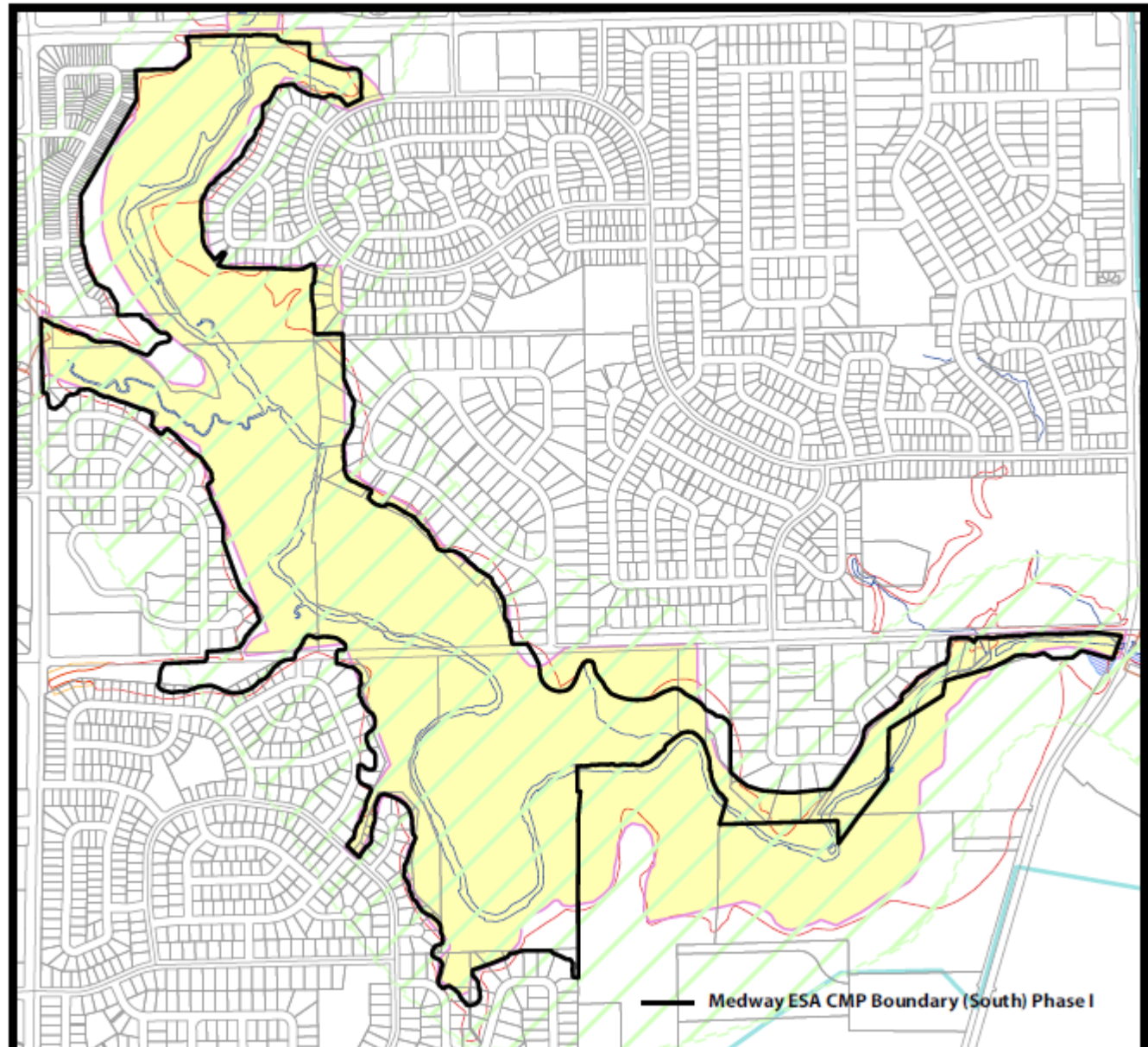
Recommended
Amendment
Map: 1989 OP
Schedule A



1989 OP: Schedule “B1” – Natural Heritage Features

Delineation
overlay on
existing
Schedule B1 of
1989 OP.

Recommended
amendment is
for ESA feature
to conform to
the CMP.



1989 OP: Schedule “B1” – Natural Heritage Features

Recommended
Amendment
Map: 1989 OP
Schedule B1

