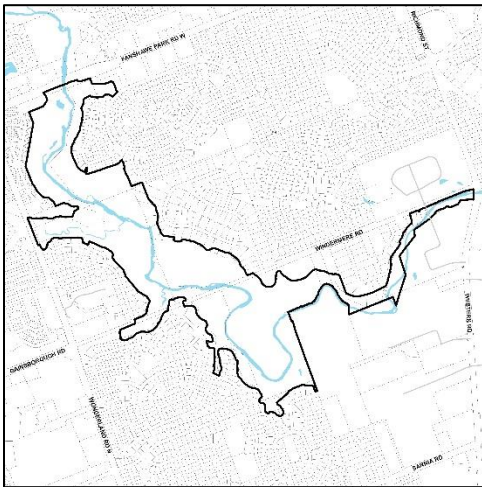




# NOTICE OF APPLICATION & PUBLIC MEETING NOTICE

## Medway Valley ESA (South) Conservation Master Plan Phase II, and Official Plan Amendment and Zoning By-law Amendment

# Medway Valley Heritage Forest Environmentally Significant Area (ESA)



**File: OZ-9367**

**Applicant: City of London**

### What is Proposed?

- Consideration by City Council for adoption of the Medway Valley Heritage Forest Environmentally Significant Area (South) Conservation Master Plan Phase II, including updates to the Eastern Boundary, Sustainable Trail Concept Plan and environmental management strategy.
- Amendments to include the Medway Conservation Master Plan as a guideline document to the London Plan; and
- Amendments to align London Plan, 1989 Official Plan, and Zoning By-law mapping with delineation of the ESA as previously approved by Council.

## YOU ARE INVITED!

Further to the Medway Conservation Master Plan Notice dated March 22, 2021, you are invited to a public meeting of the Planning and Environment Committee to be held at the time, date and location below.

**Meeting Date and Time:** Monday, July 26, 2021, no earlier than 6:00 p.m.

**Meeting Location:** City Hall, 300 Dufferin Avenue, 3rd Floor

**Please refer to the enclosed Public Participation Meeting Process insert.**

For more information contact:

E. Williamson  
[ewilliams@london.ca](mailto:ewilliams@london.ca)  
519-661-CITY (2489) ext. 7602  
City Planning, City of London,  
206 Dundas St., London ON N6A 1G7  
File: OZ-9367  
[getinvolved.london.ca/medway-valley-cmp](https://getinvolved.london.ca/medway-valley-cmp)

To speak to your Ward Councillor:

Councillor Josh Morgan (east of Medway)  
[joshmorgan@london.ca](mailto:joshmorgan@london.ca)  
519-661-CITY (2489) ext. 4007

Councillor Phil Squire (west of Medway)  
[psquire@london.ca](mailto:psquire@london.ca)  
519-661-CITY (2489) ext. 4006

**If you are a landlord, please post a copy of this notice where your tenants can see it.  
We want to make sure they have a chance to take part.**

Date of Notice: June 21, 2021

# Application Details

## Medway Valley Heritage Forest Conservation Master Plan

Council consideration of the Medway Valley Heritage Forest Environmentally Significant Area (ESA) (South) Conservation Master Plan (CMP) Phase II for the area south of Fanshawe Park Road West. The Medway CMP was prepared in consultation with Council directed stakeholder groups and First Nations communities. The CMP includes a Sustainable Trail Concept Plan, clarification of the Eastern Boundary access, an adaptive management and monitoring framework and proposed community engagement and education opportunities.

## Requested Amendment to the 1989 Official Plan

To change designations on Schedule A – Land Use FROM Low Density Residential designation TO Open Space designation; FROM Open Space designation to Low Density Residential designation; and FROM Open Space designation TO Multi-Family, Medium Density Residential designation. Also, to change ESA natural heritage feature on Schedule B1-Natural Heritage Features to align with the delineation approved by Council as part of Phase 1 of the Conservation Master Plan.

## Requested Amendment to The London Plan (New Official Plan)

To add the Medway Valley Heritage Forest Environmentally Significant Area (ESA) Conservation Master Plan as a guideline document to the London Plan. To change designations on Map 1 – Place Types to align with the Council approved ESA delineation, FROM Neighbourhoods Place Type TO Green Space Place Type, and FROM Green Space Place Type TO Neighbourhoods Place Type. Also to change ESA natural heritage feature on Map 5 – Natural Heritage to align with ESA delineation.

## Requested Zoning By-law Amendment

To change the zoning on properties to align with Environmentally Significant Area delineation approved by Council as part of Phase 1 of the Conservation Master Plan. Changes are from various Residential Zones (R1-10, R1-9, R1-8, R1-6, R5-6) to an Open Space OS5 Zone. Changes from a Regional Facility RF Zone to an Open Space OS5 Zone. Changes from a Residential R1-8 Zone to an Open Space OS4 Zone.

Changes to the currently permitted land uses and development regulations are summarized below.

The Official Plans and the Zoning By-law are available at [london.ca](http://london.ca).

### Current Zoning

**Zones:** Residential Zones R1-10, R1-9, R1-8, R1-6, R5-6, and Regional Facility Zone RF  
**Permitted Uses (Residential Zones):** R1 Zone permits a single detached dwelling. R1 Zone variations are based on size of lot and context, with R1-6 through R1-9 applied to suburban single dwelling developments. R1-10 applies to larger estate lot development. R5-6 Zone permits medium density residential development in the form of cluster townhouse dwellings and cluster stacked townhouse dwellings.

**Permitted Uses (Regional Facility Zone):** Regional Facility RF Zone provides for a range of large institutional type facility uses. The RF Zone permits the following uses: adult secondary schools; ancillary residential and/or hostel accommodation; places of worship; commercial parking structures and/or lots; commercial schools; community colleges; day care centres; elementary schools; emergency care establishments; group home Type 2; hospitals; institutional uses; libraries; nursing homes; private schools; recreational buildings; secondary schools; stadia; supervised residences; and universities.

### Requested Zoning

**Zone:** Open Space Zone variations OS4 and OS5

**Permitted Uses:** Open Space Zone variations OS4 and OS5 are applied to lands which have physical and/or environmental constraints. The OS4 Zone variation is intended to apply to hazard lands that may be subject to erosion. The OS5 Zone variation is intended to apply to natural heritage features and functions that have been recognized by Council as significant. OS4 Zone variation permits the following uses: conservation lands; conservation works; golf courses without structures; private and public parks without services; use of land for agricultural/horticultural purposes; and sports fields without structures. The OS5 Zone variation permits the following uses: conservation lands; conservation works; passive recreational uses which include hiking trails and multi-use pathways; and managed woodlots.

## **Planning Policies**

Any change to the Zoning By-law must conform to the policies of the official plan in effect. The London Plan is London's long-range planning document and the city's new Official Plan. The Green Space Place Type is in effect on London Plan Map 1 – Place Types. By order of the Local Planning Appeal Tribunal (LPAT), where policies of the London Plan conflict with a policy of the 1989 Official Plan, the London Plan policy shall prevail.

Land uses permitted within the Green Space Place Type are based upon the natural heritage features and areas contained in the subject lands. In addition to natural features, land uses may include public parks, private green space such as cemeteries and golf courses, agriculture, woodlot management, horticulture, essential public utilities and conservation management uses.

Proposed amendments to the land use designations and mapping of the 1989 Official Plan are consistent with the London Plan and Council approved delineation of the Environmentally Significant Area from Phase 1 of the Conservation Master Plan.

## **How Can You Participate in the Planning Process?**

You have received this Notice because someone has applied to change the Official Plan designation and the zoning of land located within 120 metres of a property you own, or your landlord has posted the public meeting notice in your building. The City reviews and makes decisions on such planning applications in accordance with the requirements of the Planning Act. If you previously provided written or verbal comments about this application, we have considered your comments as part of our review of the application and in the preparation of the planning report and recommendation to the Planning and Environment Committee. The additional ways you can participate in the City's planning review and decision making process are summarized below.

### **See More Information**

You can review additional information and material about this application by:

- Contacting the City's Ecologist/Planner listed on the first page of this Notice; or
- Viewing the application-specific page at [getinvolved.london.ca/medway-valley-cmp](http://getinvolved.london.ca/medway-valley-cmp)
- Opportunities to view any file materials in-person by appointment can be arranged through the file Planner.

### **Attend This Public Participation Meeting**

The Planning and Environment Committee will consider the requested Official Plan and zoning changes at this meeting, which is required by the Planning Act. You will be invited to provide your comments at this public participation meeting. A neighbourhood or community association may exist in your area. If it reflects your views on this application, you may wish to select a representative of the association to speak on your behalf at the public participation meeting. Neighbourhood Associations are listed on the [Neighbourgood](http://Neighbourgood) website. The Planning and Environment Committee will make a recommendation to Council, which will make its decision at a future Council meeting.

Alternative formats to in-person attendance are available through telephone or virtual web streaming (computer) application. Pre-registration is required to access these options and can be found in the Public Participation insert.

**Please refer to the enclosed Public Participation Meeting Process insert.**

## **What Are Your Legal Rights?**

### **Notification of Council Decision**

If you wish to be notified of the decision of the City of London on the proposed official plan amendment and zoning by-law amendment, you must make a written request to the City Clerk, 300 Dufferin Ave., P.O. Box 5035, London, ON, N6A 4L9, or at [docservices@london.ca](mailto:docservices@london.ca). You will also be notified if you speak to the Planning and Environment Committee at the public meeting about this application and leave your name and address with the Secretary of the Committee.

### **Right to Appeal to the Local Planning Appeal Tribunal**

If a person or public body would otherwise have an ability to appeal the decision of the Council of the Corporation of the City of London to the Local Planning Appeal Tribunal but the person

or public body does not make oral submissions at a public meeting or make written submissions to the City of London before the proposed official plan amendment is adopted, the person or public body is not entitled to appeal the decision.

If a person or public body does not make oral submissions at a public meeting or make written submissions to the City of London before the proposed official plan amendment is adopted, the person or public body may not be added as a party to the hearing of an appeal before the Local Planning Appeal Tribunal unless, in the opinion of the Tribunal, there are reasonable grounds to add the person or public body as a party.

If a person or public body would otherwise have an ability to appeal the decision of the Council of the Corporation of the City of London to the Local Planning Appeal Tribunal but the person or public body does not make oral submissions at a public meeting or make written submissions to the City of London before the by-law is passed, the person or public body is not entitled to appeal the decision.

If a person or public body does not make oral submissions at a public meeting or make written submissions to the City of London before the by-law is passed, the person or public body may not be added as a party to the hearing of an appeal before the Local Planning Appeal Tribunal unless, in the opinion of the Tribunal, there are reasonable grounds to do so.

For more information go to <https://olt.gov.on.ca/contact/local-planning-appeal-tribunal/>.

### **Notice of Collection of Personal Information**

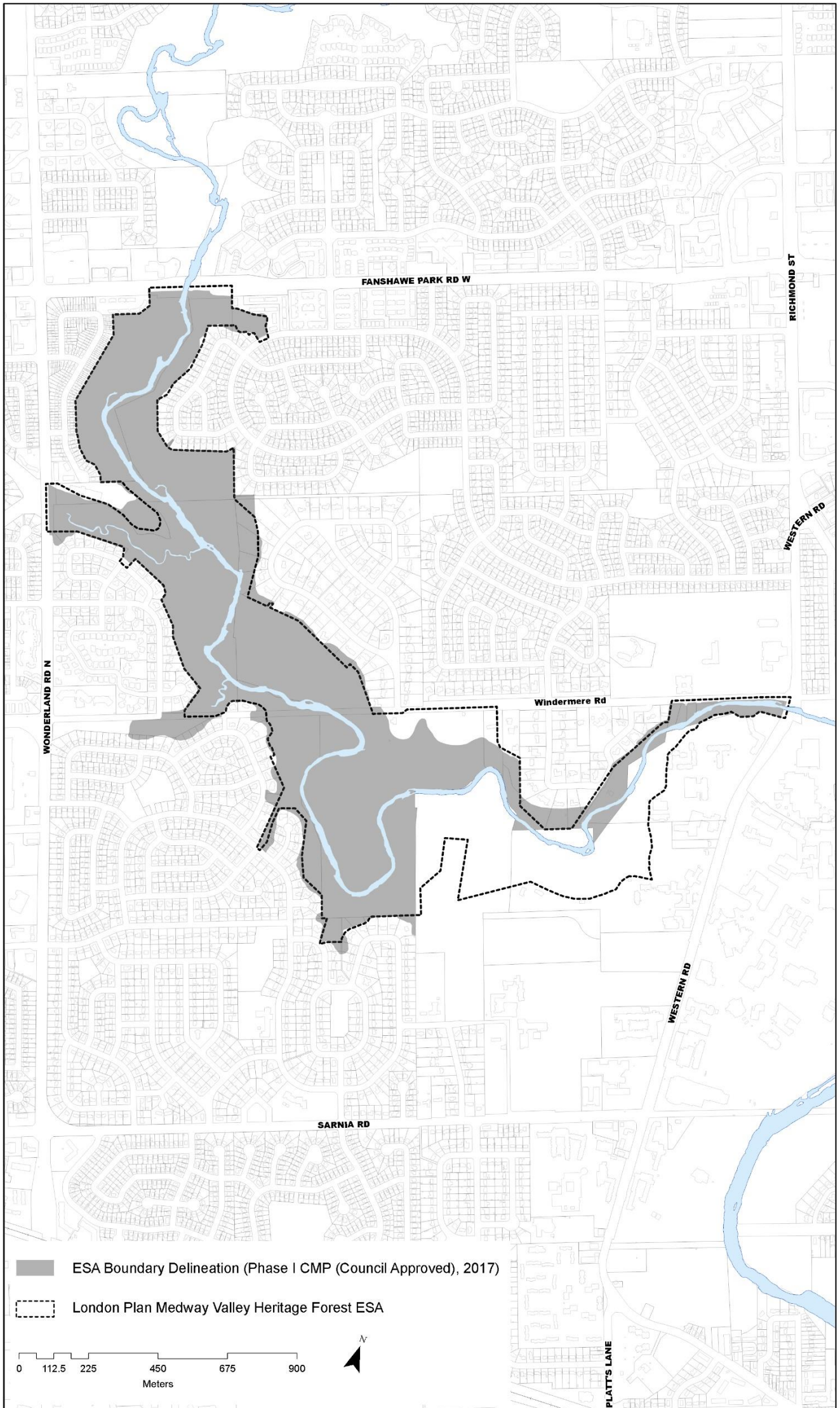
Personal information collected and recorded at the Public Participation Meeting, or through written submissions on this subject, is collected under the authority of the Municipal Act, 2001, as amended, and the Planning Act, 1990 R.S.O. 1990, c.P.13 and will be used by Members of Council and City of London staff in their consideration of this matter. The written submissions, including names and contact information and the associated reports arising from the public participation process, will be made available to the public, including publishing on the City's website. Video recordings of the Public Participation Meeting may also be posted to the City of London's website. Questions about this collection should be referred to Cathy Saunders, City Clerk, 519-661-CITY(2489) ext. 4937.

### **Accessibility**

The City of London is committed to providing accessible programs and services for supportive and accessible meetings. We can provide you with American Sign Language (ASL) interpretation, live captioning, magnifiers and/or hearing assistive (t coil) technology. Please contact us at [planning@london.ca](mailto:planning@london.ca) or 519-661-4980 by July 19, 2021 to request any of these services.



# Location Map



**Medway Valley Heritage Forest Conservation Master Plan**  
**Phase 2: Restart Meeting**  
10 a.m. to 11 a.m., Wednesday, August 21th, 2019  
Capitol Boardroom 206 Dundas Street

**Minutes of Meeting**

**Attendance**

The City	Gregg Barrett, John Fleming, Emily Williamson
UTRCA	Brent Verscheure
ACCAC	Michael Dawthorne, Jacqueline Madden
EEPAC	Susan Hall, Sandy Levin

**1) Welcome and Introductions**

**2) Project Background and Intention of the Meeting**

*a. Overview / Background*

- Phase 2 was attached to the meeting invite. Other reports and documents are available on the City's Website

<https://www.london.ca/residents/Environment/Natural-Environments/Pages/Conservation-Plans.aspx>

*b. Restart Intent*

- By bringing together ACCAC, EEPAC, UTRCA and the City together in one room we hope to establish a working group that combines the Ecological, Accessibility, Regulatory and Natural Hazard expertise needed to navigate the intricacies of the project and develop a successful plan to move this section of the MVHF ESA Phase 2 CMP forward.

**3) Shared Principles**

*a. Scientific Basis*

- Citizen science (public observations) will be included as part of the scientific basis while acknowledging that not all citizen science is created equal. The timing and quality of these observations is extremely important to avoid project delays. The group agrees that observations of this nature should be included in the background review as possibilities to be considered and assessed for during the subsequent 'Detailed Design' phases prior to construction.

*b. Environmental Protection*

- From the London Plan :  
1301\_ **The diversity and connectivity of natural features and areas, and the long-term ecological function and biodiversity of Natural Heritage Systems, will be maintained, restored or, where possible, improved, recognizing linkages between and among natural heritage features and areas,** surface water features and groundwater features. It is important to note that ecosystem processes are happening everywhere, not just in a defined Natural Heritage System, and that recognition of ecosystem based planning needs to account for all these processes across the City of London. Not all natural heritage features and areas are physically connected to each other. This is because there is a scattered pattern of remnant natural heritage features and areas across the landscape that has been modified over time by human activities.
- The group notes that Environmental Protection establishes if access is appropriate for all members of the public. If access is determined to be appropriate, then ensure

that as many people as possible can access the area. This is achieved through consultation with ACCAC. If not, how are we limiting, prohibiting and excluding access to these areas. See the attached graphic outlining the process.

*c. Increased Accessibility*

- Discussions of trail type specifics including, trail material type, and the type of disability accommodation that the CMP aims to address will be considered at later stages of the process.
- Level 2 Trails do not necessarily require paving or asphalt – firm, hard, stable surface.

**O.Reg. 191/11: Integrated Accessibility**

80.9 (1) Obligated organizations shall ensure that any recreational trails that they construct or redevelop, and that they intend to maintain, meet the following technical requirements:

1. A recreational trail must have a minimum clear width of 1,000 mm.
2. A recreational trail must have a clear height that provides a minimum head room clearance of 2,100 mm above the trail.
3. The surface of a recreational trail must be **firm and stable**.
4. Where a recreational trail has openings in its surface,
  - i. the openings must not allow passage of an object that has a diameter of more than 20 mm, and,
  - ii. any elongated openings must be orientated approximately perpendicular to the direction of travel.

*d. Other?*

- Natural Hazards, should be considered as a shared principle throughout this update. UTRCA notes that floodplain mapping is not yet available.

**4) Resources that will be used**

*a. CMP Natural Heritage Inventory and Evaluation 2013*

- The group agrees that this Natural Heritage Inventory and Evaluation are the necessary starting point and were conducted with sound scientific principles. Any outstanding areas or necessary assessments can be completed as a compliment to this on an as-needed basis, recognizing that species presence/ absence and associated population dynamics can fluctuate seasonally and annually. These assessments also expire and are best completed within a close proximity to construction.

*b. Citizen Science / Sightings*

*c. AODA Standards: A Guide to the Integrated Accessibility Standards Regulation – April 2014.*

*d. Adopted City Standards – was raised during the meeting, clarification required.*

*e. Guidelines for Management Zones & Trails in Environmentally Significant Areas*

**5) Review of Base Mapping**

*a. Identify Areas of Agreement*

*i. Where are they?*

*ii. If they are not a concern can we agree on these sections?*

- The group established that all areas that were not identified areas of common concern were areas of agreement. This section was skipped to focus on the areas of common concern.

*b. Identify Areas of Concern / Issues*

*i. Where are they?*

1. EEPAC - Restricting Access surrounding the False Rue-anemone.

2. Bridge A
  3. Bridge D
  4. Level 2 Trails within the ESA: If public access is granted inside the ESA then Level 1 and 2 Trail Types both need to be included in the plan.
  5. Cyclist Connectivity:
- ii. *What is the concern/ issue?*
1. False Rue-anemone Access:
    - Additional access from Bridge A and D will bring more people to the area.
    - Trail Closures have not been successful in the past.
  2. Candidate Hibernacula at Bridge A
    - Until a snake coverboard survey is completed, the rockpile should be considered a potential hibernacula.
  3. Slender Satin Grass and Cream Violet at Bridge D
    - Concerned that mitigation measures will not be enough to ensure that the species is protected.
  4. Accessibility is needed in the area in the form of Level 2 Trail Types
    - If access to the area has been granted to the public, additional areas of connectivity (e.g., potential for loops ) are necessary to ensure that the accessibility requirements are met.
  5. Accommodation from Fanshawe/Wonderland to Western is needed to include cyclists.
    - How can we facilitate a connection, better signage to improve connectivity between these areas?
- iii. *Are there other options that accomplish the same goals?*
1. False Rue-anemone:
    - Other opportunities to direct/divert people away from sensitive species ?
    - Would require a site visit to Elsie Perrin Williams.
  2. Bridge A Candidate Hibernacula:
    - Other crossings away from sensitive species that accomplish connectivity goals?
    - Would require a site visit to determine if the area is a candidate snake hibernacula, and flag the area for a snake coverboard survey during detailed design.
  3. Bridge D Slender Satin Grass and Cream Violet:
    - Other crossings away from sensitive species that accomplish connectivity goals?
    - Would require a site visit to determine population clusters and if opportunities for the alignment to avoid them exist or not.
  4. If Access is permitted, Accessibility is required for the updated plan: What Level 2 trails could be created in the ESA that avoid sensitive species and also provide access?
    - A13 – A11 loop
    - Southside A18 – A19
    - A crossing is key to getting beyond the periphery of the ESA.
  5. Cyclist Accommodation:



- New signage to include 'How to get to Western University'. Directional signs were discussed as a solution as both topography and ecological features and functions mean a direct link to the University (Trail Type – Level 3) risks damage to ecological features and functions.
- None of the trail types proposed in 2015 or currently in place are Trail Type - Level 3(Cycling) except for the proposed trail behind Attawandaron. There are concerns that Type II trail use is not limited to 'kids on bikes'. How can we limit unsanctioned access of these areas?

*iv. What hasn't been considered previously?*

1. How can we improve trail closing techniques?
  - Hockett, Marion and Leng (2017) paper on trail mitigation strategies.
2. Other crossings that avoid sensitive species. Coordination with UTRCA to establish areas with the least natural hazard concerns and include floodplain mapping considerations.

**6) On-Site Meetings**

- a. *Do we need to consider anything before these meetings are booked?*
  - i. Meetings suggested for Elsie Perrin and Longbow / Doncaster – date to be determined. Please provide indication of availability.

**7) Other Comments**

Mark-ups to the mapping, identifying the areas of common concern have been included as an attachment.

**8) Next Meeting – September?**

Please provide indication of availability.

**Medway Valley Heritage Forest Conservation Master Plan**  
**Phase 2: On-site Meeting**  
**9 am to 11 am, Thursday, November 14<sup>rd</sup>, 2019**  
**Elsie Perrin Williams Estate**

**Minutes: Sean Hudson**

**Attendance**

The City	Gregg Barrett, Mike Fabro, Sean Hudson
ACCAC	Jacqueline Madden
EEPAC	Susan Hall, Sandy Levin

**Regrets**

ACCAC	Michael Dawthorne
UTRCA	Brent Verscheure

- We identified two trail sections that have accessibility issues, including: the 'mud hole' and the steep slope near the EPW entrance (see Map).
- We also identified that encroachment is occurring immediately along the river bank. Specifically, near the river lookout with the large rocks (see Map).
- CITY and EEPAC rep. identified that an additional two large rocks could be placed at this lookout to deter encroachment onto the river bank.
- CITY rep. identified the 'mud hole' as an accessibility issue. How to make this surface 'firm and stable' has not yet been determined. Regardless of the substrate used, some sort of drainage will be needed at this section.
- EEPAC rep. identified that the addition of a trail section between two flatter parts of the entrance-exit trails would allow us to bypass the steep slope. The trail section on the steep slope would be closed and restored.
  - The yellow trail sign would need to be removed.
  - A spring inventory, restoration measures, and measures to reduce encroachment would need to be conducted in the proposed area. Several trees and / or Red Osier Dogwood could be planted on the slope to block the view of the trail section below, and limit encroachment.

**Species sighted:**

- *Odocoileus virginianus*
- *Colaptes auratus*
- *Poecile atricapillus*
- *Liriodendron tulipifera*

**Next steps:**




- What is an acceptable 'firm and stable' plan for these areas? How will it be implemented? We should meet once more prior to Spring to discuss next steps.
- Discuss options for river crossings, including costs and benefits of crossings.
- Once accessibility is confirmed, we can bring the CMP back to the public.

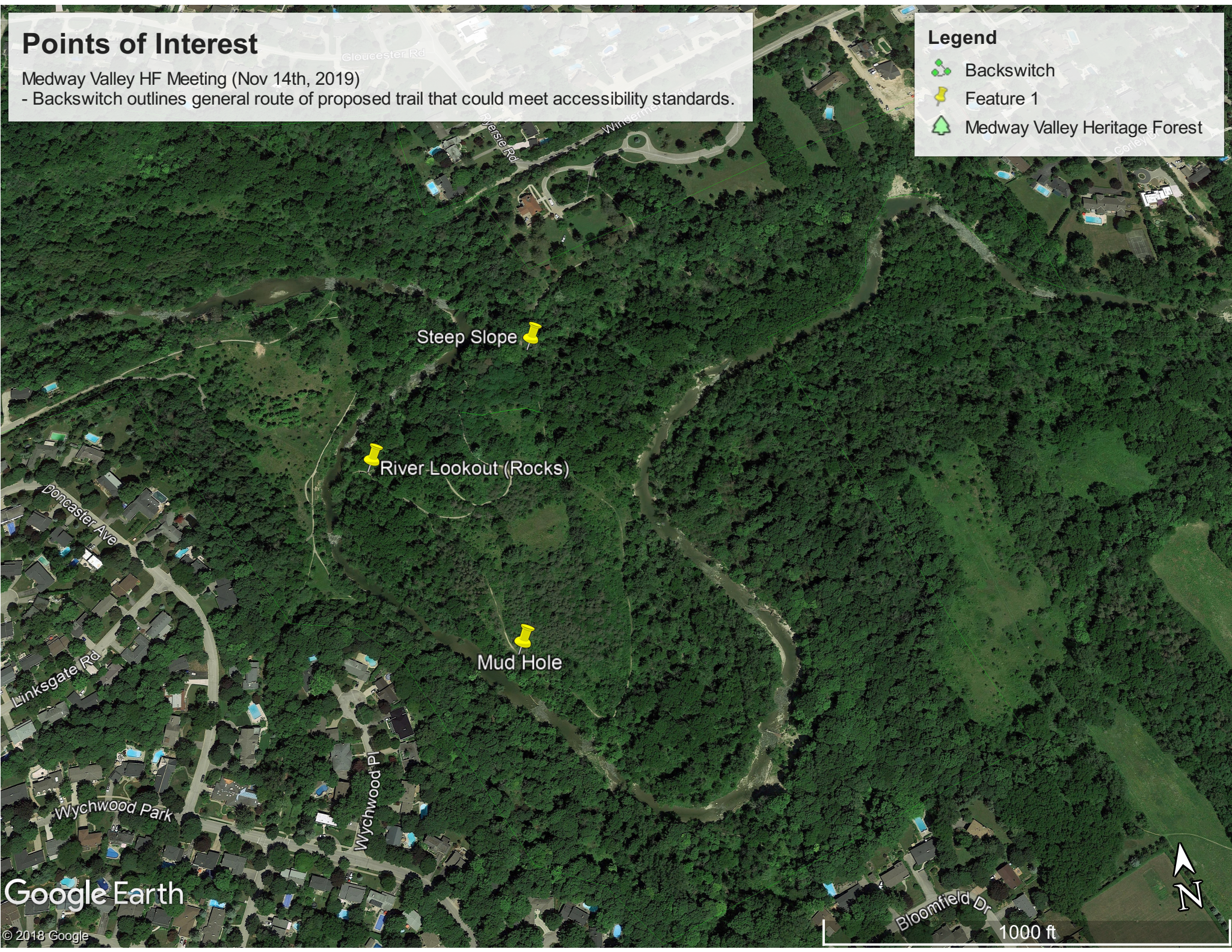


# Points of Interest

Medway Valley HF Meeting (Nov 14th, 2019)  
- Backswitch outlines general route of proposed trail that could meet accessibility standards.

## Legend

-  Backswitch
-  Feature 1
-  Medway Valley Heritage Forest





**Medway Valley Heritage Forest Conservation Master Plan**  
**Phase 2: Snake Creek / Attawandaron**  
**Outline for Requested Comments**  
**Comments to be received prior to November 2, 2020 and November 16, 2020.**

**Affiliations**

City Planning	Gregg Barrett, Mike Fabro, Emily Williamson
City Accessibility	Melanie Stone (as needed)
ACCAC	Michael Dawthorne, Jacqueline Madden
EEPAC	Susan Hall, Sandy Levin
UTRCA	Brent Verscheure

**General:**

Sandy Levin – has added photos to maps should you find them useful. <https://www.dropbox.com/s/ir4e8z4ayr2y7my/TAG%20walk%20Snake%20Creek%20and%20Attawandaron.pdf?dl=0>

**Attawandaron Access A5 – A1** (See Attawandaron Mapping):

Comment	Additional Comments Noting Points of Agreement – City Response
<p><b>Slope, Trail Suitability – Siting Considerations:</b>  Susan Hall  1) This proposed trail can be entered from the parking lot for the Museum of Ontario Archeology at Attawandaron Park. It continues in the park on a grassy and occasionally wet, level surface past A2 where at A3, the level green space ends. The trail narrows and is sloped down towards the valley. It ends at a steep asphalt path that links A4 and A5.</p> <p>Sandy Levin  2) flat (Attawandaron Park) Although it is unclear how it gets from the north section without dealing with a narrow area that is not flat (see Photo 1).</p>	<p>1) Flat ground mostly mowed. Seems like an excellent location for an accessible trail, or even a multiuse trail.  2) Potential site specifics can be addressed section by section as the plan is implemented.</p>
<p><b>Slope, Trail Suitability – Hazard Considerations</b>  Sandy Levin  3) none apparent for 1 to 5 however the area from A5 directly south is often wet (even as late as May has standing water) and sometimes flooded (see recent Photo 2). There is also a wetland just south of the bike gate. It would take significant work to provide drainage for a Level 2 trail to the Creek which would change the hydrology, and it would still flood at times. Also no green ESA sign to this section.</p> <p>Brent Verscheure  4) Proposed Level 3 trail connection between A1-A4 (including A2, A3) would be considered new development within hazard lands (riverine erosion hazard associated to Medway Creek). Please note that any new development (including Level 1-3 trails) shall avoid riverine erosion hazard lands. Any proposed development of these lands will be subject to a favourable geotechnical assessment that will identify the development limit, ie: stable top of slope plus 6m erosion access allowance as outlined within the MNR Technical Guidelines. It should be noted that the specific area between A3-A4 appears to be highly constrained following a review of topographical mapping.</p> <p>5) Existing managed trail/ Proposed Level 2 trail – located within the riverine flooding hazard lands of Medway Creek, the formalization of this managed trail into a Level 2 managed trail shall have regard for Medway Creek and the associated floodplain lands. Proposed and formalized trails should locate and avoid riverine flooding hazard lands where possible, and shall not have any negative impacts on the conveyance of flows during a 2yr thru 250yr return period, as well as erosion of the top of bank of the Medway Creek.</p>	<p>3) Proper trail planning will entail addressing the water as it is unclear if this is a wetland feature, however the hydrology noted may be the result of overland flow. Can be assessed at later stages as appropriate.  4) Noted.  5) Noted.  6) Noted.  7) Noted.</p>



<p>6) Overview mapping is conceptual and does not show topography and proposed grading associated to formalizing managed trails. Additional detail will be required when preferred trail network is being further reviewed and considered.</p> <p>7) Medway Creek linkage comments to be incorporated at later date as per request on comments.</p>	
<p><b>Opportunities to provide accessible trails:</b>          Could accessible trails be sited in this section? If so, where? What is an acceptable 'firm and stable' plan for these areas? How could it be implemented?          Susan Hall</p> <p>8) For much of its' length this trail falls within a "natural environment" designation with a small part of it to the north of A3 as "nature reserve". Level 2 trails are suggested for a "natural environment. A Level 2 trail as described in Guidelines for Management Zones &amp; Trails in Environmentally Significant Areas (p.34) would be sufficient to meet AODA standards. The proposed Level 3 trail would allow adult cyclists and also increase linkages. I support a level 3 trail.</p> <p>9) Of concern is the availability of accessible parking. Around A4, A3 and up to A2, off-street parking is limited by semi-detached housing with double driveways running to the street and rounded curbs. To improve accessibility it might be useful to designate handicapped parking south of A2. There is no accessible parking at A5.</p> <p>Sandy Levin</p> <p>10) In the section adjacent to the houses, yes, as it would also deal with long standing encroachment issues by abutting property owners. There are already sidewalks on both sides of Attawandaron that lead to a sidewalk, not the parking lot.</p> <p>11) Not sure what this means so I leave it to Michael and Jackie.</p> <p>Jackie Morton</p> <p>12) Access points 1-5 are the easy parts of this trail plan from an accessibility point of view. It is easy to make these accessible and would be a benefit to the entire community to finish this part of the trail system.</p>	<p>8) Providing areas along the periphery for cyclists diversifies the uses and increases recreation opportunities.</p> <p>9) Noted.</p> <p>10) Formalizing the trail may include native plantings along the property line to provide privacy to landowners and reduce encroachment.</p> <p>11) Noted.</p> <p>12) Including level 3 or level 2 trails through this section have less potential for impact given their location in natural environment management zone.</p>
<p><b>Linkages:</b>          What implications are associated with creating these community linkages with Medway VHF North?</p> <p>Michael Dawthorne</p> <p>13) In the last round of discussions on Medway I believe most agreed the crossing to the North (near A3) offered very little benefit other than to connect the northern segment (North of Fanshawe) to the East and closer to the University. It was likely to funnel more people and bikes into the valley.</p> <p>14) It's added accessibility value is offset by the risk, and the fact that portion of the trail offers very little 'natural exposure' in that there are clear signs of housing or major roads in three of four directions (N,E, and W). The previous plan also called for a paved pathway connecting A1 and A4 that would run behind the houses and serve as a degree of separation between the residential properties and the valley itself, while simultaneously allowing people (including those with disabilities) to not have to leave the pathway system, enter residential areas, then return in a few blocks later.</p> <p>Susan Hall</p> <p>15) Linkages to Level 3 trails north of Fanshawe Rd. W and on - road bicycle paths on Wonderland and Sarnia Roads to Western University at A1.</p> <p>Sandy Levin</p>	<p>13) A finalized CMP and associated trail upgrades will assist in providing visitors with a clear and preferred trail option, reducing associated informal trails and allowing for more successful trail closures.</p> <p>14) Can you elaborate on the 'risk' mentioned here? A formalized pathway would provide a separation between the natural area and residential area.</p> <p>15) Noted.</p> <p>16) Something to consider and weigh against the value of providing access to those with disabilities. The third informal trail that you mention identifies the public's desire to access the area. Do you wish to have it included as an informal trail on the mapping?</p>

<p>16) Brings more bikes to an area with two informal trails on Museum property already. BTW, there is a third informal trail behind the Museum not shown on the map (see Photo 3). It is thru the area where the Museum waste bin is and where the sign points to the west for trail continuity.</p>	
<p><b>Sensitive Species habitat Where does it exist? How can we best protect it?</b></p> <p>Sandy Levin</p> <p>17) In the area now called Attawandaron Park, it is mowed lawn –it is assigned the Natural Env zone. Inventory by Dillon shows a Butternut tree near the north end of the site although I am not aware if its health was assessed or not.</p> <p>18) In the area that Leads to Medway Creek, there is a Blue-leaved Willow (CC 10) on the north side of the Creek as noted in the inventory by Dillon.</p> <p>19) Dillon also identified Green Dragon near the informal trail to the northeast of the Museum</p> <p>20) Butternut in Attawandaron Park – give it the required 25 m buffer. Blue Leaf Willow, don't build a bridge as the bridge would destroy it and the hibernacula on the south side of the Creek. For the Green Dragon, close the informal trail.</p>	<p>17) Agree - no butternut assessment completed to assess for hybrid status of butternut tree which could influence routing. Recommend analysis to appropriately inform process.</p> <p>18) Blue-leaved willow is not listed on the existing mapping, or in the report. Please review Table 10 in the CMP. New inventory is not being accepted as part of this process.</p> <p>19) This was not included in the mapping</p> <p>20) Potential hibernacula falls below the highwater line and therefore is not a viable site. 'are protected from flooding (e.g. above high water mark)'.  <a href="#">Environment and Climate Change Canada. 2016. Recovery Strategy for the Queensnake (Regina septemvittata) in Canada. Species at Risk Act Recovery Strategy Series. Environment and Climate Change Canada, Ottawa. 3 parts, 28 pp. + vi + 34 pp. + 5 pp.</a></p>
<p><b>Other</b></p> <p>Sandy Levin</p> <p>21) There is an opportunity to deal with the buckthorn infestation at the north end of Attawandaron Park.</p> <p>22) Reminder only 18% of respondents to a survey during the development of the CMP said improved trail linkages was a priority.</p> <p>23) The informal trail shown on the east side of the Creek from Fanshawe Park Road south no longer exists. This has been confirmed by the ESA team.</p> <p>24) As development increases to the north including the bridge over Richmond Street, there will be increases in utilization both appropriate and inappropriate.</p> <p>25) Any change should be concurrent with scarifying informal trails and enforcement activities with the closures.</p> <p>26) The CMP map does not show that there are two informal trails up to the Museum property. (See drawing on map)</p>	<p>21) Agree. Invasive removal is out of the scope of this discussion, as we assume the group has no disagreement that invasive species should be removed as part of ESA management works. Unpacking the invasive management strategy was not part of the Council directed review of this CMP.</p> <p>22) As anyone could fill out the survey multiple times, the data was not intended to be quantitative.</p> <p>LAC 3 Minutes in CMP:  1.3.2. Karla provided more clarity to the LAC on the engagement/survey process and that, with multiple platforms being used, comments have to be carefully considered as the comments are not weighted. The process was not intended to be one of statistical sampling/data collection for decision-making. Comments received during the engagement process from the public and the LAC to date were used to identify items for consideration in the Draft CMP and review with the Guidelines for Management Zones and Trails in ESAs rather than being tabulated to make decisions."</p> <p>LAC 5 Minutes in CMP:  5.2. Sandy Levin was puzzled as to why anybody could fill out the survey (i.e., the survey is open to anyone who has access to the internet).  5.2.1. Karla touched on that it is a consultation tool and not to be used for statistical purposes.</p> <p>23) Noted.</p> <p>24) Agreed. Formalizing the CMP and establishing appropriate access for visitors will provide a better option to improve the likelihood that uses will be appropriate.</p> <p>25) Agreed. Formalizing the CMP and establishing appropriate access for visitors will provide a better option to improve the likelihood that uses will be appropriate.</p> <p>26) Agreed. Informal trail closures</p>

**Snake Creek Access A1 – A20 (See Snake Creek Mapping):**

Topic	Comment	City Response
Slope, trail suitability	<p>Siting Considerations: Susan Hall</p> <p>27) A1 starts as a level 3 paved path. The trail entrance off this path is steep and eroded . The trail levels out as it continues towards the “stepping stones”. It is located at the base of a steep hillside and for part of its’ length hugs the creek. In places the trail has widened with exposed tree roots. At one point where erosion has worn away the bank and a tree is growing beside the trail the actual trail narrows to a width of not more than 2 feet if that. To proceed it is necessary to go around by climbing over the roots of the tree or dropping down the river bank and up again.</p> <p>28) The Trail starting at A1 lies for the most part within the flooding hazard and erosion hazard lines identified for Snake Creek (UTRCA, 2019).</p> <p>29) At A20 the trail starts with a narrow, steep, slippery incline before turning right and gently sloping down to Snake Creek at the stepping stones. It lies for the most part within the flooding hazard and erosion hazard lines identified for Snake Creek (UTRCA, 2019).</p> <p>Sandy Levin</p> <p>30) significant slope down from sidewalk on Wonderland Road. A hump shortly after starting the trail from Wonderland Road. An area that is usual wet and then a very narrow path around beech tree next to Creek which is up against a steep slope (see following Photos 4-7).</p> <p>31) Significant slopes from A20. See Photo 8 from bottom of Pitcarnie entrance looking up.</p> <p>Hazard Considerations: Brent Versheure</p> <p>32) Existing trails shall be evaluated to ensure that the trails are not exacerbating erosion and erosion process at the top of bank of the watercourses. Informal trails within riverine erosion hazard and riverine flooding hazard shall be reviewed and strategically closed/eliminated, where feasible. Site specific locations of unmanaged /informal trails should be evaluated to ensure these locations will not exacerbate erosion and erosion processes.</p> <p>33) Proposed area of Snake Creek linkage should be evaluated to consider the natural meander of Snake Creek where it is visible that active erosion is ongoing.</p> <p>34) Overview mapping is conceptual and does not show topography and proposed grading associated to formalizing managed trails. Additional detail will be required when preferred trail network is being further reviewed and considered.</p> <p>35) Snake Creek flows into the Medway near the trail and the trail floods every spring making it impassable.</p>	<p>27) Agree. Steep slopes at the A1 access could be improved. Due to erosion at the beech tree there is a unique opportunity to improve the trail system by realigning the trail onto more stable ground, formalizing a creek crossing earlier with steeping stones. There is cribwall potential here depending on concerns regarding sensitivity. As the trail continues to erode, eventually this section will need to be closed in the absence of remediation.</p> <p>28) Agreed. UTRCA to comment on appropriate trail structures and shoreline alteration permits would be required for works.</p> <p>29) Agreed. Potential to improve the access at Pitcarnie exists.</p> <p>30) Agreed. Steep slopes at the A1 access could be improved. Due to erosion at the beech tree there is a unique opportunity to improve the trail system by realigning the trail onto more stable ground, formalizing a creek crossing earlier with steeping stones. There is cribwall potential here depending on concerns regarding sensitivity. As the trail continues to erode, eventually this section will need to be closed in the absence of remediation.</p> <p>31) Agreed. Potential to improve the access at Pitcarnie exists.</p> <p>32) Agreed. UTRCA to comment on appropriate trail structures and shoreline alteration permits would be required for works.</p> <p>33) Agreed.</p> <p>34) What specific detail would be necessary? I assume details would be needed on a section by section basis and not as part of this process.</p> <p>35) Noted.</p>
Opportunities to provide accessible trails	<p>Could accessible trails be sited in this section? If so, where? What is an acceptable ‘firm and stable’ plan for these areas? How could it be implemented?</p> <p>Sandy Levin</p> <p>36) The management zone is Nature Reserve</p> <p>37) Not sure how one could be implemented given the topography. Plus it would require a Creek crossing into an area where there currently is no trail. And then would lead to either the unmanaged trail or if the section to Gainsborough (near A19) was reopened, to a steep slope which is in Nature Reserve. (see topo map with 1 m contours (Photo 9).</p>	<p>36) Agree. The management Zone is Nature Reserve.</p> <p>37) Realignment could allow for level two ‘firm and stable’ however the area floods annually so less potential than other sections.</p>
Linkages	What implications are there with improving these community linkages?	38) Noted.

	<p>Susan Hall 38) Proposed link to trail from A 20 by the use of “stepping stones” At A1 this trail is also linked to an asphalt path that connects up the hill to Attarwandaron Road.</p> <p>Sandy Levin 39) Not sure what communities you are linking. You mean trail linkages? By realigning the trail behind the houses on Whiteacres, you will resolve an encroachment issue which would require input from residents. However, you would also increase the usage of informal trails that would need to be scarified and closed (with enforcement right after closure). Sadly these trails were recommended for closure back in 1996 but are still in use today as there is no clear directional signage or trail closure signs. (Even the closure barricades at Gainsborough (between the end of Gainsborough Road and A19) are confusing as you have one with a closed trail sign and another without, resulting in people going down the unsigned one (see Photo 10).</p> <p>40) With the increase in population, you increase the usage both appropriate and inappropriate. Likely end up with more gatherings at the top of the bluff behind Balnagowan.</p>	<p>39) Agree. Formalizing the CMP and establishing appropriate access for visitors will provide a better option to improve the success of trail closures.</p> <p>40) Formalizing the CMP and establishing appropriate access for visitors will provide a better option to improve the success of trail closures, understanding that there will always be visitors who choose inappropriate usages. The UTRCA team does a great job of enforcement throughout the ESAs through the management contract.</p>
<p>Sensitive Species habitat</p>	<p>Where does it exist? How can we best protect it?</p> <p>Susan Hall 41) False Rue Anemone patch to the left of and at the stepping stone crossing</p> <p>Sandy Levin 42) American Growell and False Rue are noted by Dillon by the unmanaged trail along Medway Creek below the closed trail to and from Gainsborough 43) Close informal trails. Keep the closed trail closed.</p>	<p>41) Noted. Appropriate siting of trails considering these populations is needed. Potential for further mapping to identify specific locations as the areas are quite large.</p> <p>42) Agree. Location is adjacent to the river. Appropriate siting of trails considering these populations is needed. Potential for further mapping to identify specific locations as the areas are quite large.</p> <p>43) Agree. Formalizing the CMP and establishing appropriate access for visitors will provide a better option to improve the success of trail closures.</p>
<p>Other</p>	<p>Sandy Levin 44) Should be indication at the entrance to the Snake Creek section that it is a circular path, informal trails should be scarified and the closure enforced once implemented.</p> <p>45) invasive species (Woodland Sedge (<i>Carex sylvatica</i>) – As noted by Dillon, this sedge species carpets the Snake Creek Valley and is starting to spread into the Medway Creek Valley. This species overtakes native flora, creating a monoculture in the ground layer of forest communities. I don’t believe anything has been done since the inventory was completed. However, it appears it is now too extensive to control.</p> <p>46) From the 1996 Plan – trails to be closed around hill from Snake Creek Valley” (still in use and was not marked as closed as late as this summer – see Photo 11).</p> <p>47) No green ESA sign at A20</p> <p>48) It leads up the slope along a “goat path” thru Museum property to a place at the edge where the fence does not bar people from accessing. It exits/enters into their parking lot (see photo). In addition, there are many trails in the Snake Creek Valley which must be closed.</p>	<p>44) Agree. Formalizing the CMP and establishing appropriate access for visitors will provide a better option to improve the success of trail closures.</p> <p>45) Please identify source. Invasive removal is out of the scope of this discussion, we are looking at trail siting and how to best arrive at an agreeable plan.</p> <p>46) Agree. Formalizing the CMP and establishing appropriate access for visitors will provide a better option to improve the success of trail closures.</p> <p>47) Agree. Signage is out of the scope of this discussion, we are looking at trail siting and how to best arrive at an agreeable plan.</p> <p>48) Agree. Shows that access into the valley is desired. Let’s provide a better option so that folks can access without using informal trails.</p>



**Medway Valley Heritage Forest Conservation Master Plan  
Phase 2: Snake Creek / Attawandaron  
Virtual Meeting January 28, 2021  
Meeting Minutes**

**Affiliations**

City Planning	Mike Fabro, Emily Williamson
ACCAC (former)	Michael Dawthorne, Jacqueline Madden
EEPAC	Sandy Levin
UTRCA	Brent Verscheure

**General:**

- EEPAC suggested that an additional public participation round be provided given the interest in the previous interest in the CMP. The City reminded that the function of this update is to address and resolve the Council Resolution (2018). Given the extensive previous public participation process an additional round would be unlikely to result in new input from residents.
- EEPAC understands that the SWH Criteria for snake hibernacula does not mention flood plains. The City reminded that of the scope of the meeting did not include this crossing. The Environment Canada source that identifies that hibernacula in floodplains are unlikely given the flooding risk to the snakes. EEPAC disagrees with this source as it is included in the Queensnake recovery strategy.
- Post Meeting Follow-up: EEPAC reached out to two ecologists who noted that, in general, they wouldn't exclude a site from SWH hibernacula consideration below the flood plain. EEPAC provided a research paper on specific instances of garter snakes hibernating in burrows that flood. The City notes that this falls outside the scope of this update as detailed design works in this area would require additional study, but that the information will be noted as background for a necessary subsequent study.
- Resolving the CMP is necessary to improve accessibility and environmental protection as closing trails won't be effective in the absence of appropriate alternatives. 'People want to know where to go'.

**Attawandaron Access A5 – A1:**

- Discussed that more direction is required to limit off trail access and filter people toward Wonderland. Potential opportunities to include road painting but these details would be determined once the CMP is finalized.

**EEPAC and ACACC agree that increased accessibility through this section makes sense in the form of a level 3 or level 2 trail.**

UTRCA noted that they are not able to agree or sign off on any trails within the floodplain or hazard lands, even at this conceptual level, until the construction and geotechnical specifics have been outlined. The City will follow-up with UTRCA separately.

### **Snake Creek Access A1 – A20:**

- Potential to realign the trail in this section.
- Erosion feature along the northern edge could be resolved with living crib wall application, was suggested.
- Trail re-alignment could help direct people away from the informal trails.
- Realignment of the closed trail up the slope to the south (distinguished from the informal trail up the slope to the Museum).
- EEPAC notes that the 'Lawson Park' section of the ESA is not City owned.
- ACACC reminded that slope reduction increases accessibility as the trail will be more easily navigated and that 'accessibility' is not limited to level 2 trails but through well thought-out trail works. They reminded the group that many of the trail specifics that improve the accessibility of the area (naturalized seating, surfaces etc.) are determined at the detailed stage and that many of their comments at this stage are the same throughout the valley.

**EEPAC and ACACC agree that increased accessibility through trail realignment and formalizing the existing level 1 trail in this section makes sense.**

UTRCA noted that they are not able to 'agree' or sign off on any trails within the floodplain or hazard lands, even at this conceptual level, until the construction and geotechnical specifics have been outlined.

### **Next Steps:**

Review the Aldersbrook, Gloucester and Elsie Perrin sections north of Medway Creek for February 9<sup>th</sup> meeting.

**Medway Valley Heritage Forest Conservation Master Plan  
Phase 2: North of Medway Creek  
(Glenridge, Gloucester, Elsie Perrin)  
Virtual Meeting February 2, 2021  
Meeting Minutes**

**Affiliations**

City Planning	Mike Fabro, Emily Williamson
ACCAC (former)	Jacqueline Madden
EEPAC	Sandy Levin, Susan Hall
UTRCA	Brent Verscheure

**General:**

Review of the previous meeting trail plan agreement between EEAPC and ACACC:

- Attawandaron: Increased accessibility through this section makes sense in the form of a Level 3 or Level 2 trail.
- Snake Creek: Increased accessibility through trail realignment and formalizing the existing Level 1 trail in this section.

Update from UTRCA/ City meeting:

In general, UTRCA Environmental Regulations staff support and agree with the principles that provide the framework for the (conceptual) CMP which includes the future formalization of existing trails, closure of informal trails, and overall strategic improvement to accessibility and connectivity, restoration and management, while ultimately having regard for hazard lands. It is acknowledged and understood that during future detailed design and implementation phases of the various components of the Medway Valley CMP, further consultation will be required with the UTRCA that will confirm the site/location specific technical assessments (i.e. geotechnical investigations, SWM and drainage considerations, grading, ESC plans etc.) required to support the proposed trail design, specific siting/location, and development.

**Elsie Perrin Revisited A13 and A14:**

- The November 2019 site visit identified opportunity to formalize the informal trail by the Tulip Tree.
- Closing the Level 1 trail leading off the Level 2 toward E could be explored.
- UTRCA notes the Level 2 area is located within the floodplain.

**EEPAC and ACACC agree that increased accessibility through this section makes sense in the form of a Level 1 or Level 2 trail as delineated during the November 2019 site visit.**

**Gloucester Access A11 and A13:**

- Realign the trail to consist of Level 2 loop through the plantation. The specific alignment will need to be established with a site visit, but generally, the trail should remain within the Natural Environment management zone and the plantation.
- Closing the Level 1 trail would reduce the desire to head north along the informal trail toward Glenridge and associated SAR community.

- Pending the success of the closure, re-opening this section could be explored once the northbound traffic has been reduced and the area has re-naturalized. This would be considered as part of the adaptive management plan for the False Rue community.
- Revising the trail headed to A13 as a Level 2 doesn't make sense given how steep this section is.
- There are some concerns regarding the A11 access as this right of way is directly adjacent to a residence and driveway. Access improvements would be needed to clearly define the area and make it more welcoming to users.

**EEPAC and ACACC agree that increased accessibility through this section makes sense in the form of a Level 2 and Level 1 trails in conjunction with a trail closure to limit traffic moving from the Gloucester area north to the Glenridge area.**

**Glenridge Access A10 and A12:**

- Providing users with a sustainable trail will limit traffic in the proximity of the False Rue Anemone during the sensitive phenological stages.
- Topography, maintaining access along the utility overlay, and the lack of better trail options currently divert users from A10 toward crossing B.
- The group agrees that including a Level 2 trail to access A12, despite that the access is classified as Nature Reserve, is the preferred alternative as it will guide users away from crossing B and the SAR habitat.
- Formalizing creekside resting area lookouts (naturalized) at crossing A and looking over to the museum will provide destinations for users to go, diverting traffic away from sensitive habitat.
- It is acknowledged that during detailed design, any proposed works in the proximity of crossing A will require appropriate snake and hibernacula surveys to assess the presence or absence of Significant Wildlife Habitat at the candidate hibernacula site.
- Gating off the Level 1 trail loop around the SAR community will provide an adaptive management solution that can be adjusted. The trail will be closed when the species is at its most sensitive stage and open outside of that timeframe, aligning with provincial guidance. Once flowering and leaf senescence is complete, the species is less prone to damage. The gate restricting access to the Level 1 loop would remain closed from April-June, but specific management recommendations including timing window specifics will be explored with False Rue Anemone experts. This approach will also limit trail damage, as spring flows in this low-lying area result in users moving off trail to avoid muddy conditions.
- Educational signage will provide context to the closures and compel compliance.
- Although crossings are not being included based on the 2018 Council Resolution, pending the success of the Level 2 trail from A10 to A12, crossing A may need to be discussed as part of the adaptive management plan for False Rue-Anemone. Limiting the influx of additional users is as important as directing existing users away from sensitive habitat when establishing a sustainable trail plan.

**EEPAC and ACACC agree that increased accessibility through this section makes sense in the form of Level 2 and Level 1 trails. Additional management efforts in the form of seasonal gating, enhanced creekside resting locations and educational signage shall be incorporated to limit traffic around the False Rue community during key phenological stages. These measures also aim to limit traffic moving from the Glenridge area south, through the SAR habitat to the Gloucester area.**



**Next Steps:**

Review the remaining Sherwood Forest Orchard Park section of the study area for the February 25<sup>th</sup> meeting.

**Medway Valley Heritage Forest Conservation Master Plan  
Phase 2: South of Medway Creek  
(Metamora, Longbow, Doncaster Gate, Glenridge)  
Virtual Meeting February 25, 2021  
Meeting Minutes**

**Affiliations**

City Planning	Mike Fabro, Emily Williamson
ACCAC (former)	Jacqueline Madden, Michael Dawthorne
EEPAC	Sandy Levin, Susan Hall
UTRCA	Brent Verscheure

**General:**

Review of the previous trail plan agreements between EEAPC and ACACC:

- Attawandaron: Increased accessibility through this section makes sense in the form of a Level 3 or Level 2 trail.
- Snake Creek: Increased accessibility through trail realignment and formalizing the existing Level 1 trail in this section.
- Elsie Perrin: increased accessibility through this section makes sense in the form of a Level 2 trail as delineated during the November 2019 site visit.
- Gloucester: Increased accessibility through this section makes sense in the form of Level 2 and Level 1 trails in conjunction with a trail closure to limit traffic moving from the Gloucester area north to the Glenridge area.
- Glenridge: Increased accessibility through this section makes sense in the form of Level 2 and Level 1 trails. Additional management efforts in the form of seasonal gating, enhanced creekside resting locations (natural in appearance) and educational signage shall be incorporated to limit traffic around the False Rue-Anemone community during key phenological stages. These measures also aim to limit traffic moving from the Glenridge area south, to the Gloucester area. Further discussion and review of this section below.

Update from UTRCA/ City meeting:

In general, UTRCA Environmental Regulations staff support and agree with the principles that provide the framework for the (conceptual) CMP which includes the future formalization of existing trails, closure of informal trails, and overall strategic improvement to accessibility and connectivity, restoration and management, while ultimately having regard for hazard lands. It is acknowledged and understood that during future detailed design and implementation phases of the various components of the Medway Valley CMP, further consultation will be required with the UTRCA that will confirm the site/location specific technical assessments (i.e. geotechnical investigations, SWM and drainage considerations, grading, ESC plans etc.) required to support the proposed trail design, specific siting/location, and development.

**Metamora A17 East:**

- The future accesses leading onto Precious Blood Monastery and Brescia College lands will be maintained. The City notes that they have reached out to Western Huron and

Brescia and the institutions are generally supportive of these accesses leading onto their property in the current informal state.

**EEPAC and ACACC agree to the existing trail plan through this section, including maintaining the Metamora bridge.**

**Longbow A18 to A17:**

- Potential to change the Level 2 trail at the fork beyond the Wychwood boardwalk to a Level 1 (~ 50 m). This makes sense from a trail perspective but should take the small concrete infrastructure fixture into account, which may require access. City Planning will follow-up with Engineering services to determine if access needs to be maintained and revise to a Level 1 if possible.

**EEPAC and ACACC agree to the existing trail plan through this section, including maintaining the Metamora bridge, adjusting the forking section to a Level 1 if possible.**

**Doncaster Gate A19 to A18 A23 and A24:**

- Potential trail realignment needed along the creek and from A19 moving northeast. Specific alignment adjustments can be established through the detailed design of the plan once finalized.
- Pipe and manhole structure (WM502) remains unnaturalized and provides an access for users to create informal trails. City to follow-up to determine the lifecycle of this structure and any potential opportunities to limit traffic.
- Revising signage in this area to address bike use and clearly define the trail form A23/A24 north needs to be considered. A TAG walk to ensure that the access is appropriately sited to reduce informal trail creation and use will be included in this area as part of the detailed design stage.

**EEPAC and ACACC agree to the existing trail plan through this section with minor adjustments to the existing alignment were appropriate.**

**Review of Glenridge:**

- Review of the proposed Level two trails to crossing A. The trail from A5 to crossing A on the northwest side should be maintained as a Level 1 trail, rather than be closed.
- Discussion included the importance of providing an option for Glenridge users to leave the area as well as limit the influx of users from other areas. Several options were discussed as points to consider for future works, as appropriate; 1) Easement from Glenridge north to Fanshawe (UTRCA notes hazard lands), 2) Trail connection along the former informal trail along from crossing A along east bank north to Fanshawe (UTRCA notes hazard lands), 3) Review the feasibility of crossing A as part of future adaptive management efforts. EEPAC is concerned that if adaptive management strategies are going to be assessed at a later stage, that the metrics around this be outlined through this plan. The specifics falls outside of this CMP update, but would be requested through Council if and as appropriate.
- False Rue-Anemone are a floodplain plant and are very resilient to changing conditions, and that through the management efforts of the City and UTRCA the most recent monitoring shows that the community has increased. Follow-up, the Medway Valley False Rue-Anemone population (Glenridge) has increased between 347- 369% from 2014 to 2020 (Dillon, 2020).

**EEPAC and ACACC agree to the trail plan through this section, including Increased accessibility in the form of Level 2 and Level 1 trails. Additional management efforts in the form of seasonal gating, enhanced creekside resting locations (natural in appearance) and educational signage shall be incorporated to limit traffic around the False Rue-Anemone community during key phenological stages.**

**Next Steps:**

- City to provide updated Draft Mapping from these meetings to the group for review once revised by Dillon.

# Accessibility Advisory Committee

## Report

3rd Meeting of the Accessibility Advisory Committee

March 25, 2021

Advisory Committee Virtual Meeting - during the COVID-19 Emergency

Attendance                   PRESENT: J. Menard (Chair), T. Eadinger, N. Judges, A. McGaw, P. Moore, P. Quesnel and D. Ruston and J. Bunn (Committee Clerk)

ALSO PRESENT: L. Livingstone; D. Baxter, J. Dann, K. Grabowski, J. Hodgins, A. Husain, K. Killen, V. Kinsley, A. Macpherson, D. MacRae, J. Michaud, A. Spahiu, M. Stone, B. Westlake-Power and E. Williamson

ABSENT: M. Bush and K. Steinmann

The meeting was called to order at 3:02 PM.

### 1. Call to Order

#### 1.1 Disclosures of Pecuniary Interest

That it BE NOTED that no pecuniary interests were disclosed.

### 2. Scheduled Items

#### 2.1 2021 Core Construction Mitigation

That it BE NOTED that the presentation, dated March 25, 2021, from D. MacRae, Director, Roads and Transportation, with respect to the 2021 Core Construction Mitigation, was received.

#### 2.2 Medway Valley Conservation Master Plan Mapping

That the following actions be taken with respect to the Medway Valley Conservation Master Plan Mapping documents, as appended to the agenda:

a) the above-noted Medway Valley Conservation Master Plan, as presented at the meeting, BE ENDORSED by the Accessibility Advisory Committee; and,

b) the above-noted documents, as appended to the agenda, and the revised attached documents, BE RECEIVED.

#### 2.3 Major Projects 2021 Rapid Transit Update

That it BE NOTED that the presentation, dated March 23, 2021, from J. Dann, Director, Major Projects, A. Spahiu, Environmental Service Engineer and J. Hodgins, Environmental Services Engineer, Construction Admin (Major Projects), with respect to the Major Projects 2021 Rapid Transit Update, was received.

#### 2.4 Downtown Sidewalk and Enhanced Crosswalk Treatments

That it BE NOTED that the presentation, dated March 25, 2021, from K. Killen, Senior Planner, with respect to Downtown Sidewalk and Enhanced Crosswalk Treatments, was received; it being noted that a communication,

from A. Malcho, Vision Loss Rehabilitation Ontario, as appended to the agenda, with respect to this matter, was received.

2.5 Community Gardens Program Update

That it BE NOTED that the presentation, as appended to the agenda, from V. Kinsley, Supervisor, Neighbourhood Development and Support, with respect to an update on the Community Gardens Program, was received.

2.6 Playground Update

That it BE NOTED that the presentation, as appended to the agenda, from J. Michaud, Landscape Architect, with respect to an update on playgrounds, was received.

**3. Consent**

3.1 2nd Report of the Accessibility Advisory Committee

That it BE NOTED that the 2nd Report of the Accessibility Advisory Committee, from its meeting held on February 25, 2021, was received.

3.2 Municipal Council Resolution - 1st Report of the Accessibility Advisory Committee

That it BE NOTED that the Municipal Council resolution, from its meeting held on February 23, 2021, with respect to the 1st Report of the Accessibility Advisory Committee, was received.

3.3 Notice of Revised Application and Notice of Public Meeting - Official Plan and Zoning By-law Amendments - 1153-1155 Dundas Street

That it BE NOTED that the Notice of Revised Application and Notice of Public Meeting, dated March 11, 2021, from L. Davies Snyder, Planner II, with respect to Official Plan and Zoning By-law Amendments related to the properties located at 1153-1155 Dundas Street, was received.

3.4 Notice of Planning Application - Official Plan and Zoning By-law Amendments - 180-186 Commissioners Road West

That it BE NOTED that the Notice of Planning Application, dated March 12, 2021, from B. Debbert, Senior Planner, with respect to Official Plan and Zoning By-law Amendments related to the properties located at 180-186 Commissioners Road West, was received.

3.5 Pre-Construction Notice - Downtown Loop and Municipal Infrastructure Improvements Phase 1 - King Street

That it BE NOTED that the Pre-Construction Notice, dated March 3, 2021, from J. Dann, Director, Major Projects, with respect to the Downtown Loop and Municipal Infrastructure Improvements Phase 1 for King Street, was received.

**4. Sub-Committees and Working Groups**

4.1 ACCAC Sub-Committee Structure



That the discussion of the Accessibility Advisory Committee (ACCAC) Sub-Committee Structure BE DEFERRED to the April 2021 meeting of the ACCAC.

**5. Items for Discussion**

5.1 (ADDED) New Sidewalks in 2021 Infrastructure Reconstruction Projects - Discussion

That it BE NOTED that the Accessibility Advisory Committee held a general discussion with respect to the New Sidewalks in 2021 Infrastructure Reconstruction Projects.

**6. Adjournment**

The meeting adjourned at 5:12 PM.

# Environmental and Ecological Planning Advisory Committee

## Report

The 2nd Meeting of the Environmental and Ecological Planning Advisory Committee  
March 18, 2021  
Advisory Committee Virtual Meeting - during the COVID-19 Emergency

Attendance PRESENT: S. Levin (Chair), L. Banks, A. Bilson Darko, A. Boyer, S. Esan, P. Ferguson, L. Grieves, S. Hall, S. Heuchan, B. Krichker, K. Moser, B. Samuels, S. Sivakumar, R. Trudeau, M. Wallace and I. Whiteside and H. Lysynski (Committee Clerk)

ABSENT: E. Arellano, I. Arturo, A. Cleaver, J. Khan and I. Mohamed.

ALSO PRESENT: G. Barrett, C. Creighton, M. Fabro, J. MacKay, L. McDougall, M. McKillop, K. Oudekerk, B. Page, C. Saunders and E. Williamson

The meeting was called to order at 5:02 PM

### 1. Call to Order

#### 1.1 Disclosures of Pecuniary Interest

That it BE NOTED that M. Wallace disclosed a pecuniary interest in clauses 4.2 and 5.1, having to do with the properties located at 1934 Commissioners Road East and 3095 and 3105 Bostwick Road, by indicating that the proponents of the above-noted applications are members of the London Development Institute, his employer.

### 2. Scheduled Items

#### 2.1 Wastewater Treatment Operations Master Plan; Biosolids Management Master Plan; Greenway WWTP Flood Protection; Adelaide WWTP Flood Protection

That, the following actions be taken with respect to the Wastewater Treatment Operations Master Plan; Biosolids Management Master Plan; Greenway WWTP Flood Protection; Adelaide WWTP Flood Protection:

- a) the presentation appended to the agenda by Marcy McKillop, Environmental Services Engineer, BE RECEIVED for information;
- b) the Notice of Study Commencement and Public Information Centre for the Wastewater Treatment Operations Master Plan, BE RECEIVED for information; and,
- c) the Notice of Study Commencement for the Biosolids Management Master Plan, BE RECEIVED for information.

### 3. Consent

#### 3.1 1st Report of the Environmental and Ecological Planning Advisory Committee

That it BE NOTED that the 1st Report of the Environmental and Ecological Planning Advisory Committee, from its meeting held on February 18, 2020, was received.

3.2 Notice of Public Meeting - 3080 Bostwick Road

That it BE NOTED that the Notice of Planning Application, dated March 11, 2021, from L. Mottram, Senior Planner, with respect to a Draft Plan of Subdivision and Zoning By-law Amendment related to the property located at 3080 Bostwick Road, was received

3.3 Notice of Revised Application and Public Meeting - 1153-1155 Dundas Street

That it BE NOTED that the Notice of Planning Application, dated March 11, 2021, from L. Davies Snyder, Urban Regeneration Planner II, with respect to an Official Plan and Zoning By-law Amendment related to the properties located at 1153-1155 Dundas Street, was received

**4. Sub-Committees and Working Groups**

4.1 14 Gideon Drive and 2012 Oxford Street West

That the 14 Gideon Drive and 2012 Oxford Street West Working Group comments, appended to the Environmental and Ecological Planning Advisory Committee Agenda, BE FORWARDED to the Civic Administration for consideration.

4.2 Victoria on the River, Phase 6 - 1934 Commissioners Road East

That the Victoria on the River, Phase 6 (1934 Commissioners Road East) Working Group comments, appended to the Environmental and Ecological Planning Advisory Committee Agenda, BE FORWARDED to the Civic Administration for consideration.

4.3 435-451 Ridout Street

That the 435-451 Ridout Street Working Group comments, appended to the Environmental and Ecological Planning Advisory Committee Agenda, BE FORWARDED to the Civic Administration for consideration.

4.4 A Wetland Conservation Strategy for London: A Discussion Paper on Best Practices

That it BE NOTED that the Environmental and Ecological Planning Advisory Committee held a general discussion on the Wetland Conservation Strategy Discussion Paper and Lessons Learned.

4.5 Kelly Stanton ESA Ecological Restoration Plan

That, the following actions be taken with respect to the Kelly Stanton Environmentally Significant Area Ecological Restoration Plan Working Group comments:

a) the Civic Administration BE ADVISED that the Environmental and Ecological Planning Advisory Committee (EEPAC) commends both the City of London and the report authors for their liaising with and involvement of local naturalists in the initial field work and community groups as part of follow-up plans; and,

b) the Working Group comments, appended to the Environmental and Ecological Planning Advisory Committee Agenda, BE FORWARDED to the Civic Administration for consideration.

**5. Items for Discussion**

5.1 Notice of Application - 3095 and 3105 Bostwick Road

That a Working Group BE ESTABLISHED consisting of R. Trudeau (lead), L. Banks and S. Levin, with respect to the properties located at 3095 and 3105 Bostwick Road; it being noted that the Environmental and Ecological Planning Advisory Committee reviewed and received a Notice of Draft Plan of Subdivision Official Plan and Zoning By-law Amendment dated March 10, 2021 from M. Corby, Senior Planner and the associated Environmental Impact Study.

5.2 2021 Work Plan

That it BE NOTED that the Environmental and Ecological Planning Advisory Committee 2021 Work Plan, as of March 18, 2021, was received.

5.3 Medway Valley CMP Phase 2 Mapping

That the Civic Administration BE ADVISED that the Environmental and Ecological Planning Advisory Committee is supportive of the attached, revised, Medway Valley Conservation Master Plan Phase 2 mapping.

5.4 Nature is Reeling Article

That it BE NOTED that a TVOntario article entitled "Nature is Reeling" was received for information.

**6. Adjournment**

The meeting adjourned at 7:18 PM.