



London
CANADA

SoHo Thames Valley Corridor – Natural Playground and Park Redevelopment

Presentation to ACCAC

June 24, 2021

london.ca

- 1 Thames Valley Parkway**
- 3.0m Wide Multi-use Pathway
 - Connection to Neighbourhood ROW's, Existing TVP and Amenities
 - Accommodate Potential Widening of Wellington Street and Bridge

- 2 Urban Park Corridor**
- Between Wellington and Colborne Street
 - Public Gathering Spaces
 - Enhanced Key Entrance Points to Thames Valley Corridor
 - Lighting
 - Improve Key Sight Lines / Views through Potential Selective Removal of Invasive Trees and Shrubs
 - Support Recommendations / Restrictions identified in EIS

- 3 Ecological Enhancements**
- Enhancements to Existing Woodland (per EIS)
 - Enhancements to Woodland Buffers (per EIS)
 - Invasive Species Management
 - Enhancements to Turtle Nesting Habitat
 - Enhancement of Existing Vegetation

- 4 Shared Pedestrian / Vehicular Drive**
- Between Waterloo to Colborne Street
 - 9.0m Wide Shared Corridor is a Flexible Space
 - Supports Programming & Events
 - Single One Way Drive and Parallel Parking
 - Complement Urban Park and TVP
 - Incorporate LID Measures to Direct and Manage Storm Water
 - Key Entrance Points for Pedestrians & Vehicular Access
 - Integrated with Urban Park
 - Lighting

- 5 Midblock Connection**
- 12m Right of Way (two-way)
 - Asphalt Surface
 - Public Municipal Road
 - Native Deciduous Tree Planting
 - Lighting
 - Vehicular and Pedestrian Circulation
 - Access to Phase 1 Development

- 6 District Park**
- Turtle Themed Experiential Playground
 - Low Key Pedestrian Connections to Thames River for Canoe Launch
 - Future Community Gardens
 - Enhancement of Existing Vegetation





District Park – London, ON

DESIGN DEVELOPMENT

February 4, 2021



District Park - London ON

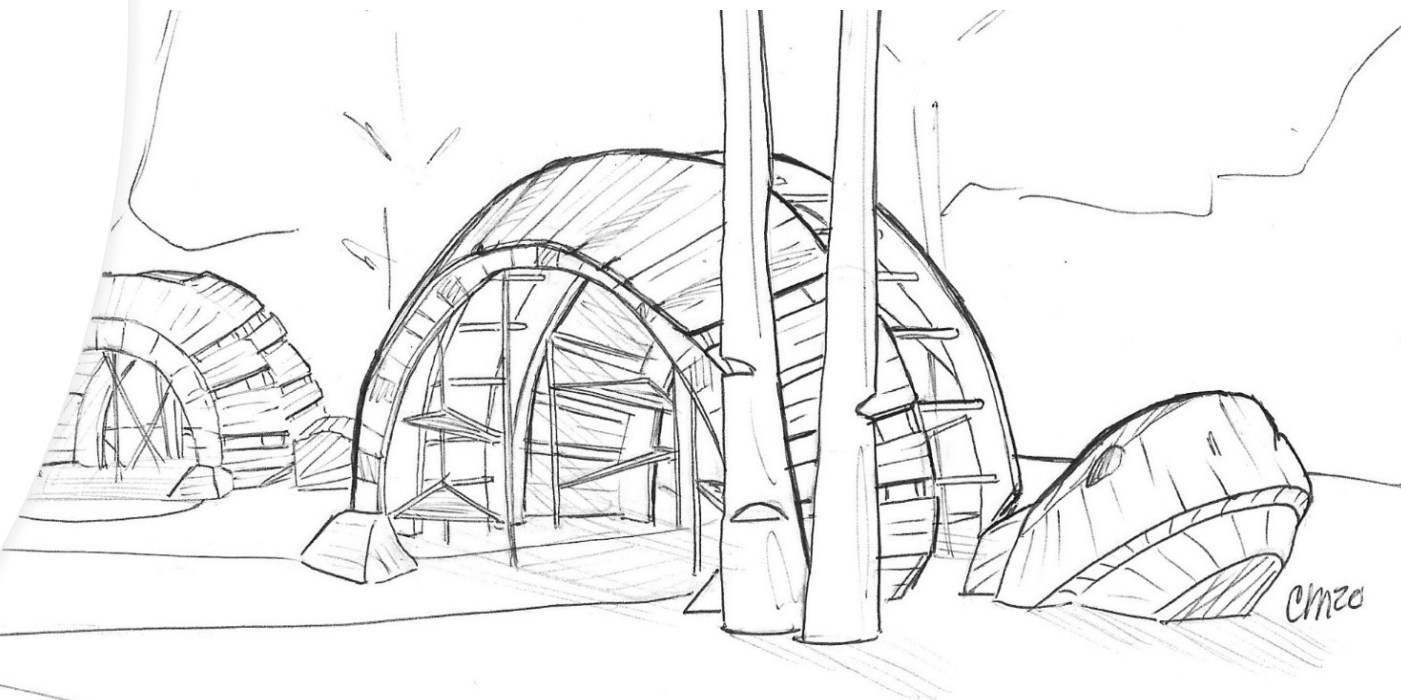
CONCEPT: TURTLES

The proposed concept combines the focus of accessible play elements with the storytelling inspired by turtle families in the Thames River.

Each turtle offers a different climbing experience. The Mama Turtle offers a more open space for older age groups to explore new heights and to socialize on flex form seats. The Baby Turtle provides a more intimate space for little ones to hang out and challenge their abilities. The Baby Turtle has a transfer bench leading to an interior flex form hammock so children of all abilities can experience the playful elements these turtles offer.

Elements such as notched logs and a log jam slide all play into the narrative of this family of turtles wading through the Thames River. Planting and trees act as the bank to these turtle's river and provide shade to the playground.

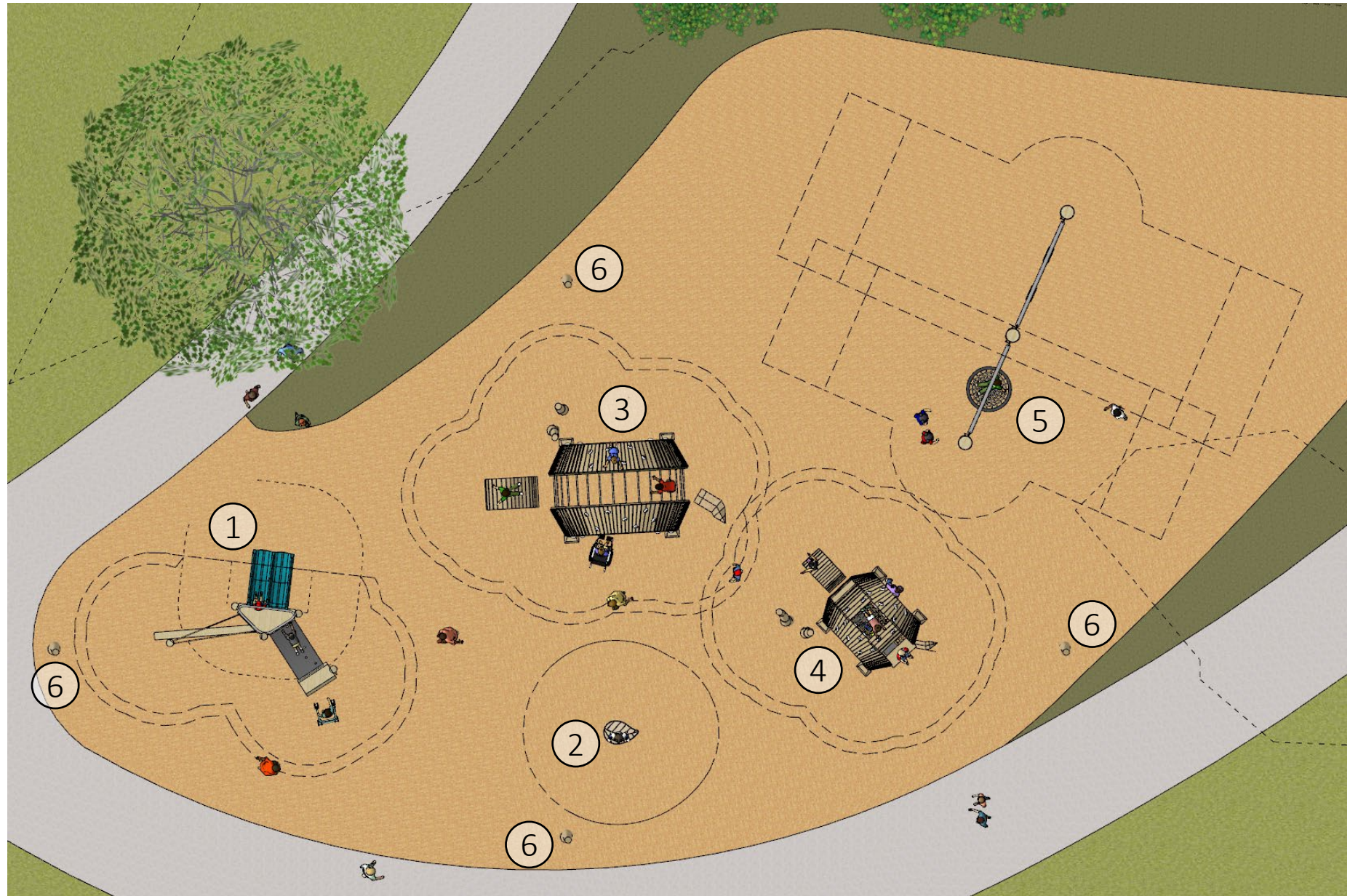
A double bay swing for multiple users is positioned away from the other equipment for safety.



PLAN VIEW
District Park

1. Slide Platform 900
2. Wobble Board (Leaf shown)
3. Mama Turtle Sculpture with 2 Notched Posts
4. Baby Turtle Sculpture with 2 Notched Posts
5. Double Bay Swing – 2 Belts, 1 Basket
6. Carved Posts located in cardinal directions

Note: Surfacing is conceptual and is outside of Earthscape's scope.









COLOUR OPTIONS

Turtles and Posts

*only mama turtle shown



Gradient Stain on Posts

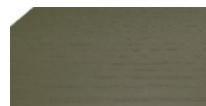
Proposed Sansin Stains



Moss Green



Acorn



Army Green

Rock Climbing Hold Colours Options



EARTH TONE
BROWN
11-11



EARTH TONE
MOSS GREEN
ACH-5

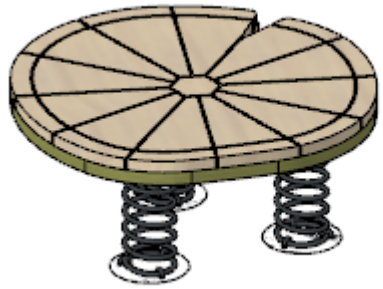
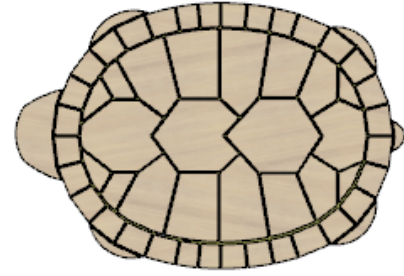
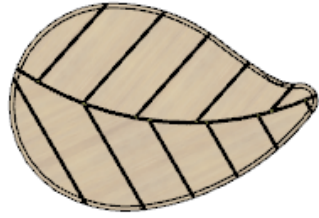
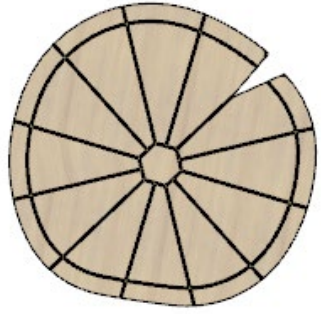


EARTH TONE
DUNE
15-06

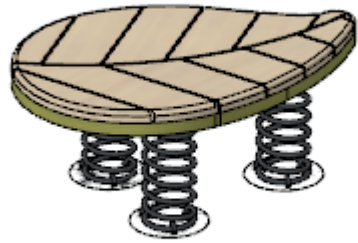


EARTH TONE
TAUPE
ACH-7

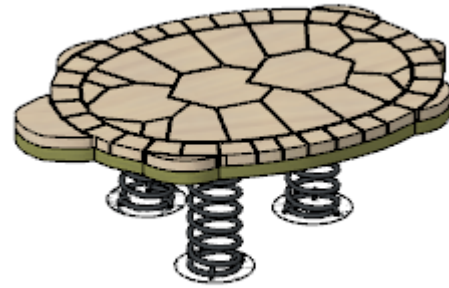
WOBBLE BOARD
Alternate Shapes



LILY PAD

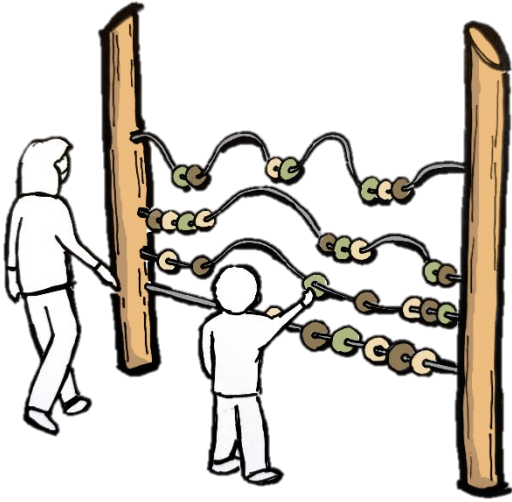


LEAF



TURTLE

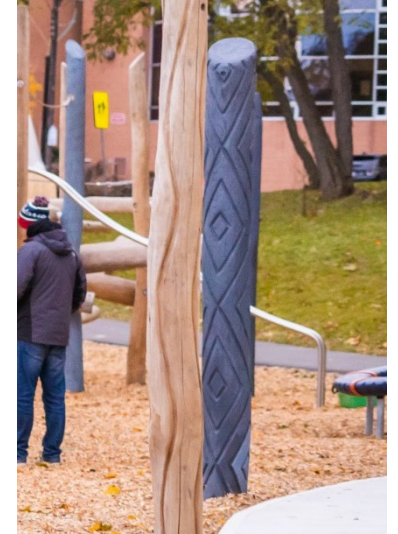
OPTIONAL ITEMS



Abacus Play Panel – Currently in R&D, Final design may vary



Talk Tube



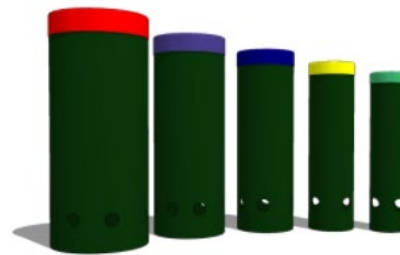
Carving on Robinia Post – Pattern over entire log



Cadence



Lilypad Cymbals -
Green Anodized



Tuned Drums



DISTRICT PARK
LONDON, ON

INCLUSION SCORECARD

February 4, 2021

DISTRICT PARK LONDON, ON

ACCESSIBLE AND INCLUSIVE PLAY

The playground at District Park features an integrated play experience and variety of play opportunities for all ages and abilities. Every proposed piece of play equipment is on an accessible route and all elevated components are accessible by a transfer system (the slide platform and baby turtle). The physical and sensory play opportunities include swinging, climbing, sliding, hanging, balancing, wobbling, gathering, imaginative play.

This proposed design does not include traditional post and deck structures, but there are two transfer stations in the playground. These transfer stations lead to a variety of play opportunities like sliding climbing, and gathering.

Independent play by users with disabilities

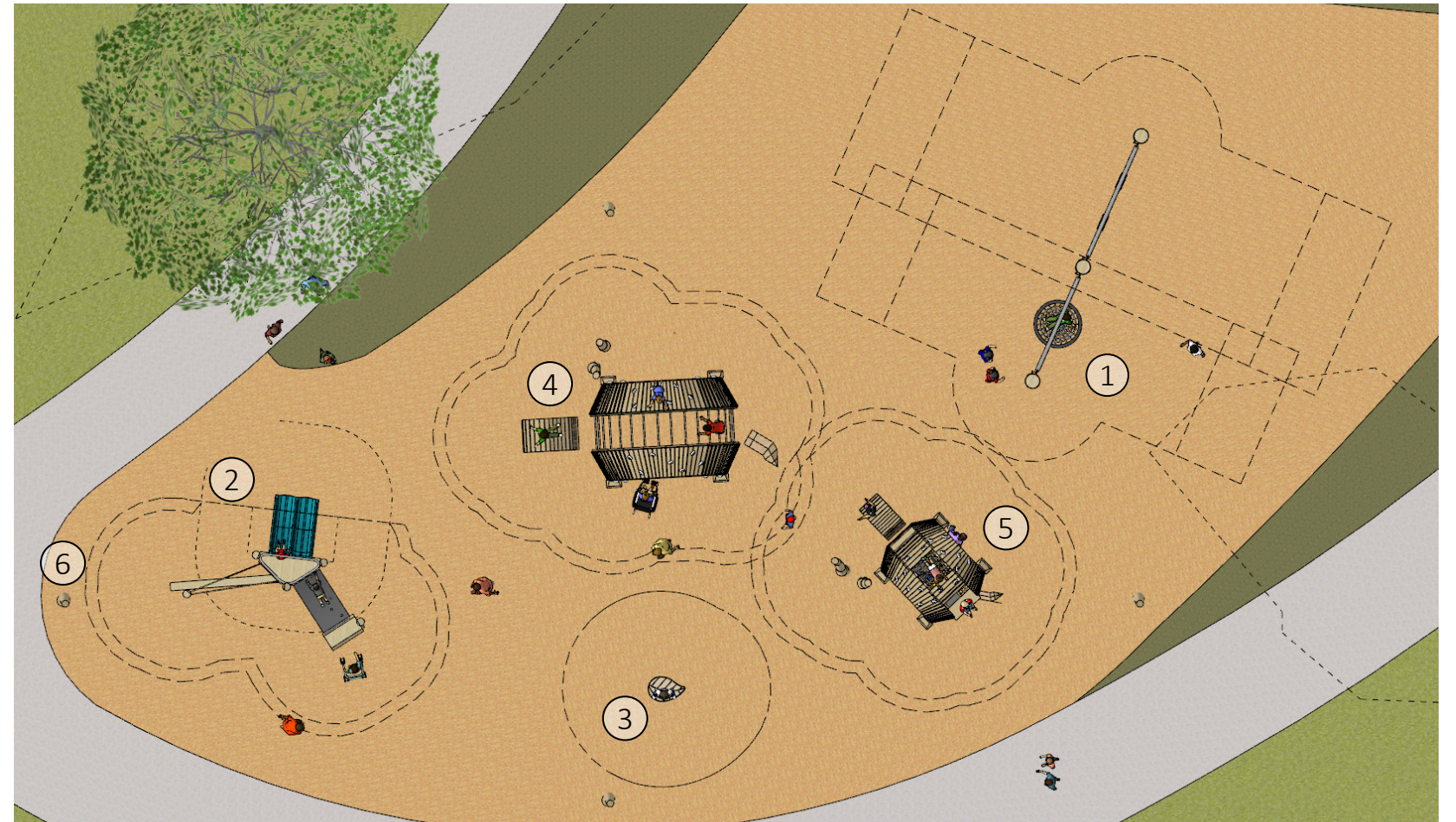
In addition to taking into account mobility-related disabilities, the proposed play components consider other physical and sensory disabilities. A variety of textures are integrated into the playground, including wood (both planed and hand-sanded), metal bars, ropes and nets, flexible textured rubber and plastic (slide). The proposal includes carved robinia posts (details to be determined) that provide additional textural interest. The turtle sculptures include stained wood pieces on the sides for colour-contrast visibility and interest. A range of vestibular stimulation is proposed with swings, a slide, and a wobble board, as well as the planar net inside of the Baby Turtle sculpture that allows for some movement. The two turtle sculptures create semi-enclosures that can be used as a retreat from the more active areas and equipment on the playground. The theming of the equipment provides the opportunity for imaginative play.

PLAY VALUE, APPEARANCE, AND NOVELTY

The proposed playground design provides a mix of play experiences while highlighting natural materials (the primary construction material is wood). The summary of play types is outlined in the Accessibility Evaluation Chart.

The theme of the turtle family is relevant to the location of this playground located near the Thames River in London. Introducing these creatures as larger-than-life climbable and interactive sculptures can spark creativity and imagination in children. The use of natural materials in this custom design makes this playground distinct and integrated into the site.

Because of the flexibility of the equipment and the range in challenge offered, the playground design has the potential to appeal to a wide variety of users.



Accessibility Evaluation

No.	Equipment Name	Ground Level Play Component	Elevated Play Component	Accessible	Play Type
1	Two-Bay Swings	1x Basket Swing 2x Belt Swings		Yes, accessible route	Swinging
2	3' Slide Platform	1x Transfer Bench	1x FlexForm Rubber Climber 1x 3' Slide 1x Post and Rope Climber	Yes, accessible route and transfer system	Sliding, balancing, climbing, gathering
3	Wobble Board	1x wobble board		Yes, accessible route	Wobbling/rocking
4	Mama Turtle Sculpture	1x Turtle Head Climber 1x Rung Arch Climber 2x Sling Seat Course 1x Notched Log Pair 1x Turtle Tail Climber		Yes, accessible route	Climbing, gathering, imaginative play
5	Baby Turtle Sculpture	1x Turtle Head Climber 1x Transfer Bench 1x Notched Log Pair	1x Net and FlexForm Rubber Sling	Yes, accessible route and transfer system	Climbing, gathering, wobbling, imaginative play
6	Carved Robinia Posts	4x Carved Posts		Yes, accessible route	Sensory Play



7215 Wellington Rd 86
Wallenstein, ON N0B 2S0

T. 519.804.6854
TF. 1.877.269.2972
F. 519.669.5085

earthscapeplay.com

DISTRICT PARK
LONDON, ON

OVERALL PLAN

DISTRICT PARK PLAYGROUND

ESTIMATED PLAYGROUND CAPACITY

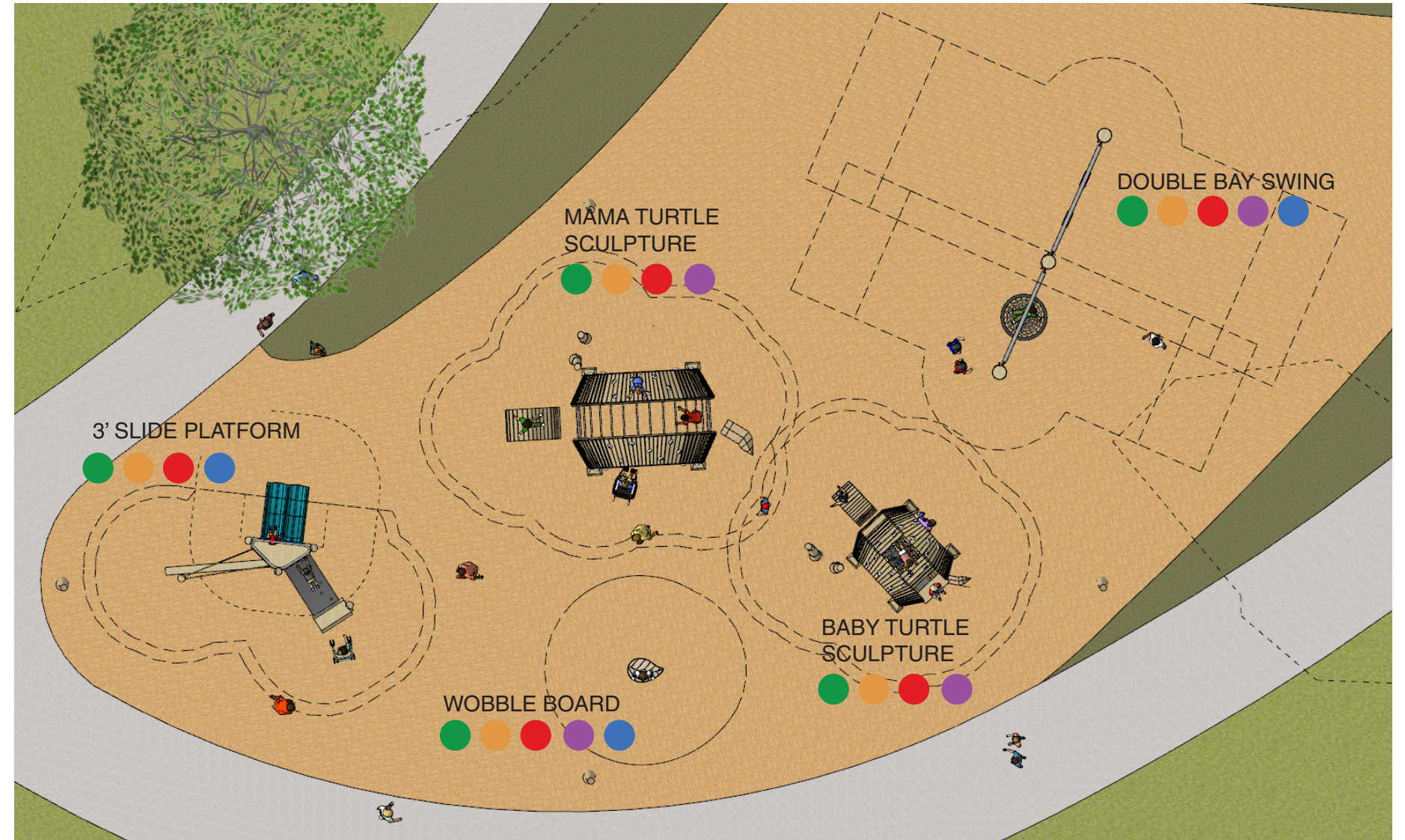
DOUBLE BAY SWINGS
4-5 users

MAMA TURTLE SCULPTURE
8-12 users

BABY TURTLE SCULPTURE
4-8 users

WOBBLE BOARD
1-2 users

3' SLIDE PLATFORM
5-8 users



FIVE ELEMENTS OF INCLUSIVE PLAY

SOCIAL/EMOTIONAL ●●●●●

Pieces that contribute to social and emotional development afford opportunities for social interaction, emotional development, and dramatic play. These elements can be used for play pretending and allow children to create their own play both alone and with others.

PHYSICAL ●●●●●

Pieces that contribute to physical play engage the muscles of the body and encourage the awareness of the body in space. This equipment provides opportunities for the experience of dynamic movement like climbing, swinging, sliding, rolling, spinning, etc

SENSORY ●●●●●

Sensory play engages the senses: sight, sound, smell, and touch. Examples include musical components, textured surfaces and elements, and features that engage light.

COGNITIVE ●●●●●

Equipment that engages cognitive function provides opportunities for creative thinking and risk assessment. An example is non-prescriptive pieces of equipment that give children the freedom and responsibility to use the equipment as they see fit, to work out play for themselves, and to problem-solve as they go.

COMMUNICATION ●●●

Cooperative play means working as a team and using communication as a tool to enhance the play value. Play equipment and environments that encourage collaboration contribute to cooperative play experiences.



7215 Wellington Rd 86
Wallenstein, ON N0B 2S0

T. 519.804.6854
TF. 1.877.269.2972
F. 519.669.5085

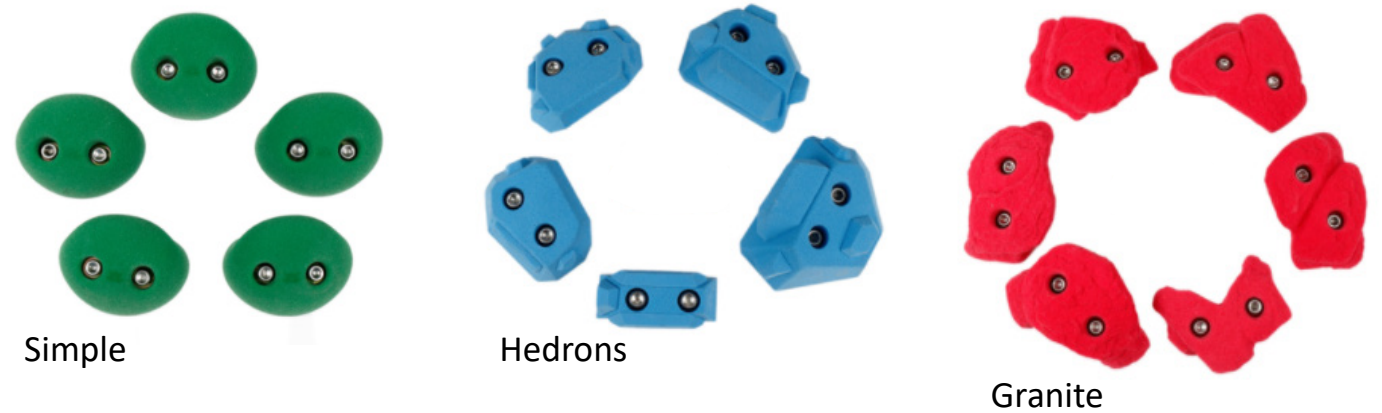
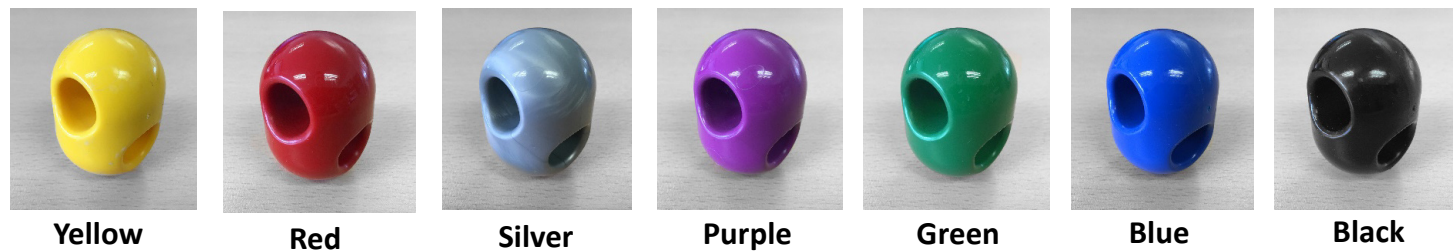
earthscapeplay.com

DISTRICT PARK
LONDON, ON

INCLUSION SCORECARD



NET CONNECTORS



7215 Wellington Rd 86
 Wallenstein, ON N0B 2S0
 T. 519.804.6854
 TF. 1.877.269.2972
 F. 519.669.5085
 earthscapeplay.com

DISTRICT PARK
 LONDON, ON

INCLUSION SCORECARD