

--	--

TO:	CHAIR AND MEMBERS CIVIC WORKS COMMITTEE MEETING ON APRIL 22, 2013
FROM:	EDWARD SOLDI, P. ENG. DIRECTOR, ROADS AND TRANSPORTATION
SUBJECT:	HAMILTON ROAD OLD VICTORIA ROAD TO VETERANS MEMORIAL PARKWAY ENVIRONMENTAL STUDY REPORT

RECOMMENDATION

That, on the recommendation of the Director, Roads and Transportation, the following actions **BE TAKEN** with respect to the Hamilton Road Environmental Assessment (TS2171 & TS2172):

- (a) The Hamilton Road Environmental Study Report **BE ACCEPTED**;
- (b) A Notice of Completion **BE FILED** with the Municipal Clerk; and
- (c) The Environmental Study Report **BE PLACED** on public record for a 30-day review period.

PREVIOUS REPORTS PERTINENT TO THIS MATTER
--

- Environment and Transportation Committee – January 11, 2010 – Hamilton Road Class Environmental Assessment; Appointment of a Consulting Engineer

BACKGROUND

Purpose:

This report provides Committee and Council with an overview of and seeks approval to finalize the Schedule 'C' Class Environmental Assessment for improvements to Hamilton Road from Old Victoria Road to Veterans Memorial Parkway (VMP) as shown on Figure 1.

Figure 1 - EA Study Area



The 2004 Transportation Master Plan identifies Hamilton Road, between Old Victoria Road and VMP, for widening to 5 lanes and this was confirmed in the Smart Moves 2030 TMP. The project is identified in the Development Charges Background Study and the City's Growth Management Implementation Strategy.

Hamilton Road between Old Victoria Road and VMP comprises two lanes with a rural cross section. Traffic signals exist at the Old Victoria Road/Commissioners Road and Veterans Memorial Parkway intersections. Hamilton Road has a variety of land uses which abut the roadway including industrial to the south and agricultural to the north with localized institutional and residential. Road improvements along this corridor are driven predominantly by industrial

--	--

and residential development in the area. Development of the Innovation Industrial Park south of Hamilton Road is increasing the volume of traffic, including a substantial increase to truck volumes which decreased the service level of the corridor.

DISCUSSION

Context:

Stantec Consulting Ltd. was hired by the City of London to conduct the Environmental Assessment (EA) for Hamilton Road. This EA took all benefits and impacts into consideration during the alternative evaluation. The Environmental Study Report Executive Summary is contained in Appendix A. Factors that influenced the EA included:

- impact on the social, cultural and natural environment;
- technical considerations;
- future traffic patterns;
- existing and future land uses; and
- estimated costs.

Recommended Alternative

The EA recommends a number of improvements to improve traffic flow, minimize social impacts, and maximize social benefits. The improvements include:

- widening of Hamilton Road to four through lanes with staged implementation;
- a new roundabout at Old Victoria Road / Commissioners Road;
- intersection improvements including future traffic signals at Venture Gate;
- sidewalks on both sides;
- addition of street lighting; and,
- upgrades to storm drainage, and localized servicing improvements.

Consultation:

The public, relevant agencies and First Nations were solicited for input and kept informed throughout the entire EA process. All notices were mailed to local property owners, agencies and First Nations and advertised in newspapers.

Two Public Information Centres (PIC) were held during the EA process. The first PIC was held on March 24th, 2010 to introduce the project and to receive input and concerns. Public turnout was low with 10 attendees signing into PIC #1. Display boards explained background information on the project along with the EA process.

A second PIC was held on June 1st, 2011. This PIC presented the preferred design layout of Hamilton Road for input and comment. Public turnout was also low with 8 attendees signing in to PIC #2.

Consistent with all consultation points during the study, the public, agencies and First Nations were informed of the date of this CWC presentation and public participation meeting through a mailout and newspaper advertisements.

Project Phasing:

Phase 1 – Old Victoria Road / Commissioners Road Intersection Improvements

A roundabout is proposed in the near-term to improve operations at the intersection of Hamilton Road, Commissioners Road and Old Victoria Road. A roundabout accommodates the skewed configuration of this intersection and will serve the future traffic patterns. A roundabout was selected because of well documented roundabout advantages including benefits to safety, the environment, and operational costs. A roundabout is identified in the Old Victoria Area Planning Study and would improve the aesthetics of this gateway intersection.

The roundabout will initially be constructed as a single lane facility with the ability to expand to a multilane configuration in the future with the widening of Hamilton Road to the east. Phase 1 is identified for construction in 2016 in the current Capital Budget forecast. Construction is

--	--

currently proposed to be coordinated with two-lane upgrades to Old Victoria Road from Hamilton Road to Bradley Avenue, also proposed for 2016.

Phase 2 – Hamilton Road Widening

The longer term need includes the reconstruction and widening of Hamilton Road from a two lane rural cross section to a 4 lane urban cross section between Old Victoria Road and Veterans Memorial Parkway (VMP). This includes additional auxillary lanes at the intersections and traffic signals at Venture Gate. This phase is identified for construction in 2024 in the current Capital Budget forecast. The timing of this need is a function of the pace of development and associated traffic growth and will be prioritized in the Development Charges Background Study and reviewed closer to the date of implementation.

EA Issues:

Cultural Heritage

The Bostwick Cemetery is located on the south side of Hamilton Road, east of Venture Gate. It is listed as a priority rating of one in the City of London *Inventory of Heritage Resources*. Each EA alternative generated was developed to avoid impacts to the cemetery. As such, the Recommended Plan does not directly impact the cemetery, and provisions for working adjacent to the cemetery will be included in the final design and contract for construction.

Property Acquisition

Near-term property acquisitions for the implementation of Phase 1 will predominantly take place near the intersection of Hamilton Road and Old Victoria Road.

Longer term, the acquisition of narrow strip widenings is required sporadically throughout the corridor where the right-of-way is constrained.

The preliminary design was configured to maximize the use of the existing right-of-way and minimize property impacts. As realized on other projects, an opportunity exists for reduced land acquisition costs via a proactive voluntary acquisition process.

Stormwater Management

This area has undergone a number of background studies and environmental assessments that cover the ultimate stormwater management plan, specifically the Old Victoria Area Planning Study, the Airport Road South Area Plan, and the Airport Road South Industrial Stormwater Management Facilities Class EA. These reports provide detailed information on the existing conditions and long term proposed conditions based on future development of the area. A number of stormwater management facilities (SWMF) are proposed through other studies in order to manage the long term development needs for the area. The future system, particularly the proposed Airport Road SWMF 8, should ultimately manage the stormwater runoff from this portion of the Hamilton Road corridor. Temporary interim measures may be required if the system is not online and available to receive drainage at the time of the road improvements.

Costs:

The preliminary cost estimate for Phases 1 and 2 is approximately \$11.47 M. This is broken down into expenditures of \$5.91 M for the intersection improvements at Hamilton Road, Commissioners Road and Old Victoria Road in 2016, and \$5.56 M for the widening from Old Victoria Road to VMP in 2024. These values include watermain replacements, utility relocations, property, and engineering. The cost is broken down as follows:

--	--

Table 1: OPINION OF PROBABLE COSTS FOR FUTURE WORKS

Preliminary Cost Estimate (2013 dollars)	Phase 1 Hamilton Road / Old Victoria Road / Commissioners Road Roundabout	Phase 2 Hamilton Road Corridor
Engineering	\$670,000	\$650,000
Utilities	\$150,000	\$250,000
Property	\$820,000	\$690,000
Watermain	\$300,000	-
Construction	\$3,300,000	\$3,310,000
Contingency (10%)	\$670,000	\$660,000
Total	\$5,910,000	\$5,560,000

There are sufficient funds identified in the Capital Budget Forecast. This estimate will be used to fine-tune the project budget and inform the current Development Charges Background Study.

CONCLUSION

Summary and Next Steps:

1. A Schedule 'C' Class Environmental Assessment for improvements to Hamilton Road from Old Victoria Road to Veterans Memorial Parkway (VMP) has been undertaken.
2. An Environmental Study Report is ready for final public review. It was prepared with public and agency participation, and includes a preliminary design which provides mitigation measures for impacts associated with the widening.
3. Completion of this phase of the Municipal Class Environmental Assessment process requires that the ESR be placed on the public record for a 30-day review period.
 - Stakeholders are encouraged to provide input and comments regarding this study during this time period.
 - Should stakeholders feel that issues have not been adequately addressed, they provide written notification within the 30-day review period to the Minister of the Environment requesting further consideration.
 - Subject to no requests for a Part II Order being received, the project will be in a position to move forward to the design and construction stages in accordance with the recommendations of the study.
4. Phase 1 property acquisition and design activities will commence once the EA is completed.

--	--

Acknowledgements:

This report was prepared with assistance from Josh Ackworth, C.E.T. Technologist II of the Transportation Planning & Design Division.

PREPARED BY:	RECOMMENDED BY:
DOUG MACRAE, P. ENG DIVISION MANAGER, TRANSPORTATION PLANNING & DESIGN	EDWARD SOLDO, P. ENG. DIRECTOR, ROADS AND TRANSPORTATION
REVIEWED & CONCURRED BY:	
JOHN BRAAM, P.ENG. MANAGING DIRECTOR, ENGINEERING AND CITY ENGINEER	

Attachments: Appendix A – Environmental Study Report, Executive Summary

cc: Transportation Advisory Committee c/o Heather Lysynski
Isaac Bartlett, Stantec Consulting Ltd.

--	--

Appendix A

**ENVIRONMENTAL STUDY REPORT
EXECUTIVE SUMMARY**

This Environmental Study Report (ESR) was developed to document Phase 3 and Phase 4 of the Municipal Class Environmental Assessment (Municipal Engineers Association, October 2000, amended 2007) process as part of the Hamilton Road Widening from Commissioners Road/Old Victoria Road to Veterans Memorial Parkway Class Environmental Assessment and Preliminary Design Project. The widening of Hamilton Road at this location and associated intersection improvements was identified in the *City of London Transportation Master Plan* (Earth Tech and IBI Group, 2004) and confirmed in the 2012 Transportation Master Plan (AECOM).

A notice of study commencement was published in February 2010 at the beginning of the study and the notice of study commencement with associated correspondence was mailed to homeowners, the general public, businesses, municipalities, external agencies and interest groups. Two Public Information Centres (PICs) were held during the study to make sure that the consultation plan provided timely, user-friendly opportunities for input by the public. Additional meetings were held with stakeholders as requested. The final formal point of contact will occur during Detail Design. A Notice of Study Completion and review period for the Environmental Study Report (ESR) will be advertised for this study.

The purpose of this study is to implement roadway improvements to Hamilton Road between Commissioners Road/Old Victoria Road and Veterans Memorial Parkway. The addition of sidewalks to accommodate pedestrians, and improvements to the Commissioners Road/Old Victoria Road intersection and underground infrastructure, where required, are also included as part of the study.

This ESR documents the following details for the improvements to Hamilton Road:

- A description of the environmental considerations and impacts;
- The generation and evaluation of alternative design concepts leading to the selection of a preferred plan;
- A description of the consultation process and an explanation of how concerns raised by the public and review agencies have been addressed in developing the project; and
- A description of the environmental mitigation measures which will be undertaken to minimize environmental effects and commitments to future work.
- A description of the design elements proposed under the preferred plan.

To satisfy Phase 3 and 4 of the Municipal Class EA process, it was necessary to examine different intersection and road widening alternatives that would be able to address future transportation demands while minimizing impacts to existing property owners and environmental features. Two Corridor Alternatives and three Intersection Alternatives for the Hamilton Road/Commissioners Road/Old Victoria Road intersection were considered during the study:

- Corridor Alternative 1 – Widen the existing corridor from two to four lanes;
- Corridor Alternative 2 – Maintain the existing corridor with two lanes of traffic;
- Intersection Alternative 1 – maintain existing alignments with four lanes centered on the right-of-way (ROW);
- Intersection Alternative 2 – provide a roundabout with four lanes centered on the right-of-way (ROW); and
- Intersection Alternative 3 – north/south alignment improvements with four lanes centered on the right-of-way (ROW).

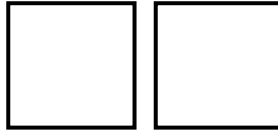


Figure E 1: Study Area

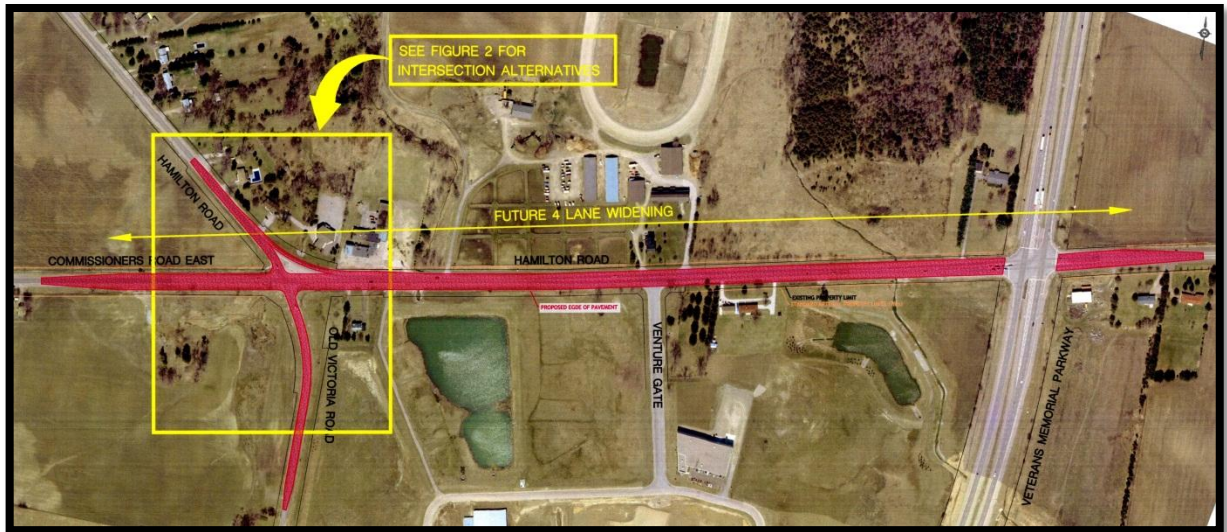
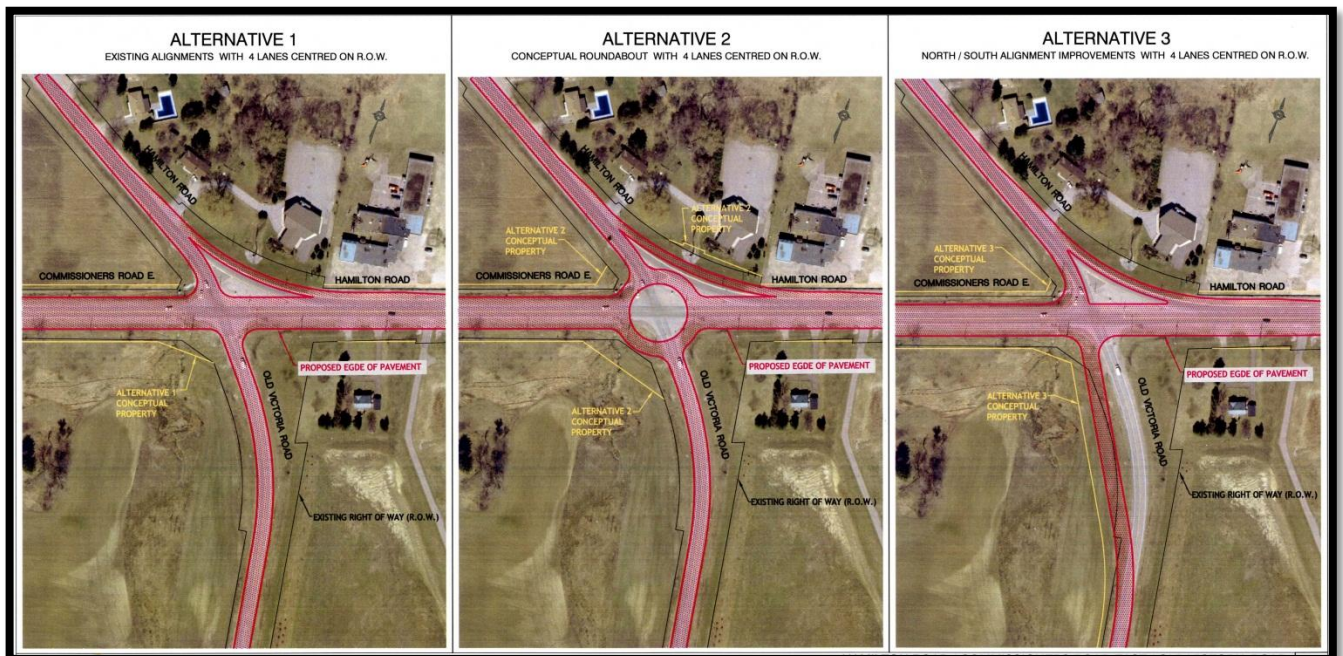


Figure E 2: Intersection Alternatives (PIC 1 Display)



A preferred alternative was developed based on the two Corridor Alternatives and three Intersection Alternatives presented to the public at the two Public Information Centres (PICs). The following elements are included with the preferred plan:

- Roadway Widening
 - Widen Hamilton Road from two lanes to four lanes
- Intersection Improvements
 - Preferred alternative includes a roundabout at the intersection of Hamilton Road / Commissioners Road / Old Victoria Road
 - Additional traffic signals warranted in long term at Venture Gate
 - Additional turning lanes at Venture Gate and on Hamilton Road at Veterans Memorial Parkway
 - Full illumination at the intersections and along the corridor
- Horizontal and Vertical Alignments
 - Maintain horizontal and vertical alignment on Hamilton Road
 - Revise horizontal and vertical alignment on Old Victoria Road to accommodate the roundabout approach

Agenda Item # Page #

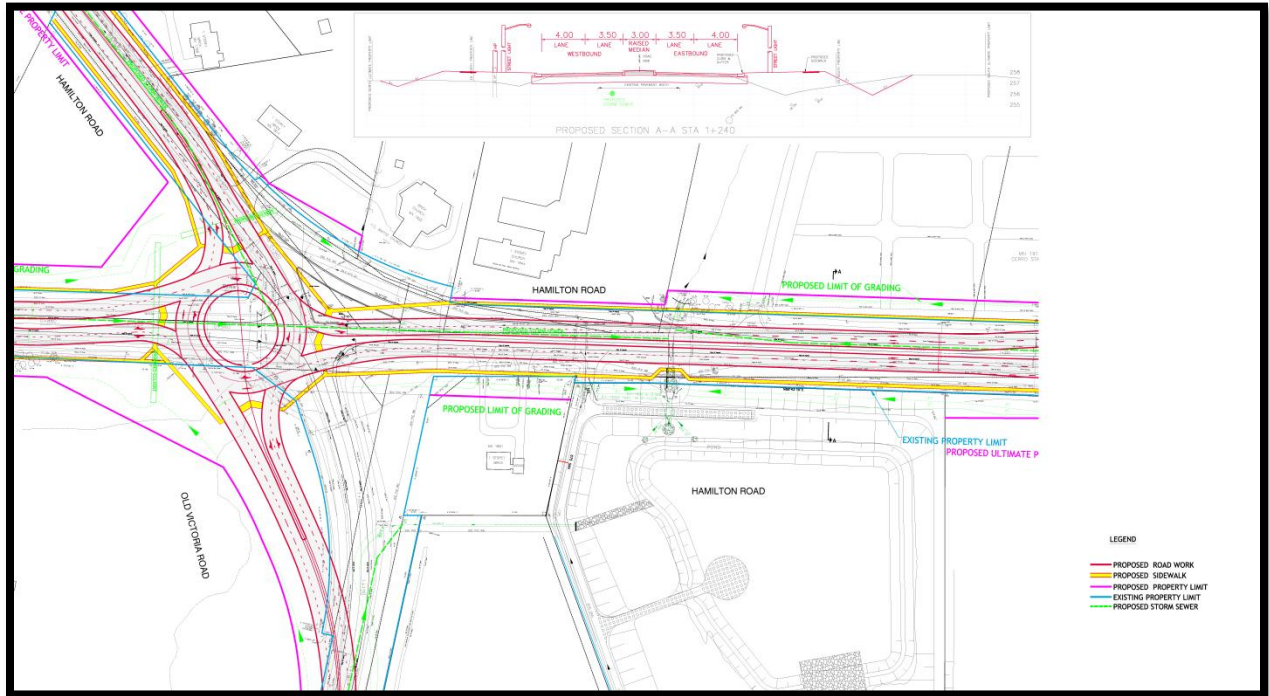
--	--

- Revise vertical alignment at roundabout to accommodate approaches on Hamilton Road and Commissioners Road
- Access
 - Include sidewalks on both sides connecting Commissioners Road to Veterans memorial Parkway
 - Entrance relocations proposed to improve access to properties at the intersections.
- Property Acquisition
 - Additional property required to accommodate road widening
 - Recommended Plan minimizes property impacts at intersection
 - Construction working easements will be required to accommodate minor grading operations
- Local Servicing
 - Curb and gutter with storm sewer from Commissioners Road to Veterans memorial Parkway
 - Replace aging infrastructure as warranted
 - Relocate hydro poles and adjust watermain location/depth as required

The preferred alternative received positive comments and is being brought forward as the Recommended Plan to proceed into detailed design, followed by construction. The recommended plan includes the above roadway improvements, is represented in the below figure, and has been included in full in Appendix 3.4.

--	--

Figure E 3: Recommended Alternative



The implementation of the Recommended Plan will be phased into short term and long term needs. The short term needs include the intersection improvements at Hamilton Road / Commissioners Road / Old Victoria Road, along with interim stormwater measures and utility relocations to accommodate the roundabout. Based on traffic volume counts, the short term improvements are scheduled for construction in 2016. The long term needs include the widening of Hamilton Road to four lanes, urbanizing Hamilton Road, and additional turning lanes on Hamilton Road at the intersections of Venture Gate and Veterans Memorial Parkway. An interchange at Hamilton Road and Veterans Memorial Parkway has been proposed as a potential long term solution to the access management of Veterans Memorial Parkway through the Veterans Memorial Parkway Interchange Class EA and Official Plan Amendment. The long term needs are projected to be implemented beyond the 20 year horizon.

Scheduling of the Recommended Plan will be reviewed with the recommendations of the 2012 Transportation Master Plan and prioritized in the Development Charges Background Study.