



VETERANS MEMORIAL PARKWAY NOISE STUDY

Civic Works Committee
Public Participation Meeting
April 22, 2013



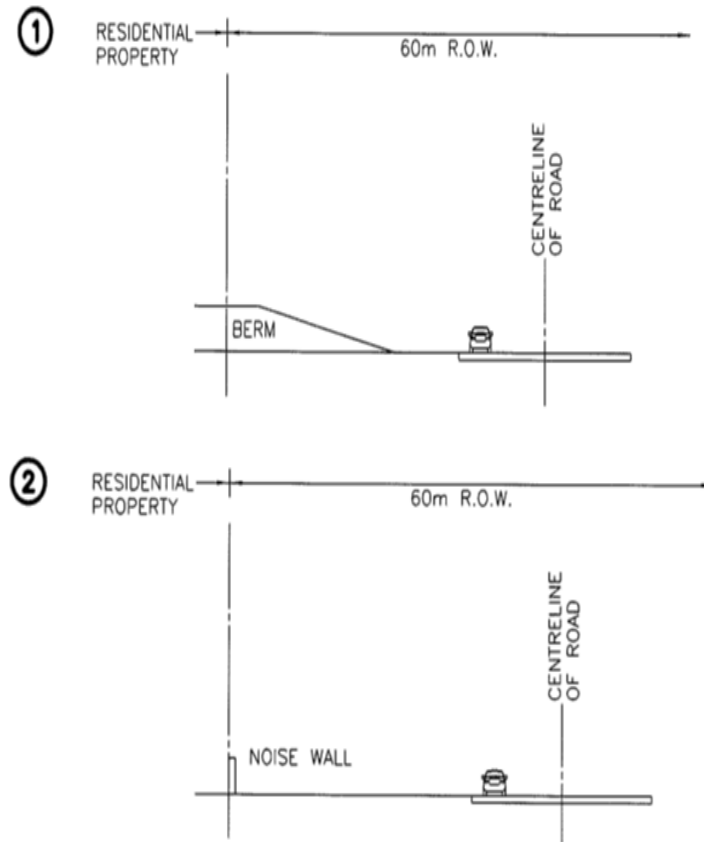
Noise Attenuation Basics

Triggers:

- initial land development, or
- adjacent road widening

Types:

- Berms
- Walls





Looking southerly along the VMP





East side of Simpson Crescent



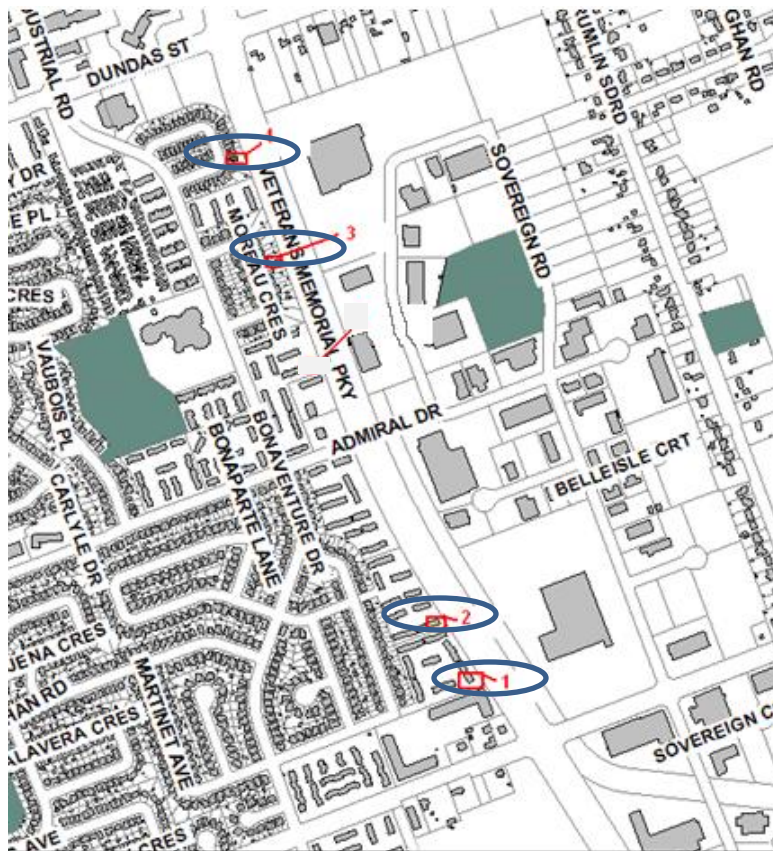


East side of 151 Martinet Avenue





Noise Study



June 2012:

- Three days of readings

Backyard locations:

248 Simpson Crescent

35 Moreau Crescent

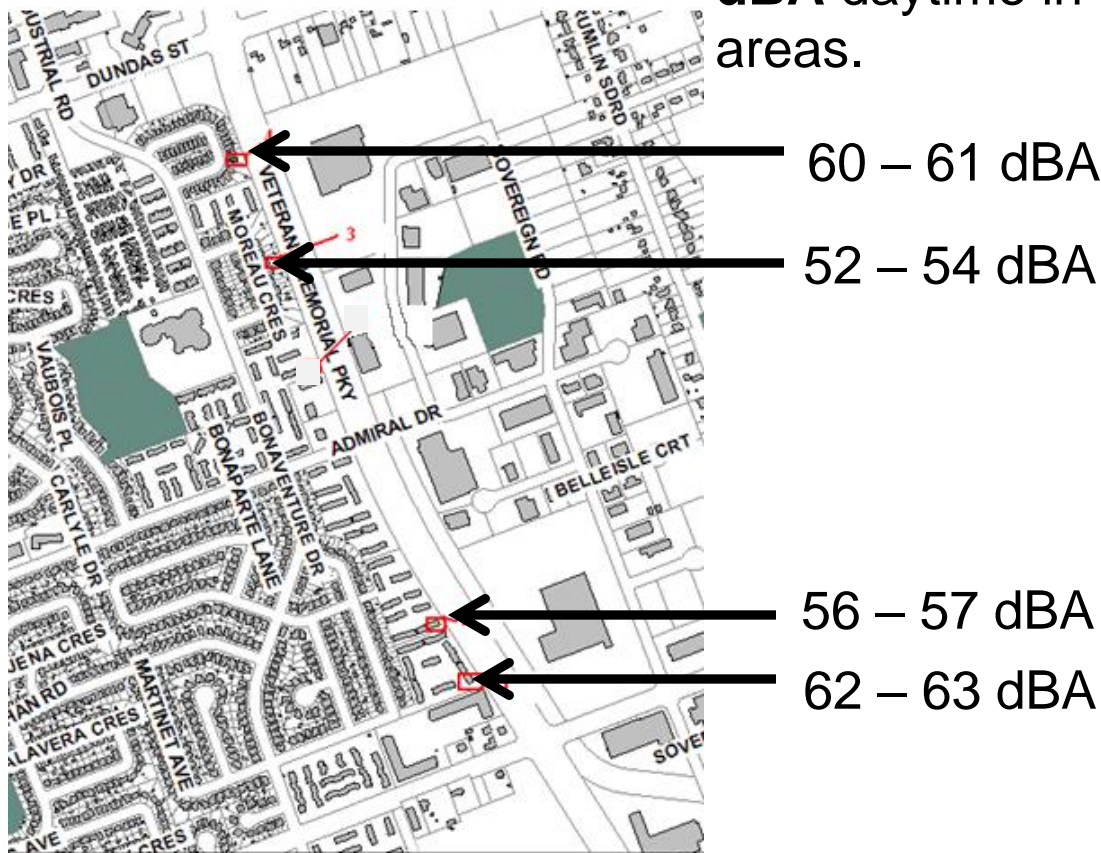
217 Martinet Ave, Unit 27

151 Martinet Ave, Unit 9



Results

The noise attenuation system is designed to mitigate daytime sound levels to **60 dBA** daytime in the rear yard amenity areas.

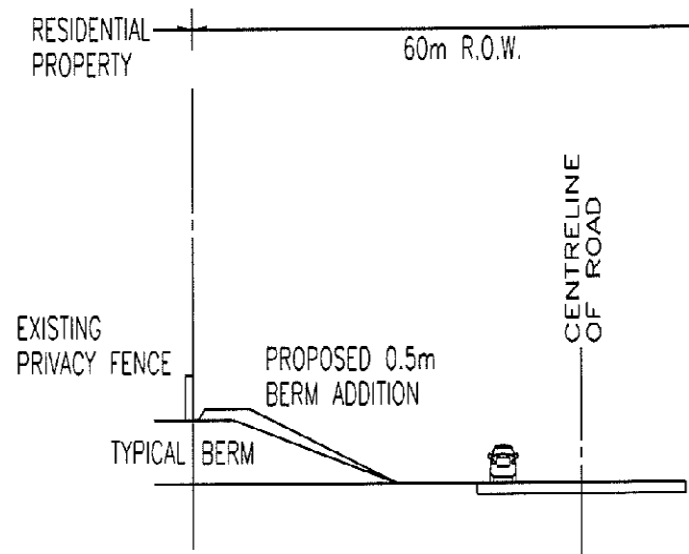




Deficiency Improvements

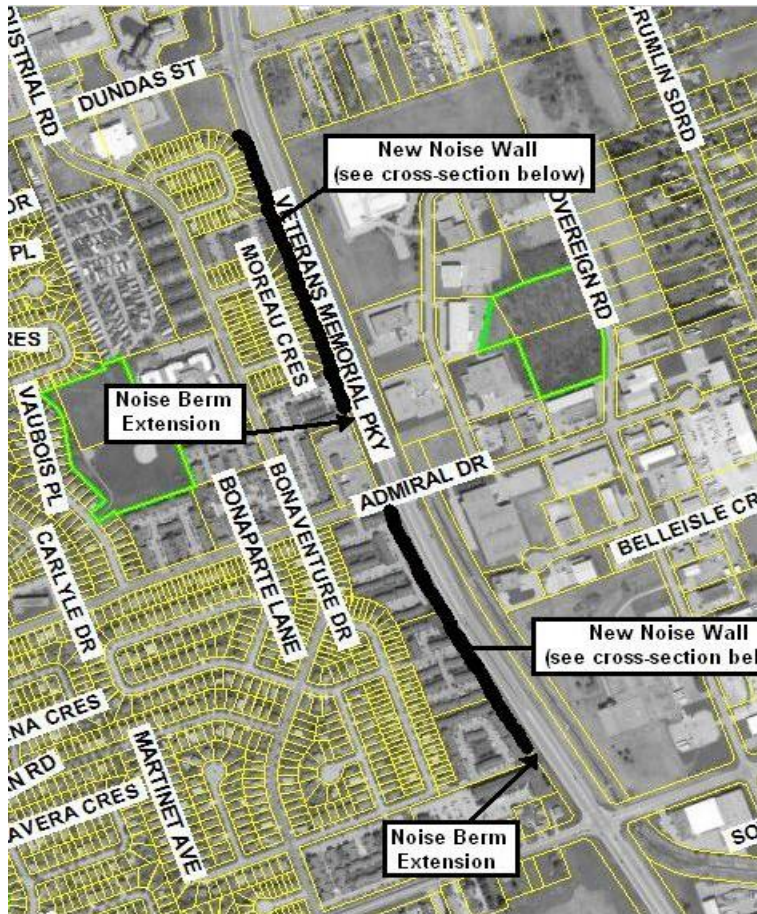


- Extend berm at two locations
- Increase berm height along Simpson Cres
- Est. Cost = \$300,000

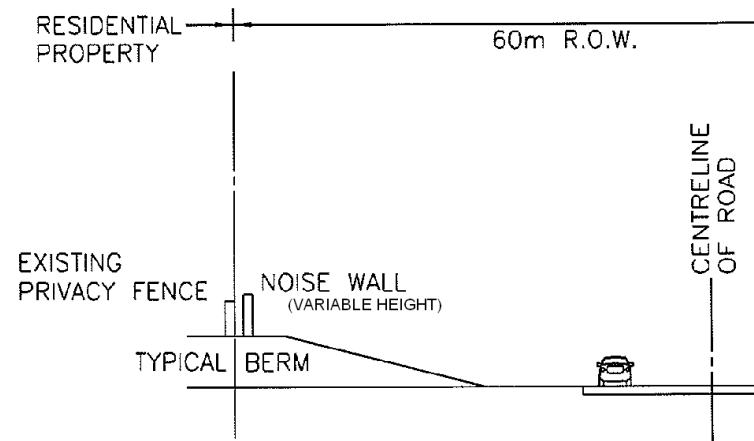




Enhancement Options



Options	Estimated Cost
0.6 m Noise Wall	\$0.68 M
1.8 m Noise Wall	\$1.5 M
2.4 m Noise Wall	\$1.7 M





Recommendation:

Civic Administration BE DIRECTED to introduce a 2014 budget item for the Veterans Memorial Parkway Noise Berm Improvements in the amount of \$300,000.