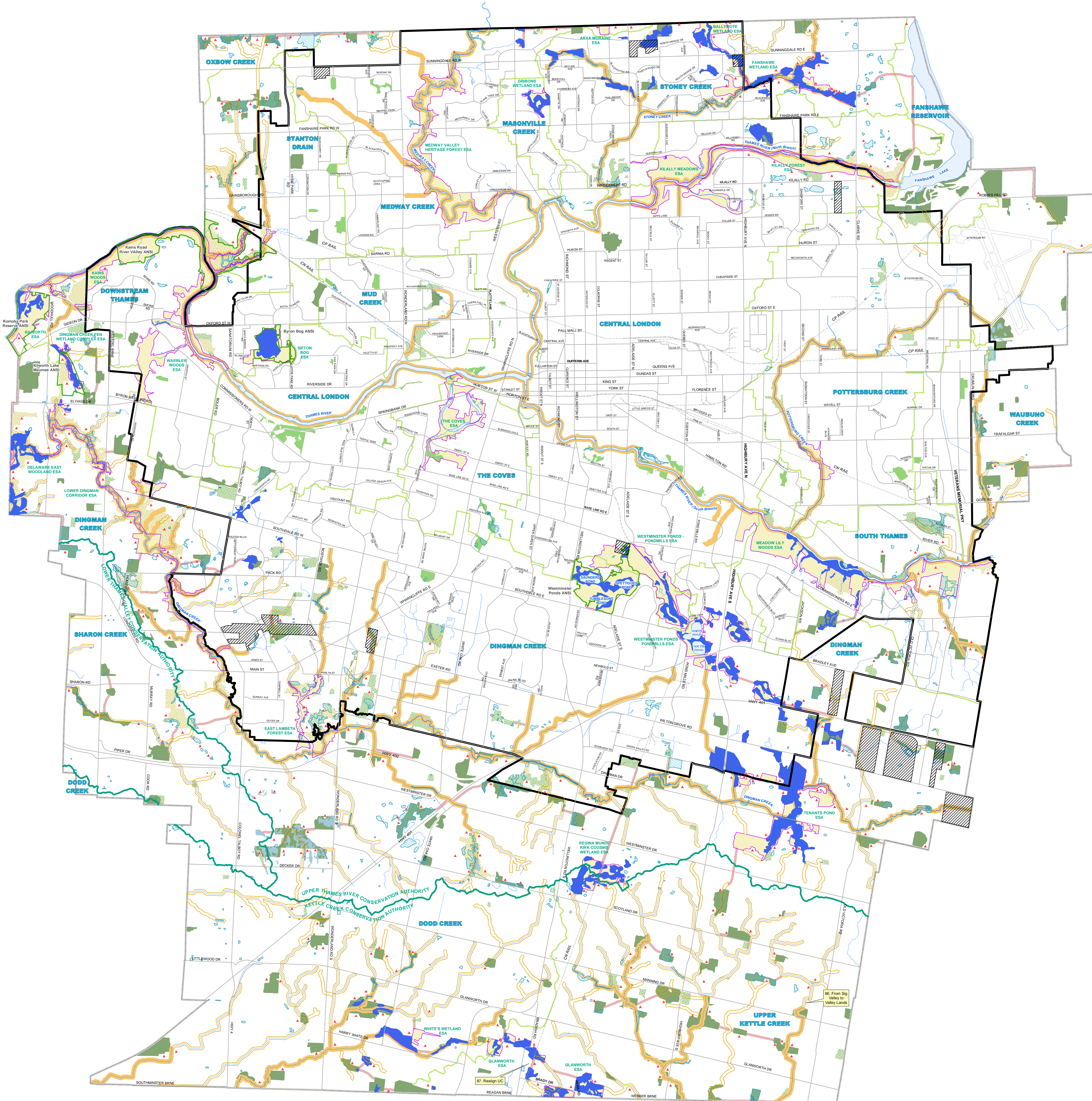


MAP 5 - NATURAL HERITAGE



LEGEND

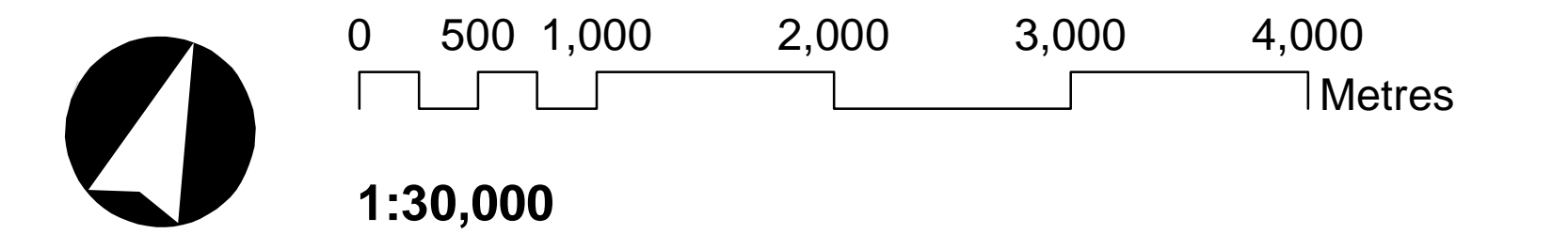
NATURAL HERITAGE SYSTEM

- Provincially Significant Wetlands
- Wetlands
- Unevaluated Wetlands
- Significant Woodlands
- Woodlands
- Significant Valleylands
- Valleylands
- Areas of Natural and Scientific Interest
- Environmentally Significant Areas (ESA)
- Potential ESAs
- Upland Corridors
- ▲ Potential Naturalization Areas
- Unevaluated Vegetation Patches

BASE MAP FEATURES

- Streets (See Map 3)
- Railways
- Urban Growth Boundary
- Water Courses/Ponds
- Water Bodies
- Conservation Authority Boundary
- Subwatershed Boundary
- Subwatershed Name

Subject to Site Specific Appeals



ADOPTED BY COUNCIL ON JUNE 23, 2016

APPROVED BY THE MINISTRY OF
MUNICIPAL AFFAIRS ON DECEMBER 28, 2016

LONDON PLAN CONSOLIDATED
OCTOBER 23, 2020

**THIS MAP MUST BE READ IN CONJUNCTION
WITH THE TEXT OF THE LONDON PLAN**

While every effort has been made to ensure that the mapping is accurate, a reader should verify all information contained in this map before acting upon it by contacting the City Clerk's Office, Suite 308, 300 Dufferin Avenue, London, Ontario, N6B 1Z2 or by calling (519) 661-2500 extension 4939