



**CITY OF LONDON**  
 CONSERVATION MASTER PLAN  
 MEDWAY VALLEY HERITAGE FOREST ESA (SOUTH)

**FIGURE 4a**  
 ENVIRONMENTAL MANAGEMENT STRATEGY:  
 PROPOSED SUSTAINABLE  
 TRAIL CONCEPT PLAN

Seasonal Barrier / Access Gate  
 Contour (5 metre Elevation)

**Existing Trails**  
 City Trail Outside of ESA  
 Informal Trail<sup>1</sup>  
 Managed Trail

**Managed Trails**  
 Future Connection Outside the ESA  
 Level One Trail  
 Level Two Trail  
 Level Three Trail  
 Improved Trail Surface

Butternut  
 False Rue Anemone

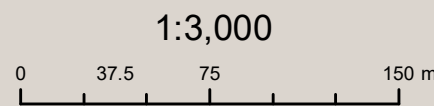
Amphibian Breeding Habitat  
 Habitat for Rare Species (American Gromwell)  
 Habitat for Rare Species (Cream Violet)  
 Habitat for Rare Species (Shrubby St. John's Wort)  
 Habitat for Special Concern Species (Green Dragon)  
 Seeps and Springs Area

**Management Zone**  
 Nature Reserve  
 Natural Environment  
 Utility Overlay (4 m)  
 Watercourse (also Nature Reserve)



MAP DRAWING INFORMATION:  
 DATA PROVIDED BY MNRF (2017) &  
 CITY OF LONDON (2016)

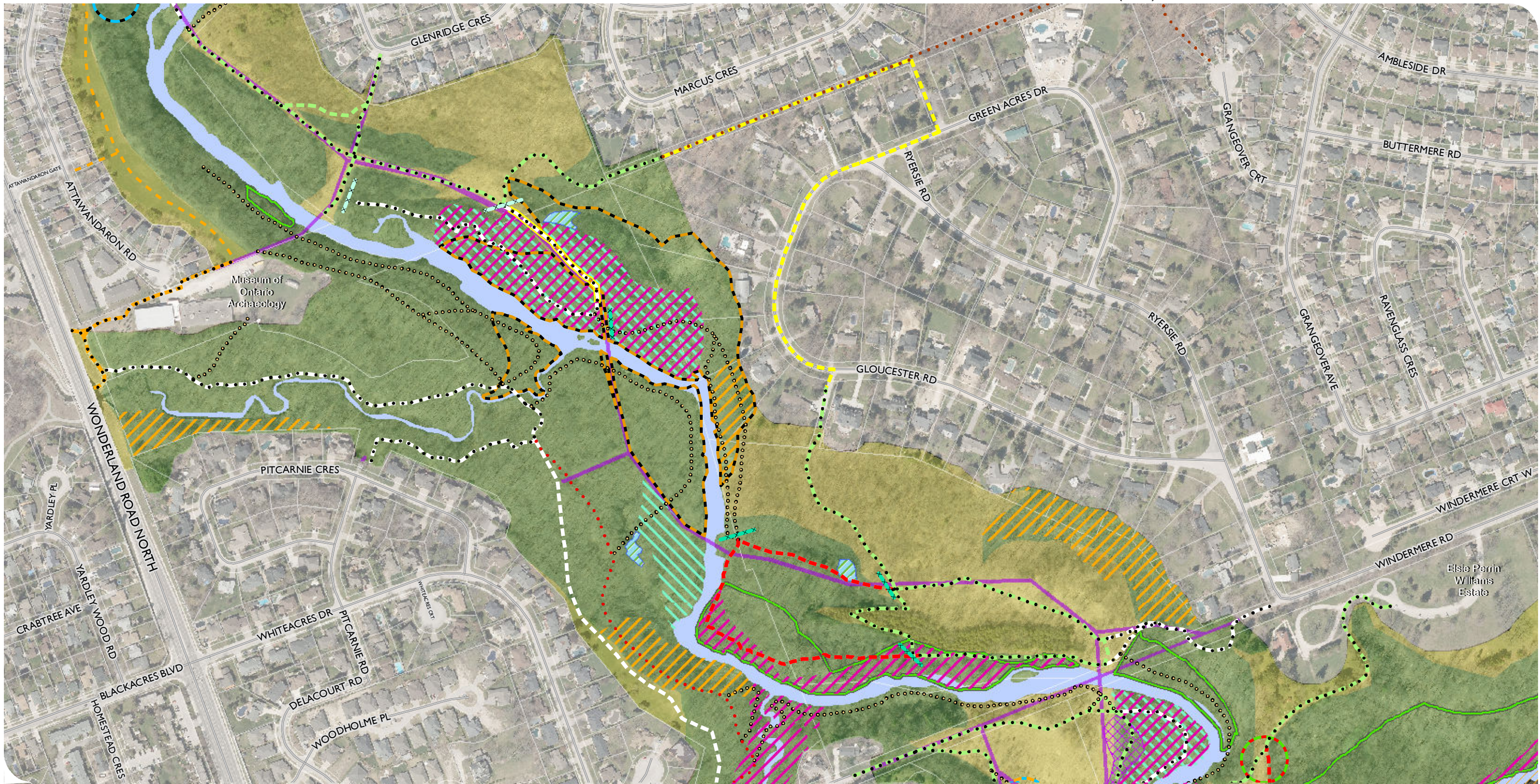
MAP CREATED BY: GMLK  
 MAP CHECKED BY: JLP  
 MAP PROJECTION: NAD 1983 UTM Zone 17N



<sup>1</sup>INFORMAL AND CLOSED EXISTING TRAILS DOCUMENTED DURING PHASE I ARE TO BE CLOSED AND RESTORED (SEE R016 ON FIGURE 2).  
<sup>2</sup>TEMPORARILY CLOSED TRAIL TO BE REOPENED/ REALIGNED. SECTIONS NOT REALIGNED WILL BE CLOSED AND RESTORED

PROJECT: 17-5428 STATUS: DRAFT DATE: 2021-03-19





**CITY OF LONDON**  
 CONSERVATION MASTER PLAN  
 MEDWAY VALLEY HERITAGE FOREST ESA (SOUTH)

**FIGURE 4b**  
 ENVIRONMENTAL MANAGEMENT STRATEGY:  
 PROPOSED SUSTAINABLE  
 TRAIL CONCEPT PLAN

- Western/Huron Properties
- Trail Closed Barricade
- Seasonal Barrier / Access Gate
- Contour (5 metre Elevation)

- Existing Trails**
- City Trail Outside of ESA
  - Closed Trail<sup>1</sup>
  - Informal Trail<sup>1</sup>
  - Managed Trail
  - Temporarily Closed Trail<sup>2</sup>

- Managed Trails**
- Future Connection Outside the ESA
  - Level One Trail
  - Level Two Trail
  - Level Three Trail
  - Improved Trail Surface

- Butternut
- Cucumber Magnolia
- False Rue Anemone
- Kentucky Coffee-tree

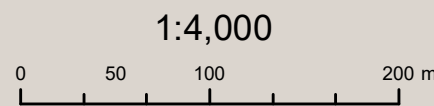
- Amphibian Breeding Habitat
- Habitat for Rare Species (American Gromwell)
- Habitat for Rare Species (Cream Violet)
- Habitat for Rare Species (Slender Satin Grass)
- Habitat for Special Concern Species (Green Dragon)
- Seeps and Springs Area

- Management Zone**
- Nature Reserve
  - Natural Environment
  - Utility Overlay (4 m)
  - Watercourse (also Nature Reserve)



MAP DRAWING INFORMATION:  
 DATA PROVIDED BY MNRF (2017) &  
 CITY OF LONDON (2016)

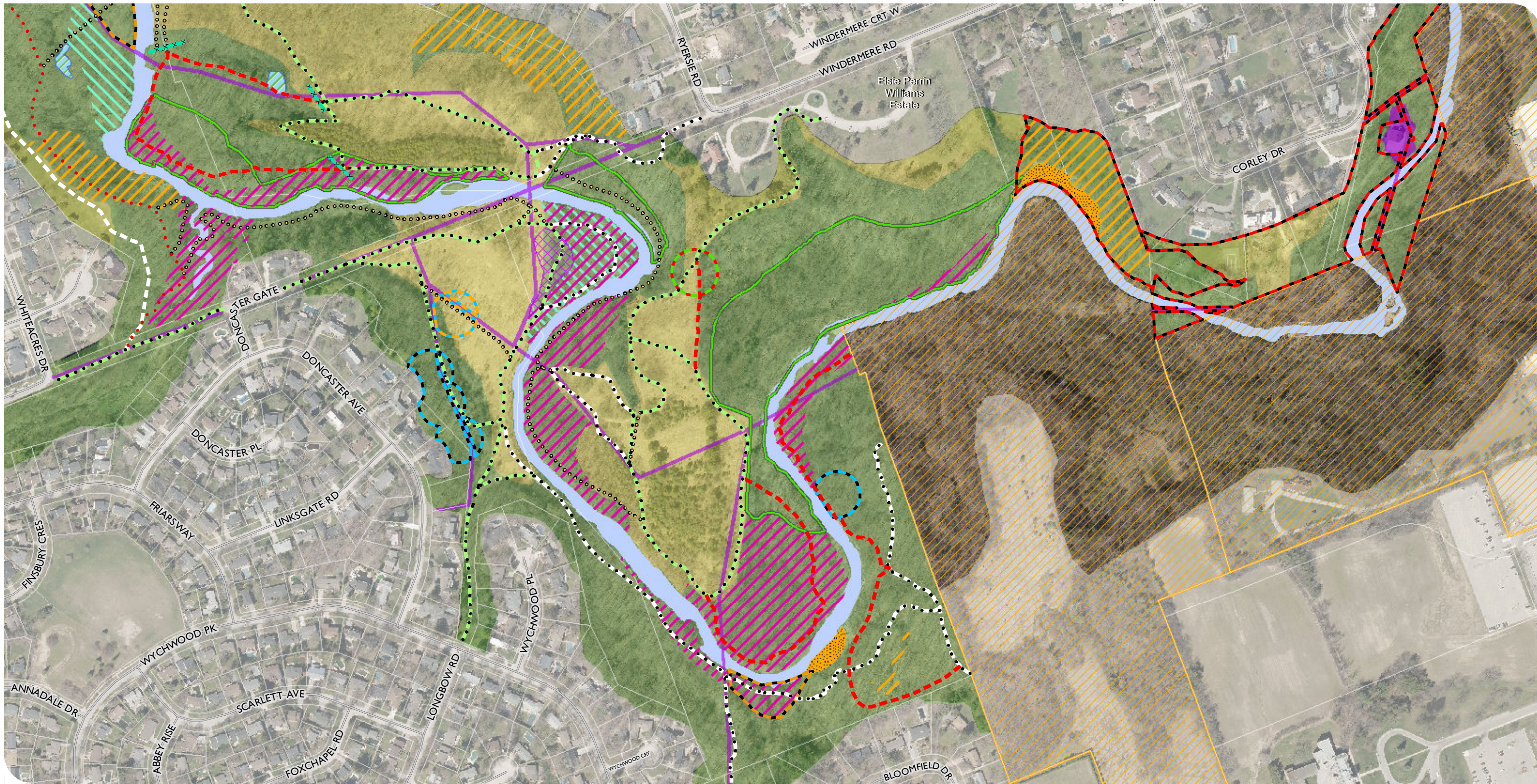
MAP CREATED BY: GMLK  
 MAP CHECKED BY: JLP  
 MAP PROJECTION: NAD 1983 UTM Zone 17N



<sup>1</sup>INFORMAL AND CLOSED EXISTING TRAILS DOCUMENTED DURING PHASE I ARE TO BE CLOSED AND RESTORED (SEE R016 ON FIGURE 2).  
<sup>2</sup>TEMPORARILY CLOSED TRAIL TO BE REOPENED/ REALIGNED. SECTIONS NOT REALIGNED WILL BE CLOSED AND RESTORED

PROJECT: 17-5428 STATUS: DRAFT DATE: 2021-03-19





**CITY OF LONDON**  
 CONSERVATION MASTER PLAN  
 MEDWAY VALLEY HERITAGE FOREST ESA (SOUTH)

**FIGURE 4c**  
 ENVIRONMENTAL MANAGEMENT STRATEGY:  
 PROPOSED SUSTAINABLE  
 TRAIL CONCEPT PLAN

- Western/Huron Properties
- Trail Closed Barricade
- Contour (5 metre Elevation)

- Existing Trails**
- Closed Trail<sup>1</sup>
  - Informal Trail<sup>1</sup>
  - Managed Trail
  - Temporarily Closed Trail<sup>2</sup>

- Managed Trails**
- Level One Trail
  - Level Two Trail

- Butternut
- Cucumber Magnolia
- False Rue Anemone
- Kentucky Coffee-tree
- Queensnake

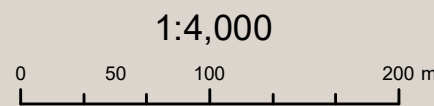
- Amphibian Breeding Habitat
- Colonially-Nesting Bird Breeding Habitat (Bank and Cliff)
- Habitat for Rare Species (American Gromwell)
- Habitat for Rare Species (Cream Violet)
- Habitat for Rare Species (Slender Satin Grass)
- Habitat for Special Concern Species (Green Dragon)
- Seeps and Springs Area

- Management Zone**
- Nature Reserve
  - Natural Environment
  - Utility Overlay (4 m)
  - Watercourse (also Nature Reserve)



MAP DRAWING INFORMATION:  
 DATA PROVIDED BY MNRF (2017) &  
 CITY OF LONDON (2016)

MAP CREATED BY: GMLK  
 MAP CHECKED BY: JLP  
 MAP PROJECTION: NAD 1983 UTM Zone 17N



<sup>1</sup>INFORMAL AND CLOSED EXISTING TRAILS DOCUMENTED DURING PHASE I ARE TO BE CLOSED AND RESTORED (SEE R016 ON FIGURE 2).  
<sup>2</sup>TEMPORARILY CLOSED TRAIL TO BE REOPENED/ REALIGNED. SECTIONS NOT REALIGNED WILL BE CLOSED AND RESTORED

PROJECT: 17-5428 STATUS: DRAFT DATE: 2021-03-19

