

CITY OF LONDON
 CONSERVATION MASTER PLAN
 MEDWAY VALLEY HERITAGE FOREST ESA (SOUTH)

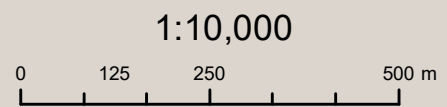
FIGURE 4
 ENVIRONMENTAL MANAGEMENT STRATEGY:
 PROPOSED SUSTAINABLE TRAIL
 CONCEPT PLAN



THE PROPOSED CONCEPT PLAN COMPLIES WITH THE
 COUNCIL APPROVED GUIDELINES FOR MANAGEMENT
 ZONES AND TRAILS IN ESAS (2016) AND AODA LEGISLATION

MAP DRAWING INFORMATION:
 DATA PROVIDED BY MNRF (2017) &
 CITY OF LONDON (2016)
 MAP CREATED BY: GM/JLK
 MAP CHECKED BY: JLP
 MAP PROJECTION: NAD 1983 UTM Zone 17N

- | | | | | |
|--------------------------------------------------------------------------------------------------------------------|--------------------------------------------------------------------------------------------------------------------------------------------------------------------------------------------------------------------------|------------------------------------------------------------------------------------------------------------------------------------------------------------------------------------------------------------------------------------|-----------------------------------------------------------------------------------------------------------------------------------------------------------------------------------------------------------------------------|-------------------------------------------------------------------------------------------------------------------------------|
| <ul style="list-style-type: none"> Trail Closed Barricade Seasonal Barrier / Access Gate | <p>Existing Trails</p> <ul style="list-style-type: none"> City Trail Outside of ESA Closed Trail¹ Informal Trail¹ Managed Trail Temporarily Closed Trail² | <p>Managed Trails</p> <ul style="list-style-type: none"> Future Connection Outside the ESA Level One Trail Level Two Trail Level Three Trail Improved Trail Surface | <ul style="list-style-type: none"> Contour (5 metre Elevation) Property Boundaries Utility Overlay (4 m) Western/Huron Properties Watercourse (also Nature Reserve) | <p>Management Zone</p> <ul style="list-style-type: none"> Nature Reserve Natural Environment |
|--------------------------------------------------------------------------------------------------------------------|--------------------------------------------------------------------------------------------------------------------------------------------------------------------------------------------------------------------------|------------------------------------------------------------------------------------------------------------------------------------------------------------------------------------------------------------------------------------|-----------------------------------------------------------------------------------------------------------------------------------------------------------------------------------------------------------------------------|-------------------------------------------------------------------------------------------------------------------------------|



¹INFORMAL AND CLOSED EXISTING TRAILS DOCUMENTED DURING PHASE I ARE TO BE CLOSED AND RESTORED (SEE RO16 ON FIGURE 2).
²TEMPORARILY CLOSED TRAIL TO BE REOPENED/ REALIGNED. SECTIONS NOT REALIGNED WILL BE CLOSED AND RESTORED



CITY OF LONDON
 CONSERVATION MASTER PLAN
 MEDWAY VALLEY HERITAGE FOREST ESA (SOUTH)

FIGURE 4a
 ENVIRONMENTAL MANAGEMENT STRATEGY:
 PROPOSED SUSTAINABLE
 TRAIL CONCEPT PLAN

Seasonal Barrier / Access Gate
 Contour (5 metre Elevation)

Existing Trails
 City Trail Outside of ESA
 Informal Trail¹
 Managed Trail

Managed Trails
 Future Connection Outside the ESA
 Level One Trail
 Level Two Trail
 Level Three Trail
 Improved Trail Surface

Butternut
 False Rue Anemone

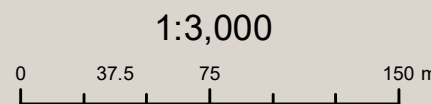
Amphibian Breeding Habitat
 Habitat for Rare Species (American Gromwell)
 Habitat for Rare Species (Cream Violet)
 Habitat for Rare Species (Shrubby St. John's Wort)
 Habitat for Special Concern Species (Green Dragon)
 Seeps and Springs Area

Management Zone
 Nature Reserve
 Natural Environment
 Utility Overlay (4 m)
 Watercourse (also Nature Reserve)



MAP DRAWING INFORMATION:
 DATA PROVIDED BY MNRF (2017) &
 CITY OF LONDON (2016)

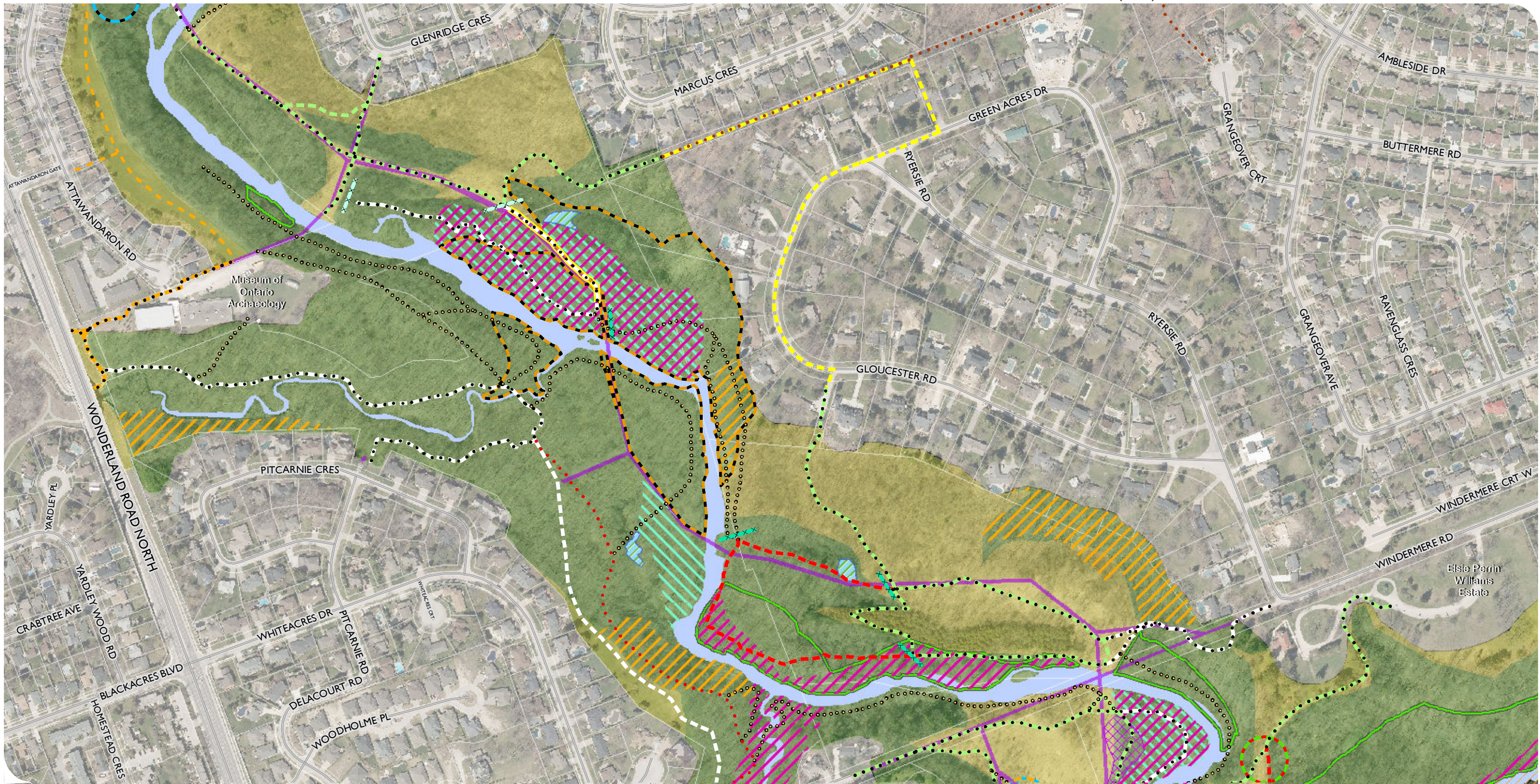
MAP CREATED BY: GMLK
 MAP CHECKED BY: JLP
 MAP PROJECTION: NAD 1983 UTM Zone 17N



¹INFORMAL AND CLOSED EXISTING TRAILS DOCUMENTED DURING PHASE I ARE TO BE CLOSED AND RESTORED (SEE R016 ON FIGURE 2).
²TEMPORARILY CLOSED TRAIL TO BE REOPENED/ REALIGNED. SECTIONS NOT REALIGNED WILL BE CLOSED AND RESTORED

PROJECT: 17-5428 STATUS: DRAFT DATE: 2021-03-19





CITY OF LONDON
 CONSERVATION MASTER PLAN
 MEDWAY VALLEY HERITAGE FOREST ESA (SOUTH)

FIGURE 4b
 ENVIRONMENTAL MANAGEMENT STRATEGY:
 PROPOSED SUSTAINABLE
 TRAIL CONCEPT PLAN

- Western/Huron Properties
- Trail Closed Barricade
- Seasonal Barrier / Access Gate
- Contour (5 metre Elevation)

Existing Trails

- City Trail Outside of ESA
- Closed Trail¹
- Informal Trail¹
- Managed Trail
- Temporarily Closed Trail²

Managed Trails

- Future Connection Outside the ESA
- Level One Trail
- Level Two Trail
- Level Three Trail
- Improved Trail Surface

- Butternut
- Cucumber Magnolia
- False Rue Anemone
- Kentucky Coffee-tree

- Amphibian Breeding Habitat
- Habitat for Rare Species (American Gromwell)
- Habitat for Rare Species (Cream Violet)
- Habitat for Rare Species (Slender Satin Grass)
- Habitat for Special Concern Species (Green Dragon)
- Seeps and Springs Area

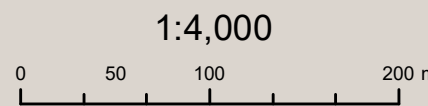
Management Zone

- Nature Reserve
- Natural Environment
- Utility Overlay (4 m)
- Watercourse (also Nature Reserve)



MAP DRAWING INFORMATION:
 DATA PROVIDED BY MNRF (2017) &
 CITY OF LONDON (2016)

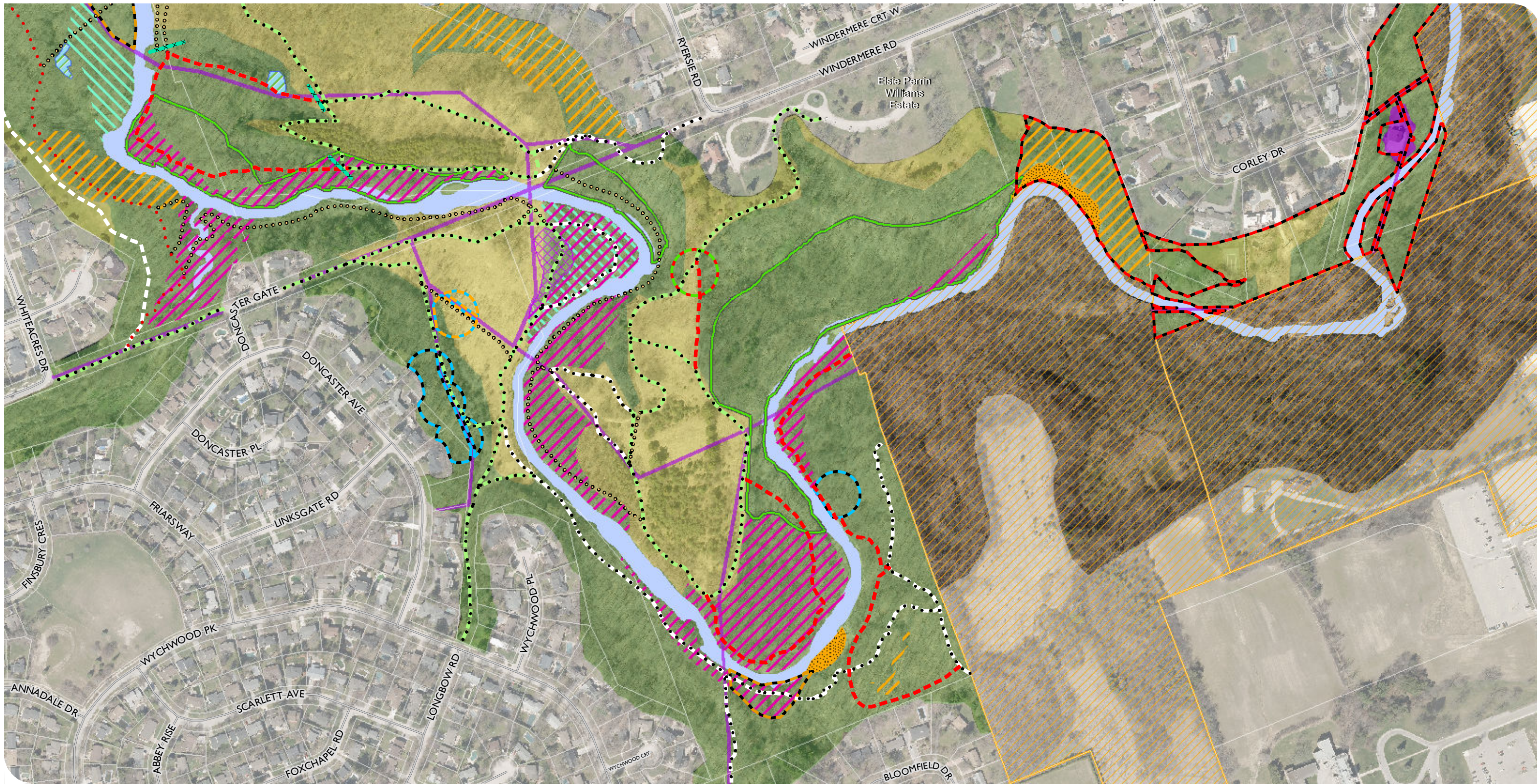
MAP CREATED BY: GMLK
 MAP CHECKED BY: JLP
 MAP PROJECTION: NAD 1983 UTM Zone 17N



¹INFORMAL AND CLOSED EXISTING TRAILS DOCUMENTED DURING PHASE I ARE TO BE CLOSED AND RESTORED (SEE R016 ON FIGURE 2).
²TEMPORARILY CLOSED TRAIL TO BE REOPENED/ REALIGNED. SECTIONS NOT REALIGNED WILL BE CLOSED AND RESTORED

PROJECT: 17-5428 STATUS: DRAFT DATE: 2021-03-19





CITY OF LONDON
 CONSERVATION MASTER PLAN
 MEDWAY VALLEY HERITAGE FOREST ESA (SOUTH)

FIGURE 4c
 ENVIRONMENTAL MANAGEMENT STRATEGY:
 PROPOSED SUSTAINABLE
 TRAIL CONCEPT PLAN

- Western/Huron Properties
- Trail Closed Barricade
- Contour (5 metre Elevation)

- Existing Trails**
- Closed Trail¹
 - Informal Trail¹
 - Managed Trail
 - Temporarily Closed Trail²

- Managed Trails**
- Level One Trail
 - Level Two Trail

- Butternut
- Cucumber Magnolia
- False Rue Anemone
- Kentucky Coffee-tree
- Queensnake

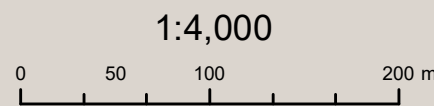
- Amphibian Breeding Habitat
- Colonially-Nesting Bird Breeding Habitat (Bank and Cliff)
- Habitat for Rare Species (American Gromwell)
- Habitat for Rare Species (Cream Violet)
- Habitat for Rare Species (Slender Satin Grass)
- Habitat for Special Concern Species (Green Dragon)
- Seeps and Springs Area

- Management Zone**
- Nature Reserve
 - Natural Environment
 - Utility Overlay (4 m)
 - Watercourse (also Nature Reserve)



MAP DRAWING INFORMATION:
 DATA PROVIDED BY MNRF (2017) &
 CITY OF LONDON (2016)

MAP CREATED BY: GMLK
 MAP CHECKED BY: JLP
 MAP PROJECTION: NAD 1983 UTM Zone 17N



¹INFORMAL AND CLOSED EXISTING TRAILS DOCUMENTED DURING PHASE I ARE TO BE CLOSED AND RESTORED (SEE R016 ON FIGURE 2).
²TEMPORARILY CLOSED TRAIL TO BE REOPENED/ REALIGNED. SECTIONS NOT REALIGNED WILL BE CLOSED AND RESTORED

PROJECT: 17-5428 STATUS: DRAFT DATE: 2021-03-19

