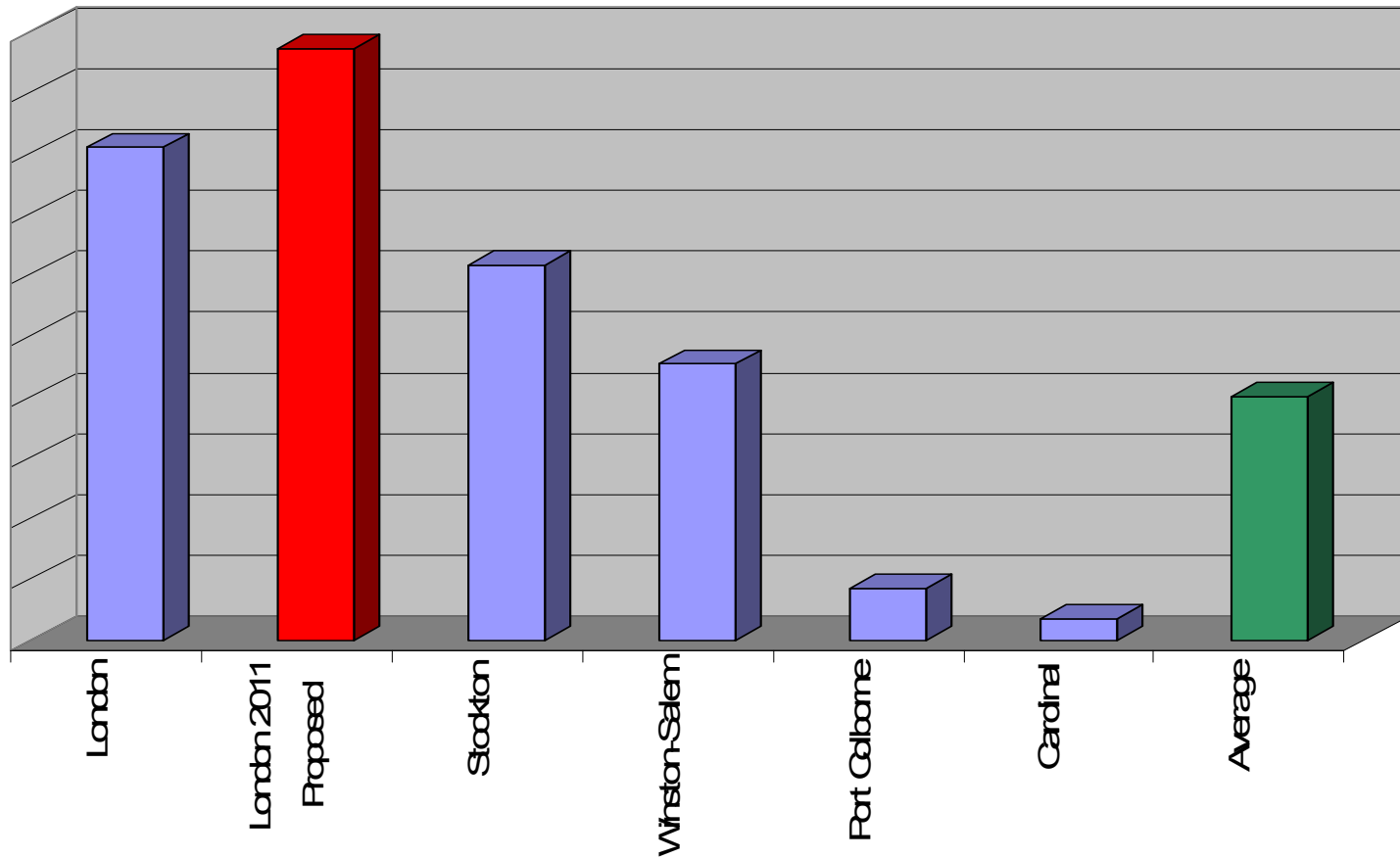


Casco London Water and Waste Water



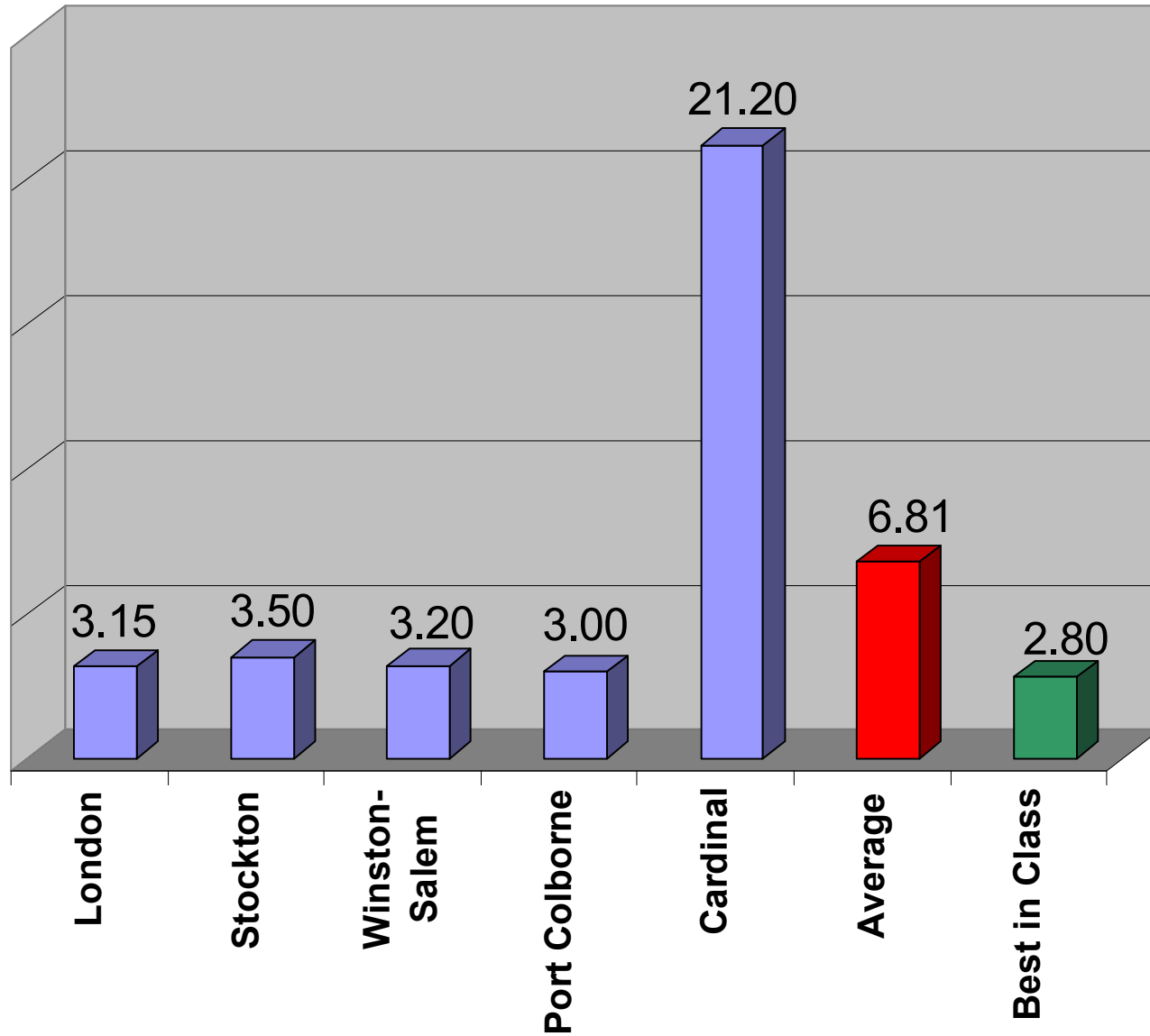
Corn Products - US/Canada Region

Regional Plant unit water costs

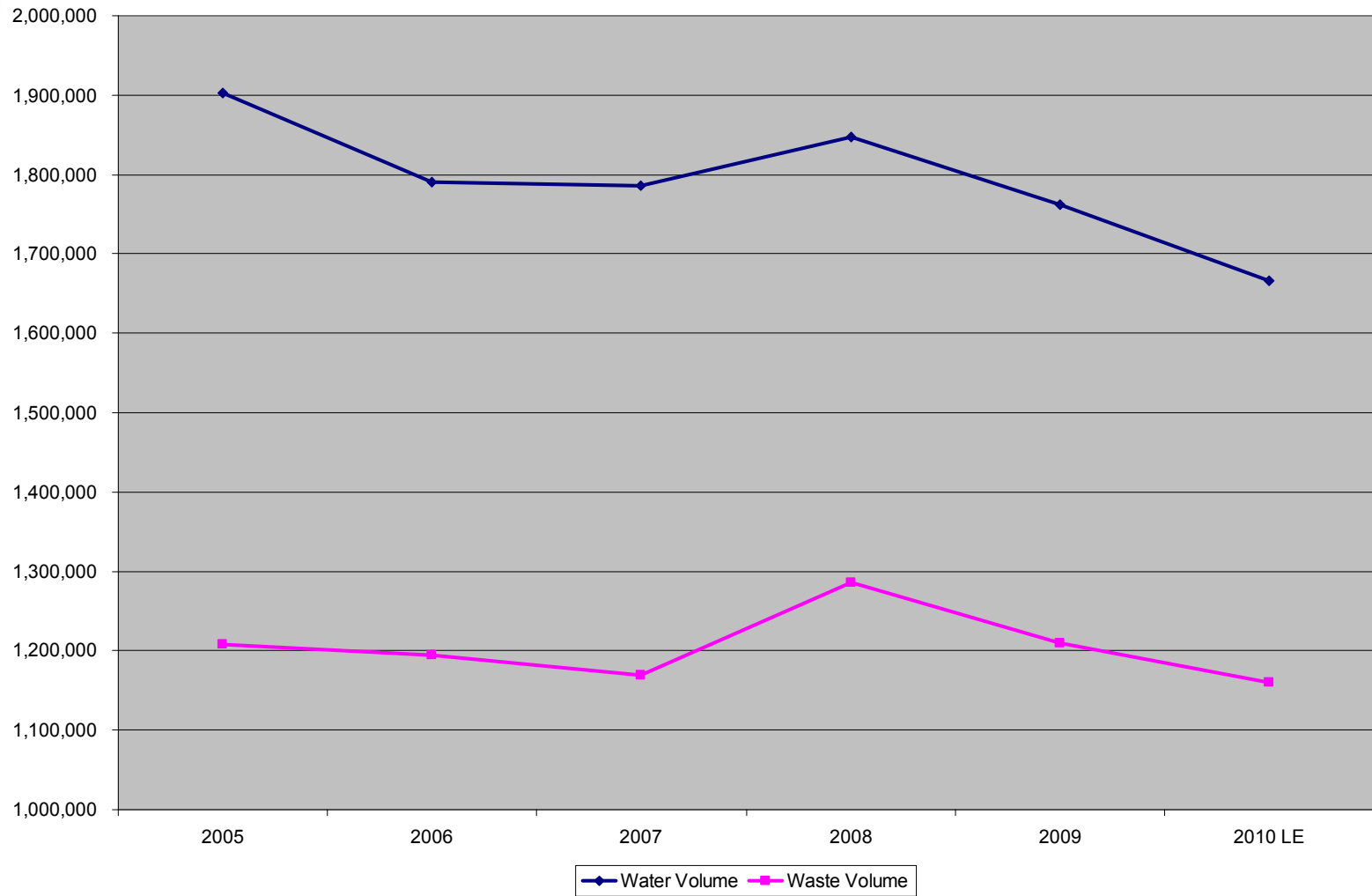


Corn Products - US/Canada Region

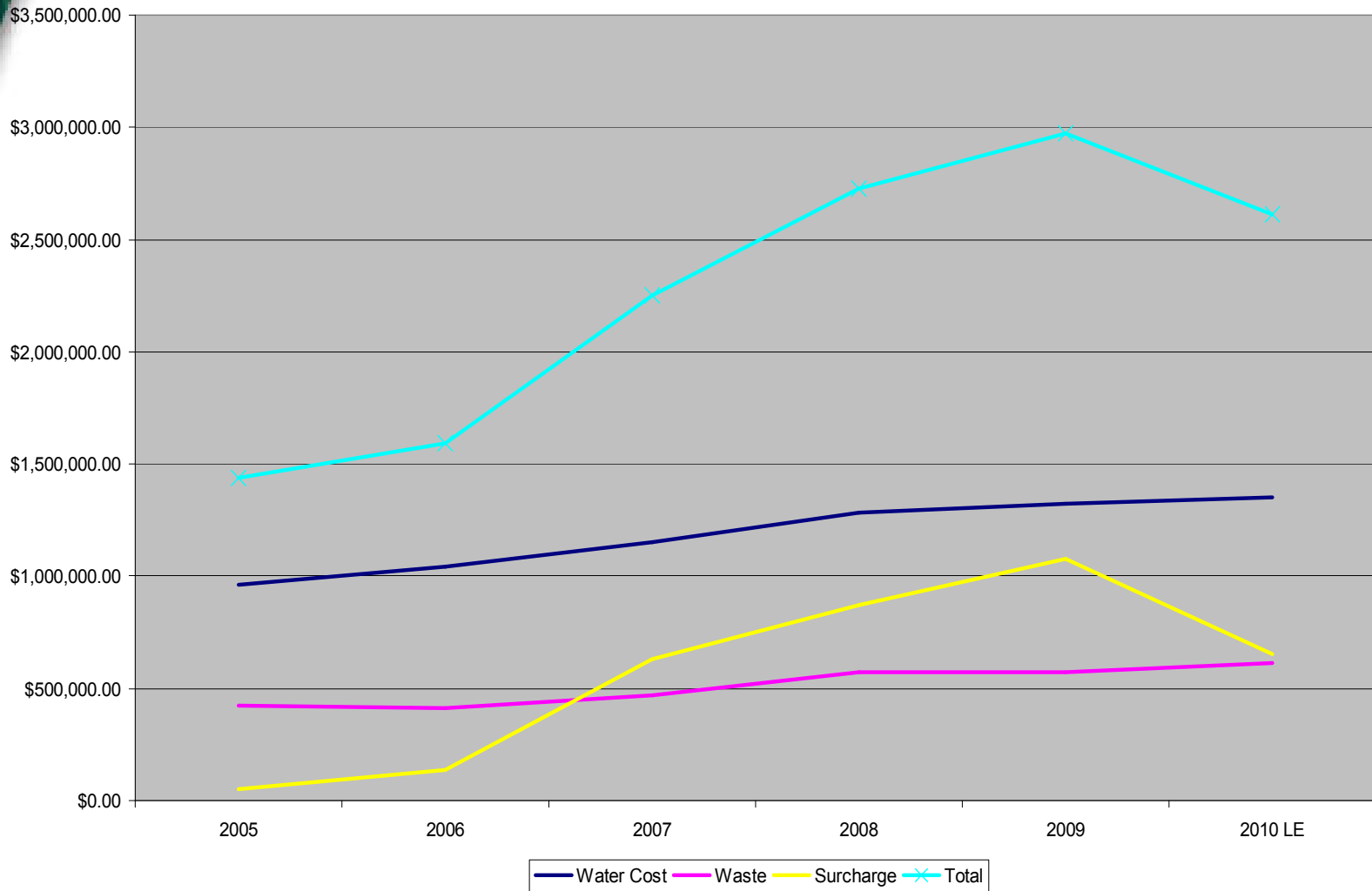
Regional Plant unit water consumption



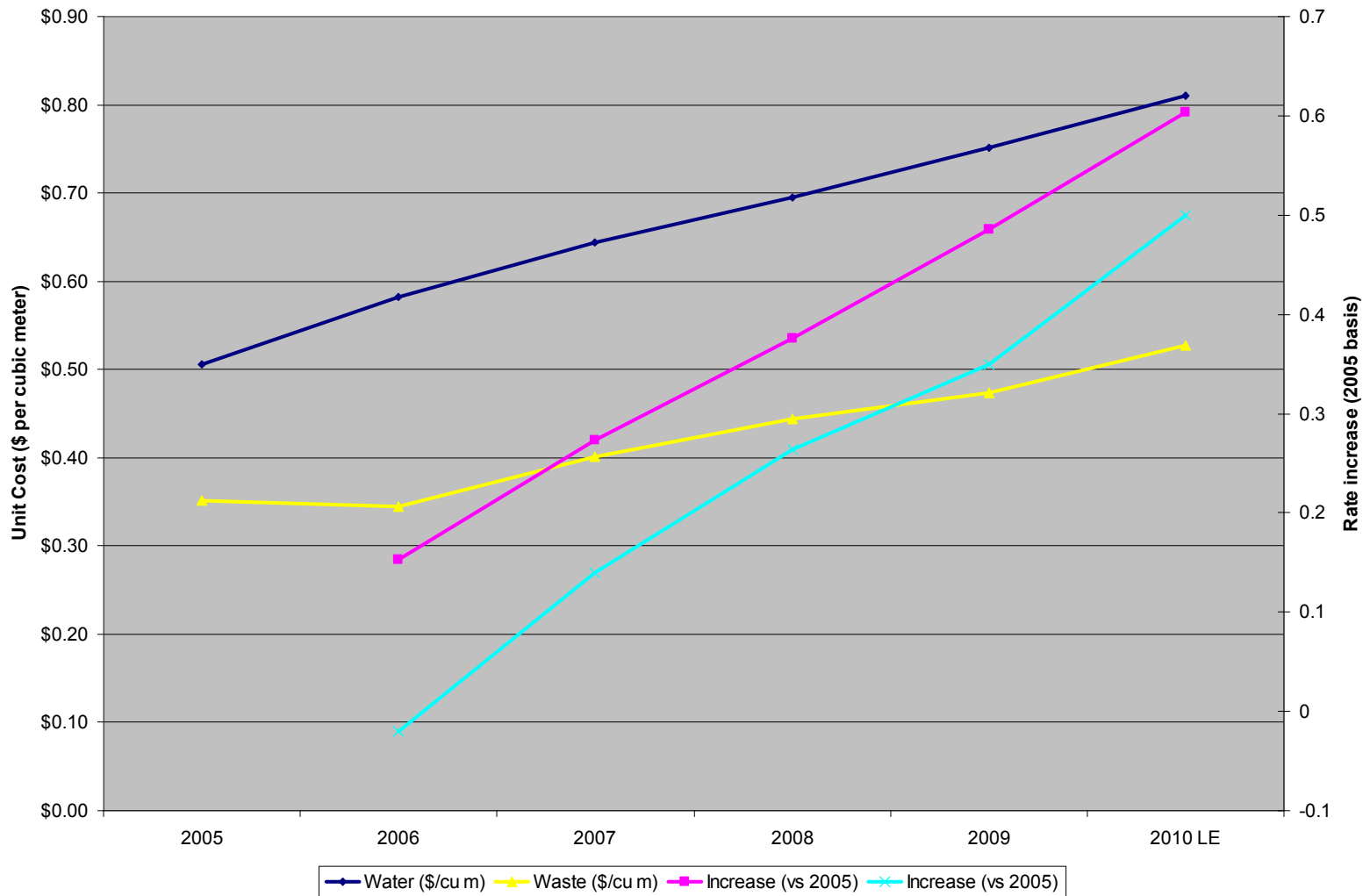
Water and Waste Water Volumes 2005 – 2010 LE



Water and Waste Total Spend 2005 – 2010 LE



Water & Waste - Unit Costs & Escalation 2005 – 2010



Casco London

Position Summary

- Combined water and sanitary sewer rate changes
 - 2010 vs 2005 – 82% increase in spending on 9% lower aggregate volume
 - 2009 vs 2005 net of strength surcharges (phosphorous) – 32% increase on 4.5% lower aggregate volume
- City of London chose to begin billing for Phosphorous in 2007 (in accordance with existing bylaws) which added significant incremental costs to Casco
 - Phosphorous comes in as part of the corn and reports to sludge in our pre-treatment system.
 - Phosphorous could be removed based on trial work here with clarification and sludge dewatering (~\$2.5MM capital cost)
- Average unit potable water costs for sister operations in US/Canada are 50% of London's current rate with closest being California – still 23% lower than London's 2007 rate
- Incremental costs already realized for Casco represent 10FTE
- Parent corporation expects us to deliver 2-3% savings/year. All increases in costs realized are expected to be offset with savings in other areas
- Contradicts the City's strategic decision attract and retain businesses in the Agrifood / Agribusiness sector by incrementally reducing attractiveness and competitiveness