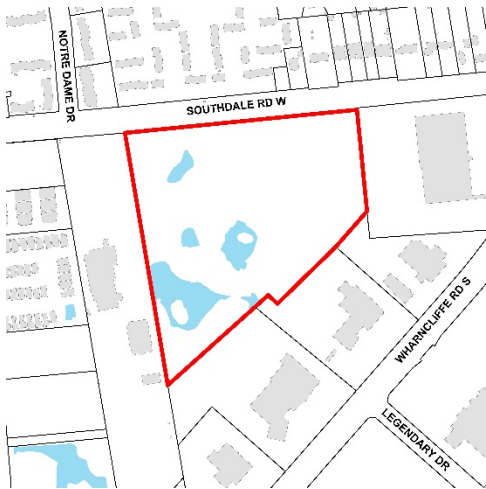


# NOTICE OF PLANNING APPLICATION

## Zoning By-Law Amendment

### 99 Southdale Road West



**File: Z-9162**

**Applicant: Southdale West Holdings Inc.**

#### What is Proposed?

Zoning amendment to allow:

- Two 4-storey, 134 unit apartment buildings,
- Two 8-storey, 286 unit apartment buildings,
- Two 9-storey, 331 unit apartment buildings, and associated underground parking structures and surface parking areas
- The proposed development will contain a total of 751 units for a density of 110 units per hectare

## LEARN MORE & PROVIDE INPUT

Please provide any comments by **February 7, 2020**

Sean Meksula

[smeksula@london.ca](mailto:smeksula@london.ca)

519-661-CITY (2489) ext. 5349

Development Services, City of London, 300 Dufferin Avenue, 6<sup>th</sup> Floor,  
London ON PO BOX 5035 N6A 4L9

File: Z-9162

[london.ca/planapps](https://london.ca/planapps)

You may also discuss any concerns you have with your Ward Councillor:

Paul Van Meerbergen

[pvanmeerbergen@london.ca](mailto:pvanmeerbergen@london.ca)

519-661-CITY (2489) ext. 4010

**If you are a landlord, please post a copy of this notice where your tenants can see it.  
We want to make sure they have a chance to take part.**

# Application Details

Commonly Used Planning Terms are available at [london.ca/planapps](http://london.ca/planapps).

## Requested Zoning By-law Amendment

To change the zoning from an Urban Reserve (UR4) and Environmental Review (ER) Zone to a Residential R9 Special Provision Bonus (R9-5(\_\_)\*B-\_\_) and Open Space (OS4) Zone to permit apartment buildings with a maximum density of 110 units per hectare. Changes to the currently permitted land uses and development regulations are summarized below. The complete Zoning By-law is available at [london.ca/planapps](http://london.ca/planapps).

### Current Zoning

**Zone:** Urban Reserve (UR4) and Environmental Review (ER)

**Permitted Uses:** Within the UR4 Zone: existing dwellings, agricultural uses except for mushroom farms, commercial greenhouses livestock facilities and manure storage facilities, conservation lands, managed woodlot, wayside pit, passive recreation use, kennels, private outdoor recreation clubs, riding stables. Within the ER Zone: conservation lands conservation works, passive recreational uses, manage woodlot and agricultural uses.

**Height:** UR4 - 15m

### Requested Zoning

**Zone:** Residential R8 Bonus Zone (R9-5(\_\_)\*B-\_\_)

**Permitted Uses:** apartment buildings, lodging house class 2, senior citizen apartment buildings, handicapped persons apartment buildings, and continuum-of-care facilities

**Special Provision(s):** a minimum front yard setback of 6.0m along an Southdale Road West, a minimum rear yard setback of 6.0m, a minimum east interior side yard setback of 12.0m, a minimum west interior side yard setback of 6.5m and a maximum height of 30.9m.

**Residential Density:** 110 units per hectare (751)

**Height:** 30.9m (9 storeys)

**Bonus Zone:** Allow apartment buildings with a maximum density of 110 units per hectare (751 units) in return for building design, site design, underground parking and open space lands that will be dedicated to the City beyond the prescribed parkland dedication amount to the benefit of the surrounding neighbourhoods.

The City may also consider holding provisions.

## Planning Policies

Any change to the Zoning By-law must conform to the policies of the Official Plan, London's long-range planning document. These lands are currently designated as Multi-family, Medium Density Residential and Open Space in the 1989 Official Plan. The Multi-family, Medium Density Residential designation permits multiple-attached dwellings, low rise apartment buildings, rooming and boarding houses, emergency care facilities, converted dwellings, and small-scale nursing homes, rest homes and homes for the aged as the main uses. Normally height limitations will not exceed four storeys and density will generally not exceed 75 units per hectare, with provision for up to 100 units per hectare with bonusing. The Open Space designation permits agriculture; woodlot management; horticulture; conservation; essential public utilities and municipal services; and recreational and community facilities; may also be permitted. Zoning on individual sites may not allow for the full range of permitted uses

The subject lands are in the Neighbourhoods and Green Space Place Types in The London Plan. The Neighbourhoods Place Type permits a range of housing types including low-rise apartments with a maximum height of 4 storeys with the potential for up to 6 storeys with Type 2 bonusing. Permitted uses in the Green Space Place Type include agriculture, woodlot management, horticulture, conservation, and recreational uses

## How Can You Participate in the Planning Process?

You have received this Notice because someone has applied to change the zoning of land located within 120 metres of a property you own, or your landlord has posted the notice of application in your building. The City reviews and makes decisions on such planning applications in accordance with the requirements of the *Planning Act*. The ways you can participate in the City's planning review and decision making process are summarized below. For more detailed information about the public process, go to the [Participating in the Planning Process](http://london.ca/planapps) page at [london.ca](http://london.ca).

### See More Information

You can review additional information and material about this application by:

- visiting Development Services at 300 Dufferin Ave, 6<sup>th</sup> floor, Monday to Friday between

8:30am and 4:30pm;

- contacting the City's Planner listed on the first page of this Notice; or
- viewing the application-specific page at [london.ca/planapps](http://london.ca/planapps).

## Reply to this Notice of Application

We are inviting your comments on the requested changes at this time so that we can consider them as we review the application and prepare a report that will include Development Services staff's recommendation to the City's Planning and Environment Committee. Planning considerations usually include such matters as land use, development intensity, and form of development.

This request represents residential intensification as defined in the policies of the Official Plan. Under these policies, Development Services staff and the Planning and Environment Committee will also consider detailed site plan matters such as fencing, landscaping, lighting, driveway locations, building scale and design, and the location of the proposed building on the site. We would like to hear your comments on these matters.

## Attend a Future Public Participation Meeting

The Planning and Environment Committee will consider the requested zoning changes on a date that has not yet been scheduled. The City will send you another notice inviting you to attend this meeting, which is required by the *Planning Act*. You will also be invited to provide your comments at this public participation meeting. The Planning and Environment Committee will make a recommendation to Council, which will make its decision at a future Council meeting.

## What Are Your Legal Rights?

### Notification of Council Decision

If you wish to be notified of the decision of the City of London on the proposed zoning by-law amendment, you must make a written request to the City Clerk, 300 Dufferin Ave., P.O. Box 5035, London, ON, N6A 4L9, or at [docservices@london.ca](mailto:docservices@london.ca). You will also be notified if you speak to the Planning and Environment Committee at the public meeting about this application and leave your name and address with the Secretary of the Committee.

### Right to Appeal to the Local Planning Appeal Tribunal

If a person or public body would otherwise have an ability to appeal the decision of the Council of the Corporation of the City of London to the Local Planning Appeal Tribunal but the person or public body does not make oral submissions at a public meeting or make written submissions to the City of London before the by-law is passed, the person or public body is not entitled to appeal the decision.

If a person or public body does not make oral submissions at a public meeting or make written submissions to the City of London before the by-law is passed, the person or public body may not be added as a party to the hearing of an appeal before the Local Planning Appeal Tribunal unless, in the opinion of the Tribunal, there are reasonable grounds to do so.

For more information go to <http://elto.gov.on.ca/tribunals/lpat/about-lpat/>.

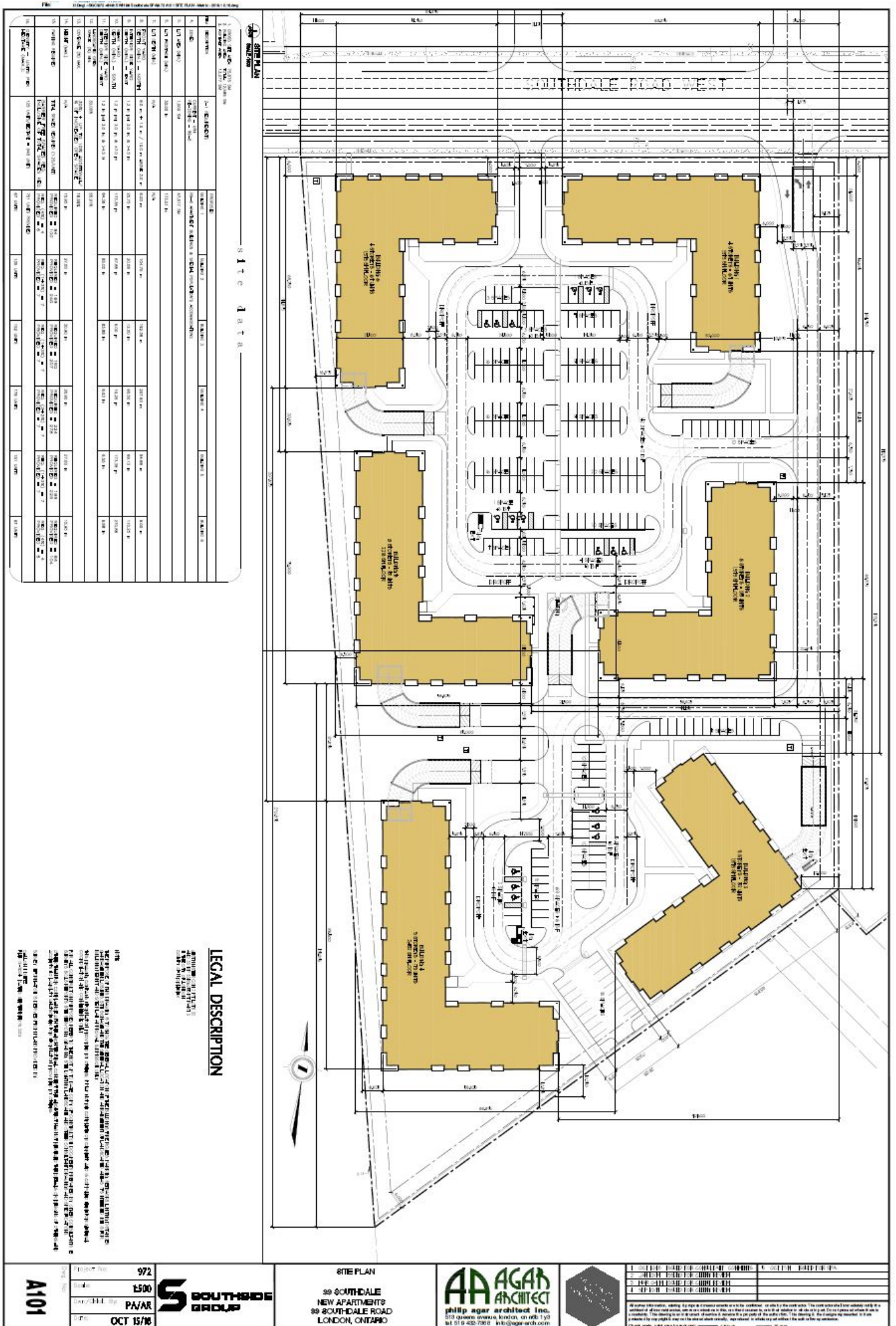
### Notice of Collection of Personal Information

Personal information collected and recorded at the Public Participation Meeting, or through written submissions on this subject, is collected under the authority of the *Municipal Act*, 2001, as amended, and the *Planning Act*, 1990 R.S.O. 1990, c.P.13 and will be used by Members of Council and City of London staff in their consideration of this matter. The written submissions, including names and contact information and the associated reports arising from the public participation process, will be made available to the public, including publishing on the City's website. Video recordings of the Public Participation Meeting may also be posted to the City of London's website. Questions about this collection should be referred to Cathy Saunders, City Clerk, 519-661-CITY(2489) ext. 4937.

**Accessibility – Alternative accessible formats or communication supports are available upon request. Please contact [accessibility@london.ca](mailto:accessibility@london.ca) or 519-661-CITY(2489) extension 2425 for more information.**



# Site Concept



The above image represents the applicant's proposal as submitted and may change.



# Building Renderings



*View from Southdale Road West, buildings 4, 5 & 6*



*Aerial View*

The above images represent the applicant's proposal as submitted and may change.