

Bill No. 12
2021

By-law No. S.-____-____

A by-law to lay out, constitute, establish and assume certain reserves in the City of London as public highway. (as widening to Clarence Street, north of King Street)

WHEREAS it is expedient to establish the lands hereinafter described as public highway;

NOW THEREFORE the Municipal Council of The Corporation of the City of London enacts as follows:

1. The lands and premises hereinafter described are laid out, constituted, established and assumed as public highway as widening to Clarence Street, north of King Street:

“Part of Lot 6, North of King Street West, in the City of London and County of Middlesex, designated as Part 1 on Reference Plan 33R-20332.”

2. This by-law comes into force and effect on the day it is passed.

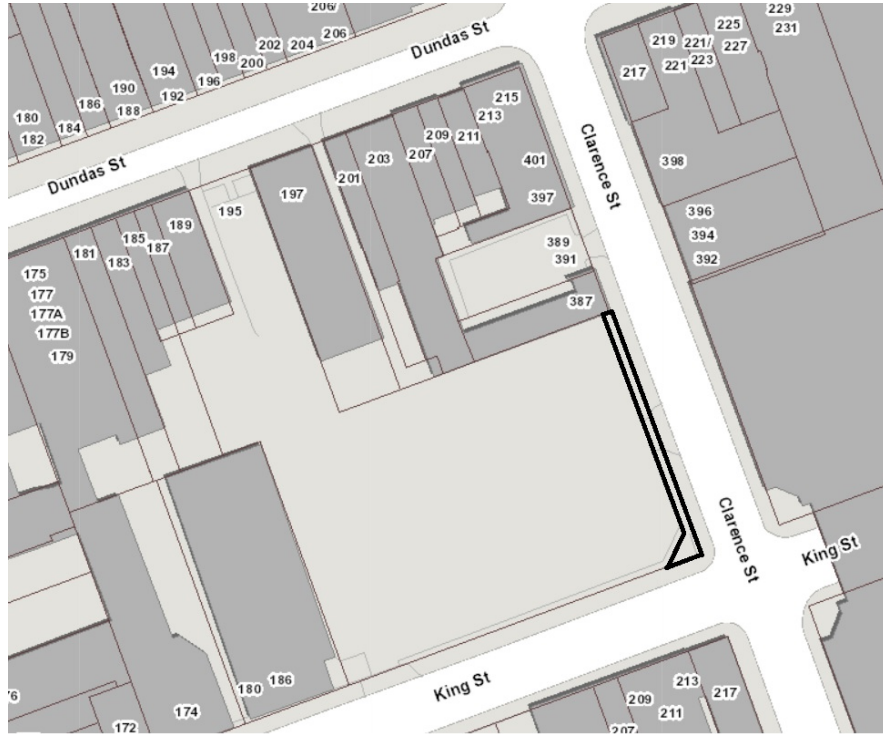
PASSED in Open Council on December 8, 2020.

Ed Holder
Mayor

Catharine Saunders
City Clerk

First Reading – December 8, 2020
Second Reading – December 8, 2020
Third Reading – December 8, 2020

LOCATION MAP



 SUBJECT LANDS