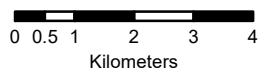
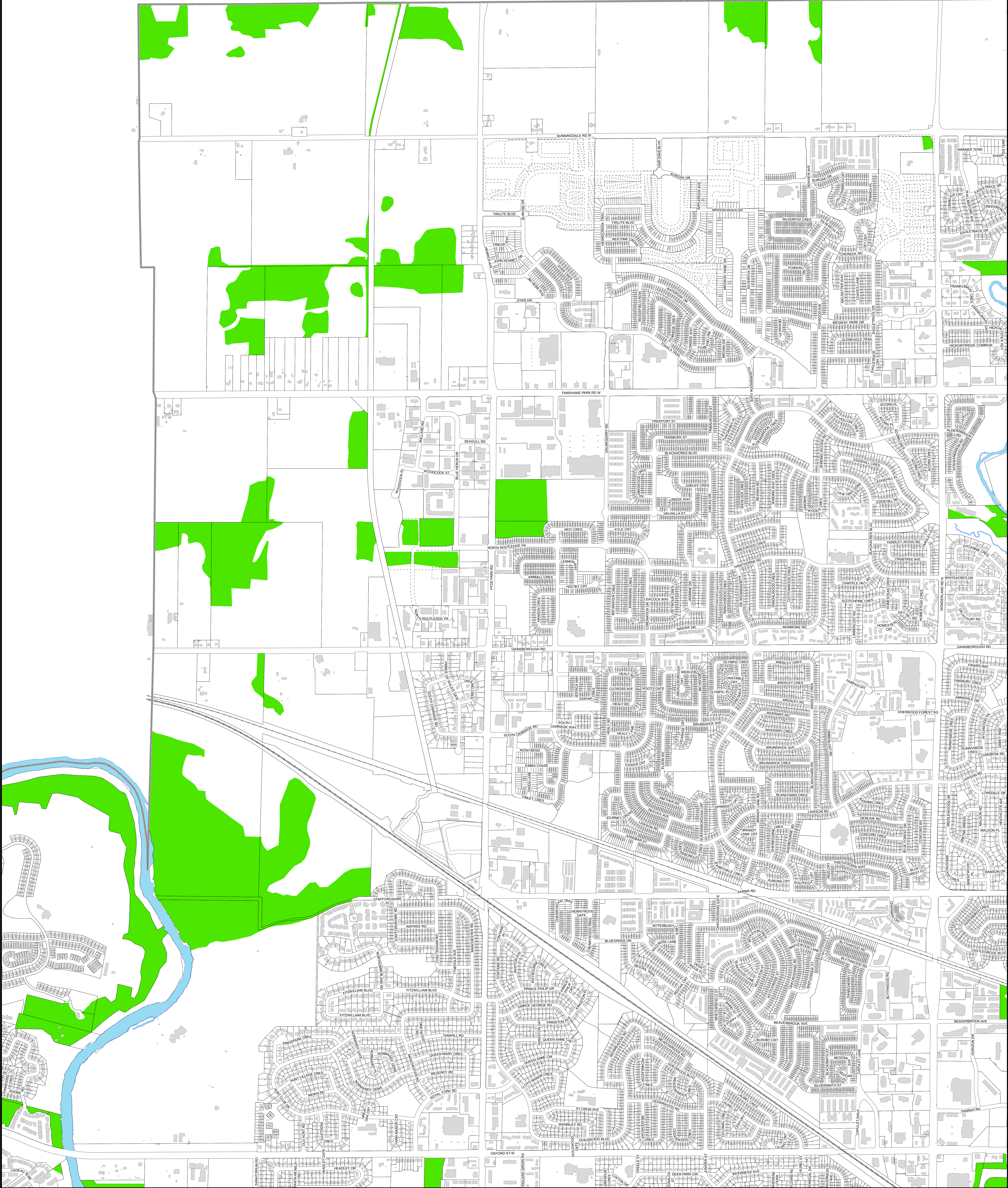


**CITY OF LONDON  
TREE PROTECTION BY-LAW  
SCHEDULE B  
INDEX MAP**

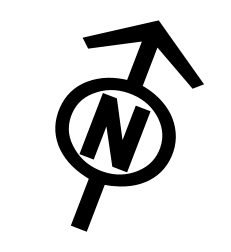




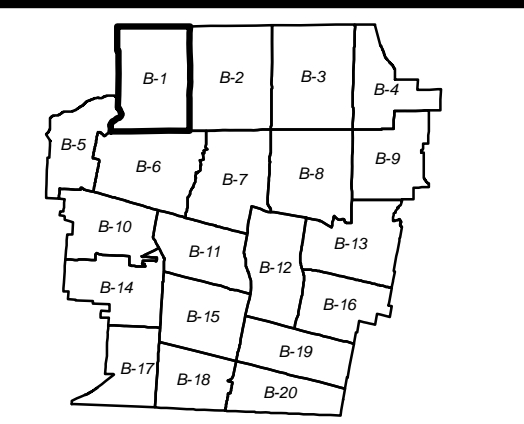


 Tree Protection Area

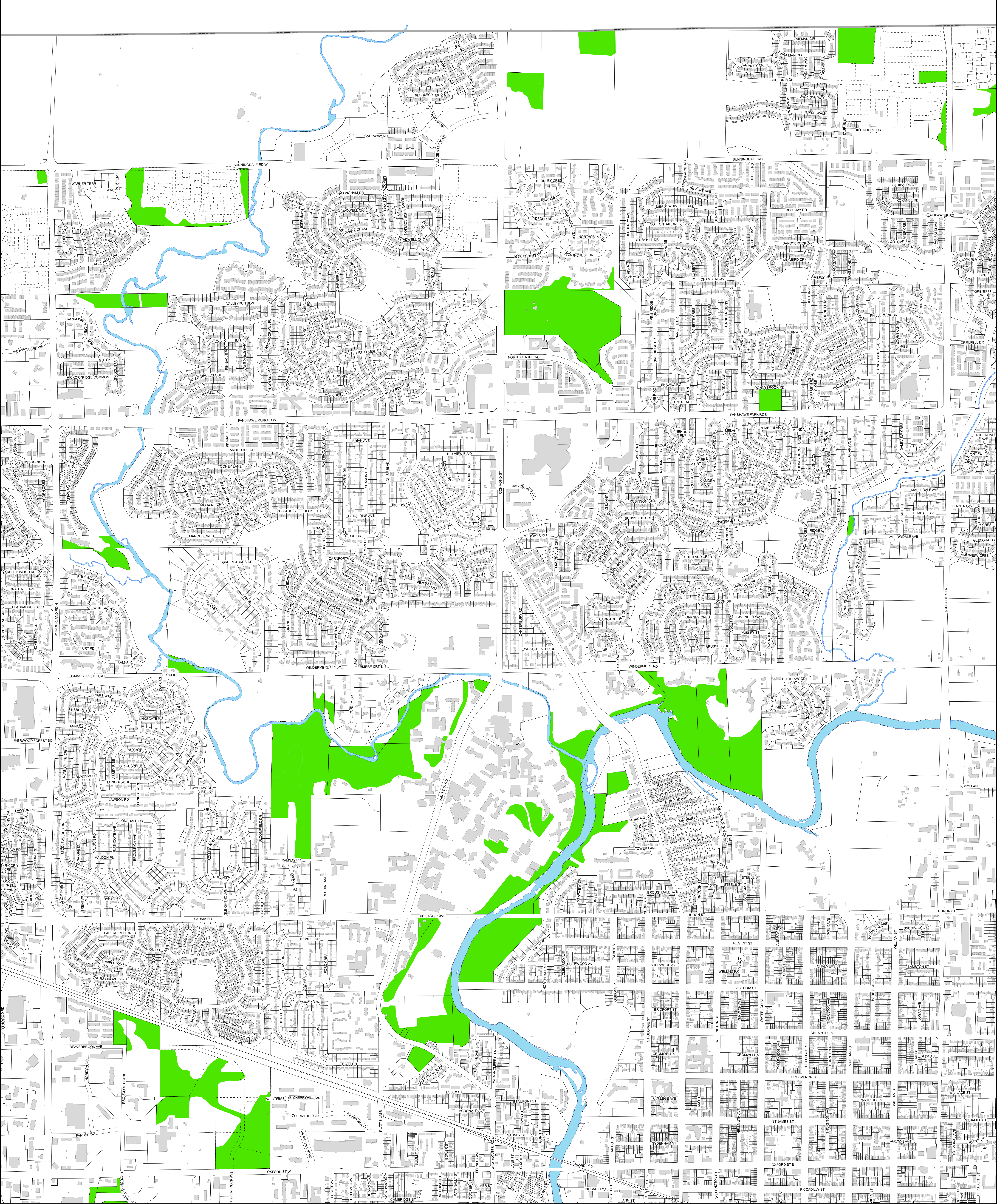
**KEY MAP**  
**B-1**  
 1:6,500  
 0 100 200 400  
 Meters



DISCLAIMER:  
 The City of London Tree Protection By-Law Maps and related information are made available for information only. The City of London does not warrant that this information is the most current version or that there are no errors or omissions contained herein. The City of London accepts no responsibility for damages, if any, suffered by any person as a result of decisions made or actions based on this information and any person undertaking work based on this information assumes all risk in connection therewith and any damages done or occasioned shall be at the sole risk and expense of that person. Any person undertaking work based on this information should verify it with the City's Planning Services before acting on it. No permission is given for distribution of the Tree Protection By-Law maps or related information for commercial purposes. This information may be used for other purposes only if the user of this information repeats this disclaimer and the notice of copyright.



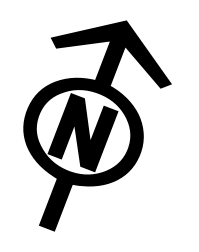
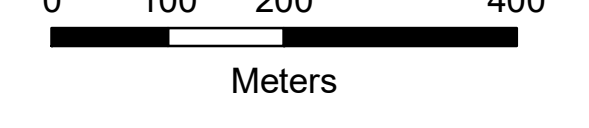




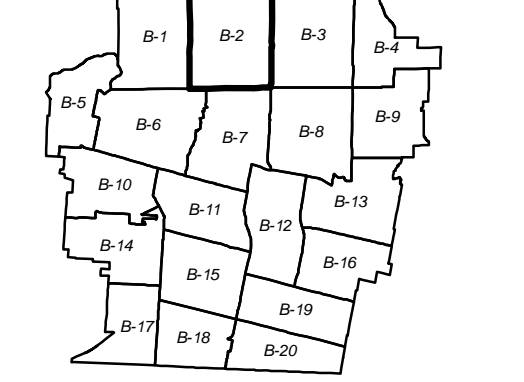
 Tree Protection Area

**KEY MAP**  
**B-2**

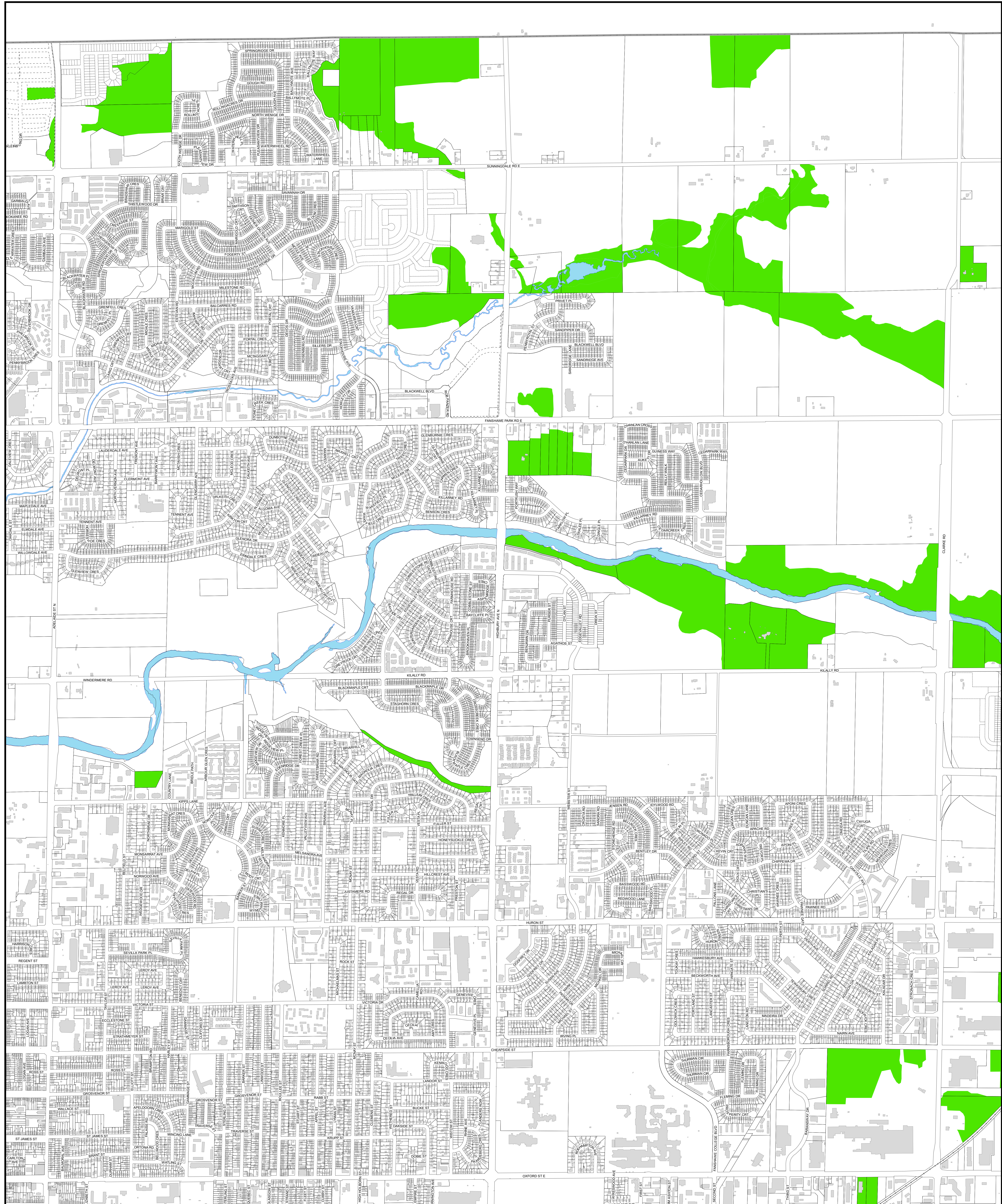
1:6,500



DISCLAIMER:  
 The City of London Tree Protection By-Law Maps and related information are made available for information only. The City of London does not warrant that this information is the most current version or that there are no errors or omissions contained herein. The City of London accepts no responsibility for damages, if any, suffered by any person as a result of decisions made or actions based on this information and any person undertaking work based on this information assumes all risk in connection therewith and any damages done or occasioned shall be at the sole risk and expense of that person. Any person undertaking work based on this information should verify it with the City's Planning Services before acting on it. No permission is given for the distribution of the Tree Protection By-Law maps or related information for commercial purposes. This information may be used for other purposes only if the user of this information repeats this disclaimer and the notice of copyright.

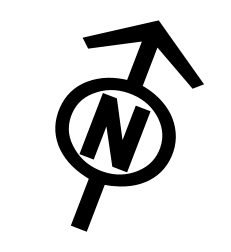




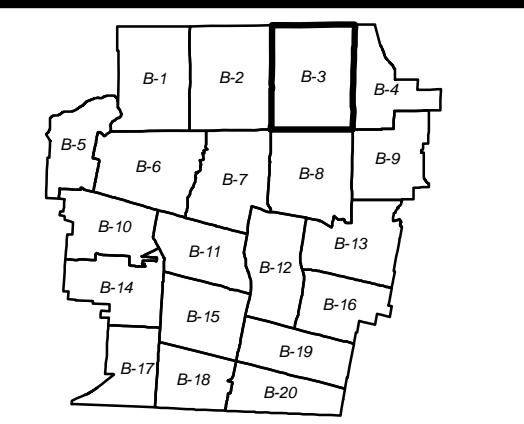


 Tree Protection Area

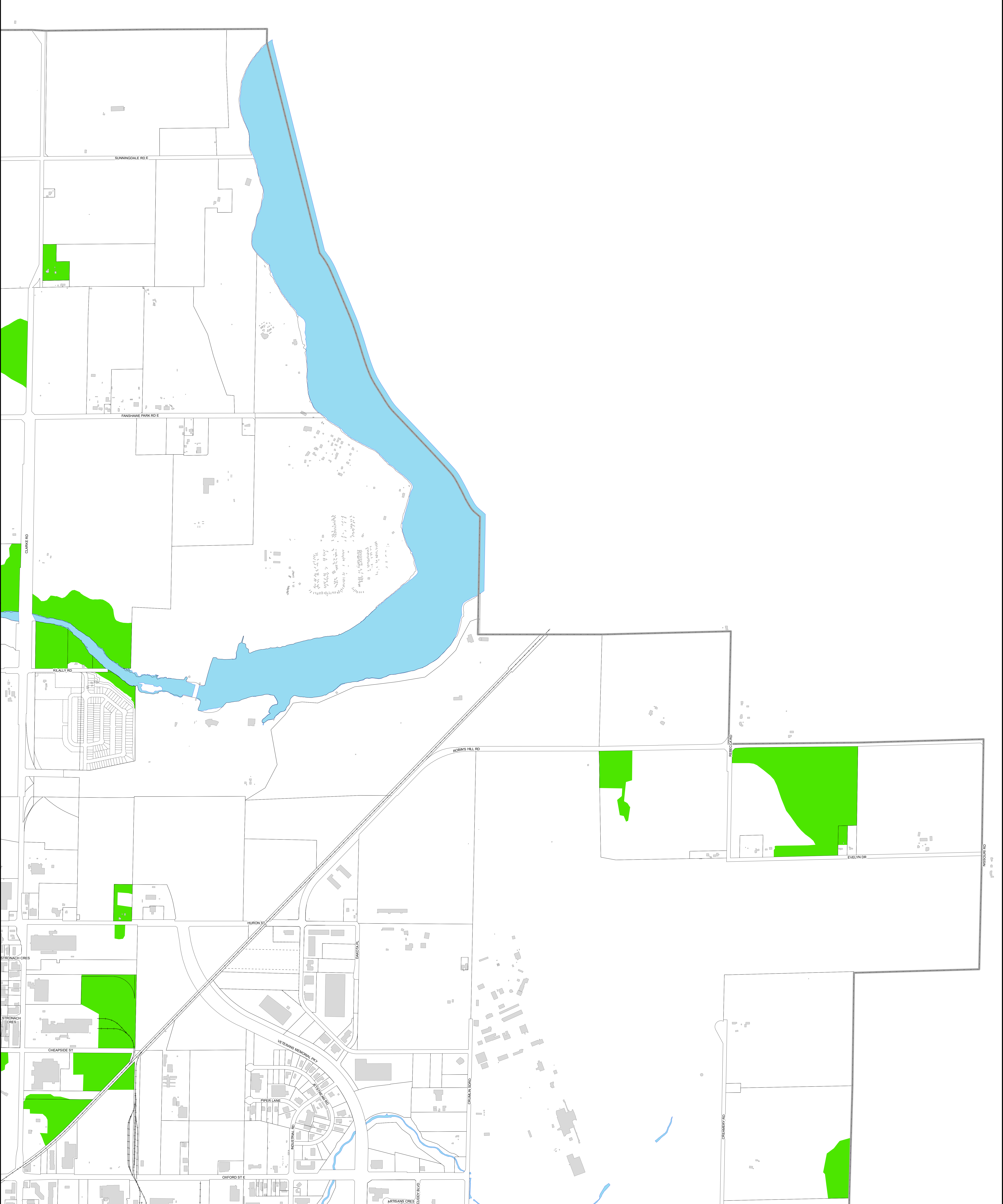
**KEY MAP**  
**B-3**  
 1:6,500  
 0 100 200 400  
 Meters



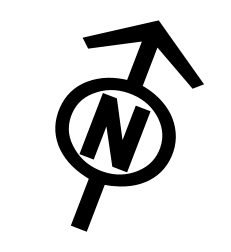
DISCLAIMER:  
 The City of London Tree Protection By-Law Maps and related information are made available for information only. The City of London does not warrant that this information is the most current version or that there are no errors or omissions contained herein. The City of London accepts no responsibility for damages, if any, suffered by any person as a result of decisions made or actions based on this information and any person undertaking work based on this information assumes all risk in connection therewith and any damages done or occasioned shall be at the sole risk and expense of that person. Any person undertaking work based on this information should verify it with the City's Planning Services before acting on it. No permission is given for distribution of the Tree Protection By-Law maps or related information for commercial purposes. This information may be used for other purposes only if the user of this information repeats this disclaimer and the notice of copyright.



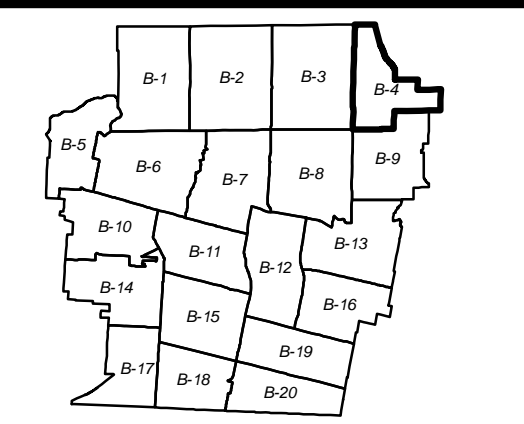




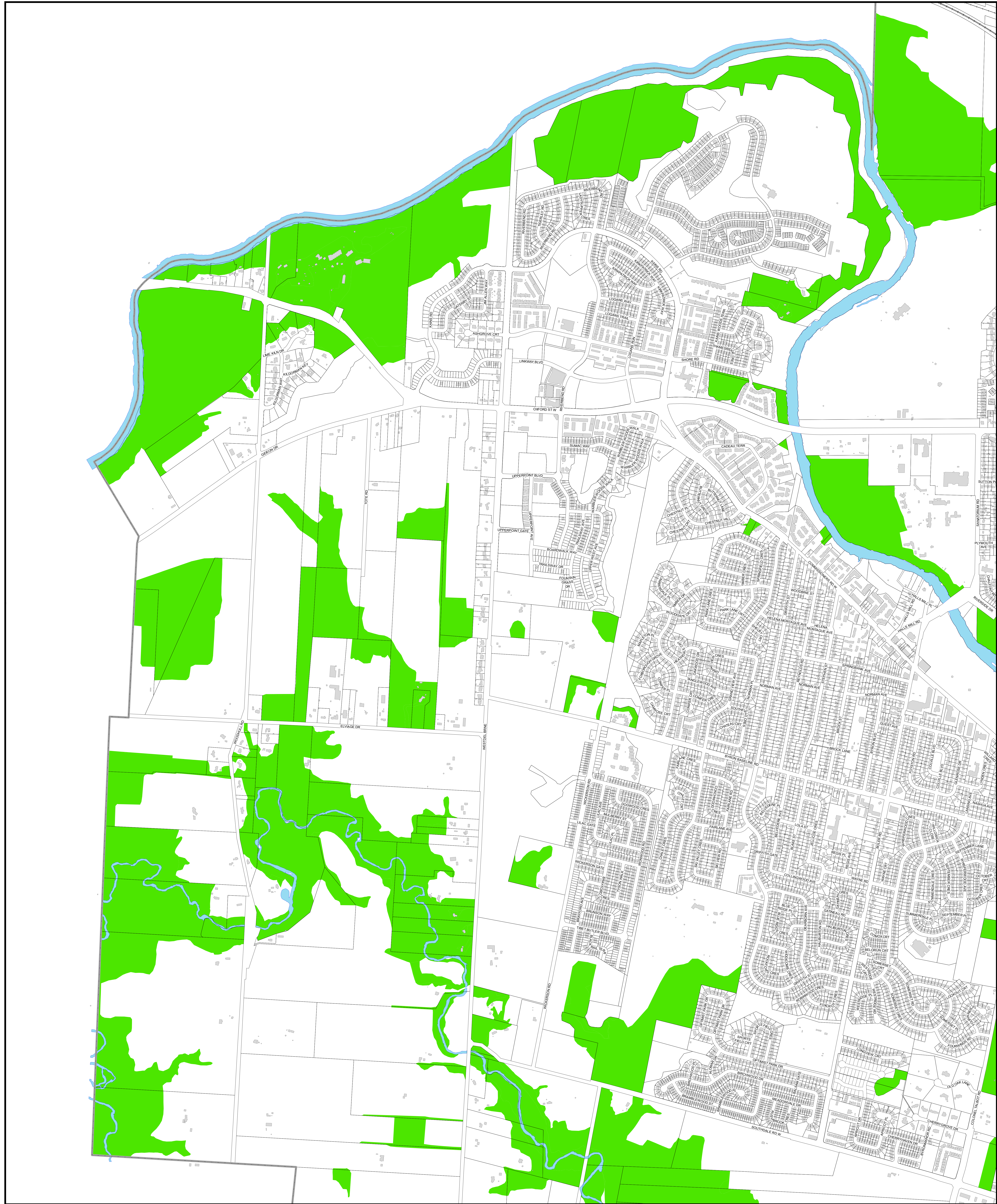
 Tree Protection Area



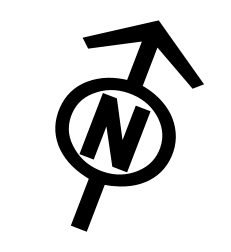
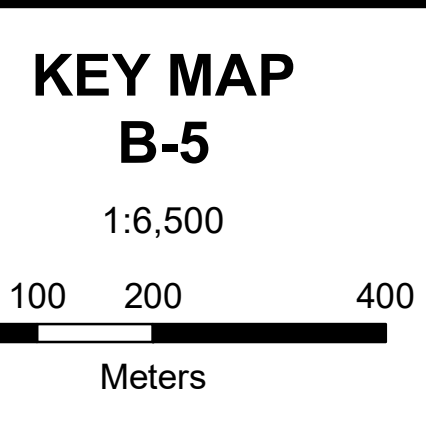
DISCLAIMER:  
 The City of London Tree Protection By-Law Maps and related information are made available for information only.  
 The City of London does not warrant that this information is the most current version or that there are no errors or omissions contained herein.  
 The City of London accepts no responsibility for damages, if any, suffered by any person as a result of decisions made or actions based on this information and any person undertaking work based on this information.  
 Any person undertaking work based on this information assumes all risk in connection therewith and any damages done or occasioned shall be at the sole risk and expense of that person.  
 Readers of this information should verify it with the City's Planning Services before acting on it.  
 No permission is given for distribution of the Tree Protection By-Law maps or related information for commercial purposes.  
 This information may be used for other purposes only if the user of this information repeats this disclaimer and the notice of copyright.  
 COPYRIGHT 2020



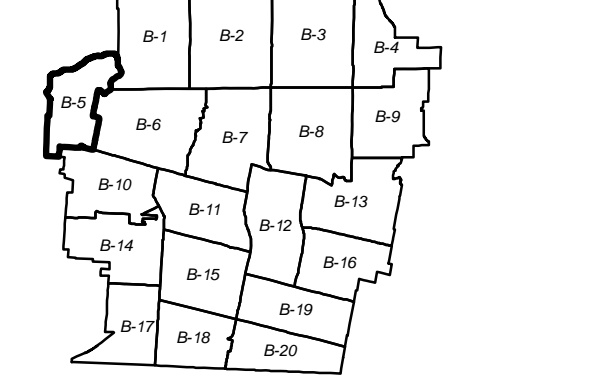




 Tree Protection Area



DISCLAIMER:  
 The City of London Tree Protection By-Law Maps and related information are made available for information only. The City of London does not warrant that this information is the most current version or that there are no errors or omissions contained herein. The City of London accepts no responsibility for damages, if any, suffered by any person as a result of decisions made or actions based on this information and any person undertaking work based on this information assumes all risk in connection therewith and any damages done or occasioned shall be at the sole risk and expense of that person. Any person undertaking work based on this information assumes all risk in connection therewith and any damages done or occasioned shall be at the sole risk and expense of that person. Readers of this information should verify it with the City's Planning Services before acting on it. No permission is given for distribution of the Tree Protection By-Law maps or related information for commercial purposes. This information may be used for other purposes only if the user of this information repeats this disclaimer and the notice of copyright.







London  
CANADA

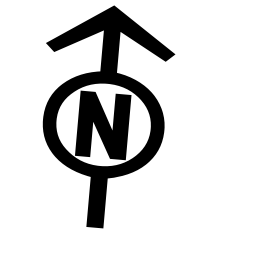
**CITY OF LONDON  
TREE PROTECTION  
BY-LAW**

**SCHEDULE B**  
as of October 26, 2020



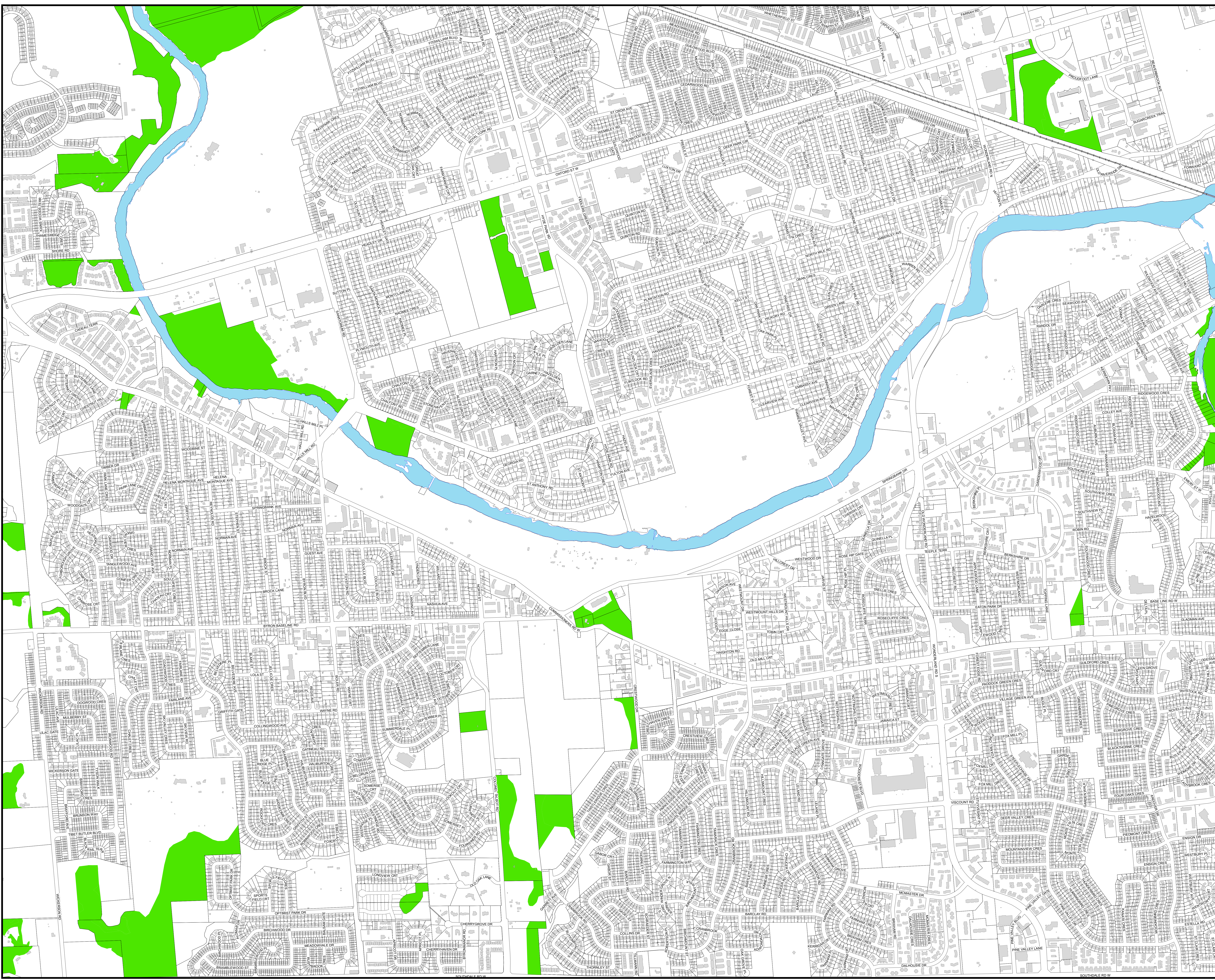
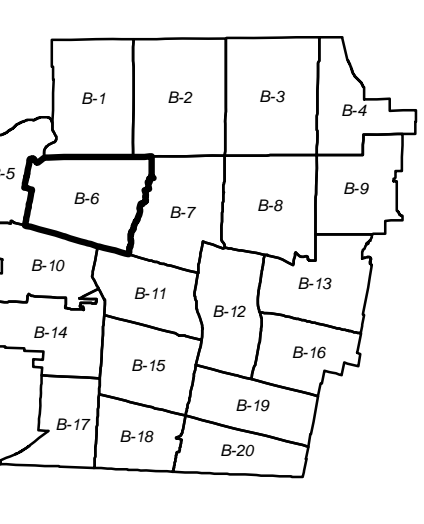
Tree Protection  
Area

**KEY MAP  
B-6**

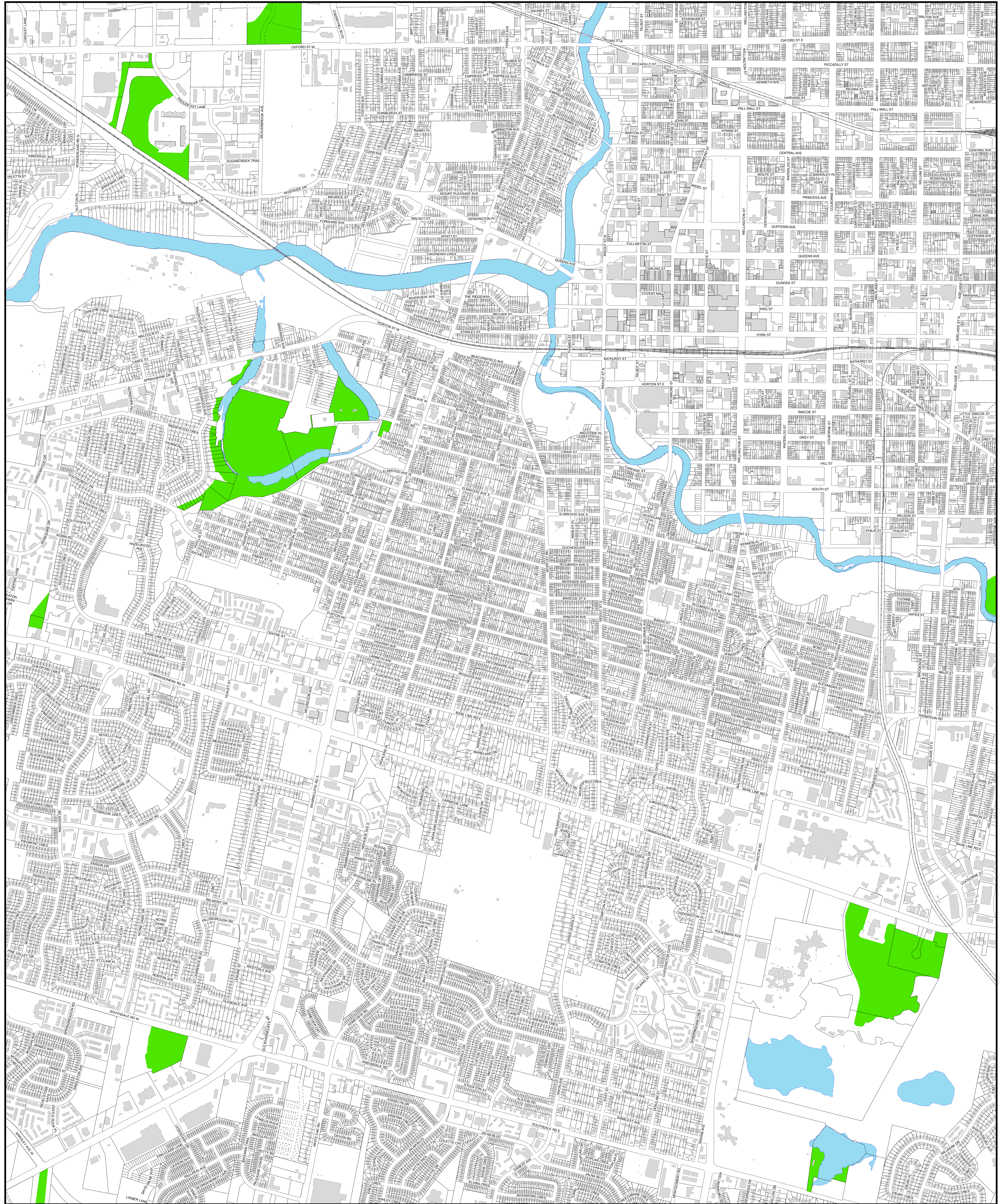


1:6,500  
0 50 100 200  
Meters

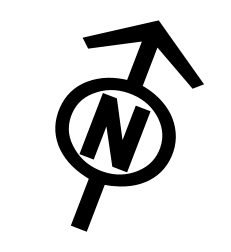
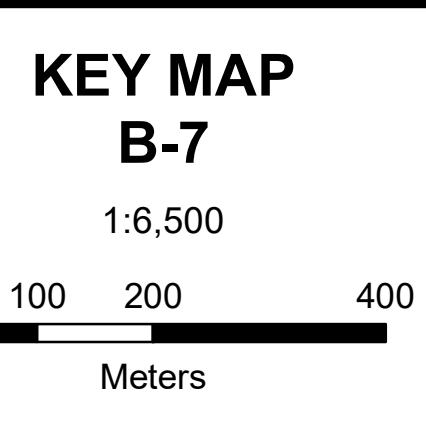
DISCLAIMER:  
The City of London Tree Protection By-Law Map and related information are made available for information only.  
The City of London does not warrant the accuracy, reliability, or completeness of the information contained herein.  
The City of London is not responsible for any errors or omissions in this information or for any damages, direct or indirect, arising from the use of this information.  
Any person using this information does so at their own risk. The City of London is not liable for any damages, direct or indirect, arising from the use of this information.  
Numbers in this document are only for reference. The City of London does not warrant the accuracy of the information for commercial purposes.  
This information may be used for other purposes only if the user of this information obtains the permission of the City of London.  
COPYRIGHT 2020



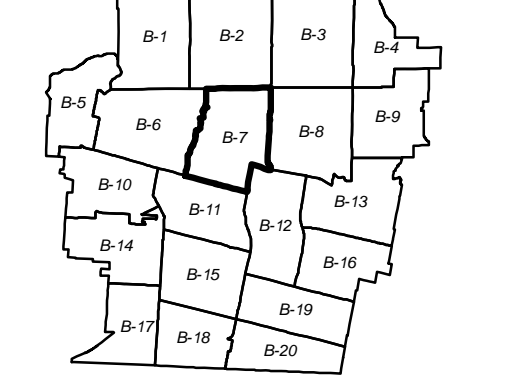




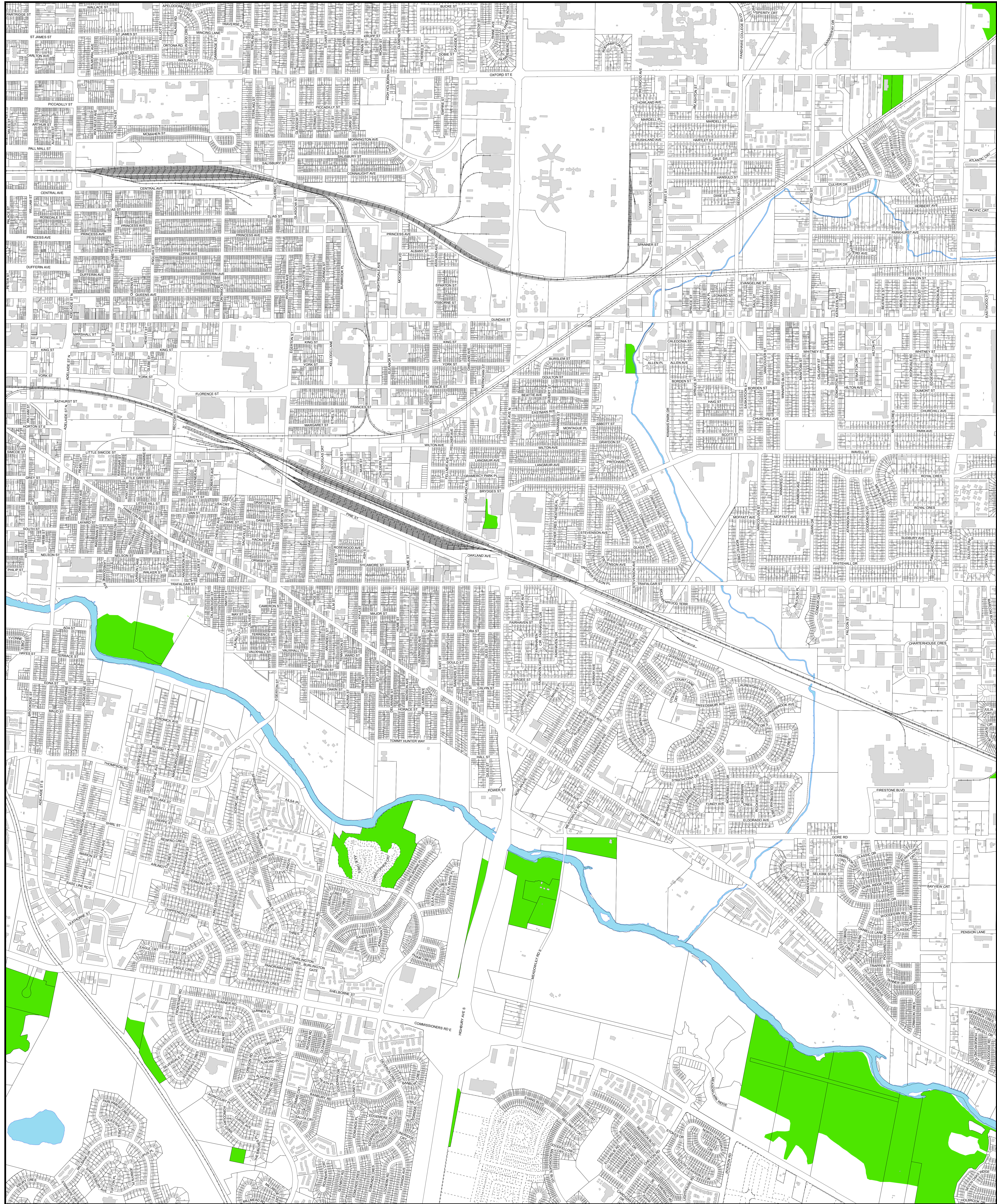
 Tree Protection Area



DISCLAIMER:  
 The City of London Tree Protection By-Law Maps and related information are made available for information only. The City of London does not warrant that the information is the most current version or that there are no errors or omissions contained herein. The City of London accepts no responsibility for damages, if any, suffered by any person as a result of decisions made or actions based on the information and any person undertaking work based on this information assumes all risk in connection therewith and any damages done or occasioned shall be at the sole risk and expense of that person. Readers of this information should verify it with the City's Planning Services before acting on it. No permission is given for distribution of the Tree Protection By-Law maps or related information for commercial purposes. This information may be used for other purposes only if the user of this information repeats this disclaimer and the notice of copyright.



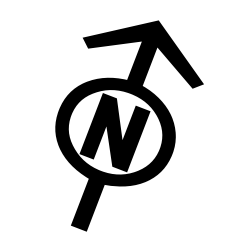




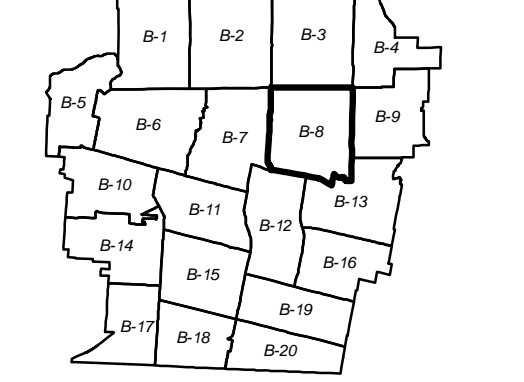
 Tree Protection Area

**KEY MAP**  
**B-8**

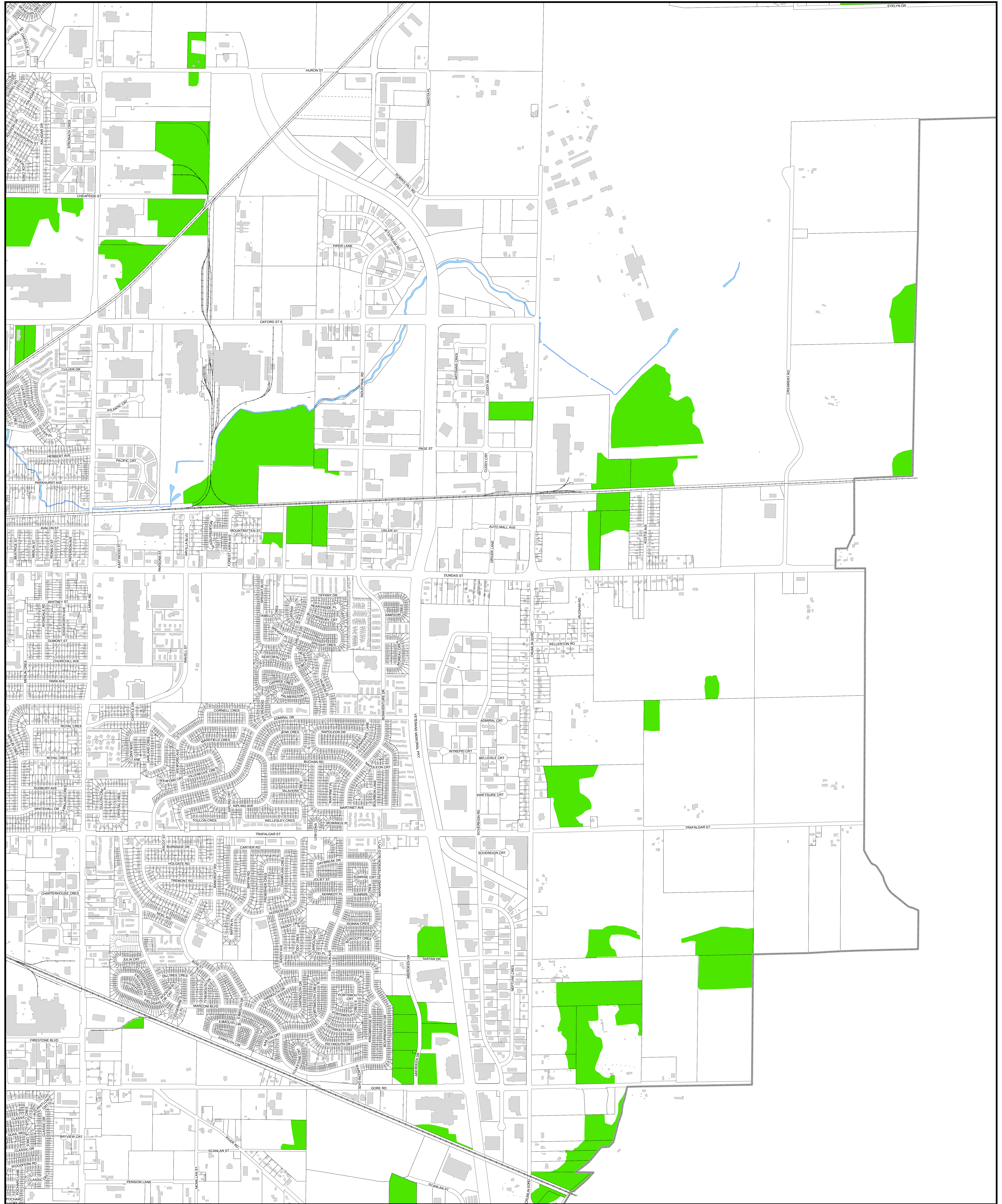
1:6,500  
 0 100 200 400  
 Meters



DISCLAIMER:  
 The City of London Tree Protection By-Law Maps and related information are made available for information only. The City of London does not warrant that this information is the most current version or that there are no errors or omissions contained herein. The City of London accepts no responsibility for damages, if any, suffered by any person as a result of decisions made or actions based on this information and any person undertaking work based on this information assumes all risk in connection therewith and any damages done or occasioned shall be at the sole risk and expense of that person.  
 Any person undertaking work based on this information should verify it with the City's Planning Services before acting on it.  
 No permission is given for the distribution of this Tree Protection By-Law map or related information for commercial purposes.  
 This information may be used for other purposes only if the user of this information repeats this disclaimer and the notice of copyright.  
 COPYRIGHT 2020



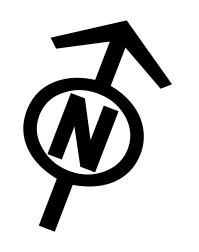




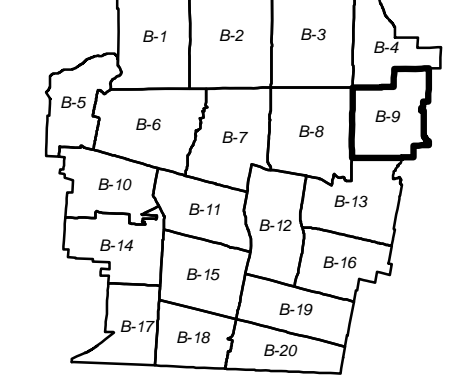
 Tree Protection Area

**KEY MAP**  
**B-9**

1:6,500  
 0 100 200 400  
 Meters



DISCLAIMER:  
 The City of London Tree Protection By-Law Maps and related information are made available for information only.  
 The City of London does not warrant that this information is the most current version or that there are no errors or omissions contained herein.  
 The City of London accepts no responsibility for damages, if any, suffered by any person as a result of decisions made or actions based on this information and any person undertaking work based on this information.  
 Any person undertaking work based on this information assumes all risk in connection therewith and any damages done or occasioned shall be at the sole risk and expense of that person.  
 Readers of this information should verify it with the City's Planning Services before acting on it.  
 No permission is given for distribution of this Tree Protection By-Law maps or related information for commercial purposes.  
 This information may be used for other purposes only if the user of this information repeats this disclaimer and the notice of copyright.  
 COPYRIGHT 2020







London  
CANADA

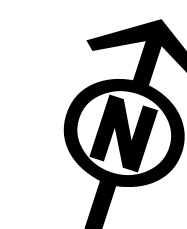
### CITY OF LONDON TREE PROTECTION BY-LAW

#### SCHEDULE B

as of October 26, 2020

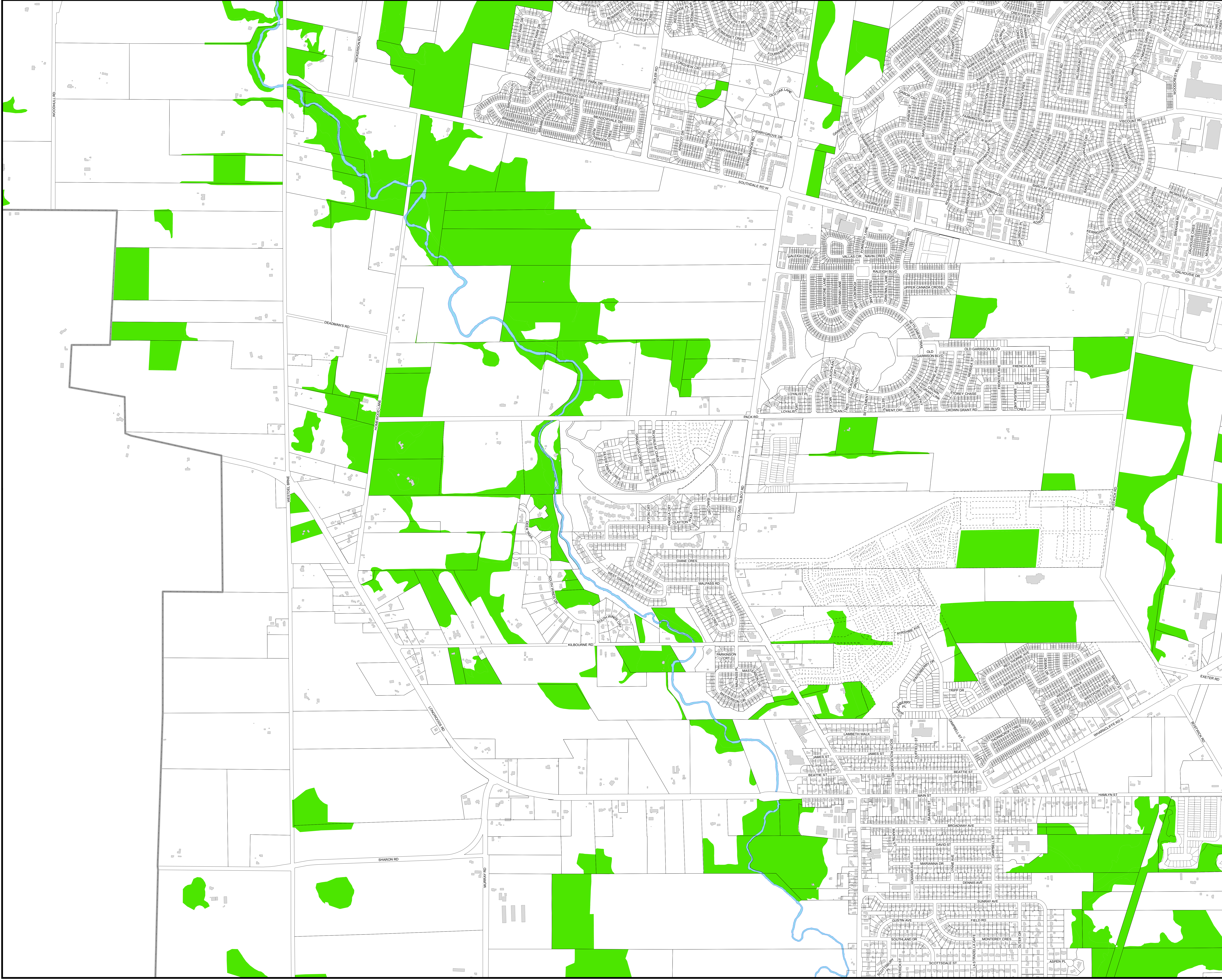
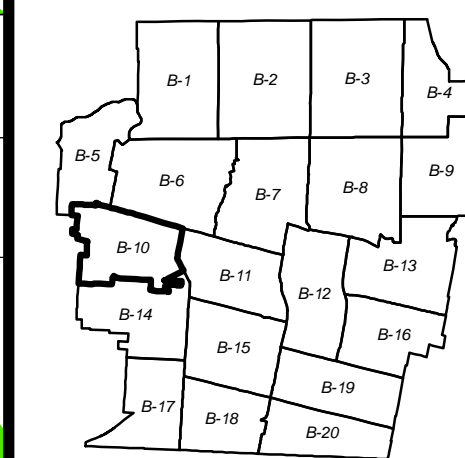
 Tree Protection Area

#### KEY MAP B-10



1:6,500  
0 50 100 200  
Meters

DISCLAIMER:  
The City of London Tree Protection By-Law and related information are made available for information only. The City of London does not warrant, represent or guarantee the accuracy, reliability, completeness or timeliness of the information. The City of London is not liable for any damages or losses of any kind, including but not limited to, direct, indirect, special, incidental or consequential damages, arising from the use of this information. This information may be used for other purposes only if the user of this information repeats this disclaimer and the notice of copyright.  
COPYRIGHT 2020







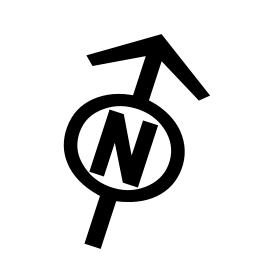
London  
CANADA

**CITY OF LONDON  
TREE PROTECTION  
BY-LAW**

**SCHEDULE B**  
as of October 26, 2020

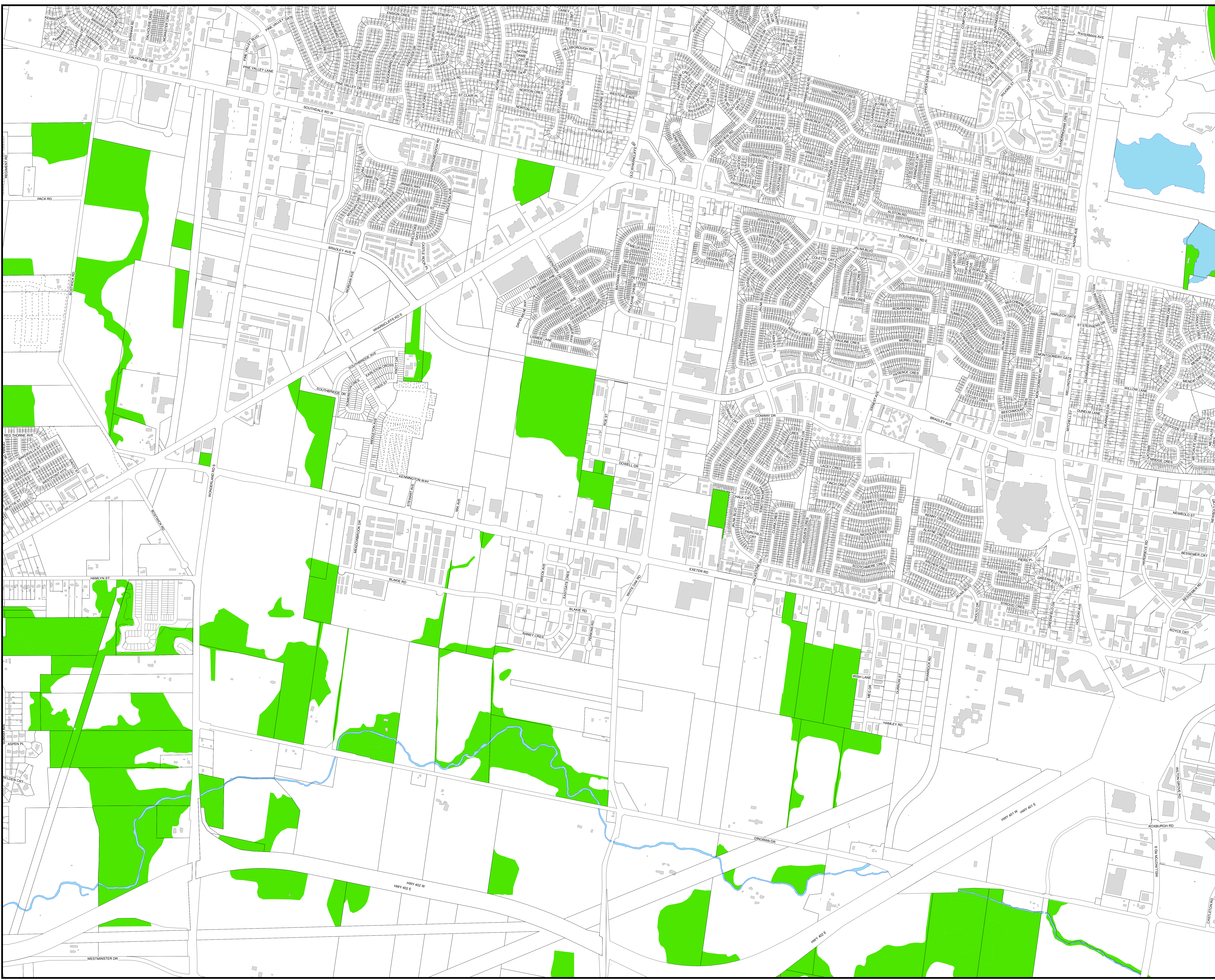
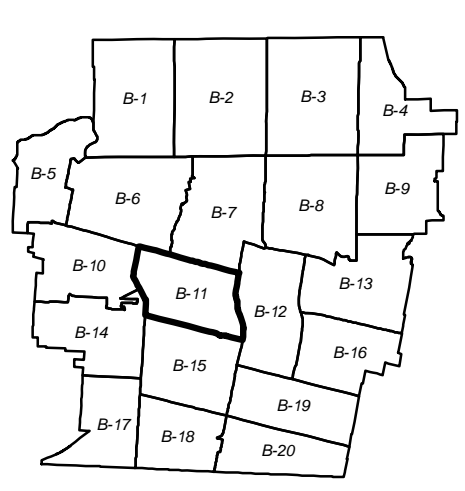
 Tree Protection Area

**KEY MAP  
B-11**

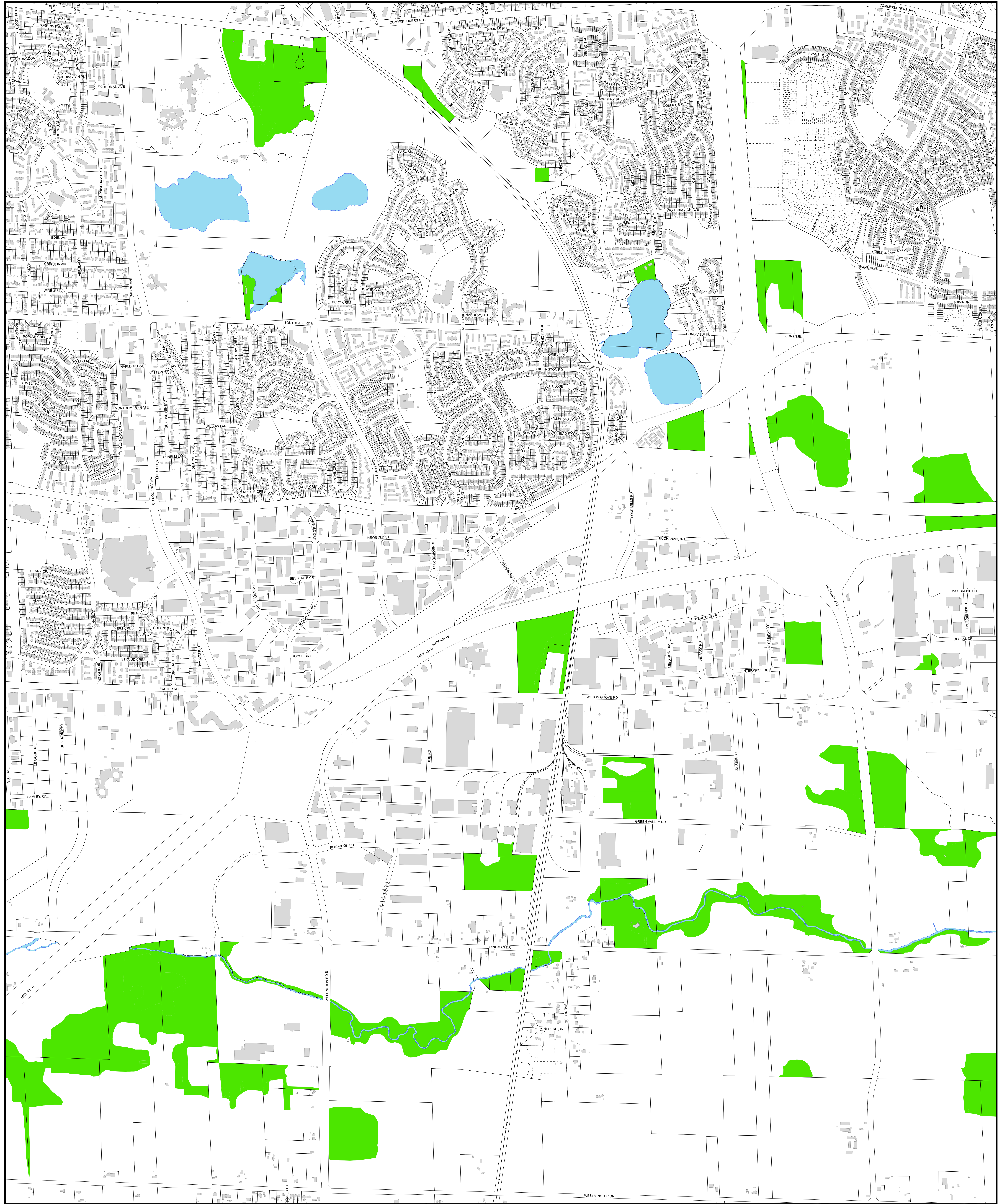


1:6,500  
0 50 100 200  
Meters

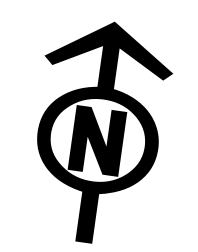
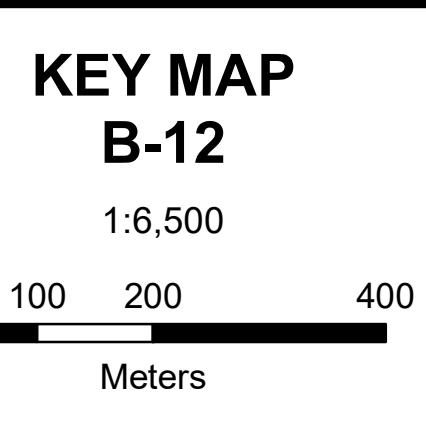
DISCLAIMER:  
The City of London Tree Protection By-Law and related information are made available for information only. The City of London assumes no responsibility for damages, injury, or liability of any person as a result of decisions made or actions based on this information. Any person undertaking work on the information assumes all risk in connection therewith and any damages done or consequential and the City of London shall not be liable for such damages. The City of London does not warrant the accuracy of this information. This information may be used for other purposes only if the user of this information repeats this disclaimer and the notice of copyright.  
COPYRIGHT 2020



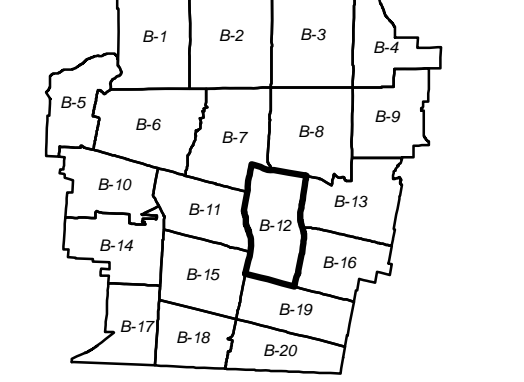




 Tree Protection Area



DISCLAIMER:  
 The City of London Tree Protection By-Law Maps and related information are made available for information only. The City of London does not warrant that this information is the most current version or that there are no errors or omissions contained herein. The City of London accepts no responsibility for damages, if any, suffered by any person as a result of decisions made or actions based on this information and any person undertaking work based on this information assumes all risk in connection therewith and any damages done or occasioned shall be at the sole risk and expense of that person. Any person undertaking work based on this information should verify it with the City's Planning Services before acting on it. No permission is given for distribution of the Tree Protection By-Law maps or related information for commercial purposes. This information may be used for other purposes only if the user of this information repeats this disclaimer and the notice of copyright.  
COPYRIGHT 2020







London  
CANADA

**CITY OF LONDON  
TREE PROTECTION  
BY-LAW**

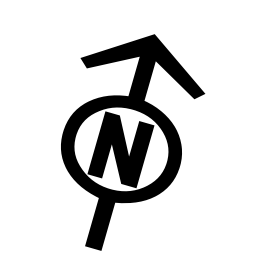
**SCHEDULE B**

as of October 26, 2020



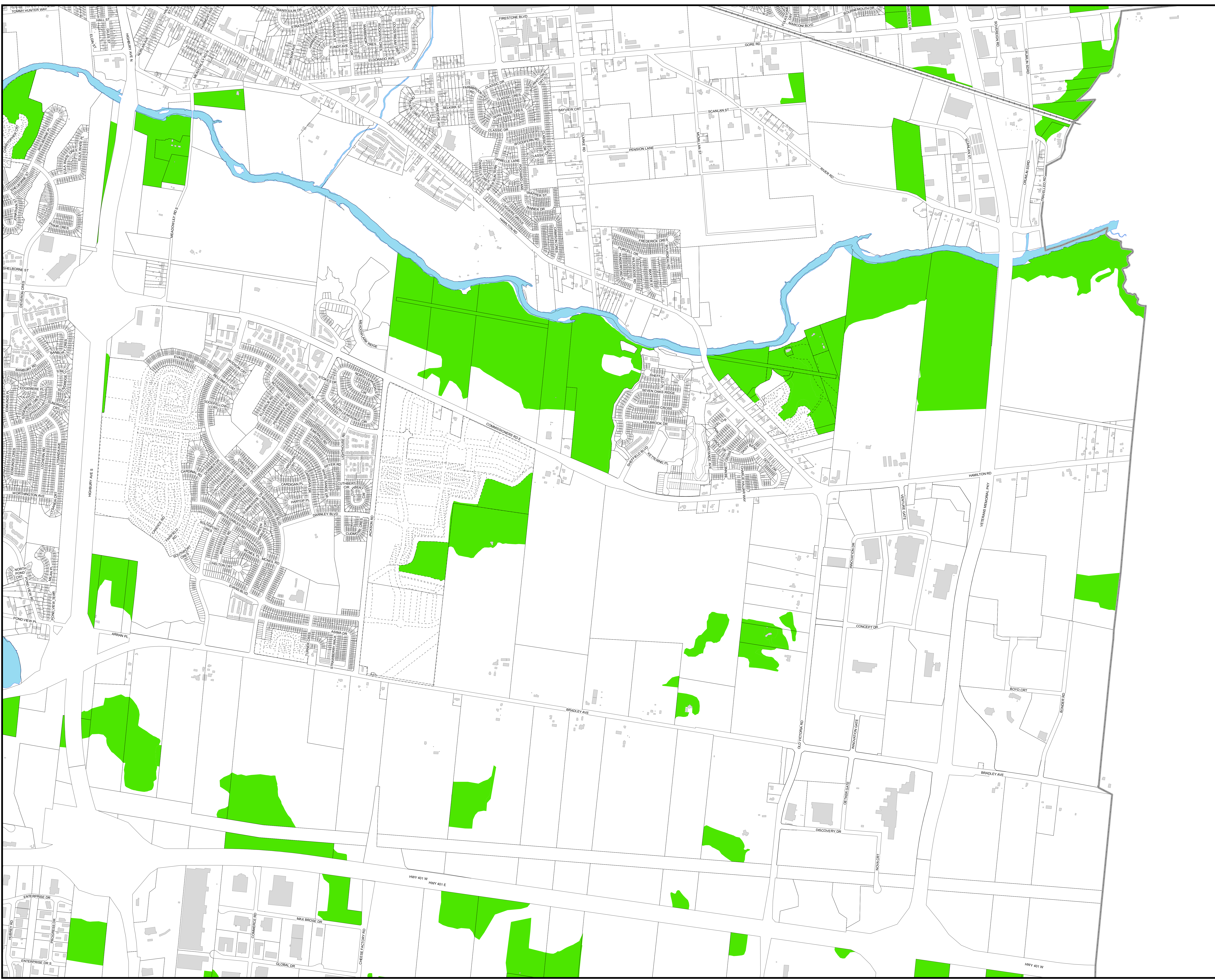
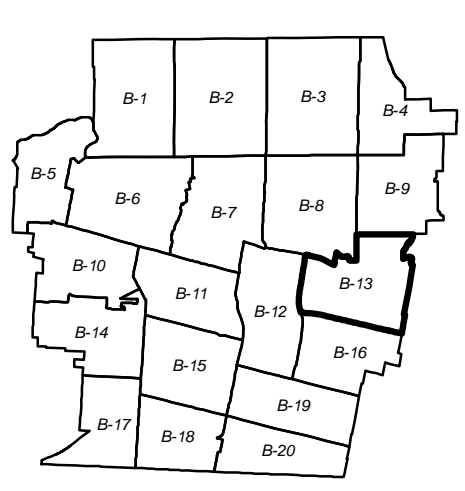
Tree Protection  
Area

**KEY MAP  
B-13**



1:6,500  
0 50 100 200  
Meters

DISCLAIMER:  
The City of London Tree Protection By-Law Map and related information are made available for information only. The City of London assumes no responsibility for damages, injury, or liability of any person as a result of decisions made or actions based on this information. Any person undertaking work on this information assumes all risk in connection therewith and any damages done or occasioned will be the responsibility of the user. The City's Planning Services assume no liability for commercial purposes. This information may be used for other purposes only if the user of this information repeats this disclaimer and the notice of copyright. COPYRIGHT 2020







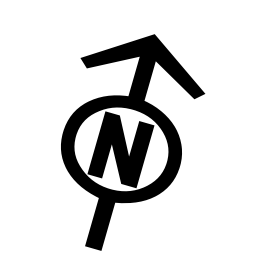
London  
CANADA

**CITY OF LONDON  
TREE PROTECTION  
BY-LAW**

**SCHEDULE B**  
as of October 26, 2020

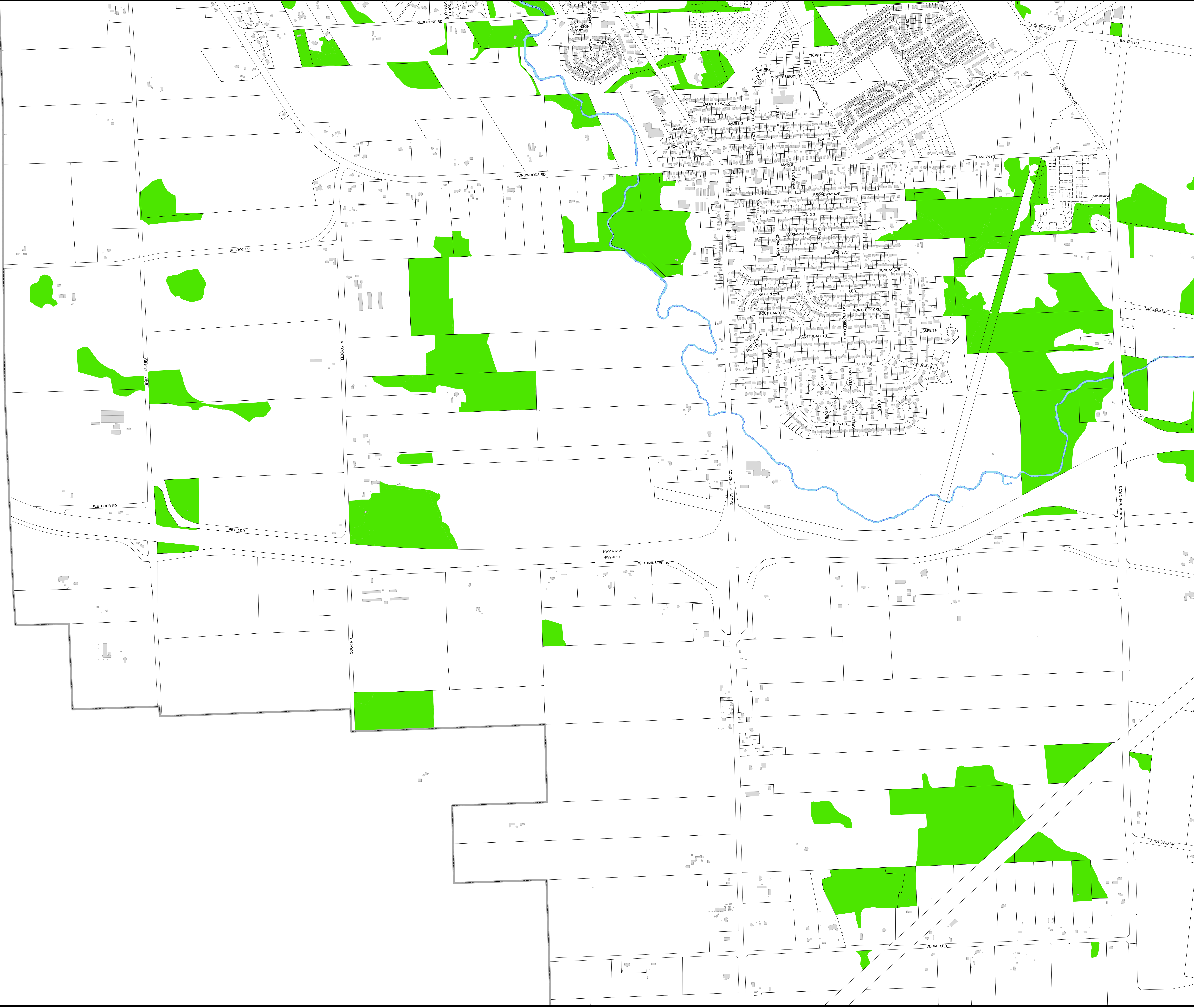
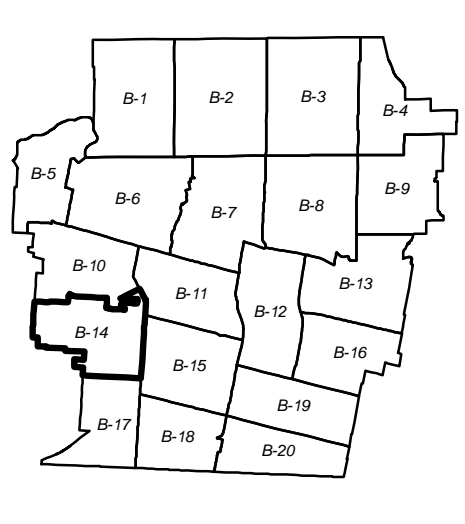
Tree Protection Area

**KEY MAP  
B-14**



1:6,500  
0 50 100 200  
Meters

DISCLAIMER:  
The City of London Tree Protection By-Law and related information are made available for information only. The City of London assumes no responsibility for damages, injury, liability or any person as a result of decisions made or actions based on the information provided. Any person undertaking work on the information assumes all risk in connection therewith and any damages done or consequential will be the responsibility of the user. The City's Planning Services assume no liability for commercial purposes. This information may be used for other purposes only if the user of this information repeats this disclaimer and the notice of copyright.  
COPYRIGHT 2020







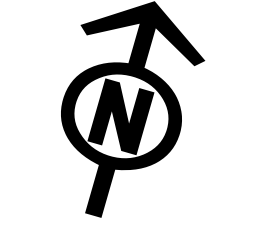
London  
CANADA

**CITY OF LONDON  
TREE PROTECTION  
BY-LAW**

**SCHEDULE B**  
as of October 26, 2020

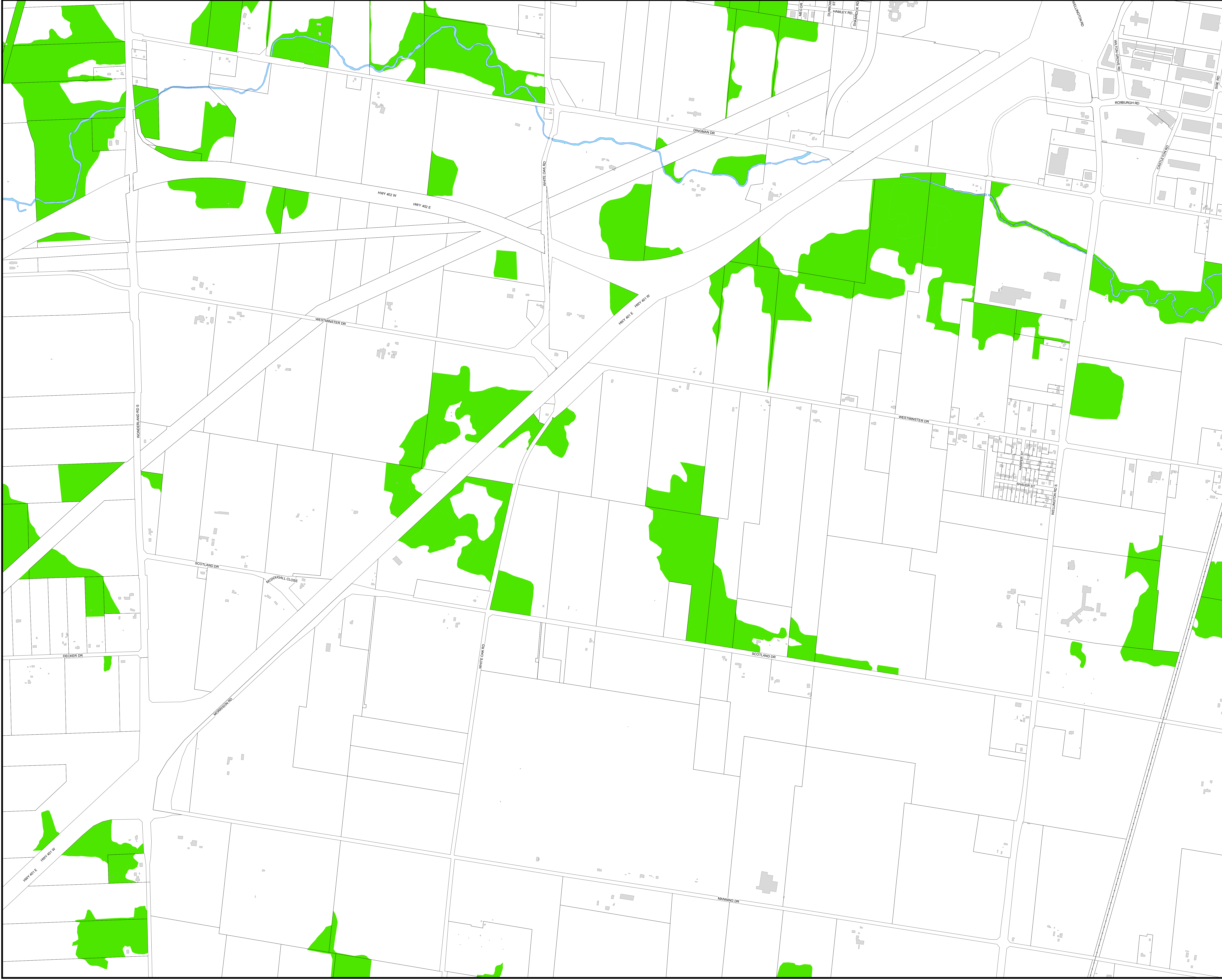
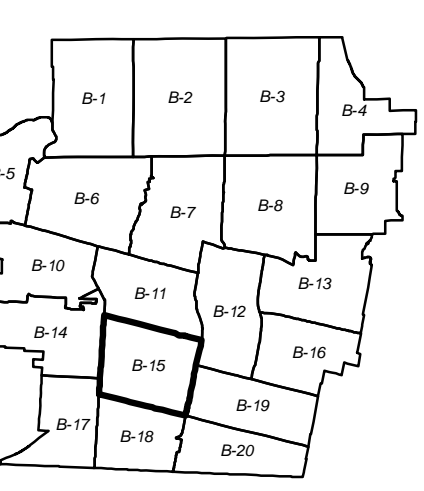
Tree Protection  
Area

**KEY MAP  
B-15**



1:6,500  
0 50 100 200  
Meters

DISCLAIMER:  
The City of London Tree Protection By-Law and related information are made available for information only. The City of London does not warrant, represent or guarantee the accuracy, completeness or reliability of the information. The City of London is not responsible for any damages or losses incurred by any person as a result of decisions made or actions based on the information. The City of London is not liable for any damages or losses incurred by any person as a result of decisions made or actions based on the information. The City of London is not liable for any damages or losses incurred by any person as a result of decisions made or actions based on the information. The City of London is not liable for any damages or losses incurred by any person as a result of decisions made or actions based on the information.








London  
CANADA

**CITY OF LONDON  
TREE PROTECTION  
BY-LAW**

**SCHEDULE B**  
as of October 26, 2020

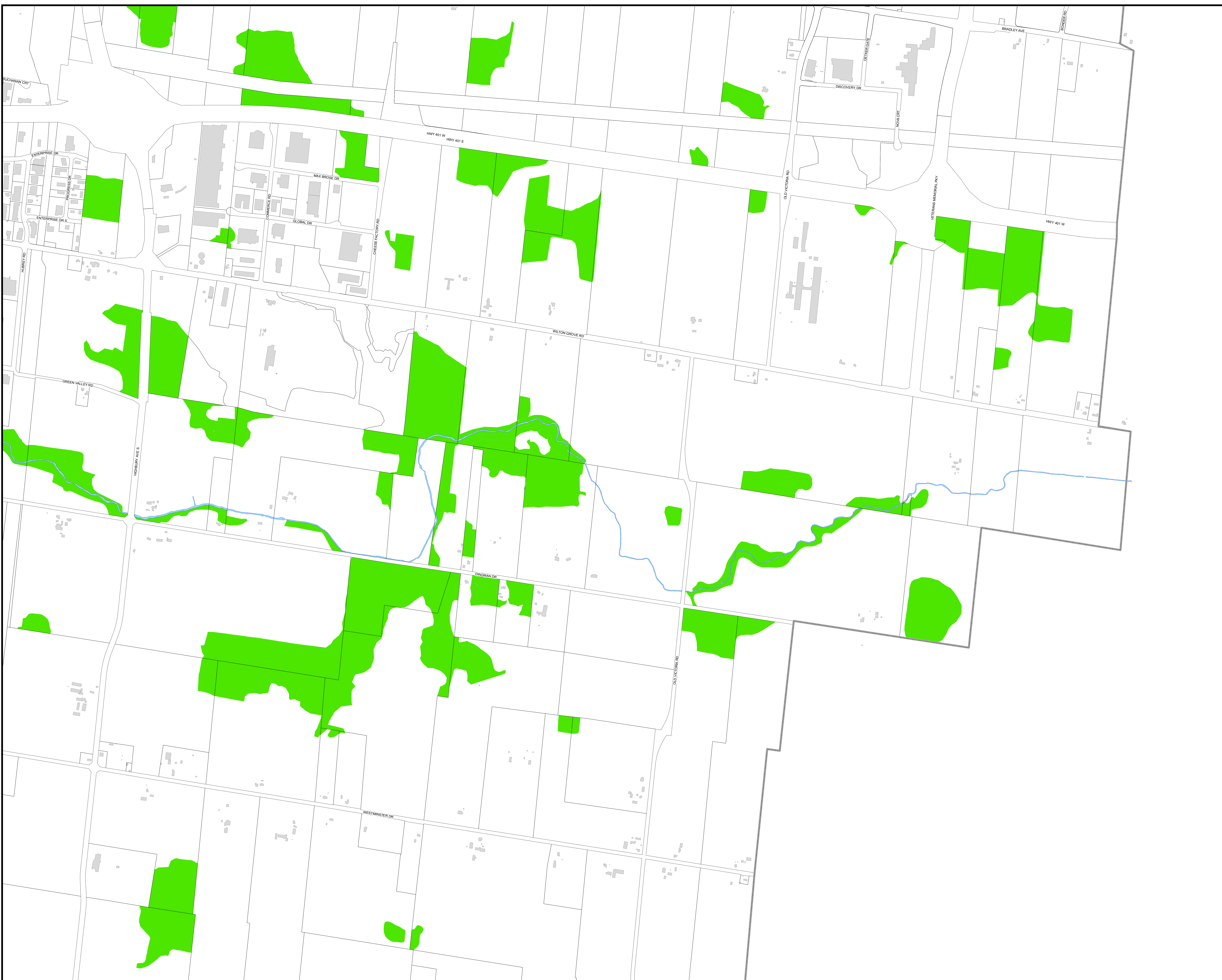
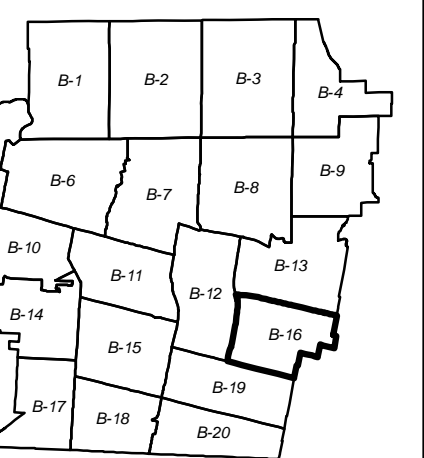
 Tree Protection Area

**KEY MAP  
B-16**

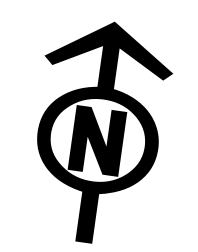
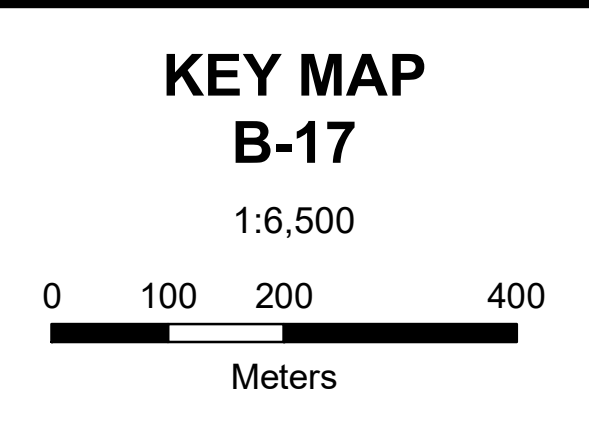
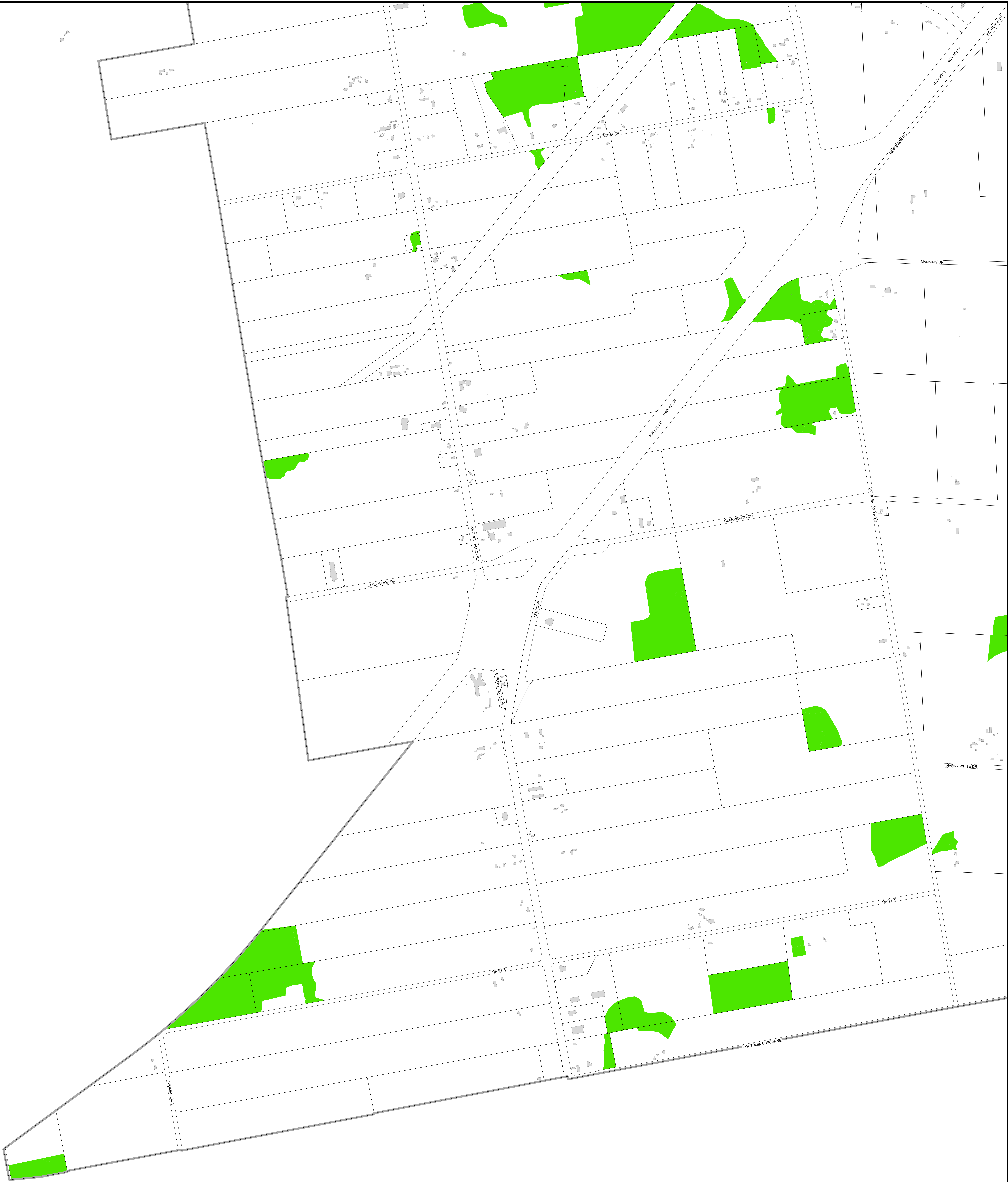


1:6,500  
0 50 100 200  
Meters

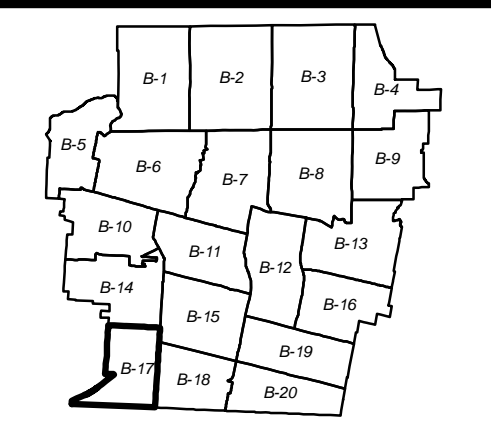
DISCLAIMER:  
The City of London Tree Protection By-Law information is made available for information only. The City of London is not responsible for any damage, injury, liability or any person as a result of decisions made or actions based on this information. Any person undertaking work on this information assumes all risk in connection therewith and any damages done or occasioned will be the responsibility of the user. The City's Planning Services assume no liability for commercial purposes. This information may be used for other purposes only if the user of this information repeats this disclaimer and the notice of copyright.  
COPYRIGHT 2020







**DISCLAIMER:**  
 The City of London Tree Protection By-Law Maps and related information are made available for information only. The City of London does not warrant that this information is the most current version or that there are no errors or omissions contained herein. The City of London accepts no responsibility for damages, if any, suffered by any person as a result of decisions made or actions based on this information and any person undertaking work based on this information assumes all risk in connection therewith and any damages done or occasioned shall be at the sole risk and expense of that person. Readers of this information should verify it with the City's Planning Services before acting on it. No permission is given for distribution of the Tree Protection By-Law maps or related information for commercial purposes. This information may be used for other purposes only if the user of this information repeats this disclaimer and the notice of copyright.







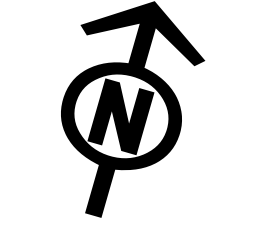
London  
CANADA

**CITY OF LONDON  
TREE PROTECTION  
BY-LAW**

**SCHEDULE B**  
as of October 26, 2020

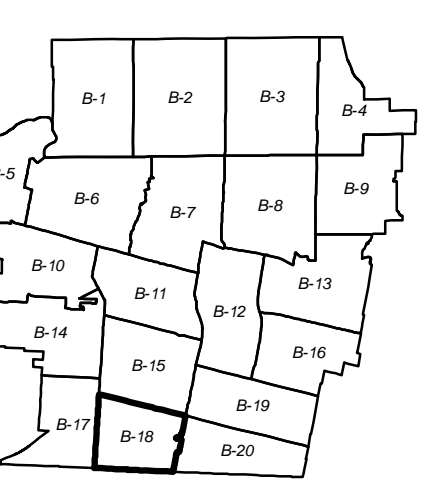
Tree Protection  
Area

**KEY MAP  
B-18**



1:6,500  
0 50 100 200  
Meters

DISCLAIMER:  
The City of London Tree Protection By-Law and related information are made available for information only.  
The City of London assumes no responsibility for damages, injury, or liability of any person as a result of decisions made or actions based on this information.  
Any person undertaking work based on this information assumes all risk in connection therewith and any damages done or consequential will be the responsibility of the person undertaking the work.  
The City's Planning Services assume no liability for commercial purposes.  
This information may be used for other purposes only if the user of this information repeats this disclaimer and the notice of copyright.  
COPYRIGHT 2020







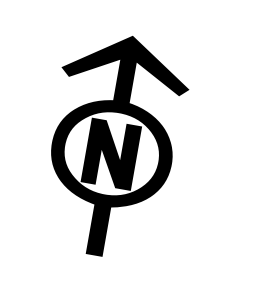
London  
CANADA

**CITY OF LONDON  
TREE PROTECTION  
BY-LAW**

**SCHEDULE B**  
as of October 26, 2020

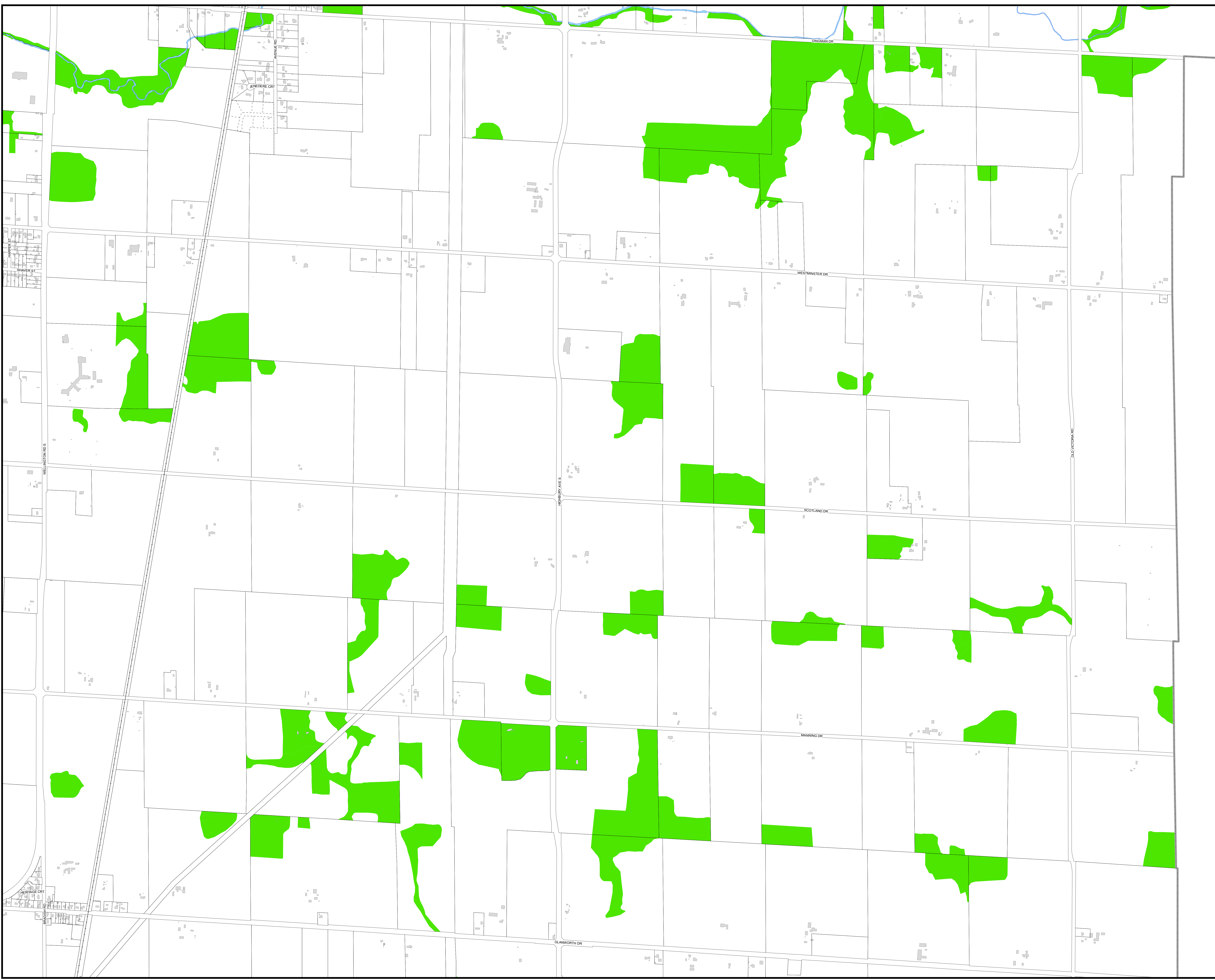
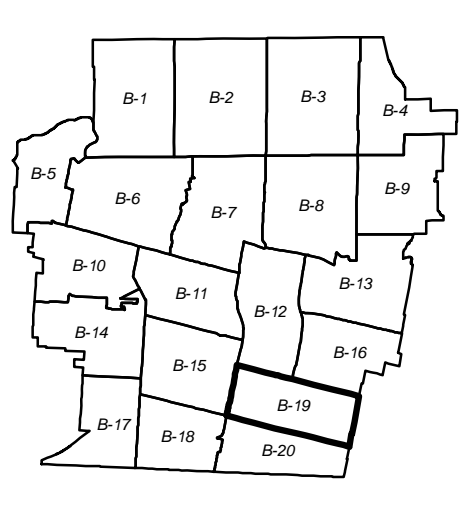


**KEY MAP  
B-19**



1:7,000  
0 55 110 220  
Meters

DISCLAIMER:  
The City of London Tree Protection By-Law and related information are made available for information only.  
The City of London does not warrant the accuracy, completeness, or reliability of any information contained herein.  
Any person undertaking work on the information assumes all risk in connection therewith and any damages done or occasioned will be the responsibility of the user.  
The City of London is not liable for any loss or damage, including consequential damages, arising from the use of this information.  
This information may be used for other purposes only if the user of this information repeats this disclaimer and the notice of copyright.  
COPYRIGHT 2020







London  
CANADA

**CITY OF LONDON  
TREE PROTECTION  
BY-LAW**

**SCHEDULE B**

as of October 26, 2020

Tree Protection  
Area

**KEY MAP  
B-20**



1:7,000  
0 55 110 220  
Meters

**DISCLAIMER:**  
The City of London Tree Protection By-Law and related information are made available for information only. The City of London assumes no responsibility for damages, injury, or liability of any person as a result of decisions made or actions based on the information provided. Any person undertaking work based on this information assumes all risk in connection therewith and any damages done or occasioned shall be the responsibility of the person undertaking such work. The City's Planning Services assume no liability for commercial purposes. This information may be used for other purposes only if the user of this information repeats this disclaimer and the notice of copyright.  
COPYRIGHT 2020

