

Bill No. 170  
2020

By-law No. S.-\_\_\_\_-\_\_\_\_

A by-law to lay out, constitute, establish and assume lands in the City of London as public highway. (as widening to Dundas Street, east of Hale Street; and as widening to Hale Street, south of Dundas Street)

WHEREAS it is expedient to establish the lands hereinafter described as public highway;

NOW THEREFORE the Municipal Council of The Corporation of the City of London enacts as follows:

1. The lands and premises hereinafter described are laid out, constituted, established and assumed as public highway as widening to Dundas Street, east of Hale Street, namely:

“Part of Lots 9 and 10 on Registered Plan 50(C) in the City of London and County of Middlesex, designated as Part 1 on Reference Plan 33R-20397.”

2. The lands and premises hereinafter described are laid out, constituted, established and assumed as public highway as widening to Hale Street, south of Dundas Street, namely:

“Part of Lot 9 on Registered Plan 418(C) in the City of London and County of Middlesex, designated as Part 2 on Reference Plan 33R-20397.

and

Part of Lot 8 on Registered Plan 418(C) in the City of London and County of Middlesex, designated as Part 4 on Reference Plan 33R-20397.

and

Part of Lot 6 on Registered Plan 418(C) in the City of London and County of Middlesex, designated as Part 6 on Reference Plan 33R-20397.

and

Part of Lot 7 on Registered Plan 418(C) in the City of London and County of Middlesex, designated as Part 8 on Reference Plan 33R-20397.

and

Part of Lot 5 on Registered Plan 418(C) in the City of London and County of Middlesex, designated as Part 9 on Reference Plan 33R-20397.”

3. This by-law comes into force and effect on the day it is passed.

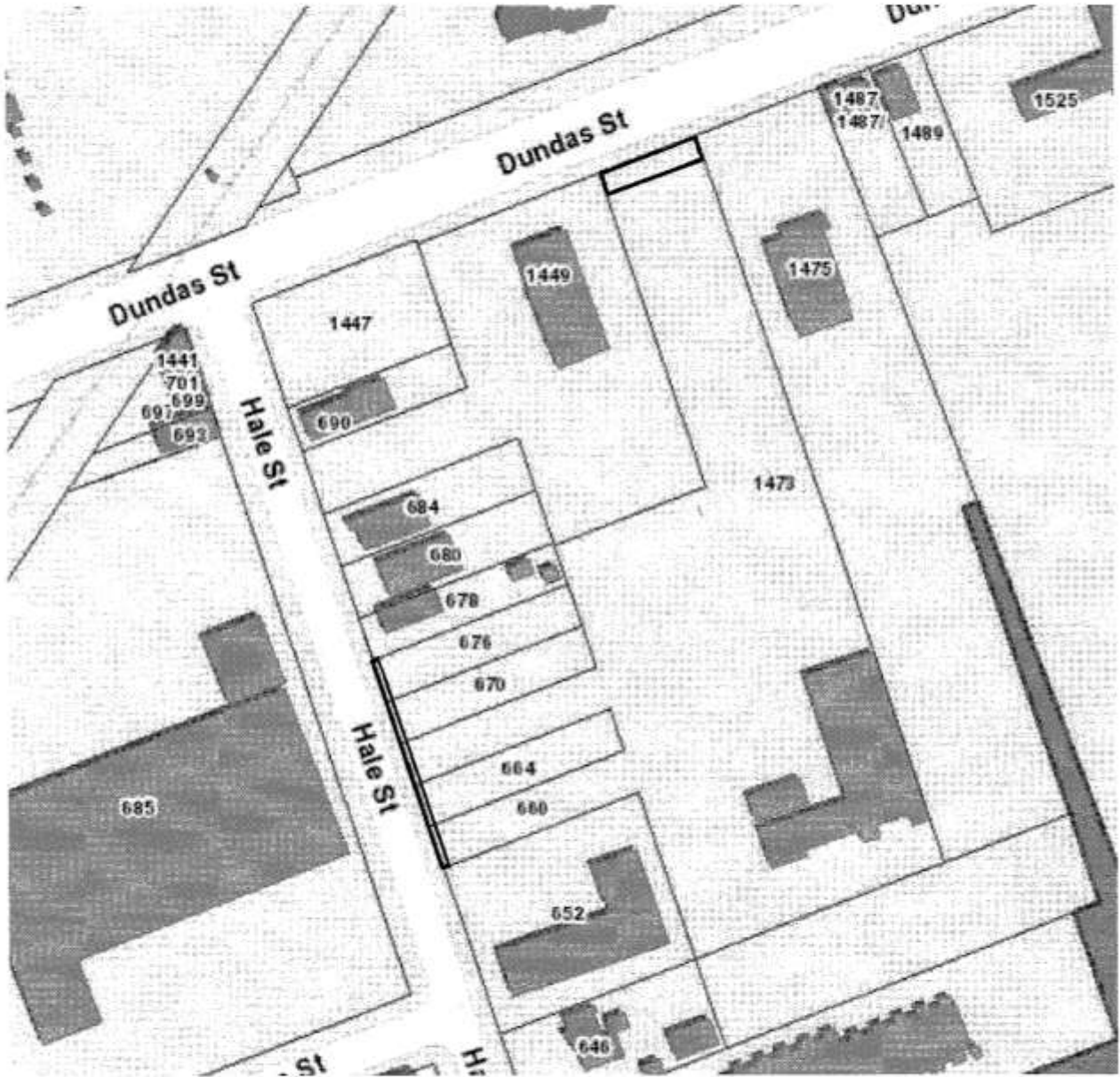
PASSED in Open Council on May 19, 2020.

Ed Holder  
Mayor

Catharine Saunders  
City Clerk

First Reading – May 19, 2020  
Second Reading – May 19, 2020  
Third Reading – May 19, 2020

# LOCATION MAP



 SUBJECT LANDS