

Bill No. 125
2020

By-law No. S.-____-____

A by-law to assume certain works and services
in the City of London. (Cedar Hollow
Subdivision – Phase 1; 33M-580)

WHEREAS the Managing Director, Environmental & Engineering Services and City Engineer of The Corporation of the City of London has reported that works and services have been constructed to her satisfaction in Cedar Hollow Subdivision Phase 1 (33M-580);

AND WHEREAS it is deemed expedient to assume the said works and services;

NOW THEREFORE the Municipal Council of The Corporation of the City of London enacts as follows:

1. The Corporation of the City of London assumes the following works and services, namely:

Cedar Hollow Subdivision – Phase 1, Stage 1; 33M-580
Cedar Hollow Developments c/o Auburn Developments

Cedarpark Way formally Cedarpark Crescent; North Leg

2. The warranty period for the works and services in the subdivision referred to in Section 1 of this by-law is for the period of February 24, 2020 to February 25, 2021.

3. This by-law comes into force and effect on the day it is passed.

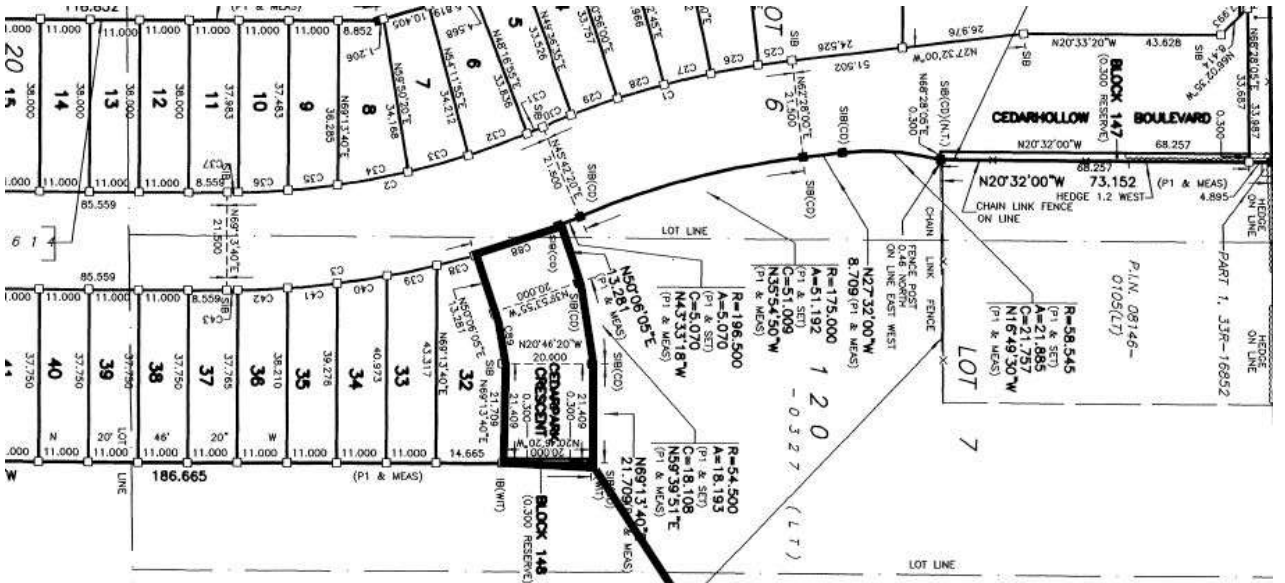
PASSED in Open Council on March 24, 2020.

Jesse Helmer
Deputy Mayor

Catharine Saunders
City Clerk

First Reading – March 24, 2020
Second Reading – March 24, 2020
Third Reading – March 24, 2020

Assumption Limits



PLAN



Robin W. Panzer - General Manager of
Planning and Development
Approval Authority for the City of London

ASSUMPTION LIMIT.

LOTS 14, 15, 16

AND PART OF

UNNAMED ROADWAY

(CLOSED BY COURT ORDER, REGISTERED AS INSTRUMENT EP202654)

AND ALL OF THE
RESERVED PORTION
AS SHOWN ON

REGISTERED PLAN No. 120(C)

IN THE
CITY OF LONDON
COUNTY OF MIDDLESEX
SCALE 1:1000 (Metre)

J. ANDREW SMITH
ONTARIO LAND SURVEYOR



LEGEND:

BEARINGS ARE U.T.M. GRID (NAD'83 REFERENCE), DERIVED FROM STATION NO. 28942015 AND STATION NO. 28942019 AND ARE REFERRED TO THE CENTRAL MERIDIAN 81°00' WEST LONGITUDE, ZONE 17.

CONTROL SCHEDULE (GRID VALUES: U.T.M. NAD'83 REFERENCE)			
STATION	NORTHING	EASTING	
028942015	4786202.591	483010.790	
028942019	4785010.049	481747.613	
A	4785785.403	482385.715	
B	4785321.322	482293.379	

P.L. Arso
DEP. LAND REGISTRAR