

# Item 2.6



## Dingman Creek Stormwater Servicing: Master Plan EA - Schedule B Notice of Completion for Stage 1 Lands

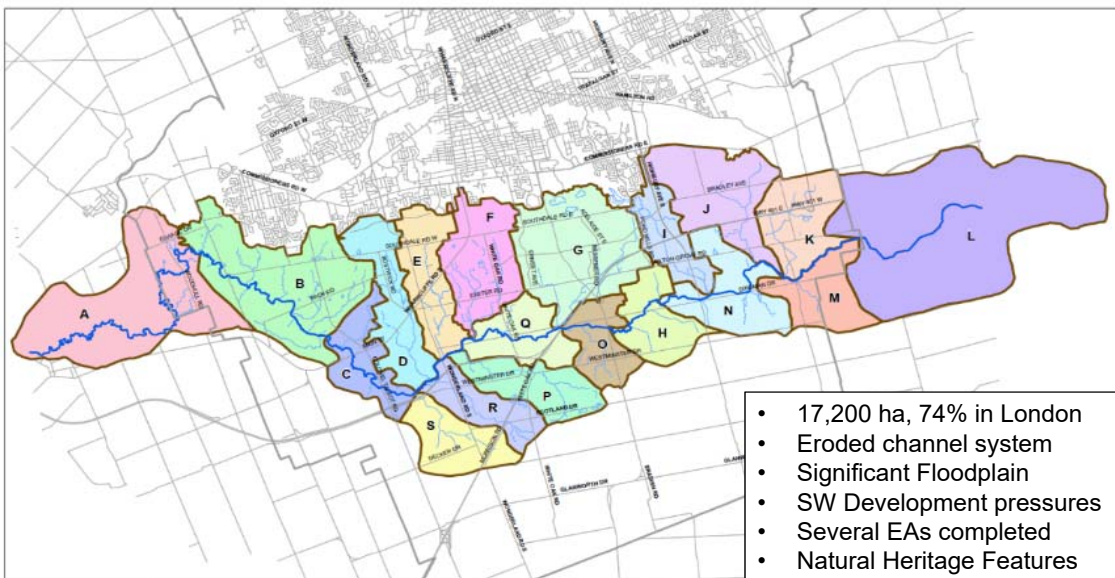


Civic Works Committee  
February 4, 2020

Shawna Chambers, P.Eng., DPA  
Division Manager, Stormwater Engineering, City of London  
[schambers@london.ca](mailto:schambers@london.ca)  
519-661-2489 x7318



## Dingman Creek Subwatershed



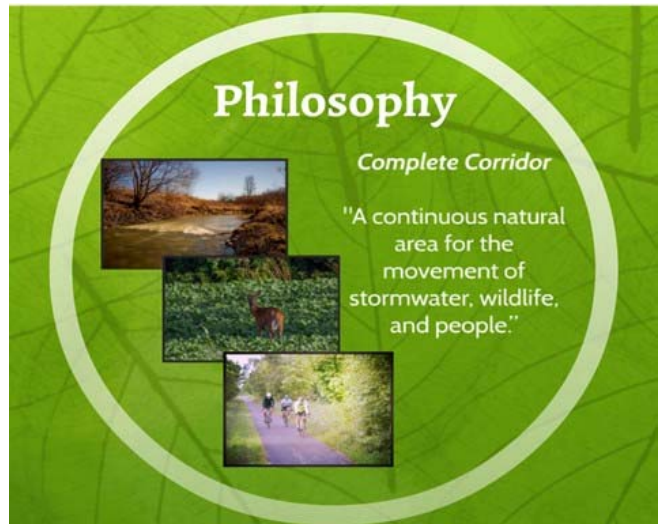
**Purpose:** To develop an innovative stormwater servicing strategy with consideration for current and potential flooding, erosion concerns, as well as wildlife/aquatic habitat and natural corridor enhancement.

## Item 2.6



# Complete Corridor Approach

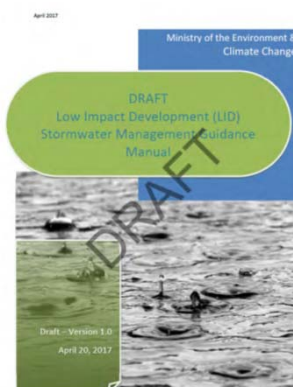
- Integrate natural heritage, open space, recreational, and SWM
- Continuous corridor to protect, maintain, rehabilitate, and restore ecological functions



# Provincial expectations for Low Impact Development (LID)

- Ministry of Environment, Conservation and Parks (MECP) Bulletin Re: Stormwater Management (*February 2015*)
- Draft Provincial LID Guidance Manual posted in 2016 and 2018; pending release of final version.

Going forward, the Ministry expects that stormwater management plans will reflect the findings of watershed, sub-watershed, and environmental management plans, and will employ LID in order to maintain the natural hydrologic cycle to the greatest extent possible.



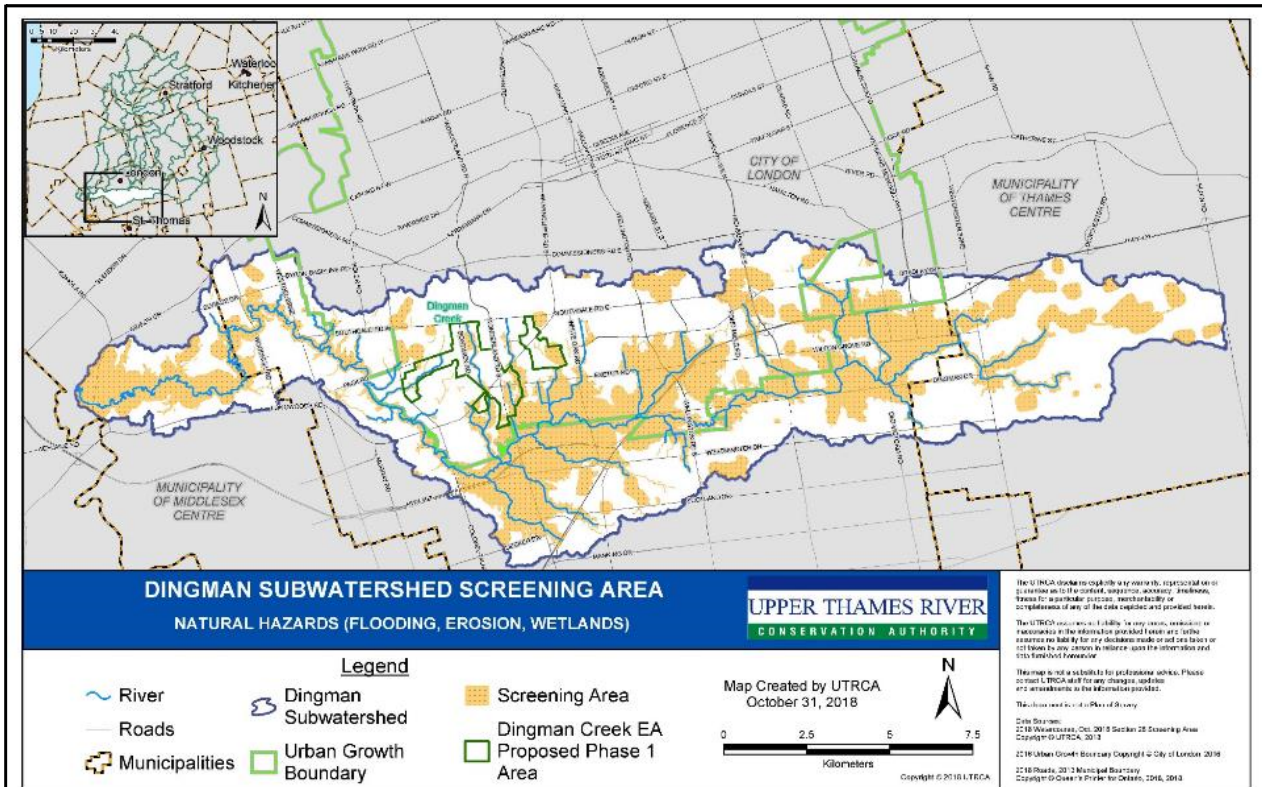


# Item 2.6



## Engage! Hearts and Minds

- Stakeholder Group with Gov't Agencies, Developers, City Environmental Advisory Committees and Councilors
- 2 Public Information Centres (PIC)s
- 2 meetings with First Nations at the COTTfN offices
- Logos, professional photography, and drone footage
- <https://getinvolved.london.ca/DingmanCreek>



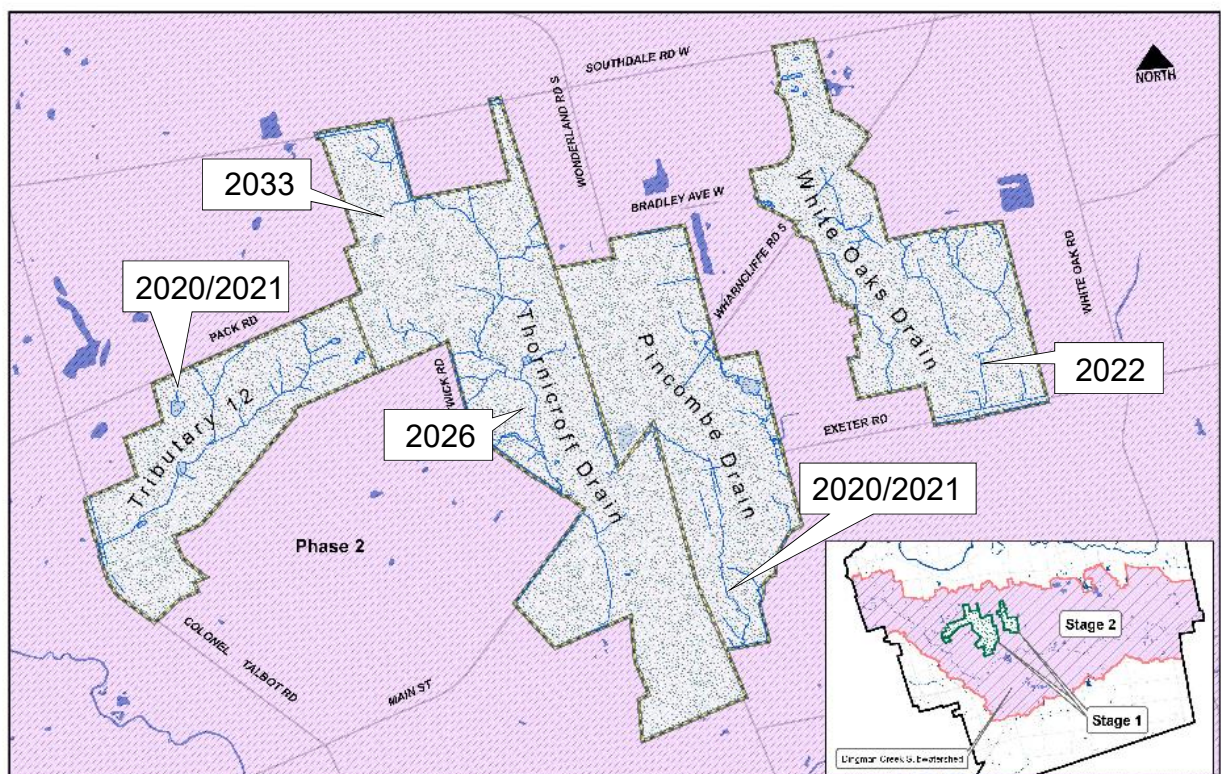
### PEC November 2018 – UTRCA Dingman Screening Area

## Item 2.6



# March 2019: Staging of EA

- **Stage 1:** lands less impacted by floodplain expansion
  - Recommend Stormwater Servicing solutions for developable lands within 5-7 year Growth Period
  - Generally outside of Dingman Creek zone of influence
- **Stage 2:** lands directly impacted by the proposed floodplain (by 2021).
  - Assess viable options to mitigate expansion of floodplain
  - Recommend Stormwater Servicing solutions for developable lands



Stage 1 Lands with 2019 GMIS SWM Infrastructure Timing





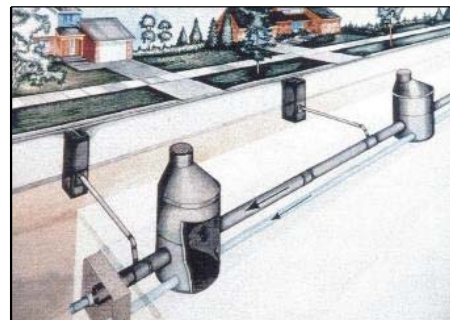
## Schedule B EA Alternatives

- Subwatershed Management Strategies comprised of a suite of management options:
  1. Do Nothing
  2. Traditional Strategy (i.e. wet ponds)
  3. Low Impact Development (LID) Strategy
  4. Combined Traditional & LID
  5. Deferred - Integrated Dingman Creek Corridor



## Holistic Stormwater Approach

- Infiltrate, filtrate, reuse or evapotranspirate the 90% storm (25mm).
- LIDs meet water quality, water balance, and erosion targets.
- Dry ponds provide flood storage.
- Climate Change Resiliency – LIDs reduce runoff and ponds manage large storms through overland flow routes



# Item 2.6



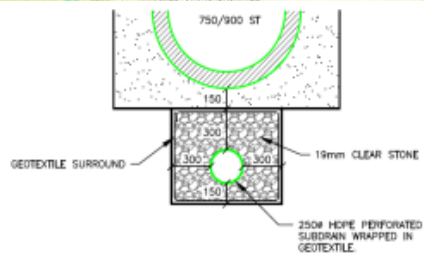
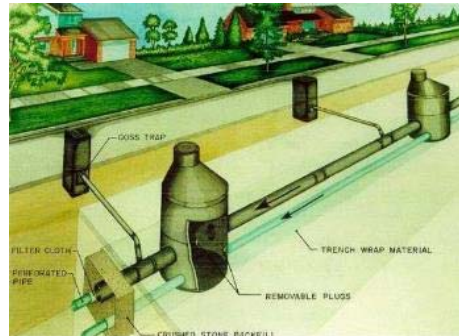
## LIDs by Land Use: Low Density Residential

Per 2019 Development Charges,  
LID Subsidy includes linear  
Infiltration:

- Third pipe systems
- Infiltration swales
- Rain gardens in select locations



Waterloo Street, London Ontario, Constructed 2017



SUBDRAIN DETAIL



## Medium and High Density, ICI: Private Permanent Systems

- Linear infiltration, plus:
  - Rain Gardens integrated with landscaping
  - Green/white roof storage
  - Green parking lot opportunities



Firehall 11, London Ontario, Constructed 2017





# Stormwater Strategy

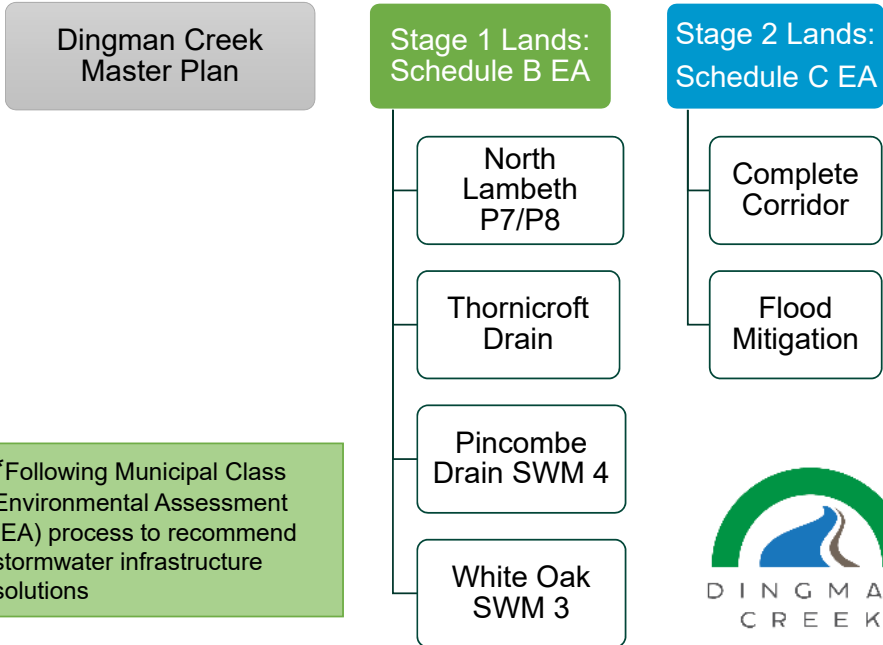


- Highlights:**
- 13 Municipal Dry Ponds
  - 2 Complete Corridors
  - 3 Channel Restoration projects
  - Low Impact Development 25mm capture for development
  - Cost estimate = \$65.4M
  - To be incorporated into future Development Charges Studies

|   |  |  |
|---|--|--|
| <p>Date: November 2019<br/>Revision: 002 of 001 - 001</p> | <p><b>Dingman Creek Subwatershed Study</b></p> | <p><b>Implementation Plan - Overview</b></p> |
|---|--|--|



# Dingman EA\* Flow Chart



\*Following Municipal Class Environmental Assessment (EA) process to recommend stormwater infrastructure solutions





## Item 2.6



### Stage 1 EA Timelines



#### **Q1 2020:**

- February-March: Issue Notice of Completion and 30-day public/agency review period

#### **Q2 2020 (Pending no Requests for Part II Order):**

- Retain consultants to service Stage 1 tributaries

#### **2021+:**

- Construct recommended SWM works within Stage 1 Lands per Growth Management Implementation Strategy (GMIS)



### UTRCA Regulatory Floodplain and Stage 2 EA Timeline

#### **Q1 2020 :**

- City's Advisory Services review (by AECOM) recommended changes to UTRCA's modelling
- UTRCA reviewing timeline to refine modelling and adjust existing floodplain limits, or identify areas of future study

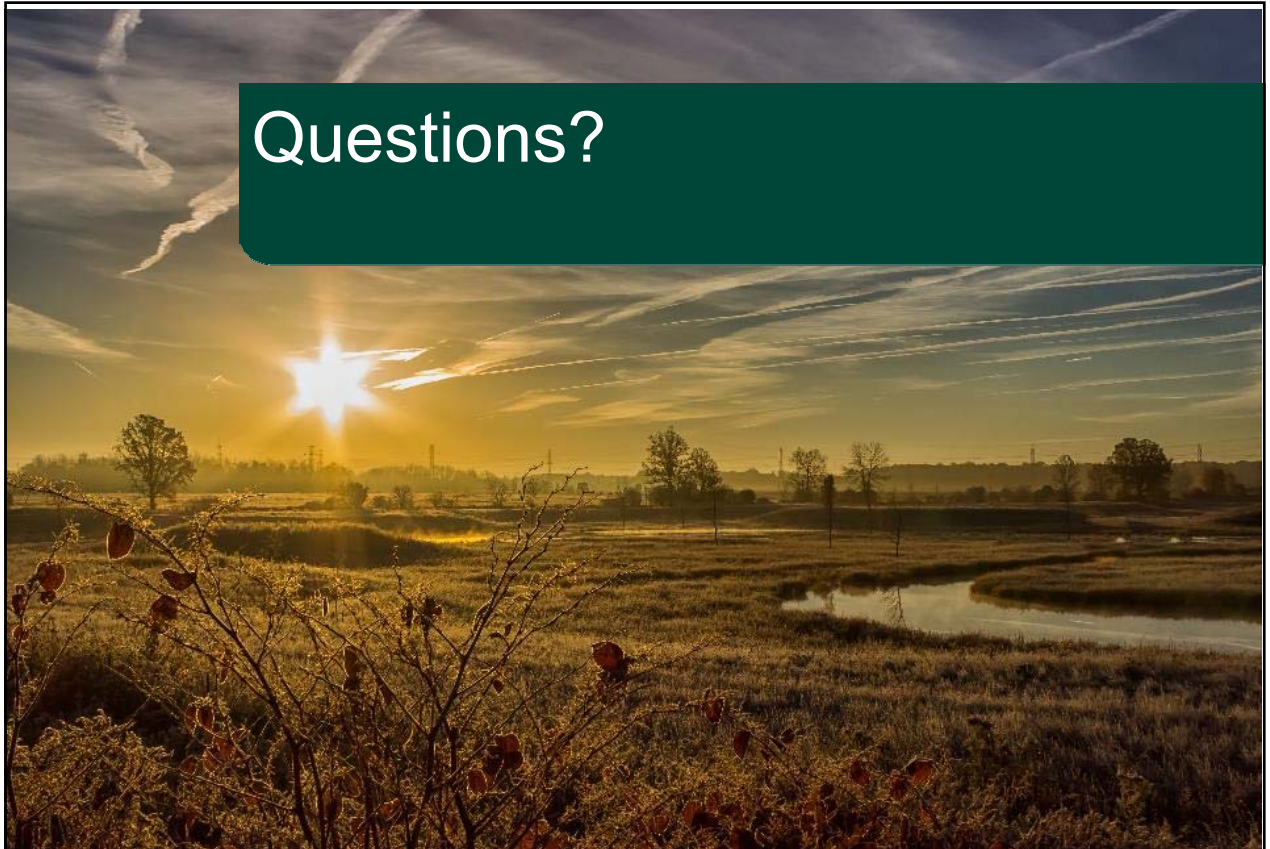
#### **Q2/Q3 2020:**

- UTRCA to present Regulatory Floodplain Update to Planning and Environment Committee
- City to commence Dingman Creek Stage 2 EA and recommence Stakeholder Group



## Item 2.6

Questions?



<https://getinvolved.london.ca/DingmanCreek>