

Bill No. 69
2020

By-law No. S.-____-____

A by-law to assume certain works and services
in the City of London. (Westfield Subdivision,
Phase 1; Plan 33M-700)

WHEREAS the Managing Director, Environmental & Engineering Services
and City Engineer of The Corporation of the City of London has reported that works and
services have been constructed to her satisfaction in Westfield Subdivision Phase 1;

AND WHEREAS it is deemed expedient to assume the said works and
services;

NOW THEREFORE the Municipal Council of The Corporation of the City
of London enacts as follows:

1. The Corporation of the City of London assumes the following works and
services, namely:

Westfield Subdivision, Phase 1; Plan 33M-700
Kenmore Homes (London) Inc. – Jim Kaufman

Emma Chase – All
Finley Crescent – All
Noah Bend – All
Blocks 59 & 60 – Parkland

2. The warranty period for the works and services in the subdivision referred
to in Section 1 of this by-law is for the period of December 18, 2019 to December 19,
2020.

3. This by-law comes into force and effect on the day it is passed.

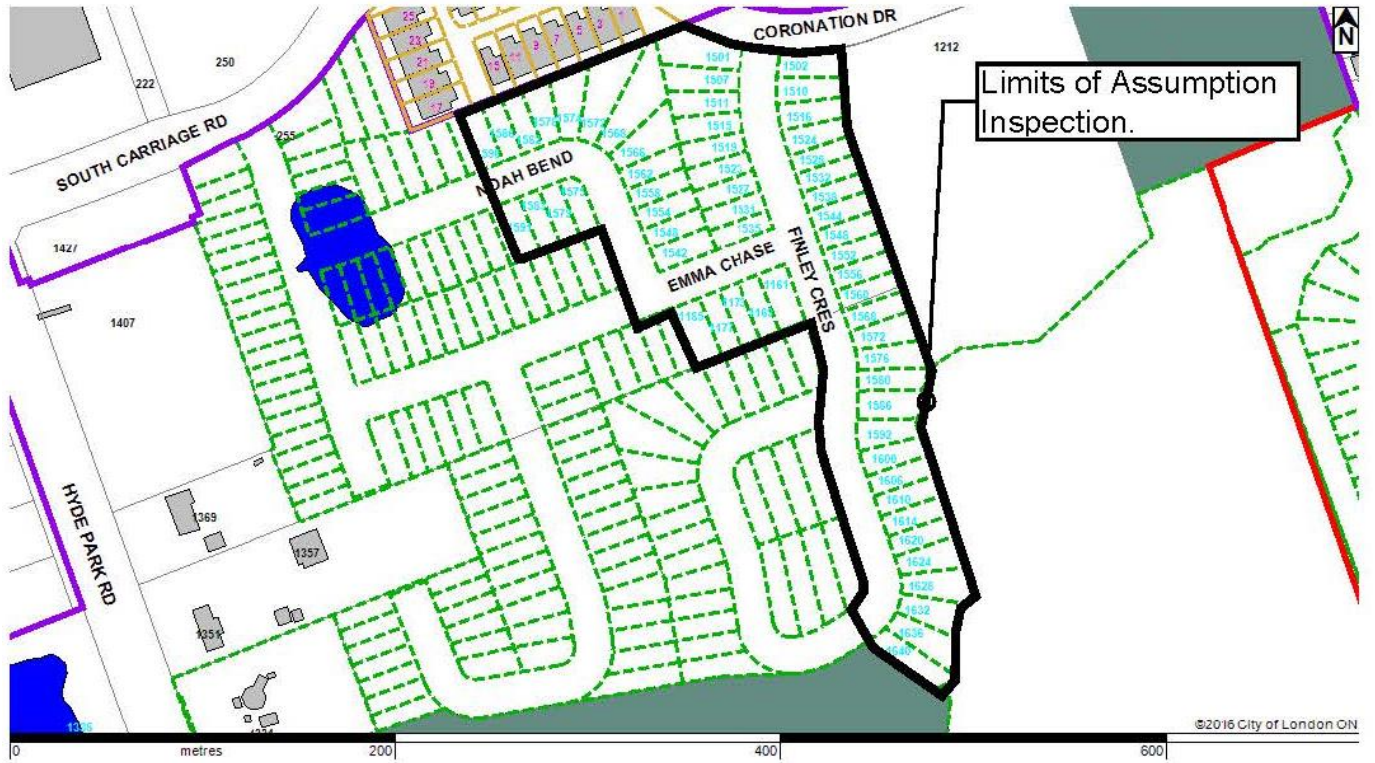
PASSED in Open Council on January 28, 2020.

Ed Holder
Mayor

Catharine Saunders
City Clerk

First Reading – January 28, 2020
Second Reading – January 28, 2020
Third Reading – January 28, 2020

Assumption Limits



33M-700 - Bierens (Westfield) Subdivision
Conditional Approval Inspection Limits
Emma Chase - All;
Finley Place - All;
Noah Bend - All;
Blocks 59 & 60 - Parkland;
External Works - Coronation Drive - All;