



# Churchill Avenue and Winnipeg Boulevard Reconstruction

Accessibility Advisory Committee Presentation  
November 28, 2019



London  
CANADA

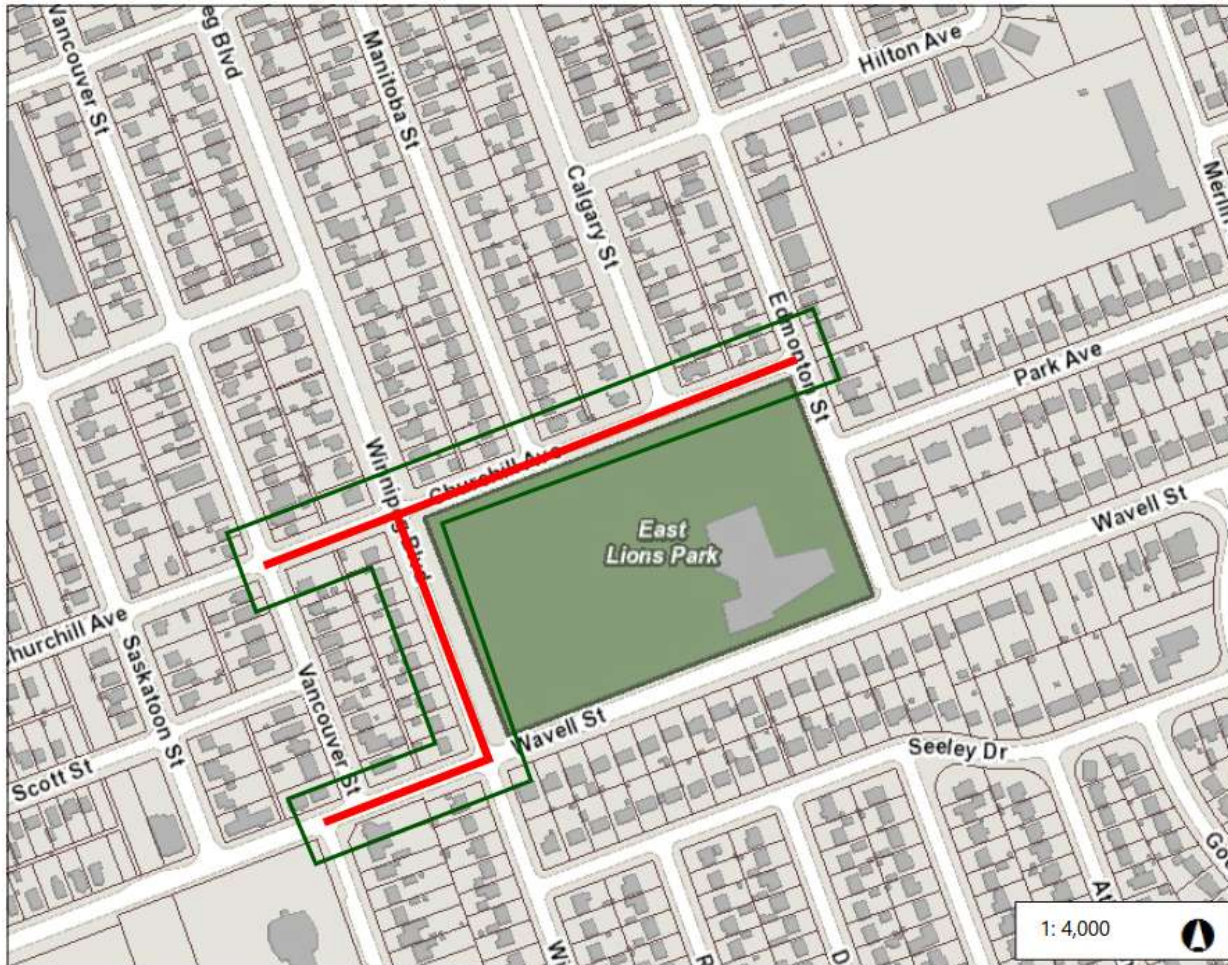


# AGENDA



- 1. EAST LIONS PARK PROJECT UPDATE**
- 2. ROAD PROJECT OVERVIEW**
- 3. RECOMMENDED DESIGN**
- 4. NEXT STEPS**
- 5. QUESTIONS**

# PROJECT OVERVIEW



## Legend

-  Project Extents
-  Street Limits

The Project Extents includes the following:

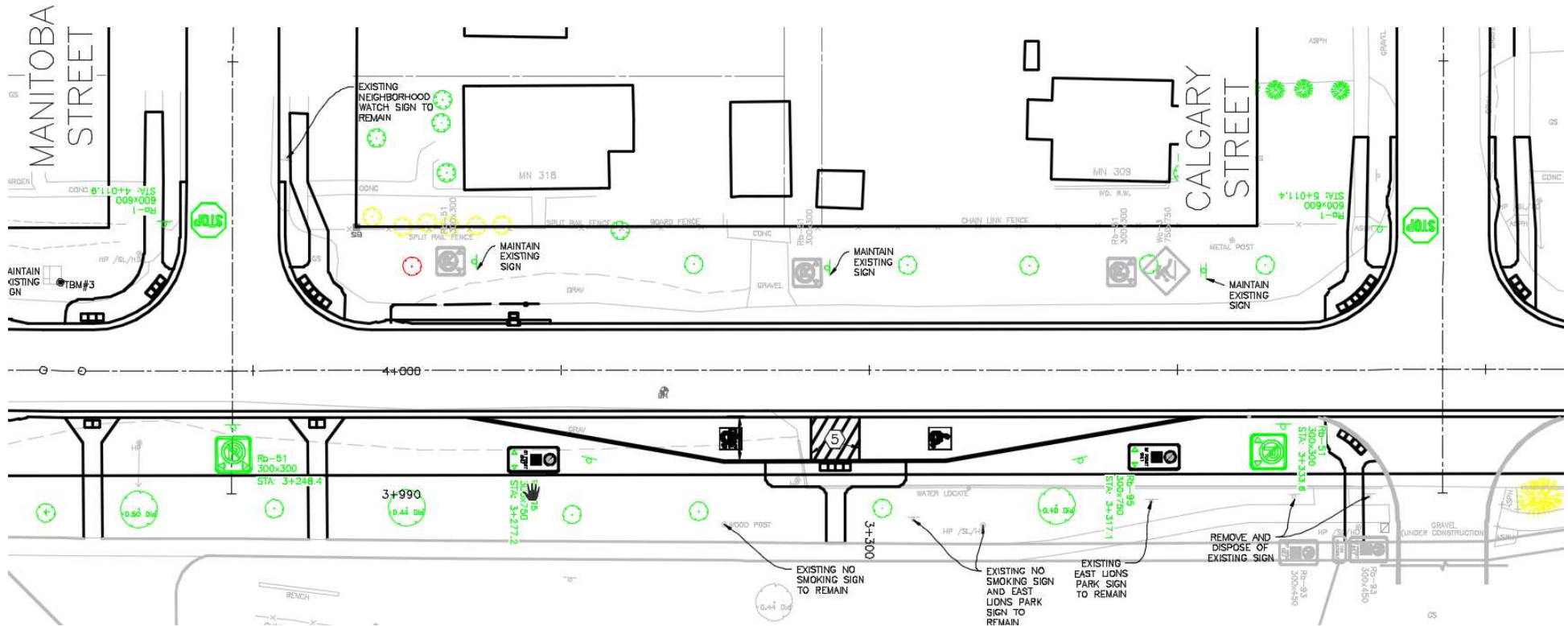
- Wavell Street – Vancouver Street to Winnipeg Boulevard
- Winnipeg Boulevard – Churchill Avenue to Wavell Street
- Churchill Avenue – Vancouver Street to Edmonton Street

Intersections included are:

- Wavell @ Vancouver, Winnipeg
- Winnipeg @ Churchill
- Churchill @ Vancouver, Manitoba, Calgary, Edmonton

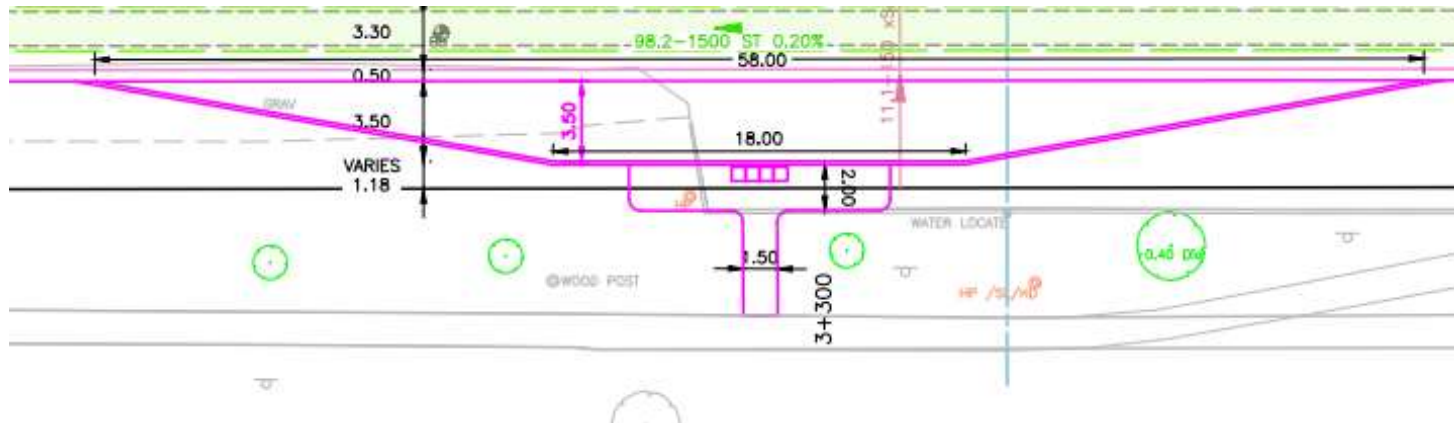


# ACCESSIBILITY DROP OFF AREA/PARKING



November 28, 2019

# ACCESSIBILITY DROP OFF AREA/PARKING

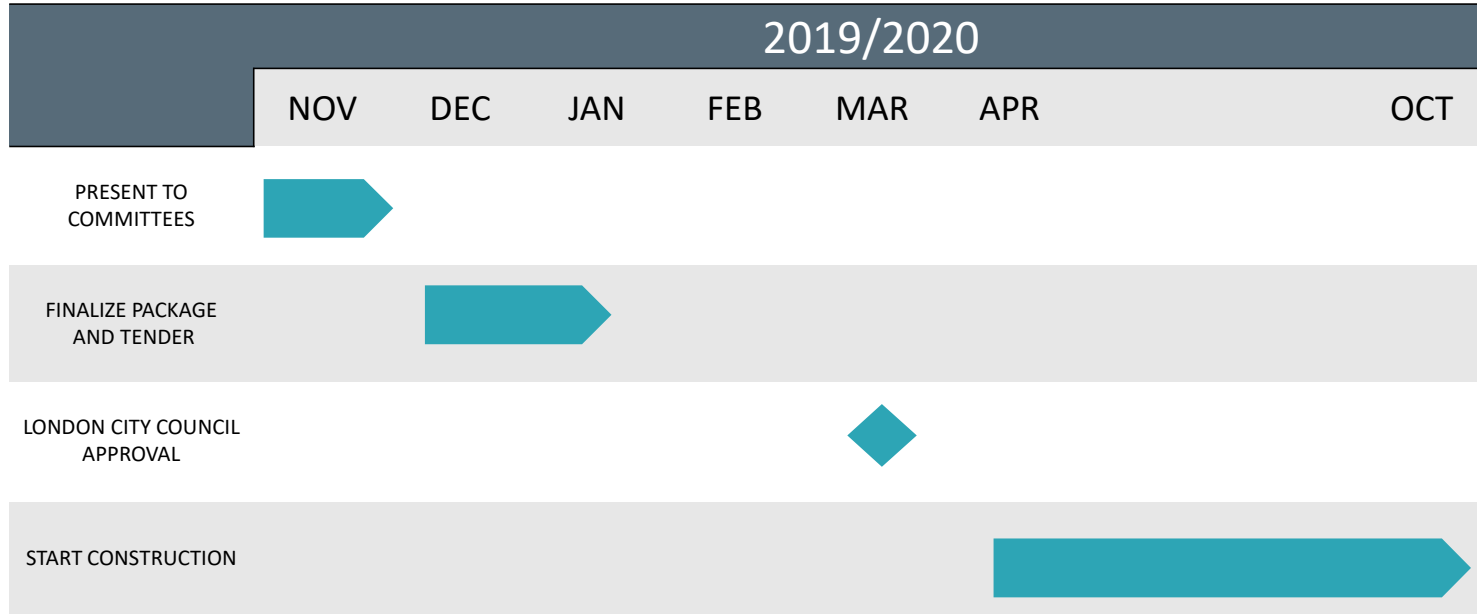


# ACCESSIBILITY DROP OFF AREA/PARKING



November 28, 2019

# NEXT STEPS



**THANK YOU FOR  
THE  
OPPORTUNITY TO  
PRESENT**



# Questions?

November 28, 2019



# EAST LIONS PARK



## LEGEND

1. TENNIS COURT
2. PICKLEBALL COURTS
3. BASKETBALL & ICE RINK
4. SOCCER FIELD
5. PING PONG TABLE
6. RAIN GARDEN
7. LOUNGE CHAIRS
8. BOARDWALK & LOOKOUT
9. BERM
10. TERRACED SEATING
11. PLAYER BENCHES
12. PICNIC TABLES
13. PLAYGROUND
14. ART SCULPTURE
15. BUS STOP
16. PEDESTRIAN CROSSING
17. FIELD LIGHTING

*Lights to be turned off by 11pm  
Please note: this is a conceptual design.  
Final locations may vary.*

### CONTACT INFORMATION

Eric Conway, Project Coordinator  
519-661-2489 ext. 4288  
elconway@london.ca

CONCEPTUAL DESIGN BY:

**MJMA &** **a+LINK**  
architecture inc.  
preserve • create • sustain

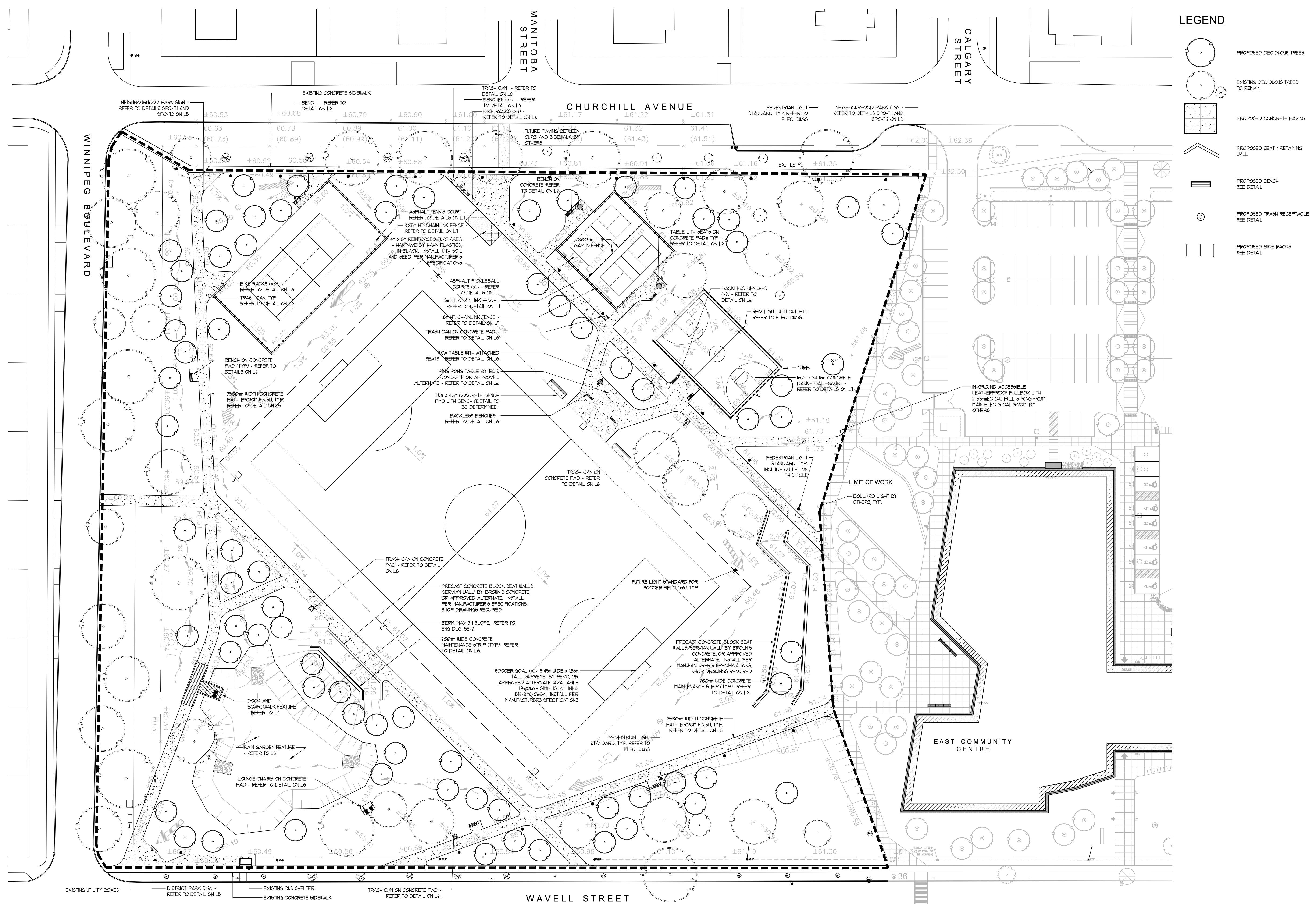
DETAILED DESIGN BY:

RON KOUDYS  
LANDSCAPE  
ARCHITECTS



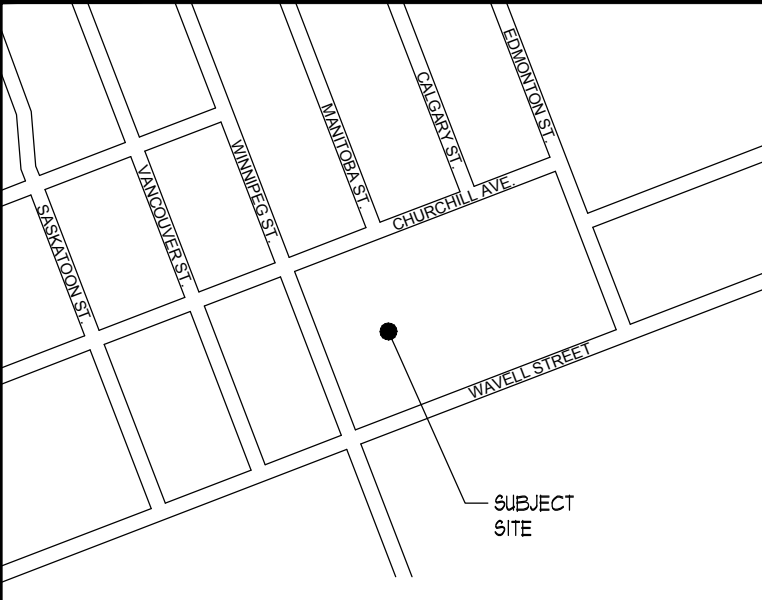
London  
CANADA





**LEGEND**

- PROPOSED DECIDUOUS TREES
- EXISTING DECIDUOUS TREES TO REMAIN
- PROPOSED CONCRETE PAVING
- PROPOSED SEAT / RETAINING WALL
- PROPOSED BENCH SEE DETAIL
- PROPOSED TRASH RECEPTACLE SEE DETAIL
- PROPOSED BIKE RACKS SEE DETAIL



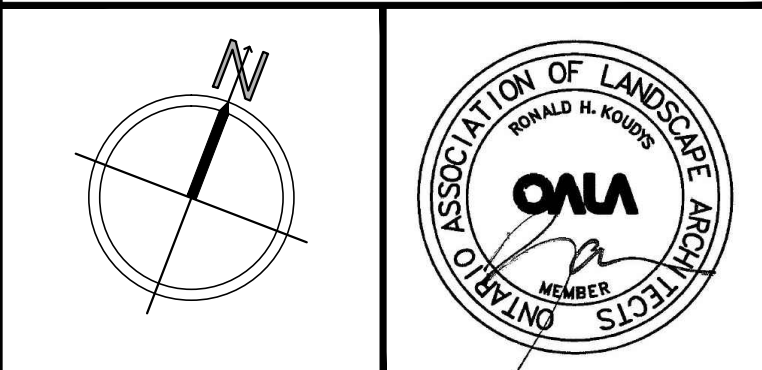
ALL DRAWINGS REMAIN THE PROPERTY OF THE LANDSCAPE ARCHITECT AND SHALL NOT BE REPRODUCED OR REUSED WITHOUT THE LANDSCAPE ARCHITECTS WRITTEN PERMISSION.

THIS DRAWING SHALL NOT BE USED FOR CONSTRUCTION OR TENDER PURPOSES UNLESS SIGNED AND DATED BY RONALD H. KOUDYS, O.A.L.A. C.S.L.A., LANDSCAPE ARCHITECT, LONDON, ONTARIO (519) 667-3322.

Ronald H. Koudys, O.A.L.A. C.S.L.A. SEPT. 24, 2019  
DATE

DATE	DESCRIPTION	No.
SEPT. 24, 2019	ISSUED FOR CONSTRUCTION	10.
JUNE 5, 2019	ISSUED FOR TENDER	9.
MAY 23, 2019	ISSUED FOR REVIEW	8.
MAY 2, 2019	30% DD SUBMISSION	7.
MAR. 14, 2019	ISSUED FOR REVIEW	6.
MAR. 5, 2019	ISSUED FOR REVIEW	5.
FEB. 21, 2019	60% SUBMISSION - FINAL	4.
FEB. 11, 2019	60% SUBMISSION	3.
JAN. 18, 2019	ISSUED FOR REVIEW	2.
DEC. 19, 2018	ISSUED FOR REVIEW	1.

PLOTTING INFORMATION:  
 PLOTTED DATE - JUNE 5, 2019  
 PLOTTED SCALE - 1:1



PROJECT TITLE:  
**EAST LIONS PARK**  
 1731 CHURCHILL AVENUE  
 LONDON, ONTARIO

DRAWING TITLE:  
**SITE PLAN**

DATE: NOVEMBER 2018	SCALE: AS NOTED	DRAWING No. <b>L-1</b>
DRAWN: RKL/A Inc.	CHECKED BY: RHK	
PROJECT No. 18-249 LT		

**SITE PLAN**  
SCALE = 1:400