

# You, Your Dog, and Nature in London



A guide to help you and your dog enjoy and protect nature in London

**Your dog must be on a leash (max. 1.8m/6ft) at all times.**

Parks and Recreation Area By-law PR-2,  
and the Dog Licensing and Control By-law PH-4



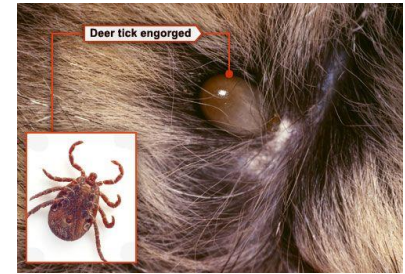
**Natural areas, including Environmentally Significant Areas (ESAs), need to be protected by minimizing human and pet disturbance.**

**For the safety of wildlife, visitors and your pet:**

- Keep your dog on a leash at all times.
- Stay on marked trails.
- Dispose of all pet waste in garbage bins or carry it out.
- Be aware of dangers such as vehicles, other animals, ill-willed individuals, traps and snares, toxic products, algae blooms, poisons, sick animals, parasites, rabies, distemper and other diseases.

## Ticks and Lyme Disease

There is a possibility of encountering infected ticks in almost all wooded or brushy areas in Ontario, including London.



## Wild Animals

- A wide variety of mammals, birds, reptiles, and amphibians call our urban neighbourhoods and ESA's home. Almost all conflict situations between wildlife and dogs occur when dogs are off-leash.
- Coyotes and other wildlife are highly protective of family members and perceive dogs as a threat, especially near their nesting/den sites or established territory.
- Coyotes may 'escort' or 'shadow' a dog walker out of an area when coyote pups or a den are nearby.
- Birds of prey may perceive small dogs as a potential food source.
- Off leash dogs may injure, orphan or separate wildlife offspring from their family.
- The mere presence of your dog can disrupt the feeding, foraging, mating, denning, and nesting of rare and endangered birds and animals.
- Wildlife expend vital energy reserved for survival when chased by dogs.

## Plants

- Dogs may run, roll, or dig through natural areas. Your dog may damage or destroy rare and endangered plant species. Many plants can also seriously harm or kill your dog. Some include:  
Poison Oak                      Poison Ivy  
Poison Sumac                  Giant Hogweed

## Safety Tips

- Always obey by-laws or ordinances that apply to the wild spaces you visit.
- Be aware of the wildlife in areas where you walk your family pets.
- Keep a respectful distance from wildlife.
- Never feed wildlife; this includes indirect feeding, such as leaving food waste in wild spaces. Feeding wildlife disrupts natural foraging behaviors and encourages an unnatural proximity tolerance to people.
- If a coyote is nearby, small dogs can be lifted and carried for safety. Never run; leave the area slowly, keeping your dog close to you.



## There are 5 off-leash dog parks in London:

- Campbell Memorial Park
- Pottersburg Park
- Stoney Creek Park
- Greenway Park
- Caesar Park

## Need More Information?

City of London  
519-661-2489  
[www.london.ca](http://www.london.ca)

- City Planning
- Feeding of Wildlife Regulations Public Nuisance By-law PH-18
- Coyotes In The City of London

Middlesex London Health Unit  
(519) 663-5317  
<https://www.healthunit.com/lyme-disease>

Upper Thames River Conservation Authority  
519-451-2800 ext. 281  
[www.thamesriver.on.ca](http://www.thamesriver.on.ca)

London Animal Care Centre  
(PH-4 By-law Enforcement)  
519-685-1330  
[www.accpets.ca](http://www.accpets.ca)

London Dog Owners' Association  
[www.ldoa.ca](http://www.ldoa.ca)

London Humane Society  
519-451-0630



*Prepared by the Environmental and Ecological Planning Advisory (EEPAC) and the Animal Welfare Advisory Committee (AWAC) of the City of London, and with support from the London Dog Owners' Association.*  
©2019