

Figure 1
White Oak-Dingman Secondary Plan SLSR
Study Area Overview - Natural Heritage



LEGEND

- Utility Line
- Road
- Watercourse
- Subject Lands
- 'Big Picture' Meta-Corridors (City of London)
- UTRCA Regulation Limit
- UTRCA Screening Area

Schedule B1 - Natural Heritage Features (1989 Official Plan)

Map 5 - Natural Heritage (The London Plan)

- Potential Naturalization Areas
- Upland Corridor
- Unevaluated Vegetation Patch
- Unevaluated Wetland
- Potential ESAs
- Significant Woodland
- Significant Valleylands
- Valleylands

Scale: 1:10,000

Parsons Job No: _____
 Date: 7/4/2019
 Filed By: M.E.

Data Sources: Parsons; City of London Geospatial Data from Official Plan, Ontario Ministry of Natural Resources and Forestry; Ontario Ministry of Transportation; Fisheries and Oceans Canada; Bing Imagery

PARSONS

1069 Wellington Rd S Suite 214
 London, Ontario N6E 2H6
 519-286-5509

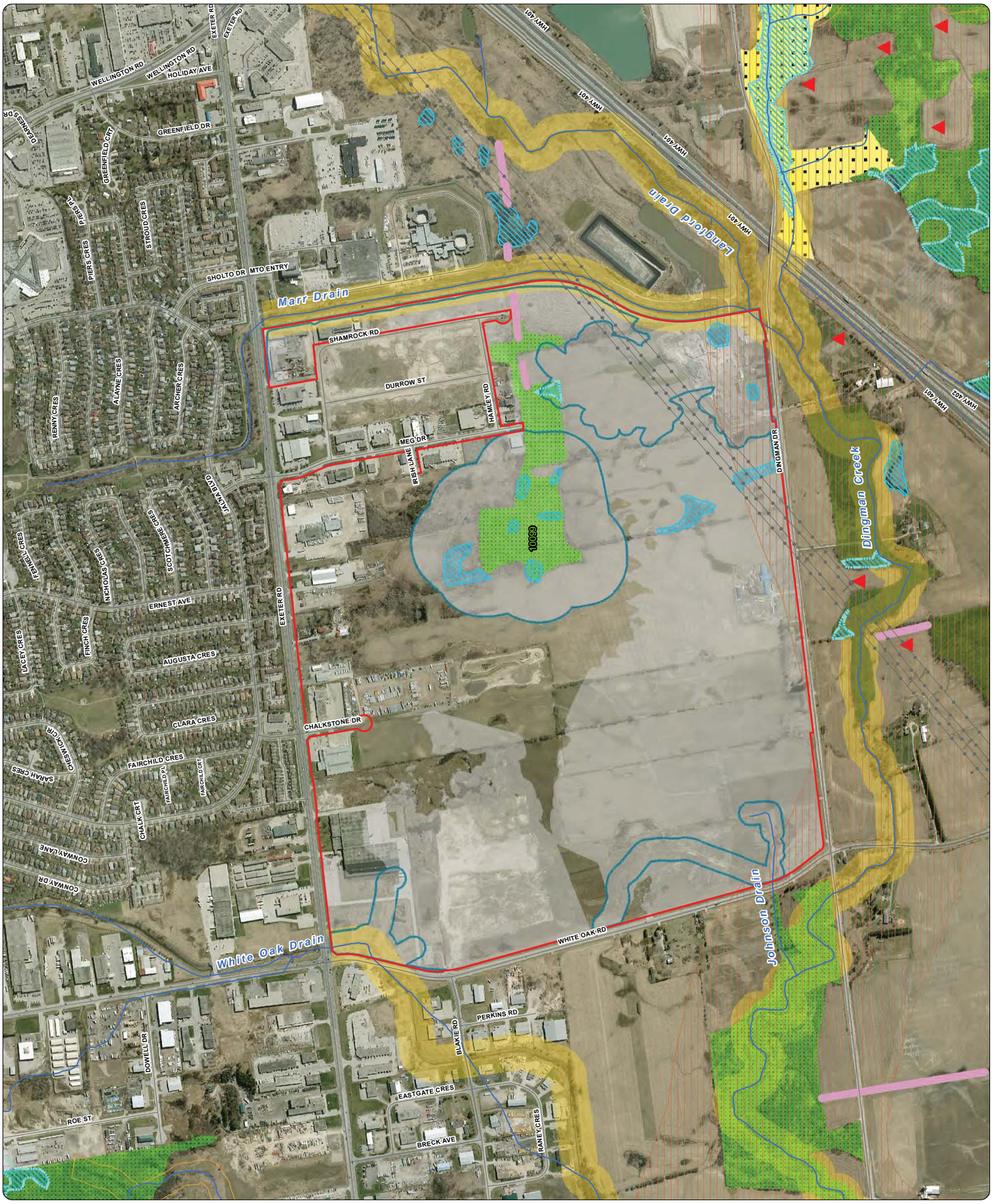


Figure 2
White Oak-Dingman Secondary Plan SLSR
Place Types



LEGEND

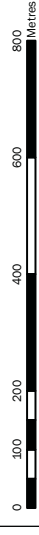
- Road
- Utility Line
- Watercourse
- Subject Lands

Map 1 - Place Types (The London Plan)

- Urban Growth Boundary
- Commercial Industrial
- Environmental Review
- Farmland
- Future Community Growth
- Future Industrial Growth
- Institutional
- Light Industrial
- Neighbourhood
- Open Space
- Shopping Area
- Water

Scale:

1:10,000



Parsons Job No:

Date:

Drawn By:

File No:

Scale:

Data Sources: Parsons; City of London Geospatial Data from Official Plan, Ontario Ministry of Natural Resources and Forestry; Ontario Ministry of Transportation; Fisheries and Oceans Canada; Bing Imagery



1069 Wellington Rd S Suite 214
London, Ontario N6E 2H6
519-286-5509

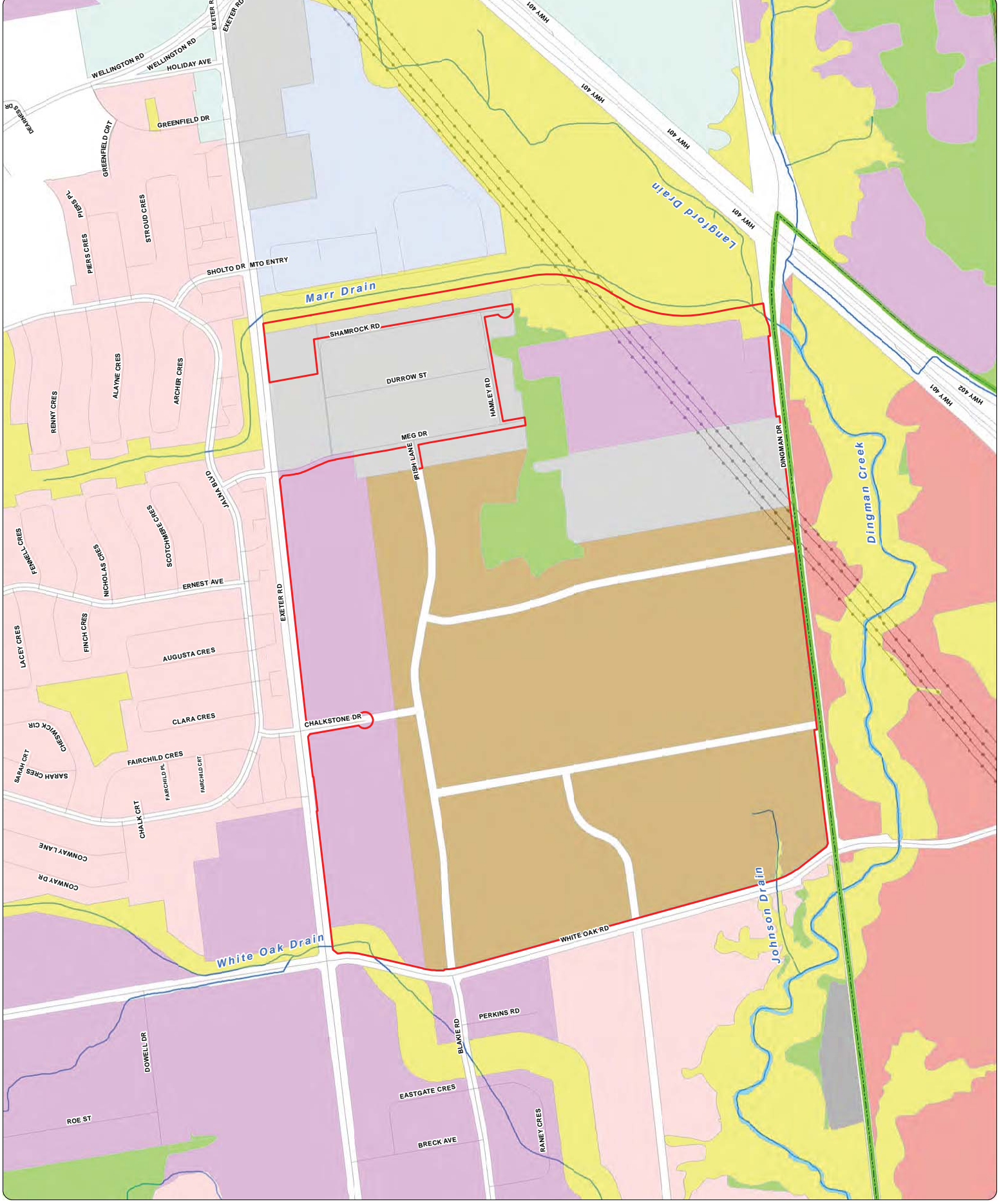
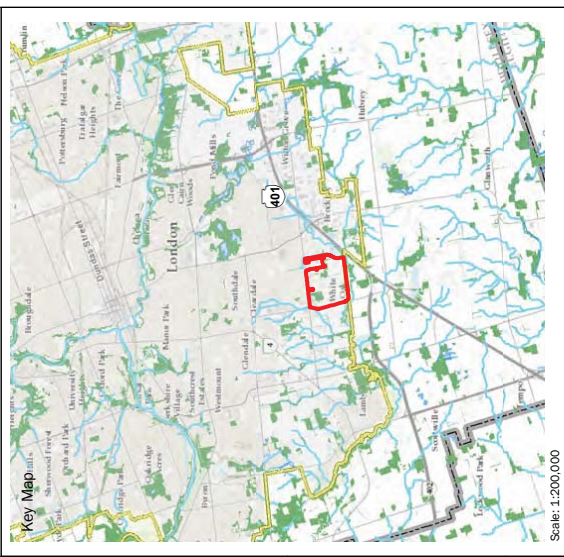


Figure 5
White Oak-Dingman Secondary Plan SLSR
Vegetation Communities



LEGEND

- Fish Habitat
- Watercourse
- Parcel
- Subject Lands
- Road
- Utility Line

Vegetation Communities

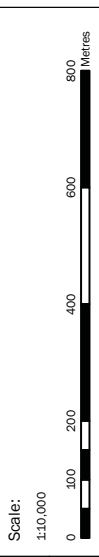
- Hedgerow (HDG)
- Meadow (CUM1)
- Meadow/Thicket (CUM1/CUT1)
- Thicket (CUT1)

Wetlands

- Open Water Aquatic (OAO)
- Meadow Marsh (MAM)
- Deciduous Thicket (SWT)
- Deciduous Swamp (SWD)
- SWD / MAM

Wetlands

- Cultural Woodland (CUW1)
- Deciduous Woodland (FOD)
- Lowland Deciduous Forest (FOD7)
- Poplar Deciduous Forest (FOD8-1)



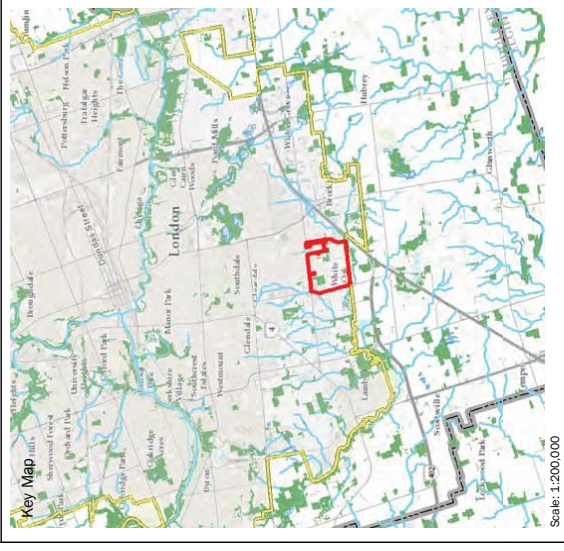
Parsons Job No:	Date:	7/4/2019	Prepared By:	M.E.
-----------------	-------	----------	--------------	------

Data Sources: Parsons; Ontario Ministry of Natural Resources and Forestry; Ontario Ministry of Transportation; Fisheries and Oceans Canada; Bing Imagery

1069 Wellington Rd S Suite 214
 London, Ontario N6E 2H6
 519-286-5509



Figure 7
White Oak-Dingman Secondary Plan SLSR
Significant Woodland Boundary Delineation



LEGEND

- Fish Habitat - Intermittent / Ephemeral
- Fish Habitat - Permanent
- Road
- Utility Line
- Significant Woodland Boundary (Proposed)
- Subject Lands
- Evaluated Wetland - Not Significant

Scale:

1:10,000



Parsons Job No:	Date:	Final By:
	7/4/2019	M.E.

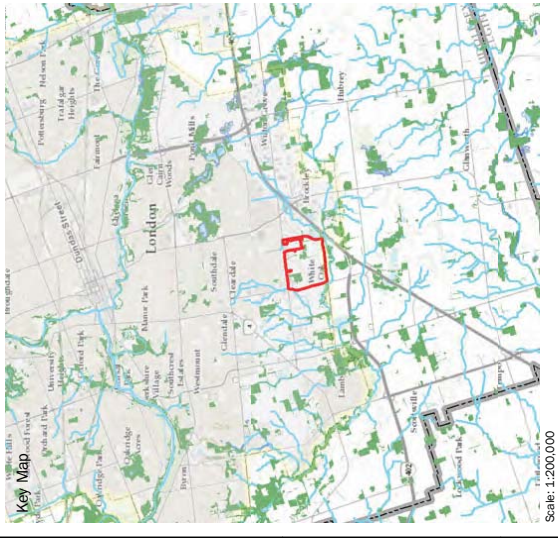
Data Sources: Parsons; City of London; Geospatial Data from Official Plan, Ontario Ministry of Natural Resources and Forestry; Ontario Ministry of Transportation; Fisheries and Oceans Canada; Bing Imagery



1069 Wellington Rd S Suite 214
 London, Ontario N6E 2H6
 519-286-5509



Figure 8
White Oak-Dingman Secondary Plan SLR
Wetlands

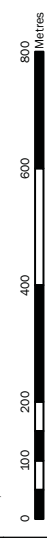


LEGEND

- Fish Habitat - Intermittent / Ephemeral
 - Fish Habitat - Permanent
 - Road
 - Utility
 - Evaluated Vegetation Patch# 10099 / Significant Woodland
 - Subject Lands
 - Unevaluated Wetland - Field Verified
 - Unevaluated Wetland (Map 5 The London Plan) - Not Field Verified
 - Unevaluated Wetland (1989 Official Plan) - Not Field Verified
 - UTRCA Regulation Limit
- Wetland Evaluation Results**
- Evaluated Wetland - Not Significant

Scale:

1:10,000



Parsons Job No:

Date:
7/4/2019

Drawn By:
ME



Data Sources: Parsons; Ontario Ministry of Natural Resources and Forestry; Ontario Ministry of Transportation; Fisheries and Oceans Canada; Bing Imagery



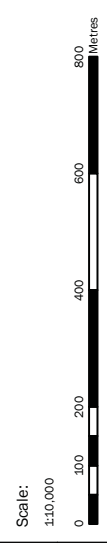
1069 Wellington Rd S Suite 214
London, Ontario N6E 2H6
519-286-5509



Figure 10
White Oak-Dingman Secondary Plan SLSR
Species at Risk



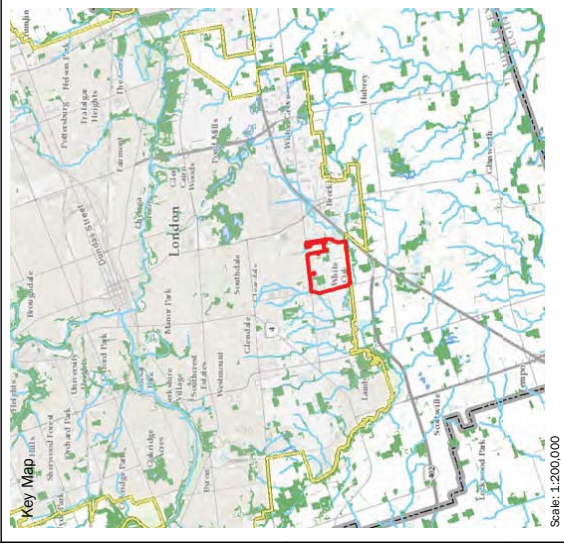
- LEGEND**
- Fish Habitat
 - Road
 - Utility Line
 - Subject Lands
 - Significant Woodland
 - Habitat for Eastern Meadowlark (Threatened)



Parsons Job No:	Date: 7/4/2019	Prepared By: M.E.
Data Sources: Parsons; City of London; Geospatial Data from Official Plan, Ontario Ministry of Natural Resources and Forestry; Ontario Ministry of Transportation; Fisheries and Oceans Canada; Bing Imagery		



Figure 11
White Oak-Dingman Secondary Plan SLSR
Natural Heritage Opportunities



LEGEND

- Fish Habitat
 - Road
 - Utility Line
 - Subject Lands
 - Significant Woodland
 - Wetland
- Habitat Creation**
- Potential Wetland Creation/Restoration Area
- Linkages and Corridors**
- Potential Drain/Swale/Realignment/Restoration
 - Upland Corridor (Map 5 - The London Plan)
 - 'Big Picture' Meta-Corridors (City of London)
 - Significant Valleylands (Map 5 - The London Plan)

Scale:

1:10,000



Parsons Job No:

Date:

Drawn By:

ME

Data Sources: Parsons; City of London; Geospatial Data from Official Plan; Ontario Ministry of Natural Resources and Forestry; Ontario Ministry of Transportation; Fisheries and Oceans Canada; Bing Imagery



1069 Wellington Rd S Suite 214
 London, Ontario N6E 2H6
 519-286-5509

