

Environmental and Ecological Planning Advisory Committee

Report

The 11th Meeting of the Environmental and Ecological Planning Advisory Committee
October 17, 2019
Committee Rooms #1 and #2

Attendance PRESENT: S. Levin (Chair), E. Arellano, I. Arturo, L. Banks, A. Bilson Darko, A. Boyer, R. Doyle, S. Esan, P. Ferguson, L. Grieves, S. Hall, S. Heuchan, B. Krichker, I. Mohamed, K. Moser, B. Samuels, S. Sivakumar, R. Trudeau, M. Wallace and I. Whiteside and H. Lysynski (Secretary)

ABSENT: A. Cleaver, C. Dyck and J. Khan

ALSO PRESENT: G. Barrett, C. Creighton, M. Fabro, H. McNeely, S. Hudson, T. Macbeth, J. MacKay, L. Maitland and B. Page

The meeting was called to order at 5:00 PM.

1. Call to Order

1.1 Disclosures of Pecuniary Interest

That it BE NOTED that no pecuniary interests were disclosed.

2. Scheduled Items

2.1 Bruce Page, Senior Planner - Byron Gravel Pit Secondary Plan

That a Working Group BE ESTABLISHED consisting of R. Trudeau (lead), I. Arturo, A. Bilson Darko and S. Hall with respect to the Bryon Gravel Pit Secondary Plan; it being noted that the Environmental and Ecological Planning Advisory Committee heard the attached presentation from B. Page, Senior Planner, with respect to this matter.

2.2 Tricia Lystar, Chair, Animal Welfare Advisory Committee - Proposed Changes to the "You, Your Dog and ESAs" Brochure

That, the following actions be taken with respect to the proposed "You, Your Dog and ESAs" brochure:

a) the attached "You, Your Dog and ESAs" brochure BE APPROVED for printing and circulation; it being noted that two of the photographs will be replaced prior to printing; and,

b) it BE NOTED that the Environmental and Ecological Planning Advisory Committee heard a verbal presentation from T. Lystar, Chair, Animal Welfare Advisory Committee, with respect to the proposed changes to the above-noted brochure.

2.3 6:00 PM Leif Maitland, Planner I, James MacKay, Ecologist and Heather McNeely, Manager, Development Services - Bird Friendly Guidelines

That it BE NOTED that the Environmental and Ecological Planning Advisory Committee heard the attached presentation from L. Maitland, Planner I, J. MacKay, Ecologist Planner and H. McNeely, Manager, Development Services, with respect to Bird Friendly Guidelines.

3. Consent

3.1 10th Report of the Environmental and Ecological Planning Advisory Committee

That it BE NOTED that the 10th Report of the Environmental and Ecological Planning Advisory Committee, from its meeting held on September 19, 2019, was received.

4. Sub-Committees and Working Groups

4.1 White Oak-Dingman Subject Land Status Report

That the following actions be taken with respect to the White-Oak Dingman Secondary Plan Draft Lands Status Report and the White Oak-Dingman Environmental Assessment:

a) the White-Oak Dingman Secondary Plan Draft Lands Status Report Working Group comments BE FORWARDED to the Civic Administration for consideration; and,

b) it BE NOTED that a Notice of Public Information Centre #2 relating to the Dingman Drive East of Wellington Road to Highway 401 and Area Intersections Municipal Class Environmental Assessment, was received;

it being noted that the Environmental and Ecological Planning Advisory Committee received the attached maps from S. Levin.

5. Items for Discussion

5.1 Notice of Planning Application - Zoning By-law Amendment - 21 Norlan Avenue

That it BE NOTED that a Notice of Planning Application dated September 18, 2019, from C. Parker, Senior Planner, with respect to the application by The Corporation of the City of London, relating to the property located at 21 Norlan Avenue, was received.

5.2 Environmental Management Guidelines Response

That it BE NOTED that the Environmental and Ecological Planning Advisory Committee held a general discussion with respect to the Environmental Management Guidelines Working Group report.

5.3 Notice of Public Information Centre - Veterans Memorial Parkway Extension - Huron Street to Clarke Road - Detailed Design and Construction

That it BE NOTED that a Notice of Public Information Centre for the Veteran's Memorial Parkway extension from Huron Street to Clarke Road, Detailed Design Construction, was received.

5.4 Notice of Public Meeting - Killy South, East Basin, Municipal Class Environmental Assessment

That it BE NOTED that a Notice of Public Meeting for the Killy South, East Basin, Municipal Class Environmental Assessment, was received.

6. Adjournment

The meeting adjourned at 6:57 PM.



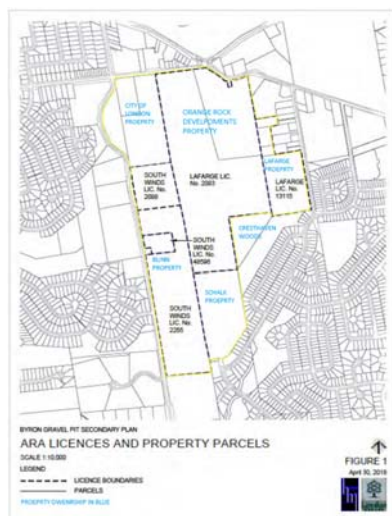
Byron Gravel Pit Secondary Plan

Making outstanding communities

london.ca



Byron Gravel Pit



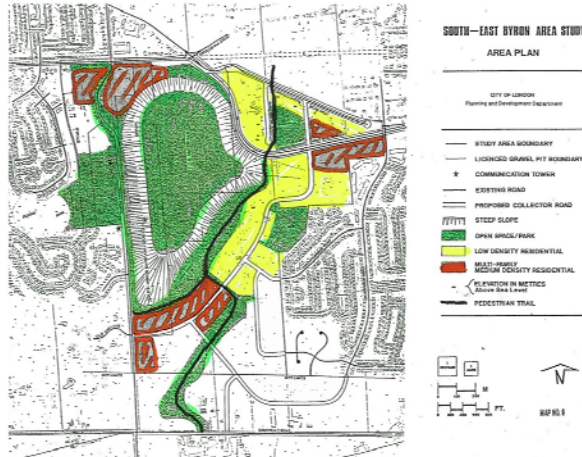
- ❑ Southwest portion of the City
- ❑ 71 ha
- ❑ Comprised of 14 properties, 6 landowners and 2 operators

london.ca



Byron Gravel Pit Why now?

- Pit extraction nearing completion
- Apply land use designations
- Determine recreational / open space use
- Commissioners Rd EA



London.ca



Byron Gravel Pit What will it Accomplish



Provide a **secondary plan** for the area that will delineate appropriate land uses,

Provide a **recreational/Open Space plan** for the large central portion of the site.

Provide a **comprehensive rehabilitation plan** to be used by the pit operators to make amendments to the approved plans filed with MNR.

Provide for the Commissioners Road **Environmental Assessment**.

London.ca



Byron Gravel Pit Process

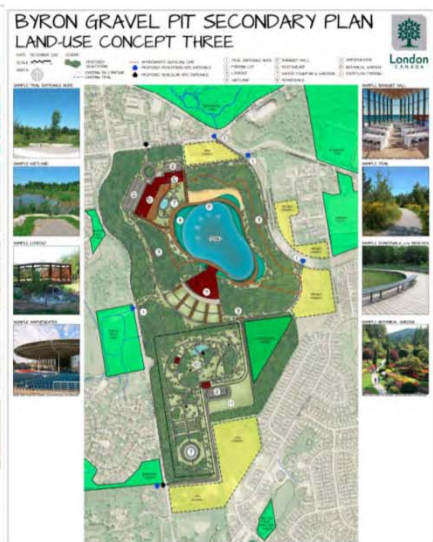
- Vision Session
- Component Studies
- 4 Public Meetings
- Commissioners Rd EA

	BACKGROUND REVIEW
	Initial Scan of Opportunities & Constraints in Study Area
	Review of Studies and Site Characteristics
	What is possible? What is not possible?
	local and Regional demand assessment based on Opportunities & Constraints
	Landowner outreach
	COMPONENT REVIEWS
CONSULT	traffic/transportation
	water and sanitary
	natural environment
	VISIONING EXERCISE
CONSULT	
	DEVELOPMENT AND EVALUATION OF OPTIONS
CONSULT	
	LAND USE CONCEPT PLAN
CONSULT	
	DRAFT SECONDARY PLAN
	FINAL SECONDARY PLAN

London.ca



Where we are

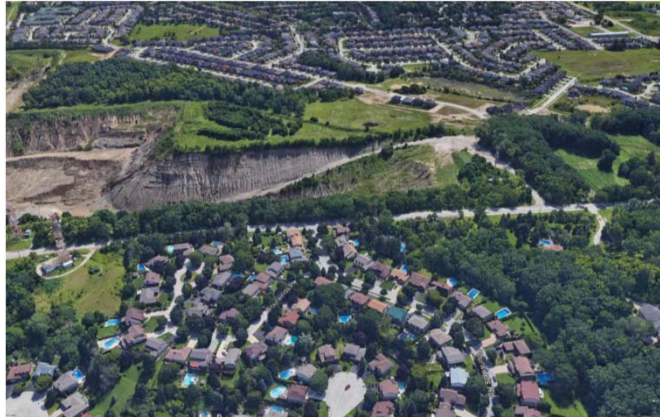


London.ca



Component Studies

- Subject Land Status Report completed by AWS Environmental Consultants
- Report has been reviewed by staff
- Unique SLSR based on rehabilitation of the gravel pit
- Opportunity for EPPAC to review



London.ca



Findings

- Small wetland features starting to develop in portions of the pond area.
- Portions of the site outside of the active gravel pit contain woodlands and significant woodlands
- Steep face slopes have provided habitat for bank swallows
- Possible monarch butterfly habitat
- Limit natural heritage resulting from aggregate extraction



Figure No. 7. SLSR, Recommended Significant Woodlands

london.ca



Recommendations

- Bank Swallows have been confirmed – consult with MNRF
- Significant woodlands
 - designate portions of the wooded area
 - evaluate other vegetated lands with development applications
 - plant lands within the gravel pit
- Significant Wildlife Habitat – restoration planting for monarch butterfly
- Candidate Bat Maternity – consider a portion of the site as a bat colony
- EIS – As per OP/London Plan policy require EIS for all developments within the trigger distances of identified or candidate features.



london.ca

You, Your Dog, and Nature in London



A guide to help you and your dog enjoy and protect nature in London

Your dog must be on a leash (max. 1.8m/6ft) at all times.

Parks and Recreation Area By-law PR-2, and the Dog Licensing and Control By-law PH-4



Natural areas, including Environmentally Significant Areas (ESAs), need to be protected by minimizing human and pet disturbance.

For the safety of wildlife, visitors and your pet:

- Keep your dog on a leash at all times.
- Stay on marked trails.
- Dispose of all pet waste in garbage bins or carry it out.
- Be aware of dangers such as vehicles, other animals, ill-willed individuals, traps and snares, toxic products, algae blooms, poisons, sick animals, parasites, rabies, distemper and other diseases.

Wild Animals

- A wide variety of mammals, birds, reptiles, and amphibians call our urban neighbourhoods and ESA's home. Almost all conflict situations between wildlife and dogs occur when dogs are off-leash.
- Coyotes and other wildlife are highly protective of family members and perceive dogs as a threat, especially near their nesting/den sites or established territory.
- Coyotes may 'escort' or 'shadow' a dog walker out of an area when coyote pups or a den are nearby.
- Birds of prey may perceive small dogs as a potential food source.
- Off leash dogs may injure, orphan or separate wildlife offspring from their family.
- The mere presence of your dog can disrupt the feeding, foraging, mating, denning, and nesting of rare and endangered birds and animals.
- Wildlife expend vital energy reserved for survival when chased by dogs.

Plants

- Dogs may run, roll, or dig through natural areas. Your dog may damage or destroy rare and endangered plant species. Many plants can also seriously harm or kill your dog. Some include:
Poison Oak Poison Ivy
Poison Sumac Giant Hogweed

Ticks and Lyme Disease

There is a possibility of encountering infected ticks in almost all wooded or brushy areas in Ontario, including London.



Safety Tips

- Always obey by-laws or ordinances that apply to the wild spaces you visit.
- Be aware of the wildlife in areas where you walk your family pets.
- Keep a respectful distance from wildlife.
- Never feed wildlife; this includes indirect feeding, such as leaving food waste in wild spaces. Feeding wildlife disrupts natural foraging behaviors and encourages an unnatural proximity tolerance to people.
- If a coyote is nearby, small dogs can be lifted and carried for safety. Never run; leave the area slowly, keeping your dog close to you.



Contact Ecologist to obtain the new signage

There are 5 off-leash dog parks in London:

- Campbell Memorial Park
- Pottersburg Park
- Stoney Creek Park
- Greenway Park
- Caesar Park

Need More Information?

City of London
519-661-2489
www.london.ca

- City Planning
- Feeding of Wildlife Regulations Public Nuisance By-law PH-18
- Coyotes In The City of London

Middlesex London Health Unit
(519) 663-5317
<https://www.healthunit.com/lyme-disease>

Upper Thames River Conservation Authority
519-451-2800 ext. 281
www.thamesriver.on.ca

London Animal Care Centre
(PH-4 By-law Enforcement)
519-685-1330
www.accpets.ca

London Dog Owners' Association
www.ldoa.ca

London Humane Society
519-451-0630





Bird Friendly Regulations (and Communications)

EEPAC – October 17, 2019

london.ca



Origin

- EEPAC – ACE – AWAC

london.ca



Identified Measures

- Lighting design
- Glass façade design
- Lighting hours
- Migratory season focus

london.ca



Lighting Design

- Set as an objective
- Full cut-off – Zero up-light as standard

london.ca



Glass Façade Design

- Acceptable approaches
 - UV Glass
 - Patterned or ‘fritted’ glass
 - Film Products and Decals
 - Decorative Grilles and Louvres
 - Fenestration Patterns

london.ca



Scenario	Circulatory Action under new Guidelines
Any building which is 6 storeys or above, that does not meet the Bird-Friendly Criteria	Circulated to both the relevant advisory committees and the City of London’s Ecologist for review
Any non-residential building which is below 6 storeys, that does not meet the Bird Friendly Criteria	Circulated to the City of London’s Ecologist for review
Any building which is within 120m of a Natural Heritage Area	Circulated to the City of London’s Ecologist for comment as part of their normal ecological review of proposals that potentially impact Natural Heritage areas, and expand responsibility to review Bird Friendly criteria as well

london.ca



Lighting Hours/Migratory Season

- No legal enforcement measure
- Use for communication push
- Ties-in with other environmental messaging
- Able to target existing buildings

london.ca

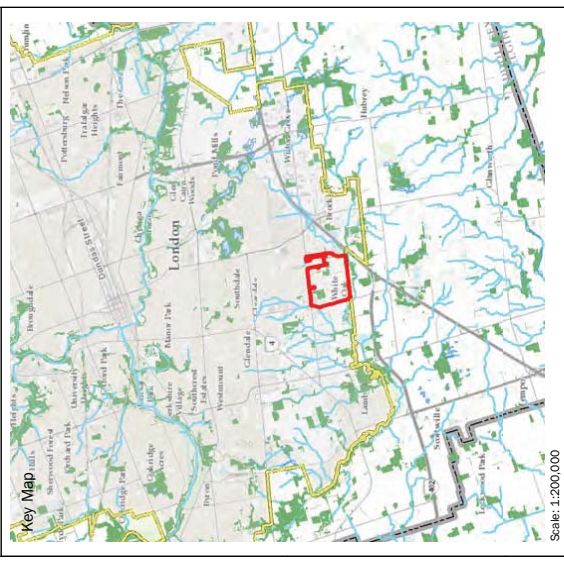


Next Steps

- Site Plan By-law Changes
- Communications approach

london.ca

Figure 1
White Oak-Dingman Secondary Plan SLSR
Study Area Overview - Natural Heritage



LEGEND

- Utility Line
- Road
- Watercourse
- ▭ Subject Lands
- ▭ 'Big Picture' Meta-Corridors (City of London)
- ▭ UTRCA Regulation Limit
- ▭ UTRCA Screening Area

Schedule B1 - Natural Heritage Features (1989 Official Plan)

Map 5 - Natural Heritage (The London Plan)

- ▭ Potential Naturalization Areas
- ▭ Upland Corridor
- ▭ Unevaluated Vegetation Patch
- ▭ Unevaluated Wetland
- ▭ Potential ESAs
- ▭ Significant Woodland
- ▭ Significant Valleylands
- ▭ Valleylands

Scale: 1:10,000

Parsons Job No: _____
 Date: 7/4/2019
 Filed By: M.E.

Data Sources: Parsons; City of London Geospatial Data from Official Plan, Ontario Ministry of Natural Resources and Forestry; Ontario Ministry of Transportation; Fisheries and Oceans Canada; Bing Imagery

PARSONS

1069 Wellington Rd S Suite 214
 London, Ontario N6E 2H6
 519-286-5509

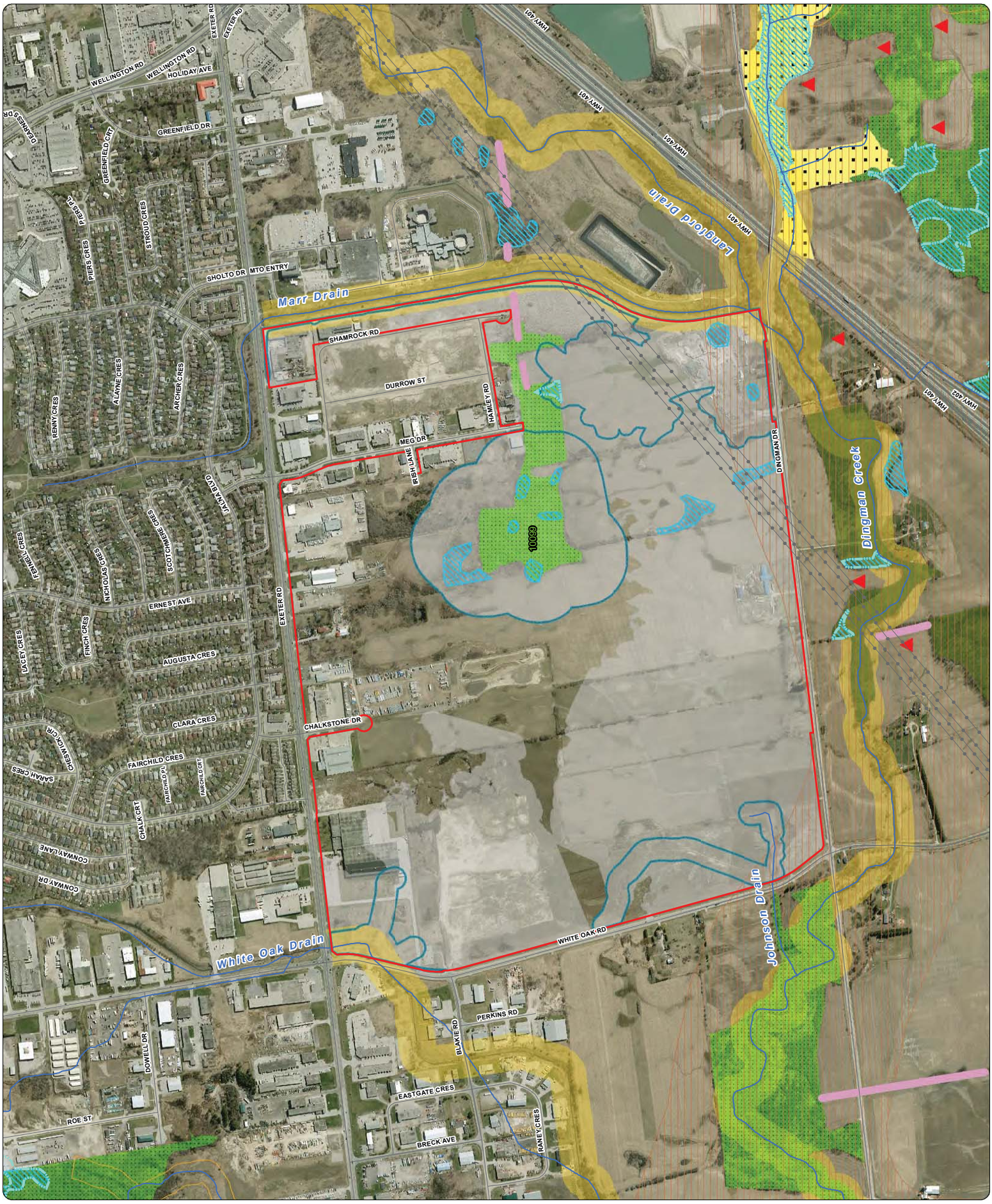
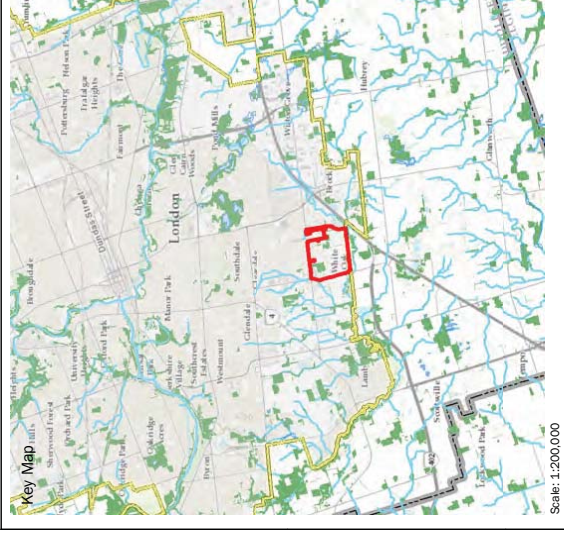


Figure 2
White Oak-Dingman Secondary Plan SLSR
Place Types



LEGEND

- Road
- Utility Line
- Watercourse
- Subject Lands

Map 1 - Place Types (The London Plan)

- Urban Growth Boundary
- Commercial Industrial
- Environmental Review
- Farmland
- Future Community Growth
- Future Industrial Growth
- Institutional
- Light Industrial
- Neighbourhood
- Open Space
- Shopping Area
- Water

Scale:

1:10,000



Parsons Job No:	Date:	Drawn By:
	6/25/2019	M.E.
Data Sources: Parsons; City of London; Geospatial Data from Official Plan, Ontario Ministry of Natural Resources and Forestry; Ontario Ministry of Transportation; Fisheries and Oceans Canada; Bing Imagery		



1069 Wellington Rd S Suite 214
London, Ontario N6E 2H6
519-286-5509

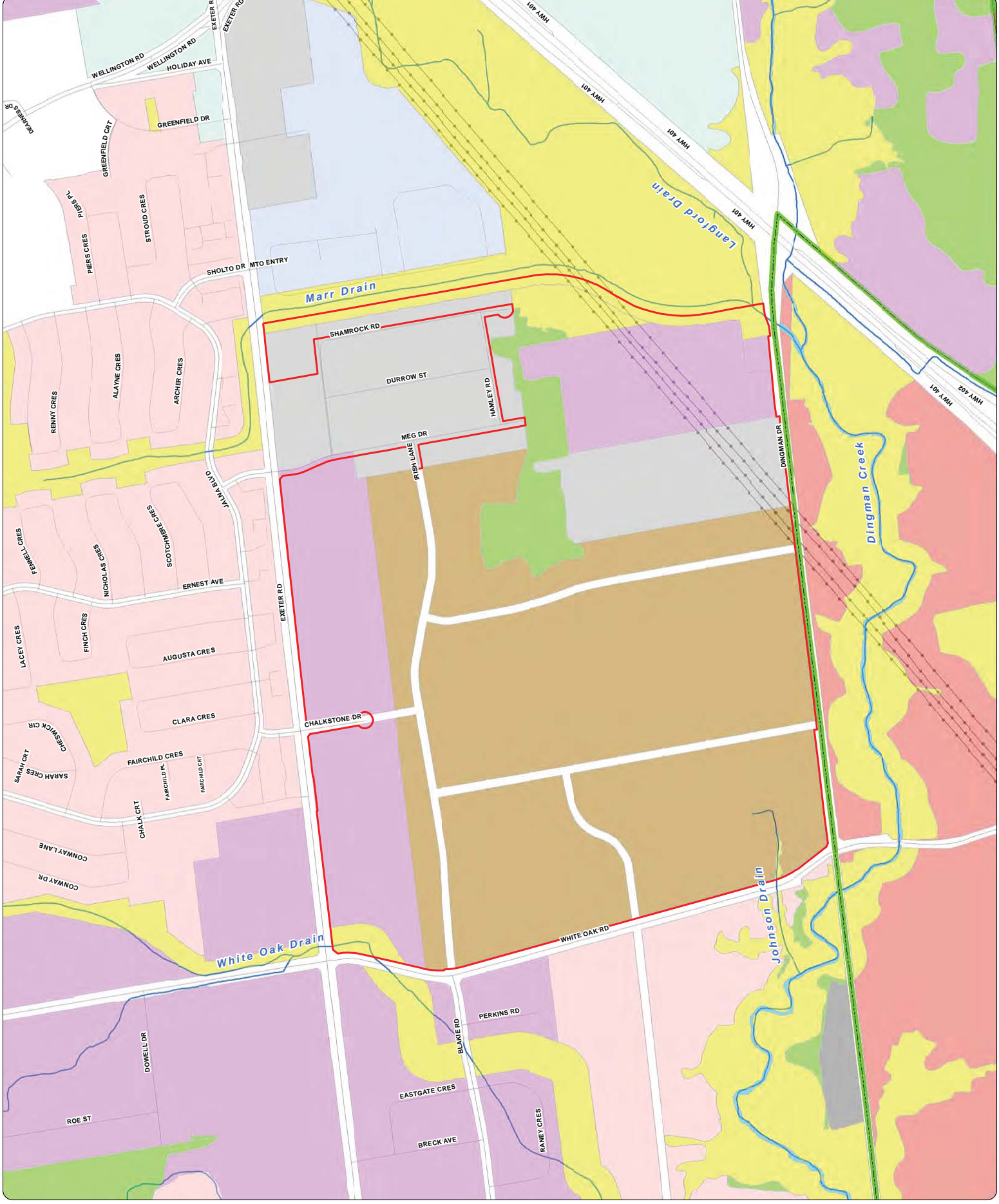
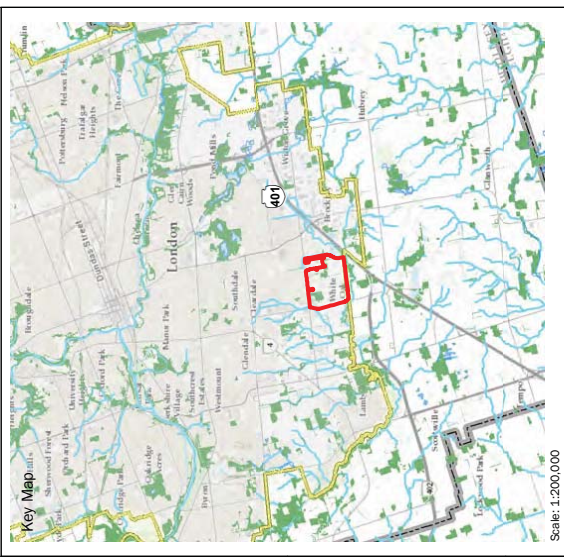


Figure 5
White Oak-Dingman Secondary Plan SLSR
Vegetation Communities



LEGEND

- Fish Habitat
- Watercourse
- Parcel
- Subject Lands
- Road
- Utility Line

Vegetation Communities

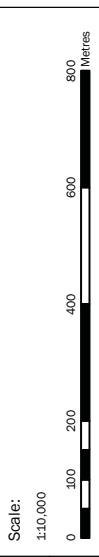
- Hedgerow (HDG)
- Meadow (CUM1)
- Meadow/Thicket (CUM1/CUT1)
- Thicket (CUT1)

Wetlands

- Open Water Aquatic (OAO)
- Meadow Marsh (MAM)
- Deciduous Thicket (SWT)
- Deciduous Swamp (SWD)
- SWD / MAM

Wetlands

- Cultural Woodland (CUW1)
- Deciduous Woodland (FOD)
- Lowland Deciduous Forest (FOD7)
- Poplar Deciduous Forest (FOD8-1)



Parsons Job No:	Date:	7/4/2019	Final By:	M.E.
Data Sources: Parsons; Ontario Ministry of Natural Resources and Forestry; Ontario Ministry of Transportation; Fisheries and Oceans Canada; Bing Imagery				

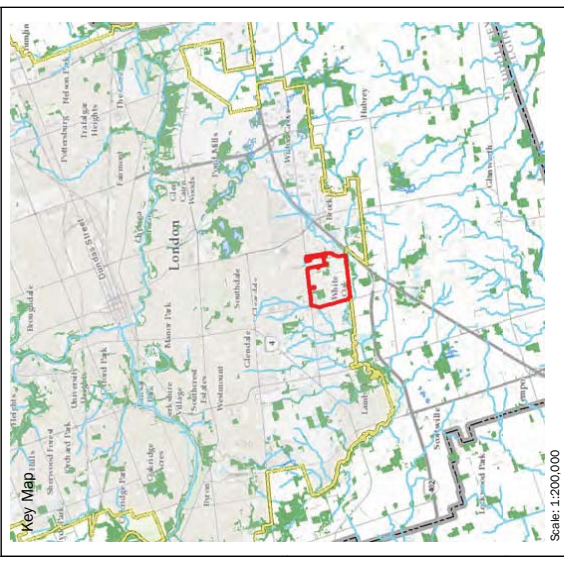
PARSONS

1069 Wellington Rd S Suite 214
 London, Ontario N6E 2H6
 519-286-5509



Code	Community Name
MAM2	Mineral Meadow Marsh
MAM2-1	Reed Canary Grass Mineral Meadow Marsh
MAM2-2	Deciduous Forest
MAM2-10	Deciduous Swamp
SWD	Deciduous Swamp
SWD1-1	Bur Oak Mineral Deciduous Swamp
SWD1-2	Silver Maple Mineral Deciduous Swamp
SWD2-1	Thicket Swamp
SWD2-2	Thicket Swamp
OAO	Open Aquatic
CUW1	Mineral Cultural Woodland
FOD	Deciduous Forest
FOD7	Fresh-Moist Poplar Deciduous Forest
FOD8-1	Fresh-Moist Poplar Deciduous Forest
CUM1	Mineral Meadow
CUM1	Mineral Cultural Meadow
CUT1	Mineral Cultural Thicket
CUT1	Mineral Cultural Thicket
HDG	Hedgerow
HDG	Hedgerow

Figure 7
White Oak-Dingman Secondary Plan SLSR
Significant Woodland Boundary Delineation



- LEGEND**
- Fish Habitat - Intermittent / Ephemeral
 - Fish Habitat - Permanent
 - Road
 - Utility Line
 - Significant Woodland Boundary (Proposed)
 - Subject Lands
 - Evaluated Wetland - Not Significant

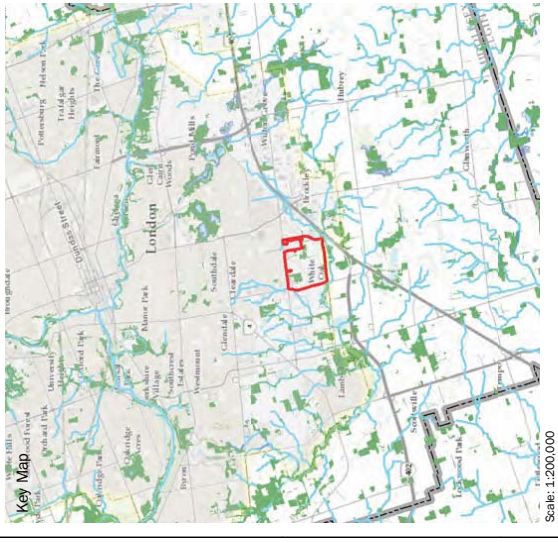
Scale:
 1:10,000

Parsons Job No:	Date: 7/4/2019	Prepared By: M.E.
Data Sources: Parsons; City of London; Geospatial Data from Official Plan, Ontario Ministry of Natural Resources and Forestry; Ontario Ministry of Transportation; Fisheries and Oceans Canada; Bing Imagery		

PARSONS
 1069 Wellington Rd S Suite 214
 London, Ontario N6E 2H6
 519-286-5509



Figure 8
White Oak-Dingman Secondary Plan SLR
Wetlands



LEGEND

- Fish Habitat - Intermittent / Ephemeral
 - Fish Habitat - Permanent
 - Road
 - Utility
 - Evaluated Vegetation Patch# 10099 / Significant Woodland
 - Subject Lands
 - Unevaluated Wetland - Field Verified
 - Unevaluated Wetland (Map 5 The London Plan) - Not Field Verified
 - Unevaluated Wetland (1989 Official Plan) - Not Field Verified
 - UTRCA Regulation Limit
- Wetland Evaluation Results**
- Evaluated Wetland - Not Significant

Scale:

1:10,000



Parsons Job No:

Date:
7/4/2019

Drawn By:
ME



Data Sources: Parsons; Ontario Ministry of Natural Resources and Forestry; Ontario Ministry of Transportation; Fisheries and Oceans Canada; Bing Imagery



1069 Wellington Rd S Suite 214
 London, Ontario N6E 2H6
 519-286-5509

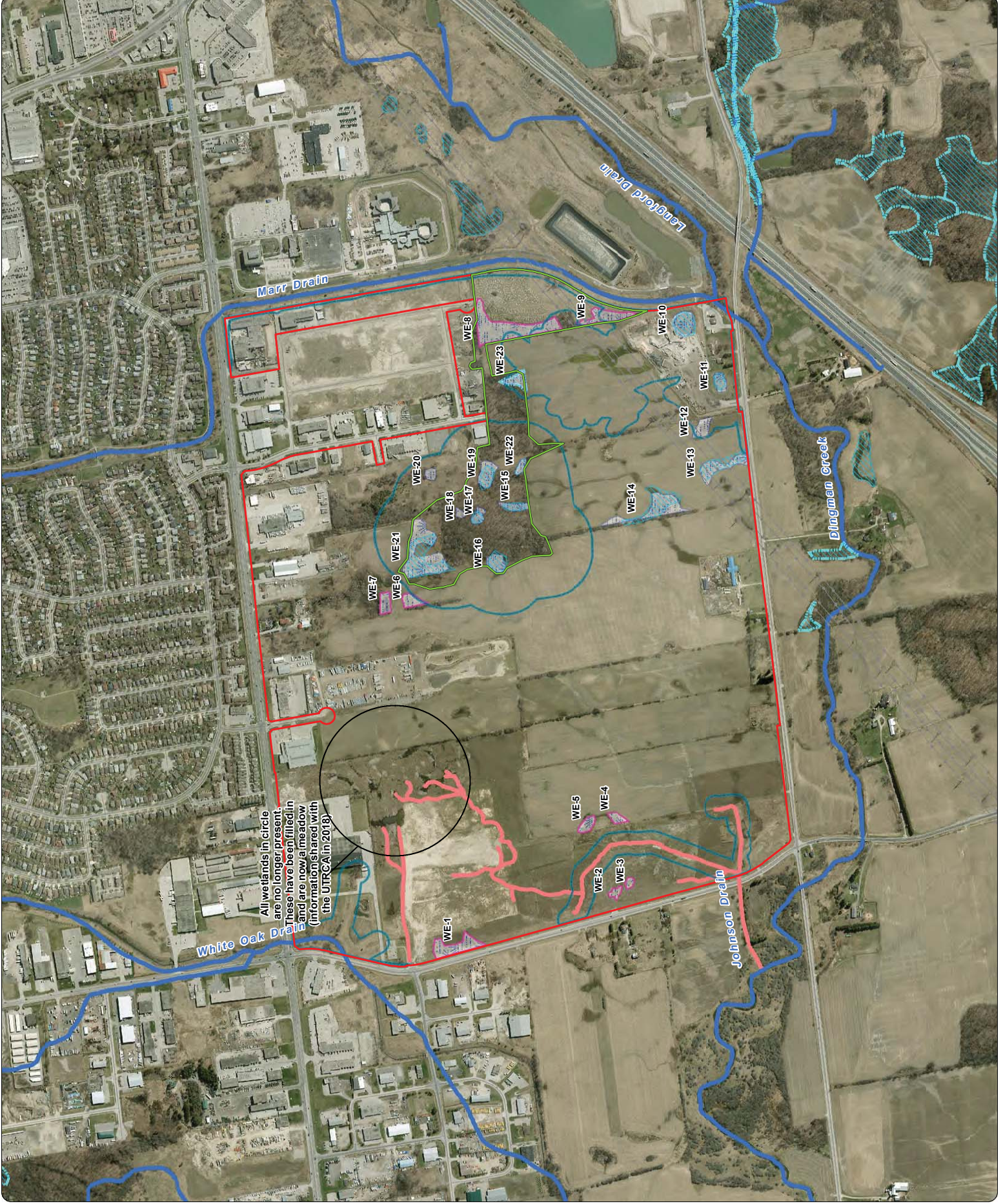
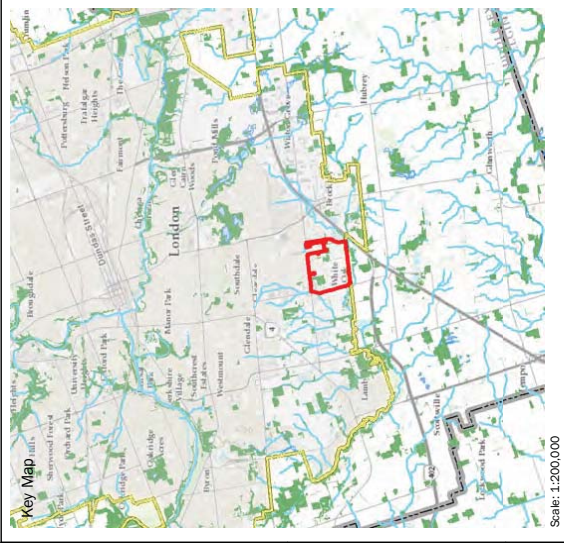
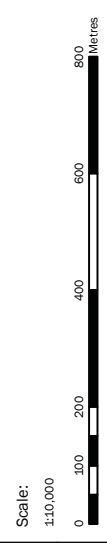


Figure 10
White Oak-Dingman Secondary Plan SLSR
Species at Risk



- LEGEND**
- Fish Habitat
 - Road
 - Utility Line
 - Subject Lands
 - Significant Woodland
 - Habitat for Eastern Meadowlark (Threatened)

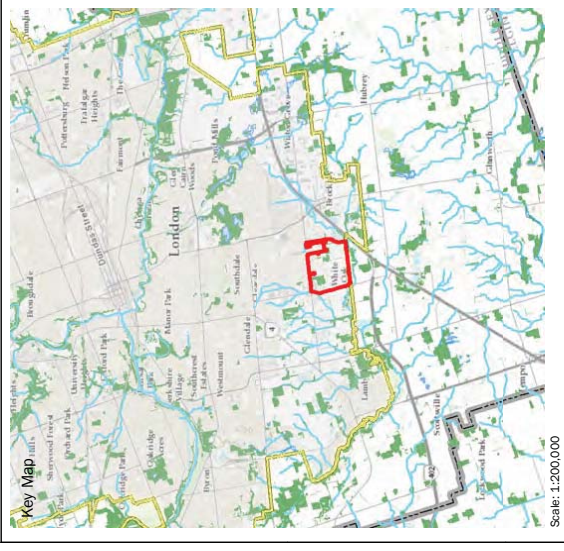


Parsons Job No:	Date: 7/4/2019	Prepared By: M.E.
Data Sources: Parsons; City of London; Geospatial Data from Official Plan, Ontario Ministry of Natural Resources and Forestry; Ontario Ministry of Transportation; Fisheries and Oceans Canada; Bing Imagery		

PARSONS
 1069 Wellington Rd S Suite 214
 London, Ontario N6E 2H6
 519-286-5509



Figure 11
White Oak-Dingman Secondary Plan SLSR
Natural Heritage Opportunities



LEGEND

- Fish Habitat
 - Road
 - Utility Line
 - Subject Lands
 - Significant Woodland
 - Wetland
- Habitat Creation**
- Potential Wetland Creation/Restoration Area
- Linkages and Corridors**
- Potential Drain/Swale/Realignment/Restoration
 - Upland Corridor (Map 5 - The London Plan)
 - 'Big Picture' Meta-Corridors (City of London)
 - Significant Valleylands (Map 5 - The London Plan)

Scale:
 1:10,000



Parsons Job No:
 Date:
 7/4/2019

Prepared By:
 M.E.

Data Sources: Parsons; City of London; Geospatial Data from Official Plan; Ontario Ministry of Natural Resources and Forestry; Ontario Ministry of Transportation; Fisheries and Oceans Canada; Bing Imagery



1069 Wellington Rd S Suite 214
 London, Ontario N6E 2H6
 519-286-5509

