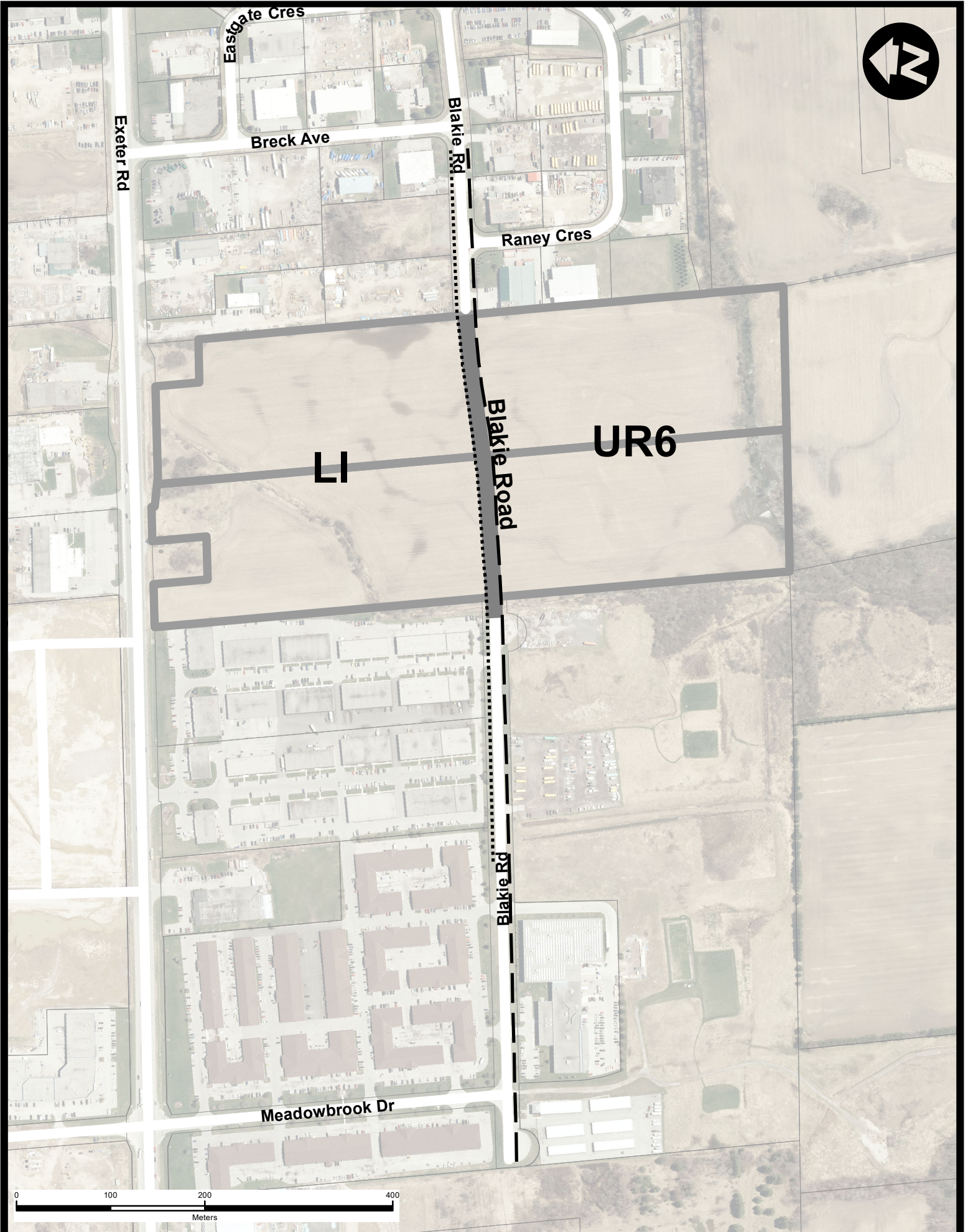
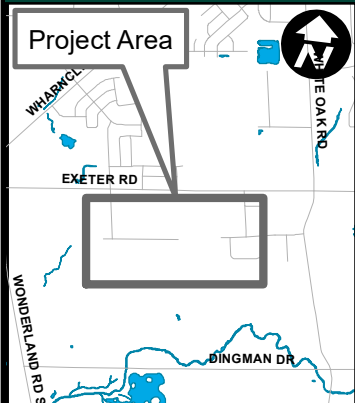


APPENDIX 'B'






LOCATION MAP



Blakie Road Local Improvement

Blakie Road from 60m west of Meadowbrook Drive to west of Breck Avenue.

-  Proposed Sanitary Sewer
-  Proposed Watermain
-  Proposed Road

Map Produced by the
Sewer Engineering
Division

Sept 25 2019 CM



London
CANADA
300 Dufferin Avenue,
PO Box 5035
London, Ontario
N6A 4L9
www.London.ca