

Figure No. 4A: London OP - Natural Heritage System

- Source map: Excerpts from The City of London Official Plan, Schedule B-1, Map 4

Map 4- North part of the Study Lands



Map 7 – South part of the Study Lands

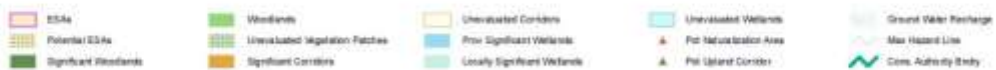


Figure No. 4B: London OP - Natural Resources & Hazards

- Source map: Excerpts from The City of London Official Plan, Schedule B-2

Map 4- North part of the Study Lands

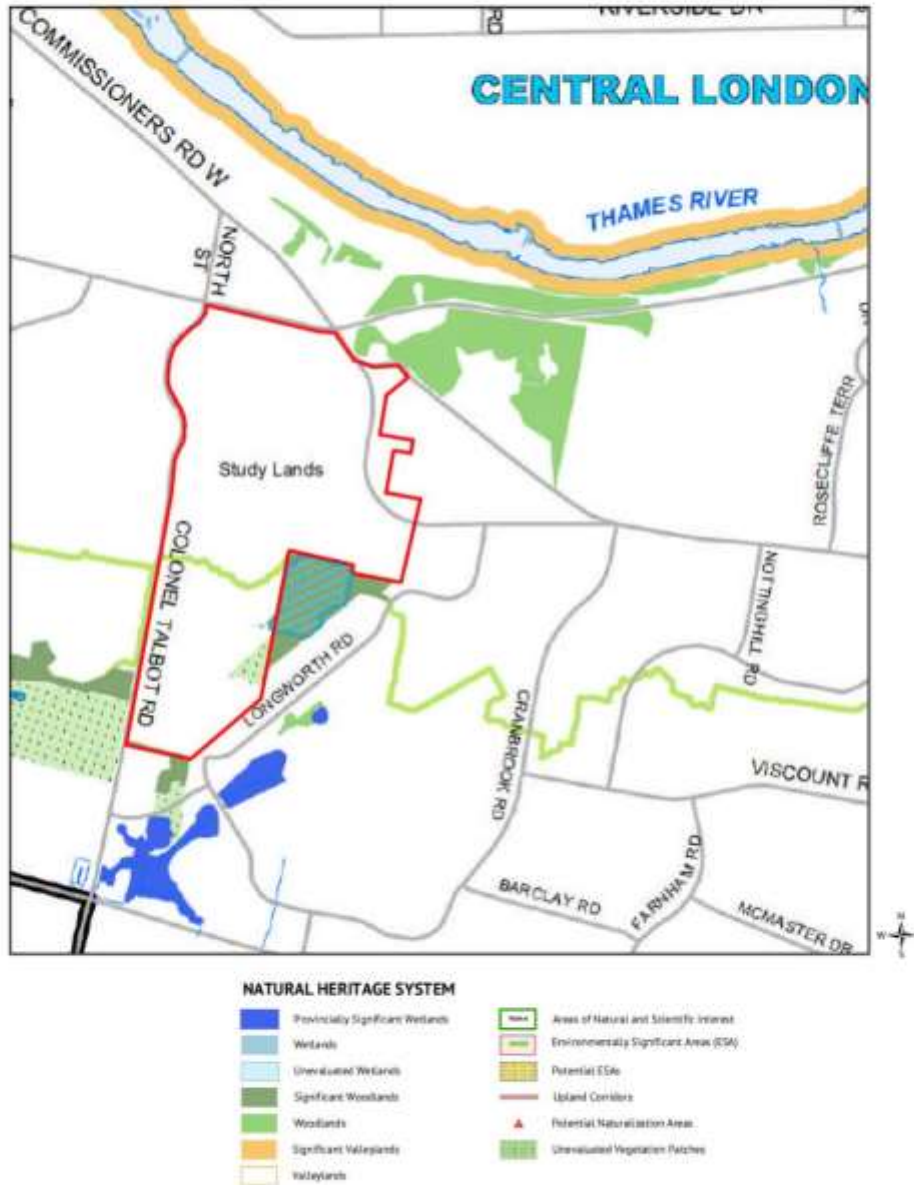


Map 7 – South part of the Study Lands



Figure No. 4C: London OP – Map 5

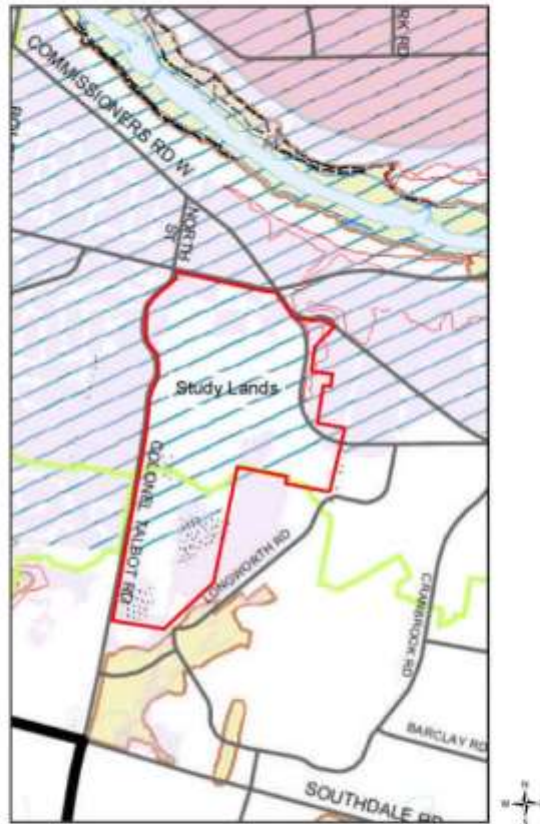
- Source map: Excerpts from The City of London Official Plan, Schedule B-2



Byron Pit, City of London-Subject Lands Status Report: June 2019
 Part Lots 41 & 42, Concession 1, Westminster

Figure No. 4D: London OP – Map 6

- Source map: Excerpts from The City of London Official Plan, Hazards & Natural Resources



NATURAL RESOURCES

- | | |
|----------------------------|---------------------------------------|
| Aggregate Resource Area | Emergency Municipal Water Well |
| Extractive Industrial Area | Significant Groundwater Recharge Area |
| Wellhead Protection Area | Highly Vulnerable Aquifer |

HAZARDS

- | | |
|--|--|
| Regulatory Flood Line
<small>Regulatory Flood Line: A line that indicates the boundary of the area that is subject to flooding from a river or stream. It is used to determine the area that is subject to flooding from a river or stream.</small> | Reverse Coarse Hazard Limit for Unconfined Systems |
| Special Policy Area | Maximum Hazard Line |
| Potential Special Policy Area | Conservation Authority Regulation Line |
| Reverse Finest Hazard Limit for Confined Systems
<small>Reverse Finest Hazard Limit for Confined Systems: A line that indicates the boundary of the area that is subject to flooding from a confined system. It is used to determine the area that is subject to flooding from a confined system.</small> | Abandoned Oil/Gas Wells |



Figure No. 5: SLSR, Vegetation Communities

(For ELC Types, see Appendix 2, page 12)



SCALE 1:5000





SCALE 1:5000





Figure No. 6: SLSR, Species at Risk and Significant Wildlife Habitat



SCALE 1:5000





Figure No. 7: SLSR, Recommended Significant Woodlands



SCALE 1:5000

