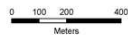


CITY OF LONDON  
 TREE PROTECTION BY-LAW  
 SCHEDULE D

as of August 30, 2016

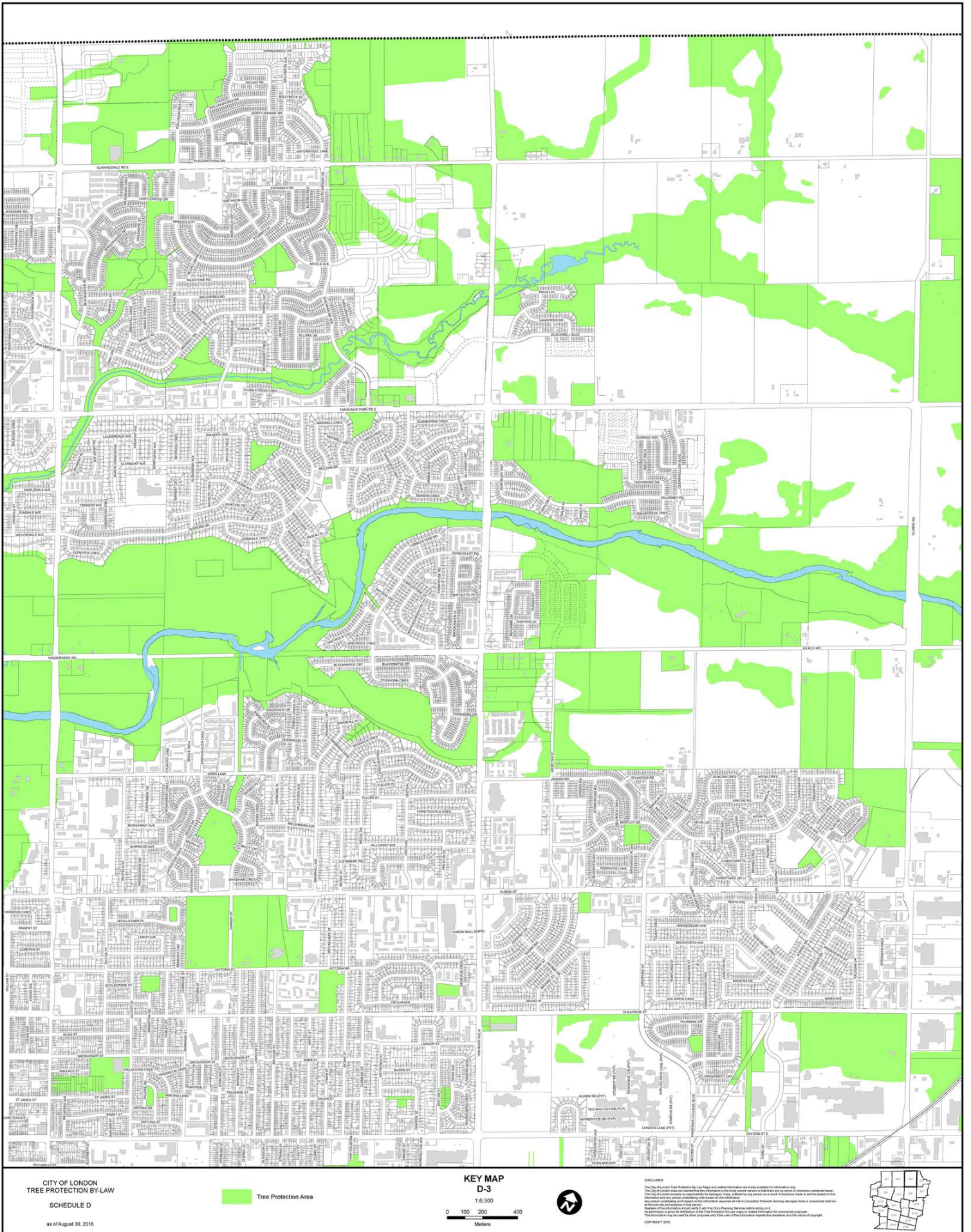
 Tree Protection Area

KEY MAP  
 D-2  
 1:6,500



**DISCLAIMER**  
 The City of London Tree Protection By-Law Maps and related information are made available for information only. The City of London accepts no responsibility for damages, past or future, suffered by any person as a result of reliance on the information or any person's conduct, such as removal or destruction of trees, or any other action, based on the information provided on these maps. All users are advised to verify the information on these maps with the City of London Planning Department. The City of London Planning Department is not responsible for any damages, past or future, suffered by any person as a result of reliance on the information provided on these maps. This information is provided for informational purposes only. The user of this information assumes the liability and the risk of copyright. COPYRIGHT 2016





CITY OF LONDON  
 TREE PROTECTION BY-LAW  
 SCHEDULE D  
 as of August 30, 2016

 Tree Protection Area

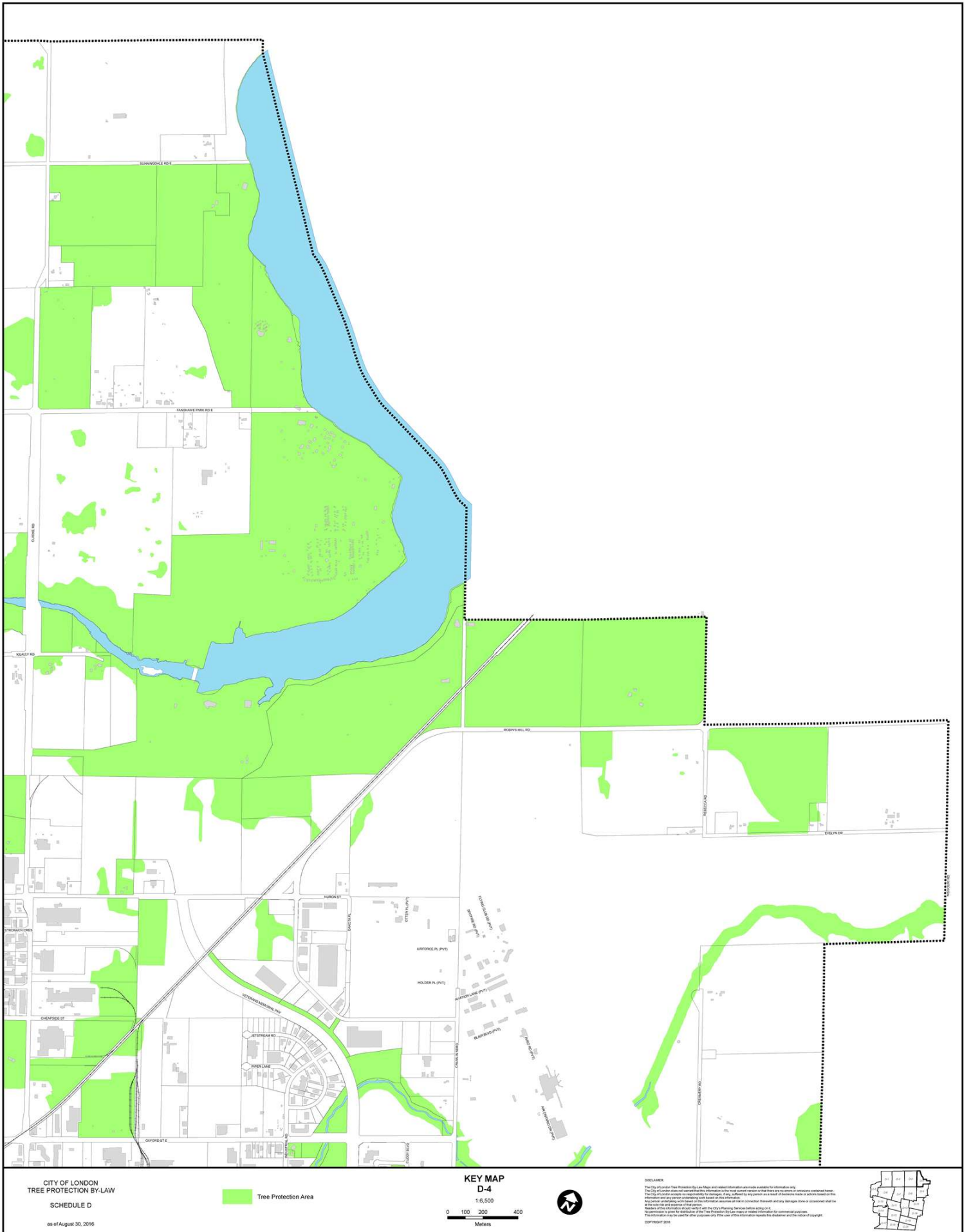
KEY MAP  
 D-3  
 1:6,500

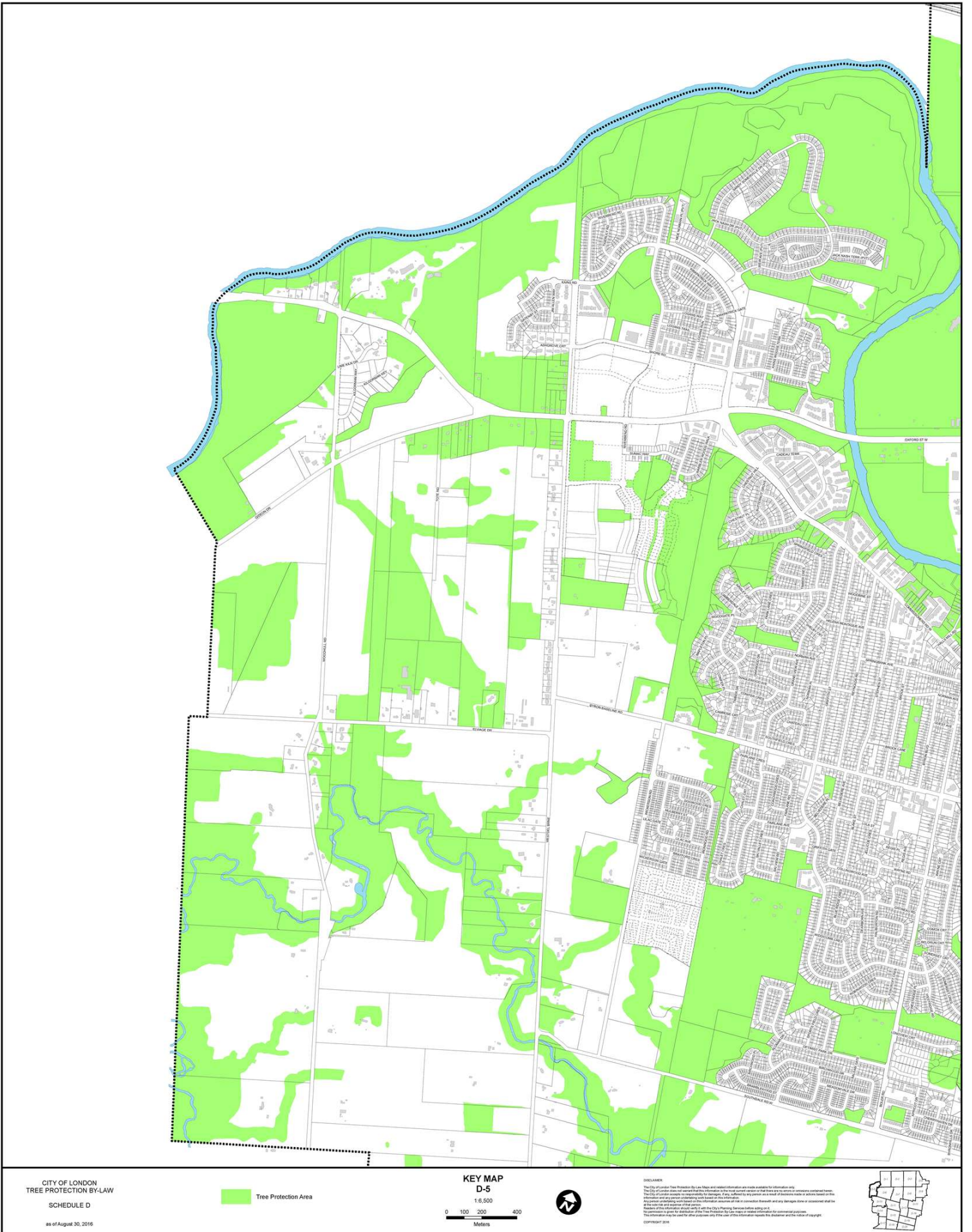
0 100 200 400  
 Meters



DISCLAIMER  
 The City of London Tree Protection By-Law Maps and related information are made available for information only.  
 The City of London assumes no responsibility for damages, past, present or future, or for any loss or damage to property or persons, or for any other loss or damage, arising from the use of this information. The City of London assumes no responsibility for damages, past, present or future, or for any loss or damage to property or persons, or for any other loss or damage, arising from the use of this information. The City of London assumes no responsibility for damages, past, present or future, or for any loss or damage to property or persons, or for any other loss or damage, arising from the use of this information. The City of London assumes no responsibility for damages, past, present or future, or for any loss or damage to property or persons, or for any other loss or damage, arising from the use of this information.







CITY OF LONDON  
TREE PROTECTION BY-LAW

SCHEDULE D

as of August 30, 2016

 Tree Protection Area

KEY MAP  
D-5

1:6,500

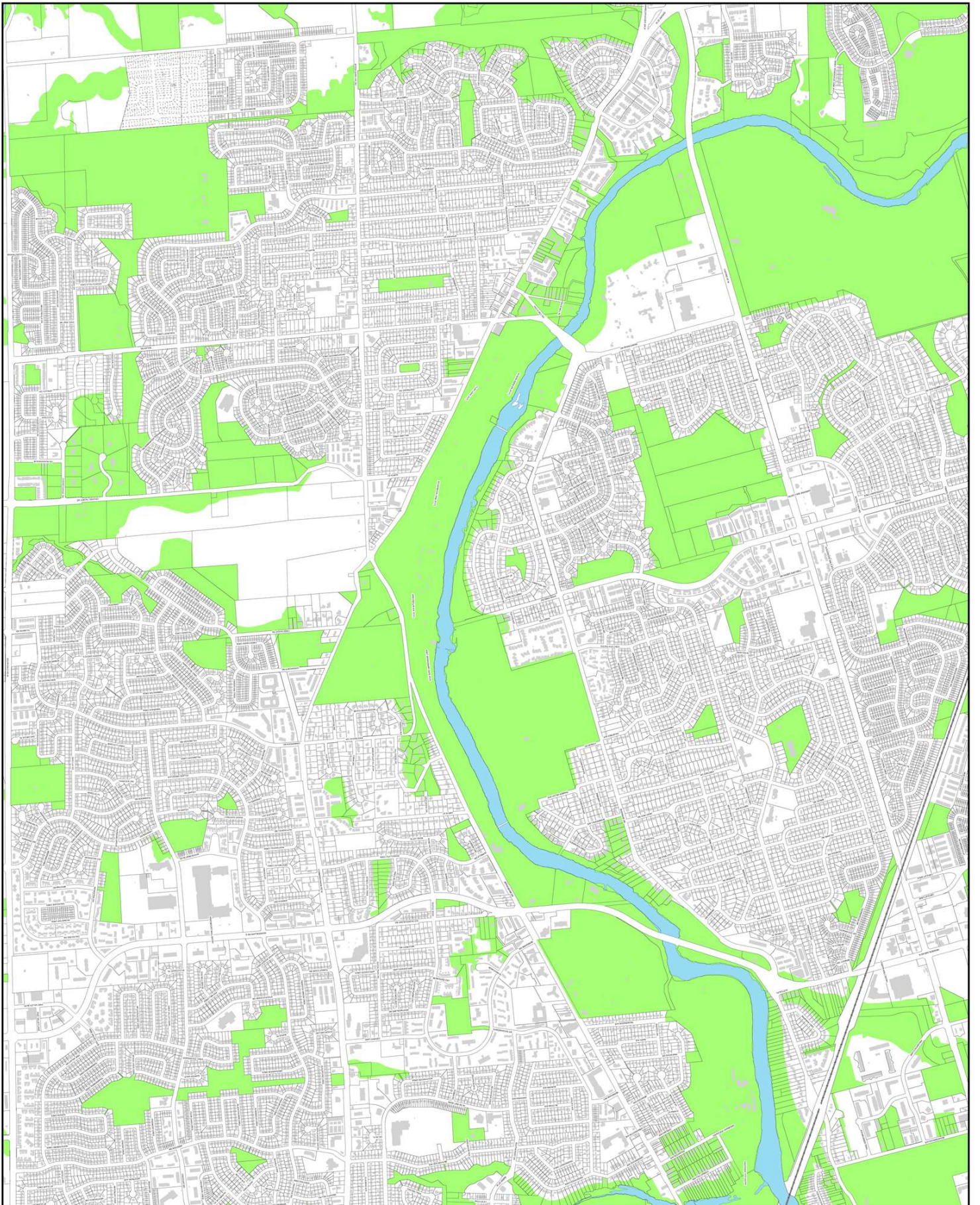
0 100 200 400  
Meters



DISCLAIMER

The City of London Tree Protection By-Law Maps and related information are made available for information only.  
The City of London does not warrant that the information on the map is accurate or that the map is up to date or complete. The City of London accepts no responsibility for damages, injury, or loss, suffered by any person as a result of reliance on the information on the map or on any other information on the map.  
All information on the map is the property of the City of London and is not to be reproduced, stored in a retrieval system, or transmitted, in any form or by any means, electronic, mechanical, photocopying, recording, or otherwise, without the prior written permission of the City of London.  
The information on the map is for informational purposes only. The user of this information assumes the liability and the risk of copyright infringement 2016.





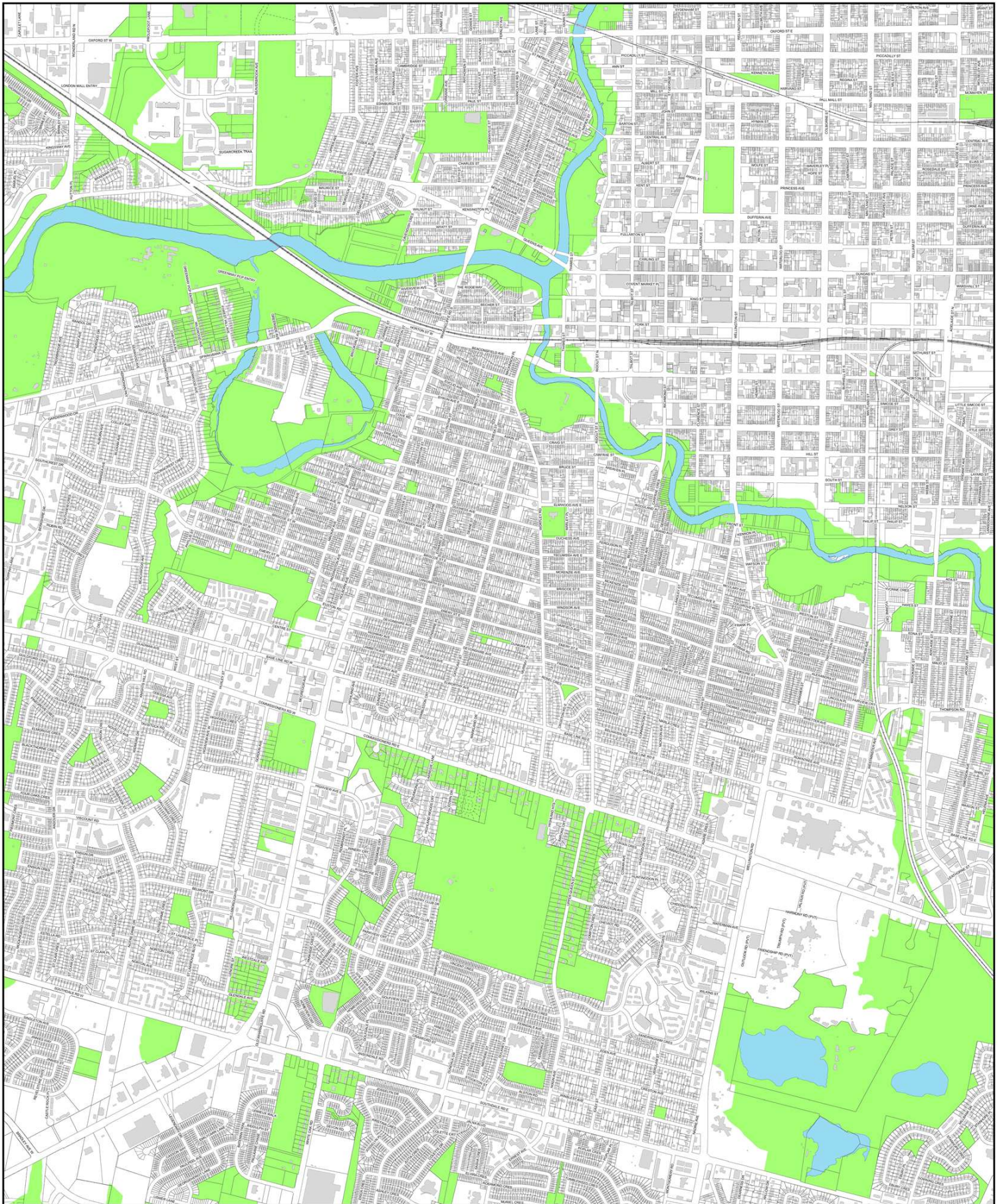
**DISCLAIMER**  
 The information on this key map is based on the latest available information and is not intended to be used for any purpose other than for information only. The City of London does not warrant the accuracy or completeness of the information and is not responsible for any loss or damage caused by its use. Any person who uses the information on this key map does so at their own risk. The City of London does not accept any liability for any loss or damage caused by its use. The information on this key map is provided for information only and is not intended to be used for any purpose other than for information only. The City of London does not warrant the accuracy or completeness of the information and is not responsible for any loss or damage caused by its use. Any person who uses the information on this key map does so at their own risk. The City of London does not accept any liability for any loss or damage caused by its use.



**KEY MAP**  
**D-8**

Tree Protection Area

**CITY OF LONDON**  
**TREE**  
**PROTECTION BY-LAW**  
**SCHEDULE D**  
 as of August 30, 2018

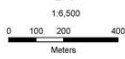


CITY OF LONDON  
TREE PROTECTION BY-LAW  
SCHEDULE D

as of August 30, 2016

 Tree Protection Area

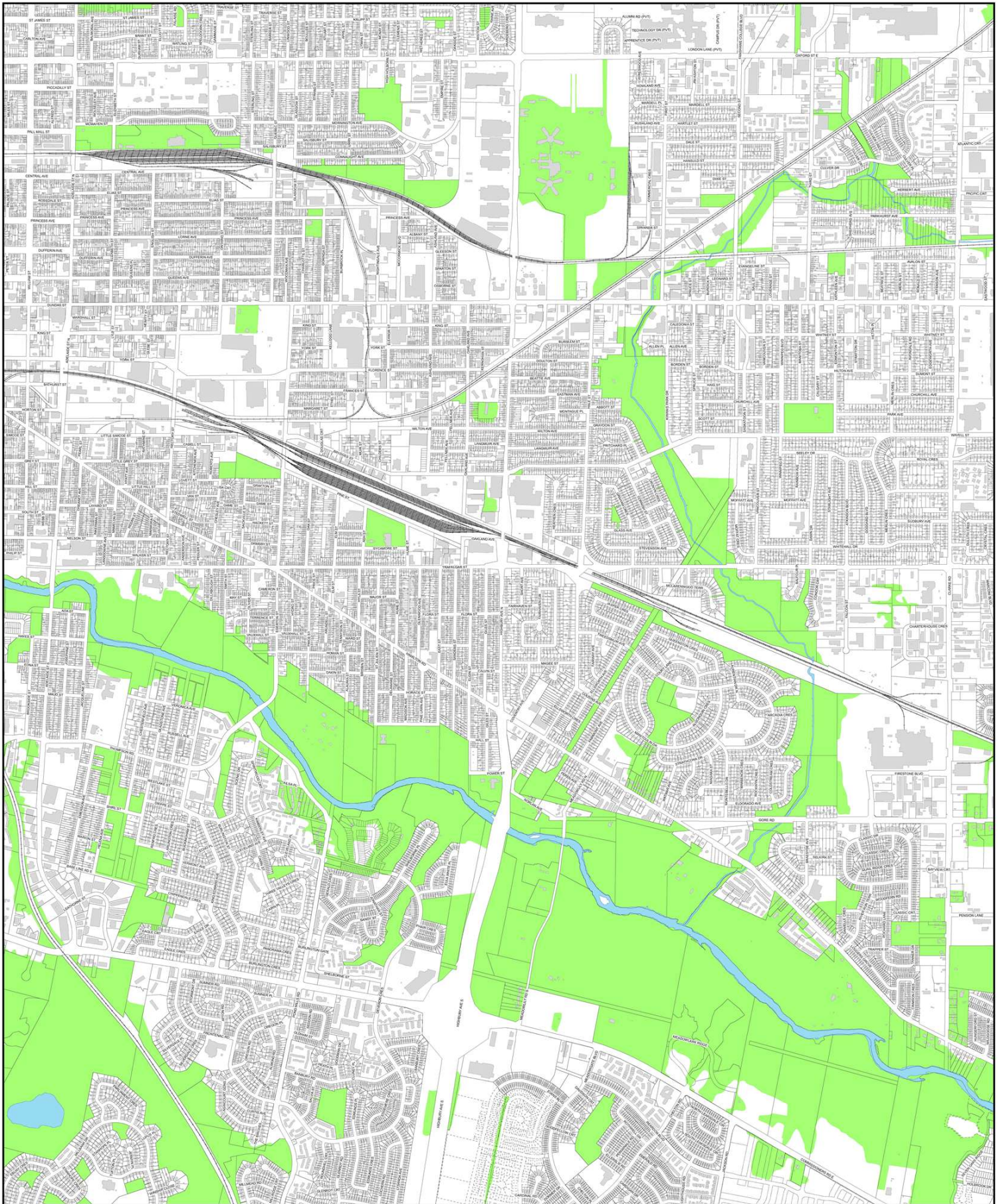
KEY MAP  
D-7



**DISCLAIMER**  
The City of London Tree Protection By-Law Maps and related information are made available for information only. The City of London accepts no responsibility for damages, past, present or future, or for any loss or damage caused by the use of the information provided. All information is provided as is and without any warranty, express or implied. The City of London does not accept any liability for any loss or damage caused by the use of the information provided. The information is provided for informational purposes only. The user of this information assumes the liability and the risk of any error.





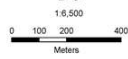


CITY OF LONDON  
 TREE PROTECTION BY-LAW  
 SCHEDULE D

as of August 30, 2016

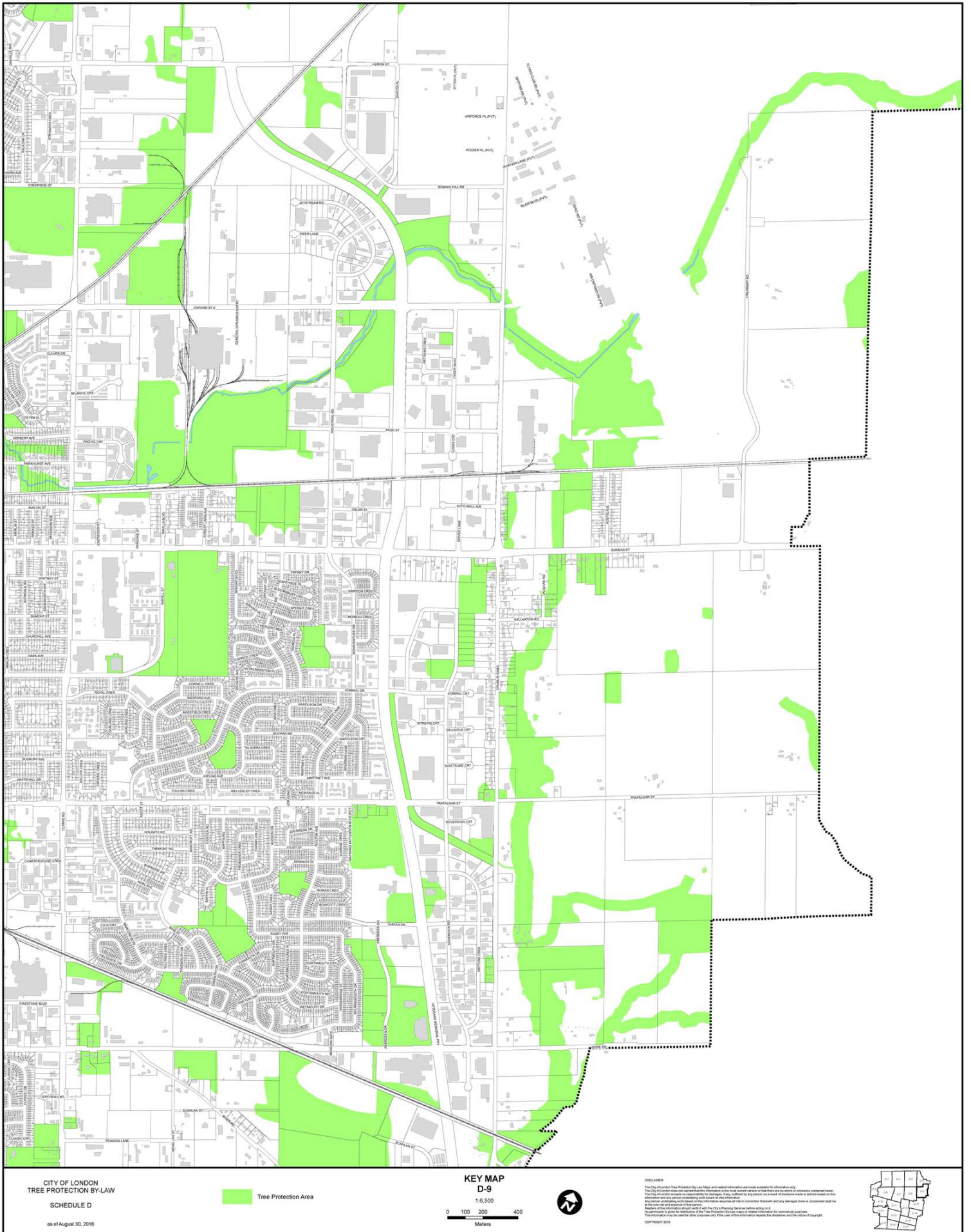
 Tree Protection Area

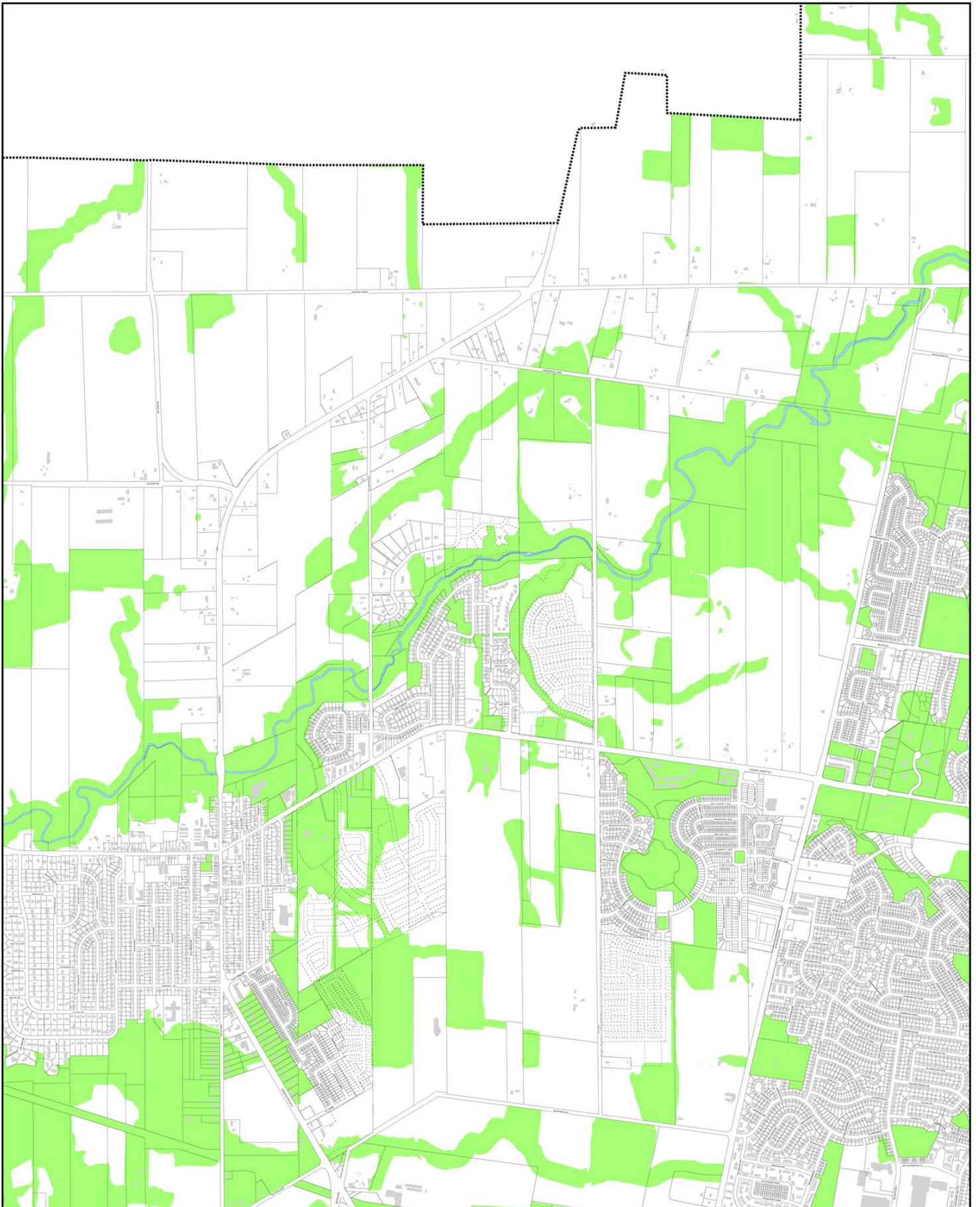
KEY MAP  
 D-8



**DISCLAIMER**  
 The City of London Tree Protection By-Law Maps and related information are made available for information only. The City of London accepts no responsibility for damages, past, present or future, arising from the use of this information. All information is provided as is and without warranty. The City of London is not liable for any damages, past, present or future, arising from the use of this information. The information is provided for informational purposes only. The user of this information assumes the liability and the risk of any error.







**DISCLAIMER**  
 The information contained in this document is for information only.  
 The City of London does not warrant that the information is correct, current or that there are no errors or omissions contained herein.  
 The City of London accepts no responsibility for any consequences arising from the use of the information or any reliance placed on the information.  
 Any person using the information does so at their own risk. In consequence, the City of London and any person does not or occasion shall be liable for any loss or damage of any kind, including any consequential loss or damage, arising from the use of the information.  
 Reproduction in whole or in part of this document is prohibited without the prior written consent of the City of London.  
 This information may be used by other persons and the City of London does not accept any liability for any loss or damage arising from its use.

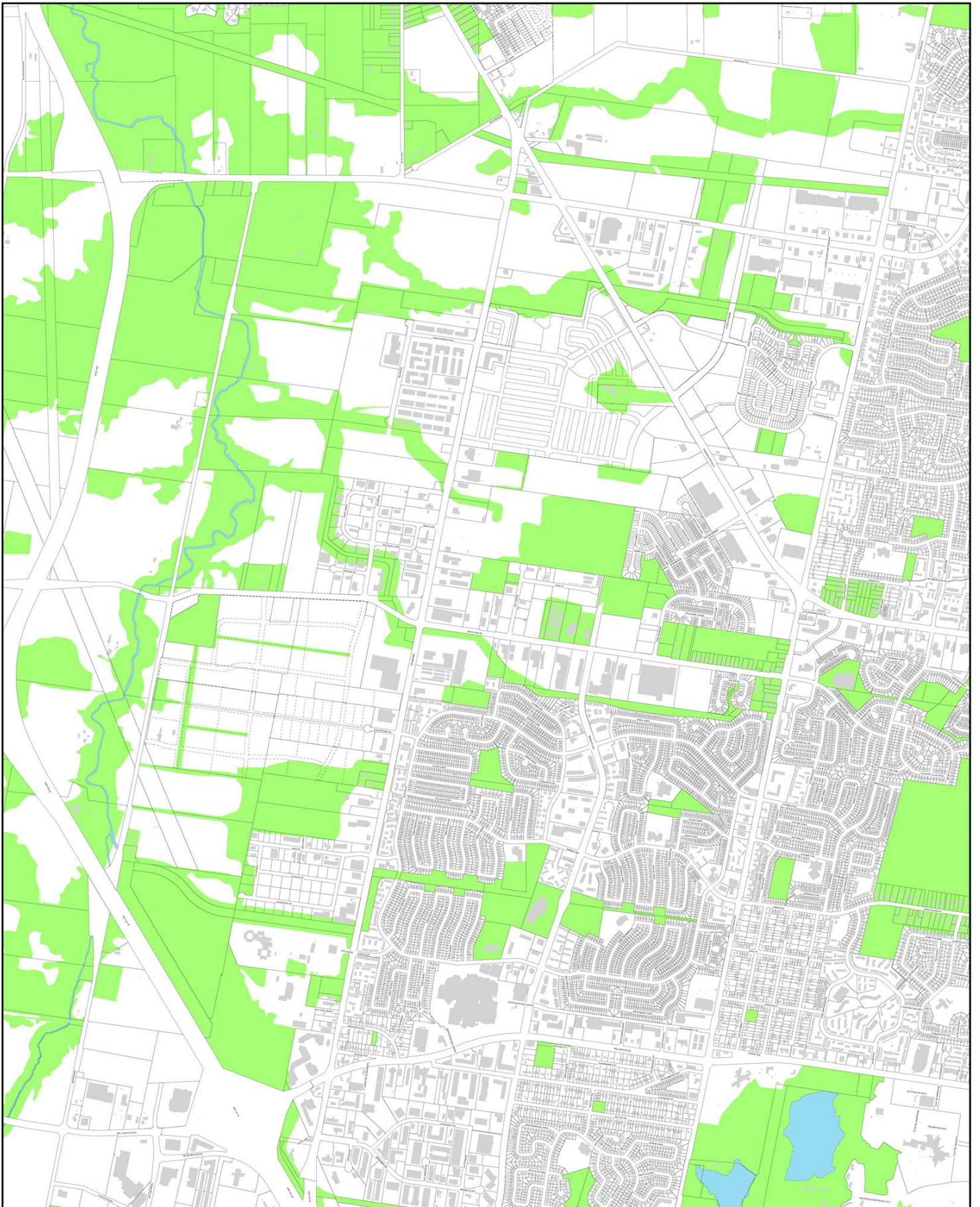
0 50 100 200  
 METERS



**KEY MAP**  
 D-10

Tree Protection Area

**CITY OF LONDON**  
**TREE**  
**PROTECTION BY-LAW**  
**SCHEDULE D**  
 as of August 30, 2016



**DISCLAIMER**  
 The information in this Schedule D-11 has been prepared for information only. The City of London does not warrant that the information is correct, accurate or that there are no errors or omissions contained therein. The City of London accepts no responsibility for damages of any kind arising from the use of the information or actions based on the information. Any person who relies on the information does so at their own risk. In connection therewith and any damages done or occasioned shall be deemed to be the responsibility of the user.  
 Reproduction is permitted for personal use only. This information is not to be used for other purposes. Any use of this information for other purposes is prohibited. For commercial purposes, permission is given for a limited number of copies to be made for internal use only.  
 This information may be used by other agencies for the purpose of providing services to the borough and the wider area of London.  
 Copyright 2016

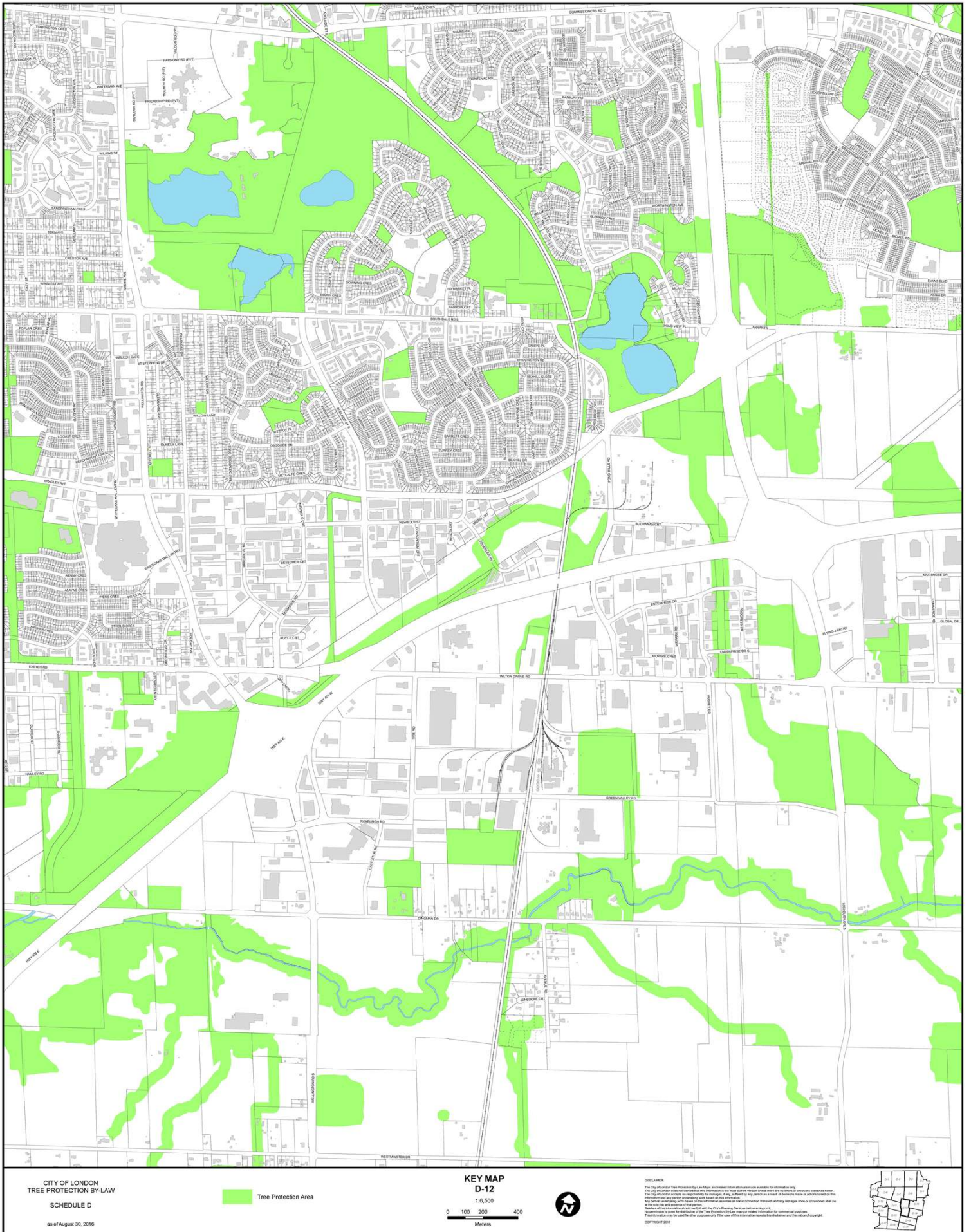
0 50 100 200  
 METRES

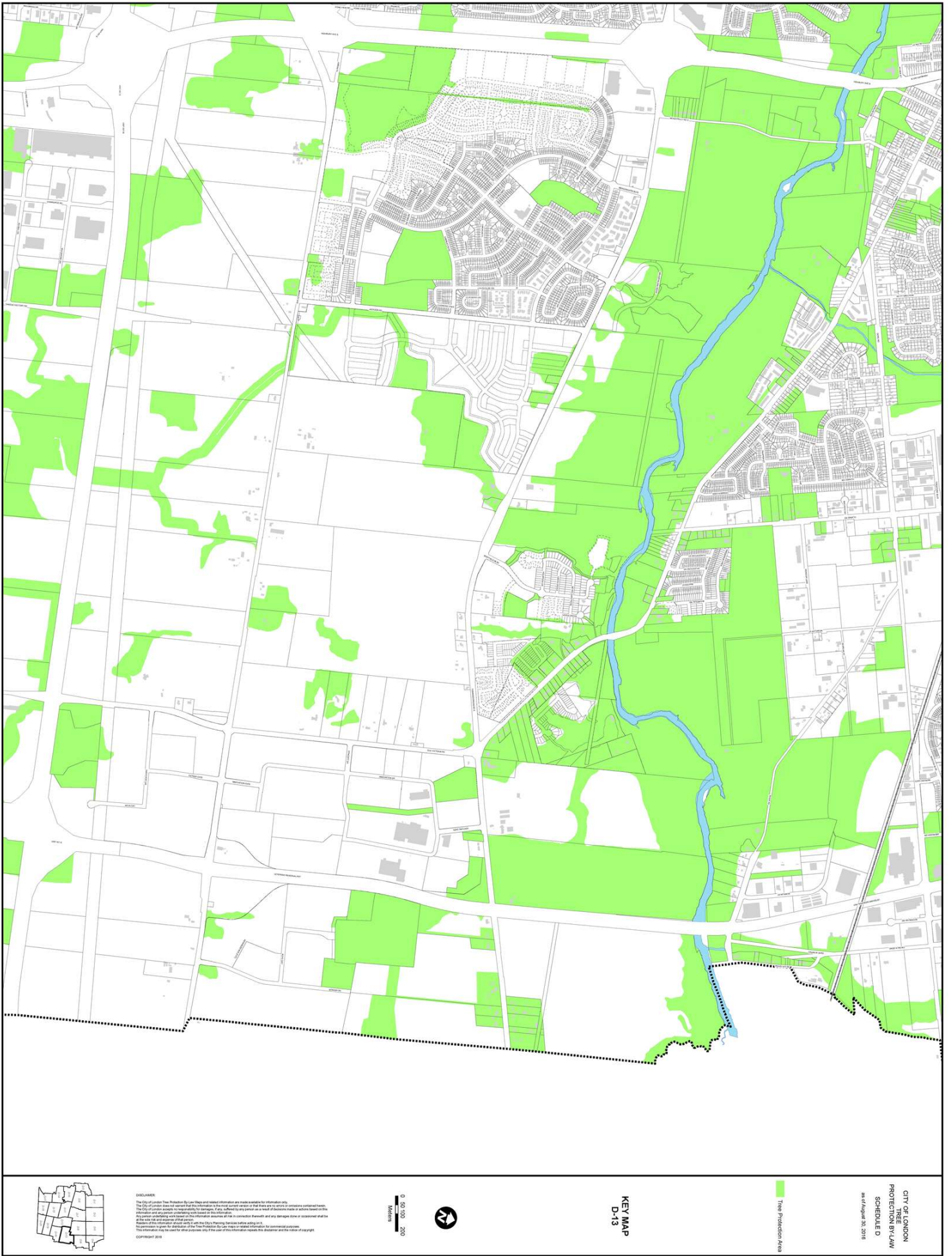


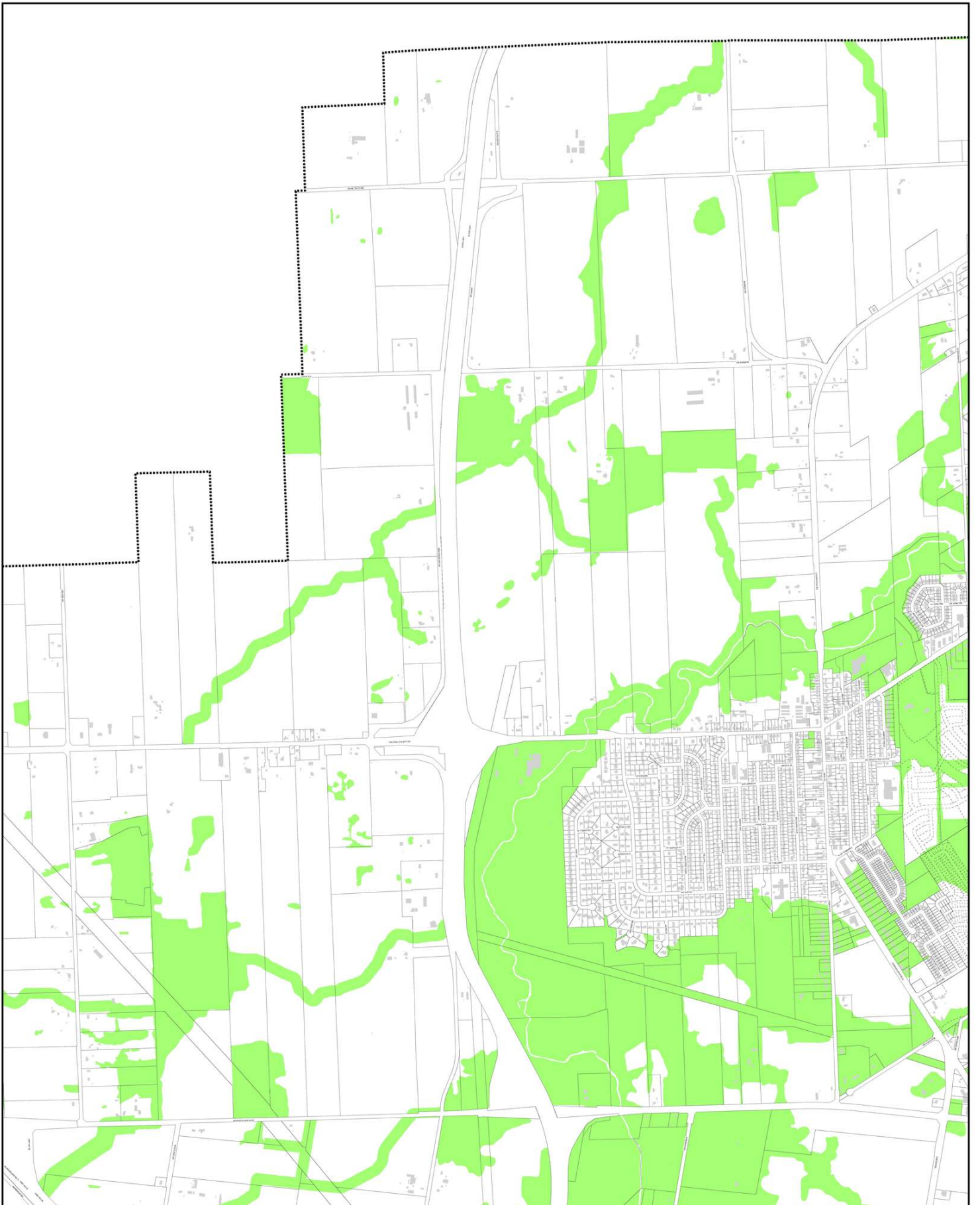
**KEY MAP**  
 D-11

Tree Protection Area

**CITY OF LONDON**  
**TREE**  
**PROTECTION BY-LAW**  
**SCHEDULE D**  
 as of August 30, 2016







CITY OF LONDON  
 TREE  
 PROTECTION BY-LAW  
 SCHEDULE D  
 as of August 30, 2016

KEY MAP  
 D-14

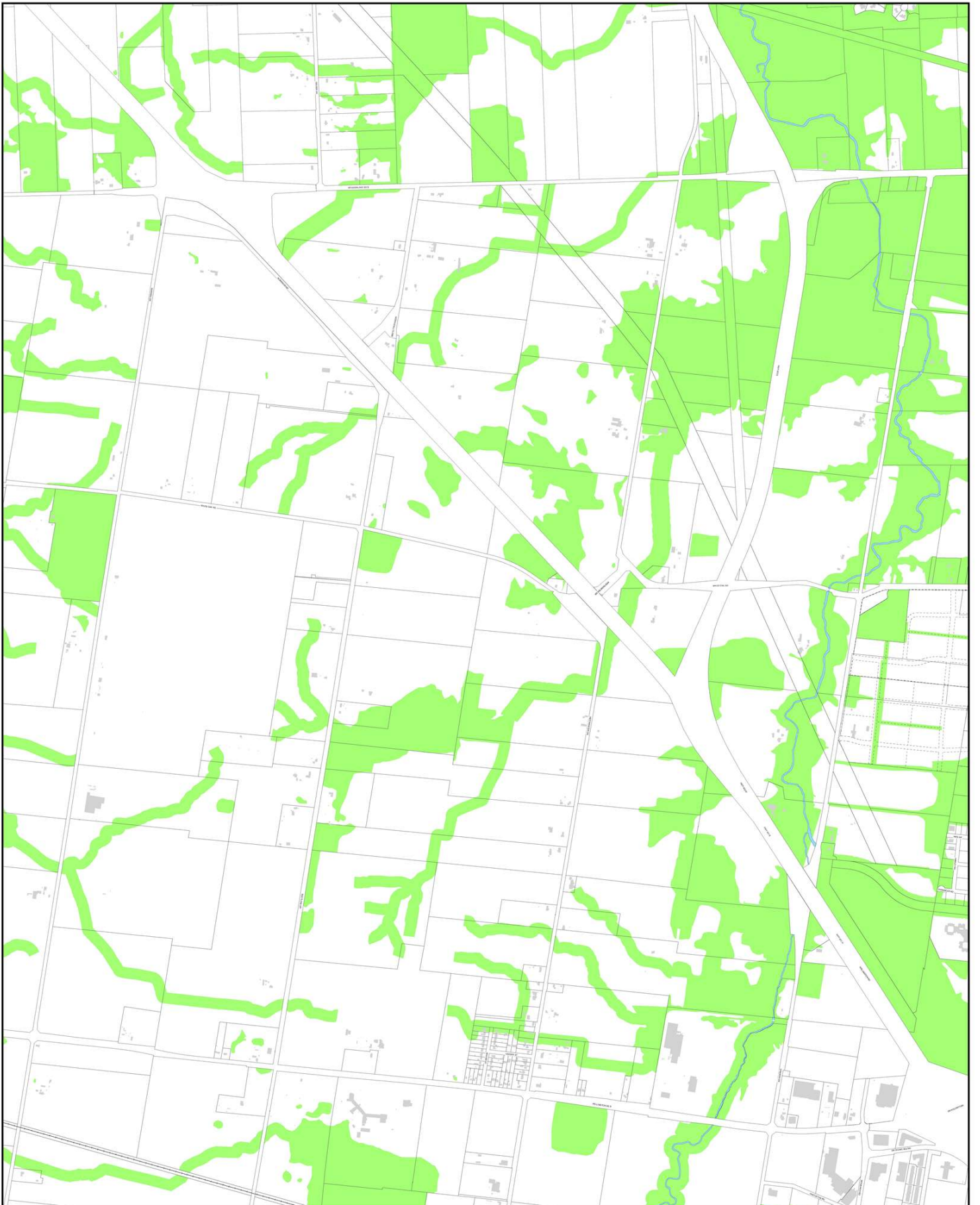


0 50 100 200  
 METERS



**DISCLAIMER**  
 The information contained in this Key Map and related observations are made available for information only.  
 The City of London does not warrant that the information is correct, current, accurate or that there are no errors or omissions contained herein.  
 The City of London accepts no responsibility for damages, if any, suffered by any person as a result of reliance made on advice based on the  
 information and observations contained in this Key Map.  
 Any person undertaking any works on the information shown on this Key Map, in connection therewith and any damage done or occasioned shall be  
 the sole responsibility of that person.  
 Reproduction in whole or in part of this Key Map by any person is prohibited without the prior written permission of the City of London.  
 This information may be used by other persons and the City of London does not accept any liability for such use.

Copyright 2016



**DISCLAIMER**  
 The information contained in this document is for information only. The City of London does not warrant that the information is correct, accurate or that there are no errors or omissions contained herein. The City of London accepts no responsibility for damages of any nature or kind, whether direct or indirect, arising from the use of the information contained in this document. Any person who uses the information contained in this document shall do so at their own risk. The City of London does not accept any liability for any loss or damage, whether direct or indirect, arising from the use of the information contained in this document. This information may be used by other persons and the City of London does not accept any liability for any loss or damage, whether direct or indirect, arising from the use of the information contained in this document.

0 50 100 200  
 METRES

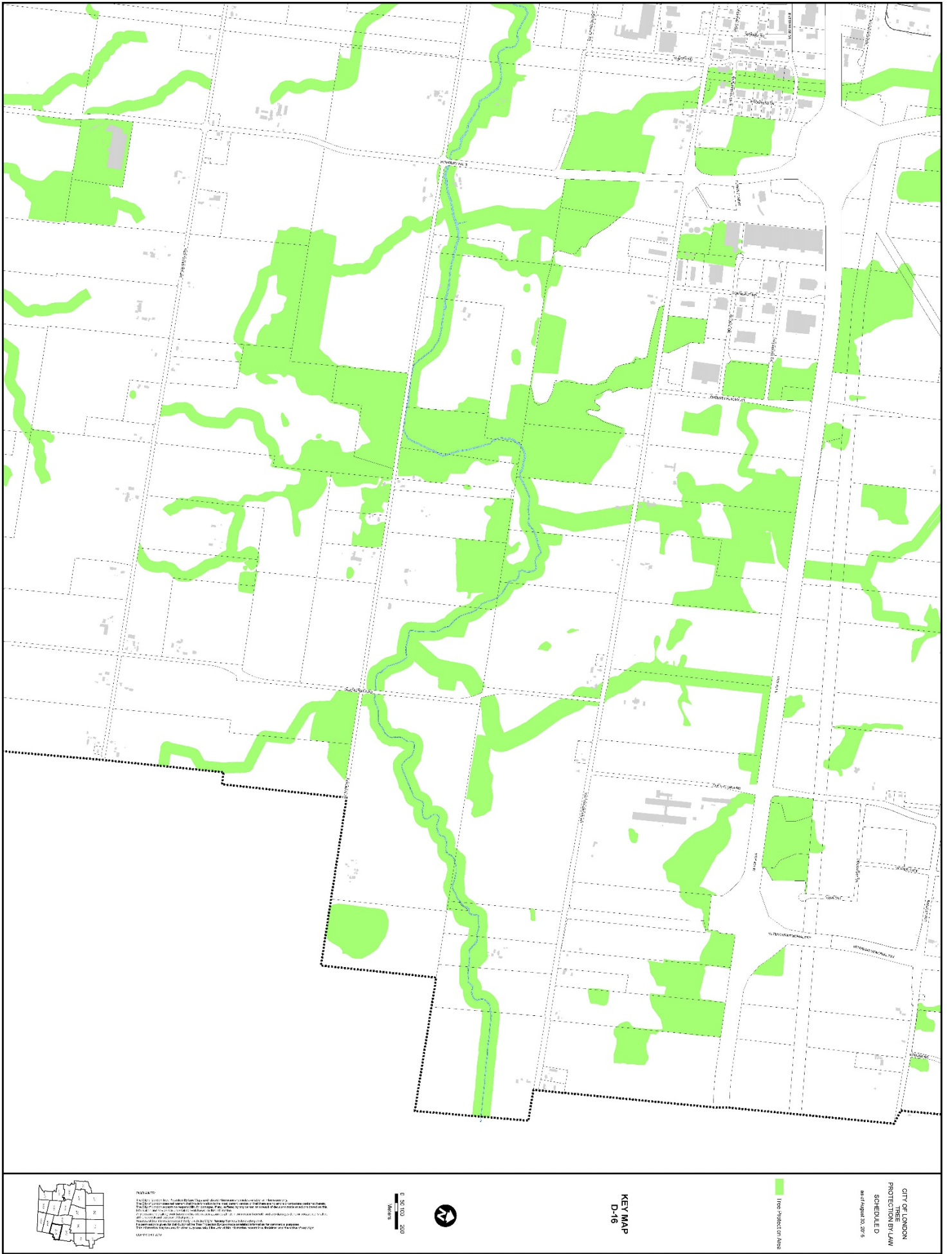


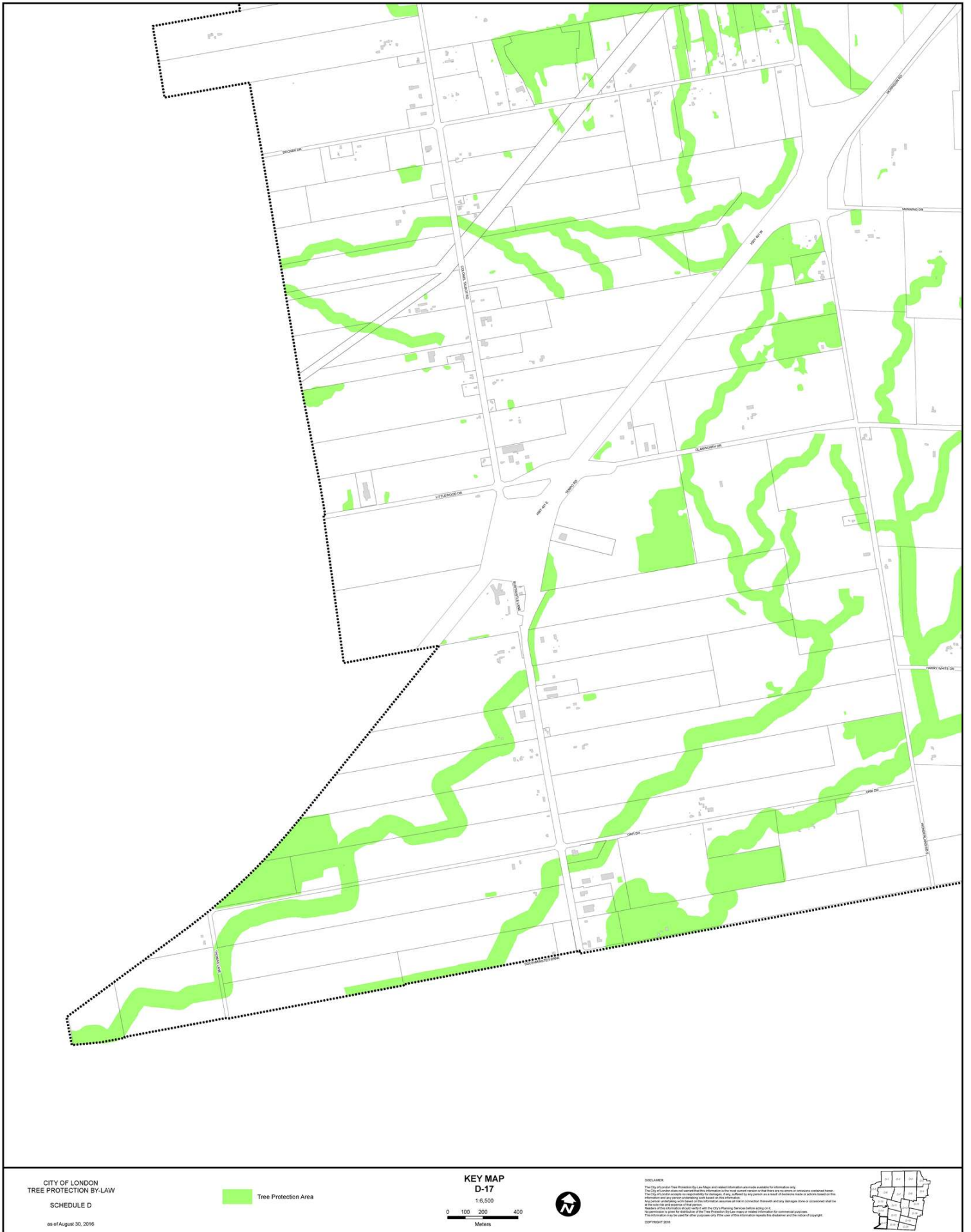
**KEY MAP**  
 D-15

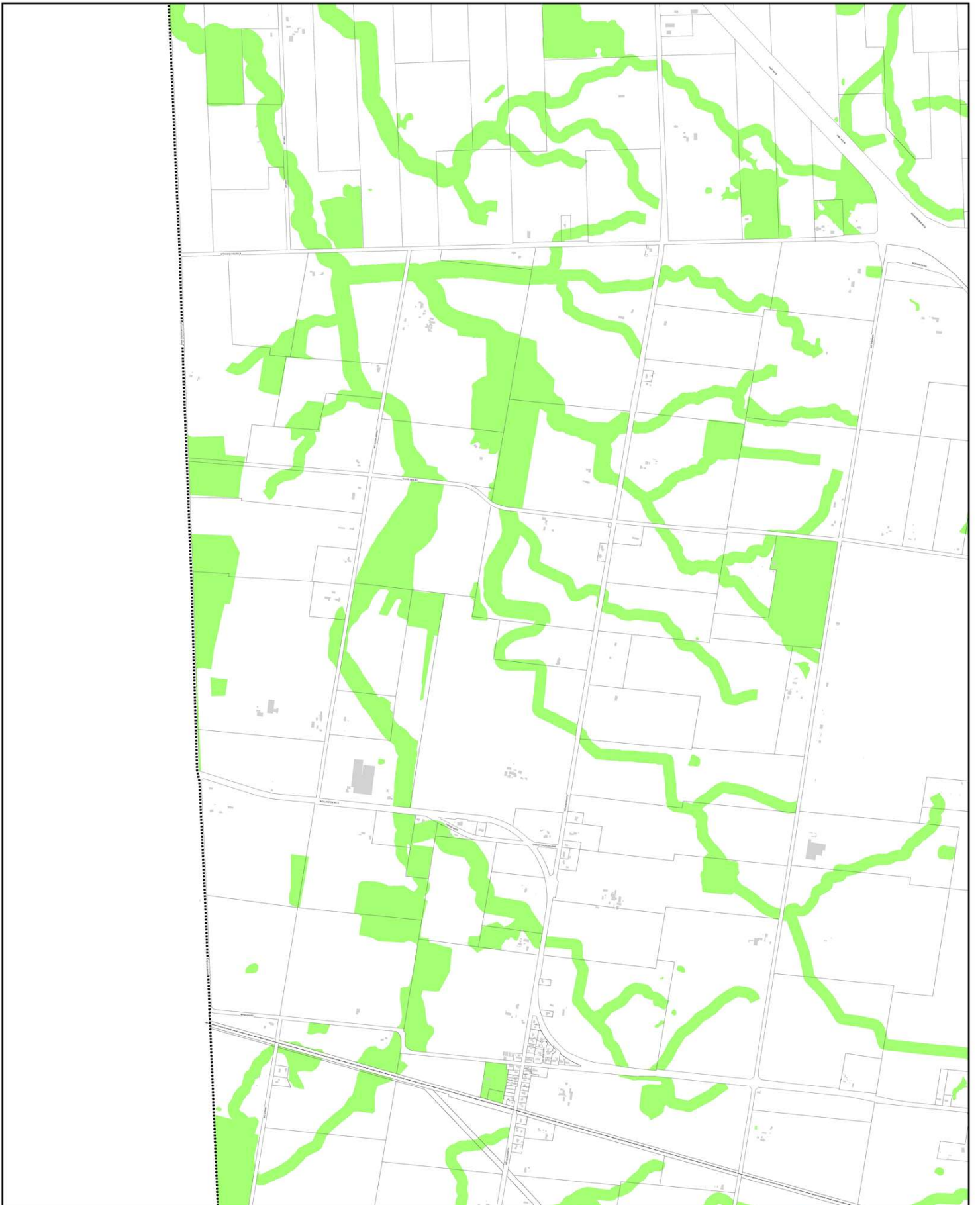
Tree Preservation Area

**CITY OF LONDON**  
**TREE**  
**PROTECTION BY-LAW**  
**SCHEDULE D**  
 as of August 30, 2016









**DISCLAIMER**  
 The information contained in this document is for information only. The City of London does not warrant that the information is correct, current or that there are no errors or omissions contained herein. The City of London accepts no responsibility for damages of any kind, whether to any person or as a result of reliance made or action based on the information contained in this document. Any person undertaking any work on the information contained in this document shall be responsible for their own actions. The City of London does not accept any liability for any loss or damage, whether direct or indirect, arising from the use of the information contained in this document. This information may be used by other persons and the City of London does not accept any liability for any loss or damage, whether direct or indirect, arising from the use of the information contained in this document.

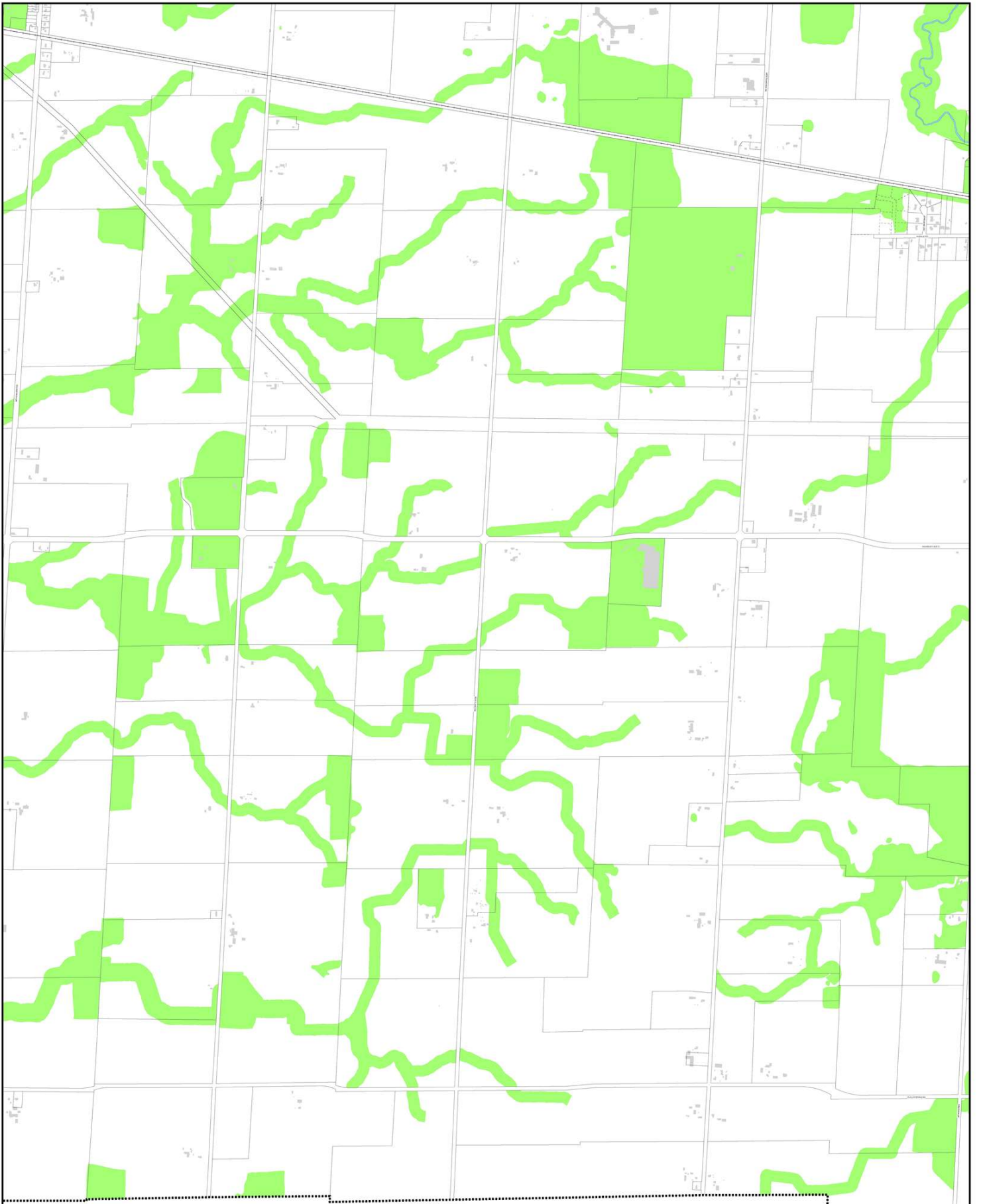
0 50 100 200  
 METRES



**KEY MAP**  
 D-18

Tree Protection Area

**CITY OF LONDON**  
**TREE**  
**PROTECTION BY-LAW**  
**SCHEDULE D**  
 as of August 30, 2018



**DISCLAIMER**  
 The information contained in this Schedule D is for information only. The City of London does not warrant that the information is correct, accurate or that there are no errors or omissions contained herein. The City of London accepts no responsibility for any loss or damage suffered as a result of reliance on the information contained herein. Any person who relies on the information contained herein shall do so at their own risk and any loss or damage suffered shall be the responsibility of the user. The City of London does not accept any liability for any loss or damage suffered as a result of reliance on the information contained herein. This information may be used for other purposes than those for which it was prepared. The information is provided for general information only and should not be used for any other purpose.

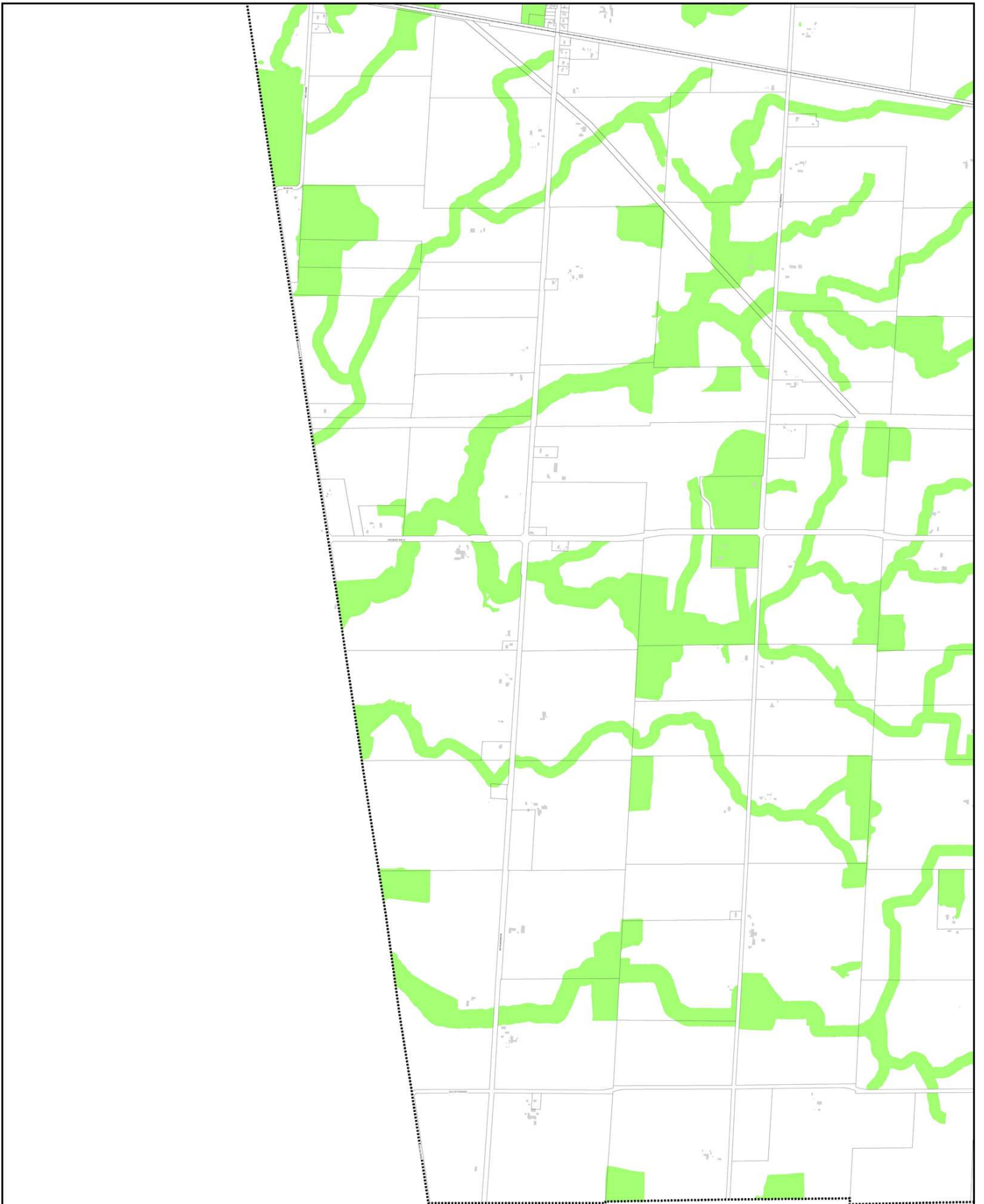
0 50 100 200  
 METRES



**KEY MAP**  
 D-19

Tree Preservation Area

**CITY OF LONDON**  
**TREE**  
**PROTECTION BY-LAW**  
**SCHEDULE D**  
 as of August 30, 2016



**DISCLAIMER**  
 The City of London Tree Protection By-Law Maps and related information are made available for information only.  
 The City of London does not warrant the accuracy, completeness, or timeliness of the information contained herein.  
 The City of London accepts no responsibility for damages, injury, or loss of any kind as a result of decisions made or actions based on this information and assumes no liability for any such damages, injury, or loss.  
 All content published by the City of London is provided as a service to the public and is not intended to constitute an offer of any financial product or service.  
 All the links and images of this service are the City of London's property and are not to be used for any other purpose without the City of London's prior written consent.  
 The City of London is not responsible for any damages, injury, or loss of any kind as a result of decisions made or actions based on this information and assumes no liability for any such damages, injury, or loss.  
 This information may be used for other purposes only if the user of this information accepts the disclaimer and the rules of copyright.

© Copyright 2016

0 200 400  
 Meters



**KEY MAP**  
 D-20

Tree Protection Area

**CITY OF LONDON**  
**TREE**  
**PROTECTION BY-LAW**  
**SCHEDULE D**  
 as of August 30, 2016