

TO:	CHAIR AND MEMBERS CIVIC WORKS COMMITTEE MEETING ON SEPTEMBER 24, 2019
FROM:	KELLY SCHERR, P. ENG., MBA, FEC MANAGING DIRECTOR, ENVIRONMENTAL AND ENGINEERING SERVICES AND CITY ENGINEER
SUBJECT:	AMENDMENTS TO THE TRAFFIC AND PARKING BY-LAW

RECOMMENDATION

That on the recommendation of the Managing Director, Environmental and Engineering Services and City Engineer, the proposed by-law, attached as Appendix A **BE INTRODUCED** at the Municipal Council meeting to be held on October 1st, 2019, for the purpose of amending the Traffic and Parking By-law (PS-113).

2019-23 STRATEGIC PLAN

The following report supports the Strategic Plan through the strategic focus area of **Building a Sustainable City** by improving safety, traffic operations and residential parking needs in London's neighbourhoods.

BACKGROUND

The Traffic and Parking By-law (PS-113) requires amendments (Appendix A) to address traffic safety, operations and parking concerns. The following amendments are proposed:

1. Loading Zones

A new 'loading zone' on the east side of Talbot Street, south of King Street is recommended as part of the Talbot Street project currently underway. This loading zone will help mitigate the loss of loading zones on King Street.

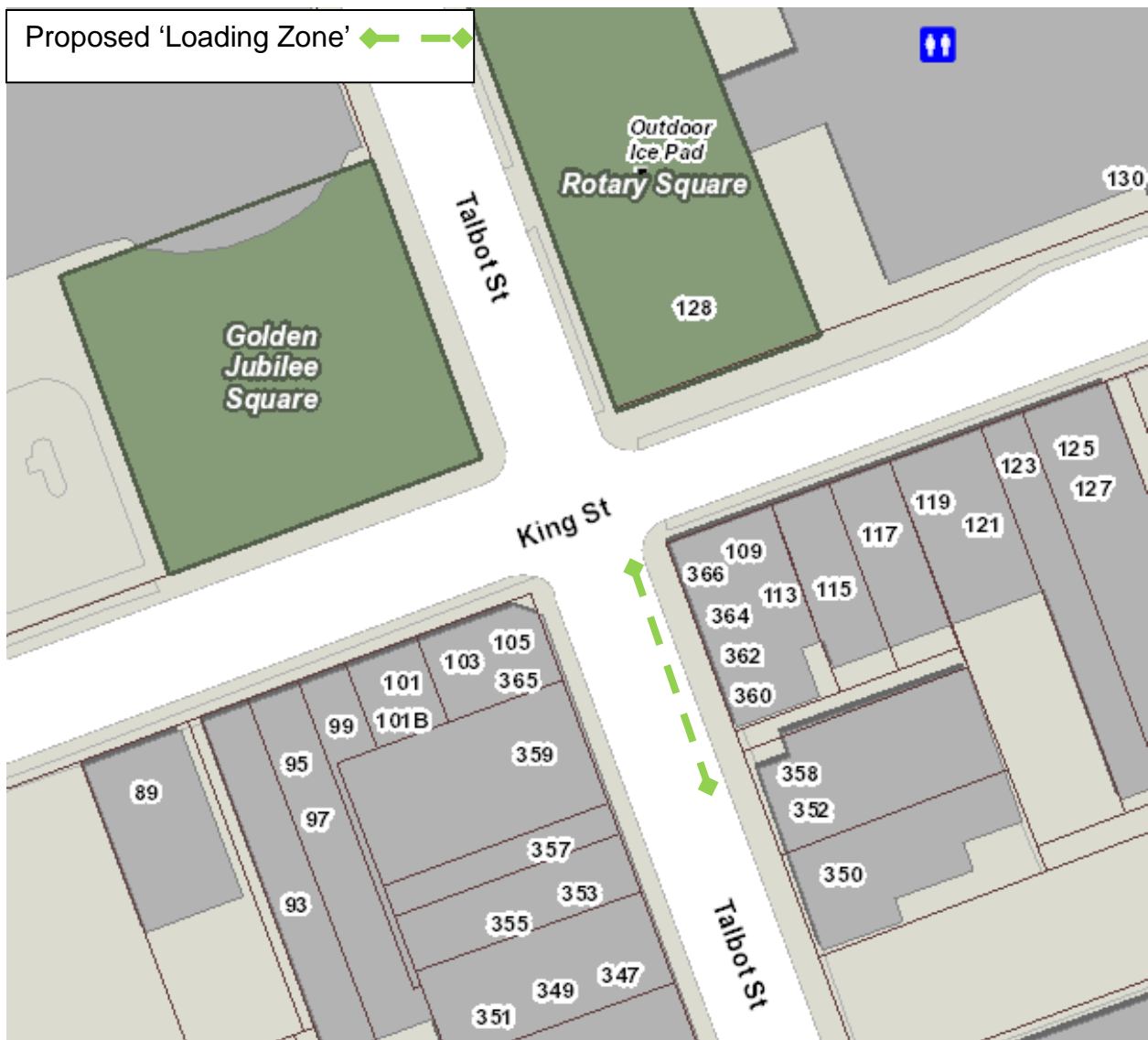


Figure 1: Talbot Street at King Street

An amendment is required to Schedule 5 (Loading Zones) for the above change.

2. Bicycle Lanes

During the resurfacing of Windermere Road from Richmond Street to Adelaide Street N, bicycle lanes were installed which should be added to Schedule 9.1 (Reserved Lanes).

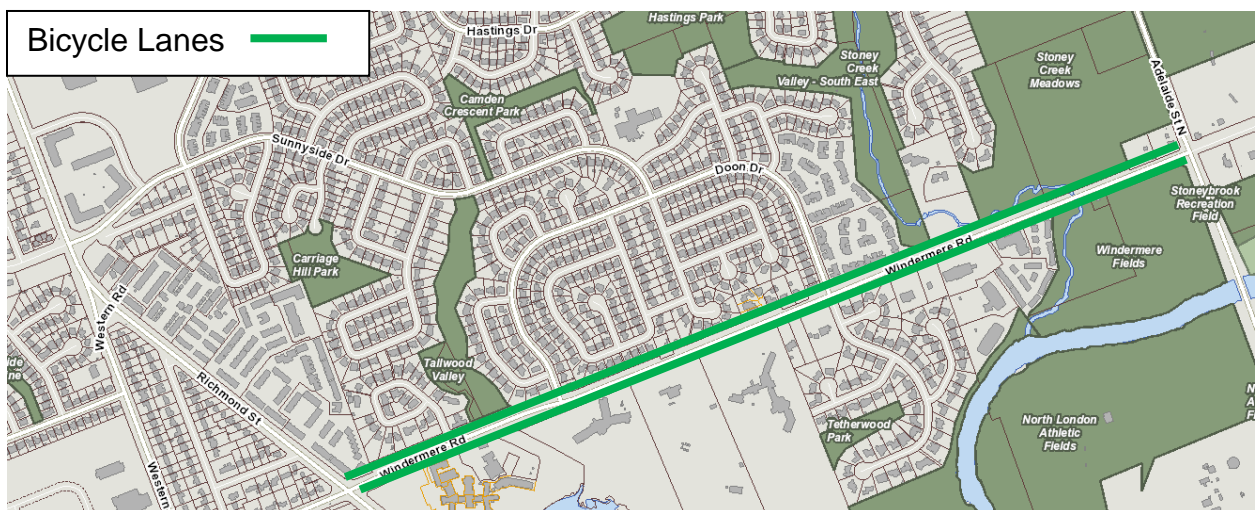


Figure 2: Windermere Road

Amendments are required to Schedule 9.1 (Reserved Lanes) for the above change.

3. Regulatory Signs

To address operational and safety concerns, it is recommended that the following traffic controls be put in place:

Stop Signs

- Dissing Crescent at Prince of Wales Gate (north and south intersections);
- Hayes Street at Yvonne Crescent (west intersection);
- Prince of Wales Gate at South Carriage Road (south intersection);
- Sophia Crescent at Coronation Drive (north and south intersections);
- South Carriage Road at Prince of Wales Gate (north intersection); and,
- Yvonne Crescent at Hayes Street (east intersection).

Yield Signs

- Emma Chase at Finley Crescent (west and east intersections);
- Finley Crescent at Coronation Drive;
- Finley Crescent at South Carriage Road;
- Jessica Way at Sophia Crescent (north and south intersections);
- Noah Bend at Finley Crescent (west and east intersections);
- Noah Bend at Emma Chase;
- Owen Lane at Emma Chase; and,
- Owen Lane at Finley Crescent.

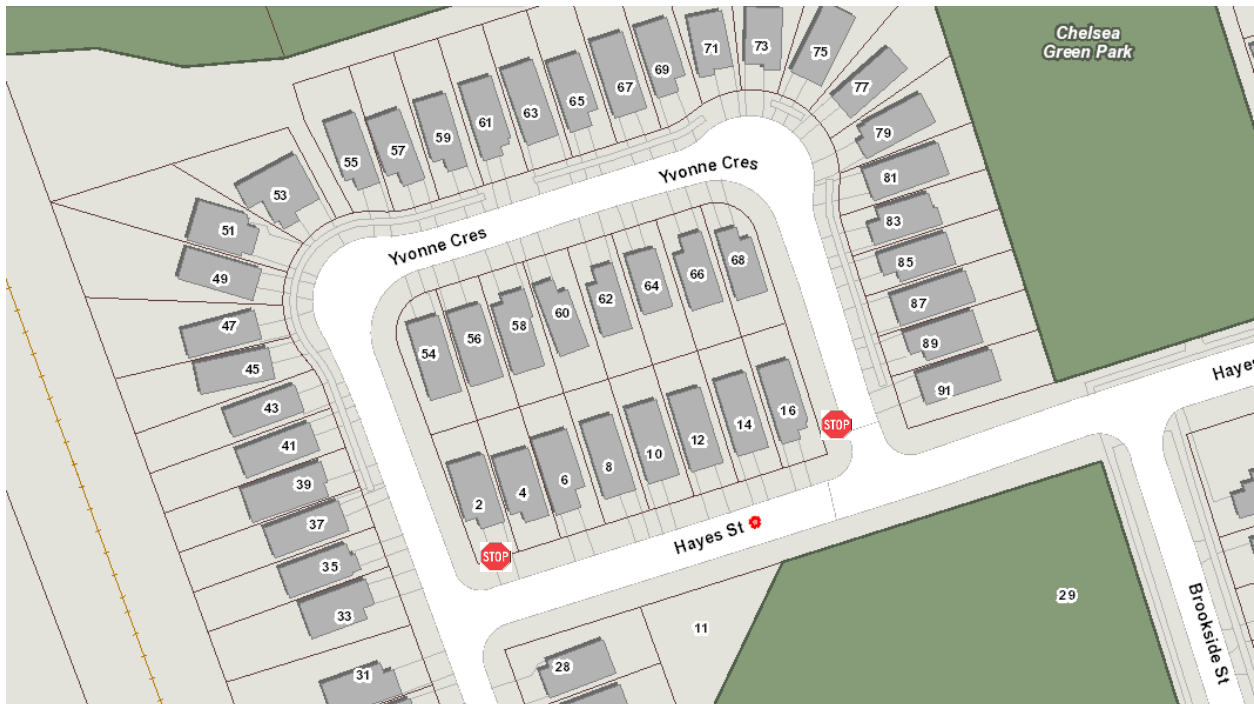


Figure 3: Chelsea Green Meadows Subdivision



Figure 4: Prince of Wales Gate

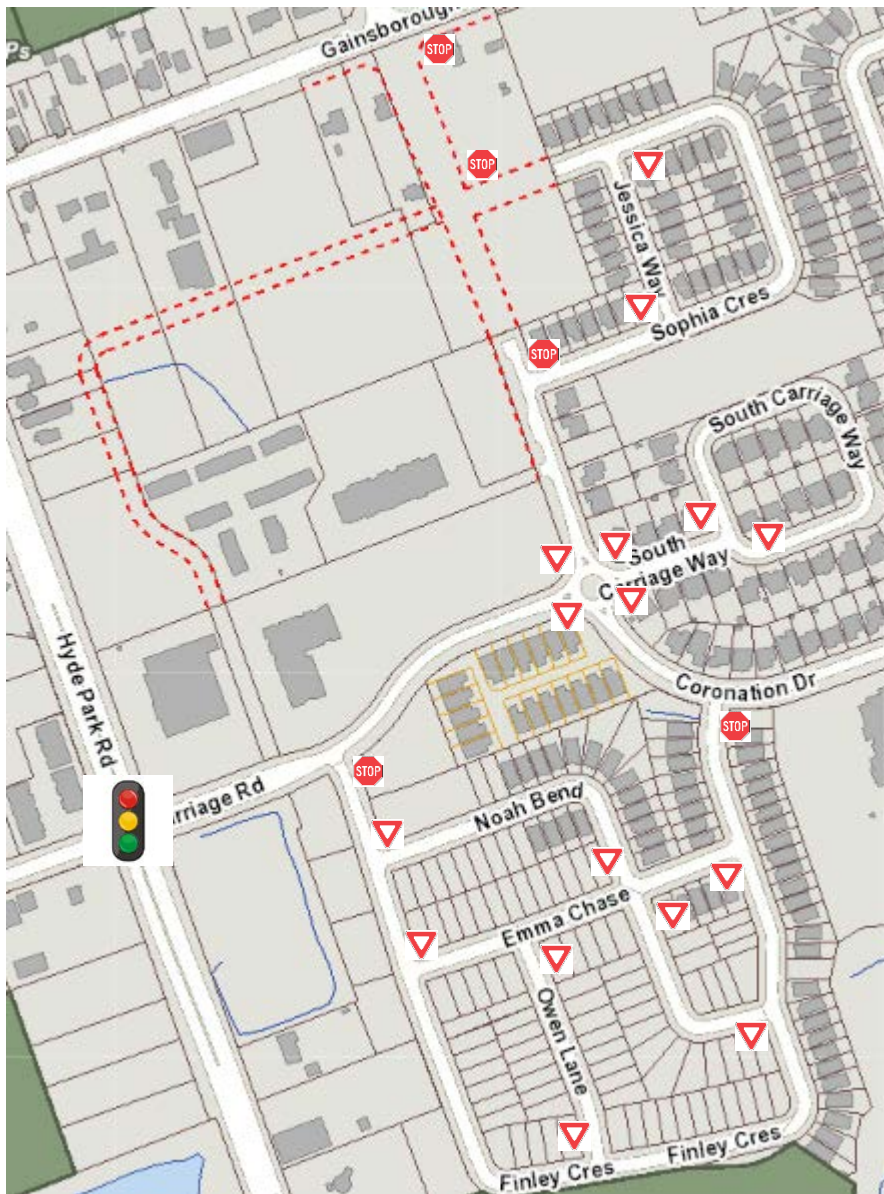


Figure 5: West Coronation Subdivision

Amendments are required to Schedule 10 (Stop Signs) and Schedule 11 (Yield Signs) to address the above changes.

4. Speed Limits

Colonel Talbot Road

Due to a significant increase in development, it is recommended to reduce the posted speed on Colonel Talbot Road from Old Oak Lane to 100 m north of Diane Crescent from 70 km/h to 60 km/h. This will also match the 60 km/h posted speed on Colonel Talbot Road north of Old Oak Lane and 100m north of Diane Crescent.

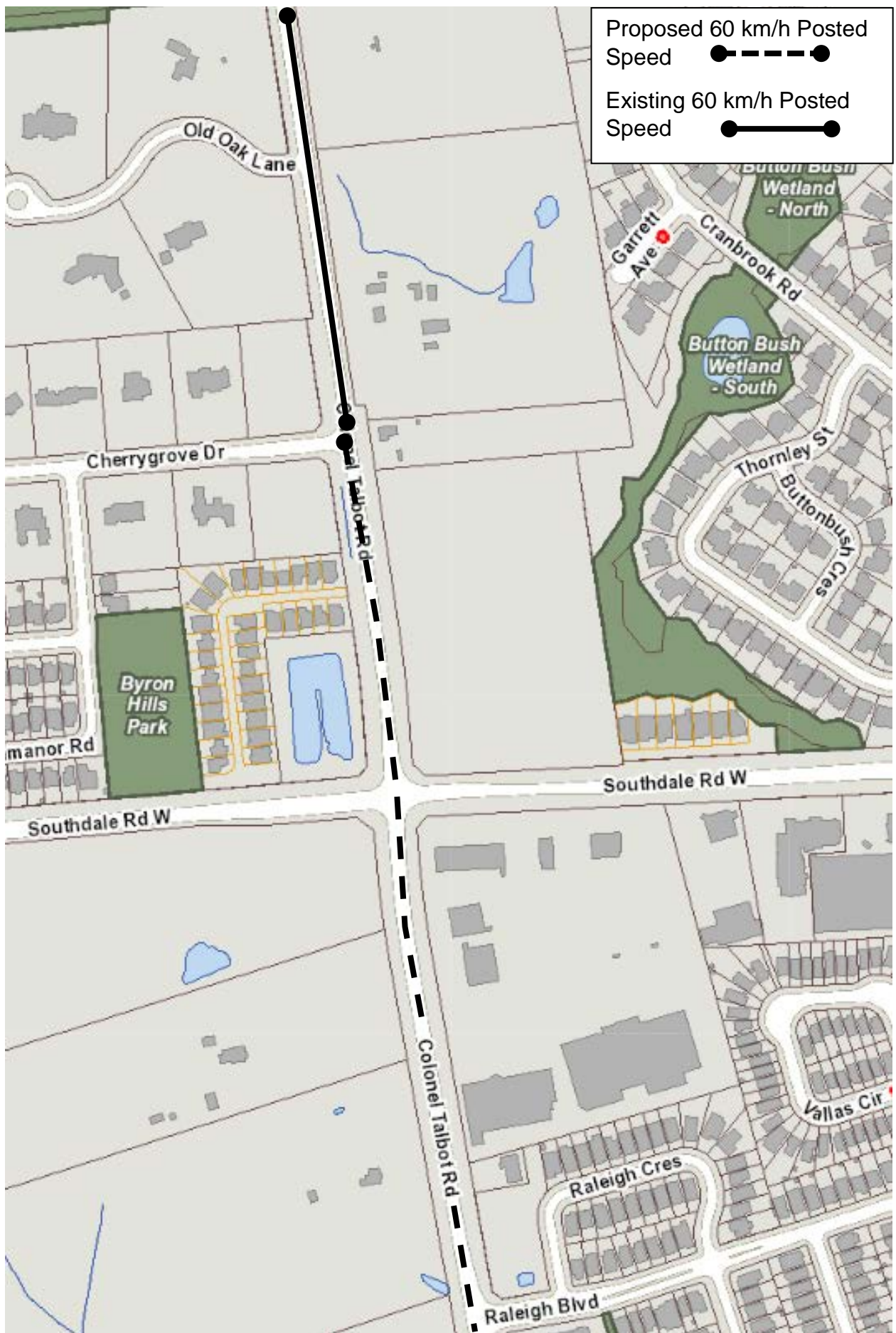


Figure 6: Colonel Talbot Road from Old Oak Lane to Raleigh Boulevard

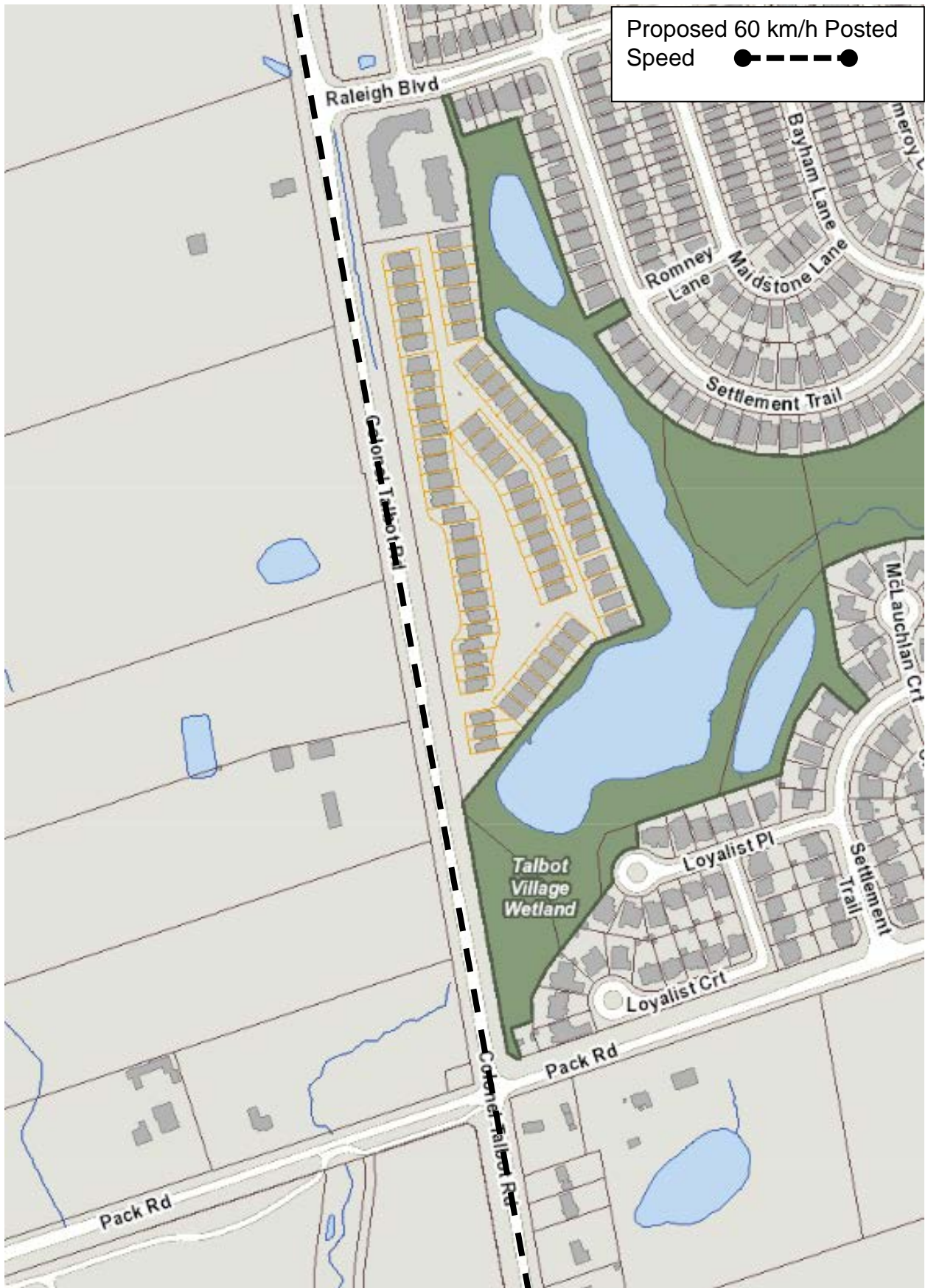


Figure 7: Colonel Talbot Road from Raleigh Boulevard to Pack Road

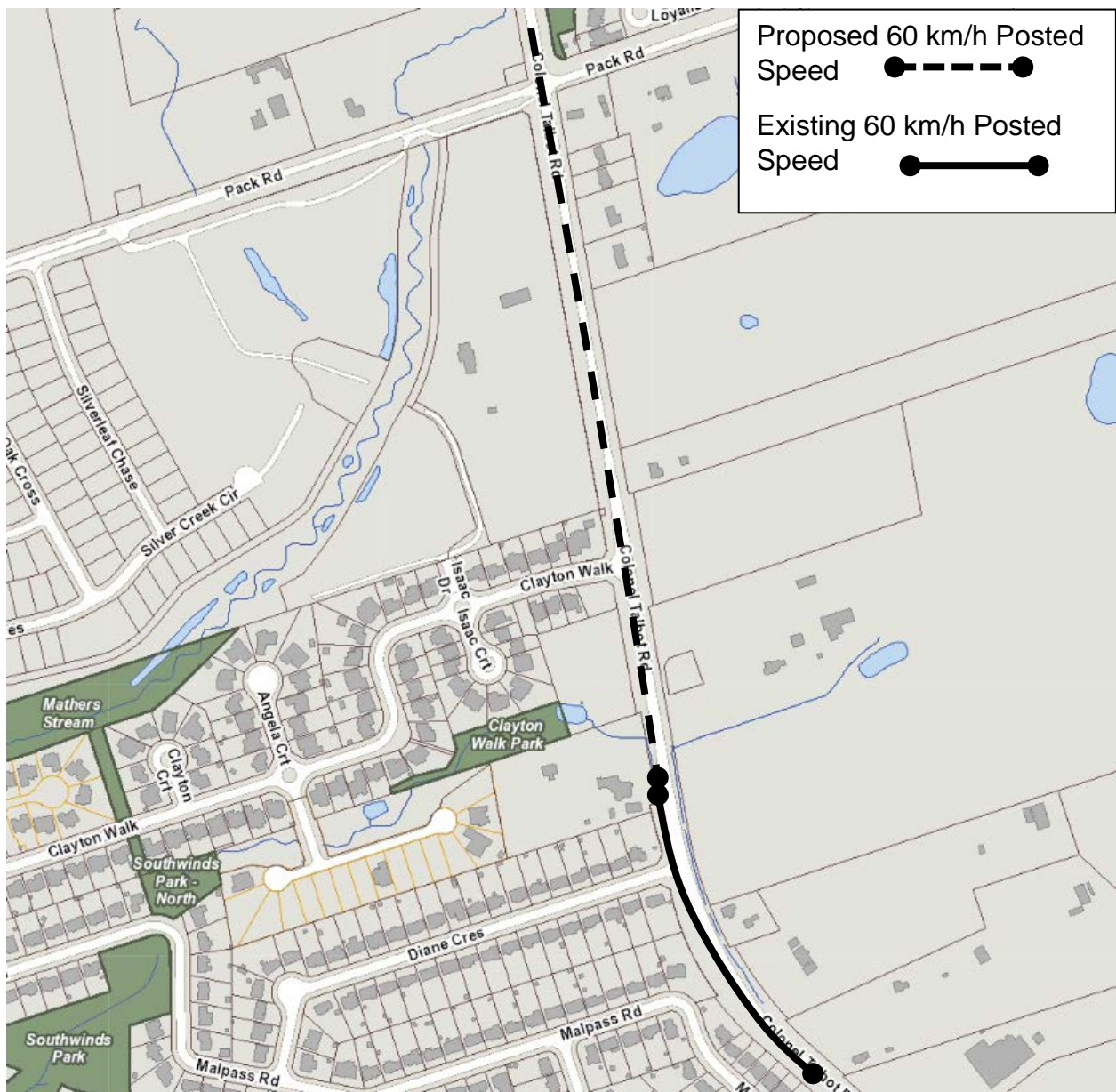


Figure 8: Colonel Talbot Road from Pack Road to Diane Crescent

Hyde Park Road

Due to a significant increase in development, it is recommended to reduce the posted speed on Hyde Park Road from 50 m north of Twilit Boulevard to 150 m north of Fanshawe Park Road W from 70 km/h to 60 km/h. This will also match the 60 km/h posted speed on Hyde Park Road from 150 m north of Fanshawe Park Road W to 260 m north of North Routledge Park.

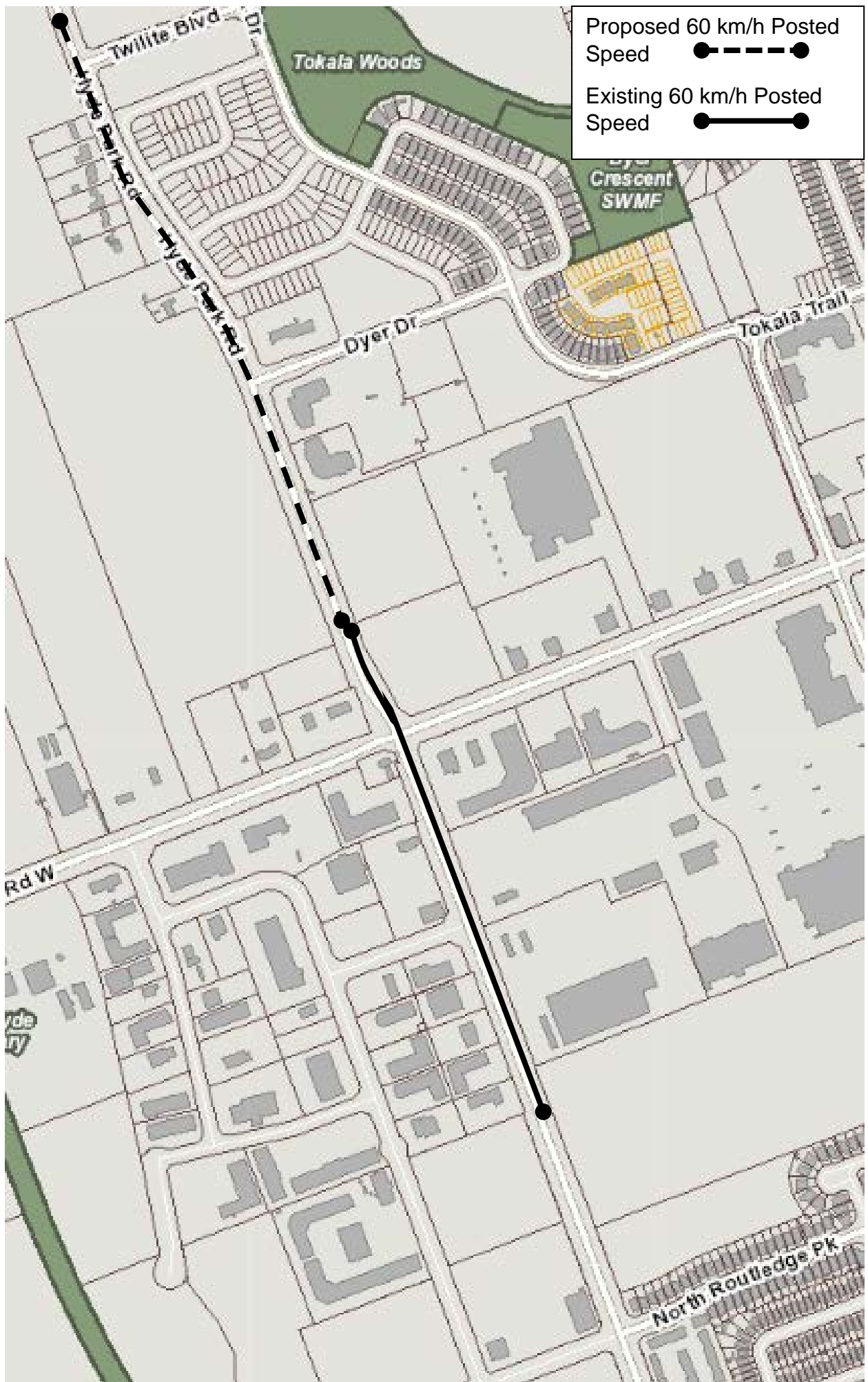


Figure 9: Hyde Park Road

Amendments are required to Schedule 17 (Higher Speed Limits) to address the above changes.

5. Designated Spaces

Queens Avenue

Staff received a request from a local business to convert an existing parking stall on the north side of Queens Avenue west of Wellington Street to a 'designated parking space'.

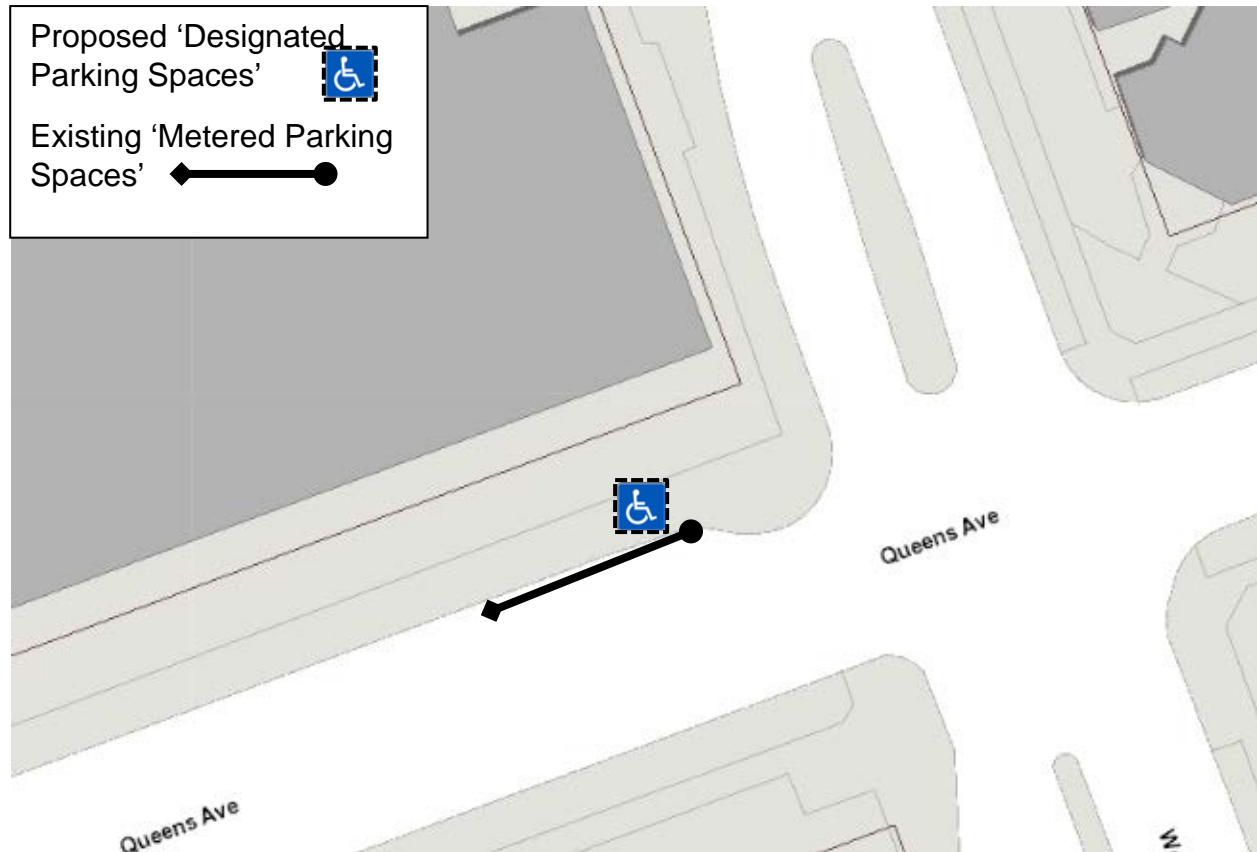


Figure 10: Queens Avenue

An amendment is required to Schedule 27 (Designated Parking Spaces) to address the above change.

PREPARED BY:	REVIEWED AND CONCURRED BY:
SHANE MAGUIRE, P. ENG. DIVISION MANAGER, ROADWAY LIGHTING AND TRAFFIC CONTROL	DOUG MACRAE, P.ENG., MPA DIRECTOR, ROADS AND TRANSPORTATION
RECOMMENDED BY:	
KELLY SCHERR, P.ENG., MBA, FEC MANAGING DIRECTOR, ENVIRONMENTAL AND ENGINEERING SERVICES AND CITY ENGINEER	

\\cfile2\estr\$\Shared\Administration\COMMITTEE REPORTS\Civic Works\2019\DRAFT\09-24\CWC - TRAFFIC PARKING BY-LAW AMENDMENTS CWC September 24 2019 Council October 1 2019 Ver 3.docx

September 13, 2019/db

Attach: Appendix 'A': Proposed Traffic and Parking By-Law Amendments

cc. Parking Office

APPENDIX A

BY-LAW TO AMEND THE TRAFFIC AND PARKING BY-LAW (PS-113)

Bill No.

By-law No. PS-113

A by-law to amend By-law PS-113 entitled, “A by-law to regulate traffic and the parking of motor vehicles in the City of London.”

WHEREAS subsection 10(2) paragraph 7. Of the *Municipal Act, 2001*, S.O. 2001, c.25, as amended, provides that a municipality may pass by-laws to provide any service or thing that the municipality considers necessary or desirable to the public;

AND WHEREAS subsection 5(3) of the *Municipal Act, 2001*, as amended, provides that a municipal power shall be exercised by by-law;

NOW THEREFORE the Municipal Council of The Corporation of the City of London enacts as follows:

1. Loading Zones

Schedule 5 (Loading Zones) of the PS-113 By-law is hereby amended by **adding** the following row:

Talbot Street	East	A point 40 m south of King Street
---------------	------	-----------------------------------

2. Reserved Lane

Schedule 9.1 (Reserved Lanes) of the PS-113 By-law is hereby amended by **adding** the following rows:

Windermere Road	Adelaide Street N to Richmond Street	1 st Lane from north	Anytime	Westbound	Bicycle
Windermere Road	Richmond Street to Adelaide Street N	1 st Lane from south	Anytime	Eastbound	Bicycle

3. Stop Signs

Schedule 10 (Stop Signs) of the PS-113 By-law is hereby amended by **adding** the following rows:

Westbound	Dissing Crescent (north & south intersections)	Prince of Wales Gate
Westbound	Hayes Street (west intersection)	Yvonne Crescent
Northbound & Southbound	Prince of Wales Gate (south intersection)	South Carriage Road
Westbound	Sophia Crescent (north and south intersections)	Coronation Drive
Southbound	Yvonne Crescent (east intersection)	Hayes Street

4. Yield Signs

Schedule 11 (Yield Signs) of the PS-113 By-law is hereby amended by **deleting** the following rows:

Westbound	Dissing Crescent (north & south intersections)	Prince of Wales Gate
Northbound & Southbound	Prince of Wales Gate (south intersection)	South Carriage Road
Eastbound	South Carriage Road (north intersection)	Prince of Wales Gate

Schedule 11 (Yield Signs) of the PS-113 By-law is hereby amended by **adding** the following rows:

Westbound & Eastbound	Emma Chase	Finley Crescent
Northbound	Finley Crescent	Coronation Drive
Northbound	Finley Crescent	South Carriage Road
Northbound & Southbound	Jessica Way	Sophia Crescent
Westbound & Eastbound	Noah Bend	Finley Crescent
Northbound & Southbound	Noah Bend	Emma Chase
Northbound & Southbound	Owen Lane	Finley Crescent

Westbound &
Southbound

South Carriage Road

South Carriage Road

5. Higher Speed Limits

Schedule 17 (Higher Speed Limit) of the PS-113 By-law is hereby amended by **deleting** the following rows:

Colonel Talbot Road	A point 200 m north of Four Winds Road	Old Oak Lane	60 km/h
Colonel Talbot Road	Old Oak Lane	A point 100 m south of Southdale Road W	70 km/h
Colonel Talbot Road	A point 100 m south of Southdale Road W	A point 100 m north of Diane Crescent	70 km/h
Colonel Talbot Road	A point 100 m north of Diane Crescent	A point 20 m north of Lambeth Walk	60 km/h
Hyde Park Road	North City limit	A point 1000 m north of Fanshawe Park Road W	90 km/h
Hyde Park Road	A point 1000 m north of Fanshawe Park Road W	A point 150 m north of said street	70 km/h
Hyde Park Road	A point 150 m north of Fanshawe Park Road W	A point 260 m north of Rutledge Street	60 km/h

Schedule 17 (Higher Speed Limit) of the PS-113 By-law is hereby amended by **adding** the following rows:

Colonel Talbot Road	A point 200 m north of Four Winds Road	A point 20 m north of Lambeth Walk	60 km/h
Hyde Park Road	North City limit	A point 50 m north of Twilite Boulevard	90 km/h
Hyde Park Road	A point 50 m north of Twilite Boulevard	A point 260 m north of North Routledge Park	60 km/h

6. Designated Parking Spaces

Schedule 27 (Designated Parking Spaces) of the PS-113 By-law is hereby amended by **adding** the following row:

Queens Avenue	North	A point 23 m west of Wellington Street to a point 15 m west of Wellington Street	2 Hours
---------------	-------	--	---------

This by-law comes into force and effect on the day it is passed.

PASSED in Open Council on October 1, 2019

Ed Holder, Mayor

Catharine Saunders, City Clerk

First Reading – October 1, 2019
 Second Reading – October 1, 2019
 Third Reading – October 1, 2019