

Bill No. 349
2019

By-law No. S.-____-____

A by-law to lay out, constitute, establish and assume lands in the City of London as public highway. (as widening to Southdale Road East west of Homeview Road) (as widening to Homeview Court and Homeview Road)

WHEREAS it is expedient to establish the lands hereinafter described as public highway;

NOW THEREFORE the Municipal Council of The Corporation of the City of London enacts as follows:

1. The lands and premises hereinafter described are laid out, constituted, established and assumed as public highway as widening to Southdale Road East west of Homeview Road and as widening to Homeview Court and Homeview Road, namely:

“Part of Lot 30 in Concession 1, in the geographic Township of Westminster, now in the City of London and County of Middlesex designated as Part 1 on Reference Plan 33R-20307,”

And

“Part of Lot 30 in Concession 1, in the geographic Township of Westminster, now in the City of London and County of Middlesex designated as Part 2 on Reference Plan 33R-20307.”

2. This by-law comes into force and effect on the day it is passed.

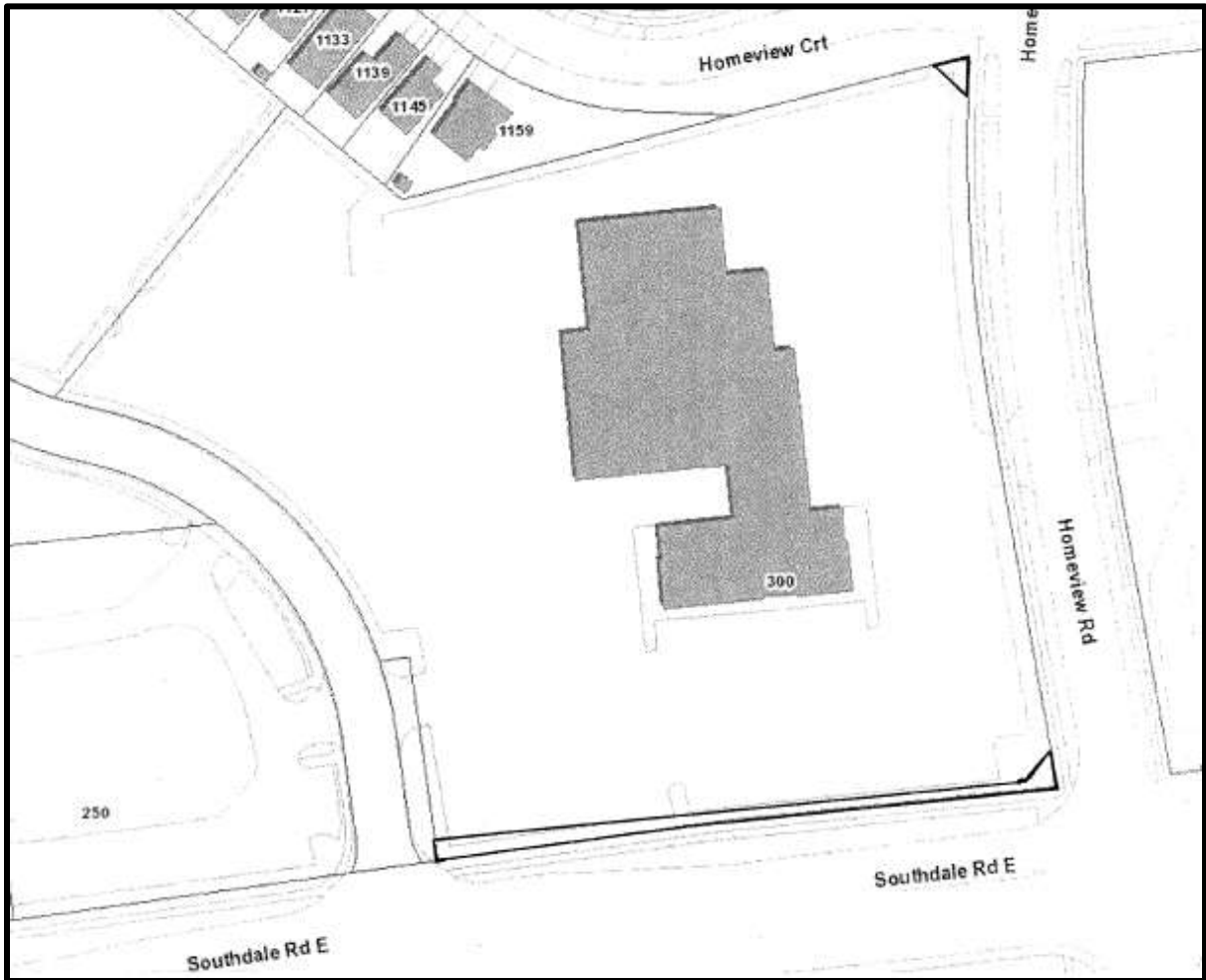
PASSED in Open Council on September 17, 2019.

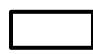
Ed Holder
Mayor

Catharine Saunders
City Clerk

First Reading - September 17, 2019
Second Reading - September 17, 2019
Third Reading - September 17, 2019

Location Map



 Subject Lands